

Status Update on Long-Term Plan Projects

**Special Meeting of the
Technical Oversight Committee
December 20, 2006**

*Tracey Piccone, P.E.
South Florida Water Management District*

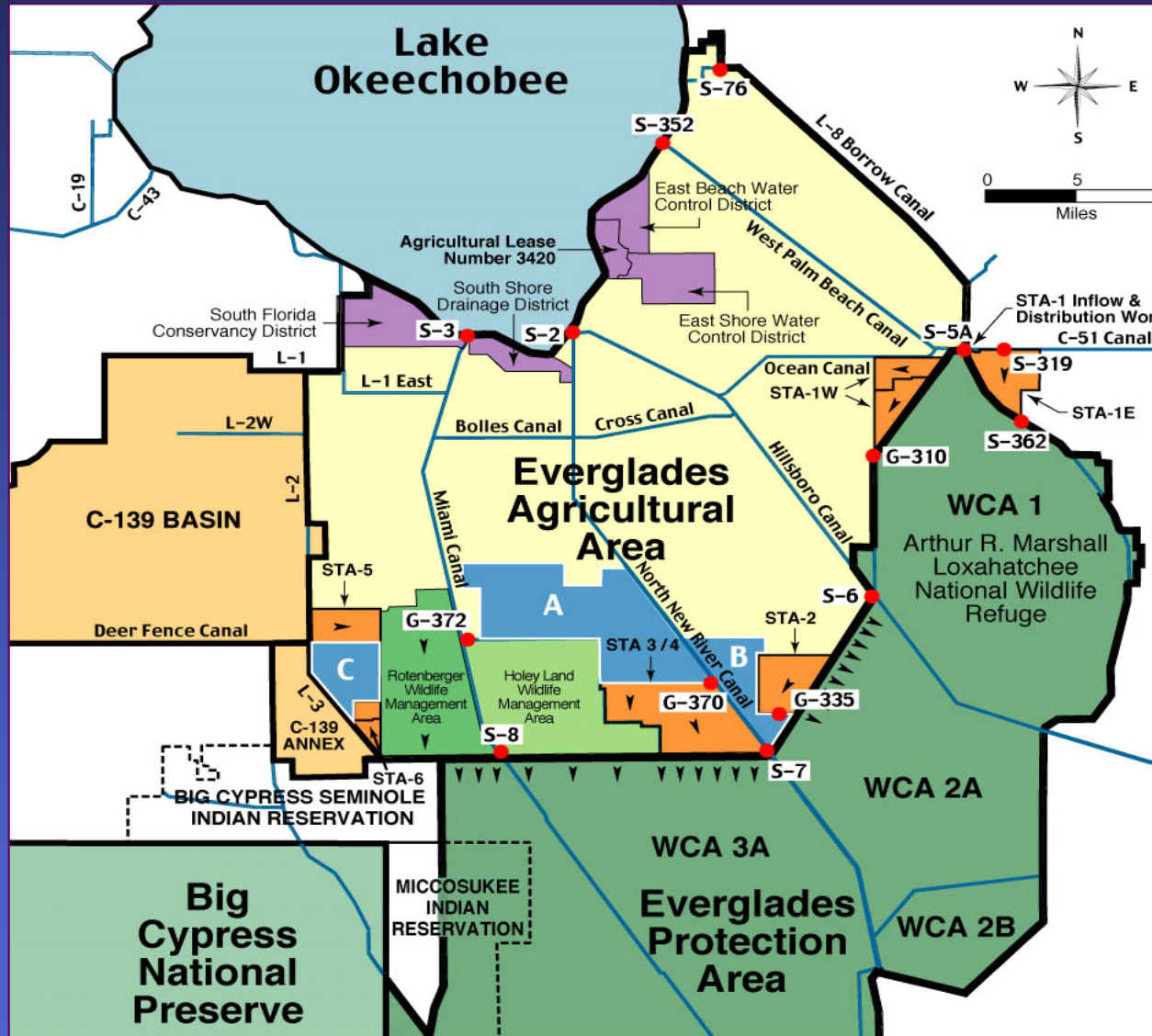
sfwmd.gov

Project Status Update

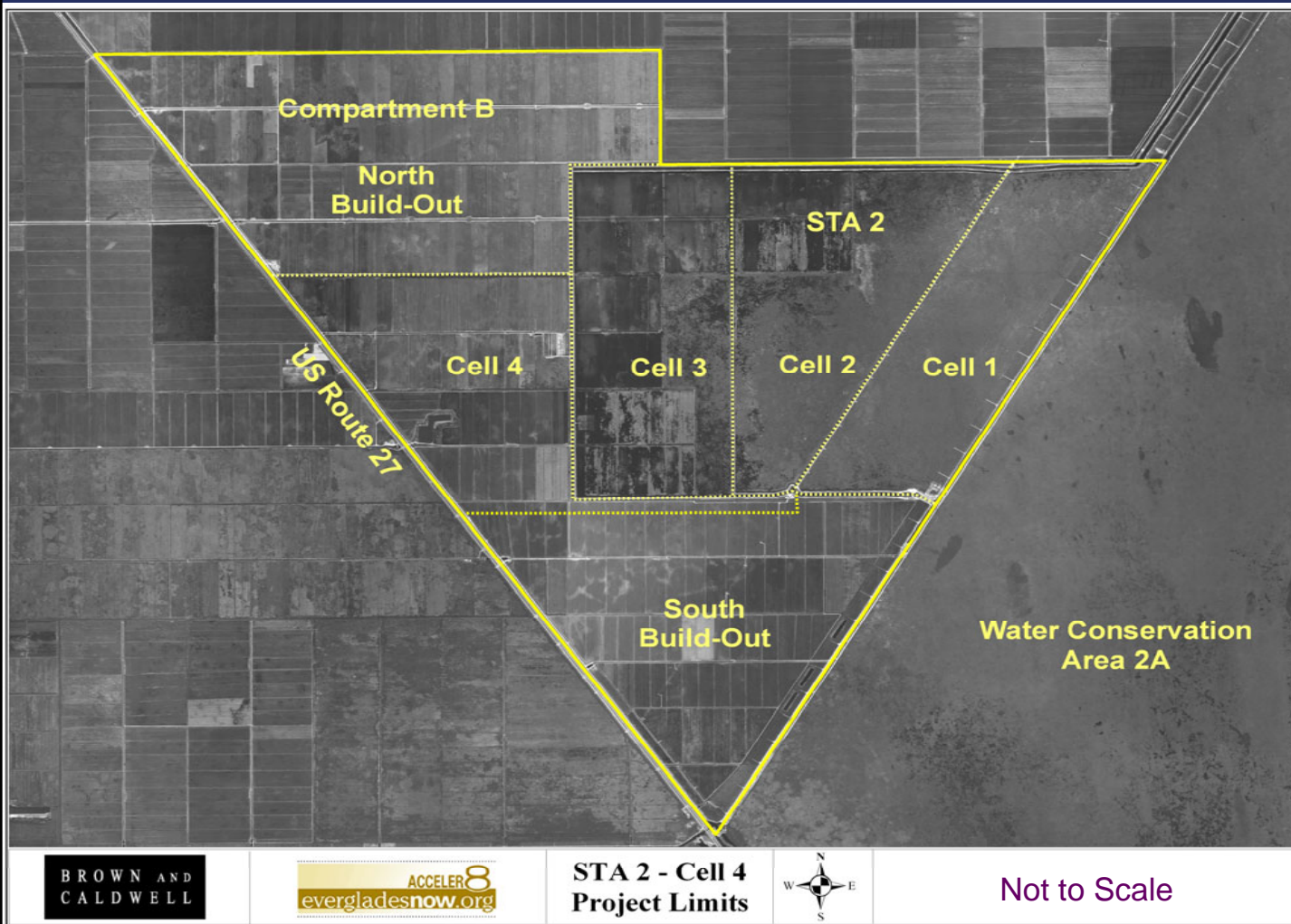
- **Acceler8 Projects**
 - STA-2 Cell 4 Expansion
 - STA-5 Flow-way 3 Expansion
 - STA-6 Section 2 Expansion
 - Acme Basin B Discharge Project
- **STA Enhancements Projects**
 - STA-1E Enhancements
 - STA-1W Enhancements
 - STA-3/4 Enhancements
 - STA-5 Enhancements



Location Map



STA-2 Cell 4 Expansion



- 1,930-acre SAV cell
- Flow-capable status met November 11, 2006



STA-2 Cell 4 Expansion



- Aerial view of Inflow Control Structure G-337A



STA 2

Print #61026144
Date:10/26/06



STA-2 Cell 4 Expansion



- Box culvert installation at G-368 Outflow Structure



STA-2 Cell 4 Expansion



■ Outflow
culvert and
Rip Rap at
G-368



STA 2 Cell 4 Expansion Project

Flow Capable as of November 2006



Western Levee



South Levee & Discharge Canal



Eastern Levee

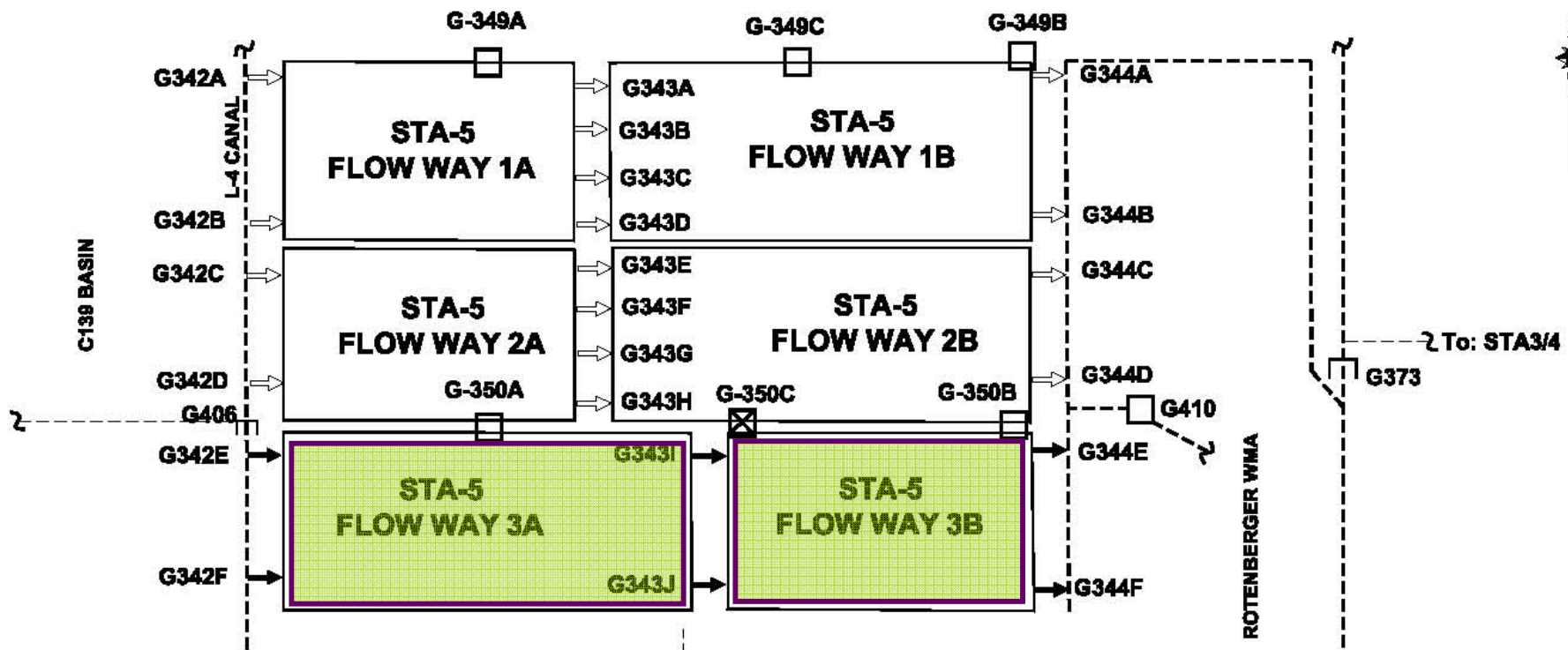


North Levee & Inflow Canal



Inflow Canal

STA-5 Flow-way 3 Expansion



LEGEND

- PUMP STATION (EXISTING)
- PUMP STATION (PROPOSED)
- CONTROL STRUCTURE (EXISTING)
- GATED CONTROL STRUCTURE (PROPOSED)
- DIVERSION STRUCTURE

- 2,560-acre flow-way
- Flow-capable by December 2006



STA-5 Flow-way 3 Expansion



- G-343I
Connection
with Inflow
Canal



STA-5 Flow-way 3 Expansion



- Rip Rap Installation at G-344E

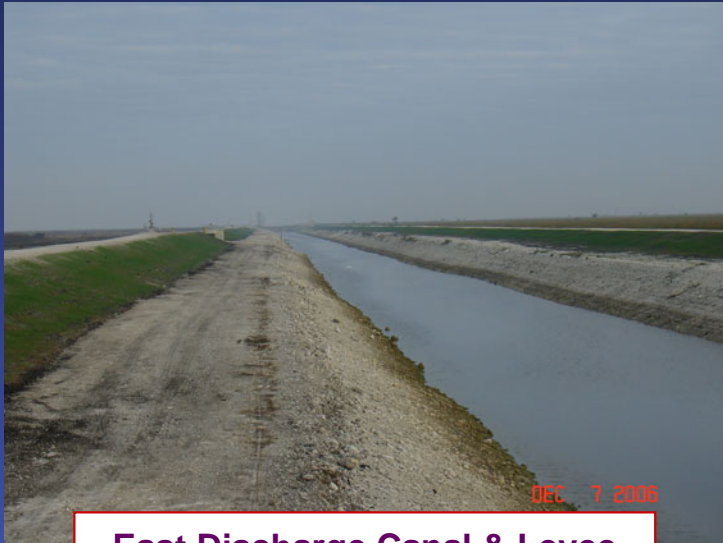
10/13/2006



sfwmd.gov

STA 5 Flow-way 3 Expansion

Flow Capable as of November 2006



East Discharge Canal & Levee



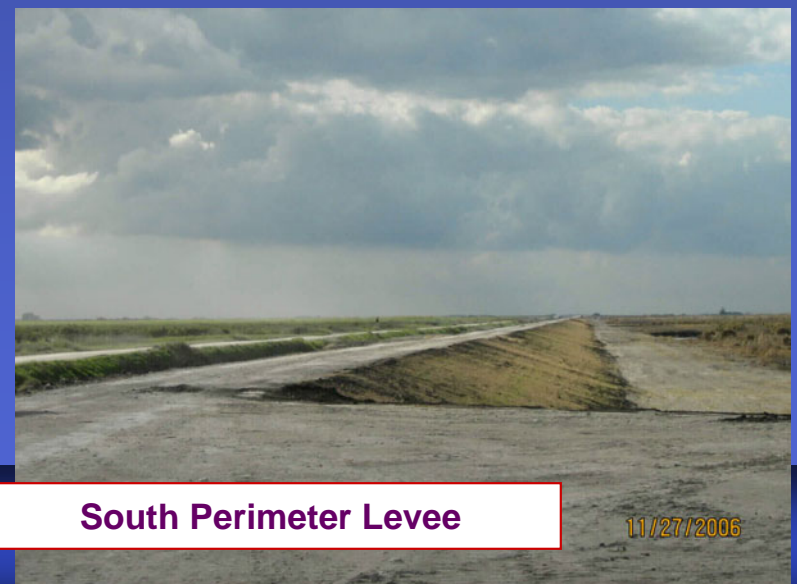
East Interior Levee



G-342E Inflow Control Structure

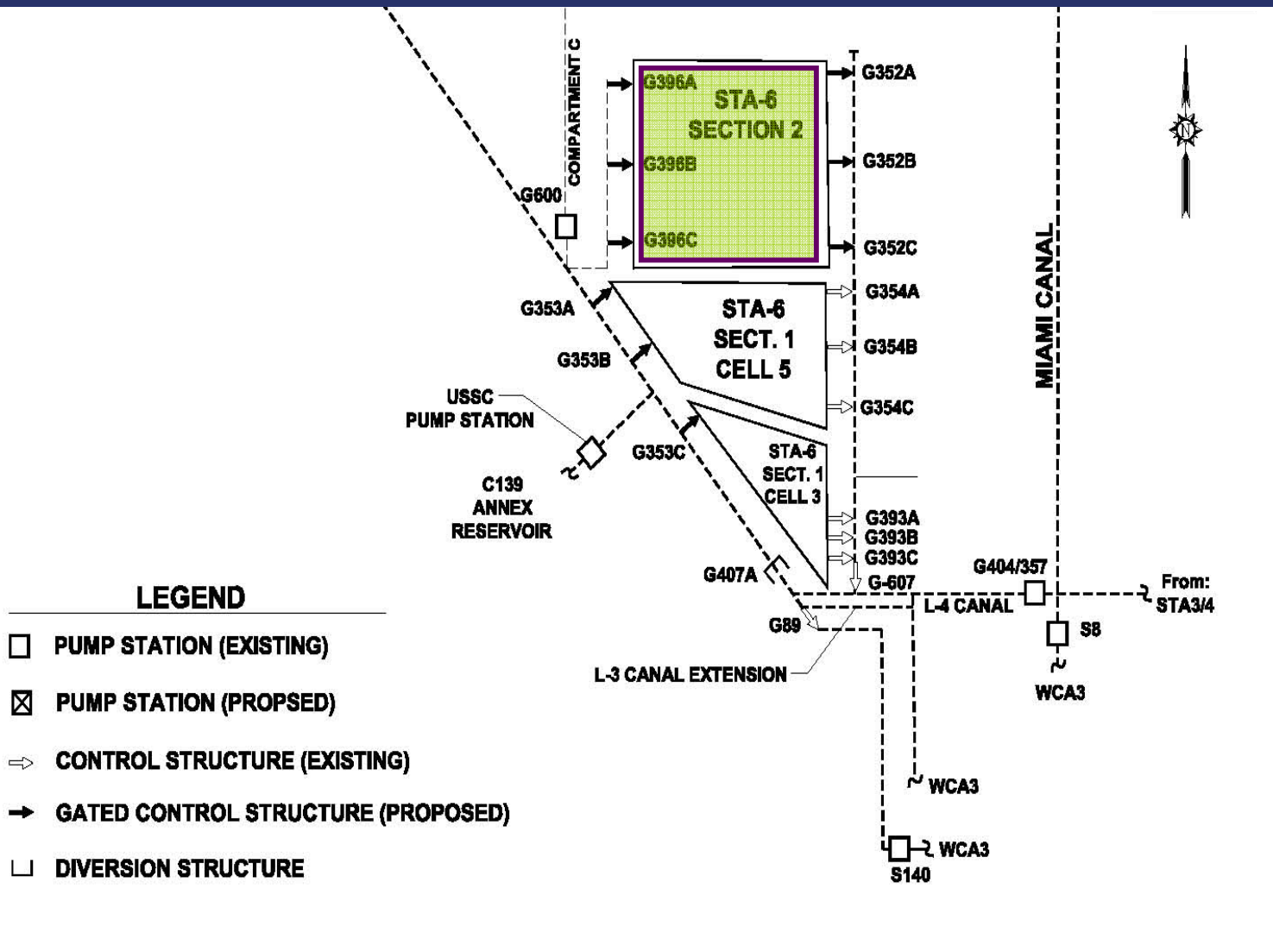


West Levee & Inflow Structure



South Perimeter Levee

STA-6 Section 2 Expansion



- 1,440-acre cell
- Flow-capable by December 2006



STA-6 Section 2 Expansion



- Rip Rap installation at G-396A



STA 6 Section 2 Expansion

Flow Capable in December 2006



G-352B Water Control Structure



Giant Sloth Bones



G-396A Control Structure



Western Inflow Canal



Berm Final Lift

Acme Basin B Discharge Project



- Discharge pump work complete and flow-capable by December 2006



Acme Basin B Discharge Project



- Canal work complete and flow-capable by December 2006



STA-1E Enhancements



- Cells 3,4,5,6,7 on line
- Initial herbicide treatment complete
- Now in vegetation maintenance phase



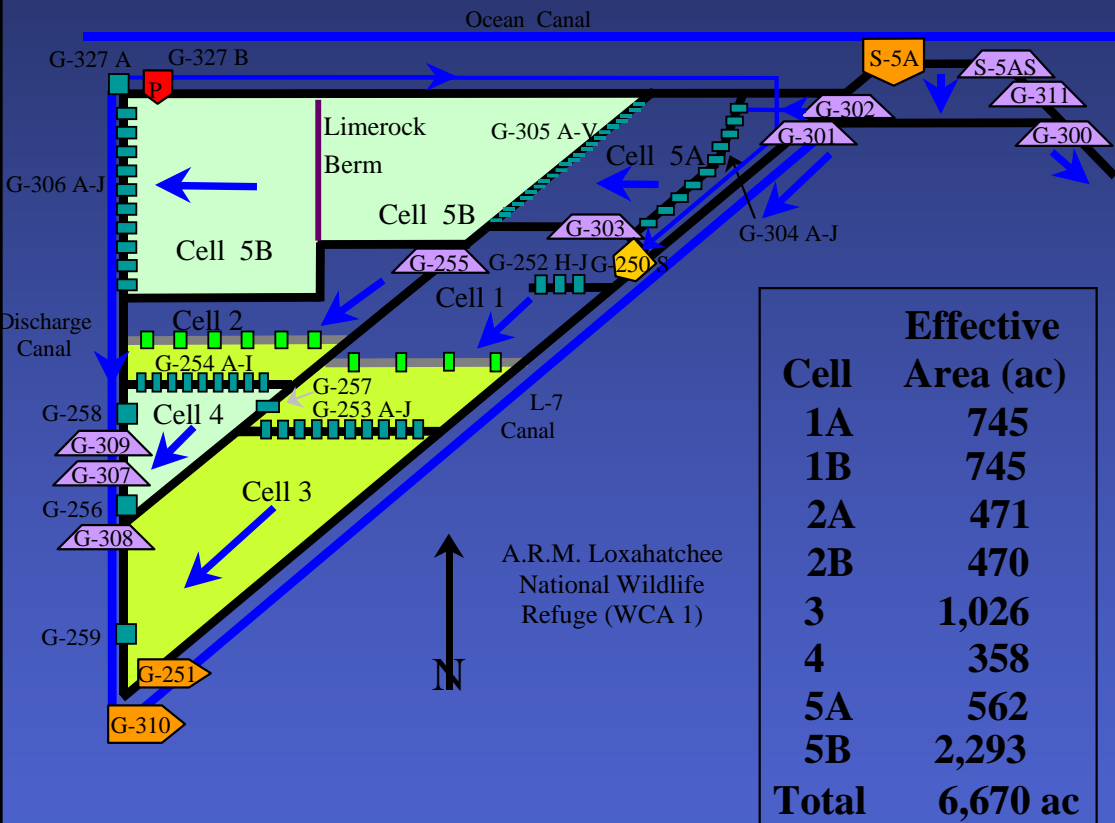
STA-1E Enhancements



- Corps PSTA project in eastern flow-way
- Cells 1 and 2 off line for construction
- Limerock substrate grading
- Current estimated completion date March 2007



STA-1W Enhancements



■ Western and Northern Flow-way projects completed by mid-2006



STA-1W Enhancements



- Eastern Flow-way (Cells 1 and 3) on schedule for July 2007 completion



STA-3/4 Enhancements



- Cell 3 levee and structures complete
- Cell in full flow through operation by June/July 2006
- All three water supply pumps complete



STA-5 Enhancements



- Cell 1B G-349C seepage pump station complete
- G-343 structure modifications complete
- Both flow-ways back on line by September 2006



Summary

- All projects completed on schedule (or earlier)
 - STA-2 Cell 4 Expansion
 - STA-5 Flow-way 3 Expansion
 - STA-6 Section 2 Expansion
 - Acme Basin B Discharge Project
 - STA-1E Enhancements
 - STA-1W Enhancements
 - STA-3/4 Enhancements
 - STA-5 Enhancements



Initial Inundation of STA Expansions

- Substantially Complete and flow-capable
 - STA-2 Cell 4
 - STA-5 Flow-way 3
 - STA-6 Section 2
- Start-up operations including available water supply assessed on monthly basis considering risk factors of seed bank, muck fires, and conveyance limitations

