

Settlement Agreement
Refuge TP Compliance Tracking
April - May 2005
Latest Data Update



Prepared for the
Technical Oversight Committee
July 7, 2005

Prepared by:
Cheol Mo, Violeta Ciuca and Julianne LaRock
Water Quality Assessment Division
South Florida Water Management District
3301 Gun Club Road
West Palm Beach, FL 33406

**Loxahatchee National
Wildlife Refuge**

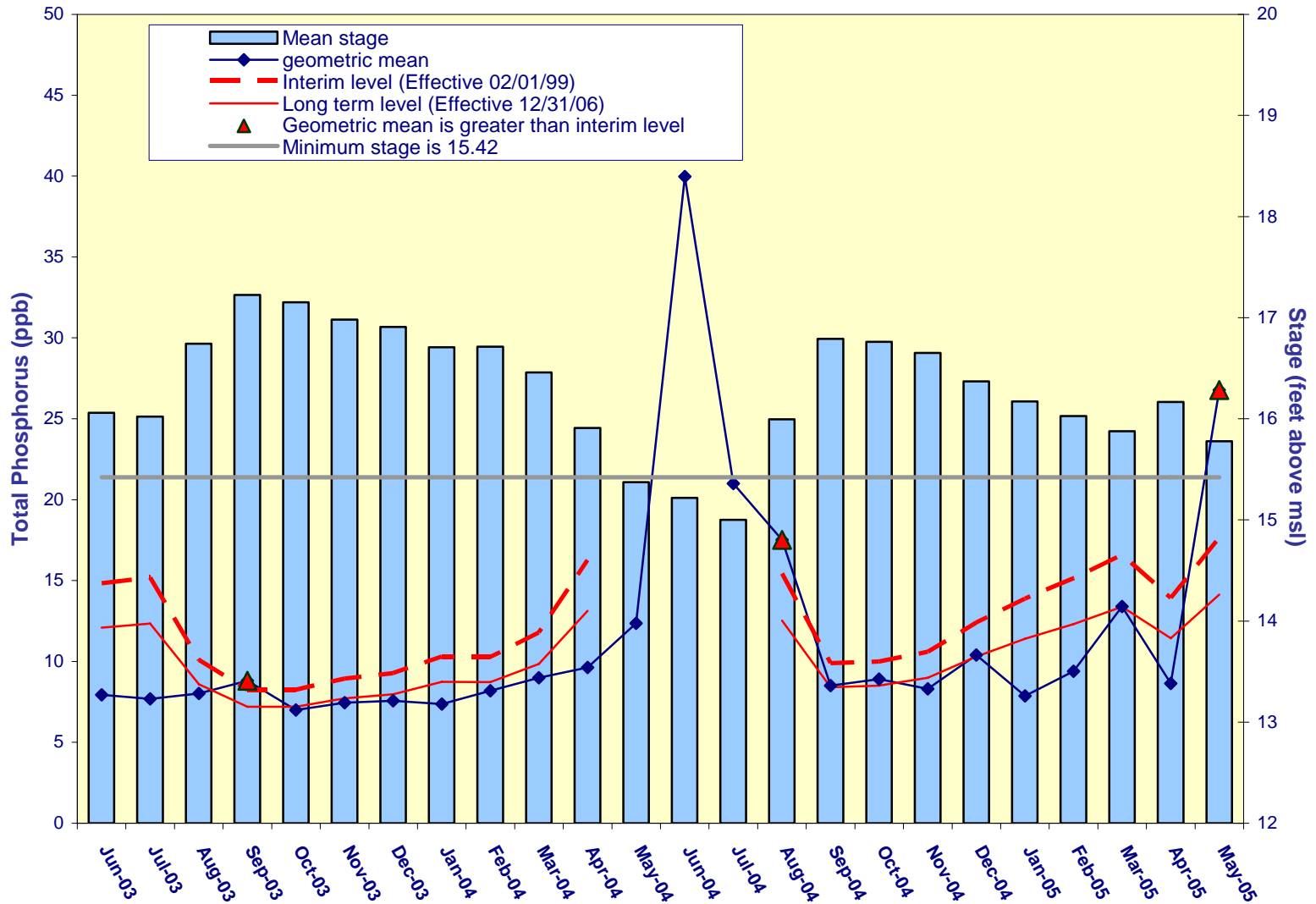
**Total Phosphorus
Compliance Tracking**

(June 2003 – May 2005)

Month - Year	Geometric Mean Concentration (ppb)	Interim Level (ppb) Effective 2/1/99	Long Term Level (ppb) Effective 12/31/06	Average Stage (ft, NGVD)	Number of TP Samples	Number of Stage Measurements
Jun-2003	7.9	14.8	12.1	16.06	11	3
Jul-2003	7.7	15.2	12.3	16.02	9	3
Aug-2003	8.0	10.1	8.6	16.74	14	3
Sep-2003	8.8	8.3	7.2	17.23	13	3
Oct-2003	7.0	8.3	7.2	17.15	14	3
Nov-2003	7.5	8.9	7.7	16.98	11	3
Dec-2003	7.6	9.3	8.0	16.91	14	3
Jan-2004	7.4	10.3	8.7	16.71	14	3
Feb-2004	8.2	10.3	8.7	16.71	14	3
Mar-2004	9.0	11.8	9.8	16.46	14	3
Apr-2004	9.6	16.3	13.1	15.91	9	3
May-2004	12.4	N/A	N/A	15.37	9	3
Jun-2004	40.0	N/A	N/A	15.22	2	3
Jul-2004	21.0	N/A	N/A	15.00	1	3
Aug-2004	17.5	15.4	12.5	16.00	12	3
Sep-2004	8.5	9.9	8.4	16.79	14	3
Oct-2004	8.9	10.0	8.5	16.76	13	3
Nov-2004	8.3	10.6	9.0	16.65	14	3
Dec-2004	10.4	12.4	10.3	16.37	13	3
Jan-2005	7.9	13.9	11.4	16.17	12	3
Feb-2005	9.4	15.1	12.3	16.03	11	3
Mar-2005	13.4	16.6	13.4	15.88	11	3
Apr-2005	8.6	13.9	11.4	16.17	11	3
May-2005	26.8	17.7	14.1	15.78	10	3

A.R.M Loxahatchee National Wildlife Refuge

Monthly Total Phosphorus Geometric Mean Concentrations

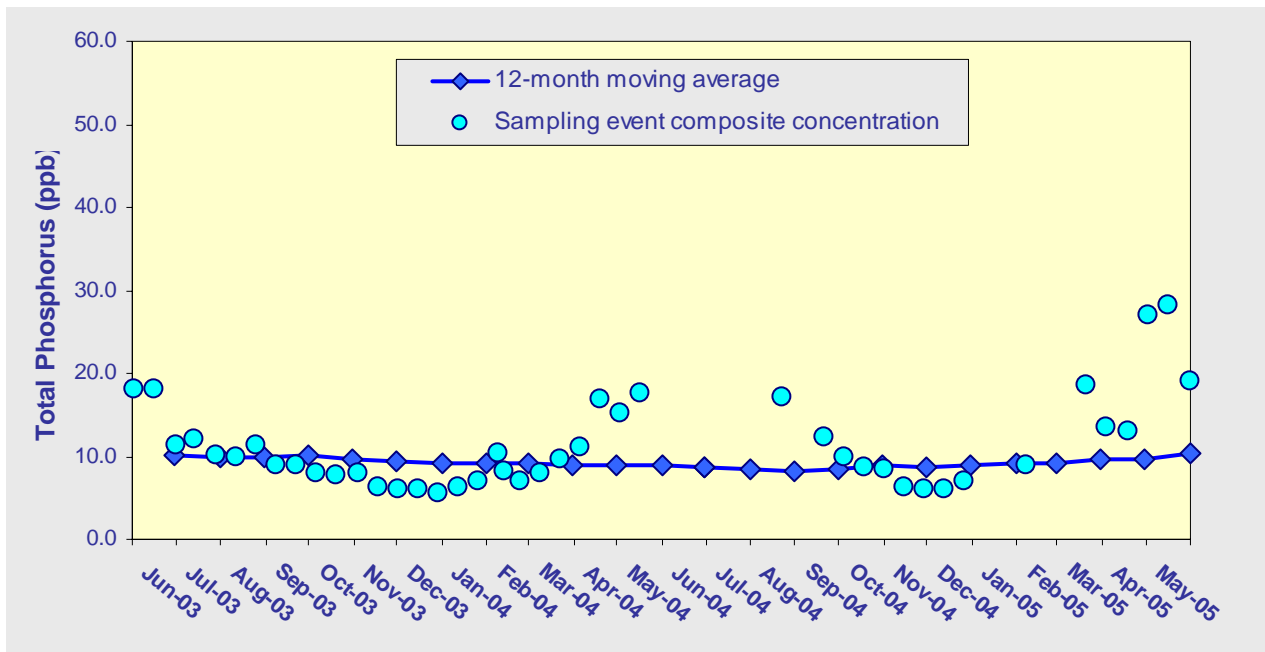


Refuge TP Concentration Data (in mg/L)														
Date Collected	LOX3	LOX4	LOX5	LOX6	LOX7	LOX8	LOX9	LOX10	LOX11	LOX12	LOX13	LOX14	LOX15	LOX16
6/16/2003		0.009	0.019		0.008	0.006								
6/17/2003				0.005					0.007	0.006	0.007	0.009	0.008	0.009
7/14/2003					0.010	0.007								
7/15/2003				0.010					0.007	0.005	0.010	0.008	0.006	0.008
8/11/2003	0.012	0.012	0.009		0.009	0.008	0.007	0.006						
8/12/2003				0.006					0.007	0.006	0.013	0.008	0.005	0.009
9/8/2003	0.014	0.012	0.009		0.010	0.008	0.009	0.011						
9/9/2003				0.006					0.007	0.007		0.010	0.006	0.009
10/6/2003	0.007	0.008	0.007		0.008	0.006	0.006	0.006						
10/7/2003				0.007					0.008	0.007	0.009	0.008	0.005	0.007
11/17/2003		0.008			0.008	0.007		0.008						
11/18/2003				0.007					0.006	0.006	0.011	0.010	0.005	0.008
12/15/2003	0.010	0.014	0.011		0.018	0.013	0.009	0.013						
12/16/2003				0.004					0.005	0.005	0.006	0.005	0.004	0.004
1/12/2004	0.011	0.021	0.011		0.006	0.006	0.007	0.006						
1/13/2004				0.005					0.006	0.005	0.011	0.006	0.004	0.009
2/9/2004	0.027	0.013	0.013		0.008	0.006	0.007	0.011						
2/10/2004				0.008					0.006	0.005	0.009	0.006	0.004	0.007
3/8/2004	0.011	0.007	0.028		0.008	0.007	0.006	0.017						
3/9/2004				0.006					0.011	0.007	0.009	0.007	0.007	0.009
4/19/2004					0.019	0.007								
4/20/2004				0.014					0.019	0.006	0.008	0.006	0.007	0.010
5/17/2004	0.012				0.013	0.016								
5/18/2004									0.014	0.019	0.010	0.012	0.006	0.014
6/14/2004										0.047			0.034	
7/13/2004										0.021				
8/9/2004		0.054			0.016	0.026	0.010	0.013						
8/10/2004				0.017					0.015	0.033	0.013	0.013	0.010	0.020
9/21/2004	0.008	0.012	0.014		0.008	0.006	0.007	0.012						
9/23/2004				0.007					0.009	0.009	0.009	0.008	0.006	0.008
10/18/2004		0.011	0.012		0.008	0.008	0.007	0.010						
10/19/2004				0.007					0.009	0.009	0.010	0.008	0.008	0.010
11/15/2004	0.024	0.010	0.010		0.008	0.007	0.010	0.008						
11/16/2004				0.005					0.008	0.007	0.008	0.006	0.008	0.006
12/13/2004	0.038	0.013			0.014	0.011	0.018	0.013						
12/14/2004				0.005					0.009	0.007	0.010	0.007	0.009	0.005
1/10/2005		0.008			0.009	0.007	0.011	0.009						
1/11/2005				0.006					0.008	0.008	0.010	0.006	0.007	0.007
2/7/2005		0.026		0.006	0.012	0.009		0.014	0.010	0.006	0.009	0.007	0.007	0.008
3/7/2005		0.009		0.011	0.020	0.015		0.018	0.026	0.018	0.009	0.011	0.010	0.010
4/4/2005		0.012			0.010	0.010		0.009						
4/5/2005				0.006					0.009	0.010	0.009	0.008	0.006	0.008
5/2/2005		0.043			0.108	0.046								
5/3/2005				0.049					0.069	0.009	0.015	0.018	0.009	0.012

**Shark River Slough
TP Concentration
Compliance Tracking
(June 2003 – May 2005)**

12-Month Period Ending On	Total Period Flow (Kac-ft)	Flow Weighted Mean Total Phosphorus (ppb)	Interim Limit (ppb)	Long-Term Limit (ppb)	Percent of Sampling Events Greater than 10 ppb (%)	
			Effective 10/1/2003	Effective 12/31/2006	Guideline	Observed
30-Jun-03	901.1	10.2	10.0	8.4	43.8	50.0
31-Jul-03	891.3	9.8	10.0	8.5	44.0	50.0
31-Aug-03	839.3	9.9	10.2	8.7	45.3	50.0
30-Sep-03	850.1	10.0	10.2	8.7	45.1	50.0
31-Oct-03	921.8	9.7	9.9	8.3	43.3	50.0
30-Nov-03	1001.5	9.5	9.6	7.9	41.4	46.2
31-Dec-03	1076.8	9.1	9.4	7.6	40.1	46.2
31-Jan-04	1049.0	9.2	9.4	7.7	40.4	46.2
29-Feb-04	1033.9	9.1	9.5	7.8	40.7	44.4
31-Mar-04	1036.7	8.9	9.4	7.7	40.7	37.0
30-Apr-04	1012.9	9.0	9.5	7.9	41.2	40.7
31-May-04	980.2	9.0	9.7	8.0	41.9	40.7
30-Jun-04	942.5	8.7	9.8	8.2	42.8	36.0
30-Jun-04	942.5	8.7	9.8	8.2	42.8	36.0
31-Jul-04	832.0	8.4	10.2	8.8	45.5	27.3
31-Aug-04	733.0	8.2	10.7	9.3	48.2	28.6
30-Sep-04	704.4	8.4	10.8	9.4	49.0	35.0
31-Oct-04	727.8	8.9	10.7	9.3	48.3	35.0
30-Nov-04	760.3	8.7	10.6	9.1	47.4	33.3
31-Dec-04	738.5	9.0	10.7	9.2	48.0	35.0
31-Jan-05	717.3	9.0	10.7	9.3	48.6	38.9
28-Feb-05	709.8	9.1	10.8	9.4	48.8	37.5
31-Mar-05	703.4	9.6	10.8	9.4	49.0	46.7
30-Apr-05	737.8	9.5	10.7	9.2	48.1	46.7
31-May-05	772.2	10.4	10.5	9.1	47.1	50.0

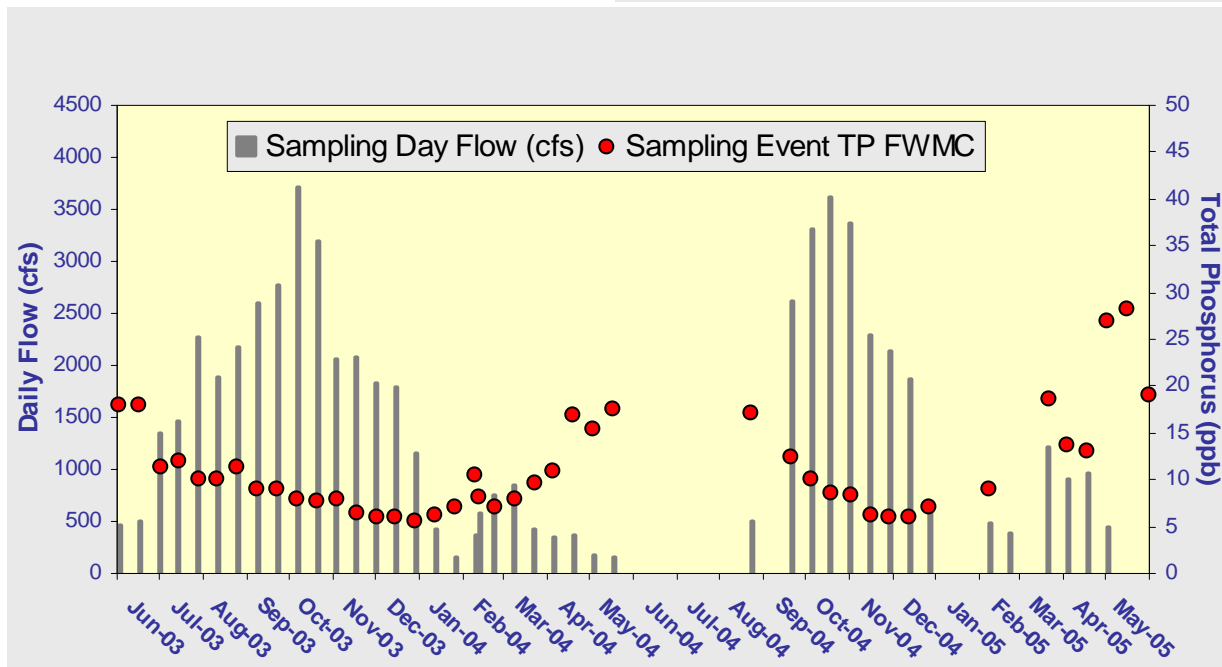
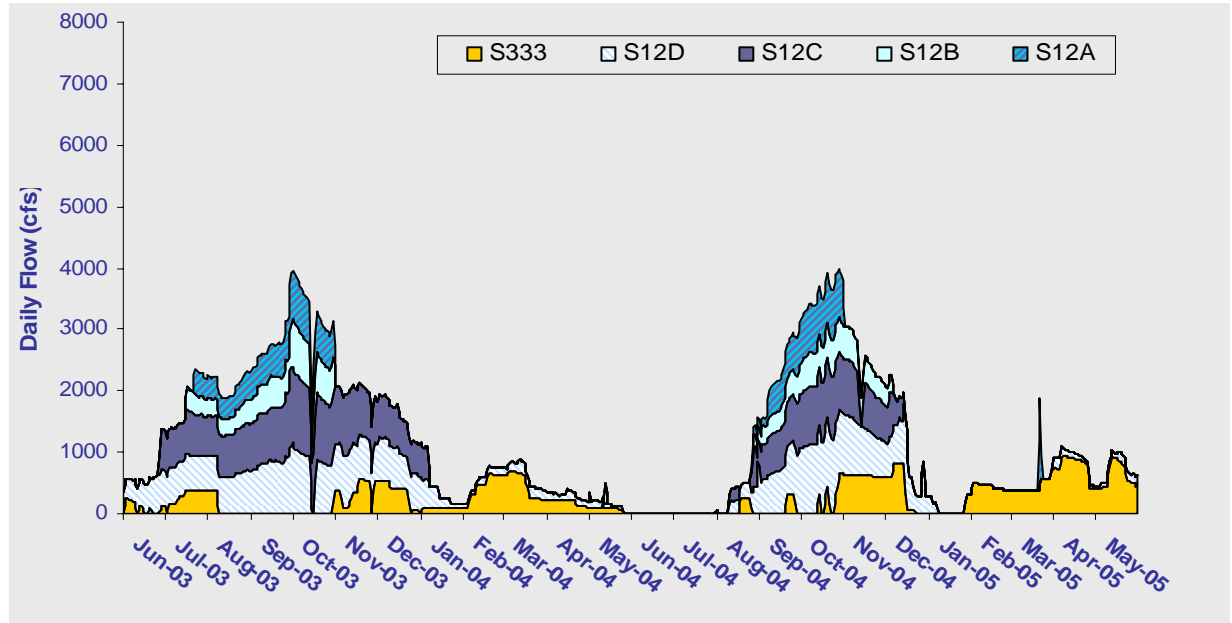
Flow-weighted Mean Concentrations Inflows to Everglades National Park through Shark River Slough



The 12-month moving average FWMC at the end of each month and the composite TP concentration for each sampling event.

Shark River Slough – Daily Flows and Sampling Event FWMC

Daily flows into Shark River Slough by structure

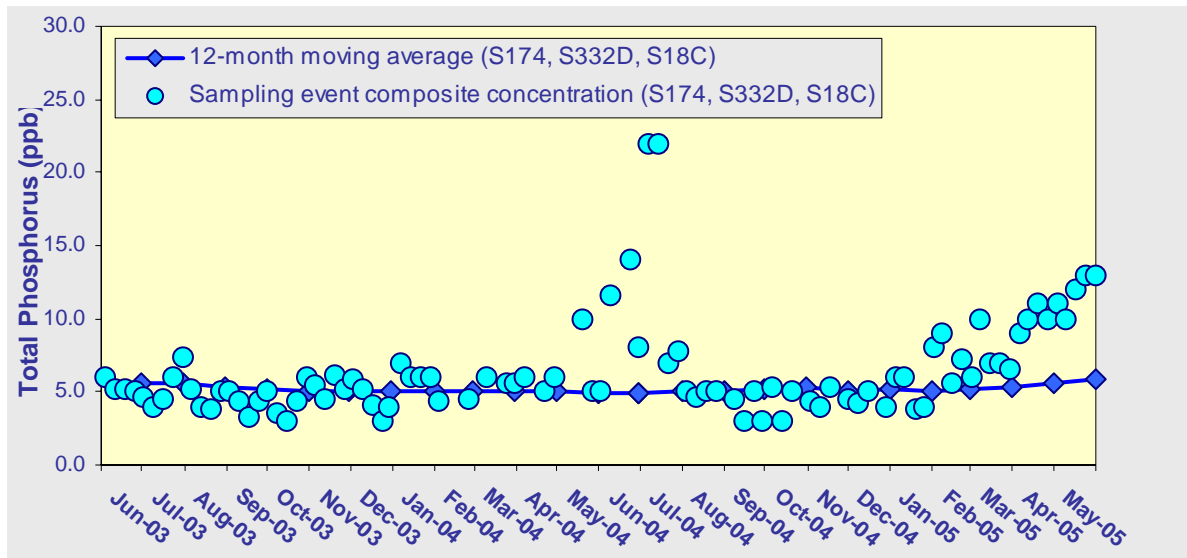


Daily flow at Shark River Slough structures and the corresponding TP FWMCs for individual sampling events.

**Taylor Slough and the
Coastal Basins
TP Concentration
Compliance Tracking
(June 2003 – May 2005)**

12-Month Period Ending On	Total Period Flow (Kac-ft)	Flow Weighted Mean Total Phosphorus (ppb)	Limit (Effective 12/31/06)	Percent of Sampling Events Greater than 10 ppb	
			(ppb)	(%)	
			Long Term	Guideline	Observed
30-Jun-03	249.8	5.6	11.0	53.1	0.0
31-Jul-03	209.0	5.6	11.0	53.1	0.0
31-Aug-03	216.1	5.3	11.0	53.1	0.0
30-Sep-03	221.9	5.2	11.0	53.1	0.0
31-Oct-03	233.8	5.0	11.0	53.1	0.0
30-Nov-03	276.6	5.1	11.0	53.1	0.0
31-Dec-03	293.9	5.0	11.0	53.1	0.0
31-Jan-04	295.9	5.1	11.0	53.1	0.0
29-Feb-04	301.4	5.0	11.0	53.1	0.0
31-Mar-04	297.9	5.0	11.0	53.1	0.0
30-Apr-04	292.3	5.0	11.0	53.1	0.0
31-May-04	274.8	4.9	11.0	53.1	2.2
30-Jun-04	238.0	4.9	11.0	53.1	6.8
30-Jun-04	238.0	4.9	11.0	53.1	6.7
31-Jul-04	224.3	5.0	11.0	53.1	11.4
31-Aug-04	202.7	5.1	11.0	53.1	11.4
30-Sep-04	192.6	5.2	11.0	53.1	11.4
31-Oct-04	210.1	5.3	11.0	53.1	11.9
30-Nov-04	206.7	5.1	11.0	53.1	11.9
31-Dec-04	193.0	5.2	11.0	53.1	12.5
31-Jan-05	194.4	5.1	11.0	53.1	12.5
28-Feb-05	194.7	5.2	11.0	53.1	11.9
31-Mar-05	199.6	5.3	11.0	53.1	11.4
30-Apr-05	207.2	5.6	11.0	53.1	13.3
31-May-05	214.1	5.9	11.0	53.1	18.8

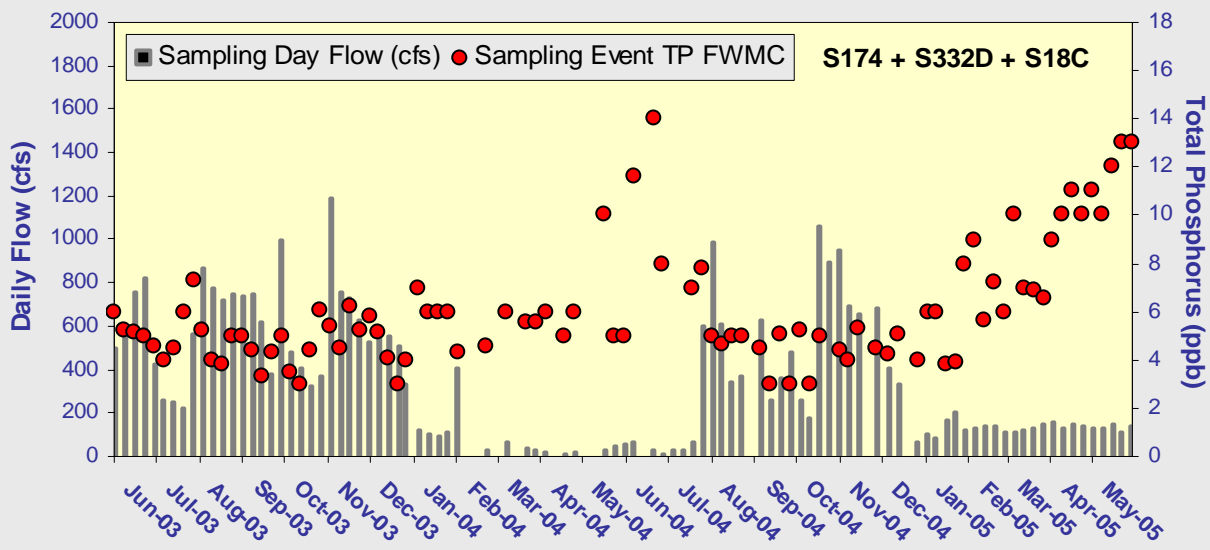
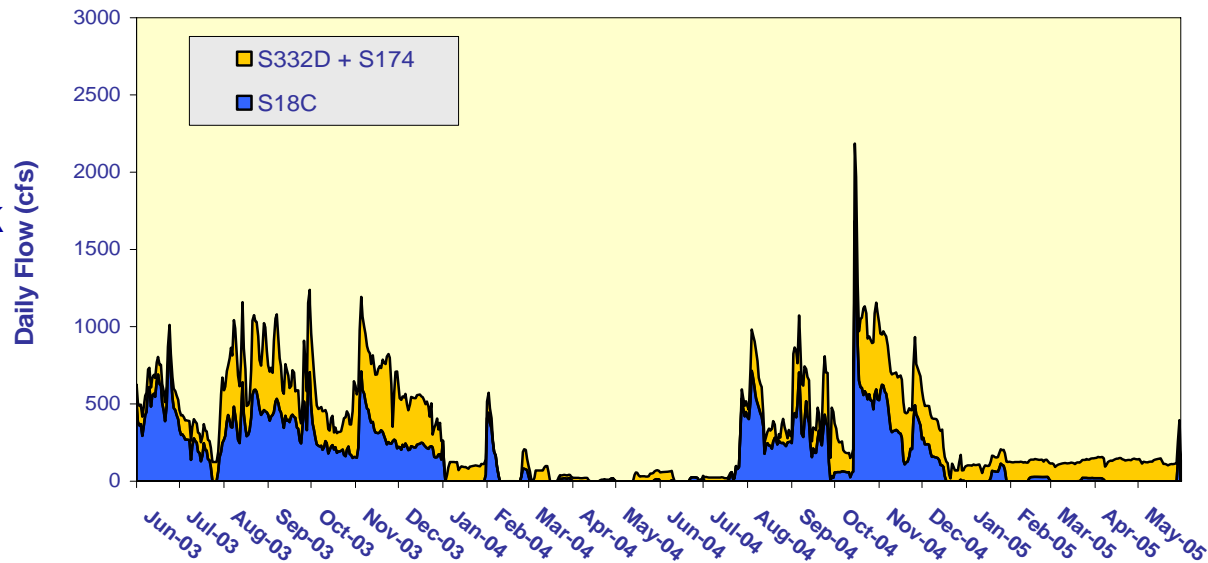
TP flow-weighted mean concentrations in inflows to the ENP through Taylor Slough and the Coastal Basins



The 12-month moving average FWMC at the end of each month and the composite TP concentration for each sampling event.

Taylor Slough and S18C – Daily Flows and Sampling Event FWMC

Daily flows into Everglades National Park through Taylor Slough and S18C.



Daily flows at Taylor Slough structures and S18C and the corresponding TP for individual sampling events.