



SETTLEMENT AGREEMENT REPORT

October – December 2012
(UPDATE)

Stuart Van Horn, P.E.

Section Leader

Compliance Assessment & Reporting Section
Water Quality Bureau

Technical Oversight Committee

Original: February 19, 2013

Update: May 14, 2013

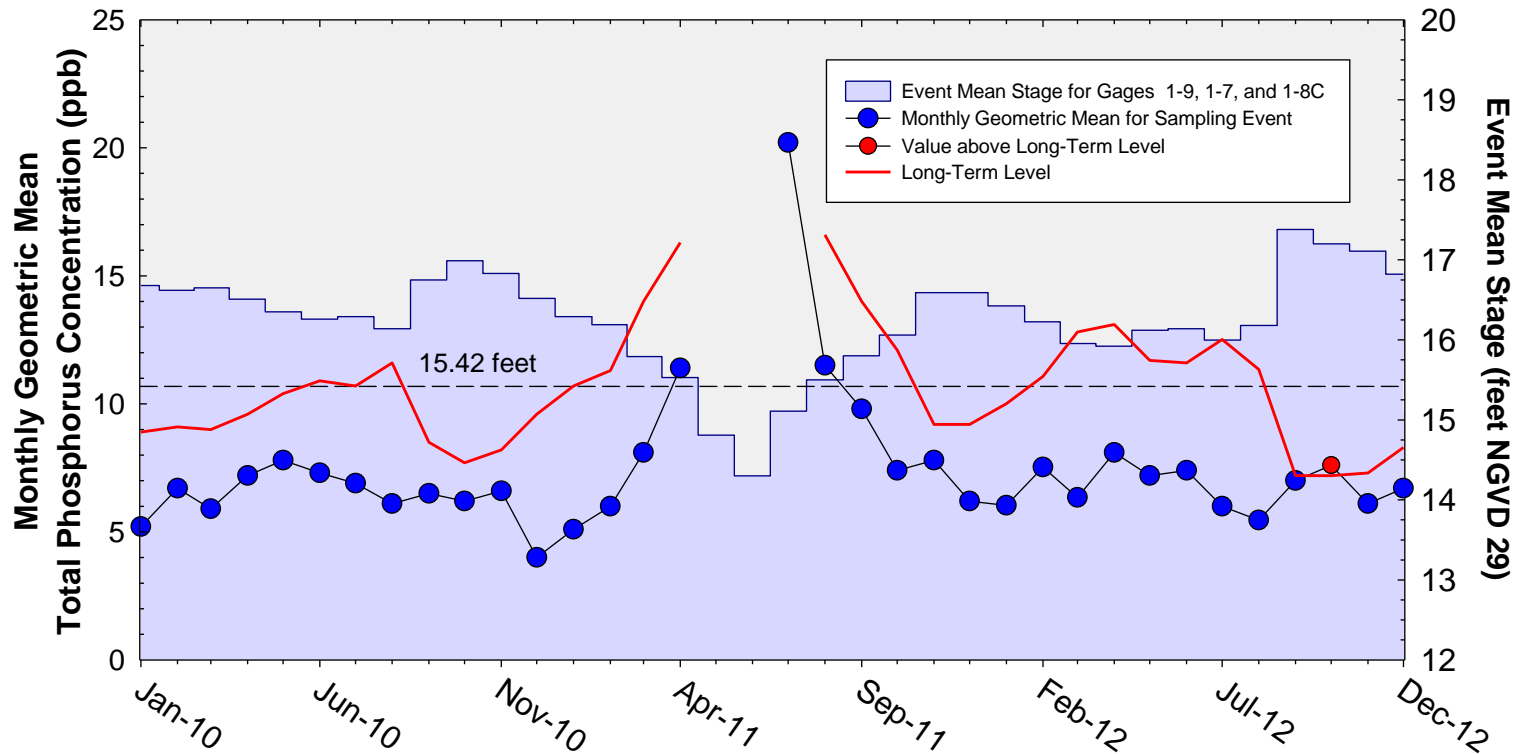


SUMMARY

Month	Geometric Mean TP Concentration (ppb)	Long-term Level (ppb)	Mean Stage (feet NGVD 29)	Number of Samples	
Arthur R. Marshall Loxahatchee National Wildlife Refuge					
Oct 2012	7.6	7.2	17.20	14	
Nov 2012	6.1	7.3	17.11	14	
Dec 2012	6.7	8.3	16.82	14	
12-Month Period Ending	Total Flow (kac-ft)	12-Month Flow-weighted Mean TP Concentration (ppb)	Long-term Limit (ppb)	Percent of Sampling Events Greater than 10 ppb	
				Guideline	Observed
Everglades National Park – Shark River Slough					
Oct 2012	909.8	8.3	8.4	43.6	28.0
Nov 2012	882.4	7.9	8.5	44.3	28.0
Dec 2012	873.1	7.8	8.5	44.5	28.0
Everglades National Park – Taylor Slough and Coastal Basins					
Oct 2012	283.6	5.3	11.0	53.1	0.0
Nov 2012	273.0	5.1	11.0	53.1	0.0
Dec 2012	279.6	5.1	11.0	53.1	0.0

A.R.M Loxahatchee National Wildlife Refuge

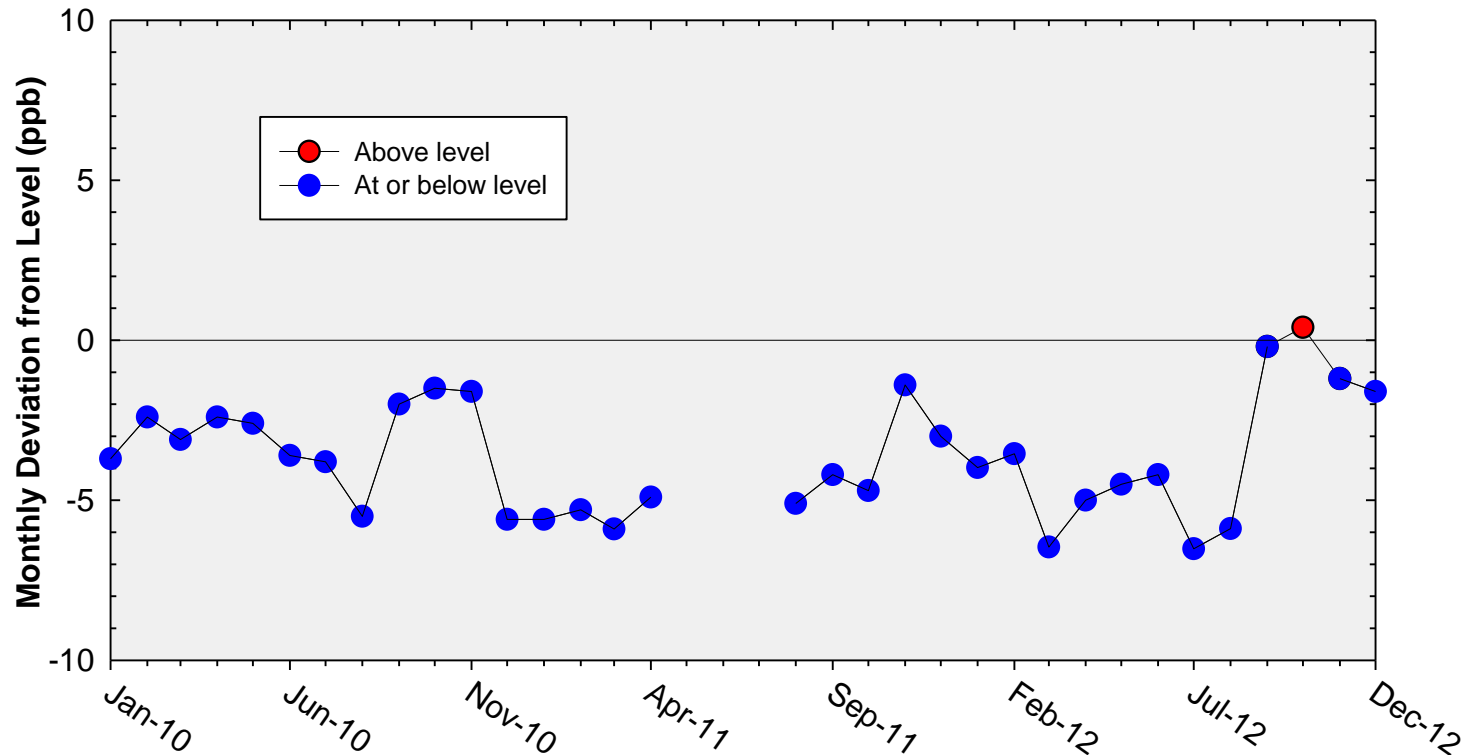
Monthly Total Phosphorus Geometric Mean Concentrations



Note: Long-term level was not applicable for May 2011, June 2011, and July 2011 (sampling day average stages < 15.42 ft).

A.R.M Loxahatchee National Wildlife Refuge

Deviation of monthly geometric mean total phosphorus concentrations with calculated long-term levels



Note: Long-term level was not applicable for May 2011, June 2011, and July 2011 (sampling day average stages < 15.42 ft).

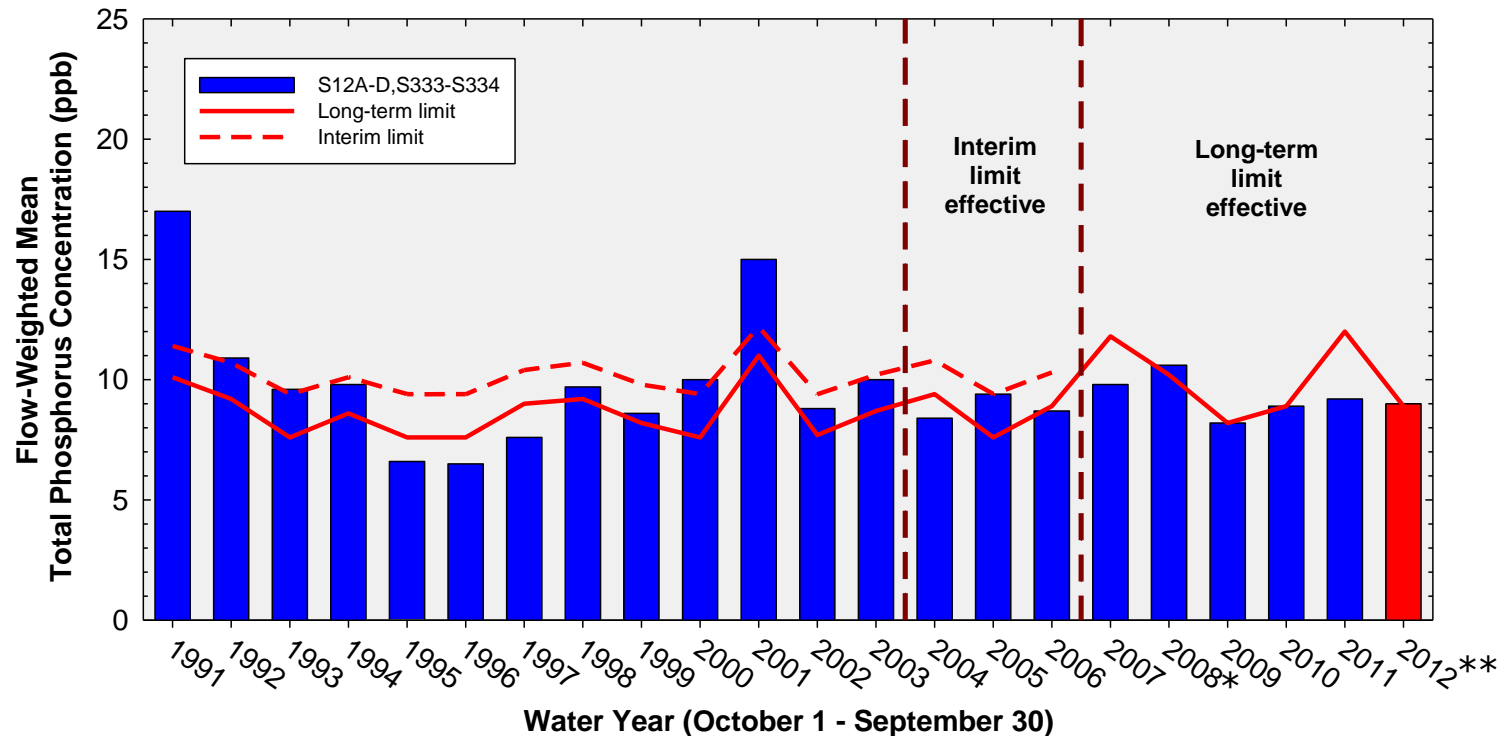
Refuge TP Compliance Tracking For October 2012 – February 2013

Month	Geometric Mean TP Concentration (ppb)	Long-Term Level (ppb) Effective 12/31/2006	Average Stage (feet NGVD 29)	Number of Samples
Oct-2012	7.6*	7.2	17.20	14
Nov-2012	6.1	7.3	17.11	14
Dec-2012	6.7	8.3	16.82	14
Jan-2013	7.2	9.1	16.62	14
Feb-2013	6.7	10.3	16.36	13

Note: January and February 2013 values are preliminary.

* October 2012 14-station geometric mean was higher than the long-term level.

Annual Flow-weighted Mean Concentrations Inflows to ENP through Shark River Slough

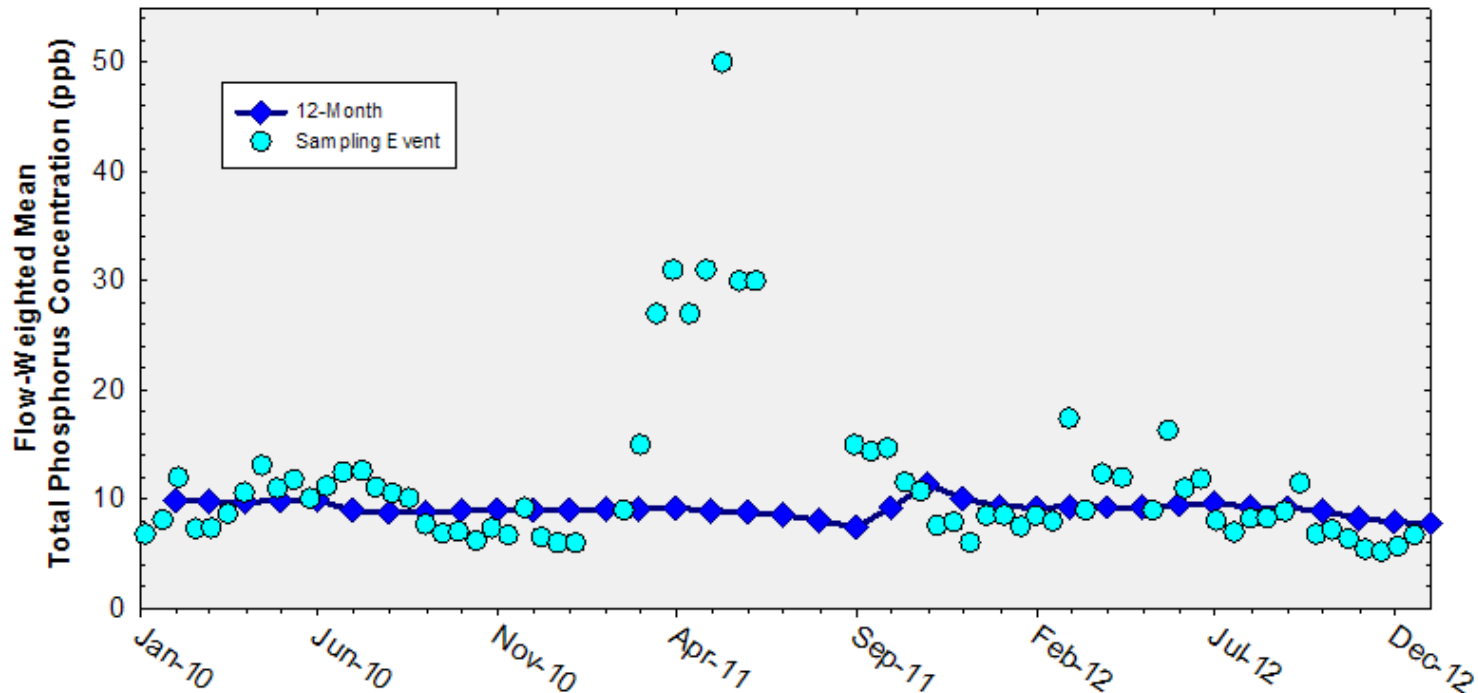


12-month FWMC at the end of each water year compared to the TP interim and long-term limits

* TOC determined WY2008 exceedance did not constitute a violation of the long-term limit.

** WY2012 FWMC exceeded the long-term limit.

Flow-Weighted Mean Concentrations Inflows to ENP through Shark River Slough

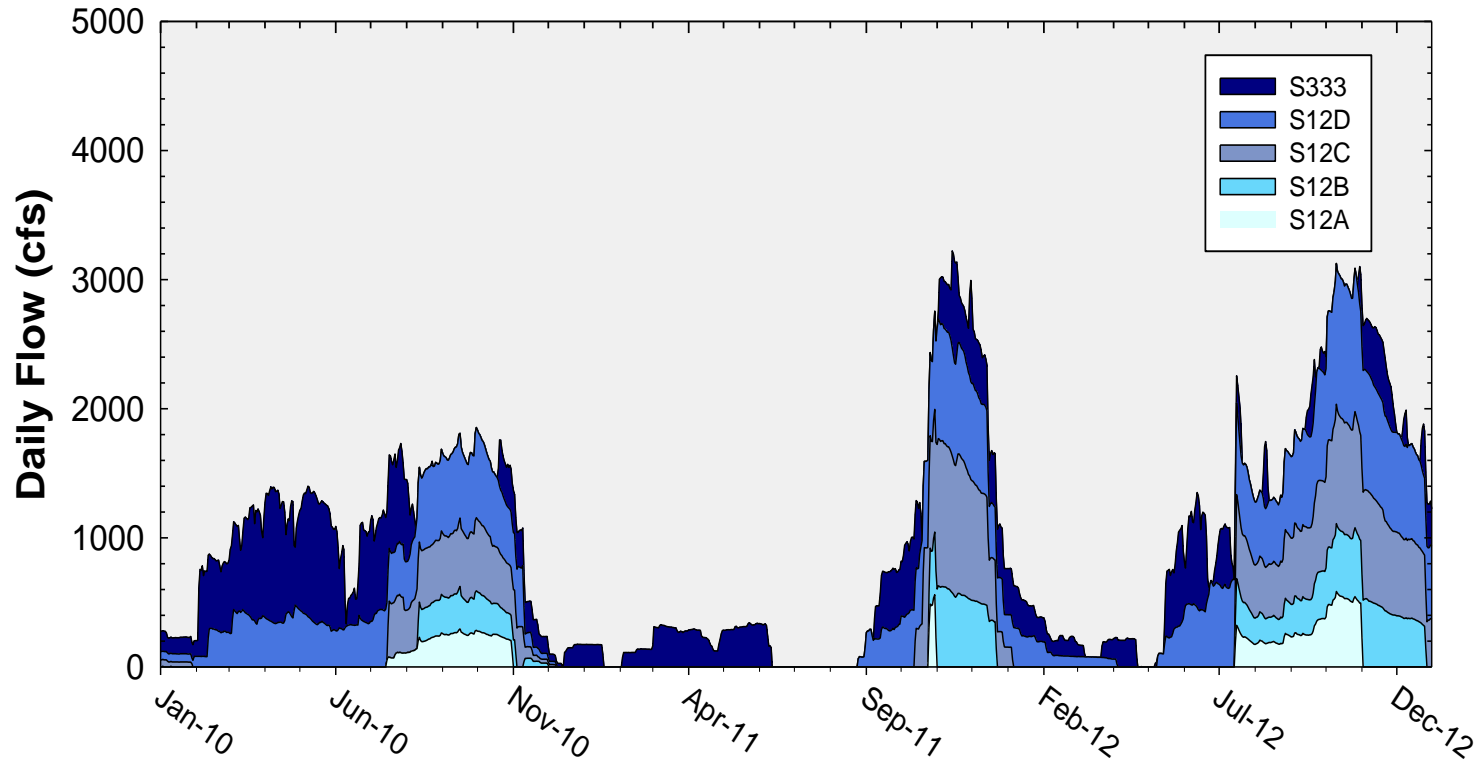


12-month FWMC at the end of each month and the composite TP concentration for each sampling event

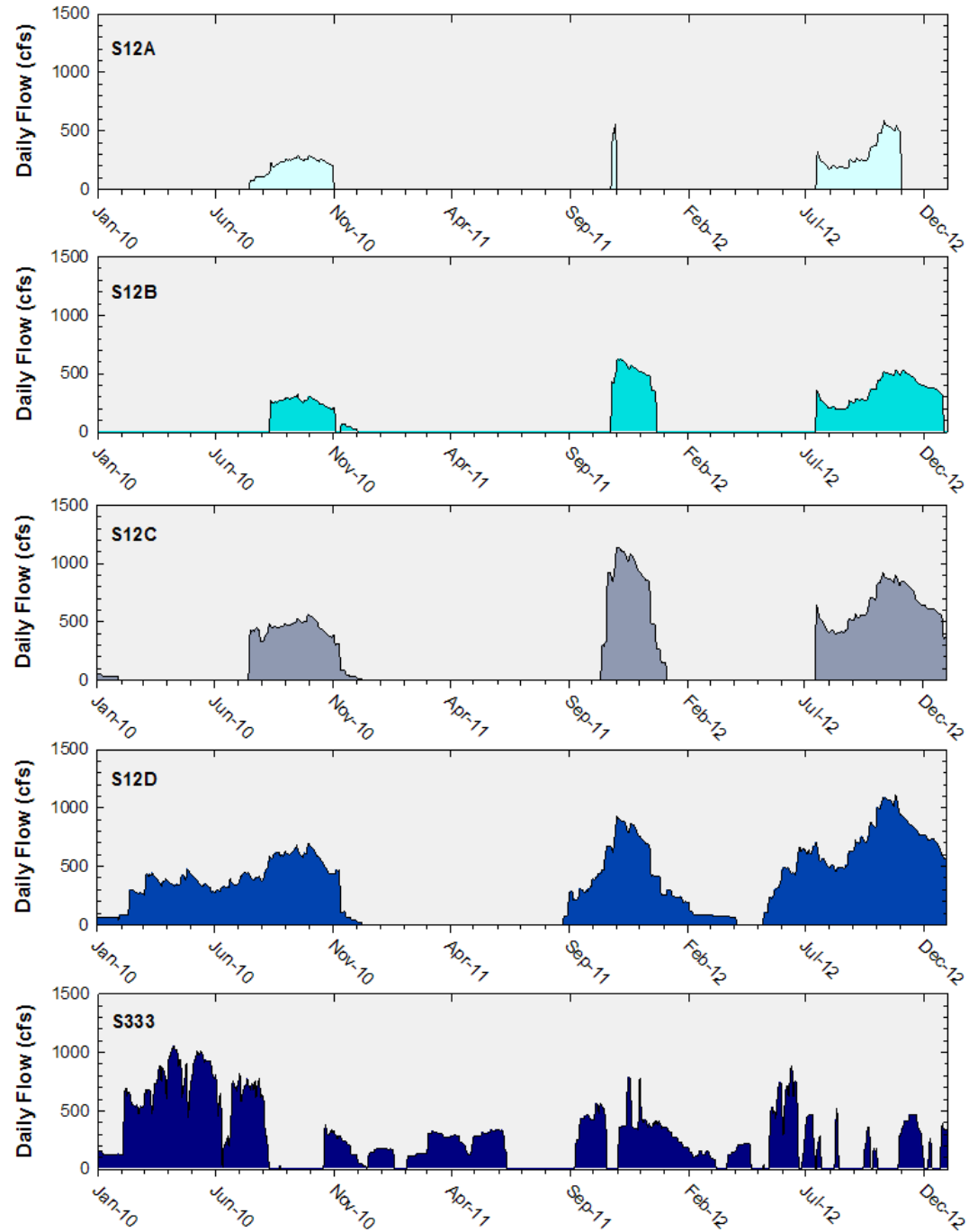
Shark River Slough TP Concentration Compliance Tracking for October 2012 – December 2012

12-Month Period	Total Flow (kac-ft)	Flow-Weighted Mean TP Concentration (ppb)	Long-Term Limit (ppb) <i>Effective 12/31/2006</i>	Percent of Sampling Events Greater than 10 ppb	
				Guideline	Observed
Nov 2011 - Oct 2012	909.8	8.3	8.4	43.6	28.0
Dec 2011 - Nov 2012	882.4	7.9	8.5	44.3	28.0
Jan 2011 - Dec 2012	873.1	7.8	8.5	44.5	28.0

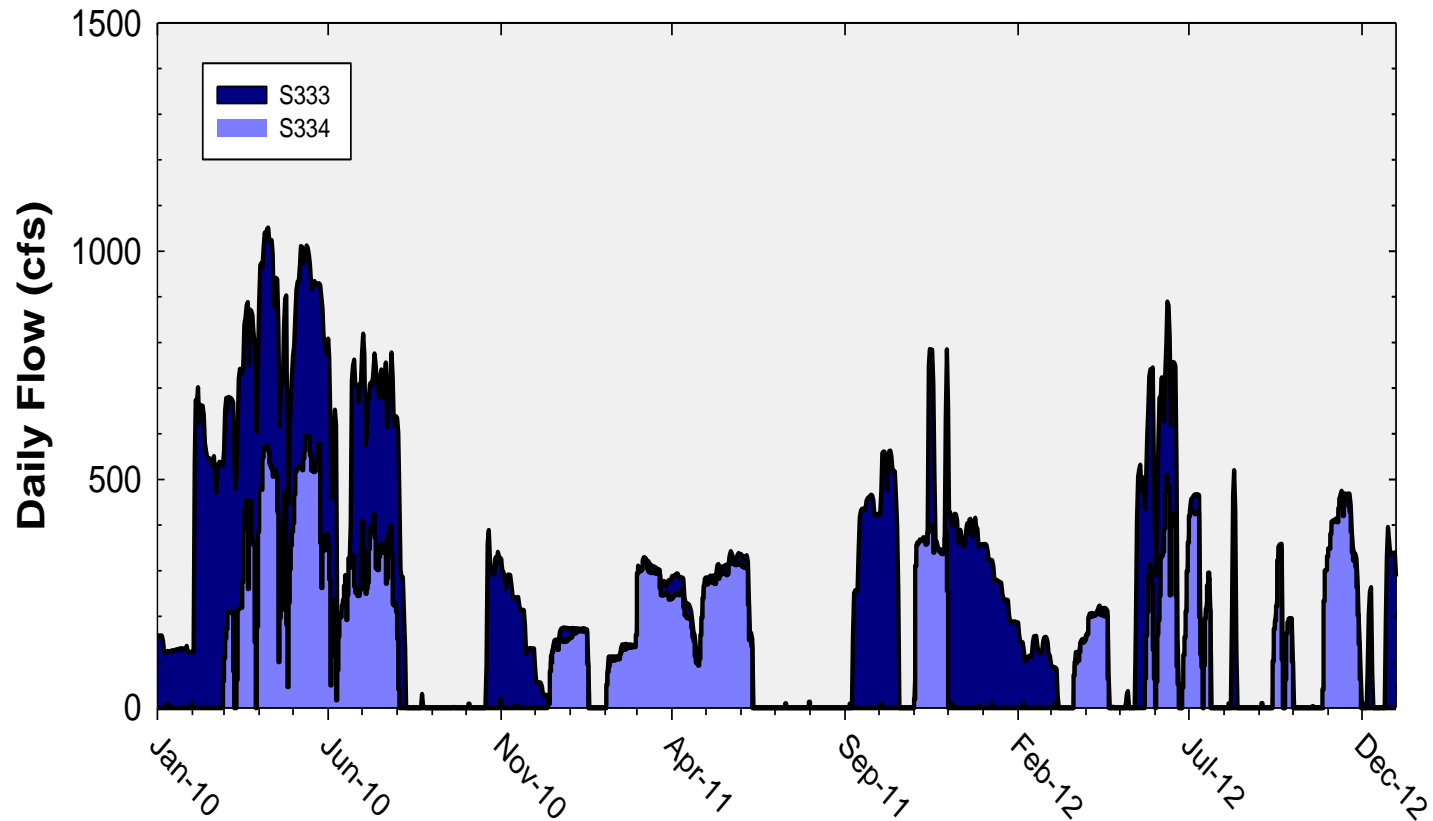
Shark River Slough Daily Flows



Daily Flows at individual inflow structures to Shark River Slough

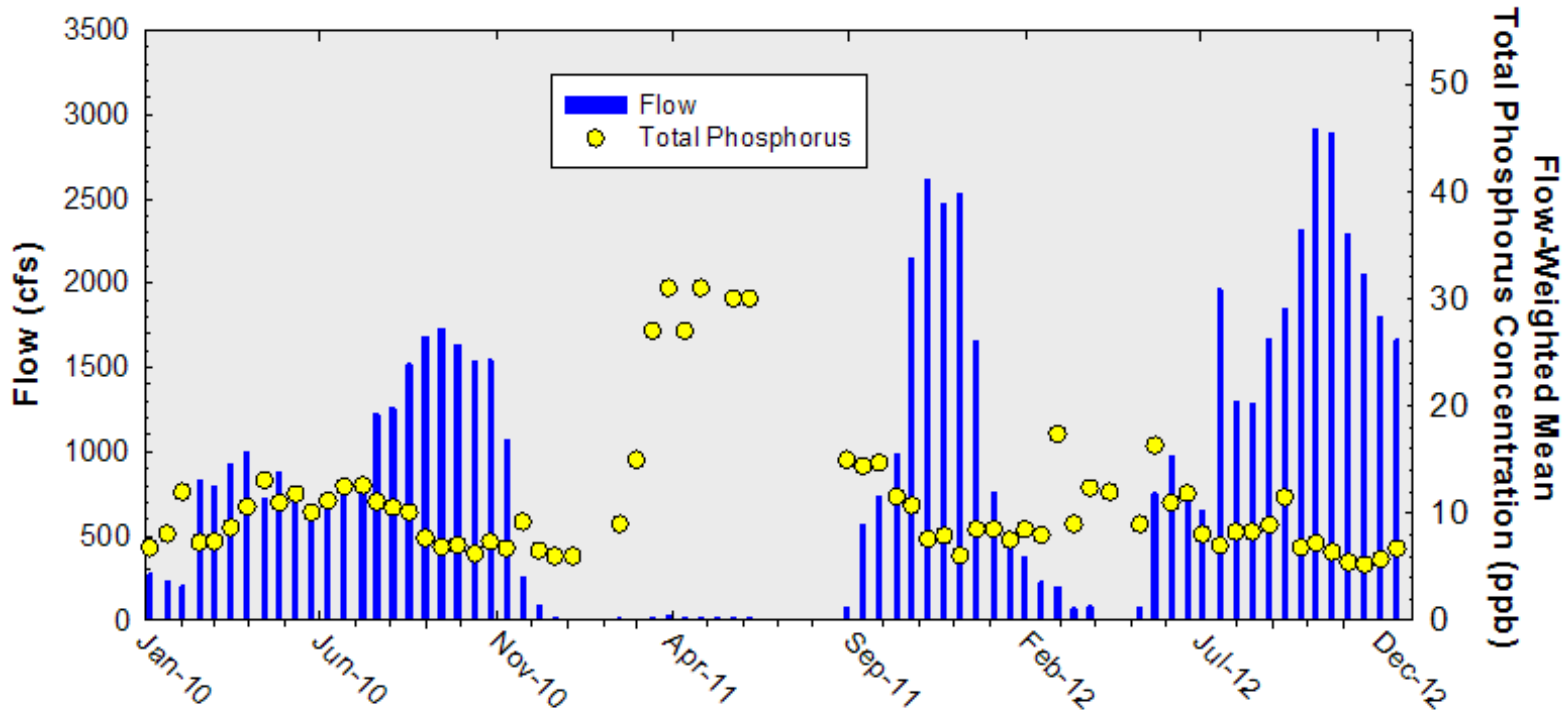


Daily Flows at S333 and S334



Shark River Slough

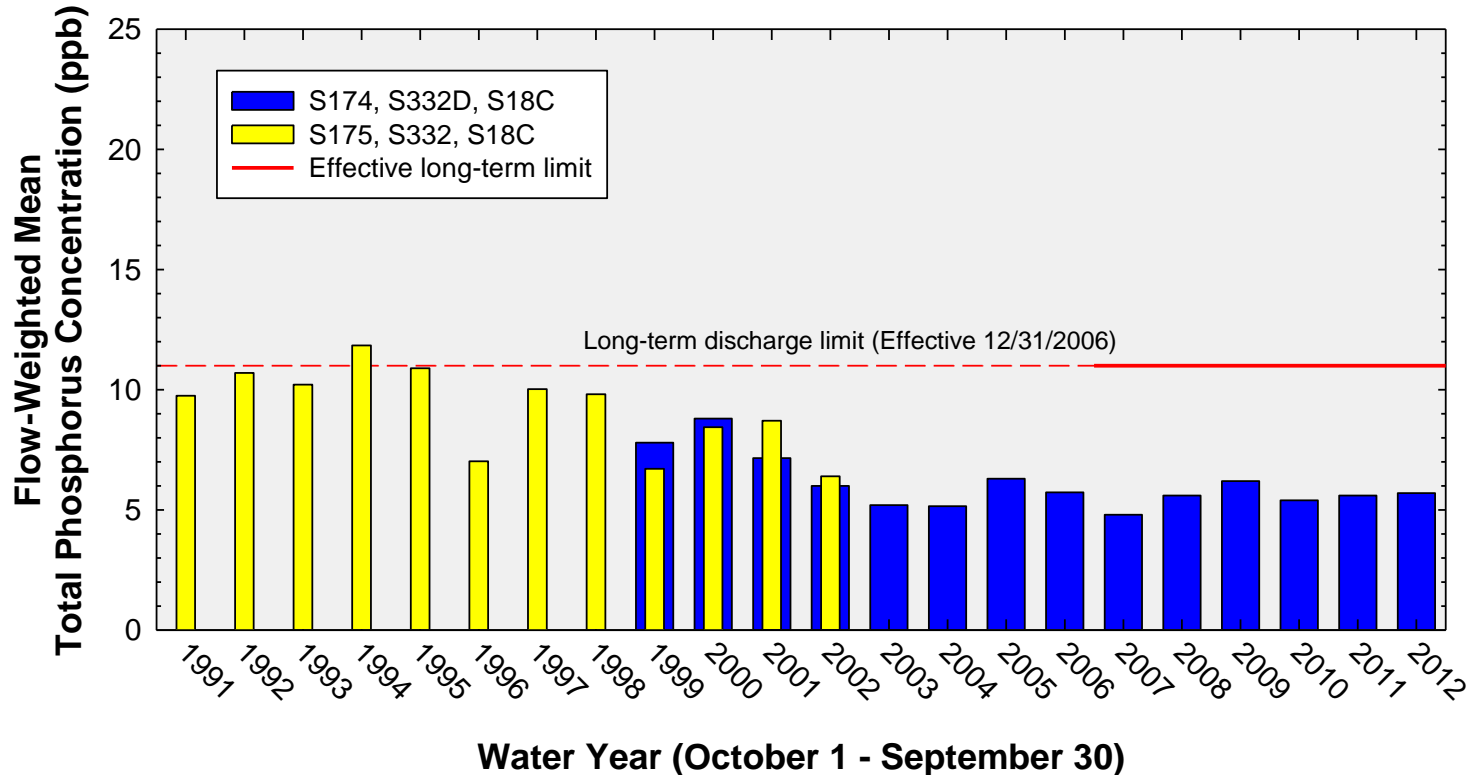
Sampling Event Flow and FWMC



Flow at Shark River Slough structures and the corresponding TP FWMCs for individual sampling events

Annual Flow-Weighted Mean Concentrations

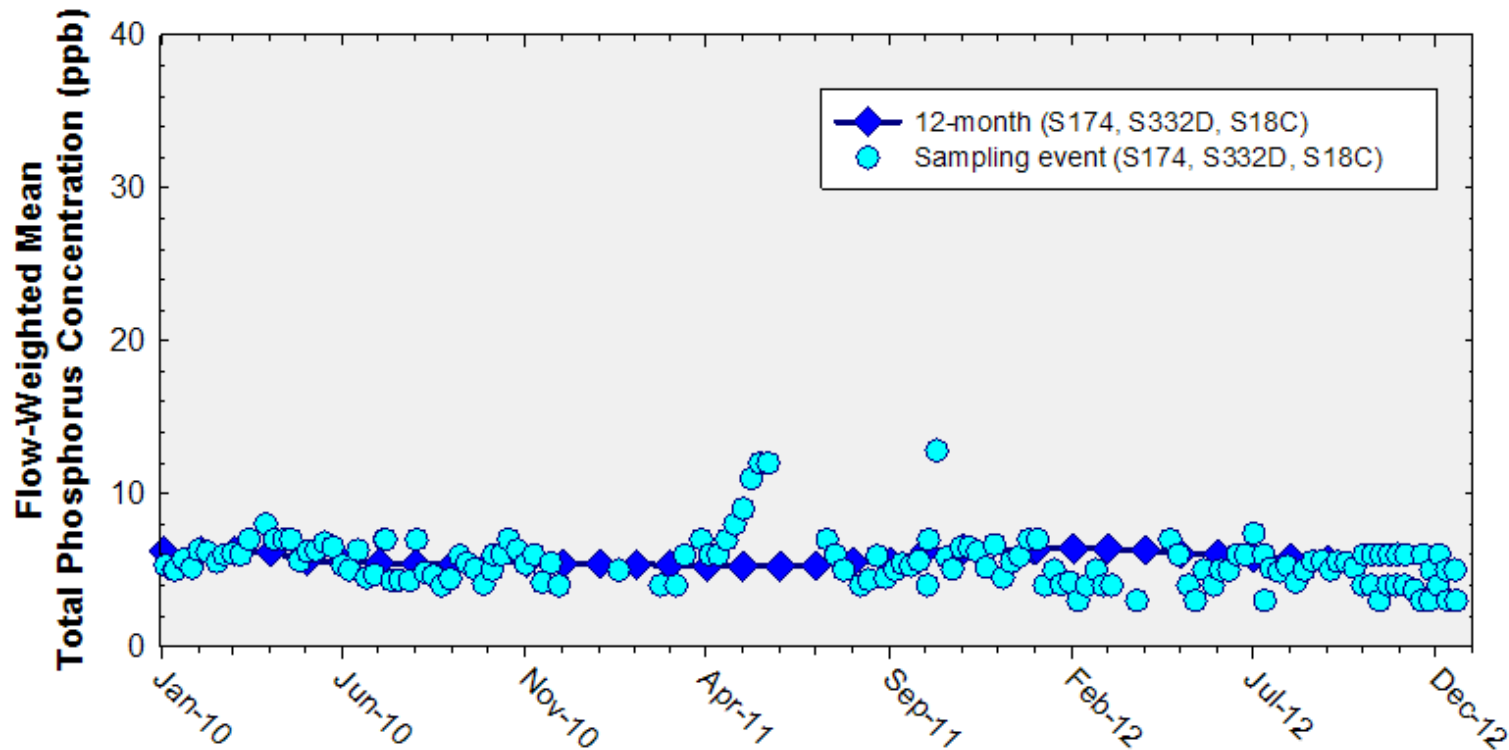
Inflows to the ENP through Taylor Slough and Coastal Basins



The 12-month FWMC at the end of each water year compared to the 11 ppb long-term TP limit

Flow-Weighted Mean Concentrations

Inflows to the ENP through Taylor Slough and Coastal Basins



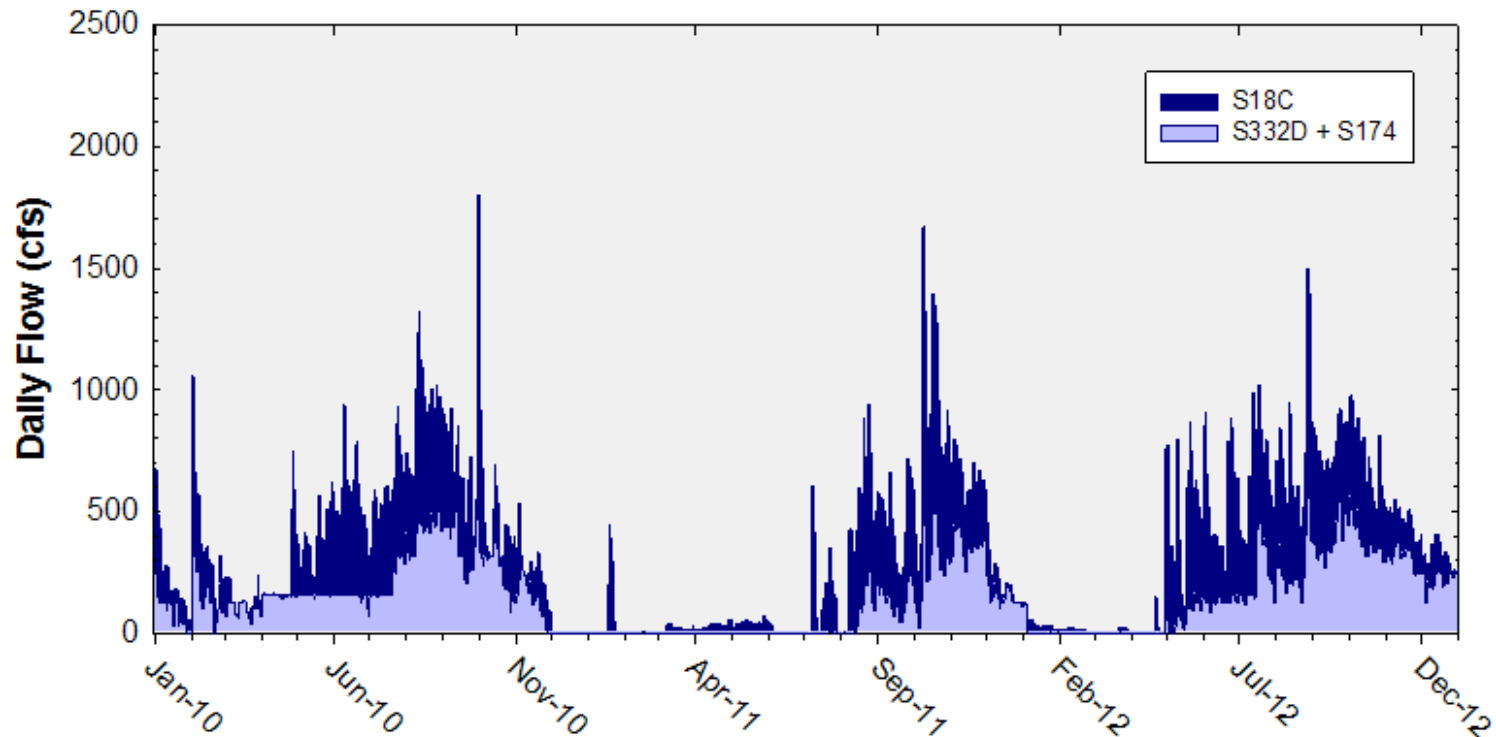
The 12-month FWMC at the end of each month and the composite TP concentration for each sampling event

Taylor Slough and the Coastal Basins

TP Concentration Compliance Tracking for October 2012 – December 2012

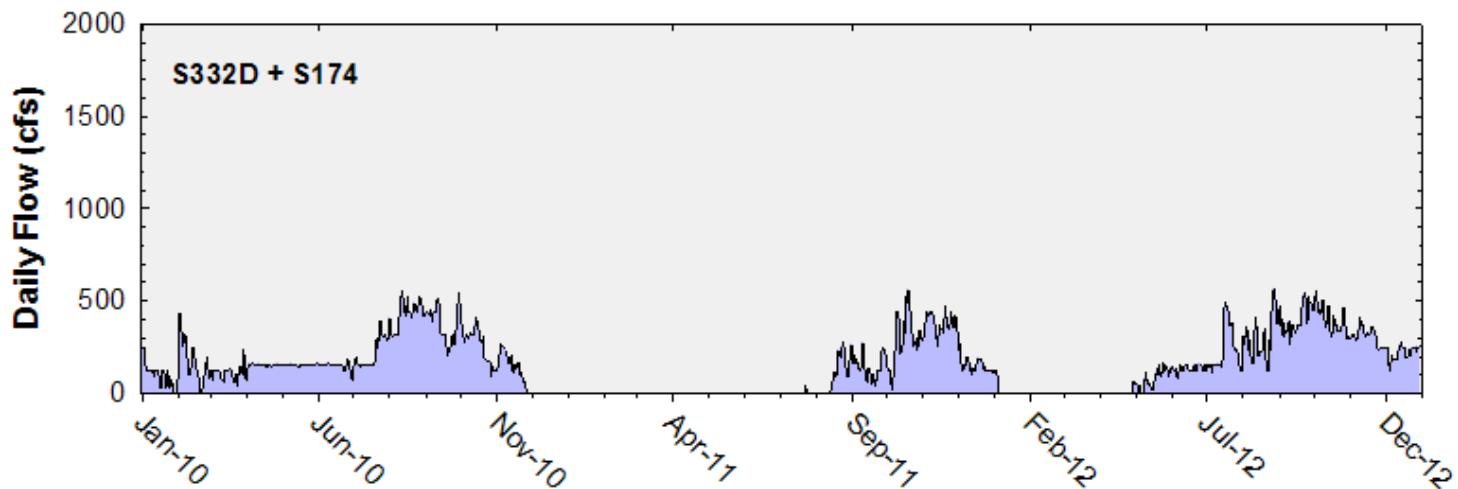
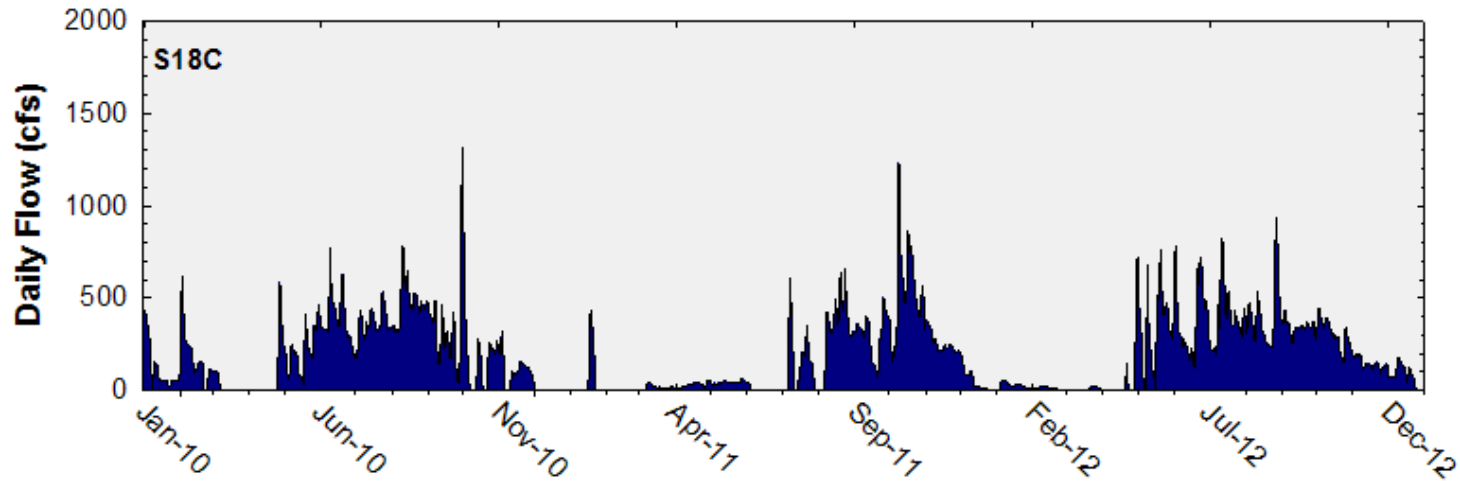
12-Month Period	Total Flow (kac-ft)	Flow-Weighted Mean TP Concentration (ppb)	Long-Term Limit (ppb) <i>Effective 12/31/2006</i>	Percent of Sampling Events Greater than 10 ppb	
				Guideline	Observed
Nov 2011 - Oct 2012	283.6	5.3	11.0	53.1	0.0
Dec 2011 - Nov 2012	273.0	5.1	11.0	53.1	0.0
Jan 2012 - Dec 2012	279.6	5.1	11.0	53.1	0.0

Taylor Slough and Coastal Basins Daily Flows

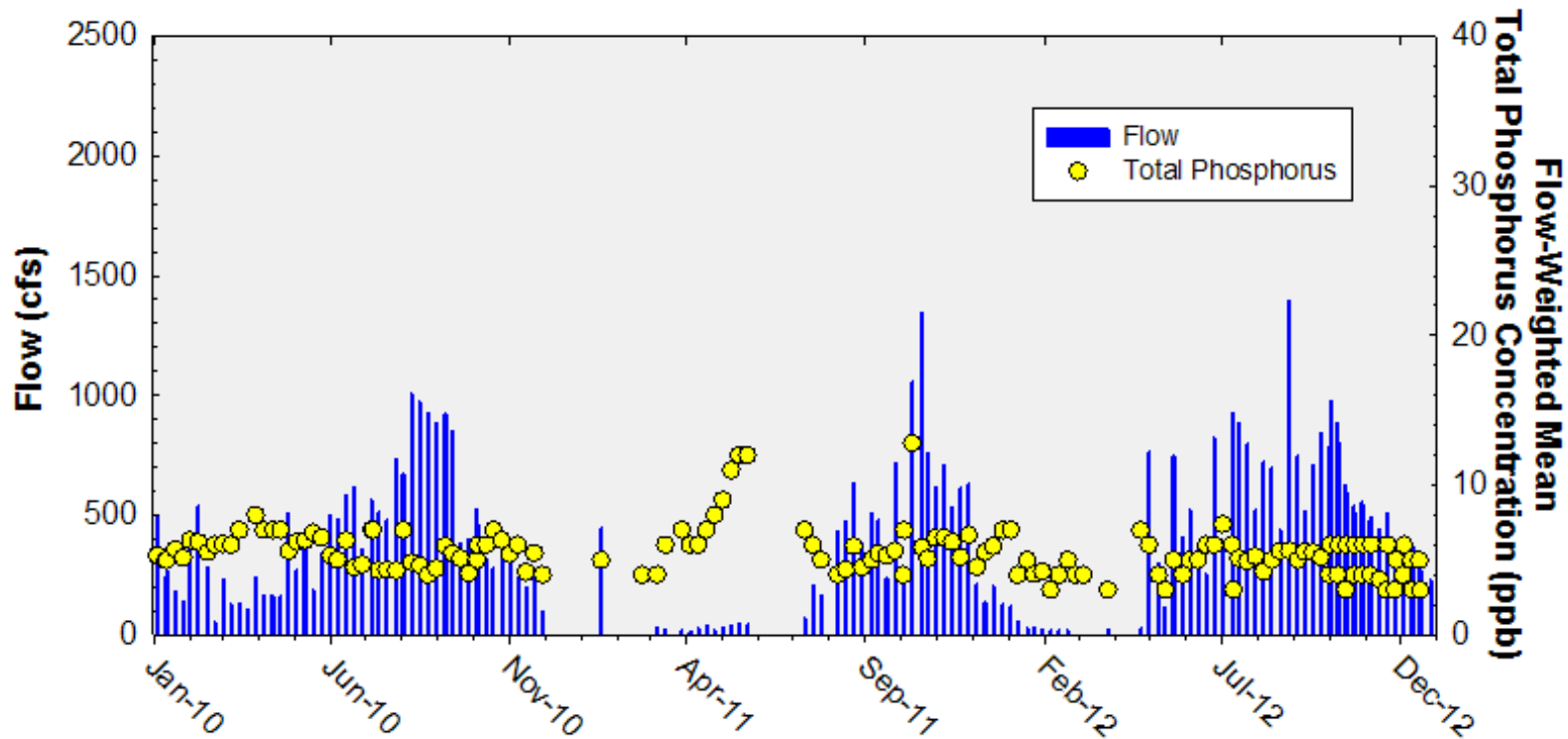


**Daily flows into Everglades National Park
through Taylor Slough and Coastal Basins**

Daily Flows at individual Taylor Slough and Coastal Basins structures into the ENP



Taylor Slough and Coastal Basins Sampling Event Flow and FWMC



Flow at Taylor Slough and Coastal Basins structures and the corresponding TP FWMCs for individual sampling events

Thank You

