



# SETTLEMENT AGREEMENT REPORT

## WY2015 Annual Shark River Slough Compliance

Jonathan P. Madden, P.E.

*Section Leader*

Compliance Assessment & Reporting Section

Water Quality Bureau

**Technical Oversight Committee**

**April 26, 2016**



[sfwmd.gov](http://sfwmd.gov)

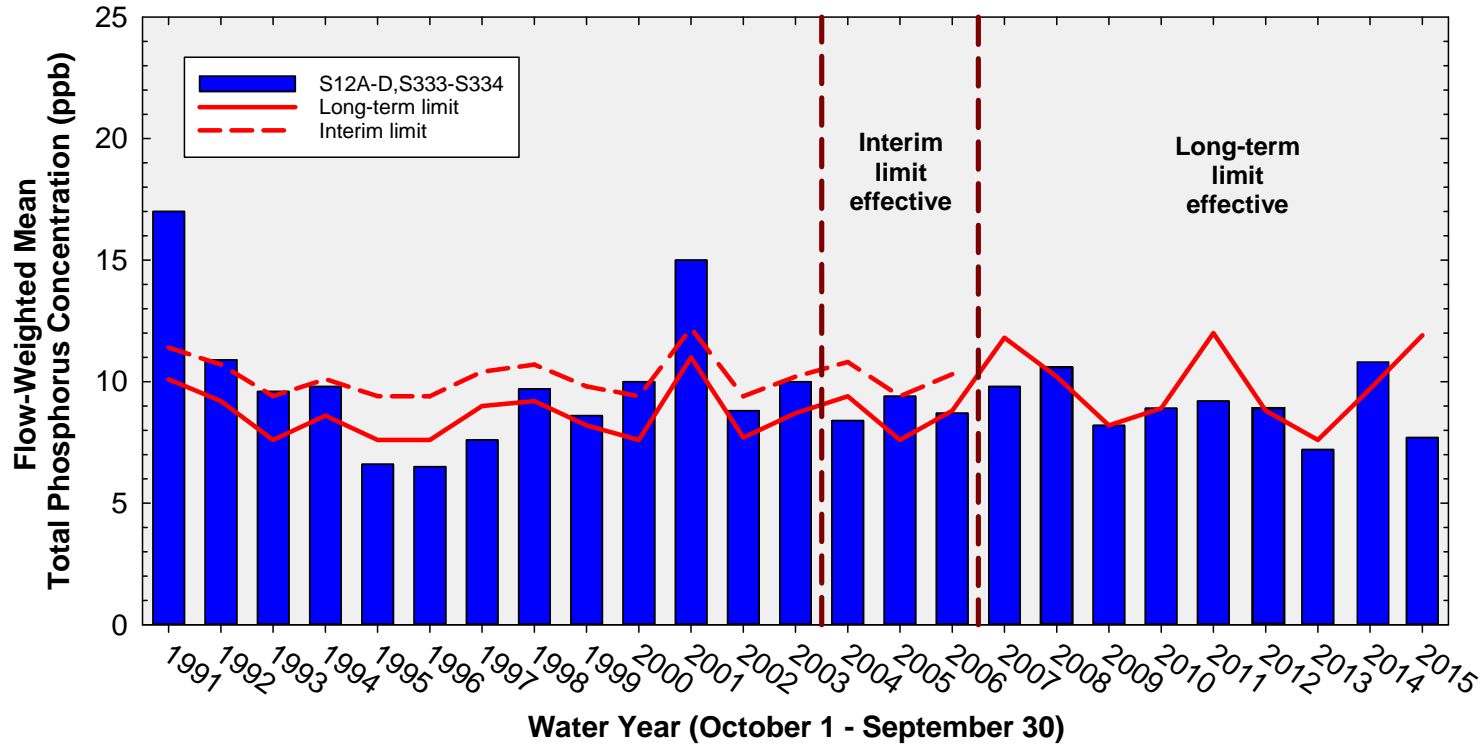
# SUMMARY

Month	Geometric Mean TP Concentration (ppb)	Long-term Level (ppb)	Mean Stage (feet NGVD 29)	Number of Samples	
<b>Arthur R. Marshall Loxahatchee National Wildlife Refuge</b>					
Jul 2015	18.0	NA	15.19	2	
Aug 2015	12.3	14.1	15.78	8	
Sep 2015	10.9	11.1	16.23	14	
12-Month Period Ending	Total Flow (kac-ft)	12-Month Flow-weighted Mean TP Concentration (ppb)	Long-term Limit (ppb)	Percent of Sampling Events Greater than 10 ppb	
				Guideline	Observed
<b>Everglades National Park – Shark River Slough</b>					
Jul 2015	429.7	8.8	10.9	57.6	17.6
Aug 2015	354.2	8.0	11.4	60.2	6.7
Sep 2015	267.0	7.7	11.9	63.4	7.7
<b>Everglades National Park – Taylor Slough and Coastal Basins</b>					
Jul 2015	154.4	4.4	11.0	53.1	0.0
Aug 2015	124.1	4.5	11.0	53.1	0.0
Sep 2015	117.8	4.5	11.0	53.1	0.0

## Shark River Slough TP Concentration Compliance Tracking for July 2015 – September 2015

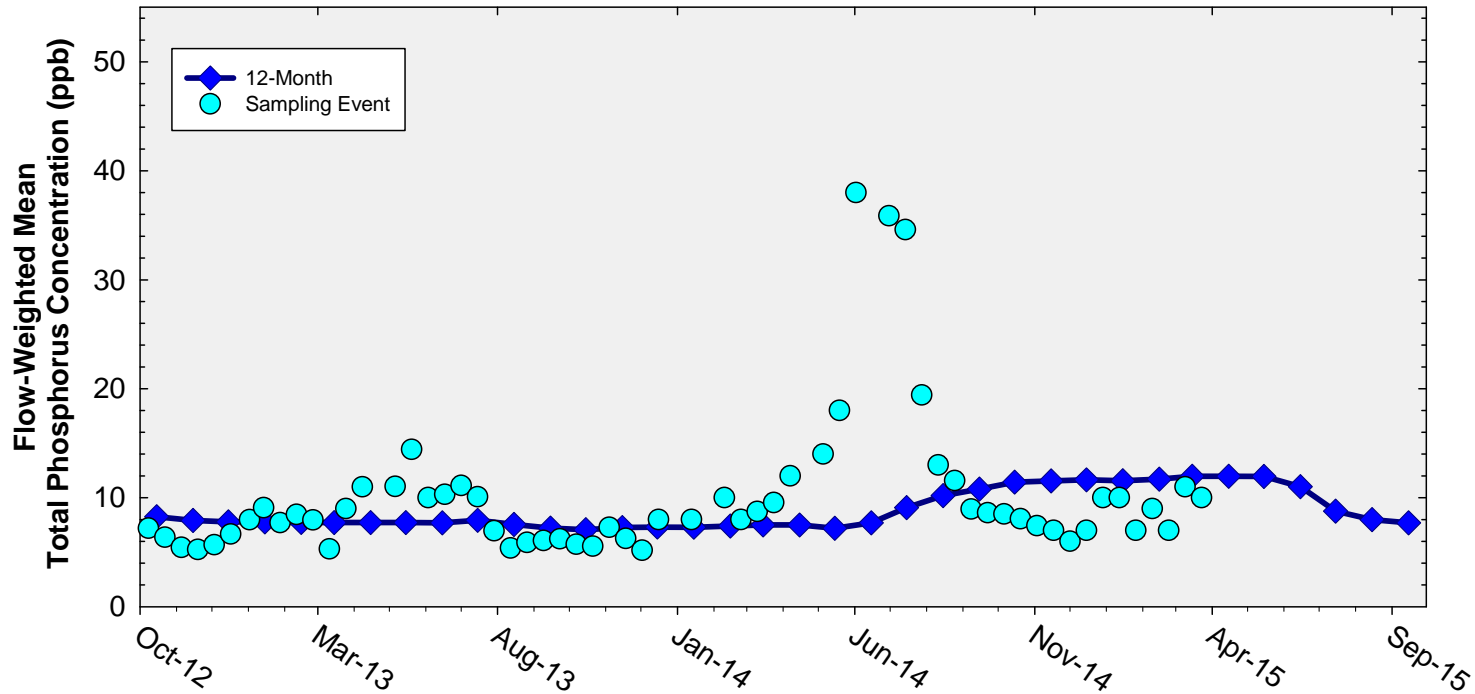
12-Month Period	Total Flow (kac-ft)	Flow-Weighted Mean TP Concentration (ppb)	Long-Term Limit (ppb) <i>Effective 12/31/2006</i>	Percent of Sampling Events Greater than 10 ppb	
				Guideline	Observed
Aug 2014 - Jul 2015	429.7	8.8	10.9	57.6	17.6
Sep 2014 - Aug 2015	354.2	8.0	11.4	60.2	6.7
Oct 2014 - Sep 2015	267.0	7.7	11.9	63.4	7.7

# Annual Flow-weighted Mean Concentrations Inflows to ENP through Shark River Slough



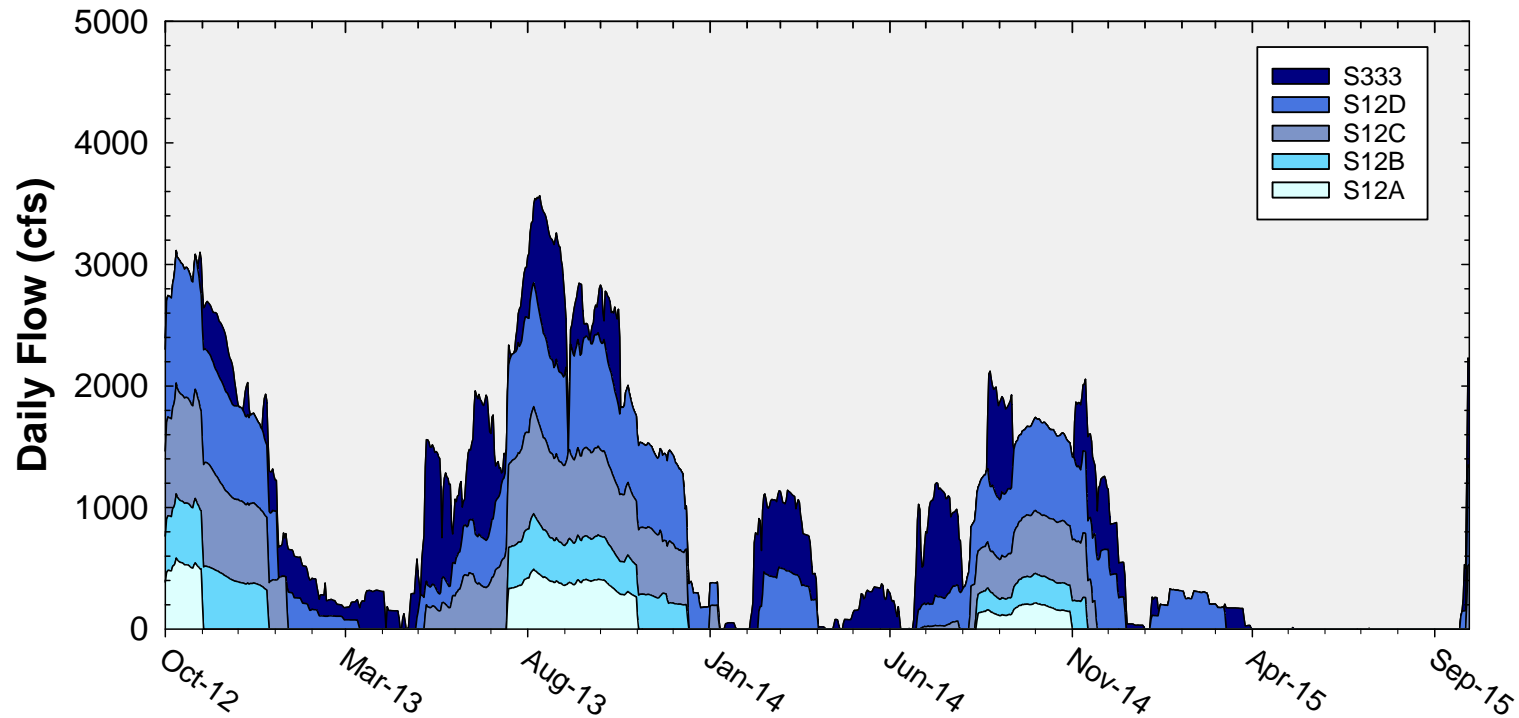
Water year (12-month) FWMC compared to the TP interim and long-term limits

## Flow-Weighted Mean Concentrations Inflows to ENP through Shark River Slough

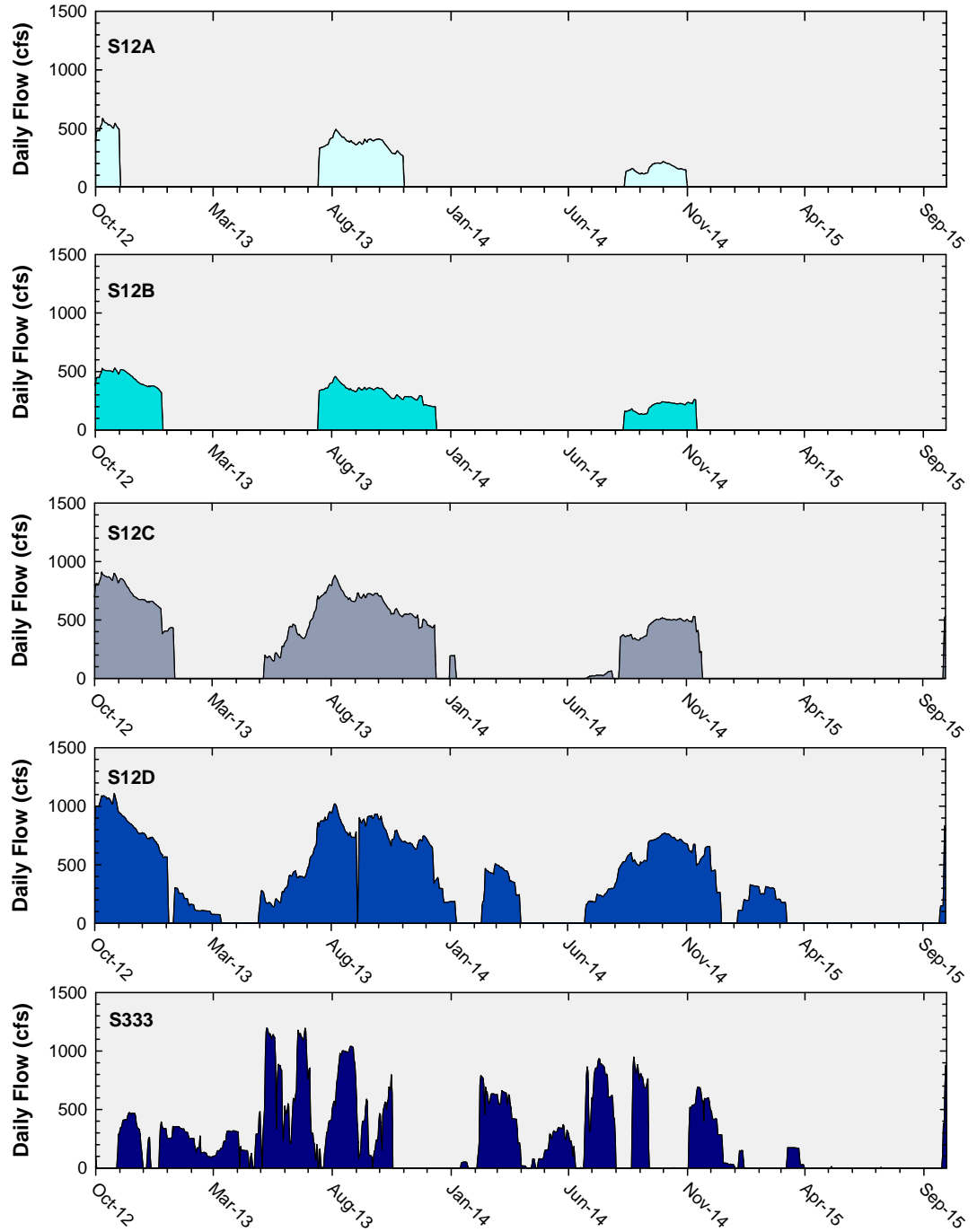


The composite TP concentration and 12-month FWMC at the end of each month for each sampling event

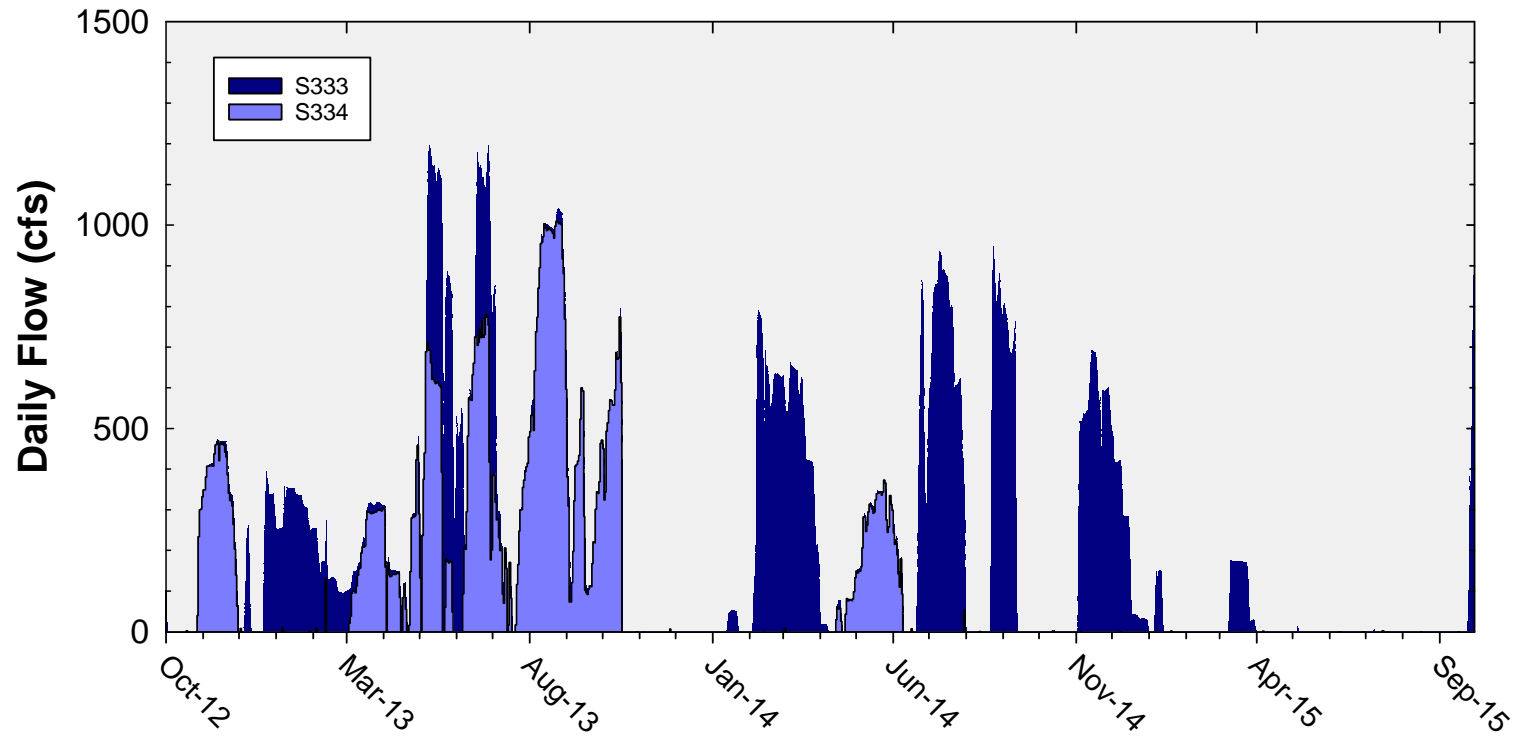
## Shark River Slough Daily Flows



# Daily Flows at individual inflow structures to Shark River Slough



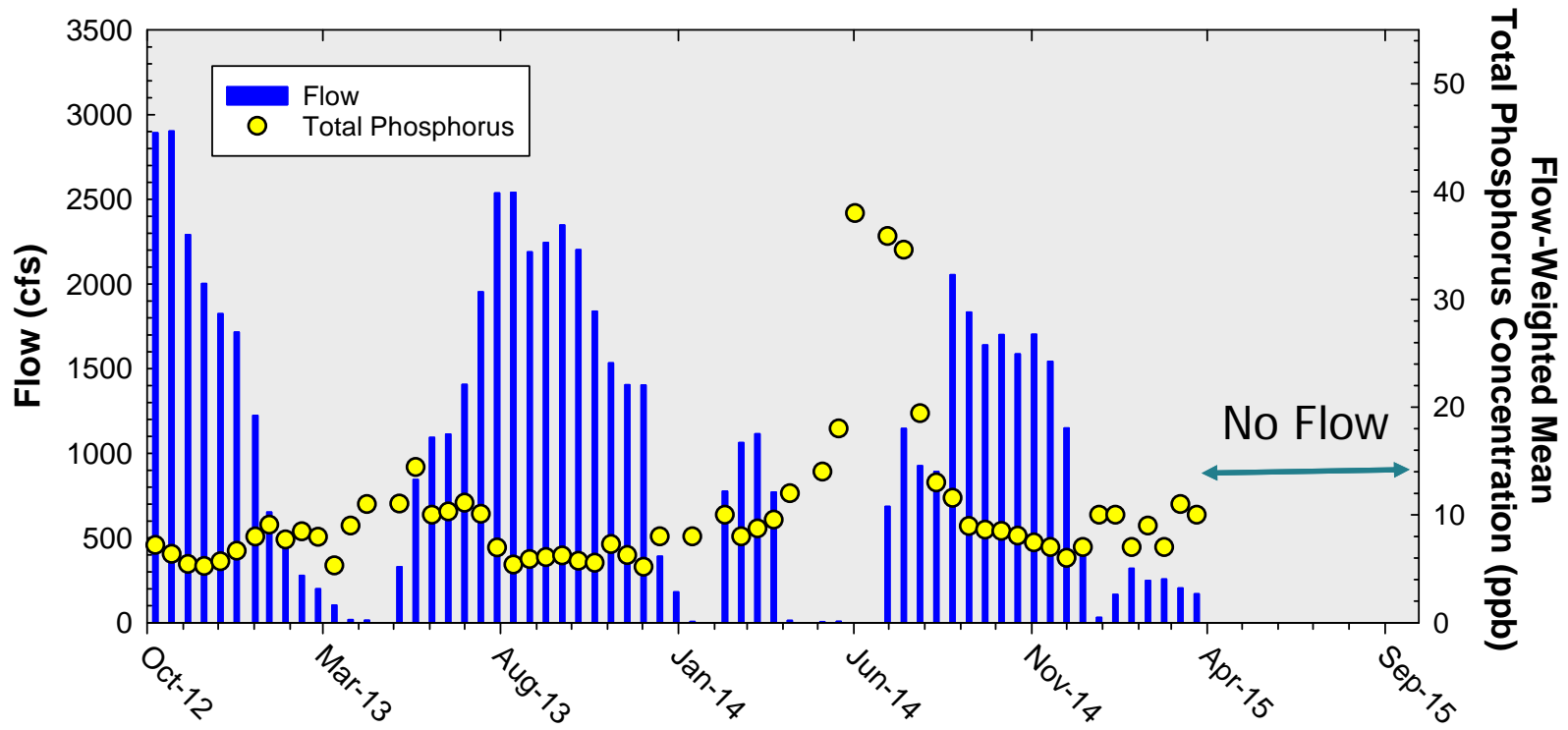
## Daily Flows at S333 and S334





# Shark River Slough

## Sampling Event Flow and FWMC



**Flow at Shark River Slough structures and the corresponding TP FWMCs for individual sampling events**

Thank You

