

SETTLEMENT AGREEMENT REPORT

July – September 2013

WY2013 Annual Shark River Slough Compliance

Stuart Van Horn, P.E.

Section Leader

Compliance Assessment & Reporting Section
Water Quality Bureau

Technical Oversight Committee

July 29, 2014



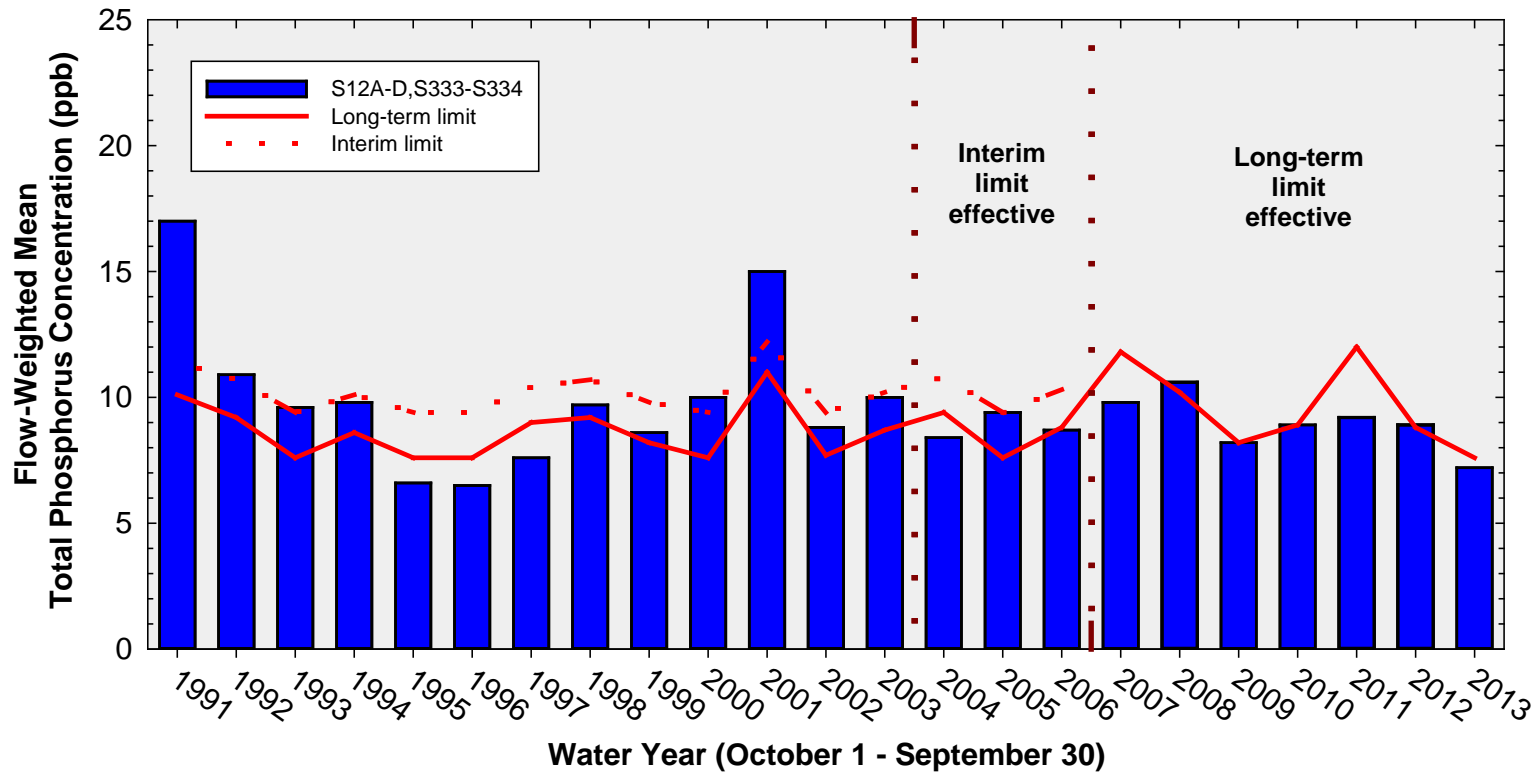
SUMMARY

Month	Geometric Mean TP Concentration (ppb)	Long-term Level (ppb)	Mean Stage (feet NGVD 29)	Number of Samples	
Arthur R. Marshall Loxahatchee National Wildlife Refuge					
Jul 2013	6.5	9.8	16.48	14	
Aug 2013	5.8	9.4	16.55	14	
Sep 2013	7.0	10.3	16.38	14	
12-Month Period Ending	Total Flow (kac-ft)	12-Month Flow-weighted Mean TP Concentration (ppb)	Long-term Limit (ppb)	Percent of Sampling Events Greater than 10 ppb	
				Guideline	Observed
Everglades National Park – Shark River Slough					
Jul 2013	1007.7	7.9	7.9	41.3	28.0
Aug 2013	1122.7	7.6	7.6	40.1	28.0
Sep 2013	1152.5	7.2	7.6	40.1	24.0
Everglades National Park – Taylor Slough and Coastal Basins					
Jul 2013	264.0	4.9	11.0	53.1	1.4
Aug 2013	255.8	4.8	11.0	53.1	1.4
Sep 2013	248.0	4.8	11.0	53.1	1.3

Shark River Slough TP Concentration Compliance Interim Tracking for July 2013 – September 2013

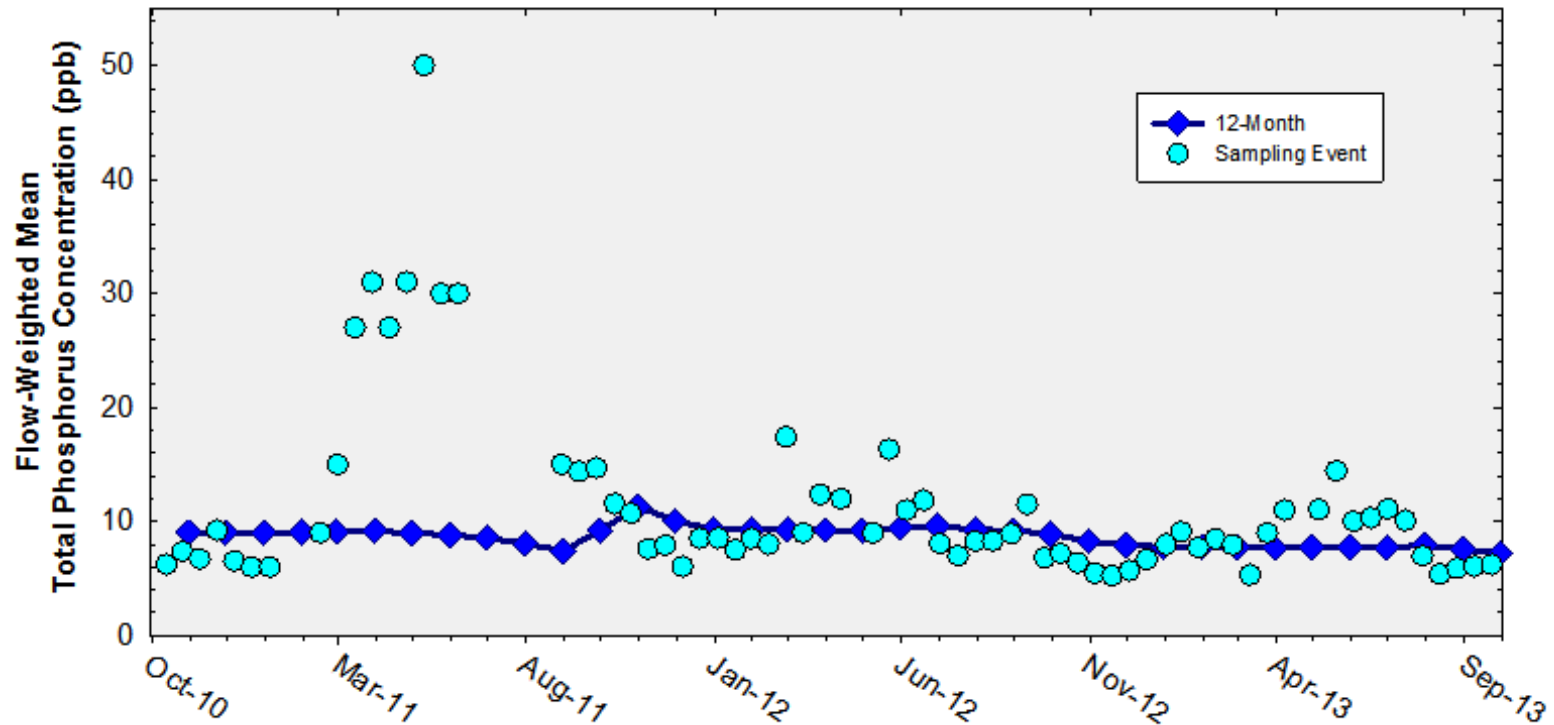
12-Month Period	Total Flow (kac-ft)	Flow-Weighted Mean TP Concentration (ppb)	Long-Term Limit (ppb) Effective 12/31/2006	Percent of Sampling Events Greater than 10 ppb	
				Guideline	Observed
Aug 2012 - Jul 2013	1007.7	7.9	7.9	41.3	28.0
Sep 2012 - Aug 2013	1122.7	7.6	7.6	40.1	28.0
Oct 2012 - Sep 2013	1152.5	7.2	7.6	40.1	24.0

Annual Flow-weighted Mean Concentrations Inflows to ENP through Shark River Slough



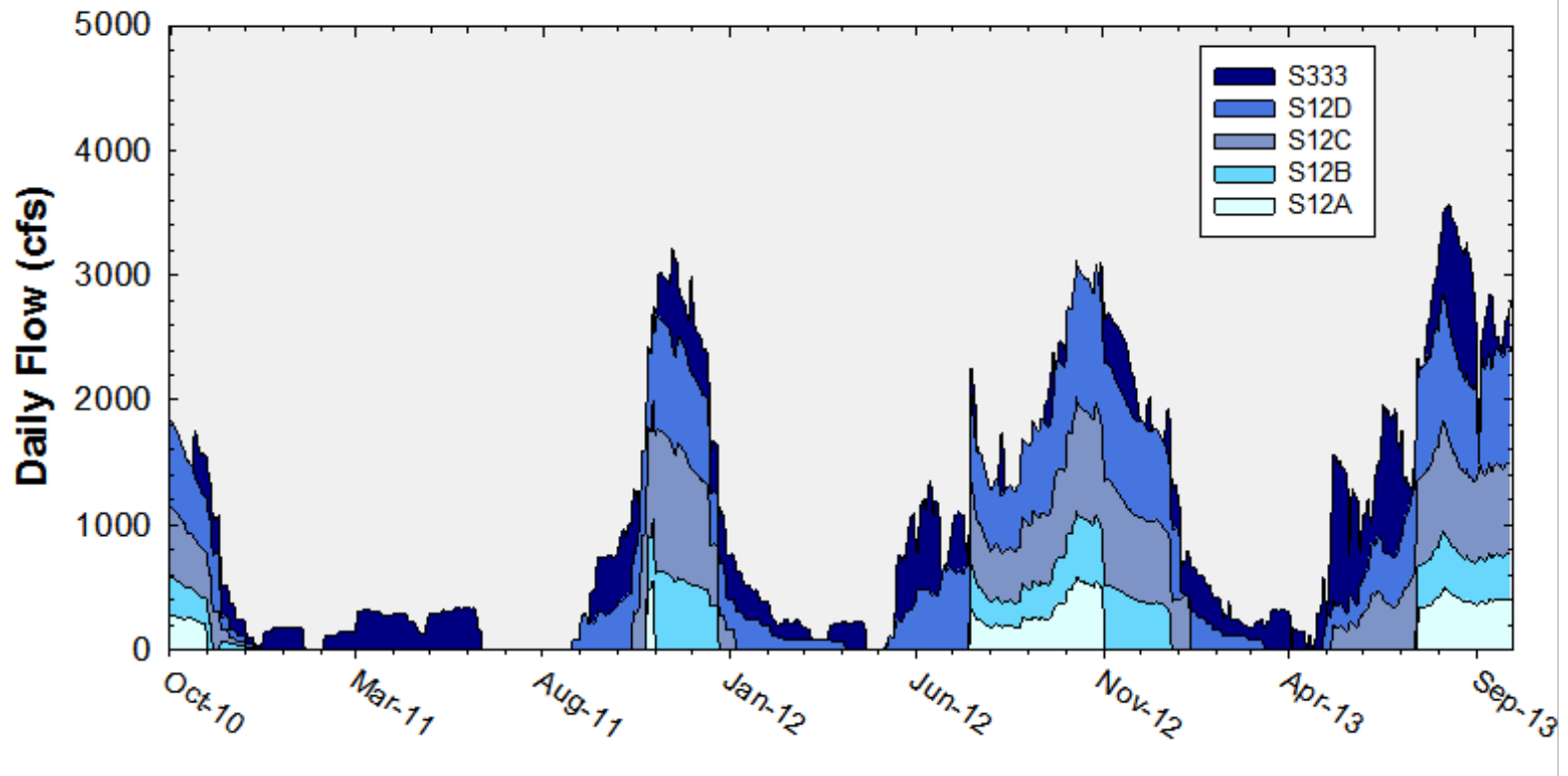
12-month FWMC at the end of each water year compared to the TP interim and long-term limits

Flow-Weighted Mean Concentrations Inflows to ENP through Shark River Slough

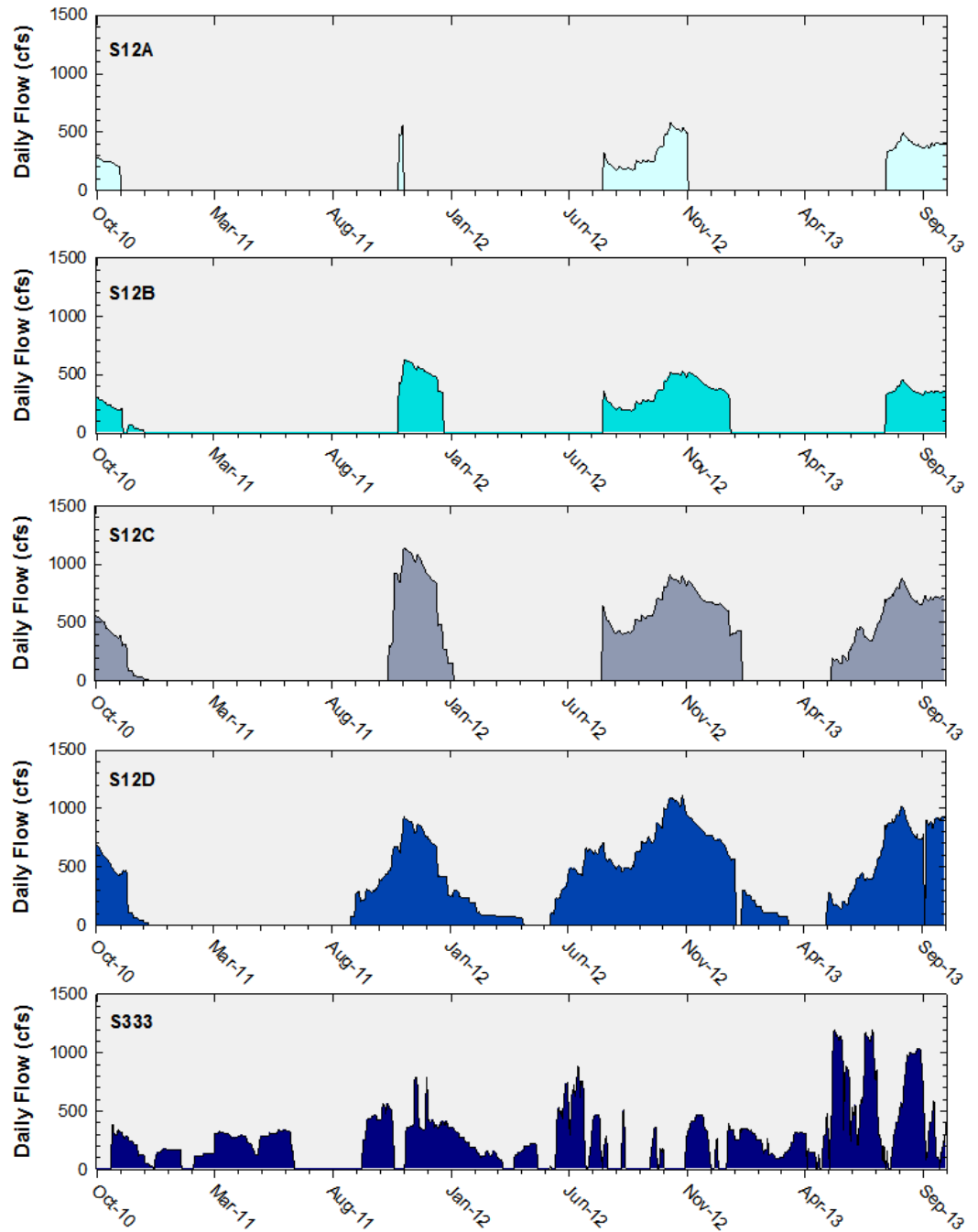


12-month FWMC at the end of each month and the composite TP concentration for each sampling event

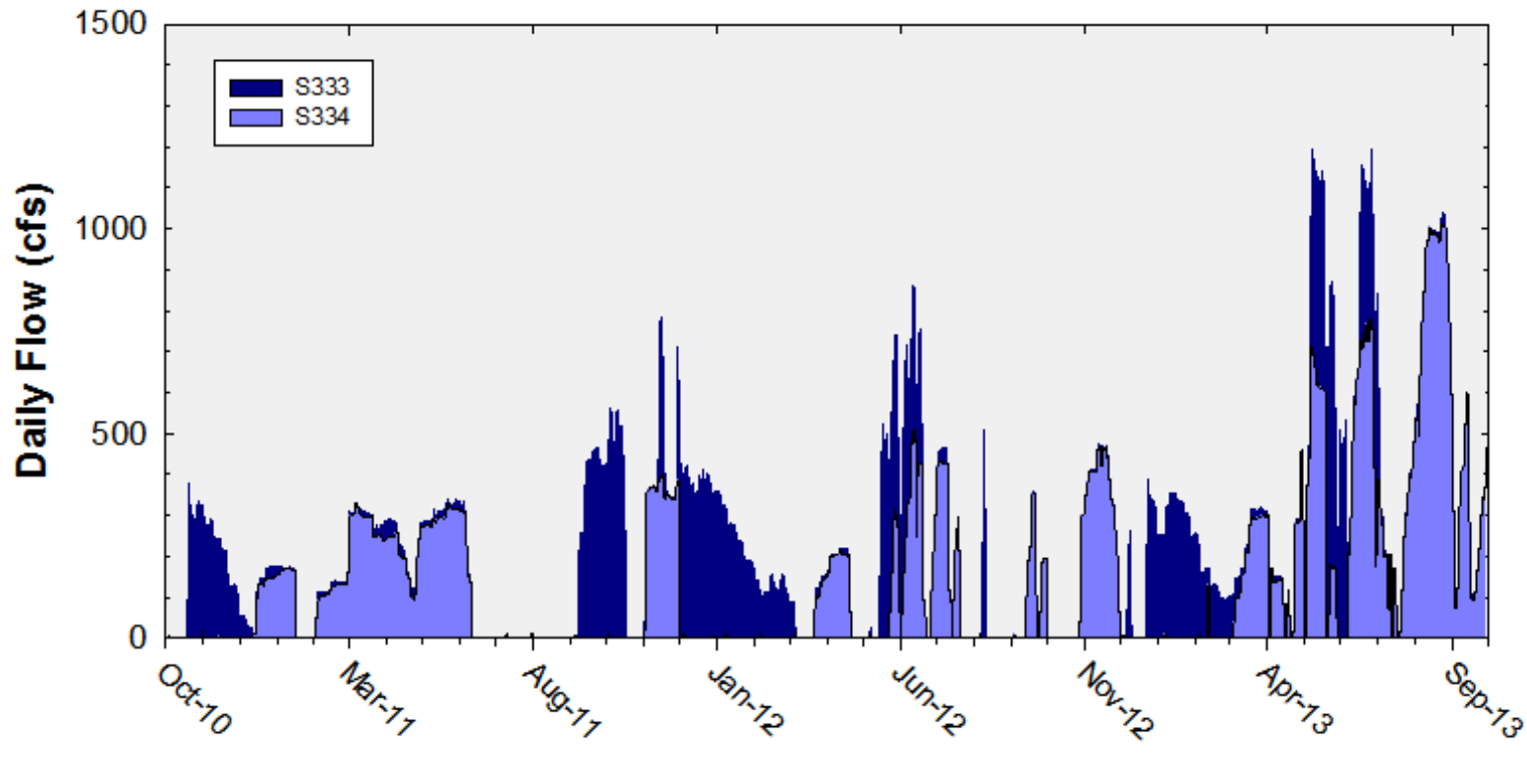
Shark River Slough Daily Flows



Daily Flows at individual inflow structures to Shark River Slough

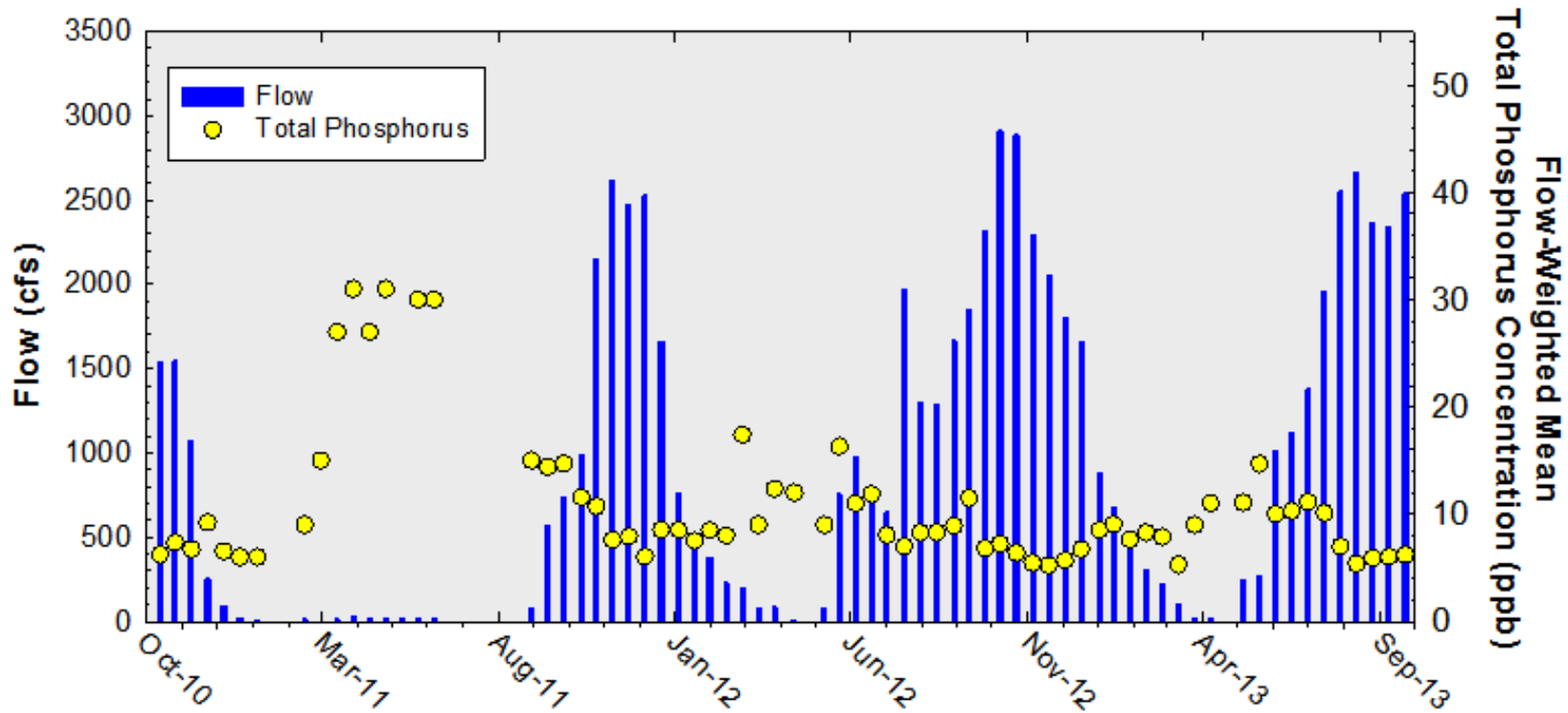


Daily Flows at S333 and S334



Shark River Slough

Sampling Event Flow and FWMC



Flow at Shark River Slough structures and the corresponding TP FWMCs for individual sampling events

Thank You

