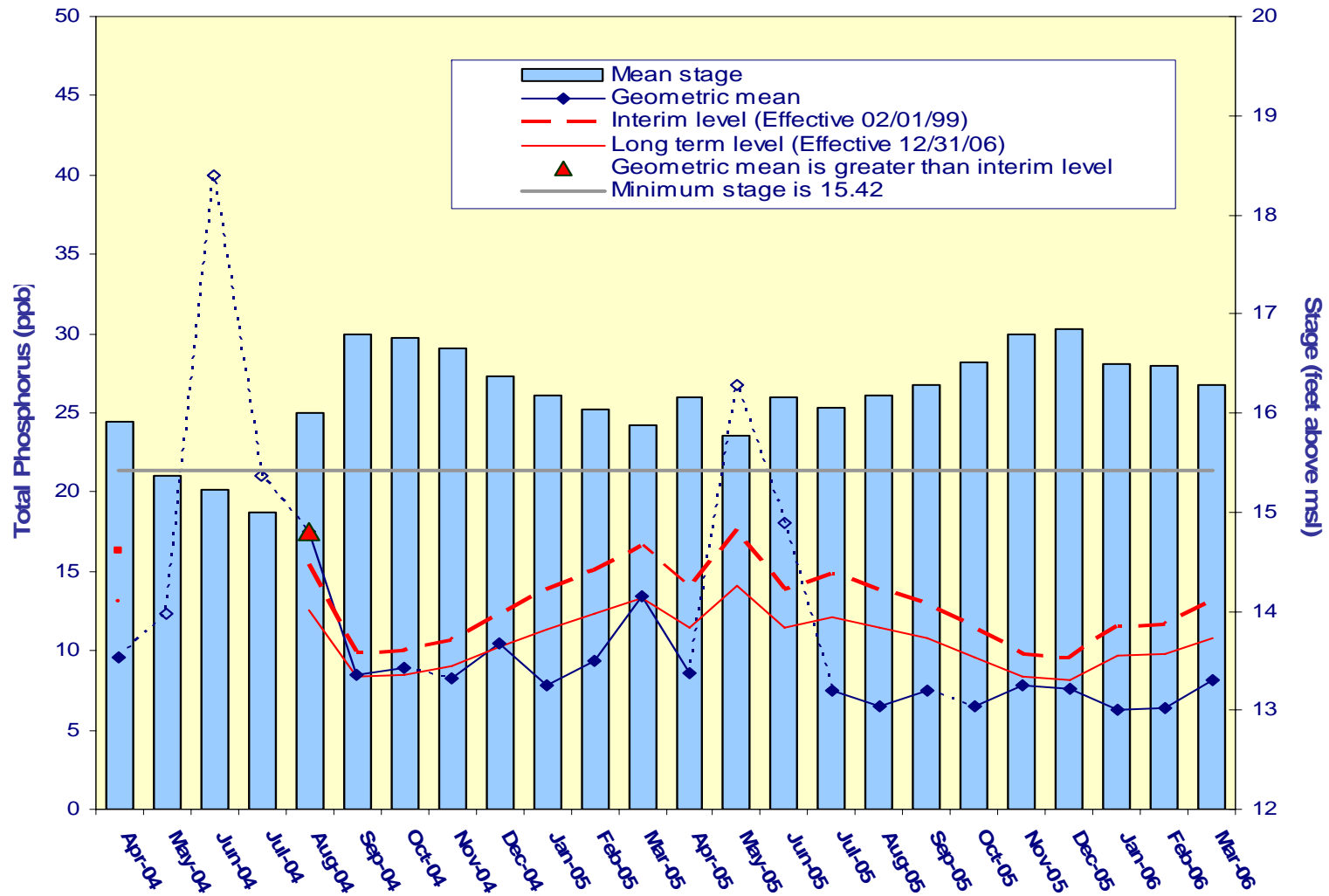


Settlement Agreement

January - March 2006

Prepared for the
Technical Oversight Committee
May 23, 2006

A.R.M Loxahatchee National Wildlife Refuge Monthly Total Phosphorus Geometric Mean Concentrations



**Loxahatchee
National Wildlife
Refuge

Total Phosphorus
Compliance
Tracking**

Month - Year	Geometric Mean Concentration	Interim Level (ppb)	Long Term Level (ppb)	Average Stage (ft NGVD)	Number of TP Samples	Number of Stage Measurements
	(ppb)	Effective 2/1/99	Effective 12/31/06			
Apr-2004	9.6	16.3	13.1	15.91	9	3
May-2004	12.4	N/A	N/A	15.37	9	3
Jun-2004	40.0	N/A	N/A	15.22	2	3
Jul-2004	21.0	N/A	N/A	15.00	1	3
Aug-2004	17.5	15.4	12.5	16.00	12	3
Sep-2004	8.5	9.9	8.4	16.79	14	3
Oct-2004	8.9	10.0	8.5	16.76	13	3
Nov-2004	8.3	10.6	9.0	16.65	14	3
Dec-2004	10.4	12.4	10.3	16.37	13	3
Jan-2005	7.9	13.9	11.4	16.17	12	3
Feb-2005	9.4	15.1	12.3	16.03	11	3
Mar-2005	13.4	16.6	13.4	15.88	11	3
Apr-2005	8.6	13.9	11.4	16.17	11	3
May-2005*	26.8*	17.7	14.1	15.78	10*	3
Jun-2005*	18.1*	13.9	11.4	16.17	14*	3
Jul-2005	7.4	14.9	12.1	16.05	14	3
Aug-2005	6.5	13.9	11.4	16.17	12	3
Sep-2005	7.5	13.0	10.8	16.28	11	3
Oct-2005	6.5	11.4	9.6	16.52	13	3
Nov-2005	7.8	9.8	8.4	16.79	14	3
Dec-2005	7.6	9.6	8.2	16.85	14	3
Jan-2006	6.3	11.6	9.7	16.49	13	3
Feb-2006	6.4	11.7	9.8	16.48	13	3
Mar-2006	8.1	13.1	10.8	16.28	12	3

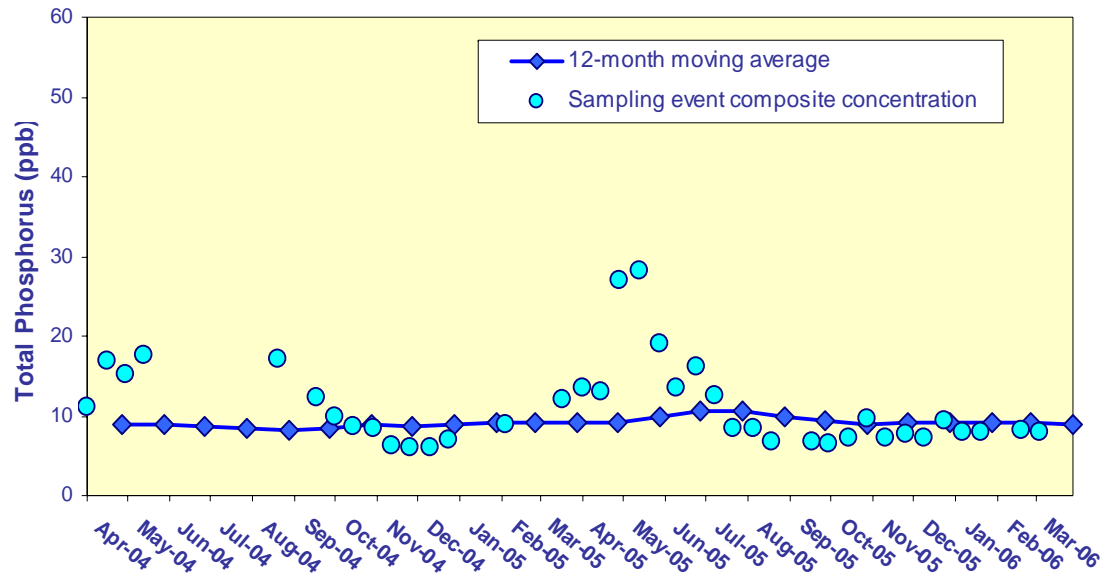
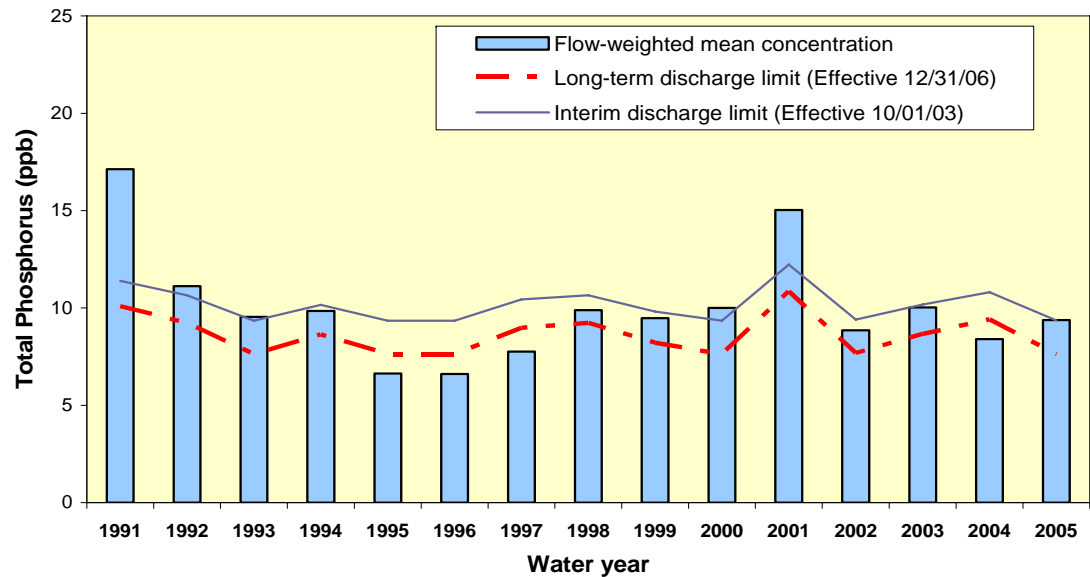
Refuge TP Compliance Tracking for January – May 2006

Month - Year	Geometric Mean Concentration	Interim Level (ppb)	Long Term Level (ppb)	Average Stage (ft NGVD)	Number of TP Samples	Number of Stage Measurements
	(ppb)	Effective 2/1/99	Effective 12/31/06			
Jan-2006	6.3	11.6	9.7	16.49	13	3
Feb-2006	6.4	11.7	9.8	16.48	13	3
Mar-2006	8.1	13.1	10.8	16.28	12	3
Apr-2006*	8.4	14.9	12.2	16.05	12	3
May-2006*	8.2	19.9	15.7	15.60	9	3

* April and May 2006 data are **preliminary** values.

Flow-weighted Mean Concentrations Inflows to Everglades National Park through Shark River Slough

12-month FWMC at the end of each water year compared to the TP interim and long-term limits.



12-month FWMC at the end of each month and the composite TP concentration for each sampling event.

**Shark River Slough
TP Concentration
Compliance Tracking**

12-Month Period Ending On	Total Period Flow (Kac-ft)	Flow Weighted Mean Total Phosphorus (ppb)	Interim Limit (ppb)	Long Term Limit (ppb)	Percent of Sampling Events Greater than 10 ppb (%)	
			Effective 10/1/2003	Effective 12/31/2006	Guideline	Observed
30-Apr-04	1012.9	9.0	9.5	7.9	41.2	40.7
31-May-04	980.2	9.0	9.7	8.0	41.9	40.7
30-Jun-04	942.5	8.7	9.8	8.2	42.8	36.0
31-Jul-04	832.0	8.4	10.2	8.8	45.5	27.3
31-Aug-04	733.0	8.2	10.7	9.3	48.2	28.6
30-Sep-04	704.4	8.4	10.8	9.4	49.0	35.0
31-Oct-04	727.8	8.9	10.7	9.3	48.3	35.0
30-Nov-04	760.3	8.7	10.6	9.1	47.4	33.3
31-Dec-04	738.5	9.0	10.7	9.2	48.0	35.0
31-Jan-05	717.3	9.0	10.7	9.3	48.6	38.9
28-Feb-05	709.8	9.1	10.8	9.4	48.8	37.5
31-Mar-05	698.3	9.2	10.8	9.4	49.2	46.7
30-Apr-05	732.6	9.1	10.7	9.3	48.2	46.7
31-May-05	767.1	10.0	10.5	9.1	47.3	50.0
30-Jun-05	836.0	10.5	10.2	8.7	45.4	55.6
31-Jul-05	1054.7	10.5	9.4	7.7	40.3	55.0
31-Aug-05	1269.2	9.8	9.4	7.6	40.1	47.6
30-Sep-05	1345.9	9.4	9.4	7.6	40.1	42.9
31-Oct-05	1338.1	9.0	9.4	7.6	40.1	40.9
30-Nov-05	1381.7	9.1	9.4	7.6	40.1	42.9
31-Dec-05	1447.6	9.1	9.4	7.6	40.1	42.9
31-Jan-06	1507.7	9.0	9.4	7.6	40.1	39.1
28-Feb-06	1497.6*	9.0	9.4	7.6	40.1	39.1
31-Mar-06	1481.0*	9.0	9.4	7.6	40.1	34.8

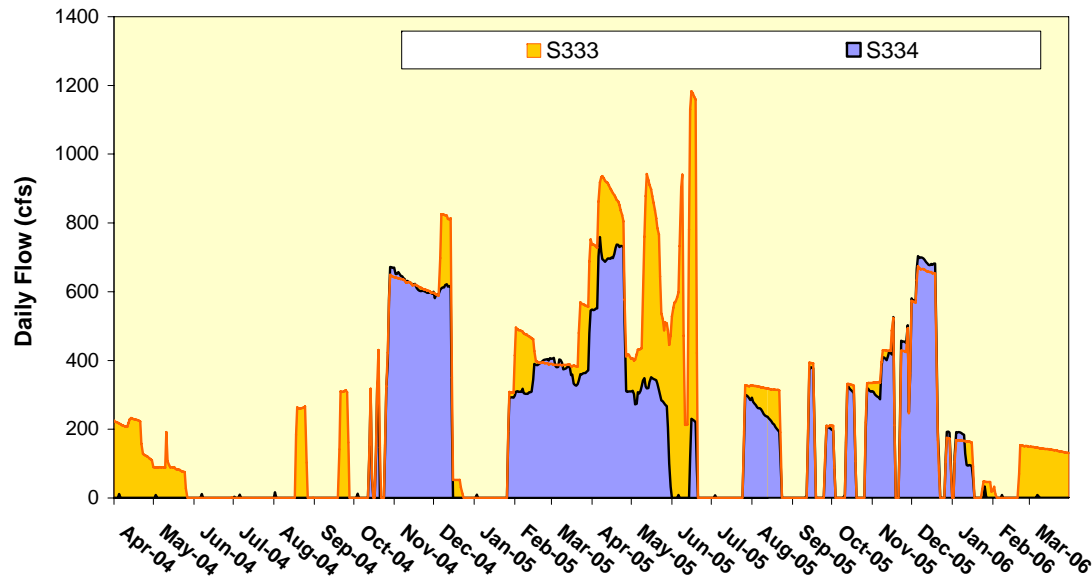
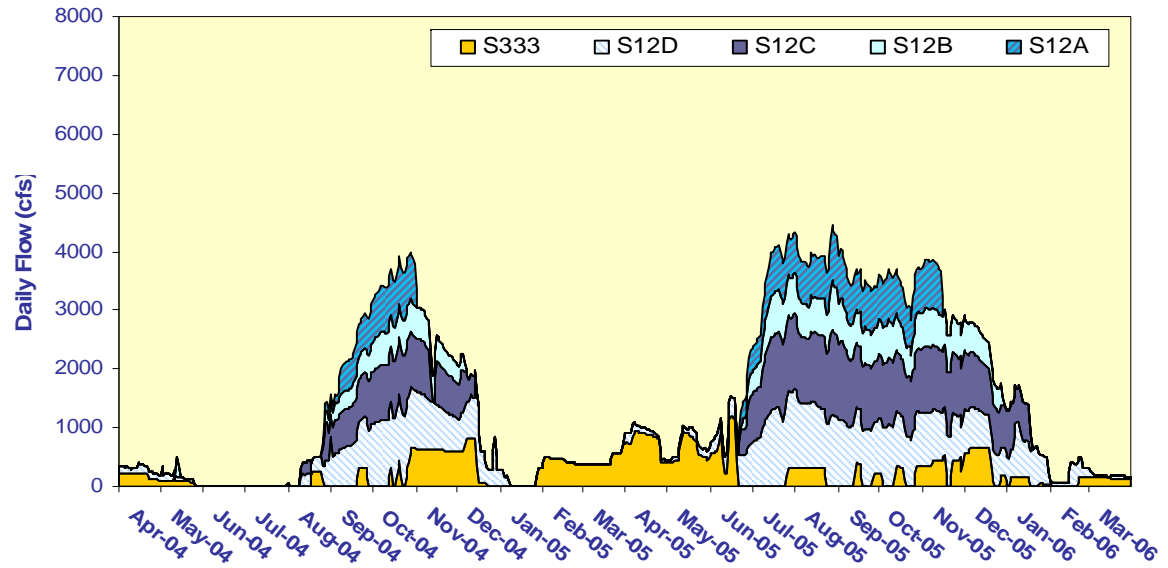
Shark River Slough TP Concentration Compliance Tracking for January – March 2006

12-Month Period Ending On	Total Period Flow (Kac-ft)	Flow Weighted Mean Total Phosphorus (ppb)	Interim Limit (ppb)	Long Term Limit (ppb)	Percent of Sampling Events Greater than 10 ppb	
			Effective 10/1/2003	Effective 12/31/2006	(%)	
					Guideline	Observed
31-Jan-06	1507.7	9.0	9.4	7.6	40.1	39.1
28-Feb-06	1497.6*	9.0	9.4	7.6	40.1	39.1
31-Mar-06	1481.0*	9.0	9.4	7.6	40.1	34.8

* 1.82 kac-ft in February 2006 at S355A and S355B are included.

Shark River Slough – Daily Flows and Sampling Event FWMC

Daily flows into Shark River Slough by structure

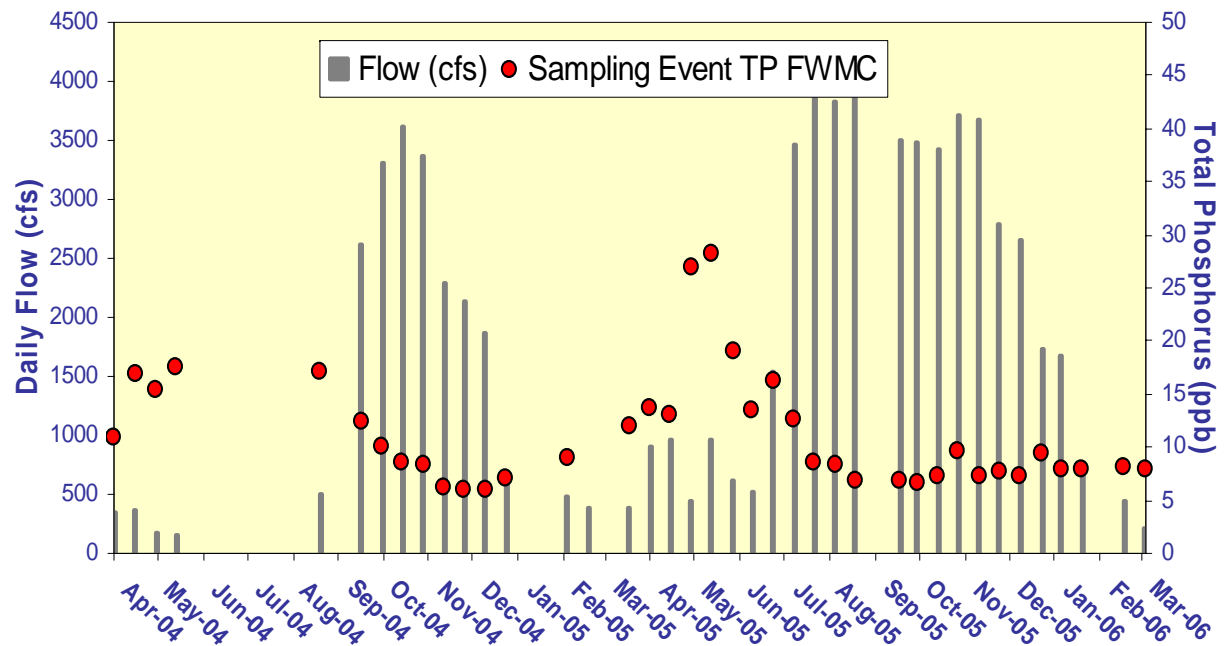


Daily flow at S333 and S334

Shark River Slough

Daily Flows and Sampling Event FWMC

Daily flow at Shark River Slough structures and the corresponding TP FWMCs for individual sampling events.



Flows at S355A and S355B in February 3-20, 2006

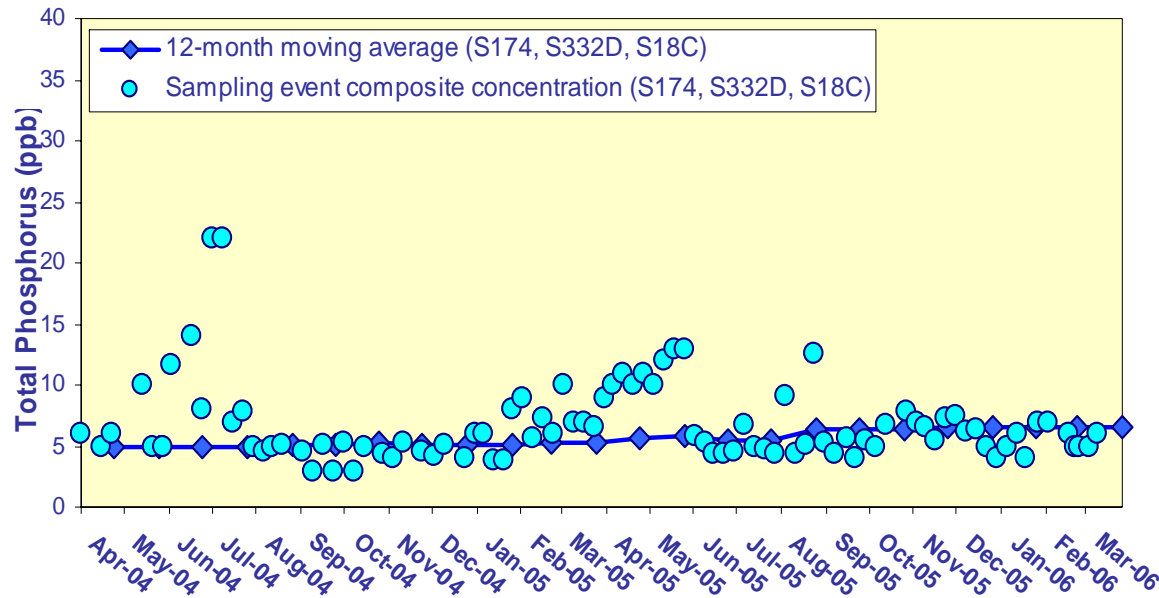
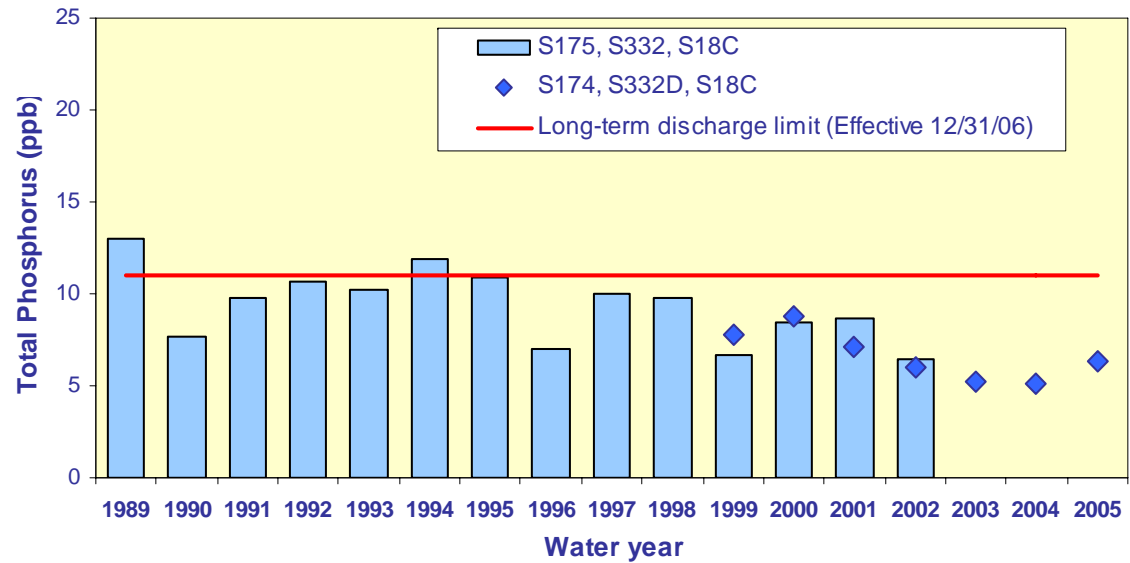
Site	Daily Mean Flow (cfs)	Total Flow (kac-ft)	TP Concentration* (mg/L)	TP Loads (kg)
S355A	32	1.14	0.007	9.9
S355B	19	0.68	0.012	10.0
Total	51	1.82	0.009**	19.9

* TP samples taken on February 16, 2006.

** Flow-Weighted Mean Concentration

TP flow-weighted mean concentrations in inflows to the ENP through Taylor Slough and the Coastal Basins

The 12-month FWMC at the end of each water year compared to the 11 ppb long-term total phosphorus limit.



The 12-month FWMC at the end of each month and the composite TP concentration for each sampling event.

Taylor Slough and the Coastal Basins

TP Concentration

Compliance Tracking

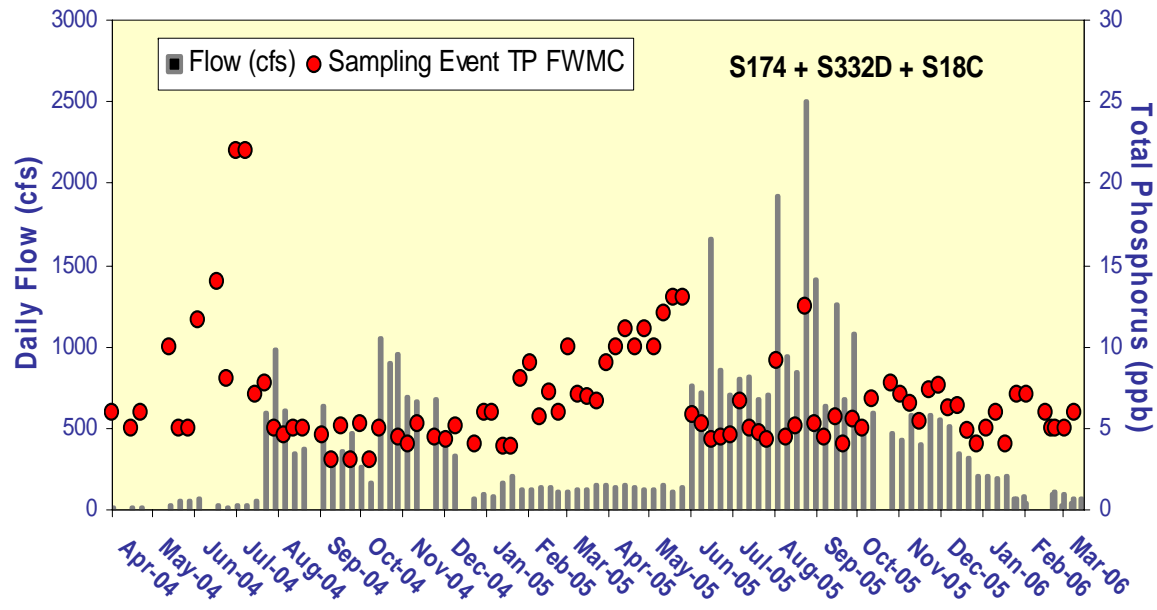
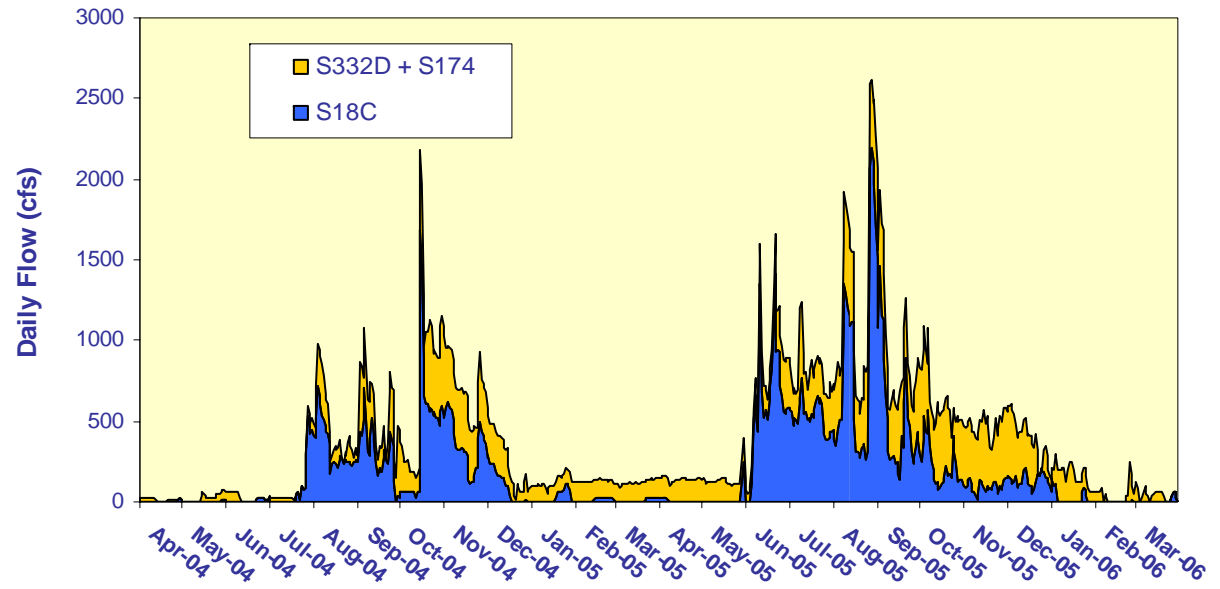
12-Month Period Ending On	Total Period Flow (Kac-ft)	Flow Weighted Mean Total Phosphorus (ppb)	Long Term Limit (Effective 12/31/06) (ppb)	Percent of Sampling Events Greater than 10 ppb	
				(%)	
				Guideline	Observed
30-Apr-04	292.3	5.0	11.0	53.1	0.0
31-May-04	274.8	4.9	11.0	53.1	2.2
30-Jun-04	238.0	4.9	11.0	53.1	6.7
31-Jul-04	224.3	5.0	11.0	53.1	11.4
31-Aug-04	202.7	5.1	11.0	53.1	11.4
30-Sep-04	192.6	5.2	11.0	53.1	11.4
31-Oct-04	210.1	5.3	11.0	53.1	11.9
30-Nov-04	206.7	5.1	11.0	53.1	11.9
31-Dec-04	193.0	5.2	11.0	53.1	12.5
31-Jan-05	194.4	5.1	11.0	53.1	12.5
28-Feb-05	194.7	5.2	11.0	53.1	11.9
31-Mar-05	199.6	5.3	11.0	53.1	11.4
30-Apr-05	207.2	5.6	11.0	53.1	13.3
31-May-05	214.1	5.9	11.0	53.1	18.8
30-Jun-05	261.0	5.5	11.0	53.1	14.6
31-Jul-05	304.6	5.4	11.0	53.1	10.4
31-Aug-05	357.1	6.4	11.0	53.1	12.2
30-Sep-05	380.0	6.3	11.0	53.1	12.2
31-Oct-05	373.4	6.3	11.0	53.1	12.2
30-Nov-05	358.6	6.6	11.0	53.1	12.0
31-Dec-05	366.9	6.6	11.0	53.1	11.8
31-Jan-06	369.5	6.6	11.0	53.1	11.8
28-Feb-06	364.6	6.6	11.0	53.1	11.8
31-Mar-06	359.7	6.6	11.0	53.1	11.8

Taylor Slough and the Coastal Basins TP Concentration Compliance Tracking for January – March 2006

12-Month Period Ending On	Total Period Flow (Kac-ft)	Flow Weighted Mean Total Phosphorus (ppb)	Long Term Limit (Effective 12/31/06) (ppb)	Percent of Sampling Events Greater than 10 ppb (%)	
				Guideline	Observed
31-Jan-06	369.5	6.6	11.0	53.1	11.8
28-Feb-06	364.6	6.6	11.0	53.1	11.8
31-Mar-06	359.7	6.6	11.0	53.1	11.8

Taylor Slough and S18C – Daily Flows and Sampling Event FWMC

Daily flows into Everglades National Park through Taylor Slough and S18C.



Daily flows at Taylor Slough structures and S18C and the corresponding TP for individual sampling events.