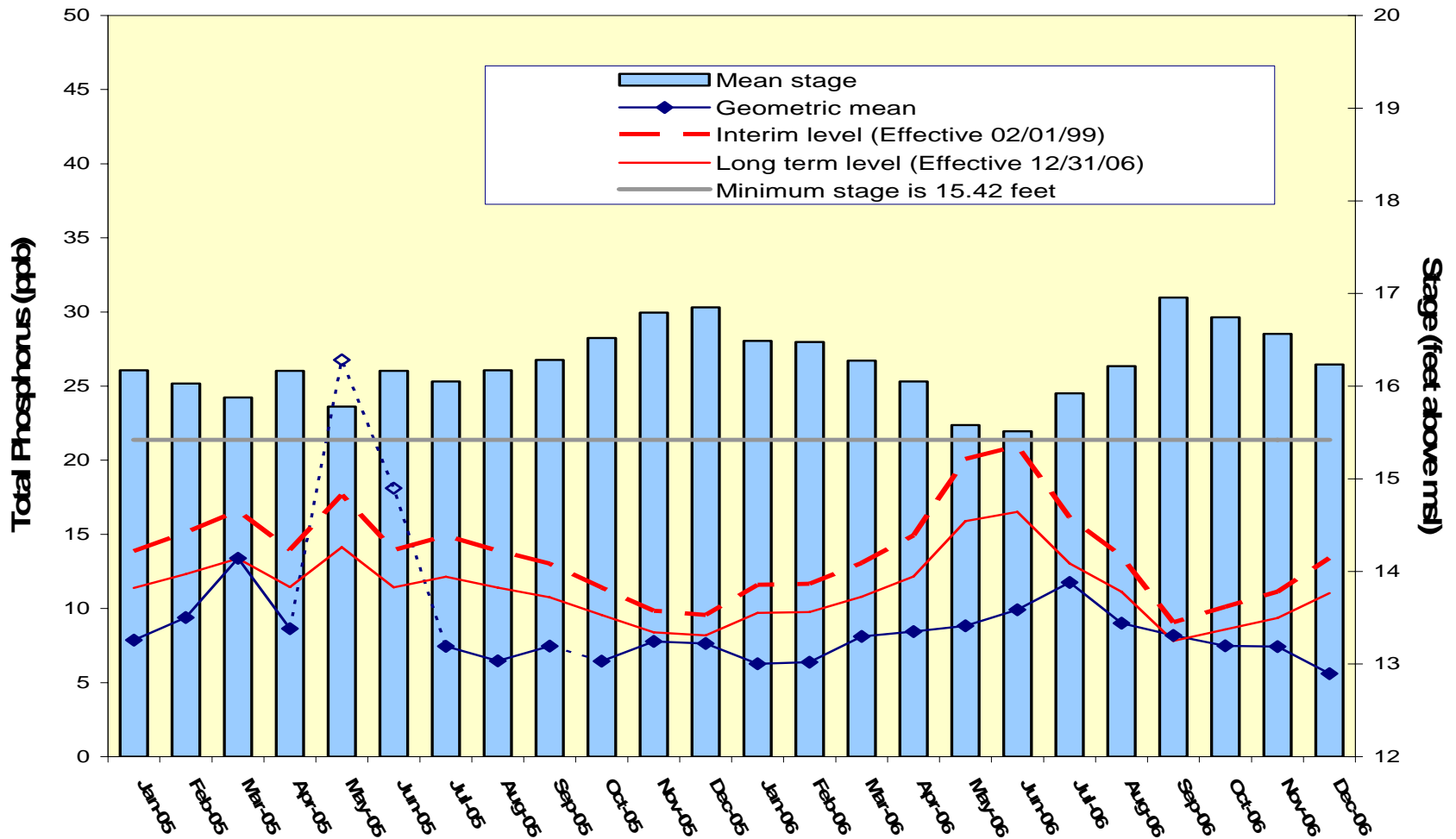


Settlement Agreement

October - December 2006

Prepared for the
Technical Oversight Committee
February 27, 2007

A.R.M Loxahatchee National Wildlife Refuge Monthly Total Phosphorus Geometric Mean Concentrations



Loxahatchee National Wildlife Refuge

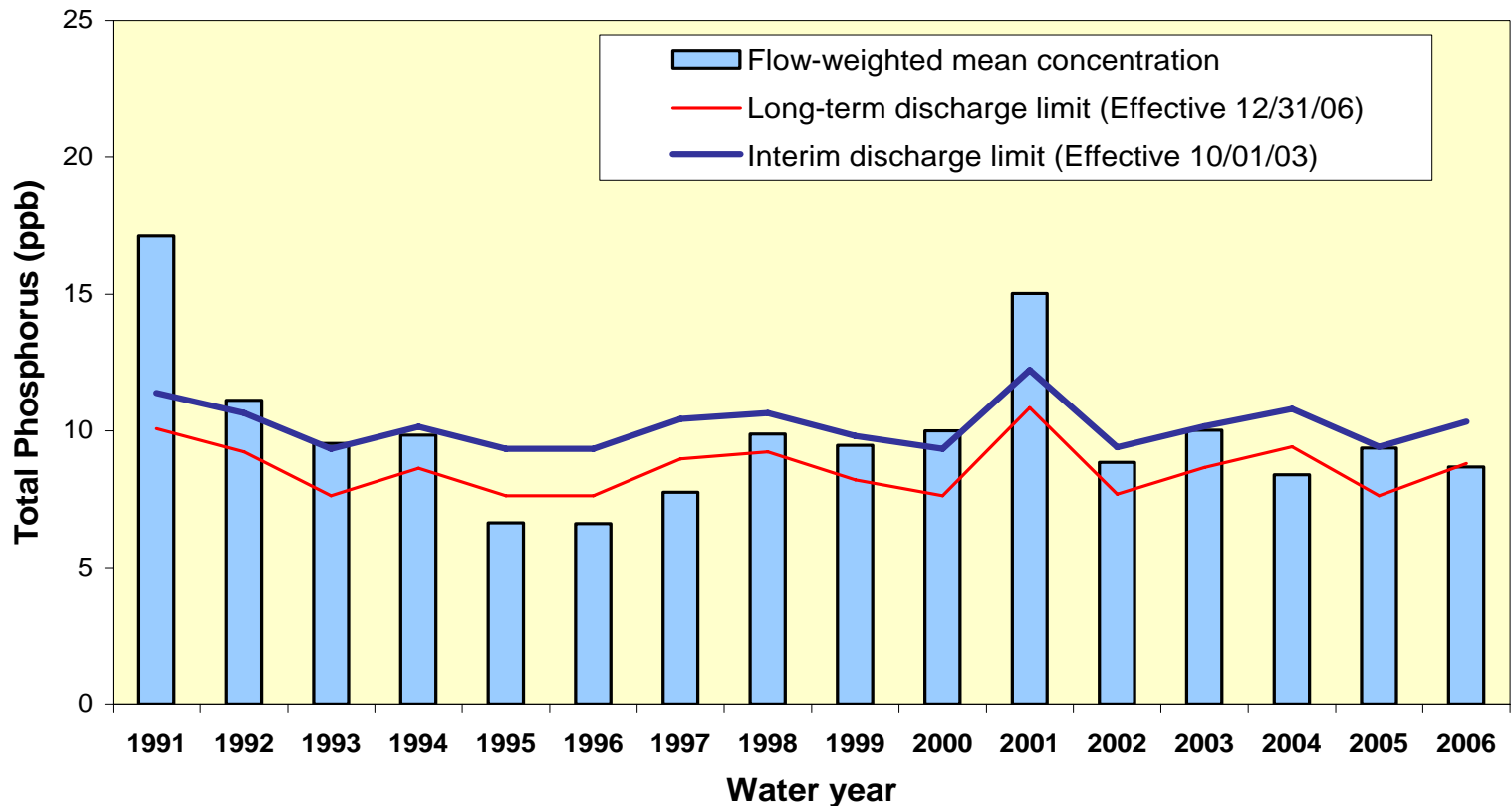
Total Phosphorus Compliance Tracking

Month - Year	Geometric Mean Concentration	Interim Level (ppb)	Long Term Level (ppb)	Average Stage ^a	Number of TP Samples	Number of Stage Measurements
	(ppb)	Effective 2/1/99	Effective 12/31/06	(ft NGVD)		
Jan-2005	7.9	13.9	11.4	16.17	12	3
Feb-2005	9.4	15.1	12.3	16.03	11	3
Mar-2005	13.4	16.6	13.4	15.88	11	3
Apr-2005	8.6	13.9	11.4	16.17	11	3
May-2005 ^b	(26.8)	17.7	14.1	15.78	(10)	3
Jun-2005 ^b	(18.1)	13.9	11.4	16.17	(14)	3
Jul-2005	7.4	14.9	12.1	16.05	14	3
Aug-2005	6.5	13.9	11.4	16.17	12	3
Sep-2005	7.5	13.0	10.8	16.28	11	3
Oct-2005	6.5	11.4	9.6	16.52	13	3
Nov-2005	7.8	9.8	8.4	16.79	14	3
Dec-2005	7.6	9.6	8.2	16.85	14	3
Jan-2006	6.3	11.6	9.7	16.49	13	3
Feb-2006	6.4	11.7	9.8	16.48	13	3
Mar-2006	8.1	13.1	10.8	16.28	12	3
Apr-2006	8.4	14.9	12.2	16.05	12	3
May-2006	8.8	20.1	15.9	15.58	10	3
Jun-2006	9.9	21.0	16.5	15.51	5	3
Jul-2006	11.7	16.1	13.0	15.92	9	3
Aug-2006	9.0	13.5	11.1	16.22	11	3
Sep-2006	8.2	9.1	7.8	16.96	14	3
Oct-2006	7.5	10.1	8.6	16.74	14	3
Nov-2006	7.4	11.1	9.4	16.56	14	3
Dec-2006	5.6	13.4	11.0	16.23	11	3

Refuge TP Compliance Tracking for October 2006 – February 2007

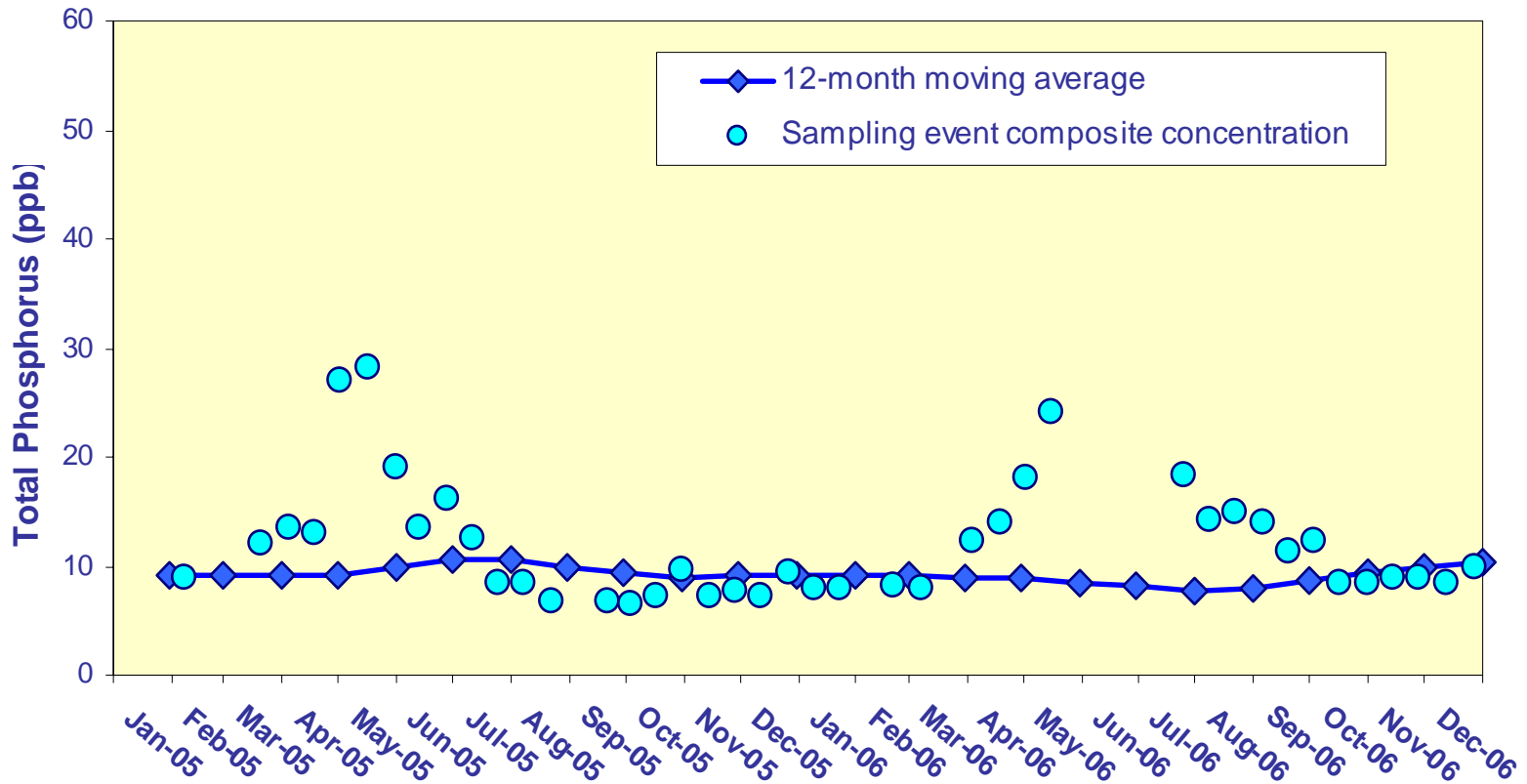
Month - Year	Geometric Mean Concentration	Interim Level (ppb)	Long Term Level (ppb)	Average Stage (ft NGVD)	Number of TP Samples	Number of Stage Measurements
	(ppb)	Effective 2/1/99	Effective 12/31/06			
Oct-2006	7.5	10.1	8.6	16.74	14	3
Nov-2006	7.4	11.1	9.4	16.56	14	3
Dec-2006	5.6	13.4	11.0	16.23	11	3
Jan-2007*	6.9	11.1	9.3	16.57	14	3
Feb-2007*	6.2	12.6	10.4	16.34	13	3

Flow-weighted Mean Concentrations Inflows to ENP through Shark River Slough



12-month FWMC at the end of each water year compared to the TP interim and long-term limits.

Flow-Weighted Mean Concentrations Inflows to ENP through Shark River Slough



12-month FWMC at the end of each month and the composite TP concentration for each sampling event.

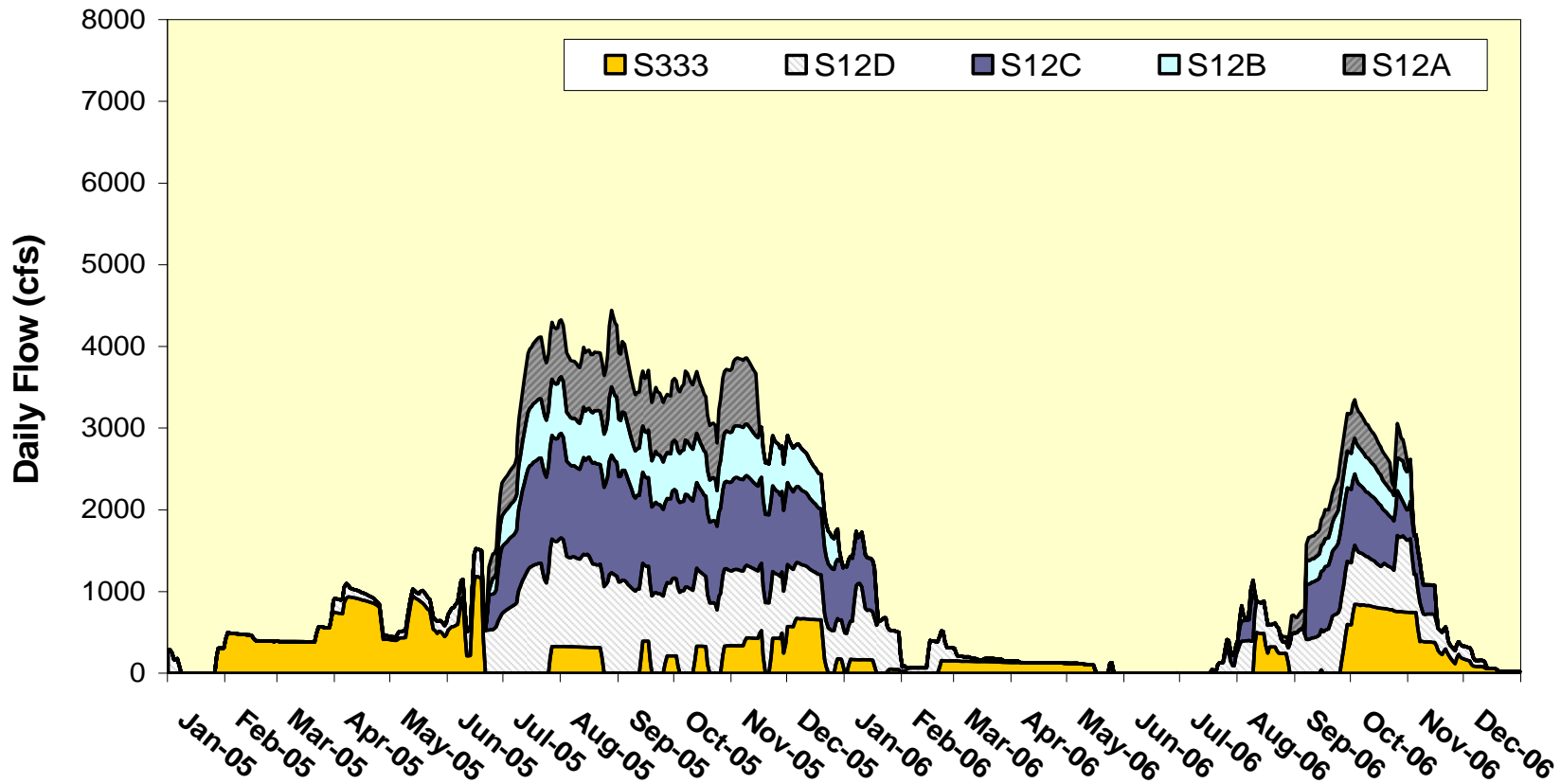
Shark River Slough TP Concentration Compliance Tracking

12-Month Period Ending On	Total Period Flow (kac-ft)	Flow Weighted Mean Total Phosphorus (ppb)	Interim Limit (ppb)	Long Term Limit (ppb)	Percent of Sampling Events Greater than 10 ppb (%)	
			Effective 10/1/2003	Effective 12/31/2006	Guideline	Observed
31-Jan-05	717.3	9.0	10.7	9.3	48.6	38.9
28-Feb-05	709.8	9.1	10.8	9.4	48.8	37.5
31-Mar-05	698.3	9.2	10.8	9.4	49.2	46.7
30-Apr-05	732.6	9.1	10.7	9.3	48.2	46.7
31-May-05	767.1	10.0	10.5	9.1	47.3	50.0
30-Jun-05	836.0	10.5	10.2	8.7	45.4	55.6
31-Jul-05	1054.7	10.5	9.4	7.7	40.3	55.0
31-Aug-05	1269.2	9.8	9.4	7.6	40.1	47.6
30-Sep-05	1345.9	9.4	9.4	7.6	40.1	42.9
31-Oct-05	1338.1	9.0	9.4	7.6	40.1	40.9
30-Nov-05	1381.7	9.1	9.4	7.6	40.1	42.9
31-Dec-05	1447.6	9.1	9.4	7.6	40.1	42.9
31-Jan-06	1507.7	9.0	9.4	7.6	40.1	39.1
28-Feb-06 ^a	1497.6	9.0	9.4	7.6	40.1	39.1
31-Mar-06 ^a	1481.0	9.0	9.4	7.6	40.1	34.8
30-Apr-06 ^a	1436.0	9.0	9.4	7.6	40.1	34.8
31-May-06 ^a	1395.5	8.5	9.4	7.6	40.1	31.8
30-Jun-06 ^a	1326.6	8.2	9.4	7.6	40.1	25.0
31-Jul-06 ^a	1113.3	7.7	9.4	7.6	40.1	26.3
31-Aug-06 ^b	914.7	8.1	9.9	8.3	43.5	36.8
30-Sep-06 ^b	814.0	8.7	10.3	8.8	46.0	45.0
31-Oct-06 ^b	779.6	9.5	10.5	9.0	46.9	50.0
30-Nov-06 ^b	642.7	10.0	11.1	9.7	50.8	50.0
31-Dec-06 ^b	507.9	10.3	11.8	10.5	55.0	50.0

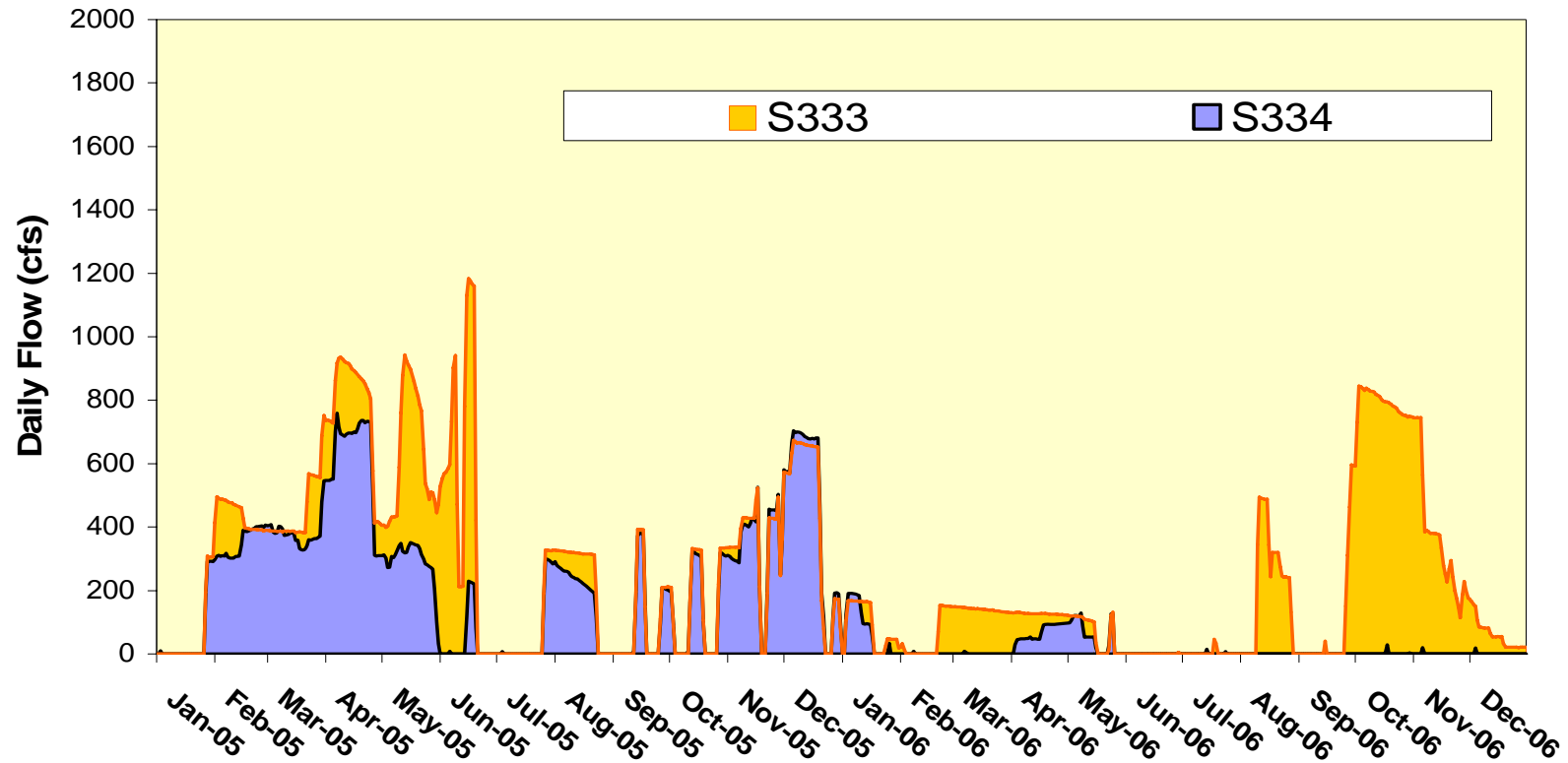
Shark River Slough TP Concentration Compliance Tracking for October – December 2006

12-Month Period Ending On	Total Period Flow (kac-ft)	Flow Weighted Mean Total Phosphorus (ppb)	Interim Limit (ppb)	Long Term Limit (ppb)	Percent of Sampling Events Greater than 10 ppb	
			Effective 10/1/2003	Effective 12/31/2006	(%)	
					Guideline	Observed
31-Oct-06	779.6	9.5	10.5	9.0	46.9	50.0
30-Nov-06	642.7	10.0	11.1	9.7	50.8	50.0
31-Dec-06	507.9	10.3	11.8	10.5	55.0	50.0

Shark River Slough Daily Flows by Structure

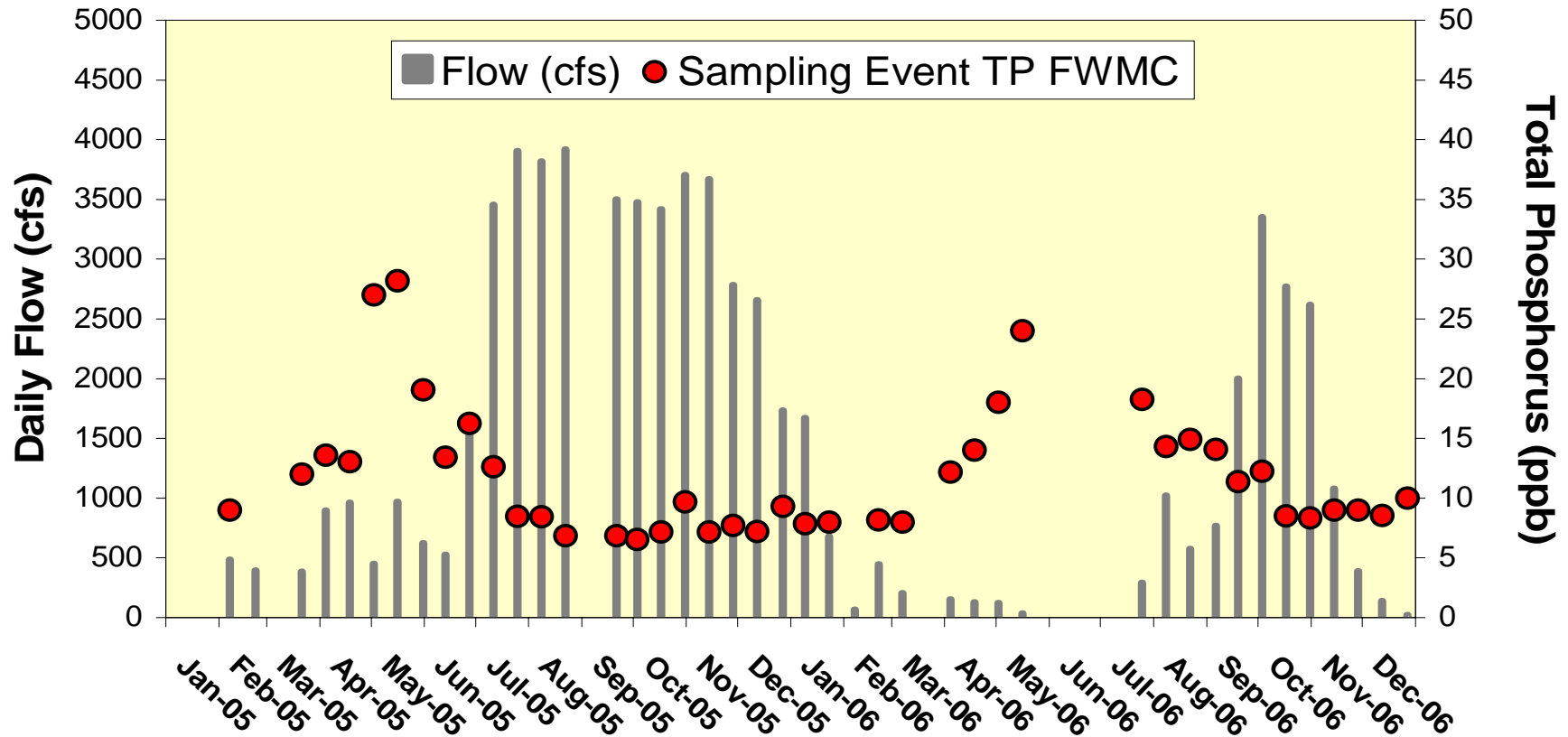


Daily flow at S333 and S334



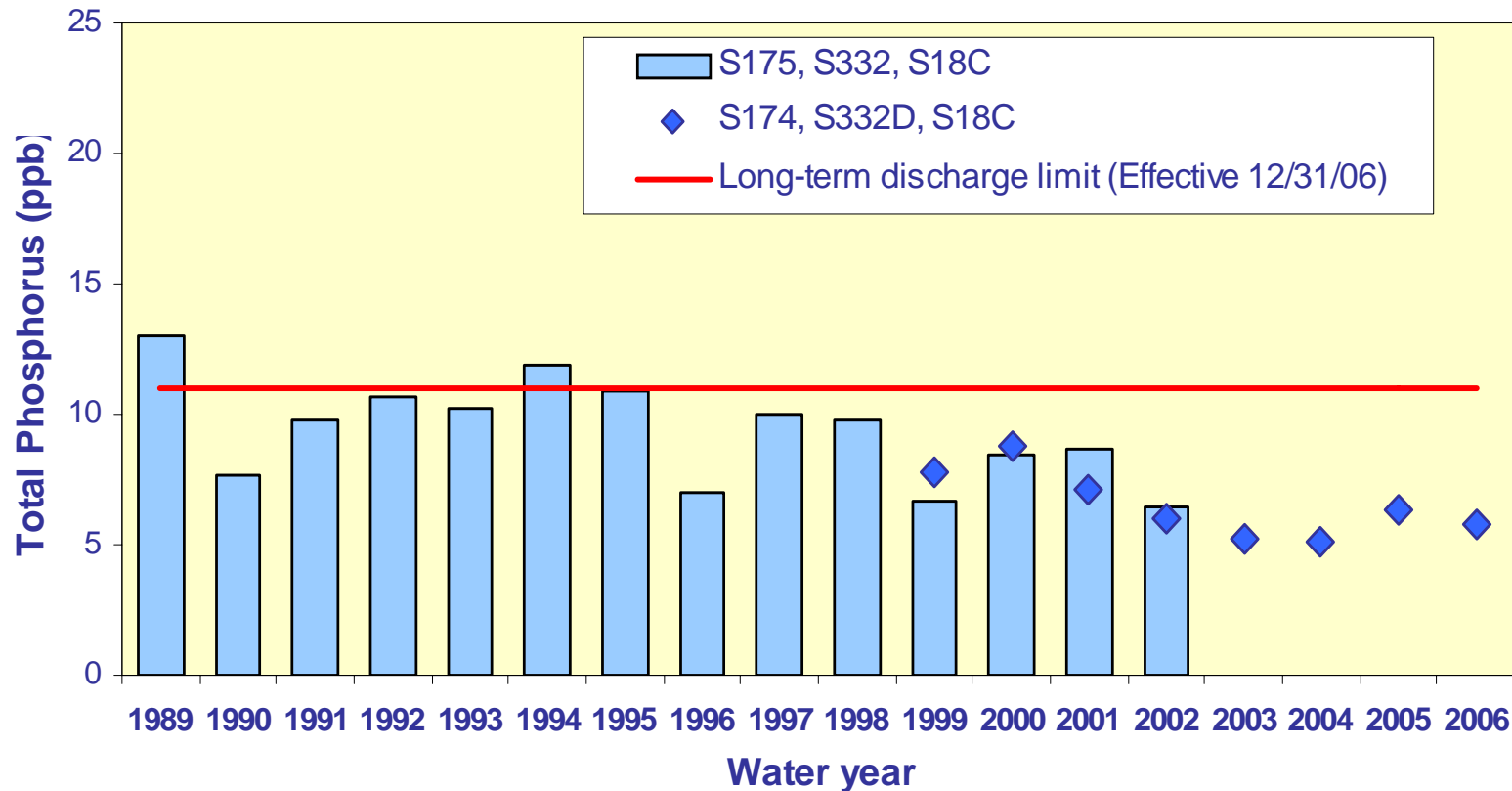
Shark River Slough

Sampling Event Daily Flows and FWMC



Daily flow at Shark River Slough structures and the corresponding TP FWMCs for individual sampling events.

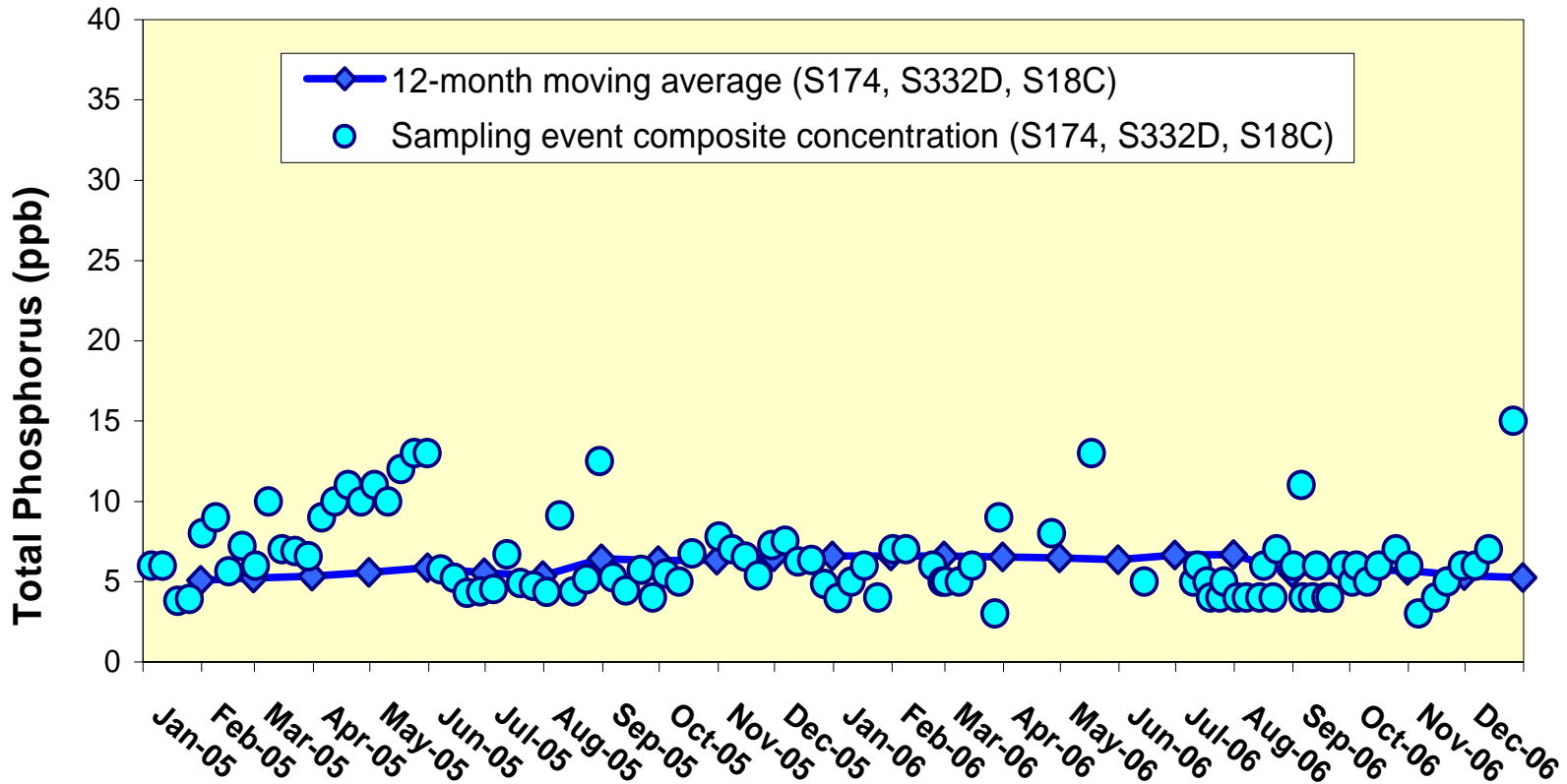
TP Flow-Weighted Mean Concentrations Inflows to the ENP through Taylor Slough and the Coastal Basins



The 12-month FWMC at the end of each water year compared to the 11 ppb long-term total phosphorus limit.

TP Flow-Weighted Mean Concentrations

Inflows to the ENP through Taylor Slough and the Coastal Basins



The 12-month FWMC at the end of each month and the composite TP concentration for each sampling event.

Taylor Slough and the Coastal Basins

TP Concentration

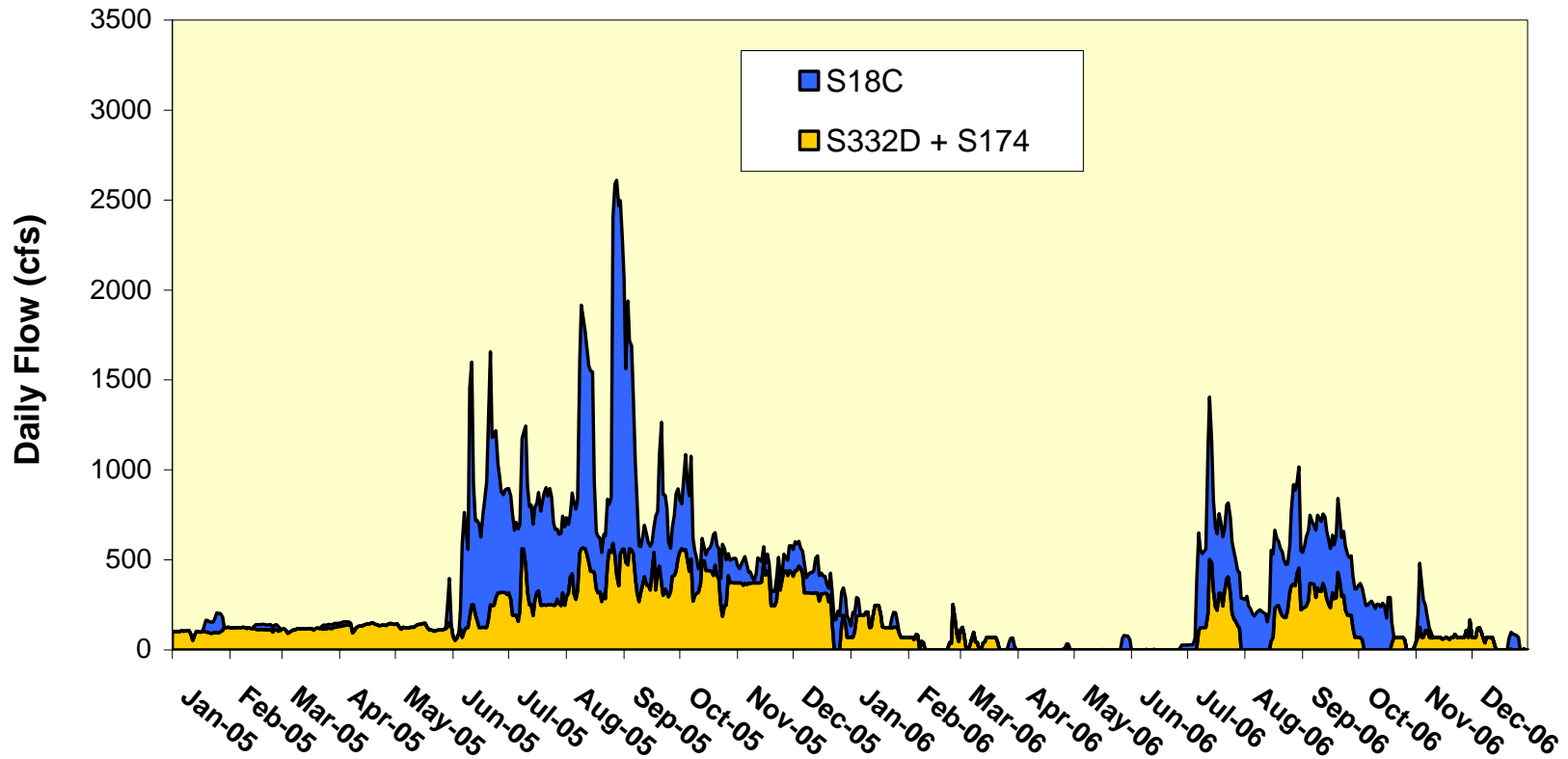
Compliance Tracking

12-Month Period Ending On	Total Period Flow (kac-ft)	Flow Weighted Mean Total Phosphorus (ppb)	Long Term Limit (Effective 12/31/06) (ppb)	Percent of Sampling Events Greater than 10 ppb	
				(%)	
				Guideline	Observed
31-Jan-05	194.4	5.1	11.0	53.1	12.5
28-Feb-05	194.7	5.2	11.0	53.1	11.9
31-Mar-05	199.6	5.3	11.0	53.1	11.4
30-Apr-05	207.2	5.6	11.0	53.1	13.3
31-May-05	214.1	5.9	11.0	53.1	18.8
30-Jun-05	261.0	5.5	11.0	53.1	14.6
31-Jul-05	304.6	5.4	11.0	53.1	10.4
31-Aug-05	357.1	6.4	11.0	53.1	12.2
30-Sep-05	380.0	6.3	11.0	53.1	12.2
31-Oct-05	373.4	6.3	11.0	53.1	12.2
30-Nov-05	358.6	6.6	11.0	53.1	12.0
31-Dec-05	366.9	6.6	11.0	53.1	11.8
31-Jan-06	369.5	6.6	11.0	53.1	11.8
28-Feb-06	364.6	6.6	11.0	53.1	11.8
31-Mar-06	359.7	6.6	11.0	53.1	11.8
30-Apr-06	351.5	6.5	11.0	53.1	10.4
31-May-06	343.7	6.4	11.0	53.1	4.5
30-Jun-06	295.5	6.7	11.0	53.1	4.9
31-Jul-06	280.0	6.7	11.0	53.1	4.7
31-Aug-06	227.0	5.6	11.0	53.1	2.3
30-Sep-06	207.4	5.7	11.0	53.1	4.2
31-Oct-06	179.5	5.7	11.0	53.1	4.0
30-Nov-06	158.8	5.4	11.0	53.1	4.0
31-Dec-06	137.4	5.3	11.0	53.1	6.1

Taylor Slough and the Coastal Basins TP Concentration Compliance Tracking for October – December 2006

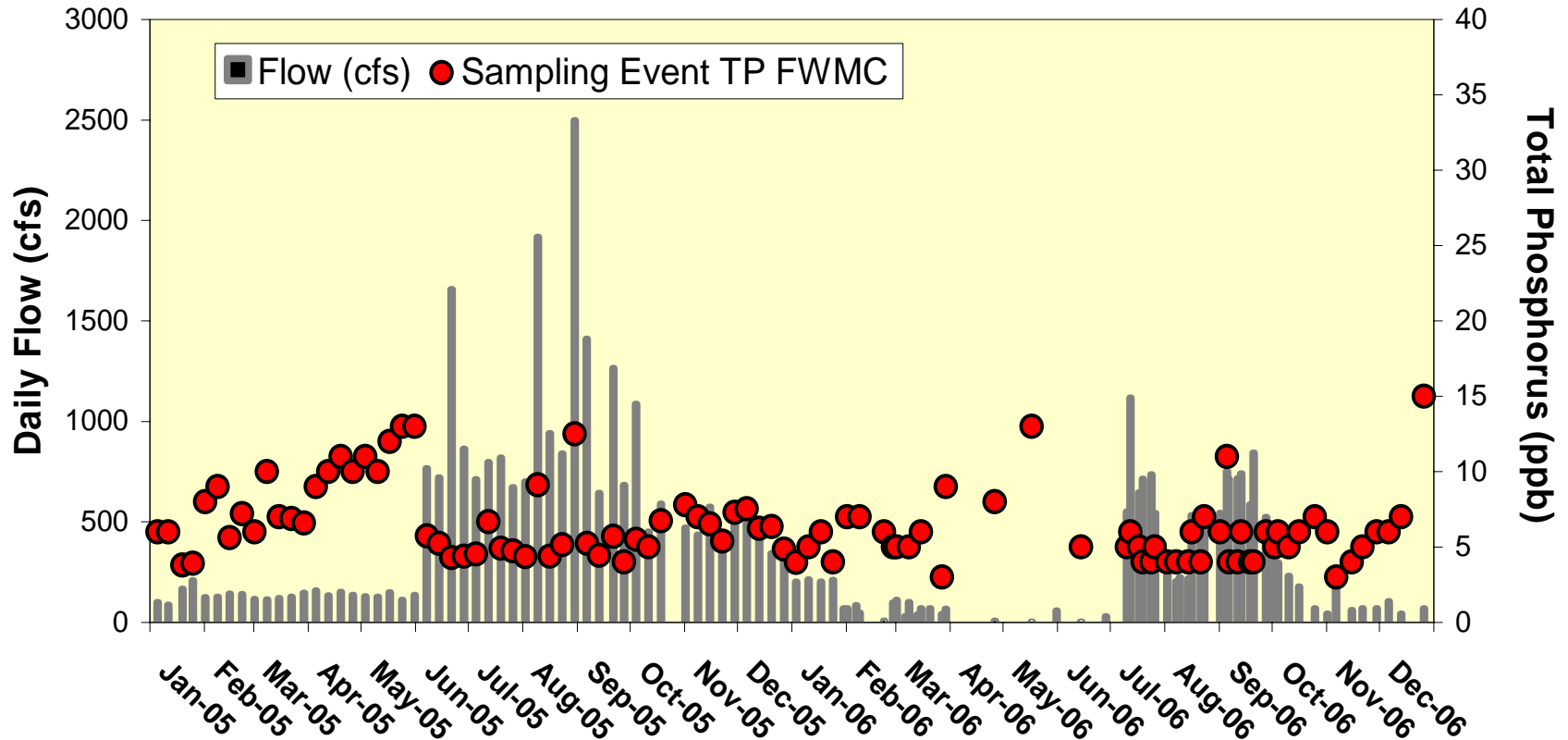
12-Month Period Ending On	Total Period Flow (Kac-ft)	Flow Weighted Mean Total Phosphorus (ppb)	Long Term Limit (Effective 12/31/06) (ppb)	Percent of Sampling Events Greater than 10 ppb (%)	
				Guideline	Observed
31-Oct-06	179.5	5.7	11.0	53.1	4.0
30-Nov-06	158.8	5.4	11.0	53.1	4.0
31-Dec-06	137.4	5.3	11.0	53.1	6.1

Taylor Slough and S18C Daily Flows



Daily flows into Everglades National Park through Taylor Slough and S18C.

Taylor Slough and S18C Sampling Event Flows and FWMC



Daily flows at Taylor Slough structures and S18C and the corresponding TP for individual sampling events.