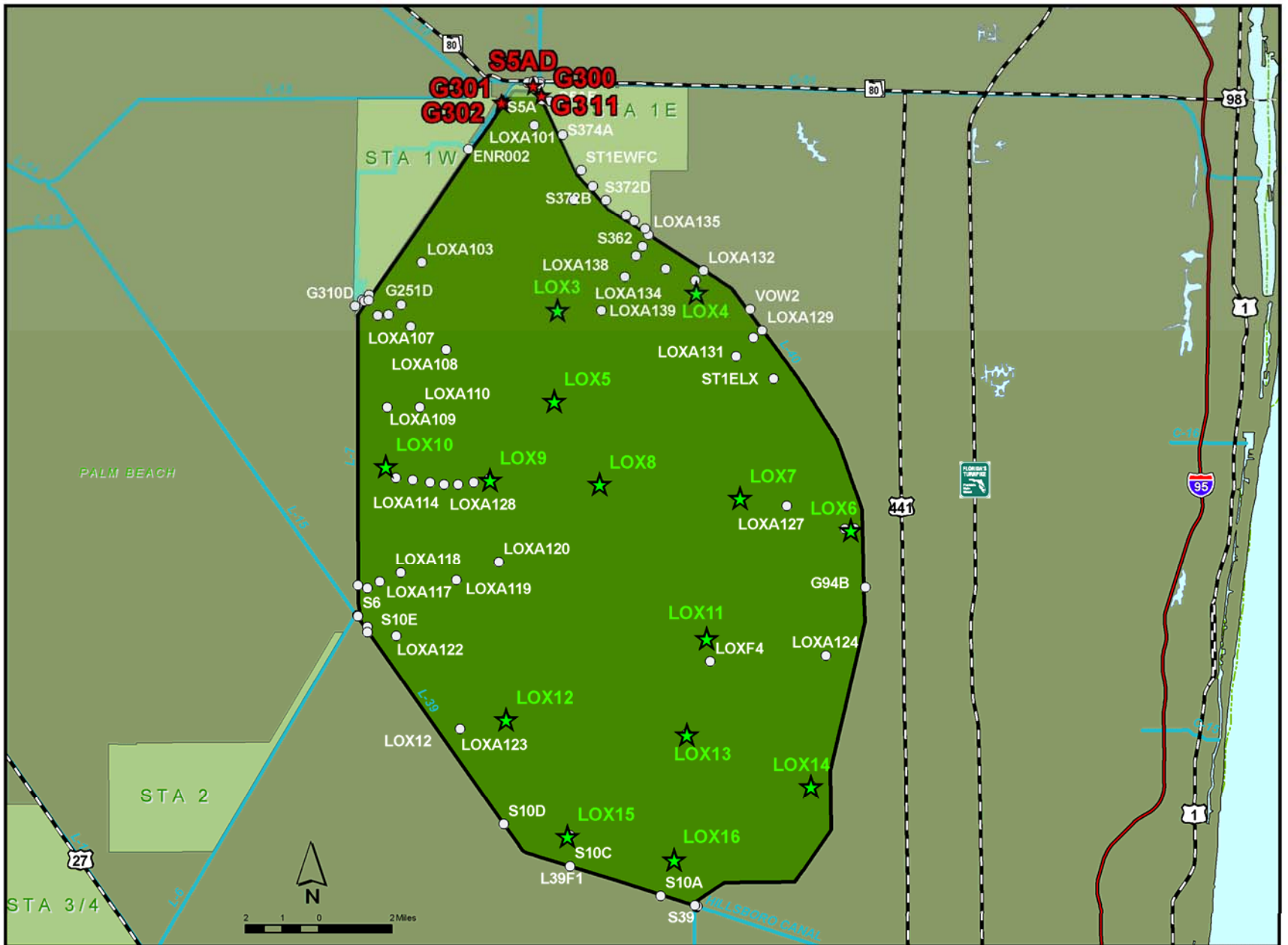


*Proposed Elimination  
of Monitoring  
at S5A-D*

Juli LaRock, SFWMD &  
Mike Waldon, USFWS

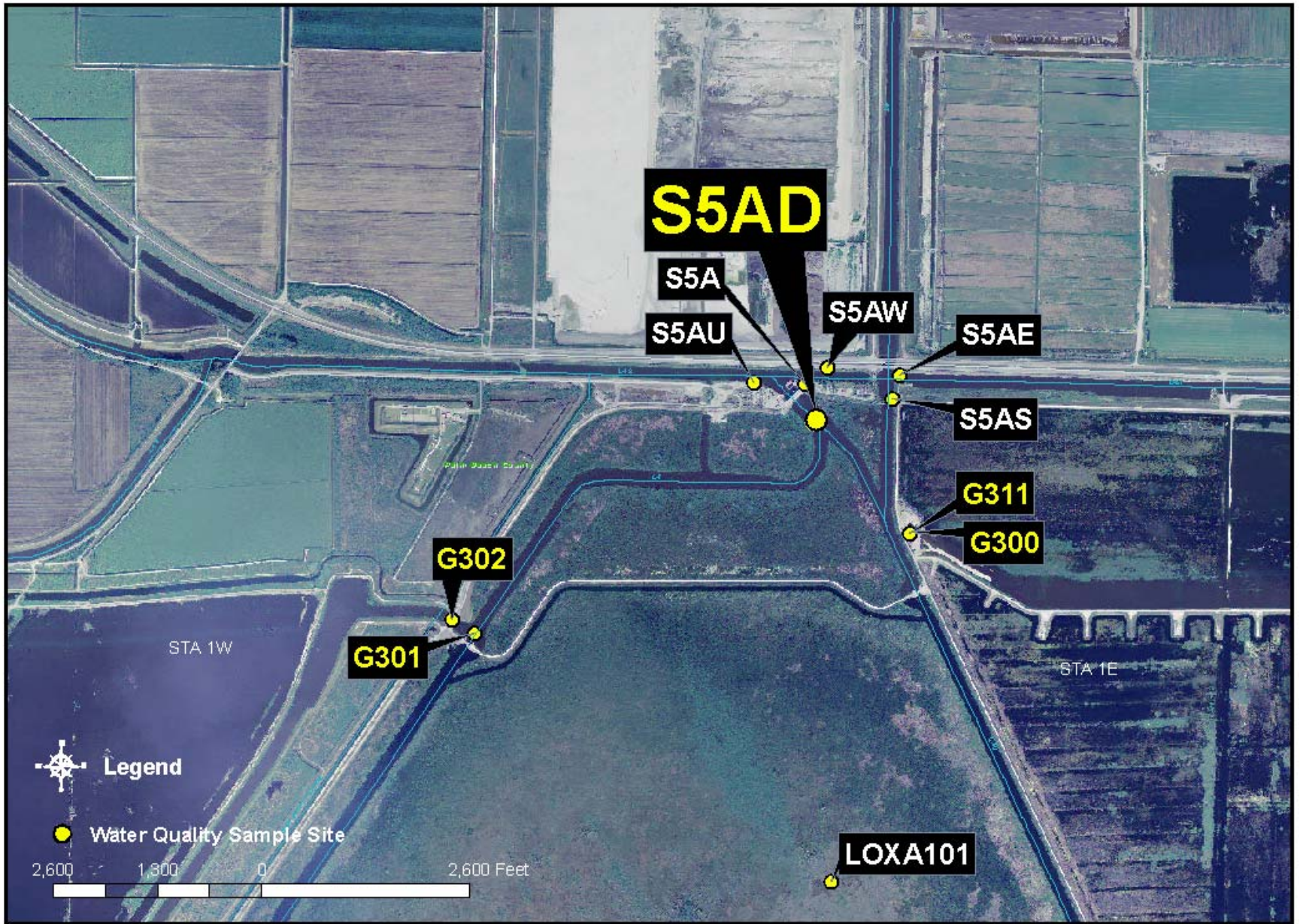
For TOC

November 14, 2006



**Water Conservation Area 1,  
Loxahatchee Water Quality Monitoring Locations**





**Water Conservation Area 1**  
**Water Quality Monitoring Locations Surrounding Monitoring Station S5AD**

# *Parameters*

- At all 5 structures: Alk, NH<sub>4</sub>, Ca, Cl, DO, TKN, NO<sub>x</sub>, pH, TDPO<sub>4</sub>, OPO<sub>4</sub>, TPO<sub>4</sub>, Conductivity, Temp
- At G300/G302/G302/G311: TSS
- At S5A-D only: APA, DOC, TOC, color, hardness, Total Fe, Mg, NO<sub>2</sub>, NO<sub>3</sub>, K, Silica, Na, SO<sub>4</sub>, TDS, Turbidity

# *Conclusion*

- **S5A-D is not statistically different than G300.**



# *Recommendation*

- **Discontinue Monitoring at S5A-D**
- **Add SO4 and Turbidity to G300 collection**