



# Projects Update



Quarterly Meeting of the  
Technical Oversight Committee

May 20, 2008

Tracey Piccone, P.E.

Jeff Kivett, P.E.

South Florida Water Management District

**Everglades Protection Area Tributary Basins  
Long-Term Plan for Achieving Water Quality Goals**



# EAA Reservoir A-1



- GMP1 - Construction is completed (\$10M under budget and savings to be applied to GMP3 Revision 1)
- GMP2 – Rock processing plant in production nearing initial storage capacity.
- GMP3 – Remainder of seepage canal 100% complete.

**Everglades Protection Area Tributary Basins  
Long-Term Plan for Achieving Water Quality Goals**



# EAA Reservoir A-1



## Rock Processing GMP2



**Everglades Protection Area Tributary Basins  
Long-Term Plan for Achieving Water Quality Goals**



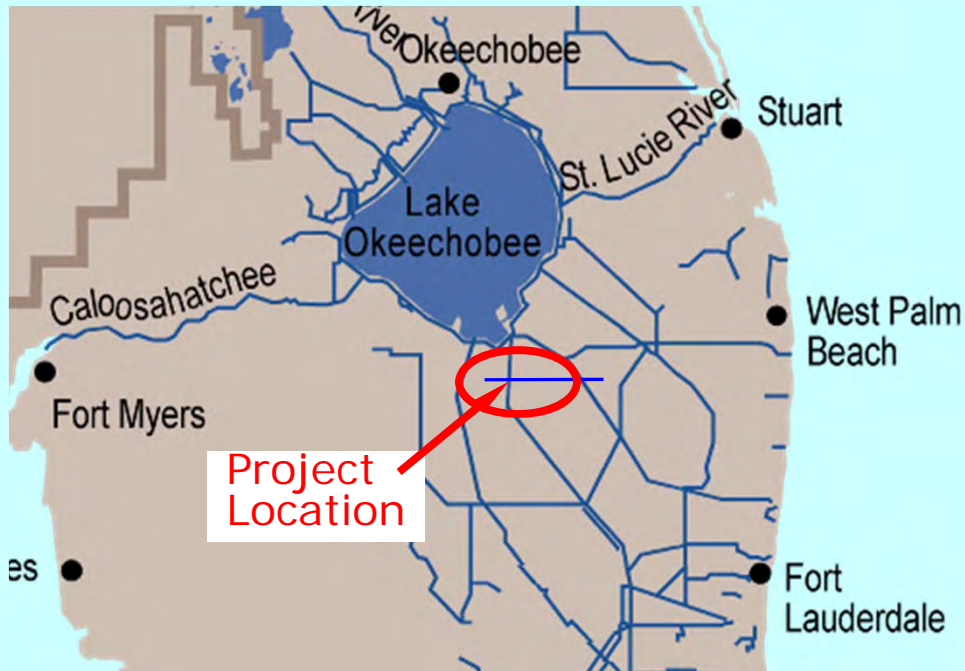
# EAA Reservoir A-1



- Accomplishments to date:
  - Mobilization, and 12 miles of seepage canal completed and 22 miles of muck removal (GMP 1 & 3) .
  - Rock Mining aggregate production under way (GMP 2) - initial production phase complete.
  
- What's next:
  - Issue NTP for embankment construction (GMP 4)
  - Initiate pump equipment procurement
  - Begin negotiation on Pump Station and Structures (GMP5)
  
- Current Status:
  - Project to be placed on Standby June 1, 2008 until resolution of NRDC Lawsuit on the USACE 404 Permit



# Bolles (L-21) Canal Improvements

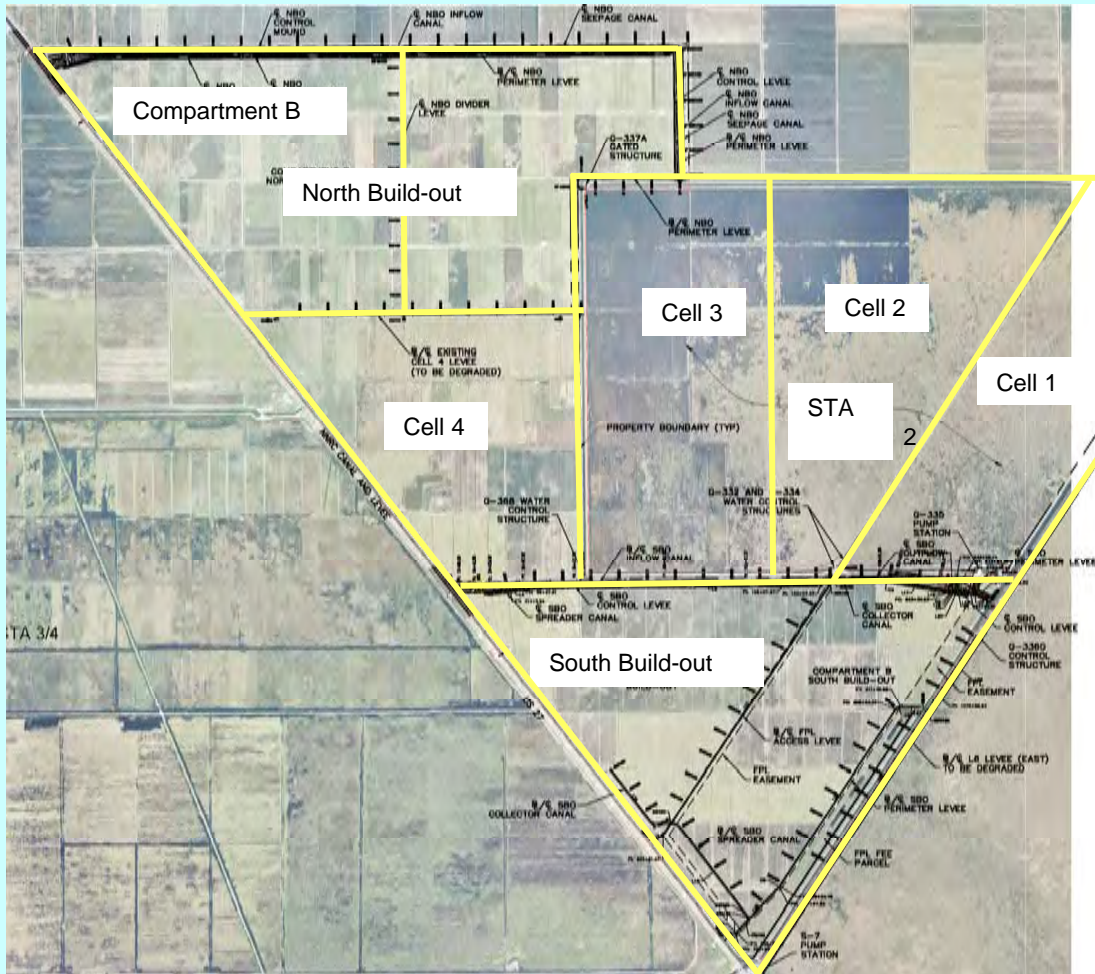


- Basis of Design Report complete

**Everglades Protection Area Tributary Basins  
Long-Term Plan for Achieving Water Quality Goals**



# Compartment B STAs



**Purpose:** The development of additional Stormwater Treatment Area (STA) to further improve the quality of water discharging to the Everglades Protection Area (EPA) by assisting with the redistribution of flows and loads to the STA system.

## Completed

- Phase 1 – Initial Expansion
- STA-2 Cell 4 (1,902 Acres of Treatment Area)

## Under Design

- Phase 2 - Build-out
- Compartment B Build-Out (6,722 Acres of Treatment Area)

**Everglades Protection Area Tributary Basins  
Long-Term Plan for Achieving Water Quality Goals**



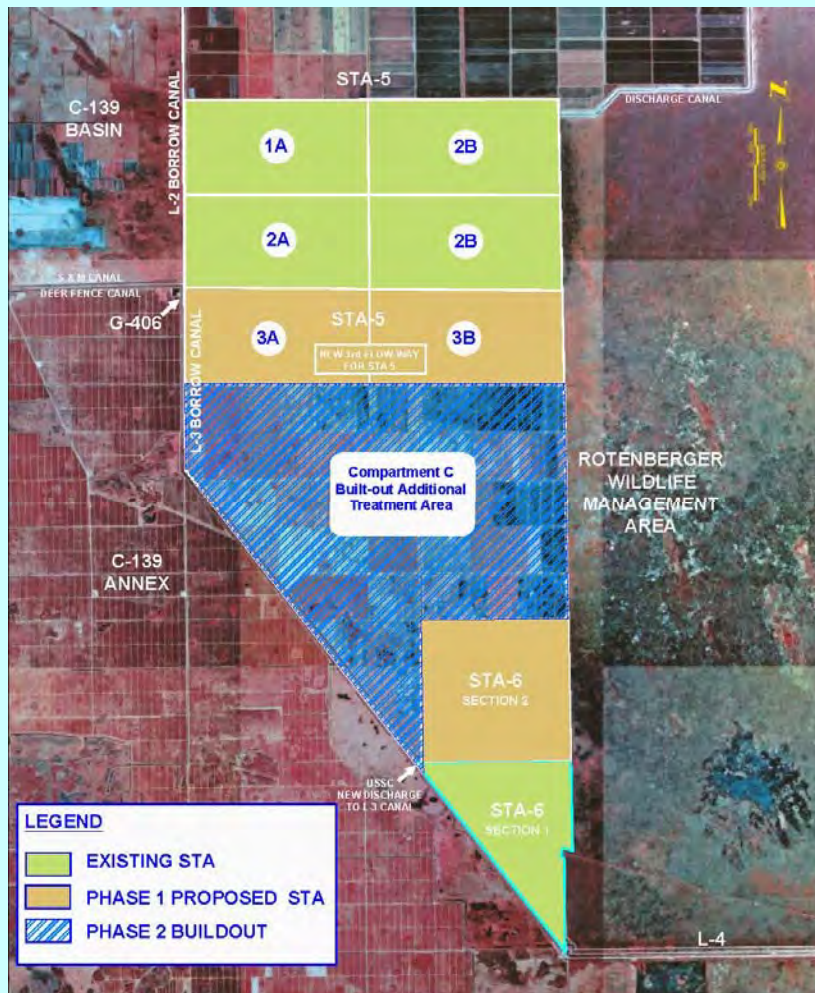
# **Compartment B – Phase 2 Compartment B Build-out**



- **Accomplishments to date:**
  - **Completed Survey work (topographic & boundary)**
  - **Completed Geotechnical Data Collection**
  - **Completed Final Basis of Design Report**
  - **Completed Preliminary Design-Civil Works**
  - **Completed Preliminary Design-Pump Stations**
  - **Completed Intermediate Design-Civil Works**
  
- **What's next:**
  - **Complete Pre-Final Design-Civil Works**
  - **Complete Intermediate Design-Pump Stations**
  
- **Construction Completion**
  - **Civil Works 2010**
  - **Pump Stations 2011**



# Compartment C STAs



**Purpose:** The development of additional Stormwater Treatment Area (STA) to further improve the quality of water discharging to the Everglades Protection Area (EPA) by assisting with the redistribution of flows and loads to the STA system.

## Completed

- Phase 1 – Initial Expansion
- STA-5 Flow-way 3 (1,985 Acres of Treatment Area)
- STA-6 Section 2 (1,387 Acres of Treatment Area)

## Under Design

- Phase 2 - Build-out
- Compartment C Build-Out (6,200 Acres of Project Area)

**Everglades Protection Area Tributary Basins  
Long-Term Plan for Achieving Water Quality Goals**





# Compartment C – Phase 2

## Compartment C Build-out

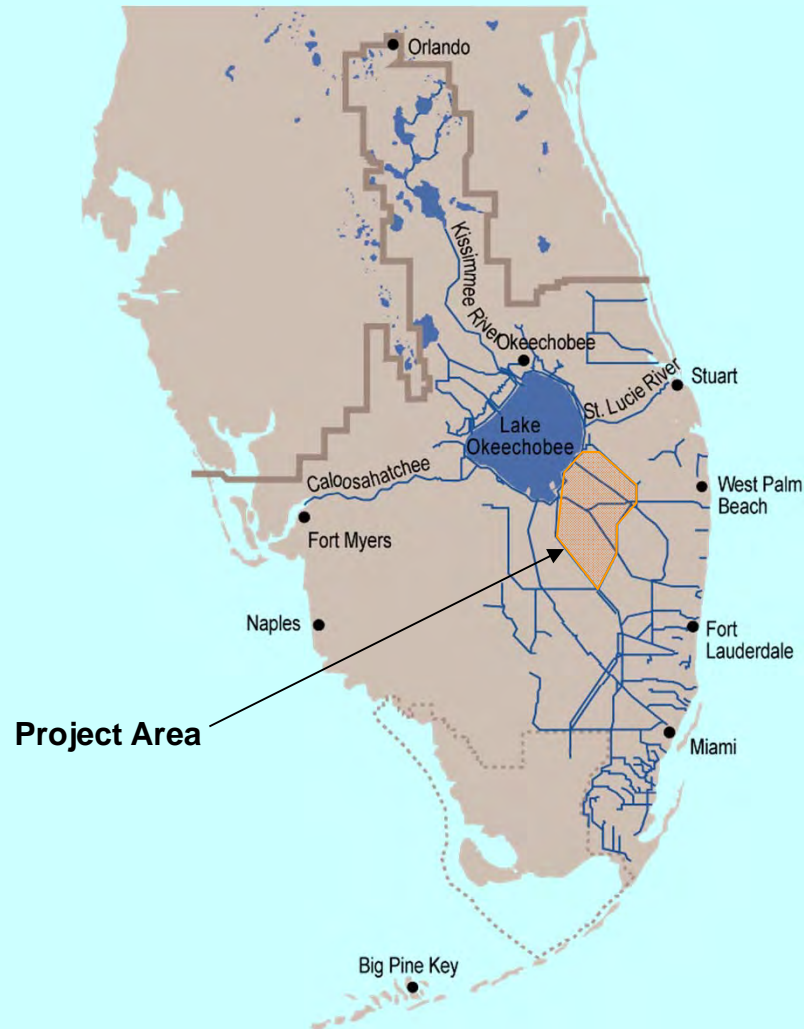


- **Accomplishments to Date:**
  - **Completed Preliminary Survey Work (topographic & boundary)**
  - **Completed Preliminary Geotechnical Data Collection**
  - **Completed Compartment C Watershed Hydraulic Study**
  - **Completed Final Basis of Design Report**
  - **Completed Preliminary Design-Civil Works**
  - **Completed Intermediate Design-Civil Works**
  
- **What's Next:**
  - **Complete Pre-Final Design-Civil Works**
  - **Complete Preliminary Design-Pump Station**
  
- **Construction Completion**
  - **Civil Works 2010**
  - **Pump Station 2011**

**Everglades Protection Area Tributary Basins  
Long-Term Plan for Achieving Water Quality Goals**



# EAA Conveyance and Regional Treatment (ECART) Project



## Project Purpose:

Redistribution of flows and loads to optimize the performance of the existing and expanded STAs to improve water quality in the EPA.

**Everglades Protection Area Tributary Basins  
Long-Term Plan for Achieving Water Quality Goals**



# EAA Conveyance and Regional Treatment (ECART) Project



## EAA RFS Alternative 1

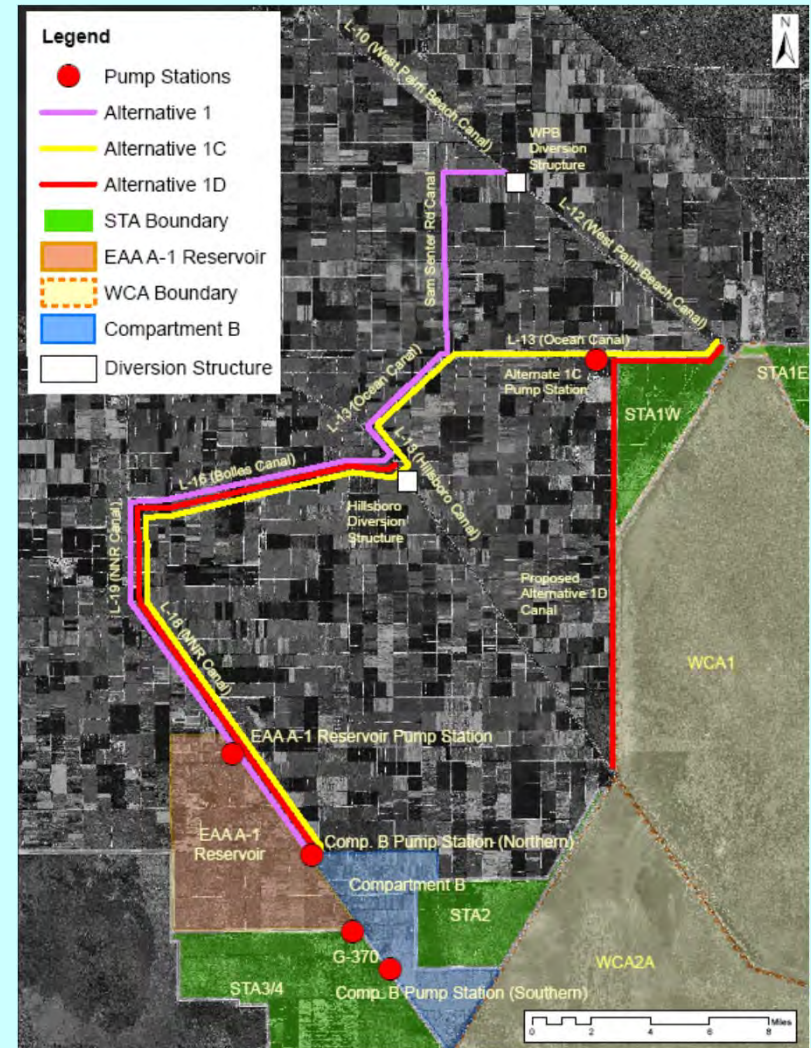
- 40 miles of canal work
- New structure at West Palm Beach Canal
- New structure at Hillsboro Canal
- 1,354 acres of land acquisition

## Alternative 1C

- Delete new structure at West Palm Beach Canal
- Delete connection from West Palm Beach Canal to Sam Senter Canal
- New 800 cfs pump station on Ocean Canal
- Improvements to Ocean Canal
- 870 acres of land acquisition

## Alternative 1D

- Delete new structure at West Palm Beach Canal
- Delete connection from West Palm Beach Canal to Sam Senter Canal
- No improvements to Hillsboro and Ocean Canals
- New canal from Ocean Canal to Hillsboro Canal
- 1,208 acres of land acquisition



**Everglades Protection Area Tributary Basins  
Long-Term Plan for Achieving Water Quality Goals**



# EAA Conveyance and Regional Treatment (ECART) Project



- Accomplishments to Date:
  - Completed Feasibility Analysis of Alternatives 1C & 1D
  - Initiated Preliminary Survey
  - Initiated Environmental Sampling Scope of Work Development
  - Initiated Preliminary Geotechnical
- What's Next:
  - Complete Preliminary Geotechnical
  - Complete Preliminary Survey

**Everglades Protection Area Tributary Basins  
Long-Term Plan for Achieving Water Quality Goals**



# L-8 Reservoir Temporary Pumps Status



L-8 Reservoir

## Permanent Outflow Pump Station

- Final Conceptual Design Report received

## Temporary Outflow Pumps

- Permit for 150 cfs outflow capacity
- Pumps operational up to 150 cfs



Farmer Pump



Culvert Outflow



Connection to Culvert



Pump Intake

**Everglades Protection Area Tributary Basins  
Long-Term Plan for Achieving Water Quality Goals**