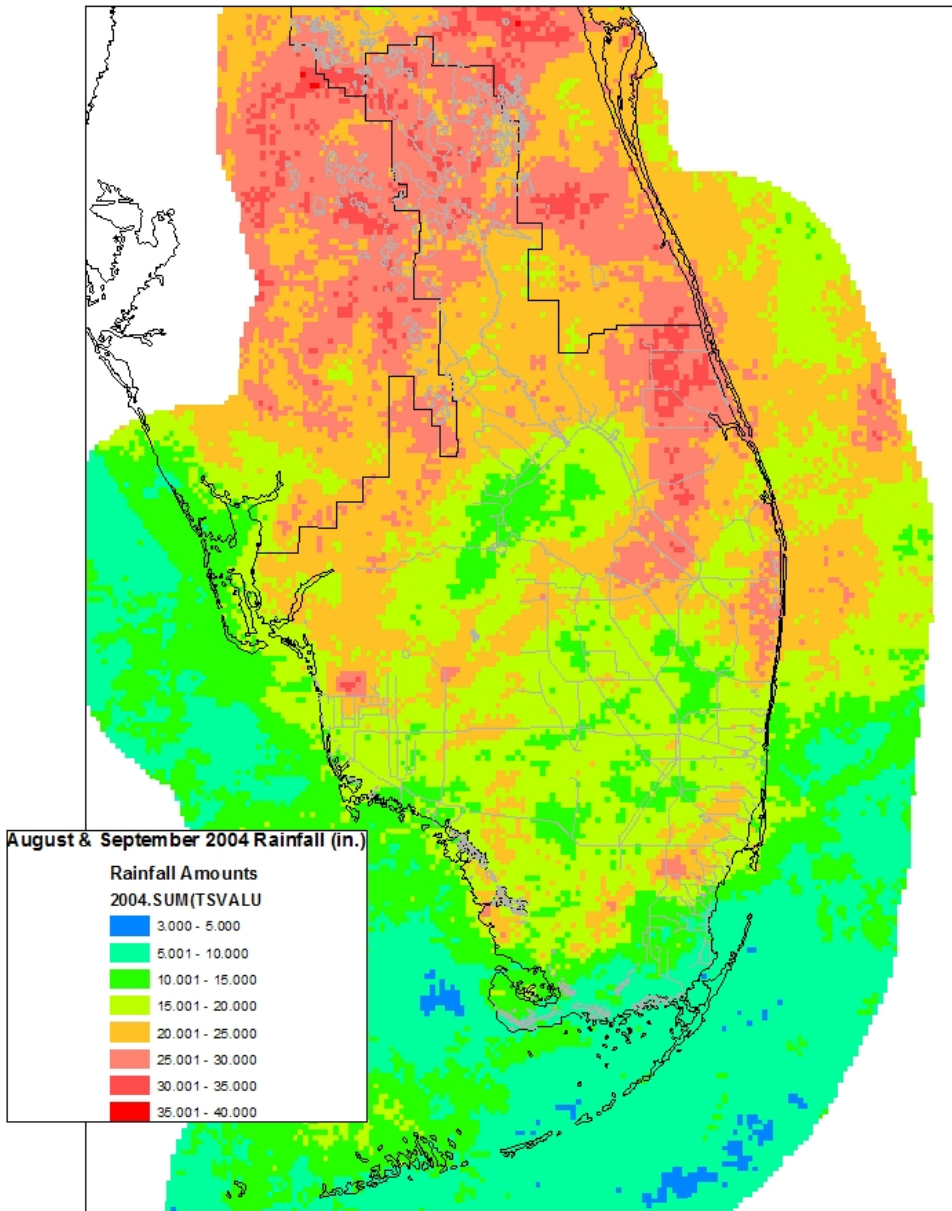


## Monthly areal rainfall on each rain area for the months of August and September, 2004 and return periods.

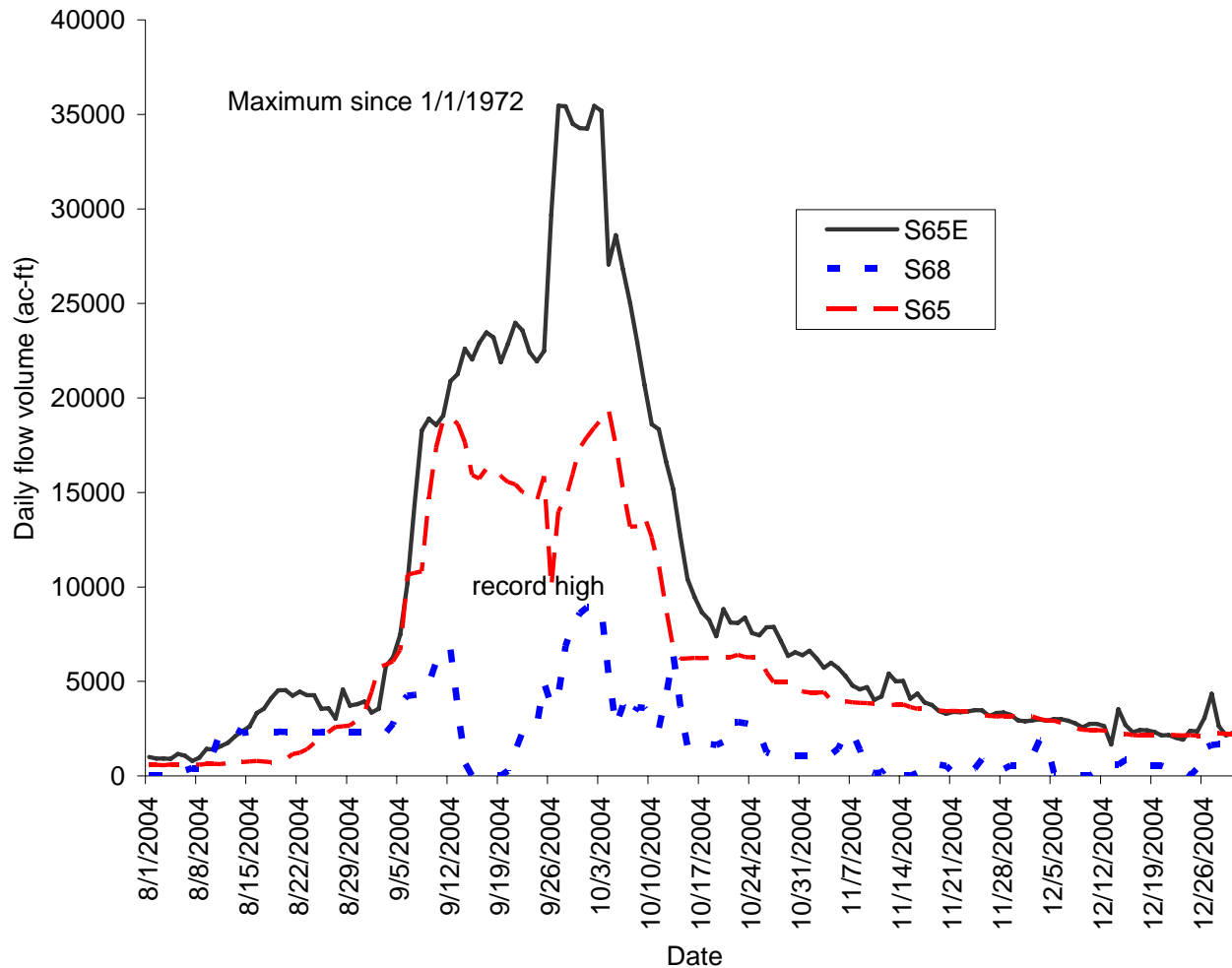
	August	return period	comment	September	return period	comment
	rainfall (in)	years		rainfall (in)	years	
Upper Kissimmee	12.7	<b>50</b>		17.38	<b>100</b>	>
Lower Kissimmee	9.59	20	<	11.84	<b>100</b>	
Lake Okeechobee	9.62	10	>	10.22	10	
East EAA	10.63	10	<	10.05	5	
West EAA	13.54	20	<	7.51	2	
WCA1&2	9.63	10	<	9.98	10	<
WCA3	9.32	---		6.19	----	
Martin-St. Lucie	9.65	10	<	17.86	<b>50</b>	>
Palm Beach	8.51	5	<	17.69	<b>50</b>	>
Broward	9.74	5		9.67	5	<
Miami-Dade	8.03	2	>	8.44	2	
E Caloosahatchee	13.4	<b>50</b>		8.19	5	<
Big Cypress Basin	12.22	----		7.52	----	
Southwest Coast	13.93	20	>	6.82	2	<

(working draft)

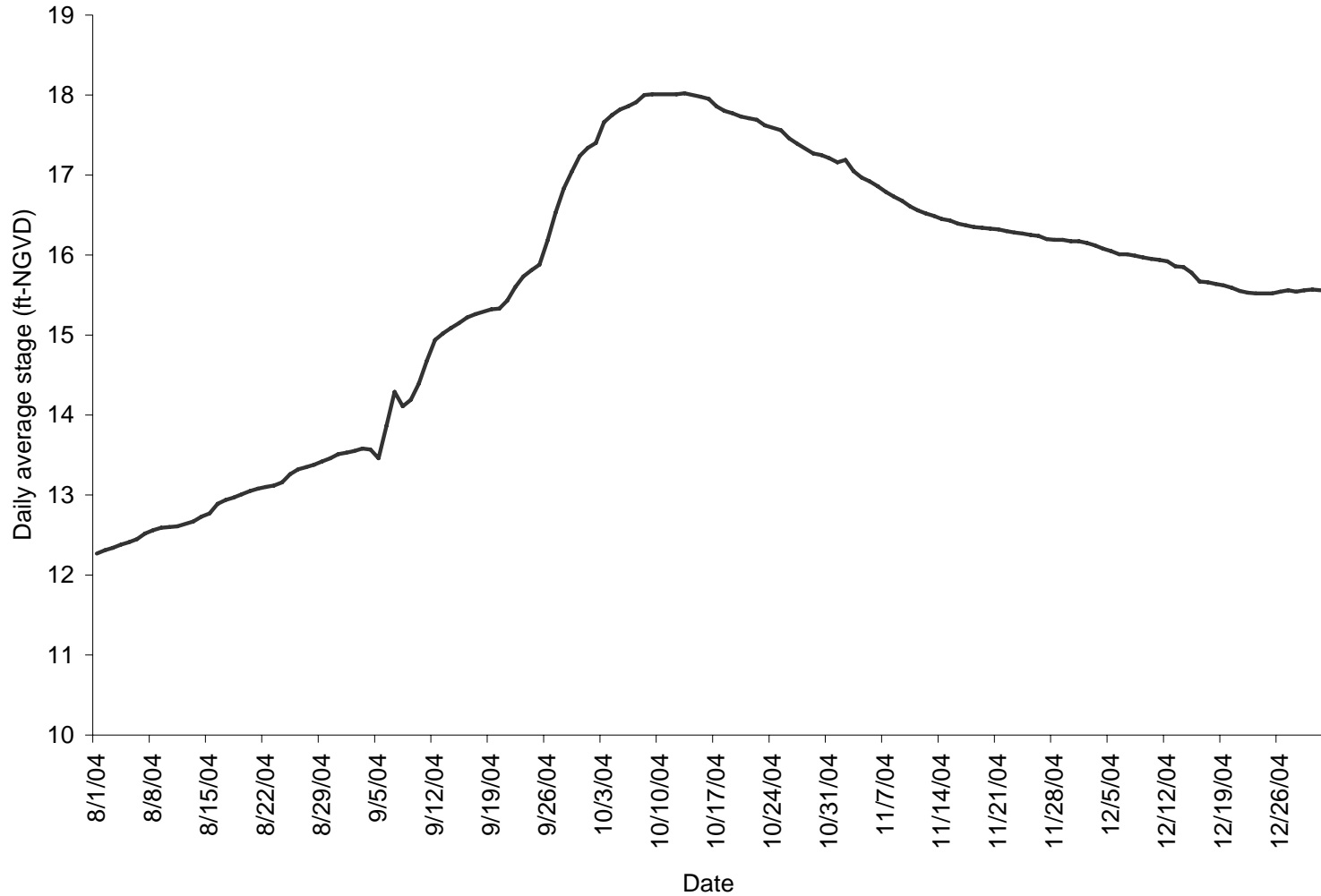


(working draft)

# Lake Kissimmee (S-65), Lake Istokpoga (S-68) outflow and Lake Okeechobee (S-65E) inflow (August 1, 2004 to December 31, 2004)

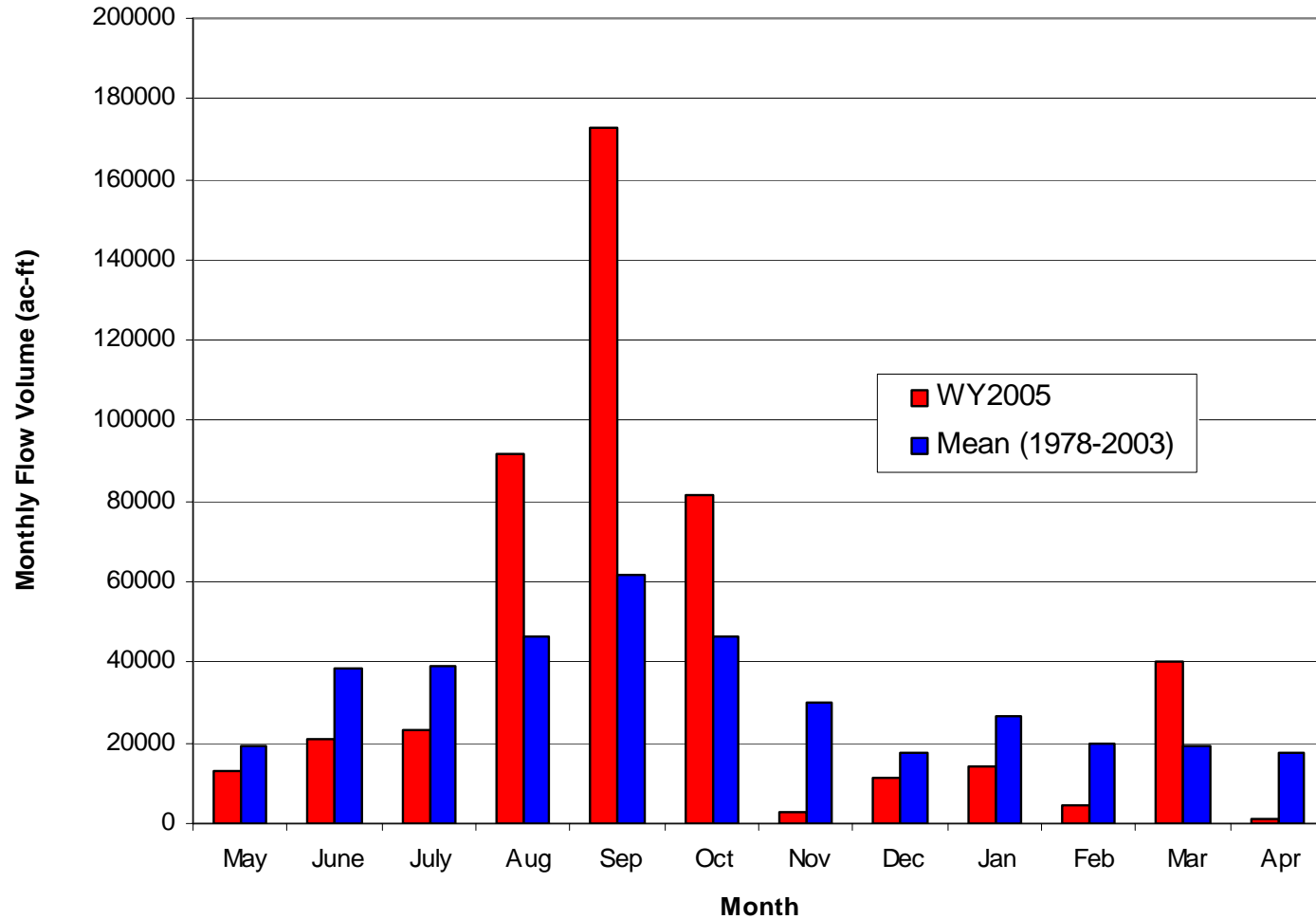


# Water level changes in Lake Okeechobee during the 2004 hurricane events



(working draft)

# WY2005 and Mean Monthly Inflow to LNWR



# Water level changes in LNWR (WCA-1) during the 2004 hurricane events

