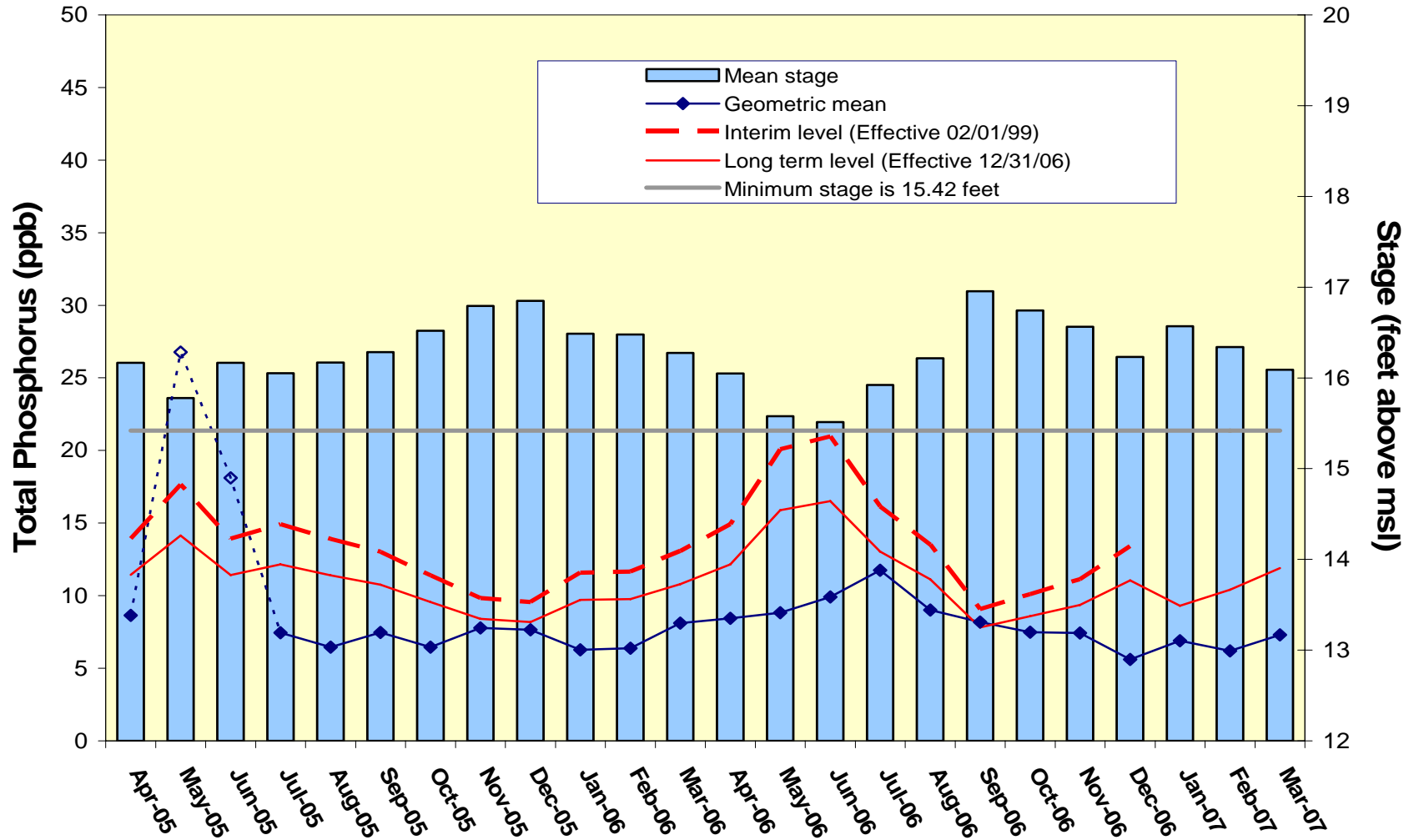


Settlement Agreement

January 2007 - March 2007

Prepared for the
Technical Oversight Committee
May 22, 2007

A.R.M Loxahatchee National Wildlife Refuge Monthly Total Phosphorus Geometric Mean Concentrations



Loxahatchee National Wildlife Refuge

Total Phosphorus Compliance Tracking

Month - Year	Geometric Mean Concentration	Interim Level (ppb)	Long Term Level (ppb)	Average Stage ^a	Number of TP Samples	Number of Stage Measurements
	(ppb)	Effective 2/1/99	Effective 12/31/06	(ft NGVD)		
Apr-2005	8.6	13.9	11.4	16.17	11	3
May-2005 ^b	(26.8)	17.7	14.1	15.78	(10)	3
Jun-2005 ^b	(18.1)	13.9	11.4	16.17	(14)	3
Jul-2005	7.4	14.9	12.1	16.05	14	3
Aug-2005	6.5	13.9	11.4	16.17	12	3
Sep-2005	7.5	13.0	10.8	16.28	11	3
Oct-2005	6.5	11.4	9.6	16.52	13	3
Nov-2005	7.8	9.8	8.4	16.79	14	3
Dec-2005	7.6	9.6	8.2	16.85	14	3
Jan-2006	6.3	11.6	9.7	16.49	13	3
Feb-2006	6.4	11.7	9.8	16.48	13	3
Mar-2006	8.1	13.1	10.8	16.28	12	3
Apr-2006	8.4	14.9	12.2	16.05	12	3
May-2006	8.8	20.1	15.9	15.58	10	3
Jun-2006	9.9	21.0	16.5	15.51	5	3
Jul-2006	11.7	16.1	13.0	15.92	9	3
Aug-2006	9.0	13.5	11.1	16.22	11	3
Sep-2006	8.2	9.1	7.8	16.96	14	3
Oct-2006	7.5	10.1	8.6	16.74	14	3
Nov-2006	7.4	11.1	9.4	16.56	14	3
Dec-2006	5.6	13.4	11.0	16.23	11	3
Jan-2007	6.9	11.1	9.3	16.57	14	3
Feb-2007	6.2	12.6	10.4	16.34	13	3
Mar-2007	7.3	14.5	11.8	16.10	10	3

Refuge TP Compliance Tracking for January 2007 – April 2007

Month - Year	Geometric Mean Concentration	Interim Level (ppb)	Long Term Level (ppb)	Average Stage (ft NGVD)	Number of TP Samples	Number of Stage Measurements
	(ppb)	Effective 2/1/99	Effective 12/31/06			
Jan-2007	6.9	11.1	9.3	16.57	14	3
Feb-2007	6.2	12.6	10.4	16.34	13	3
Mar-2007	7.3	14.5	11.8	16.10	10	3
Apr-2007	8.0	N/A	N/A	15.30	3	3

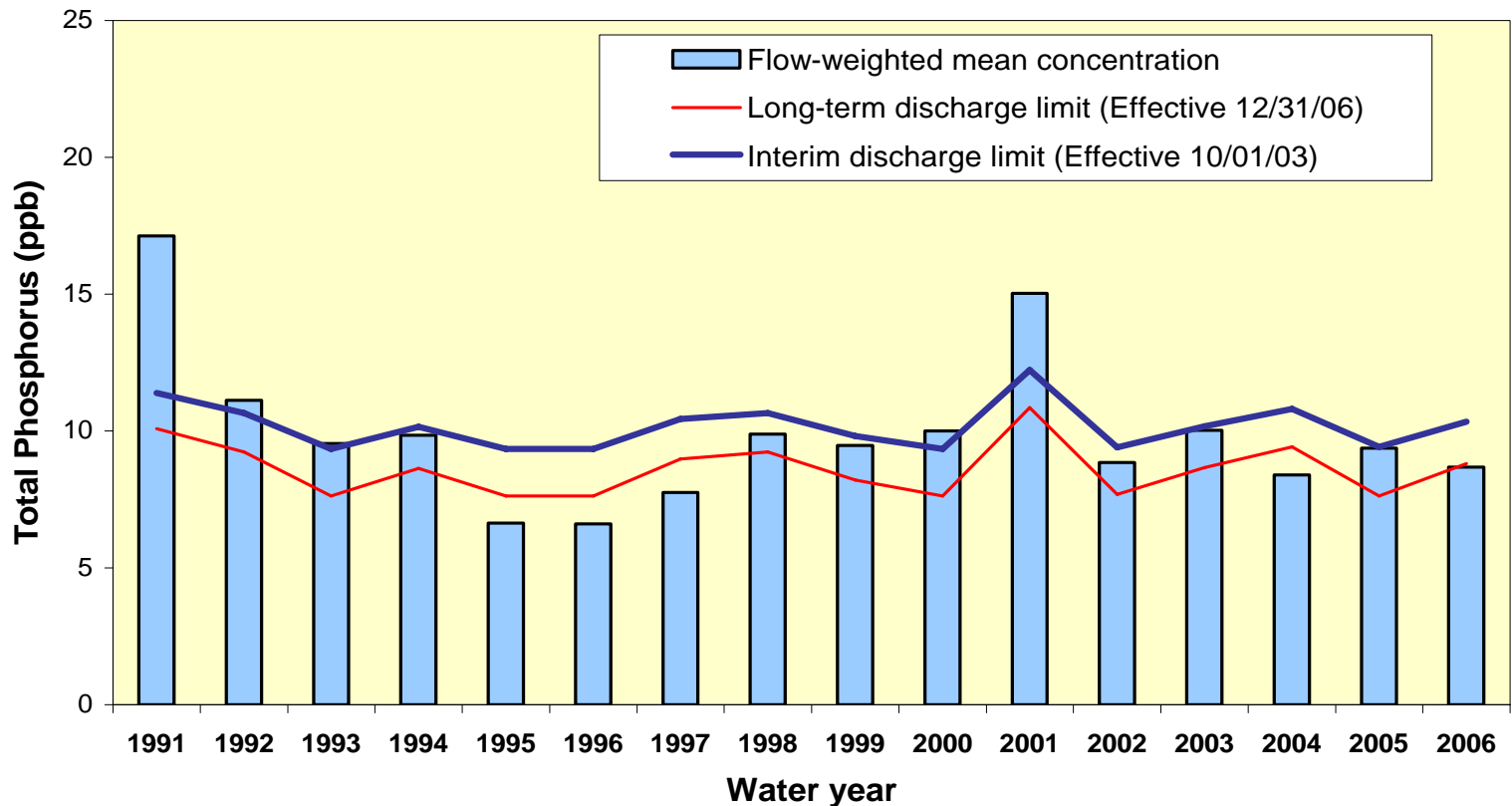
A.R.M. Loxahatchee National Wildlife Refuge (May 11, 2007)



A.R.M. Loxahatchee National Wildlife Refuge (May 11, 2007)

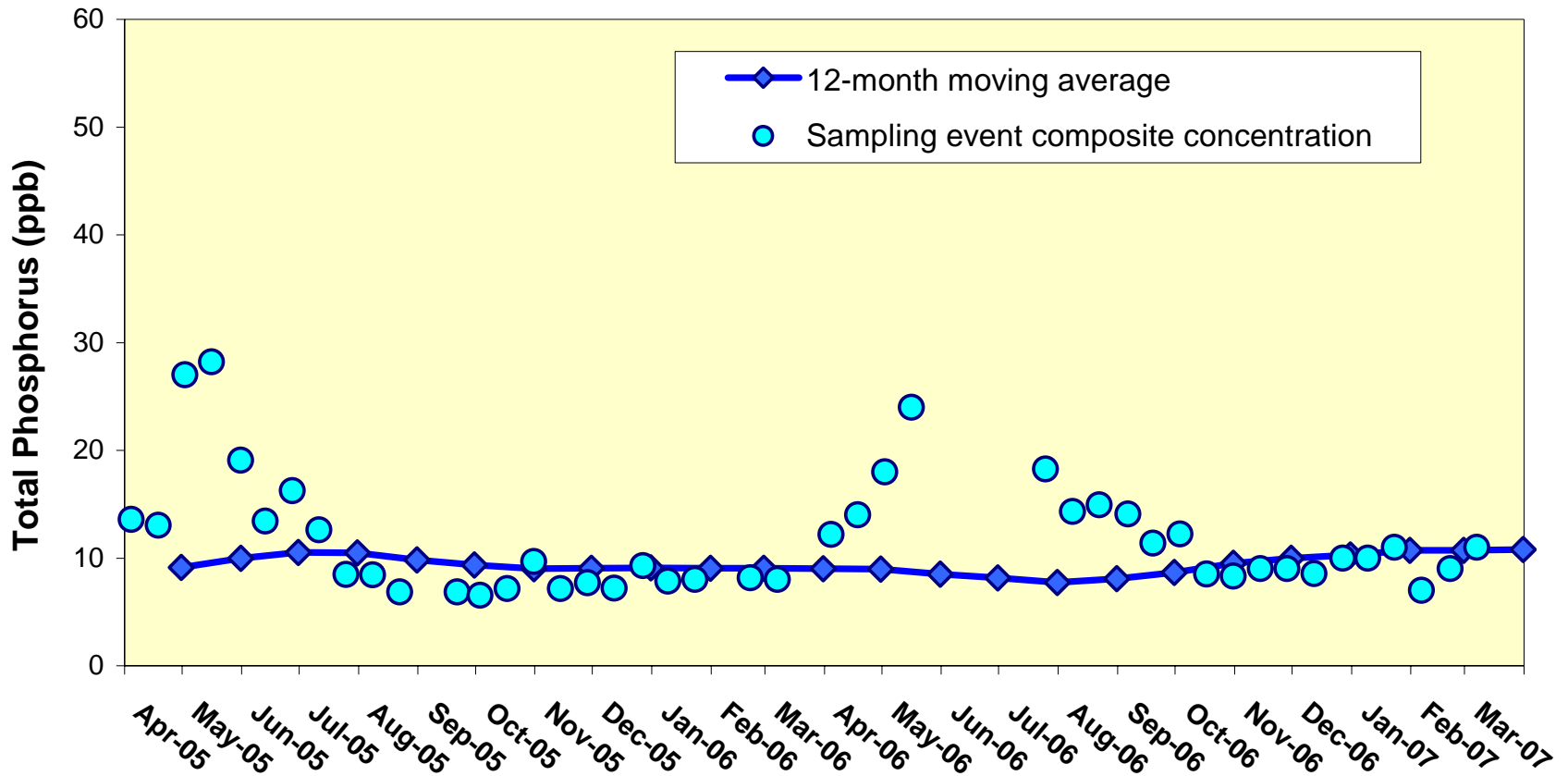


Flow-weighted Mean Concentrations Inflows to ENP through Shark River Slough



12-month FWMC at the end of each water year compared to the TP interim and long-term limits.

Flow-Weighted Mean Concentrations Inflows to ENP through Shark River Slough



12-month FWMC at the end of each month and the composite TP concentration for each sampling event.

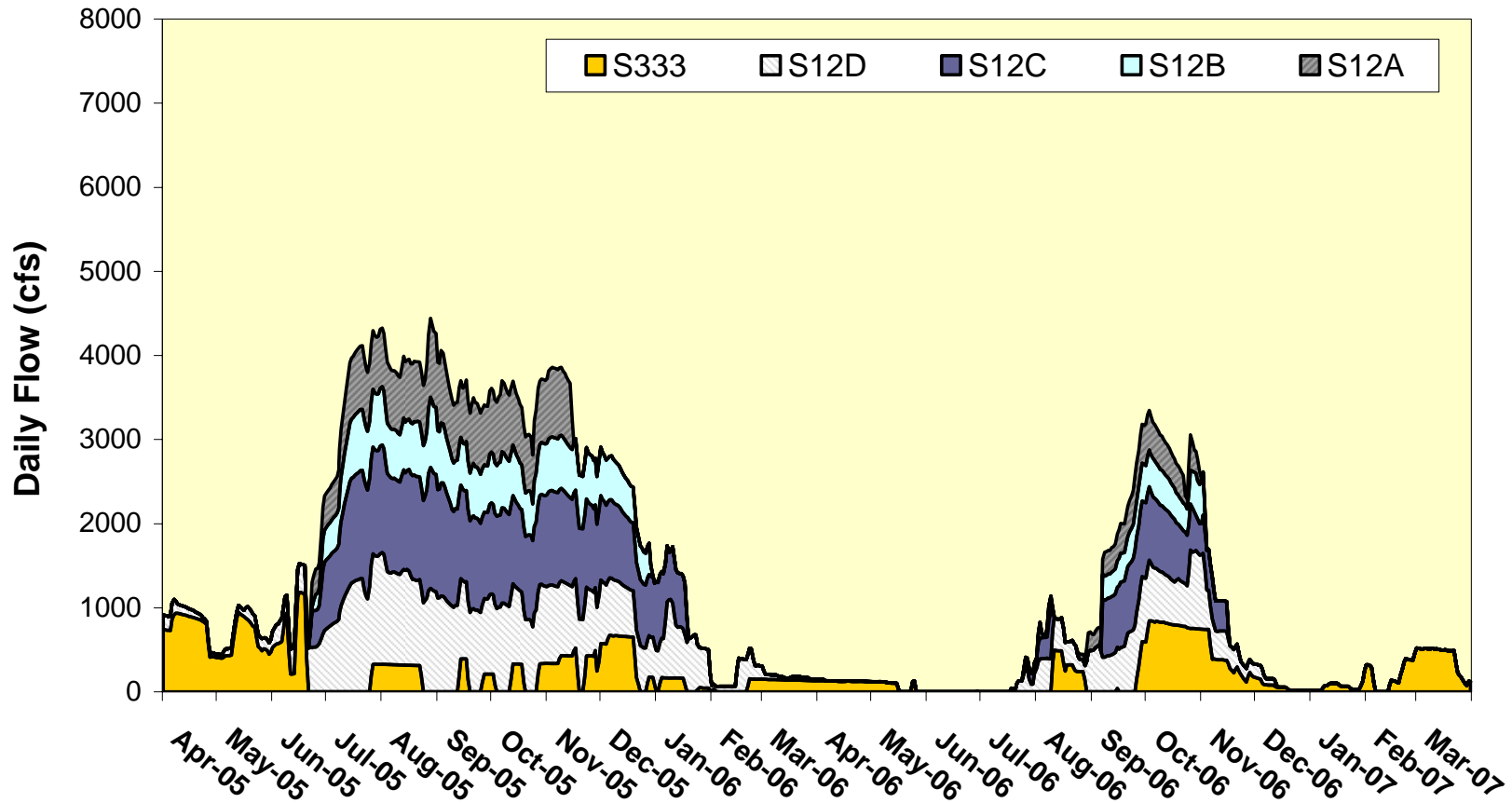
Shark River Slough TP Concentration Compliance Tracking

12-Month Period Ending On	Total Period Flow (kac-ft)	Flow Weighted Mean Total Phosphorus (ppb)	Interim Limit (ppb)	Long Term Limit (ppb)	Percent of Sampling Events Greater than 10 ppb	
			Effective 10/1/2003	Effective 12/31/2006	(%)	
					Guideline	Observed
30-Apr-05	732.6	9.1	10.7	9.3	48.2	46.7
31-May-05	767.1	10.0	10.5	9.1	47.3	50.0
30-Jun-05	836.0	10.5	10.2	8.7	45.4	55.6
31-Jul-05	1054.7	10.5	9.4	7.7	40.3	55.0
31-Aug-05	1269.2	9.8	9.4	7.6	40.1	47.6
30-Sep-05	1345.9	9.4	9.4	7.6	40.1	42.9
31-Oct-05	1338.1	9.0	9.4	7.6	40.1	40.9
30-Nov-05	1381.7	9.1	9.4	7.6	40.1	42.9
31-Dec-05	1447.6	9.1	9.4	7.6	40.1	42.9
31-Jan-06	1507.7	9.0	9.4	7.6	40.1	39.1
28-Feb-06 ^a	1497.6	9.0	9.4	7.6	40.1	39.1
31-Mar-06 ^a	1481.0	9.0	9.4	7.6	40.1	34.8
30-Apr-06 ^a	1436.0	9.0	9.4	7.6	40.1	34.8
31-May-06 ^a	1395.5	8.5	9.4	7.6	40.1	31.8
30-Jun-06 ^a	1326.6	8.2	9.4	7.6	40.1	25.0
31-Jul-06 ^a	1113.3	7.7	9.4	7.6	40.1	26.3
31-Aug-06 ^b	914.7	8.1	9.9	8.3	43.5	36.8
30-Sep-06 ^b	814.0	8.7	10.3	8.8	46.0	45.0
31-Oct-06 ^b	779.6	9.5	10.5	9.0	46.9	50.0
30-Nov-06 ^b	642.7	10.0	11.1	9.7	50.8	50.0
31-Dec-06 ^b	507.9	10.3	11.8	10.5	55.0	50.0
31-Jan-07 ^b	446.1	10.7	12.1	10.9	57.0	55.0
28-Feb-07 ^b	444.2	10.7	12.1	10.9	57.1	52.4
31-Mar-07 ^b	457.8	10.8	12.0	10.8	56.6	57.1

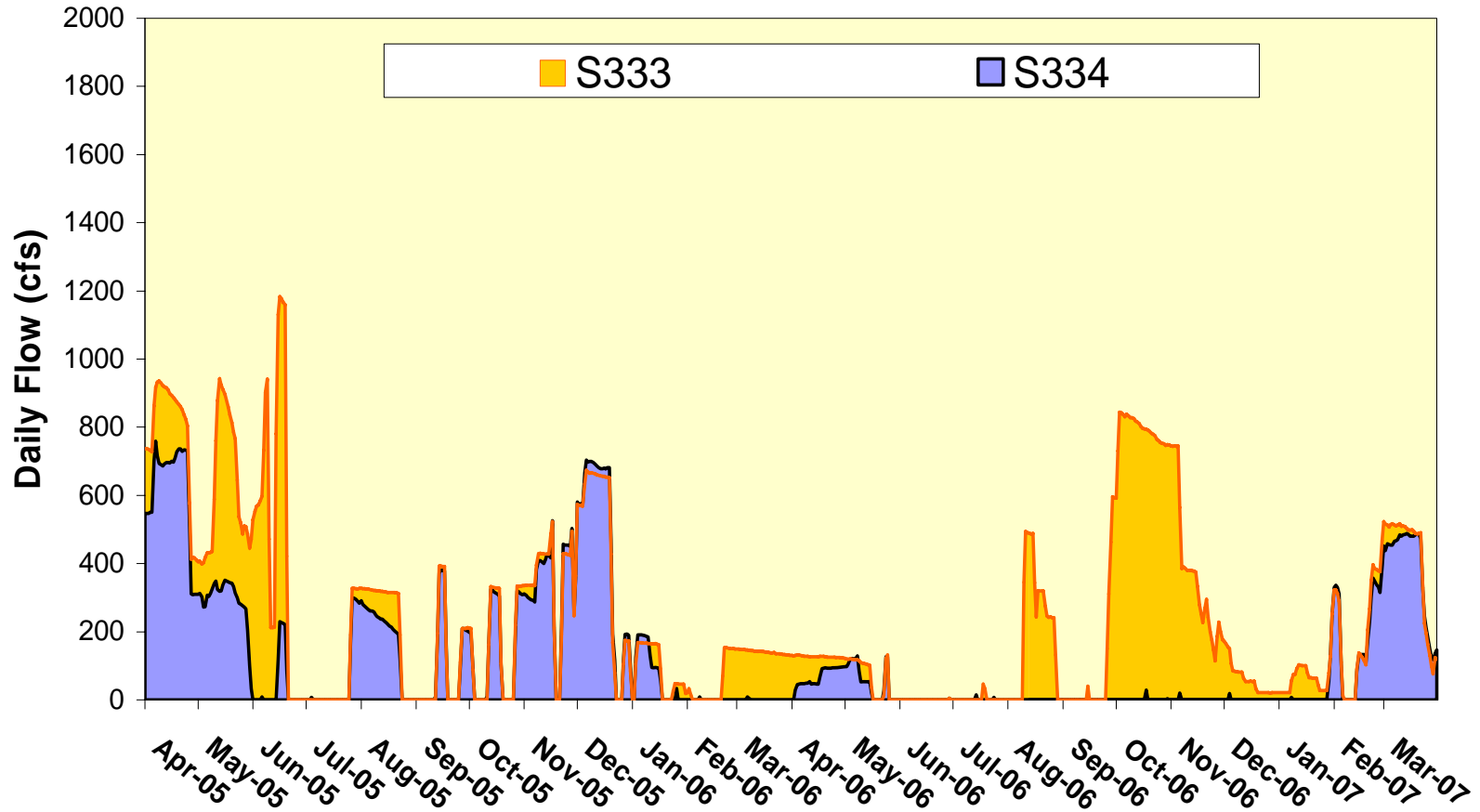
Shark River Slough TP Concentration Compliance Tracking for January 2007 – May 2007

12-Month Period Ending On	Total Period Flow (kac-ft)	Flow Weighted Mean Total Phosphorus (ppb)	Interim Limit (ppb)	Long Term Limit (ppb)	Percent of Sampling Events Greater than 10 ppb	
			Effective	Effective	(%)	
			10/1/2003	12/31/2006	Guideline	Observed
31-Jan-07 ^b	446.1	10.7	12.1	10.9	57.0	55.0
28-Feb-07 ^b	444.2	10.7	12.1	10.9	57.1	52.4
31-Mar-07 ^b	457.8	10.8	12.0	10.8	56.6	57.1

Shark River Slough Daily Flows by Structure

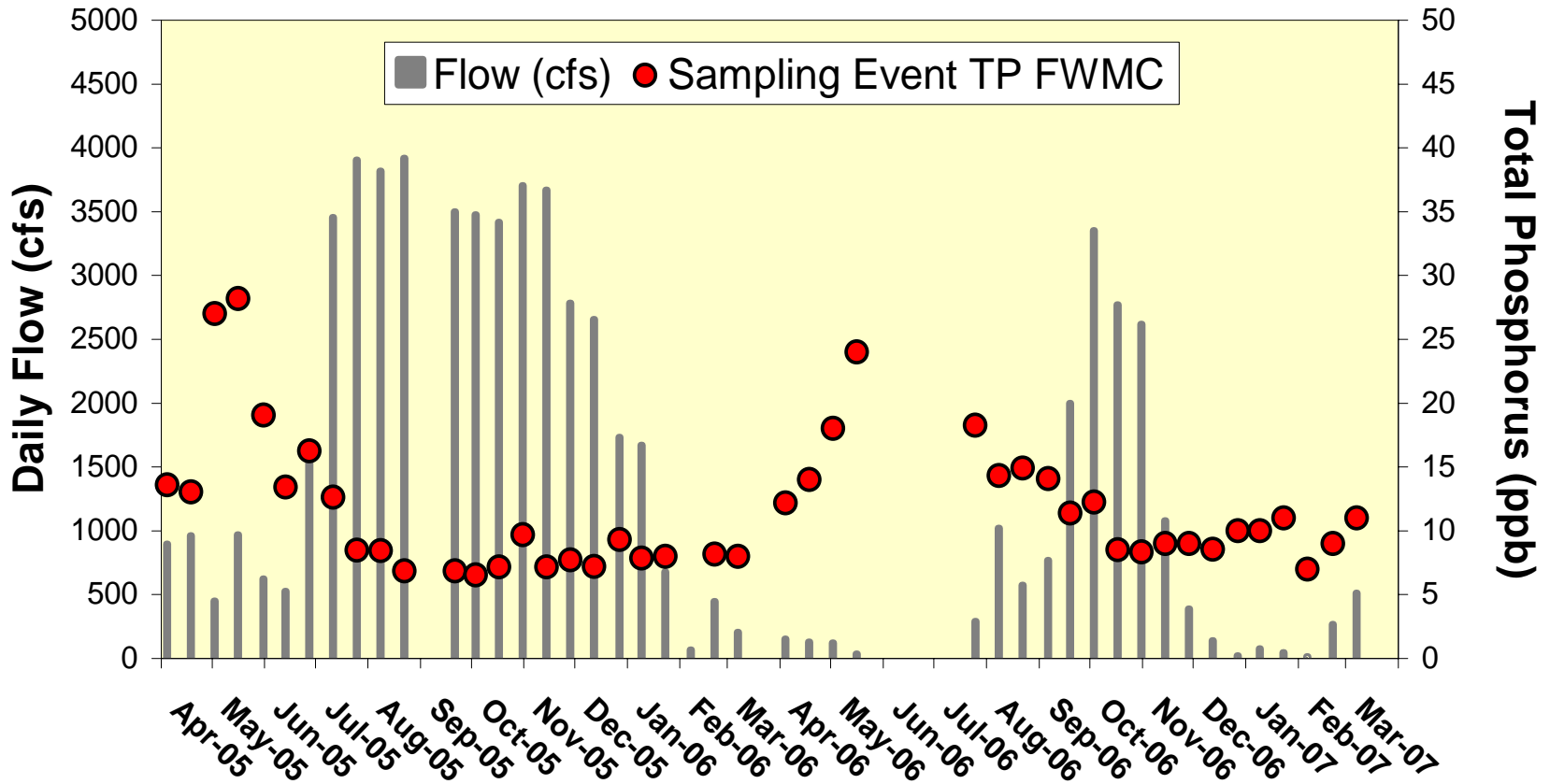


Daily flow at S333 and S334



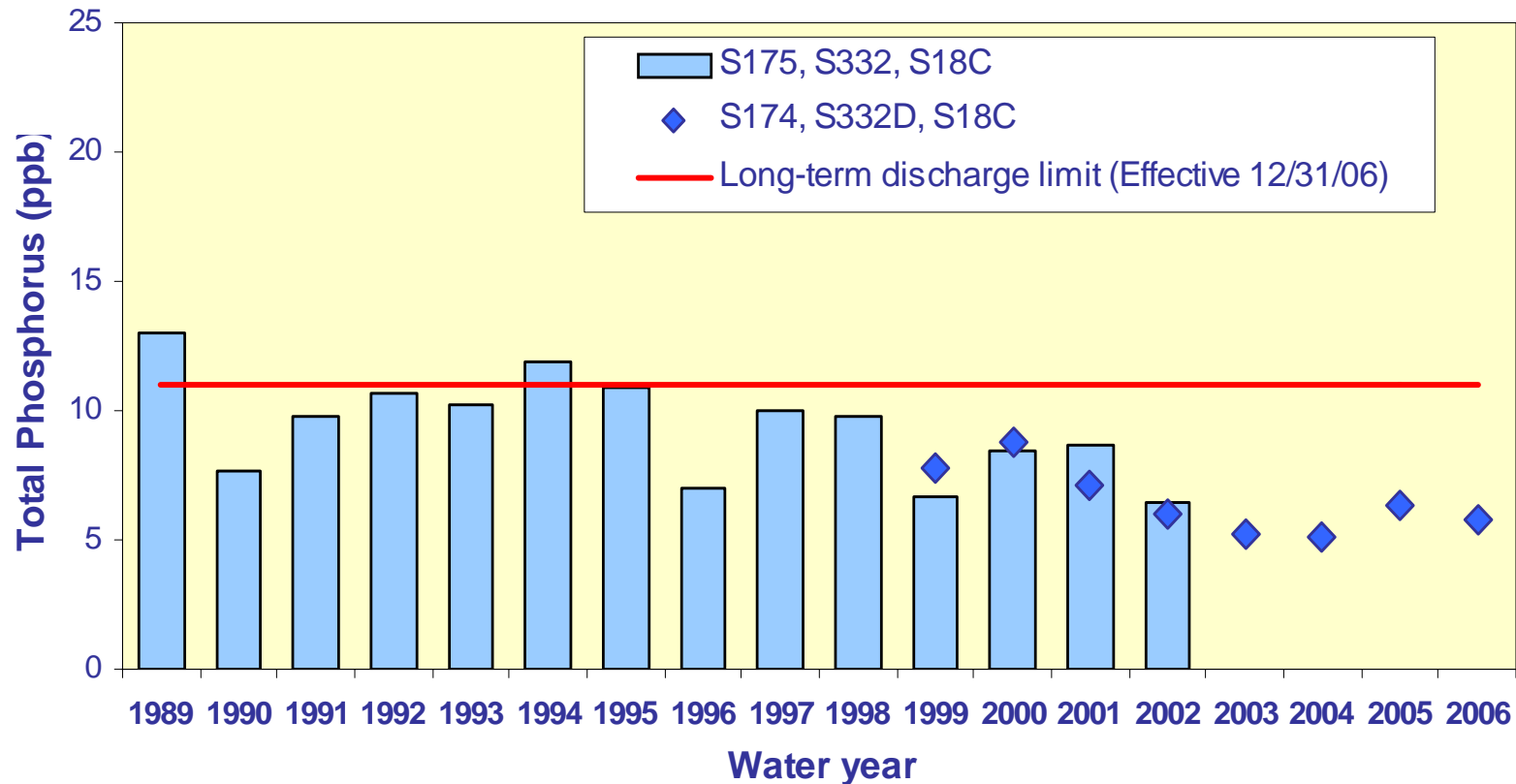
Shark River Slough

Sampling Event Daily Flows and FWMC



Daily flow at Shark River Slough structures and the corresponding TP FWMCs for individual sampling events.

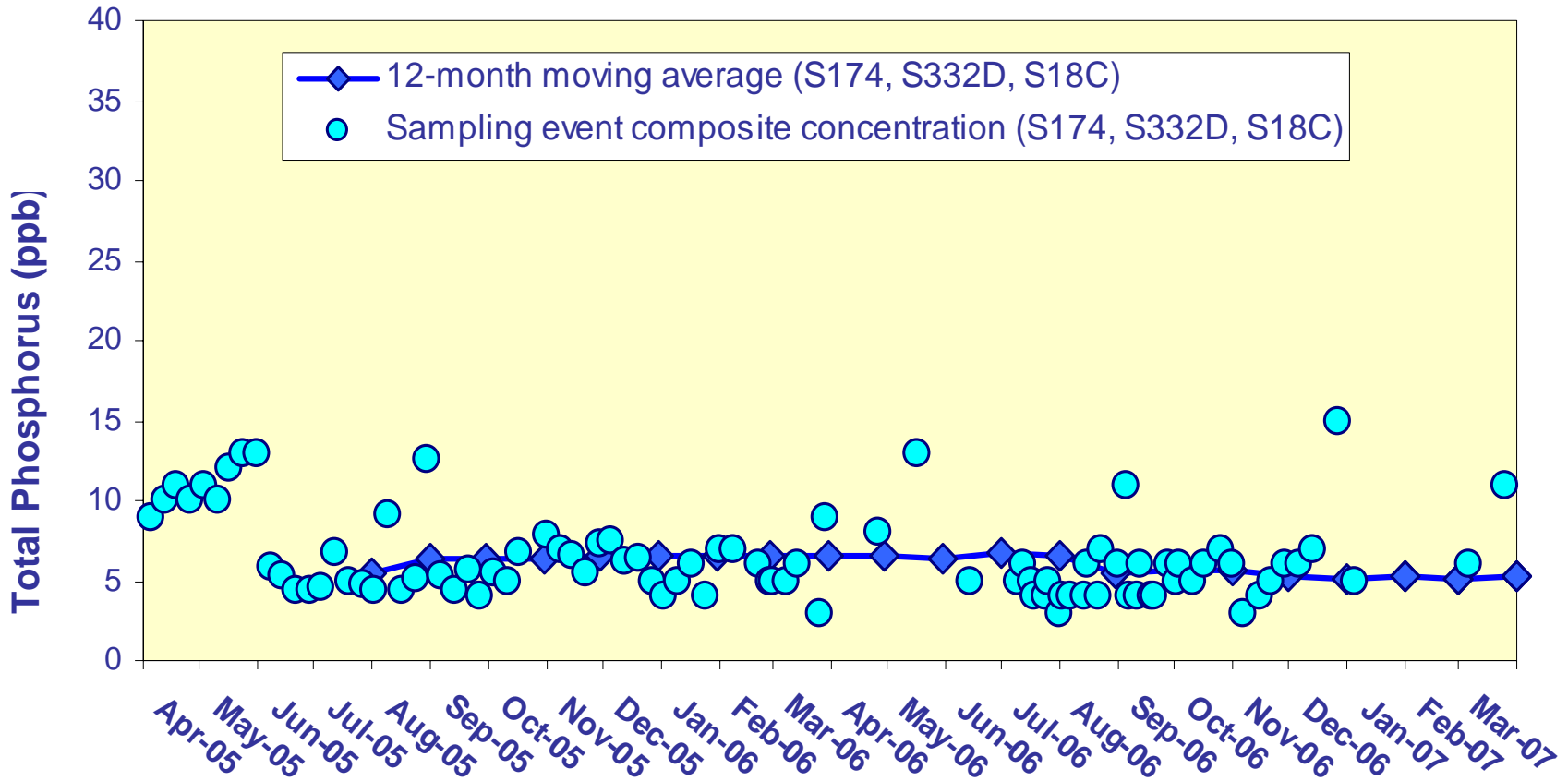
TP Flow-Weighted Mean Concentrations Inflows to the ENP through Taylor Slough and the Coastal Basins



The 12-month FWMC at the end of each water year compared to the 11 ppb long-term total phosphorus limit.

TP Flow-Weighted Mean Concentrations

Inflows to the ENP through Taylor Slough and the Coastal Basins



The 12-month FWMC at the end of each month and the composite TP concentration for each sampling event.

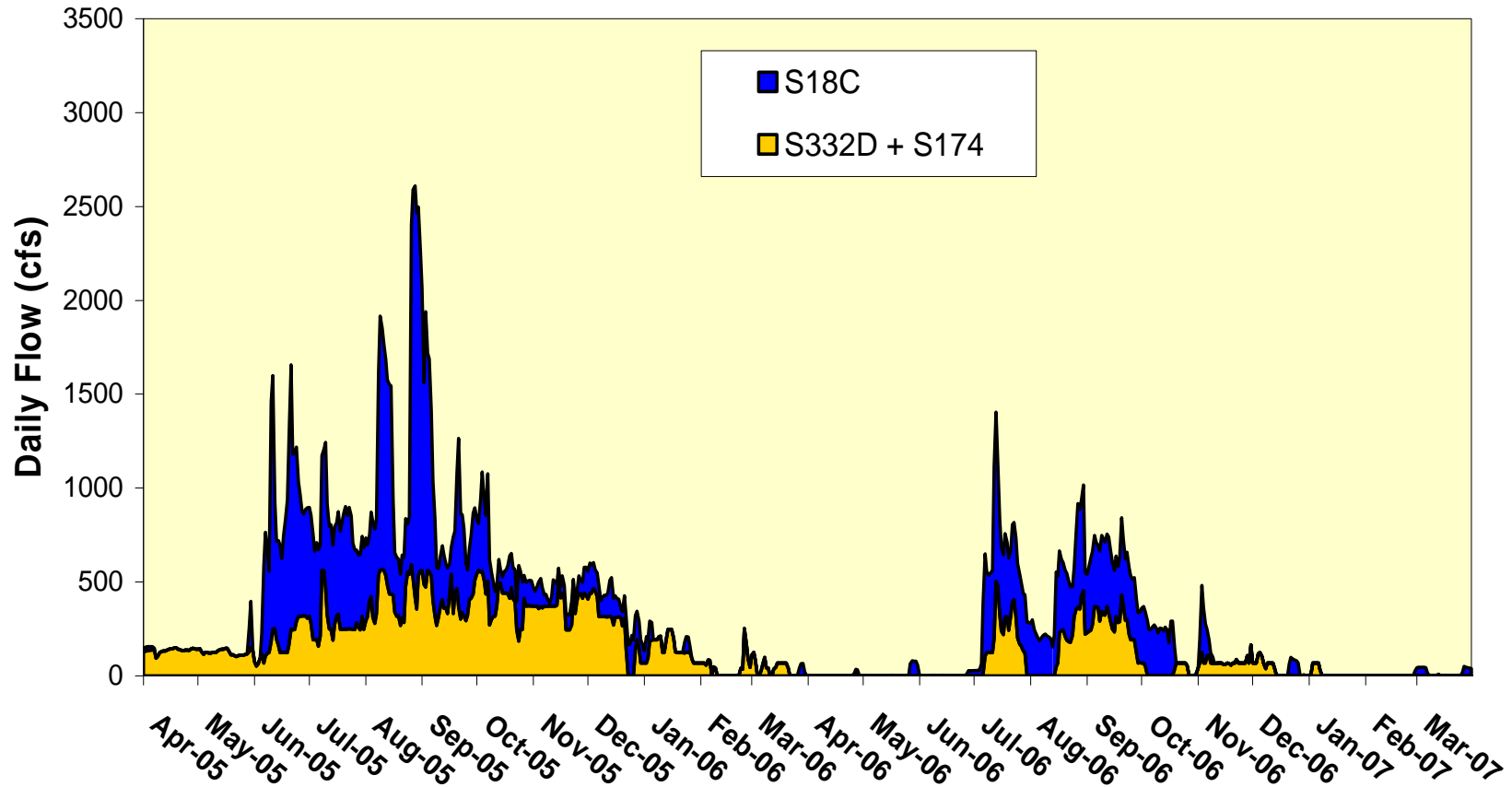
Taylor Slough and the Coastal Basins TP Concentration Compliance Tracking

12-Month Period Ending On	Total Period Flow (kac-ft)	Flow Weighted Mean Total Phosphorus (ppb)	Long Term Limit (Effective 12/31/06) (ppb)	Percent of Sampling Events Greater than 10 ppb	
				(%)	
				Guideline	Observed
30-Apr-05	207.2	5.6	11.0	53.1	13.3
31-May-05	214.1	5.9	11.0	53.1	18.8
30-Jun-05	261.0	5.5	11.0	53.1	14.6
31-Jul-05	304.6	5.4	11.0	53.1	10.4
31-Aug-05	357.1	6.4	11.0	53.1	12.2
30-Sep-05	380.0	6.3	11.0	53.1	12.2
31-Oct-05	373.4	6.3	11.0	53.1	12.2
30-Nov-05	358.6	6.6	11.0	53.1	12.0
31-Dec-05	366.9	6.6	11.0	53.1	11.8
31-Jan-06	369.5	6.6	11.0	53.1	11.8
28-Feb-06	364.6	6.6	11.0	53.1	11.8
31-Mar-06	359.7	6.6	11.0	53.1	11.8
30-Apr-06	351.5	6.5	11.0	53.1	10.4
31-May-06	343.7	6.4	11.0	53.1	4.5
30-Jun-06	295.5	6.7	11.0	53.1	4.9
31-Jul-06	280.0	6.6 ^a	11.0	53.1	4.5 ^a
31-Aug-06	227.0	5.5 ^a	11.0	53.1	2.2 ^a
30-Sep-06	207.4	5.7	11.0	53.1	4.1 ^a
31-Oct-06	179.5	5.6 ^a	11.0	53.1	3.9 ^a
30-Nov-06	158.8	5.3 ^a	11.0	53.1	3.9 ^a
31-Dec-06	137.4	5.2 ^a	11.0	53.1	6.0 ^a
31-Jan-07	127.6	5.2	11.0	53.1	6.4
28-Feb-07	125.4	5.2	11.0	53.1	7.0
31-Mar-07	123.8	5.2	11.0	53.1	10.0

Taylor Slough and the Coastal Basins TP Concentration Compliance Tracking for January 2007 – May 2007

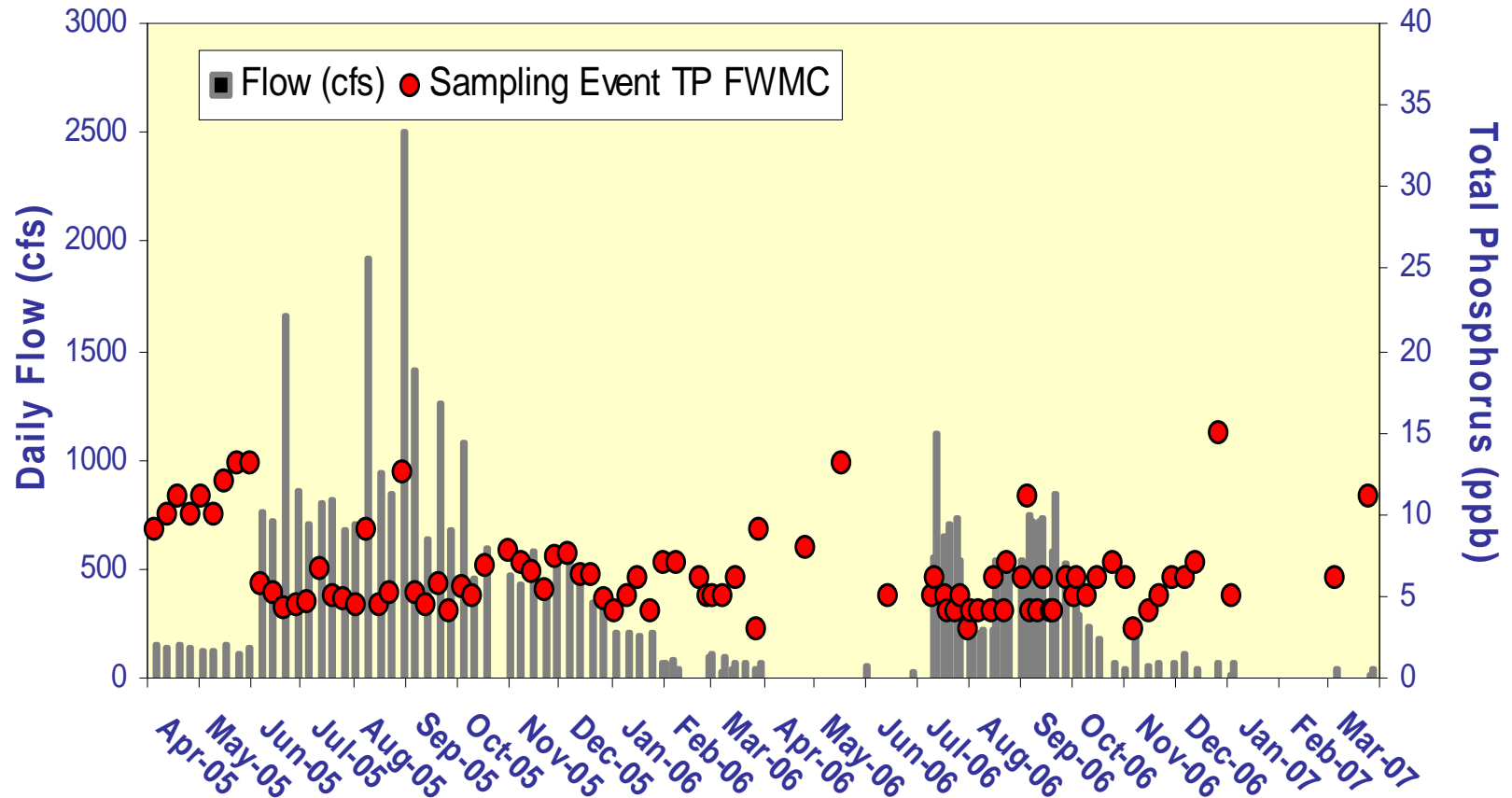
12-Month Period Ending On	Total Period Flow (kac-ft)	Flow Weighted Mean Total Phosphorus (ppb)	Long Term Limit (Effective 12/31/06) (ppb)	Percent of Sampling Events Greater than 10 ppb (%)	
				Guideline	Observed
31-Jan-07	127.6	5.2	11.0	53.1	6.4
28-Feb-07	125.4	5.2	11.0	53.1	7.0
31-Mar-07	123.8	5.2	11.0	53.1	10.0

Taylor Slough and S18C Daily Flows



Daily flows into Everglades National Park through Taylor Slough and S18C.

Taylor Slough and S18C Sampling Event Flows and FWMC



Daily flows at Taylor Slough structures and S18C and the corresponding TP for individual sampling events.