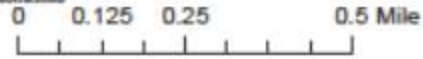




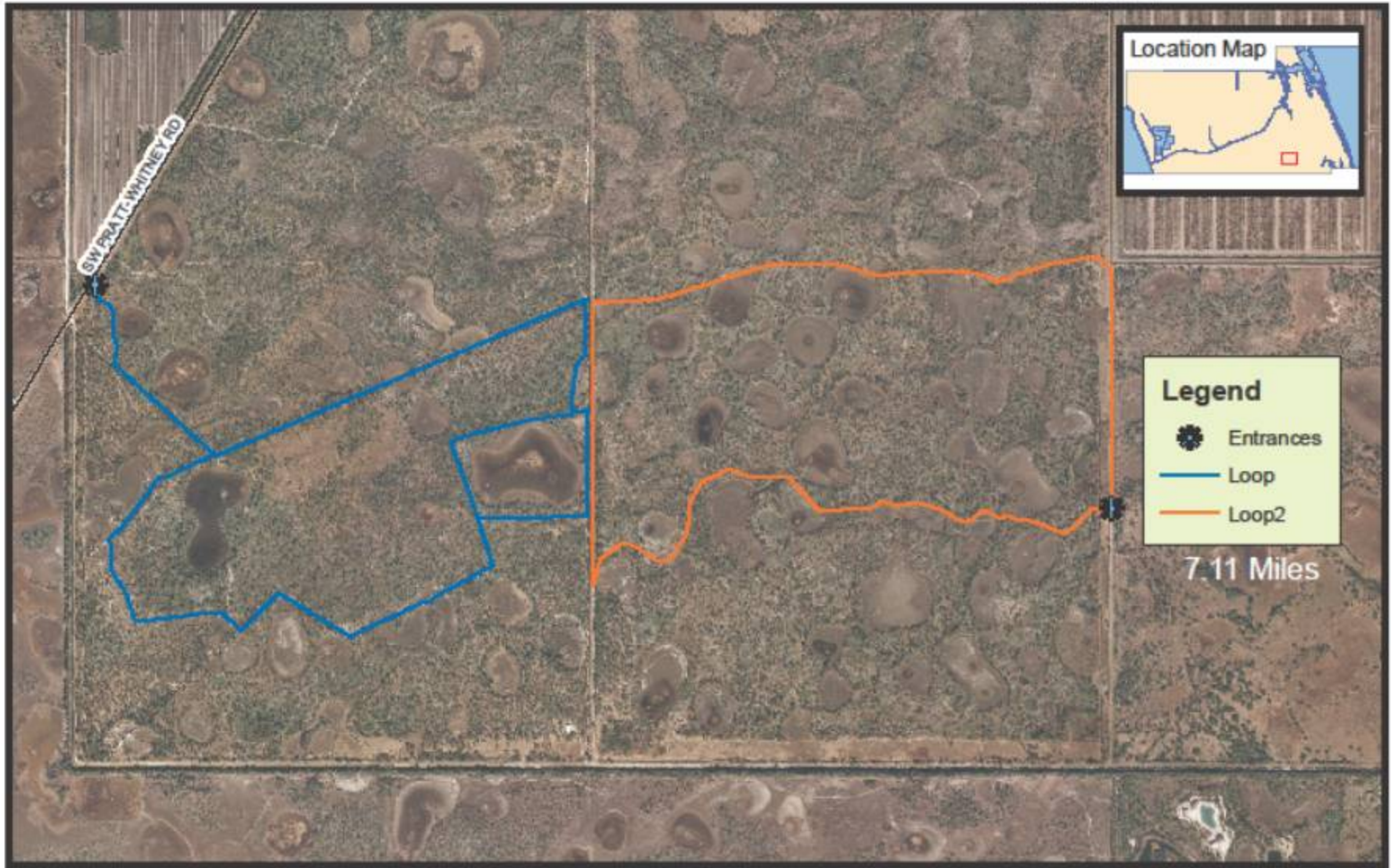
Martin County

Project Name: G:\projects\gnb\ba\Hungryland\Pal_Mar_East - 2 west sections.mxd
Created By: Basil Barry (ENG Dept)
Plot Date: October 27, 2010




Pal Mar East



Disclaimer
"The Geographic Information System Map Product, received from Martin County ("COUNTY") in fulfillment of a public records request is provided "as is" without warranty of any kind, and the COUNTY expressly disclaims all express and implied warranties, including but not limited to the implied warranties of merchantability and fitness for a particular purpose. The COUNTY does not warrant, guarantee, or make any representations regarding the use, or the results of the use, of the information provided to you by the COUNTY in terms of correctness, accuracy, reliability, timeliness or otherwise. The entire reliance is to the results and performance of any information obtained from the COUNTY is entirely assumed by the recipient."



Legend

-  Entrances
-  Loop
-  Loop2

7.11 Miles