

Quarterly Communications Meeting on the Long-Term Plan for Achieving Water Quality Goals for the Everglades Protection Area Tributary Basins
A-1 Flow Equalization Basin (FEB)

August 27, 2014

*Alan Shirkey, P.E.
Section Administrator
Project Management*

A-1 FEB – Location and Existing Conditions







A-1 FEB

- Design and Construction Schedule:
 - Preliminary Design – Completed
 - Intermediate Design Submittal – Completed
 - Final Design Submittal – Completed
 - Final Design TRB – Completed
 - Corrected Final/RTA Design Submittal – Completed
 - Governing Board – Completed
 - NTP – Completed
 - Substantial Completion – April 15, 2015
 - Final Completion – June 14, 2015

Milestones

Milestone	Compliance date	Status
Initiate design	4/1/2012	Complete
Submit state and federal permits	12/1/2012	Complete
Design status report	3/1/2013	Complete
Complete design	8/1/2013	Complete
Initiate construction	6/30/2014	Complete
Construction status report	3/1/2015	Pending
Construction status report	3/1/2016	Pending
Completion of construction	7/30/2016	Pending
Initial flooding and optimization complete	7/29/2018	Pending

Quarterly Communications Meeting on the Long-Term Plan for Achieving Water Quality Goals for the Everglades Protection Area Tributary Basins

L-8 Flow Equalization Basin

August 27, 2014

*Alan Shirkey, P.E.
Section Administrator
Project Management*

Project Location





Cells 1/2,4,5: -11.8' NAVD
Cell 3: -32.1' NAVD
Cell 6: -30.3' NAVD
Cell 7: -37.6' NAVD





Design/Build Schedule

- **Governing Board Approval** Completed
- **NTP** Completed
- **Preliminary Design (Revetment)** Completed
- **Preliminary Design (Pump and Inflow)** Completed
- **Final Design (Revetment)** Completed
- **Final Design (Pump and Inflow)** Completed
- **Revetment Construction – Roller Compacted Concrete completed, installation of Turf Reinforcement Mat continues**
- **Substantial Completion** April 18, 2015
- **Final Completion** October 15, 2015

Milestones

Milestone	Compliance date	Status
Submit state and federal permits	1/31/2014	Complete
Construction status report	3/1/2014	Complete
Construction status report	3/1/2015	Pending
Completion of construction	12/31/2016	Pending
Long term operations	12/31/2022	Pending

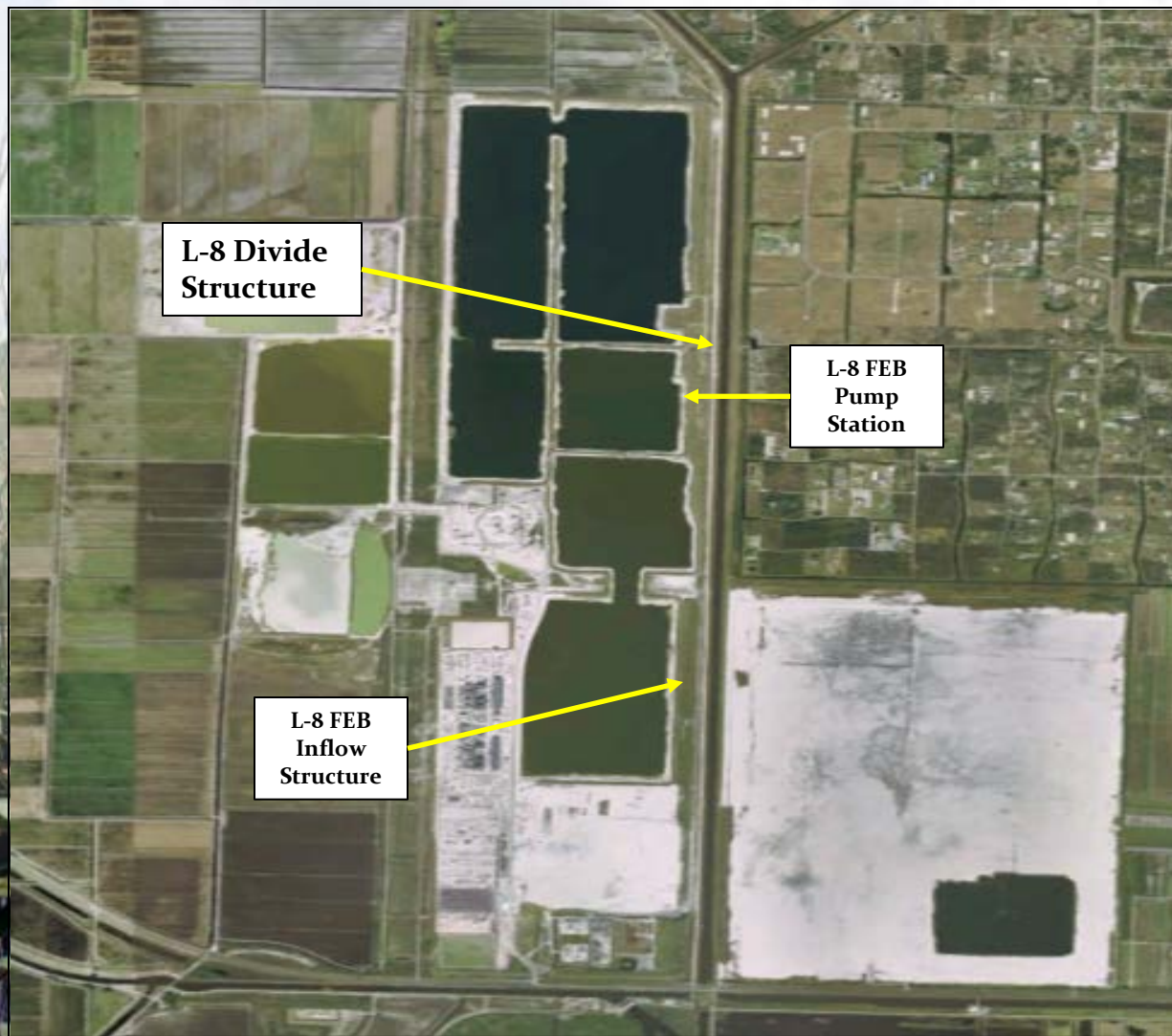
Quarterly Communications Meeting on the Long-Term Plan for Achieving Water Quality Goals for the Everglades Protection Area Tributary Basins

L-8 Divide Structure

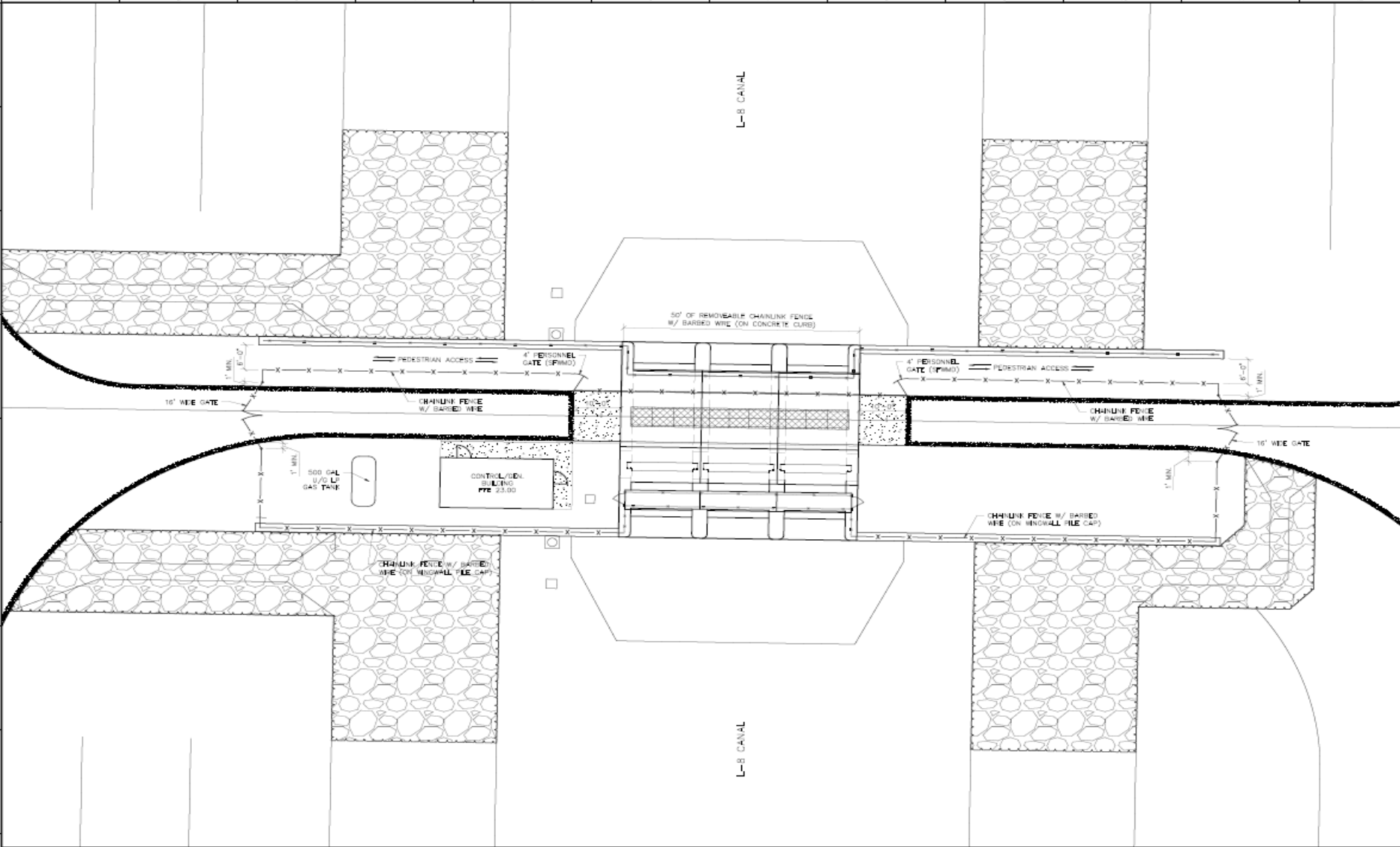
August 27, 2014

*Alan Shirkey, P.E.
Section Administrator
Project Management*

L-8 Divide Structure, G-541



L-8 Divide Structure, G-541



L-8 Divide Structure

•Design and Construction Schedule:

- Hydrographic & topographic survey for the 26 miles of the L-8 Canal/Levee from C-10A to S-5AS: Completed
- Hydrologic & Hydraulic modeling efforts for structure design: Completed
- Geotechnical survey for structure subsurface & seepage analysis: Completed

•Preliminary design due : Completed

•Final design package due: Completed

•Governing Board Contract Award: September 2014

•Notice to Proceed: October 2014

•Project Substantial Completion: February 2016

•Project Final Acceptance: May 2016

Milestones

Milestone	Compliance date	Status
Initiate design	10/1/2012	Complete
Complete design	9/30/2014	Complete
Initiate construction	10/1/2016	Pending
Complete construction	9/30/2018	Pending

Quarterly Communications Meeting on the Long-Term Plan for Achieving Water Quality Goals for the Everglades Protection Area Tributary Basins

S-5AS Divide Structure

August 27, 2014

*Alan Shirkey, P.E.
Section Administrator
Project Management*

S-5AS Divide Structure



S-5AS Divide Structure

•Design and Construction Schedule:

- Comprehensive Fluid Dynamic Model: Complete
- Structure Stability Review: Complete
- Preliminary design due: Complete
- Final design package due: Complete
- Project out for Bid: Complete
- Governing Board Approval : September 11, 2014
- Notice to Proceed : October 1, 2014
- Project Substantial Completion : April 1, 2016
- Project Final Acceptance: May 1, 2016

S-5AS Divide Structure Milestones

Milestone	Compliance date	Status
Initiate design	10/1/2012	Complete
Complete design	9/30/14	Complete
Initiate construction	10/1/14	Pending
Complete construction	9/30/16	Pending

Quarterly Communications Meeting on the Long-Term Plan for Achieving Water Quality Goals for the Everglades Protection Area Tributary Basins

G-716 Structure

August 27, 2014

*Alan Shirkey, P.E.
Section Administrator
Project Management*

G-716 Structure



G-716 Structure



G-716 Structure

•Design and Construction Schedule:

- Structure Type Evaluation: Complete
- Structure Flow Calculations : Complete
- Preliminary design due: December 22, 2014
- Final design package due: May 1, 2015
- Project out for Bid: July 1, 2015
- Governing Board Approval: September 10, 2015
- Notice to Proceed: August 1, 2015
- Project Substantial Completion: February 15, 2017
- Project Final Acceptance: March 15, 2017

G-716 Structure

Milestone	Compliance date	Status
Initiate design	9/30/2013	Complete
Complete design	7/30/2015	Pending
Initiate construction	1/31/2016	Pending
Complete construction	12/31/2018	Pending

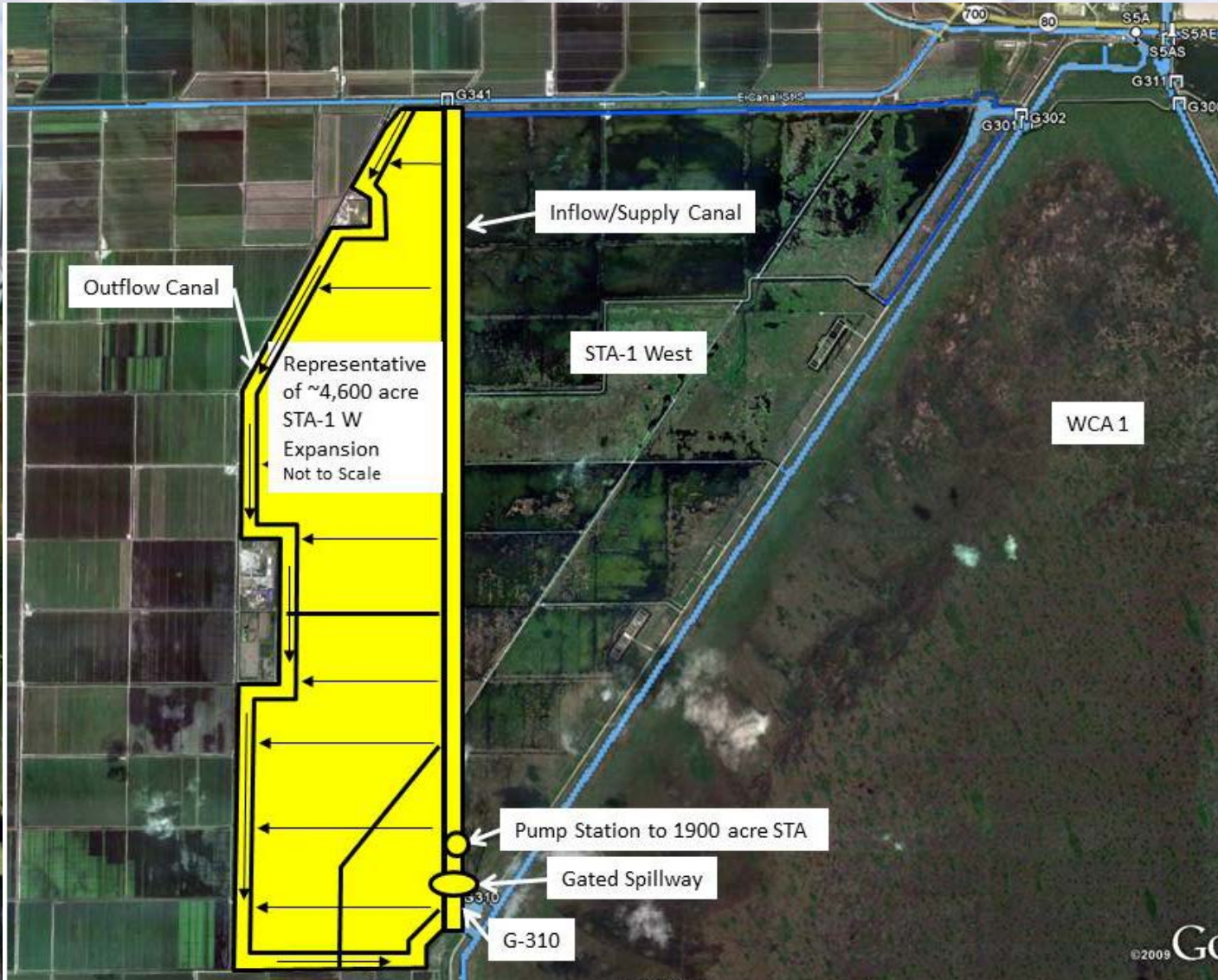
Quarterly Communications Meeting on the Long-Term Plan for Achieving Water Quality Goals for the Everglades Protection Area Tributary Basins

STA 1W Expansion # 1

August 27, 2014

*Alan Shirkey, P.E.
Section Administrator
Project Management*

STA 1W Expansion #1 – Location Map



STA 1W Expansion #1

- Design and Construction Schedule:
 - Hydraulic Study – Complete
 - Preliminary Design Plan Set – Complete
 - Preliminary Design Full Submittal – October 31, 2014
 - Intermediate Design Submittal – February 27, 2015
 - Final Design Submittal – June 2, 2015
 - Final Design TRB – June 10, 2015
 - Corrected Final/RTA Design Submittal – July 17, 2015
 - Governing Board – January 14, 2016
 - NTP – January 31, 2016
 - Substantial Completion – September 30, 2018
 - Final Completion – December 31, 2018

Milestones

Milestone	Compliance date	Status
Complete land acquisition	9/30/2013	Complete
Initiate design	9/30/2013	Complete
Submit state and federal permits	7/30/2014	Complete
Complete design	7/30/2015	Pending
Initiate construction	1/31/2016	Pending
Construction status report	3/1/2017	Pending
Construction status report	3/1/2018	Pending
Completion of construction	12/31/2018	Pending
Initial flooding and optimization complete	12/30/2020	Pending