

# Public Meeting on Long-Term Plan for Achieving Water Quality Goals for the Everglades Protection Area Tributary Basins

Lucine Dadrian, P.E.  
Section Administrator  
Project Management

May 26, 2017



G-538 Inflow Structure



All Cells: -33.5' NAVD

May 19, 2017



**G-539 Pump Station**



**Southeast Corner Cell 6  
G-538 Inflow Structure**



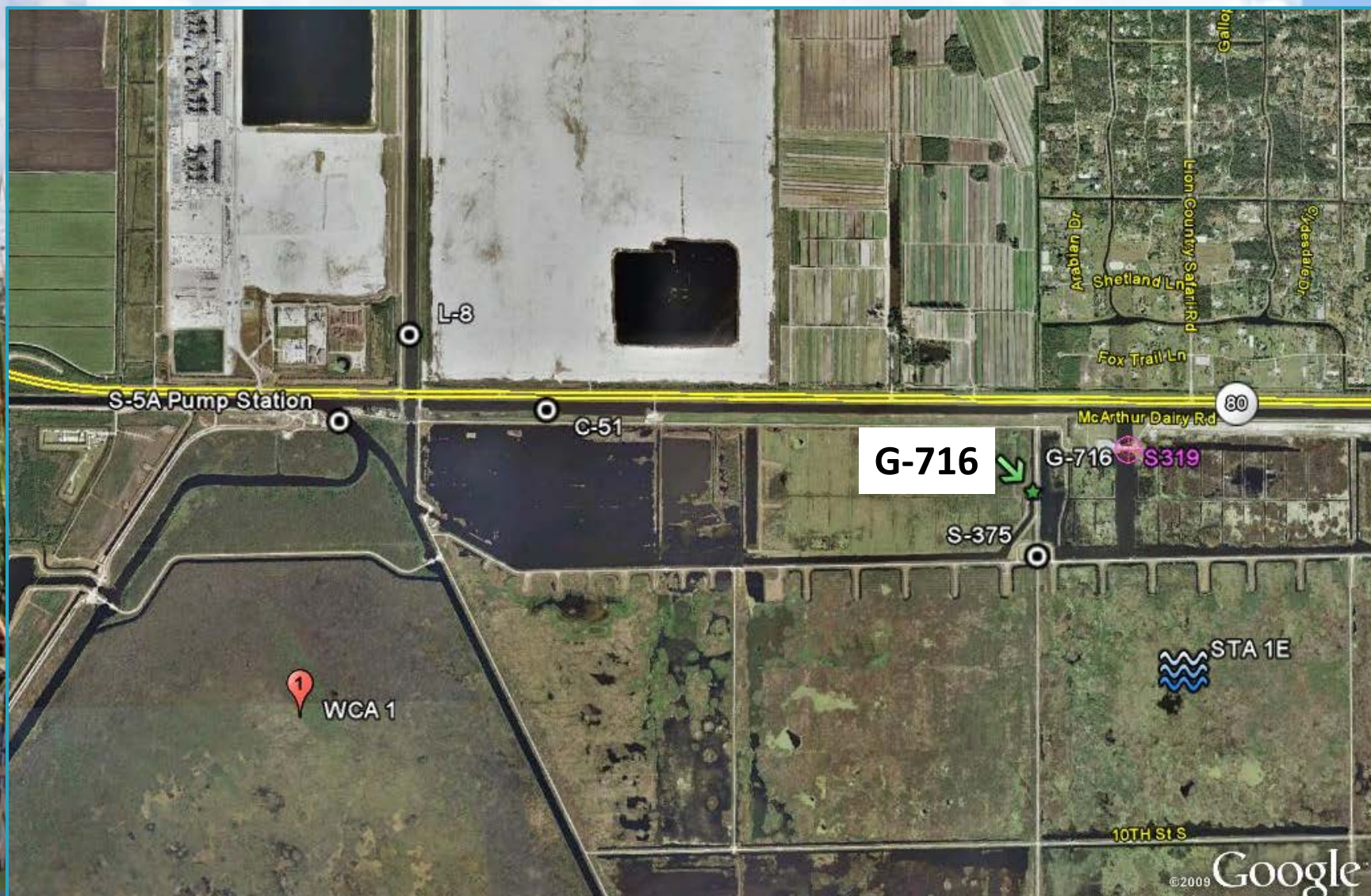
# L-8 Flow Equalization Basin

- **Governing Board Approval** Complete
- **Notice to Proceed** Complete
- **Preliminary Design (Revetment)** Complete
- **Preliminary Design (Pump and Inflow)** Complete
- **Final Design (Revetment)** Complete
- **Final Design (Pump and Inflow)** Complete
- **Revetment Construction** Complete
- **Substantial Completion (SC)** April 18, 2015
  - **Partial SC – Inflow Gate Structure** July 14, 2016
  - **Partial SC – Exterior Levees** August 22, 2016
- **Final Completion** October 15, 2015

# L-8 Flow Equalization Basin

Milestone	Deadline	Status
Submit state and federal permits	1/31/2014	Complete
Construction status report	3/1/2014	Complete
Construction status report	3/1/2015	Complete
Completion of construction	12/31/2016	Pending
Long term operations commence	12/31/2022	Pending

# S-375 Expansion (G-716)





# S-375 Expansion (G-716)



Looking North

# S-375 Expansion (G-716)



Looking West

# S-375 Expansion (G-716)



Looking East

# S-375 Expansion (G-716)

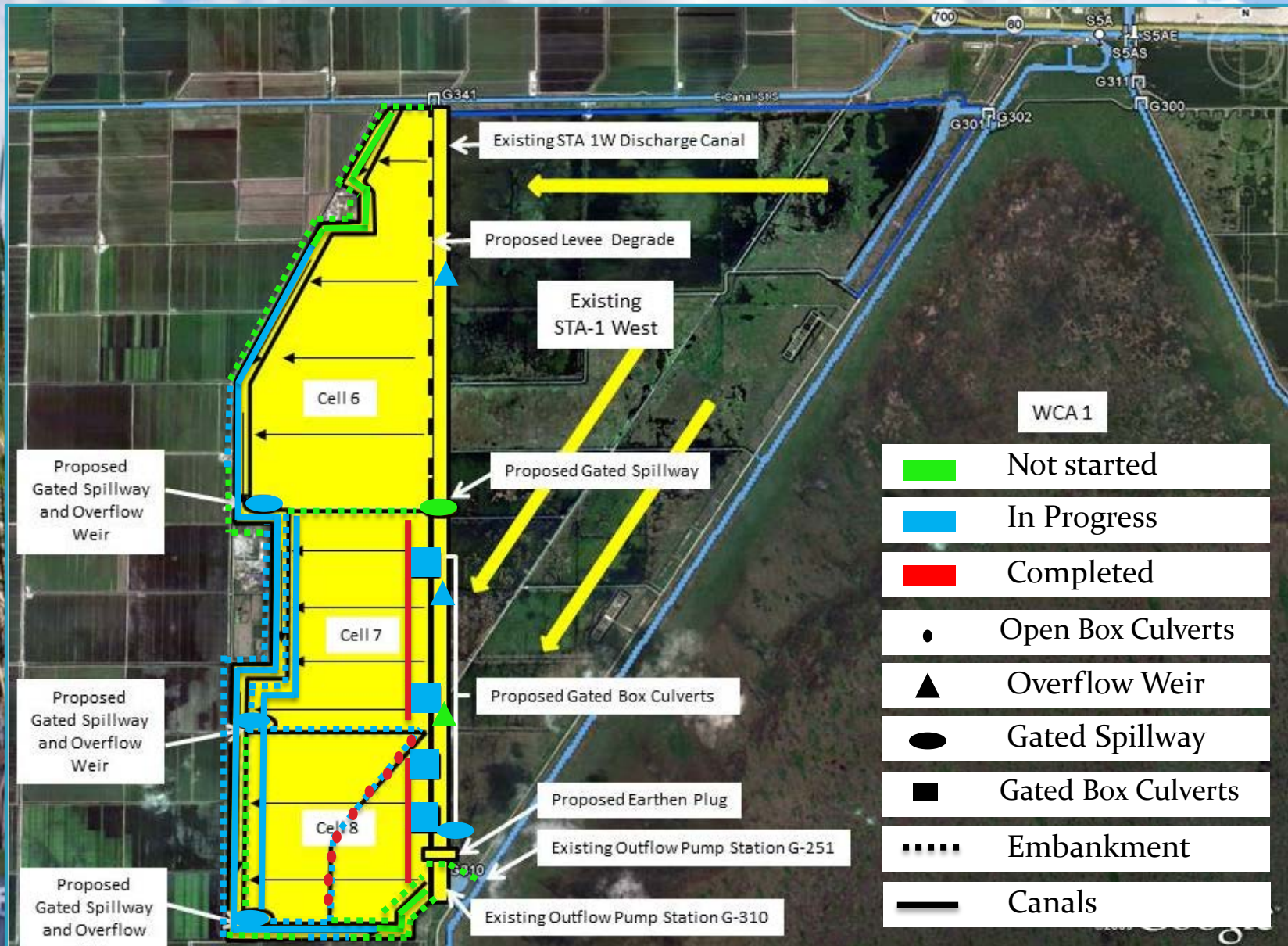
## Design and Construction Schedule

- **Structure Type Evaluation** **Complete**
- **Structure Flow Calculations** **Complete**
- **Preliminary Design** **Complete**
- **Final Design** **Complete**
- **Governing Board Approval** **Complete**
- **Notice to Proceed** **Complete**
- **Substantial Completion** **Complete**
- **Final Completion** **June 6, 2017**

# S-375 Expansion (G-716)

Milestone	Deadline	Status
Initiate design	9/30/2013	Complete
Complete design	7/30/2015	Complete
Initiate construction	1/31/2016	Complete
Completion of construction	12/31/2018	Complete

# STA-1W Expansion #1



# STA-1W Expansion #1



**Canal and Embankment Construction**

# STA-1W Expansion #1



**G-728 & G-733B Construction**



# STA-1W Expansion #1



**G-727A Overflow Weir Construction**

# STA-1W Expansion #1

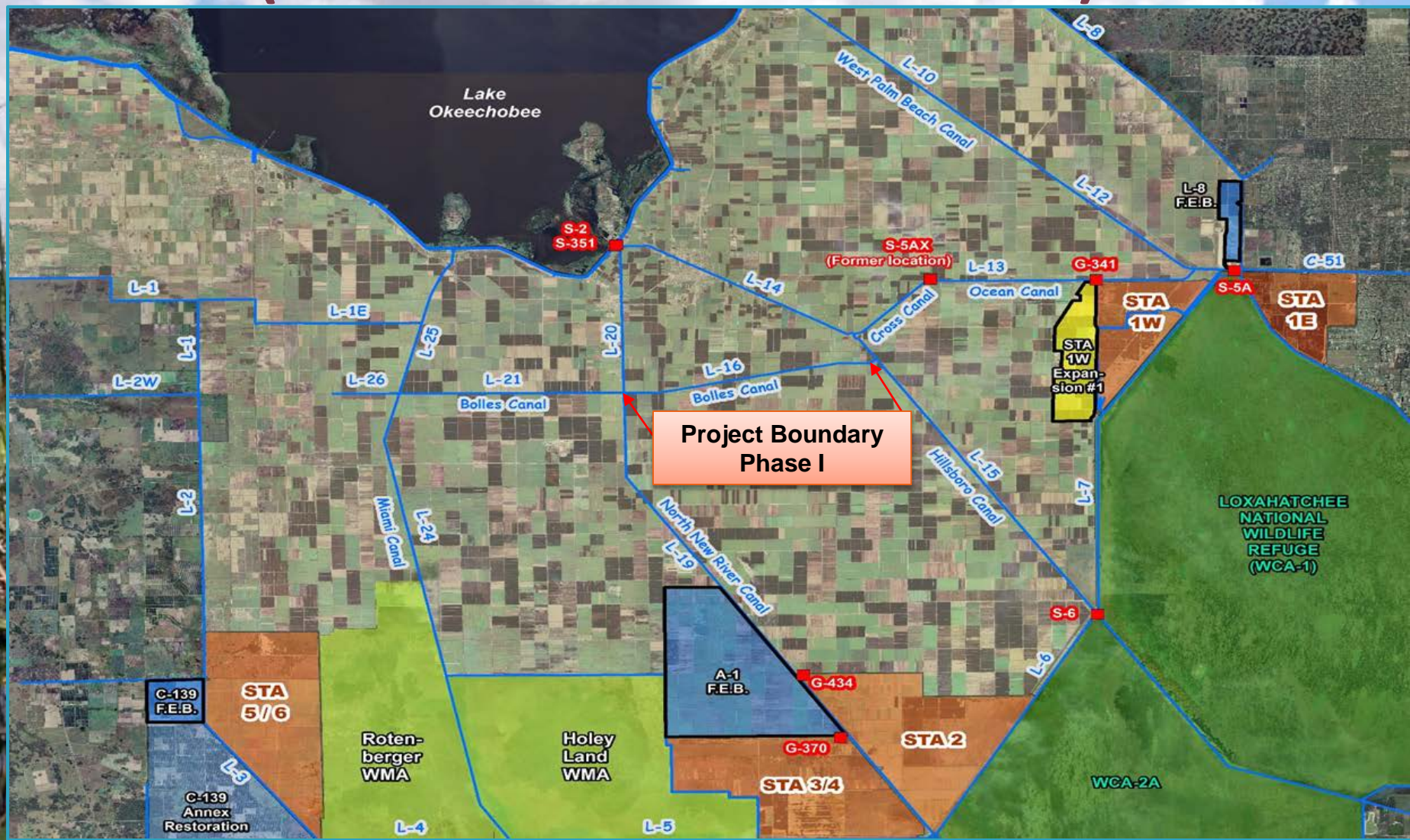
## Design and Construction Schedule

- **Hydraulic Study** Complete
- **Preliminary Design** Complete
- **Intermediate Design** Complete
- **Final Design** Complete
- **Governing Board Approval** Complete
- **Notice to Proceed** Complete
- **Substantial Completion** September 20, 2018
- **Final Completion** December 14, 2018

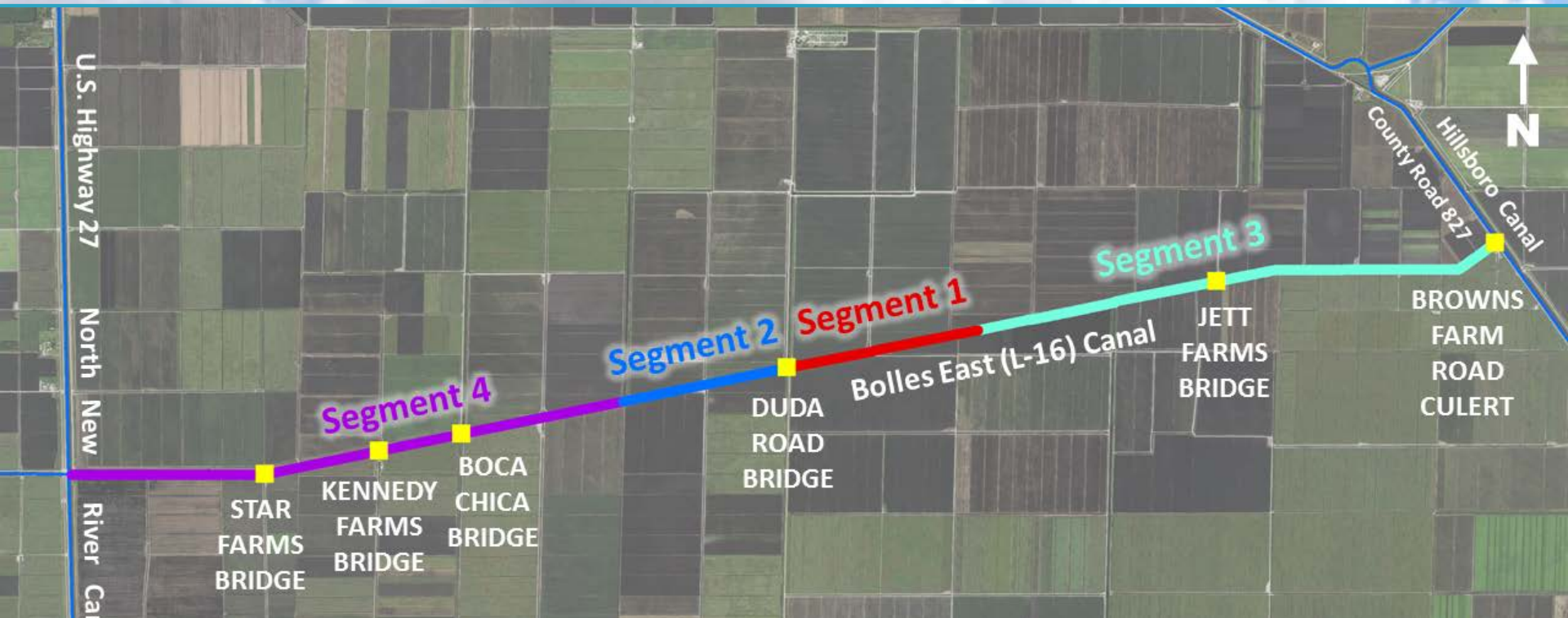
# STA-1W Expansion #1

Milestone	Deadline	Status
Complete land acquisition	9/30/2013	Complete
Initiate design	9/30/2013	Complete
Submit state and federal permits	7/30/2014	Complete
Complete design	7/30/2015	Complete
Initiate construction	1/31/2016	Complete
Construction status report	3/1/2017	Complete
Construction status report	3/1/2018	Pending
Completion of construction	12/31/2018	Pending
Initial flooding and optimization complete	12/30/2020	Pending

# G-341 Related Conveyance Improvements (Phase 1 - Bolles East Canal)



# G-341 Related Conveyance Improvements (Phase 1 - Bolles East Canal)

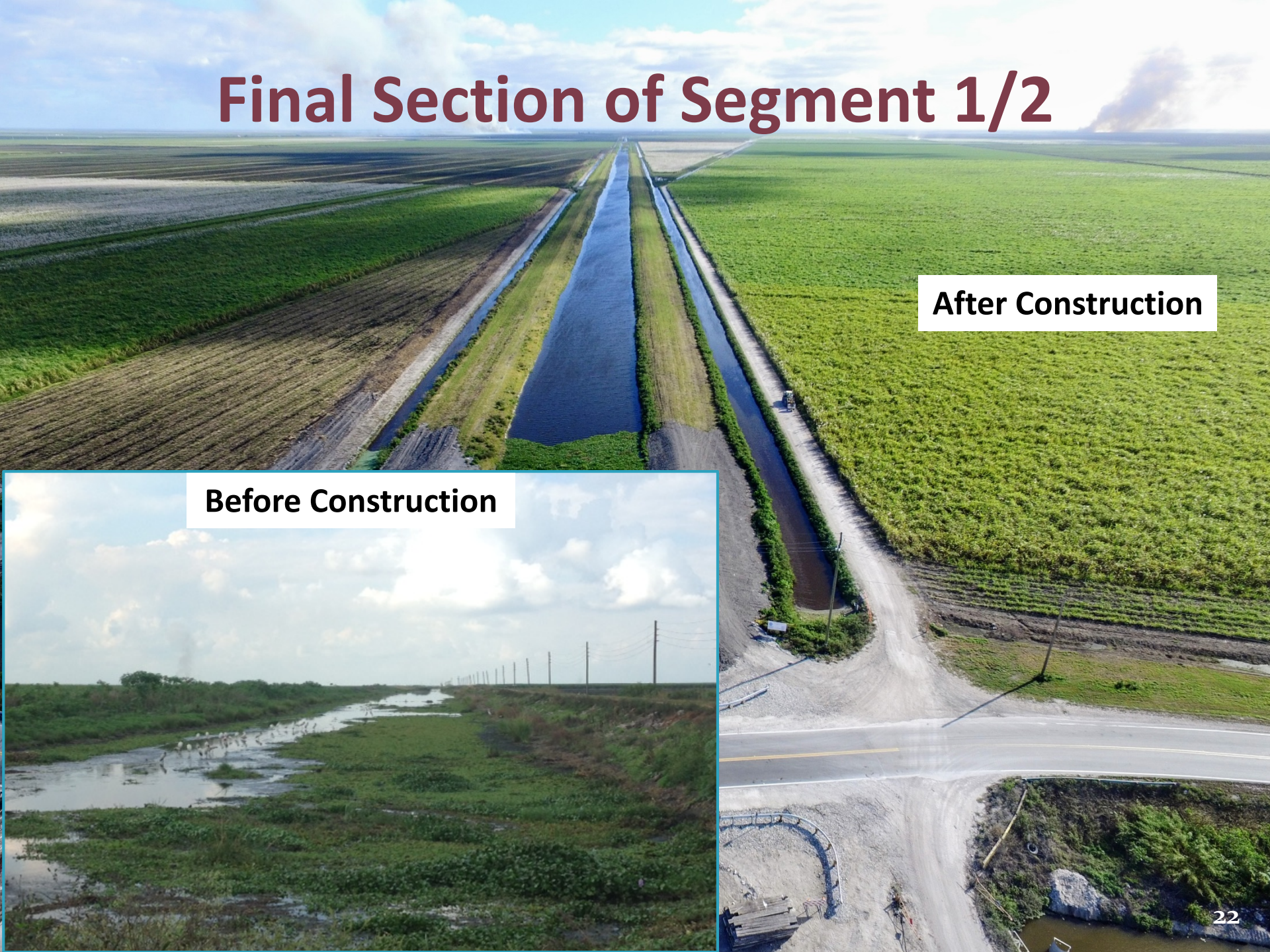


- **Segment 3** - Consists of 3.3 miles of the eastern end of the Bolles Canal. Design completed in April 2017. Construction awarded at May GB to Kemron Environmental
- **Segment 4** – Design of remaining 3.5 miles of the western end of the Bolles Canal
- **Bridge Replacements** – Starting coordination with landowners on remaining bridges

# Final Section of Segment 1/2

After Construction

Before Construction



# G-341 Related Conveyance Improvements (Phase 1/2 - Bolles East Canal)

Project Phase	Segment 1	Duda Bridge	Segment 2	Segment 2 Farm Road and Ditch	Segment 3	Segment 4
Design Completion	Dec 14, 2014	Jan 2016*	Sept 29, 2015	Sept 29, 2015	Mar 21, 2017	Start Jun 2017
Construction Notice to Proceed	Sept 14, 2015	Jun 2016*	Aug 16, 2016	Aug 16, 2016	Jun 2017	TBD
Substantial Completion	Sept 13, 2016	Aug 2016*	Mar 31, 2017	Mar 31, 2017	TBD	TBD
Final Completion	Nov 12, 2016	Sept 2016*	May 30, 2017	May 30, 2017	TBD	TBD
(*) Cost-share with Duda						

# G-341 Related Conveyance Improvements

Milestone	Deadline	Status
Complete land acquisition	9/30/2021	Pending
Initiate Design	10/1/2020	Complete
Submit state and federal permits	8/1/2021	Complete
Complete design	7/31/2022	Pending
Initiate construction	11/30/2022	Complete
Construction status report	3/1/2023	Pending
Construction status report	3/1/2024	Pending
Completion of construction	12/31/2024	Pending



# Restoration Strategies Project Summary

Project	Construction Completion Deadline	Status
A1 Flow Equalization Basin	7/30/2016	Completed 7/24/2016
S-5AS Modifications	9/30/2016	Completed 5/28/2016
L-8 Flow Equalization Basin	12/31/2016	Pending
L-8 Divide Structure (G-541)	9/30/2018	Completed 7/7/2016
S-375 Expansion (G-716)	12/31/2018	Completed 4/3/2017
STA-1W Expansion #1	12/31/2018	Pending
G-341 Related Conveyance Improvements	12/31/2024	Pending

# Questions