

Restoration Strategies: Design and Construction Update

Lucine Dadrian, P.E.
Section Administrator
Operations, Engineering and
Construction Division

15th Annual Public Meeting on the Long-Term
Plan for Achieving Water Quality Goals for
Everglades Protection Area Tributary Basins
February 23, 2018

L-8 Flow Equalization Basin



G-538 Inflow Structure



All Cells: -21.5' NGVD

Feb 9, 2018



All Cells: -21.5' NGVD

Feb 9, 2018

G-539 Pump Station

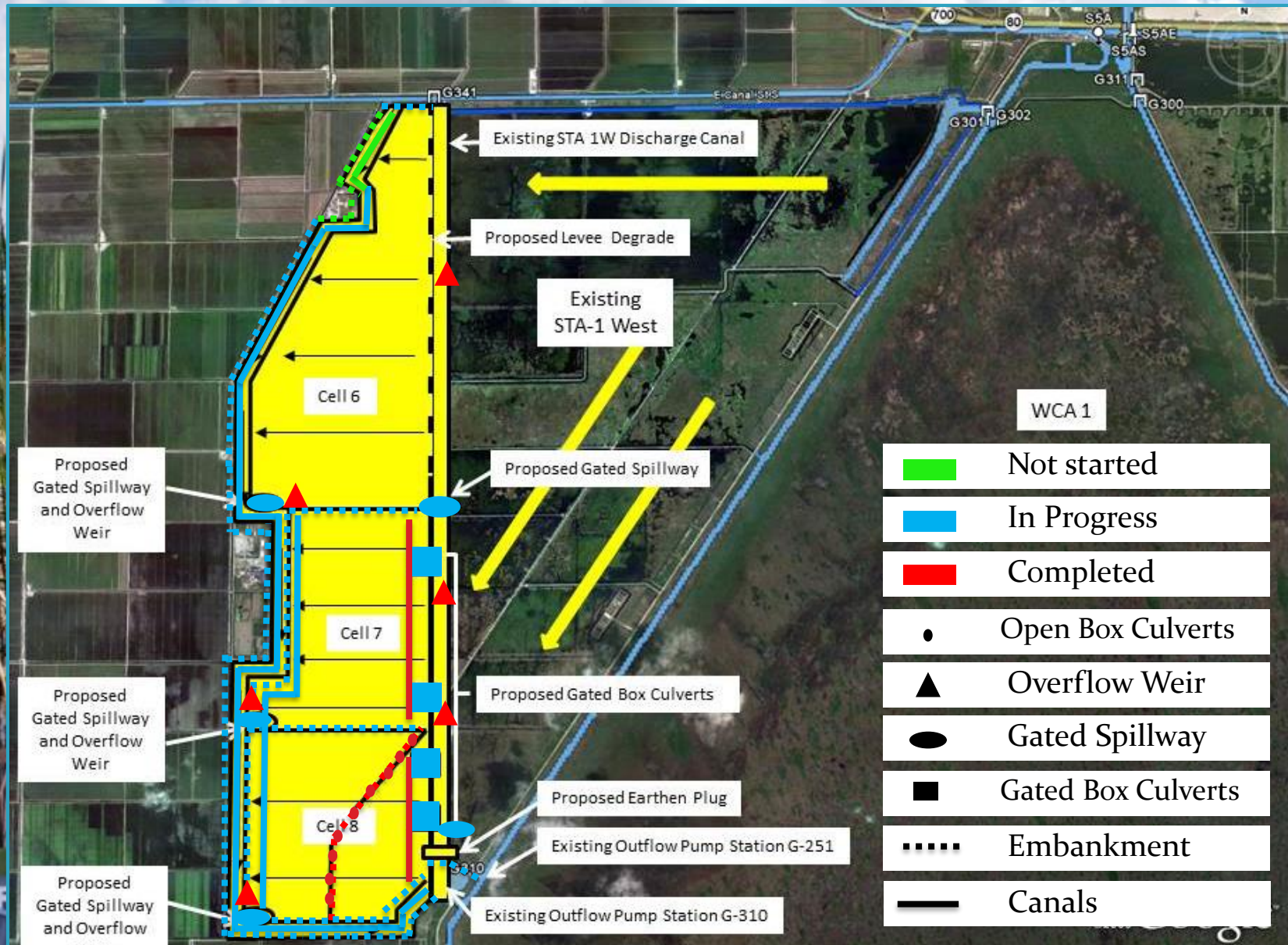
L-8 Flow Equalization Basin

- **Governing Board Approval** Complete
- **Notice to Proceed** Complete
- **Preliminary Design (Revetment)** Complete
- **Preliminary Design (Pump and Inflow)** Complete
- **Final Design (Revetment)** Complete
- **Final Design (Pump and Inflow)** Complete
- **Revetment Construction** Complete
- **Substantial Completion** Jun 19, 2017
- **Final Completion** Dec 18, 2017

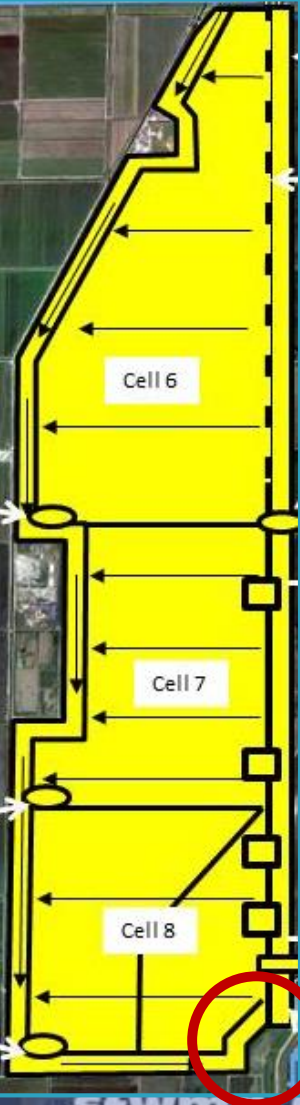
L-8 Flow Equalization Basin

| Milestone | Deadline | Status |
|----------------------------------|------------|----------|
| Submit state and federal permits | 1/31/2014 | Complete |
| Construction status report | 3/1/2014 | Complete |
| Construction status report | 3/1/2015 | Complete |
| Completion of construction | 12/31/2016 | Complete |
| Long term operations commence | 12/31/2022 | Pending |

STA-1W Expansion #1

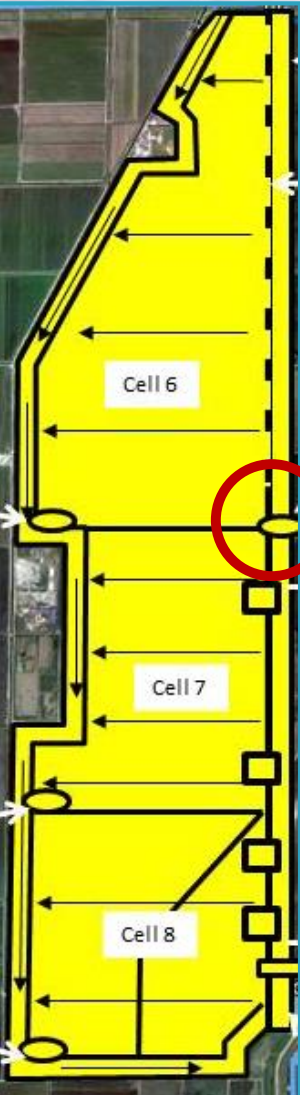


STA-1W Expansion #1



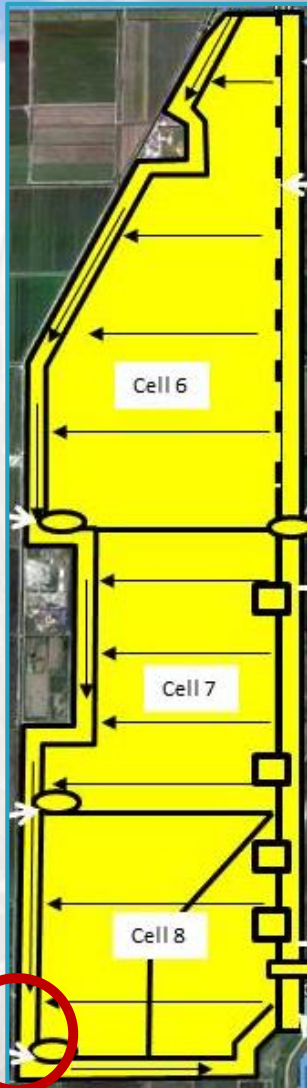
Canal and Embankment Construction

STA-1W Expansion #1



G-729 Construction

STA-1W Expansion #1



G-734, G-735C, & West Levees and Canals Construction

STA-1W Expansion #1

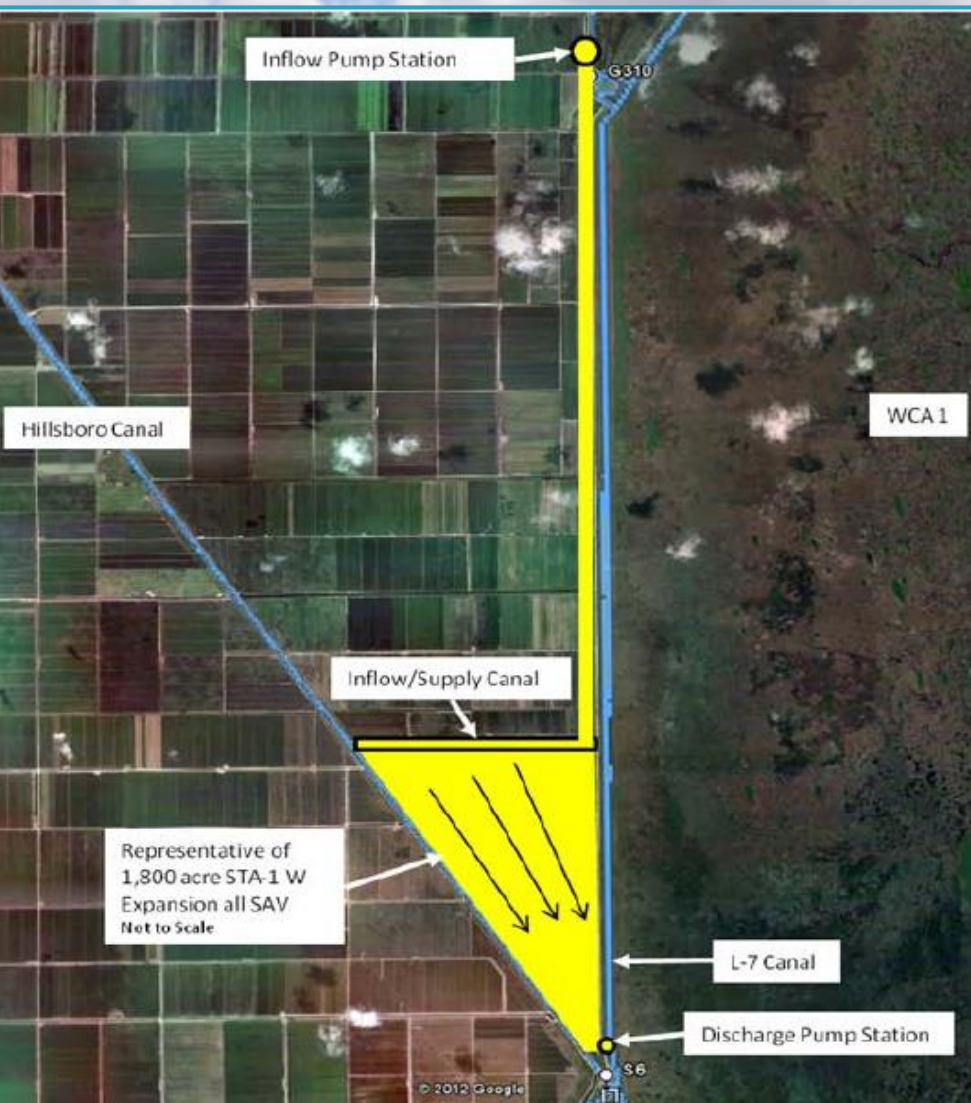
Design and Construction Schedule

- **Hydraulic Study** Complete
- **Preliminary Design** Complete
- **Intermediate Design** Complete
- **Final Design** Complete
- **Governing Board Approval** Complete
- **Notice to Proceed** Complete
- **Substantial Completion** September 20, 2018
- **Final Completion** December 14, 2018

STA-1W Expansion #1

| Milestone | Deadline | Status |
|--|------------|----------|
| Complete land acquisition | 9/30/2013 | Complete |
| Initiate design | 9/30/2013 | Complete |
| Submit state and federal permits | 7/30/2014 | Complete |
| Complete design | 7/30/2015 | Complete |
| Initiate construction | 1/31/2016 | Complete |
| Construction status report | 3/1/2017 | Complete |
| Construction status report | 3/1/2018 | Pending |
| Completion of construction | 12/31/2018 | Pending |
| Initial flooding and optimization complete | 12/30/2020 | Pending |

STA-1W Expansion #2



| Project | Acres | Acres of Effective Treatment |
|-------------------|-------|------------------------------|
| Overall Expansion | 6,727 | 5,900+ |
| Expansion #1 | 4,600 | 4,300 |
| Expansion #2 | 2,127 | 1,600+ |

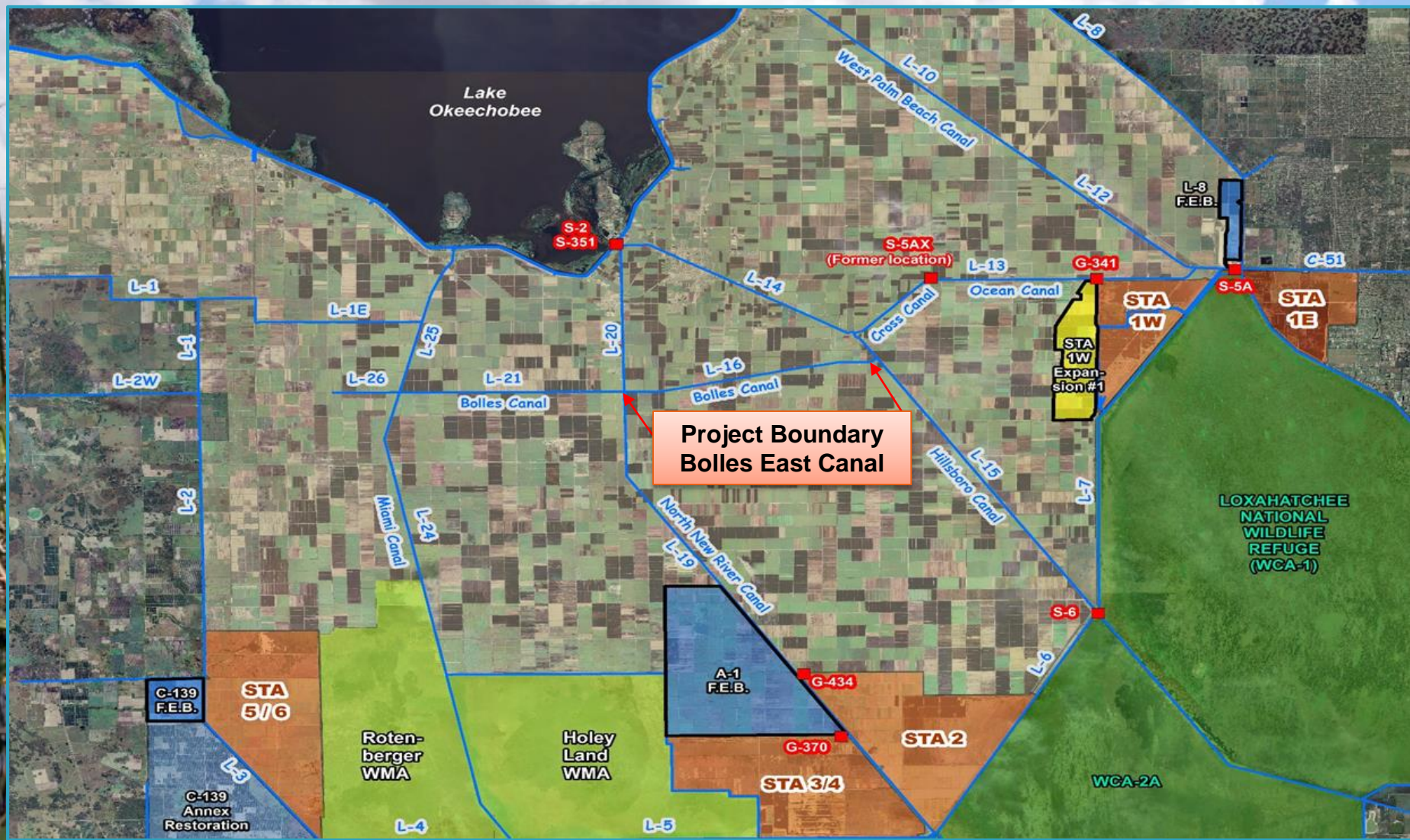
STA-1W Expansion #2



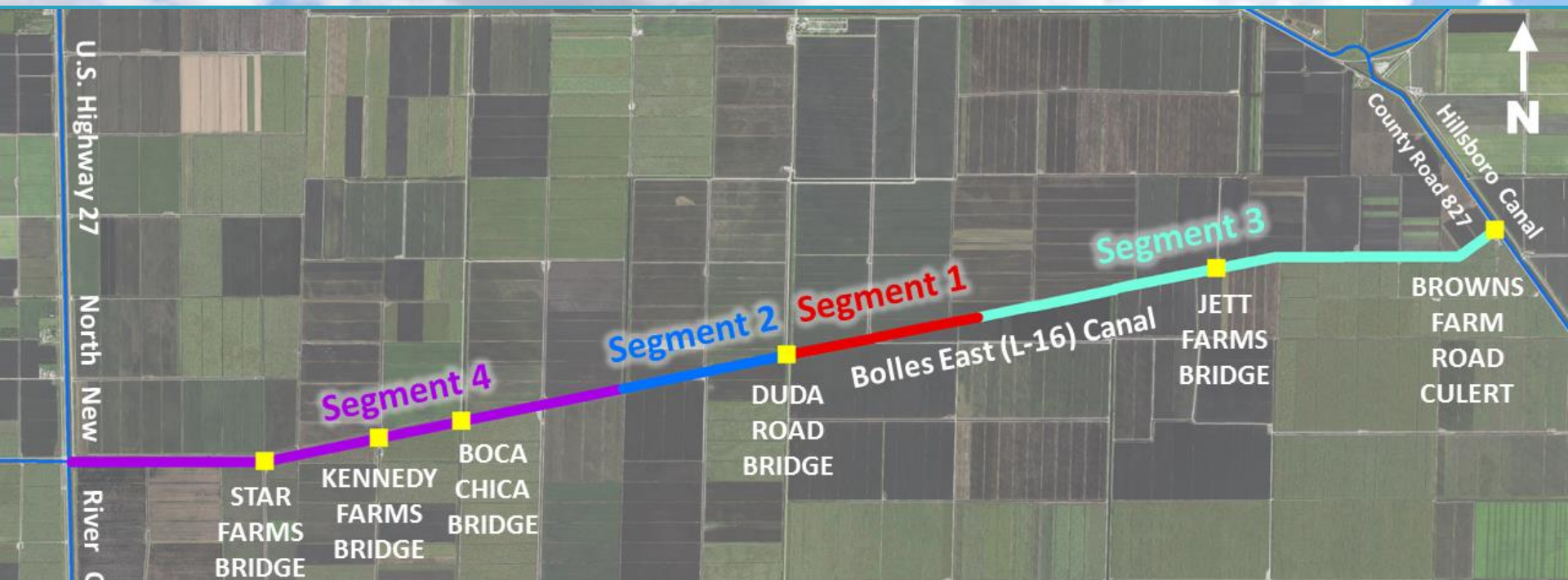
STA-1W Expansion #2

| Milestone | Deadline | Status |
|--|------------|----------|
| Complete land acquisition | 3/31/2018 | Complete |
| Initiate design | 10/01/2018 | Pending |
| Submit state and federal permits | 8/01/2019 | Pending |
| Complete design | 7/31/2020 | Pending |
| Initiate construction | 11/30/2020 | Pending |
| Construction status report | 3/1/2021 | Pending |
| Construction status report | 3/1/2022 | Pending |
| Completion of construction | 12/31/2022 | Pending |
| Initial flooding and optimization complete | 12/31/2024 | Pending |

G-341 Related Conveyance Improvements Bolles East Canal



G-341 Related Conveyance Improvements Bolles East Canal



- **Segment 3** - Consists of 3.3 miles of the eastern end of the Bolles Canal. Design completed in April 2017. Construction awarded at May 2017 GB to Kemron Environmental. Construction is on-going.
- **Segment 4** – Design of remaining 3.5 miles of the western end of the Bolles Canal
- **Bridge Replacements** – Working with Landowners on incorporating bridge replacements in Segments 3 and 4. Reduced the western number of bridges from 3 to 2 bridges. Star Farms and Kennedy will share a bridge.

Final Section of Segments 1 and 2



After Construction

Before Construction



Excavation of Segment 3



G-341 Related Conveyance Improvements Bolles East Canal

| Project Phase | Segment 1 | Duda Bridge* | Segment 2 | Segment 3 | Segment 4 |
|--------------------------------|---------------|--------------|---------------|--------------|----------------|
| Design Completion | Dec 14, 2014 | Jan 2016 | Sept 29, 2015 | Mar 21, 2017 | Start Jun 2017 |
| Construction Notice to Proceed | Sept 14, 2015 | Jun 2016 | Aug 16, 2016 | Nov 20, 2017 | TBD |
| Substantial Completion | Sept 13, 2016 | Aug 2016 | Mar 31, 2017 | Dec 19, 2018 | TBD |
| Final Completion | Nov 12, 2016 | Dec 2016 | May 30, 2017 | Feb 17, 2019 | TBD |
| (*) Cost-share with Duda | | | | | |

G-341 Related Conveyance Improvements

| Milestone | Deadline | Status |
|----------------------------------|------------|----------|
| Complete land acquisition | 9/30/2021 | Pending |
| Initiate Design | 10/1/2020 | Complete |
| Submit state and federal permits | 8/1/2021 | Complete |
| Complete design | 7/31/2022 | Pending |
| Initiate construction | 11/30/2022 | Complete |
| Construction status report | 3/1/2023 | Pending |
| Construction status report | 3/1/2024 | Pending |
| Completion of construction | 12/31/2024 | Pending |

Restoration Strategies Project Summary

| Project | Construction Completion Deadline | Status |
|---------------------------------------|----------------------------------|----------------------|
| A-1 Flow Equalization Basin | 7/30/2016 | Completed 7/24/2015 |
| S-5AS Modifications | 9/30/2016 | Completed 5/28/2016 |
| L-8 Flow Equalization Basin | 12/31/2016 | Completed 06/21/2017 |
| L-8 Divide Structure (G-541) | 9/30/2018 | Completed 7/7/2016 |
| S-375 Expansion (G-716) | 12/31/2018 | Completed 4/3/2017 |
| STA-1W Expansion #1 | 12/31/2018 | Pending |
| G-341 Related Conveyance Improvements | 12/31/2024 | Pending |

Questions