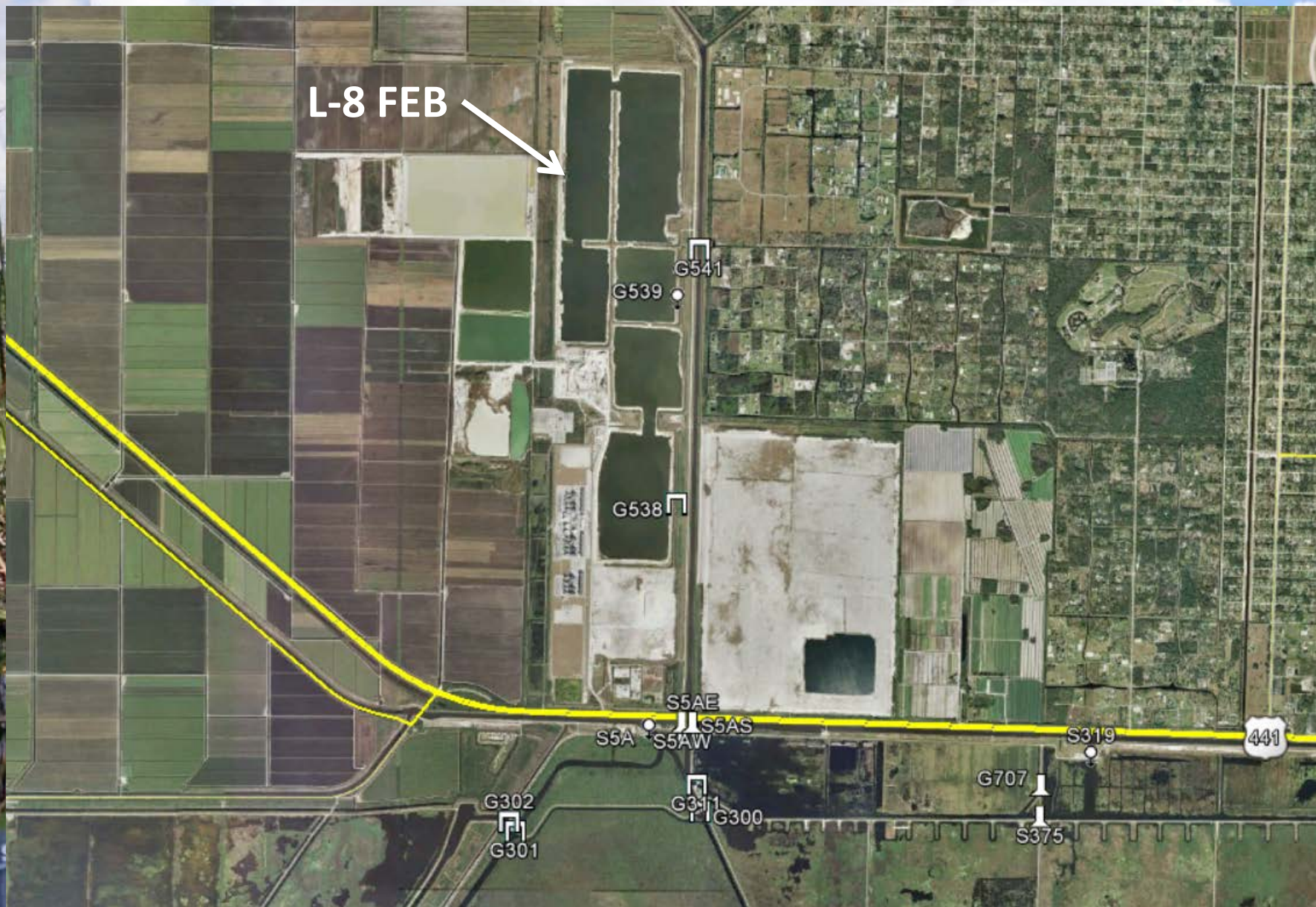


Quarterly Communications Meeting Long-Term Plan for Achieving Water Quality Goals for the Everglades Protection Area Tributary Basins

Lucine Dadrian, P.E.
Section Administrator
Project Management

September 2016

L-8 Flow Equalization Basin



G-538 Inflow Structure



All Cells: -6.3' NAVD

September 13, 2016



G-539 Pump Station

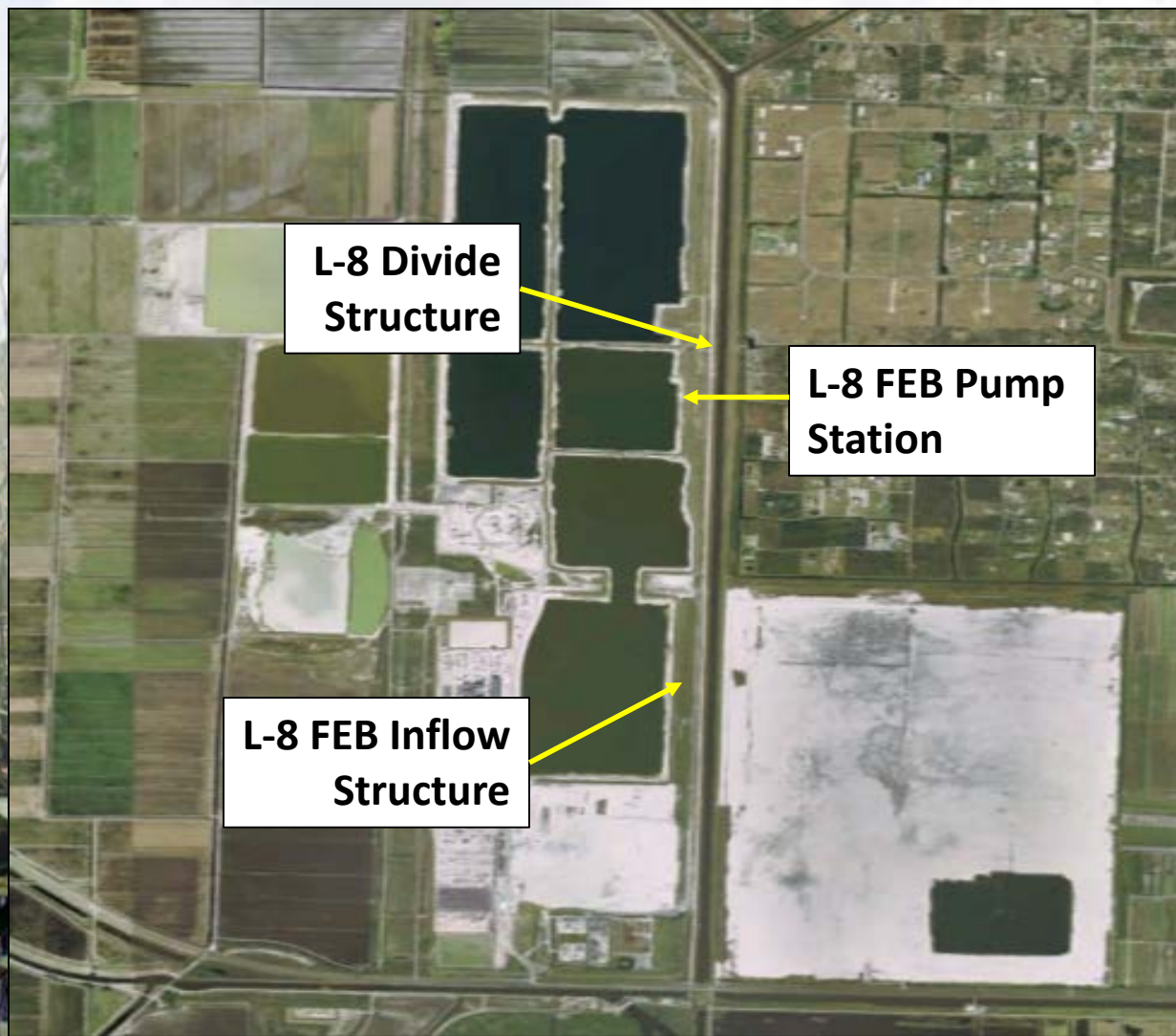
L-8 Flow Equalization Basin

- **Governing Board Approval** Complete
- **Notice to Proceed** Complete
- **Preliminary Design (Revetment)** Complete
- **Preliminary Design (Pump and Inflow)** Complete
- **Final Design (Revetment)** Complete
- **Final Design (Pump and Inflow)** Complete
- **Revetment Construction** Complete
- **Substantial Completion** April 18, 2015
- **Final Completion** October 15, 2015

L-8 Flow Equalization Basin

Milestone	Compliance Date	Status
Submit state and federal permits	1/31/2014	Complete
Construction status report	3/1/2014	Complete
Construction status report	3/1/2015	Complete
Completion of construction	12/31/2016	Pending
Long term operations	12/31/2022	Pending

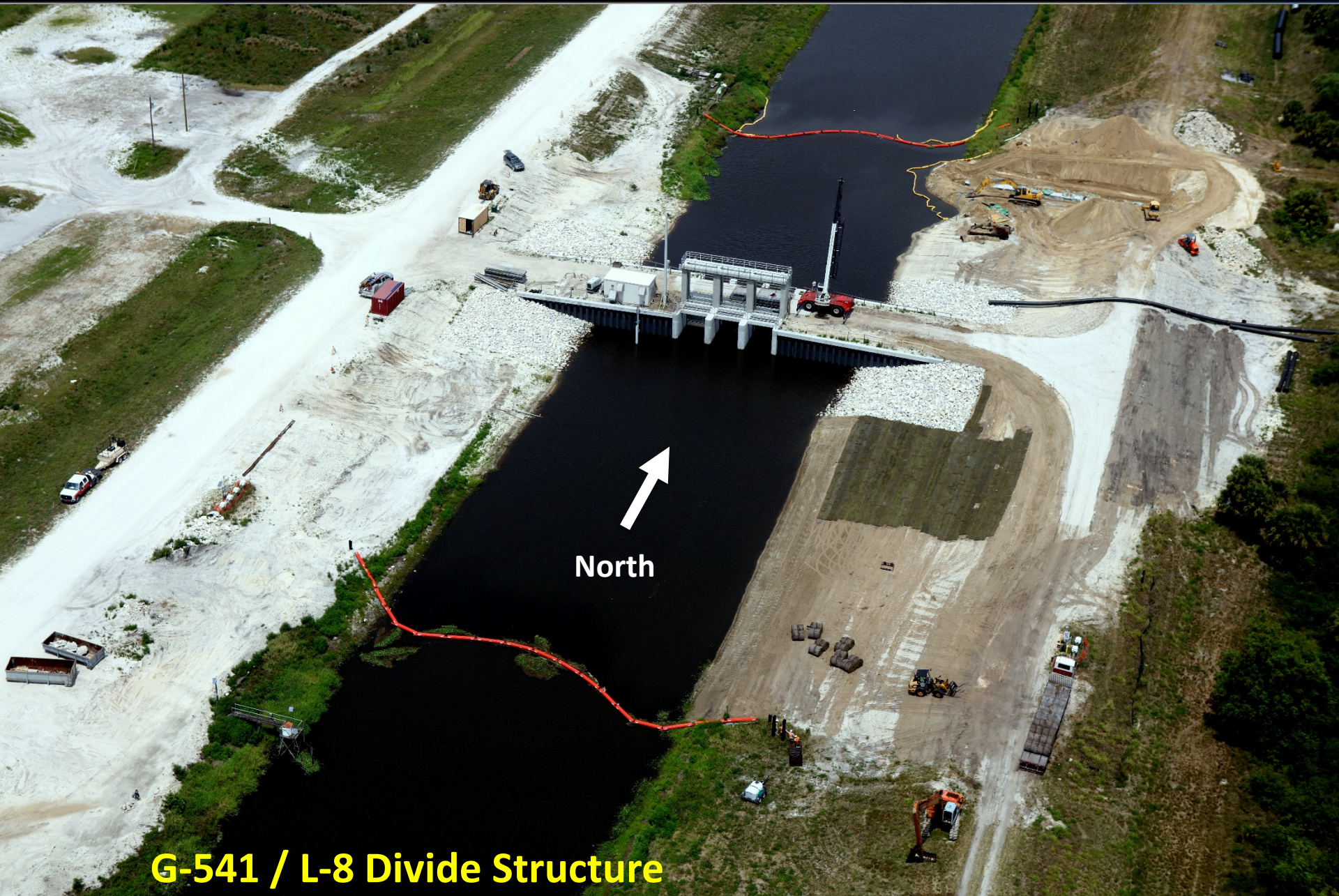
G-541 / L-8 Divide Structure



**L-8 Divide
Structure**

**L-8 FEB Pump
Station**

**L-8 FEB Inflow
Structure**



North

G-541 / L-8 Divide Structure

G-541 / L-8 Divide Structure

Design and Construction Schedule

- Design Complete
- Notice to Proceed October 15, 2014
- Substantial Completion March 29, 2016
- Final Completion May 28, 2016

Construction Activities:

- Bypass Channel Complete
- Slab and Walls Complete
- Service Bridge Pour Complete
- Control Building Complete
- Gate Installation Complete
- Electrical In progress

Milestones

Milestone	Compliance Date	Status
Initiate design	10/1/2012	Complete
Complete design	9/30/2014	Complete
Initiate construction	10/1/2016	Complete
Complete construction	9/30/2018	Pending

S-5AS Divide Structure



S-5AS Divide Structure



S-5AS Divide Structure

Design and Construction Schedule

- **Comprehensive Fluid Dynamic Model** Complete
- **Structure Stability Review** Complete
- **Preliminary Design** Complete
- **Final Design** Complete
- **Governing Board Approval** Complete
- **Notice to Proceed** Complete
- **Substantial Completion** Complete
- **Final Acceptance** Complete

Milestones

Milestone	Compliance Date	Status
Initiate design	10/1/2012	Complete
Complete design	9/30/14	Complete
Initiate construction	10/1/14	Complete
Complete construction	9/30/16	Complete

G-716 Structure



G-716 Structure



G-716 Structure



G-716 Structure

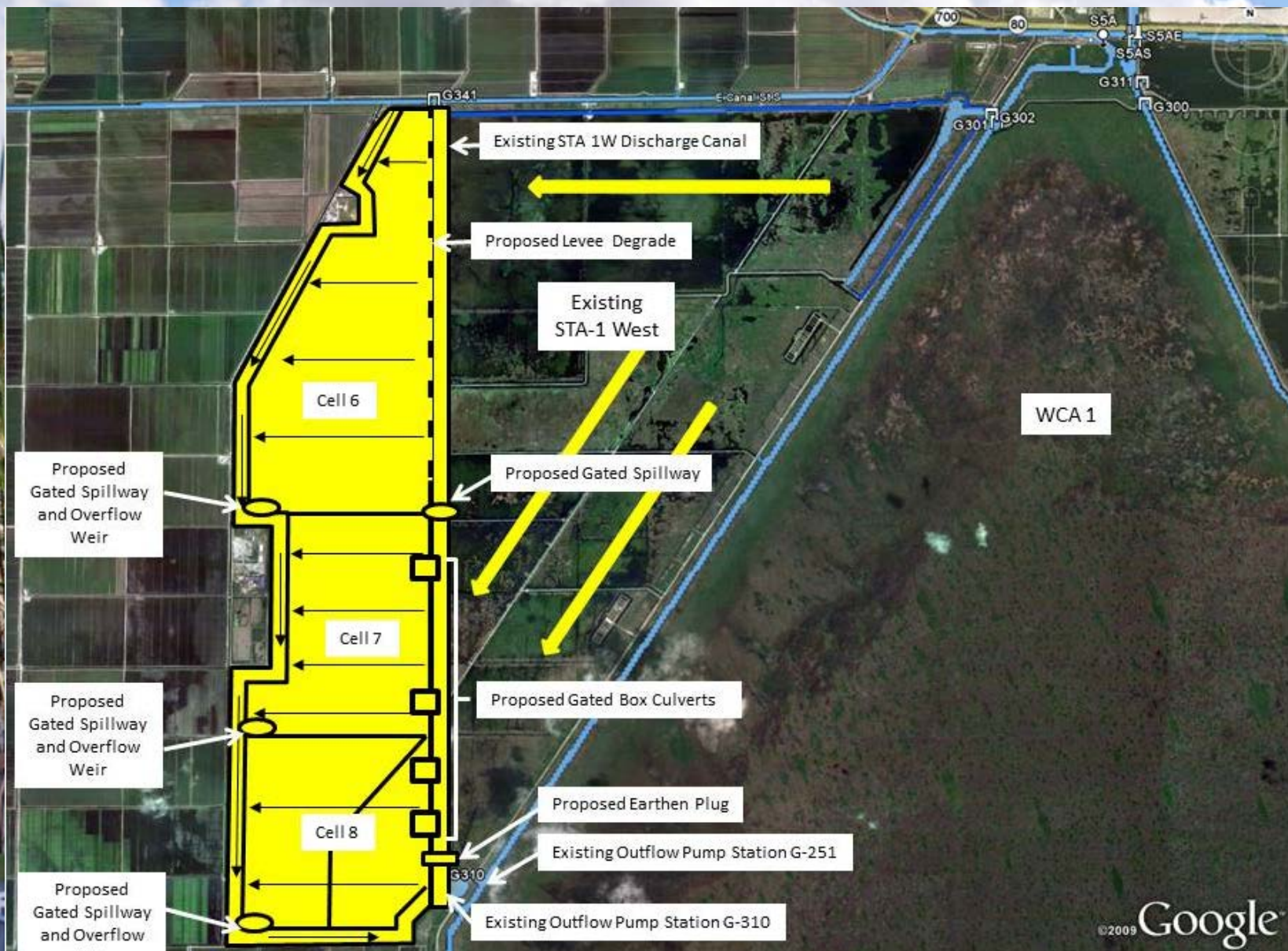
Design and Construction Schedule

- **Structure Type Evaluation** **Complete**
- **Structure Flow Calculations** **Complete**
- **Preliminary Design** **Complete**
- **Final Design** **Complete**
- **Governing Board Approval** **Complete**
- **Notice to Proceed** **Complete**
- **Substantial Completion** **April 7, 2017**
- **Final Acceptance** **June 6, 2017**

Milestones

Milestone	Compliance Date	Status
Initiate design	9/30/2013	Complete
Complete design	7/30/2015	Complete
Initiate construction	1/31/2016	Complete
Complete construction	12/31/2018	Pending

STA 1W Expansion #1



STA 1W Expansion #1



Select Fill Crushing Process

New Discharge Canal Excavation



STA 1W Expansion #1



G-733B Permanent Sheet Pile Installation

STA 1W Expansion #1

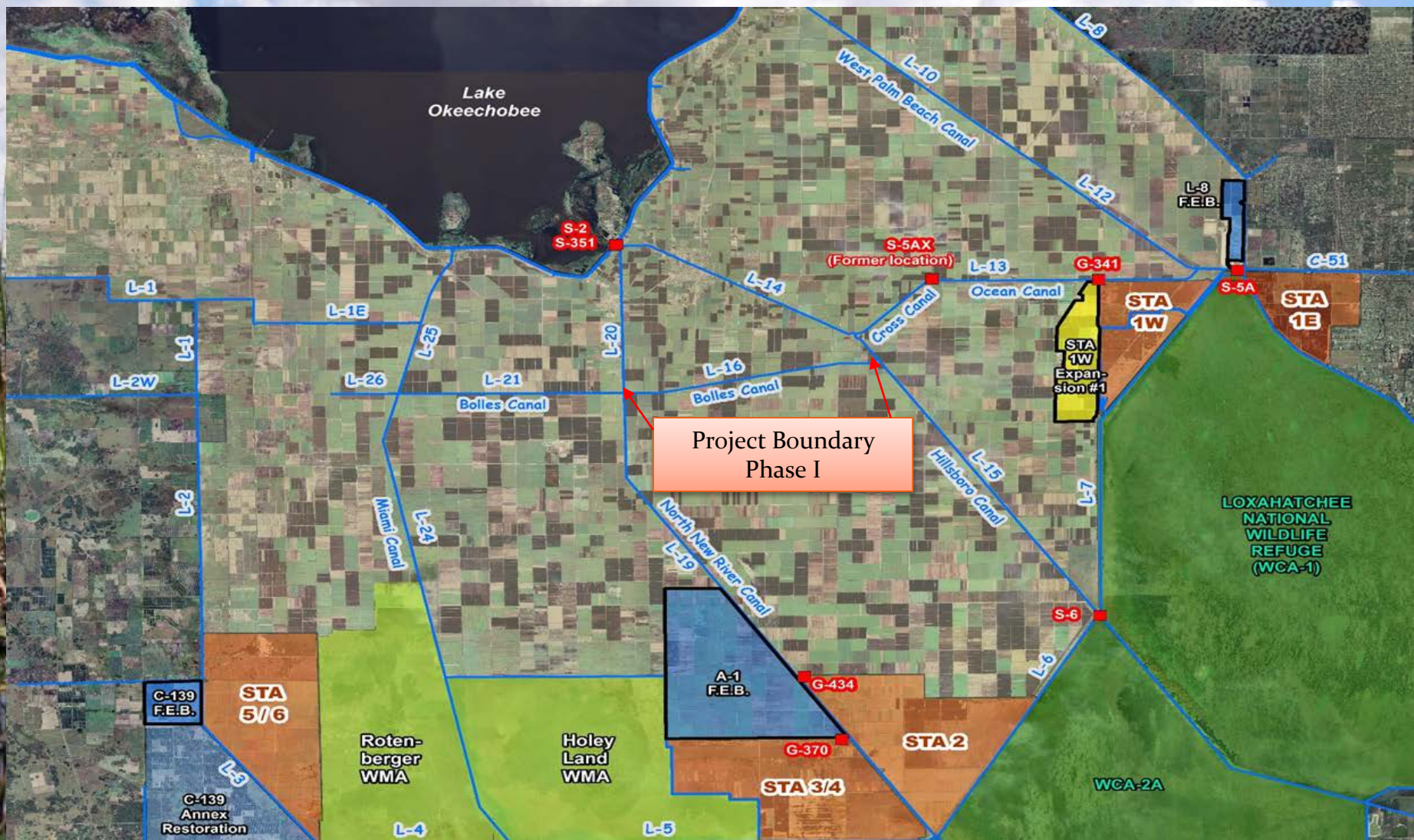
Design and Construction Schedule

- **Hydraulic Study** Complete
- **Preliminary Design** Complete
- **Intermediate Design** Complete
- **Final Design** Complete
- **Governing Board Approval** Complete
- **Notice to Proceed** Complete
- **Substantial Completion** September 20, 2018
- **Final Completion** December 14, 2018

Milestones

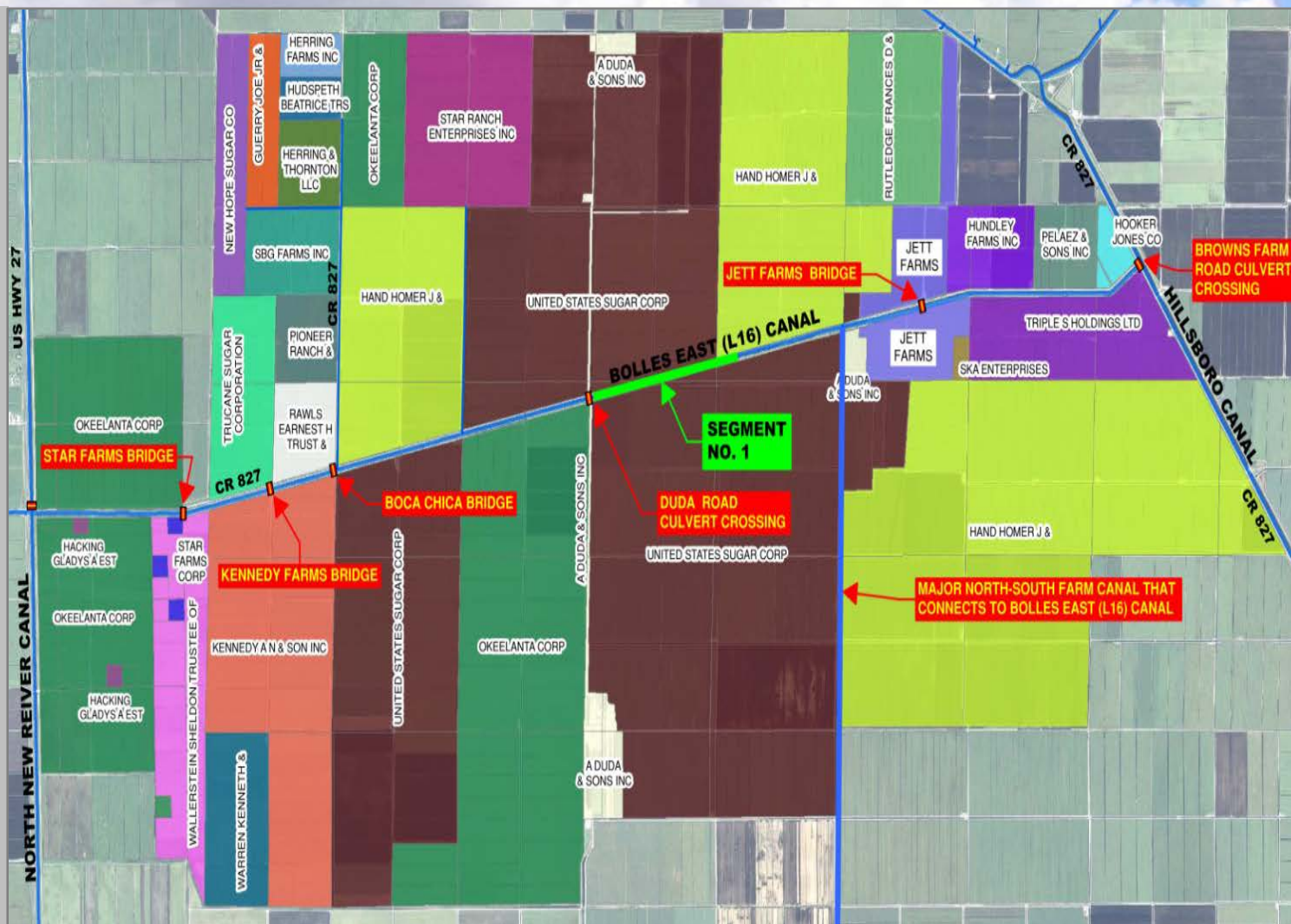
Milestone	Compliance Date	Status
Complete land acquisition	9/30/2013	Complete
Initiate design	9/30/2013	Complete
Submit state and federal permits	7/30/2014	Complete
Complete design	7/30/2015	Complete
Initiate construction	1/31/2016	Complete
Construction status report	3/1/2017	Pending
Construction status report	3/1/2018	Pending
Completion of construction	12/31/2018	Pending
Initial flooding and optimization complete	12/30/2020	Pending

RS-G341 Bolles Canal Phase I



RS-G341 Bolles Canal Phase I Segment 1

- Segment 1 Construction Completion – September 2016



Final Section of Segment 1

Before Construction



After Construction



New Canal Cross Section



RS-G341 Bolles Canal Phase I Duda Bridge

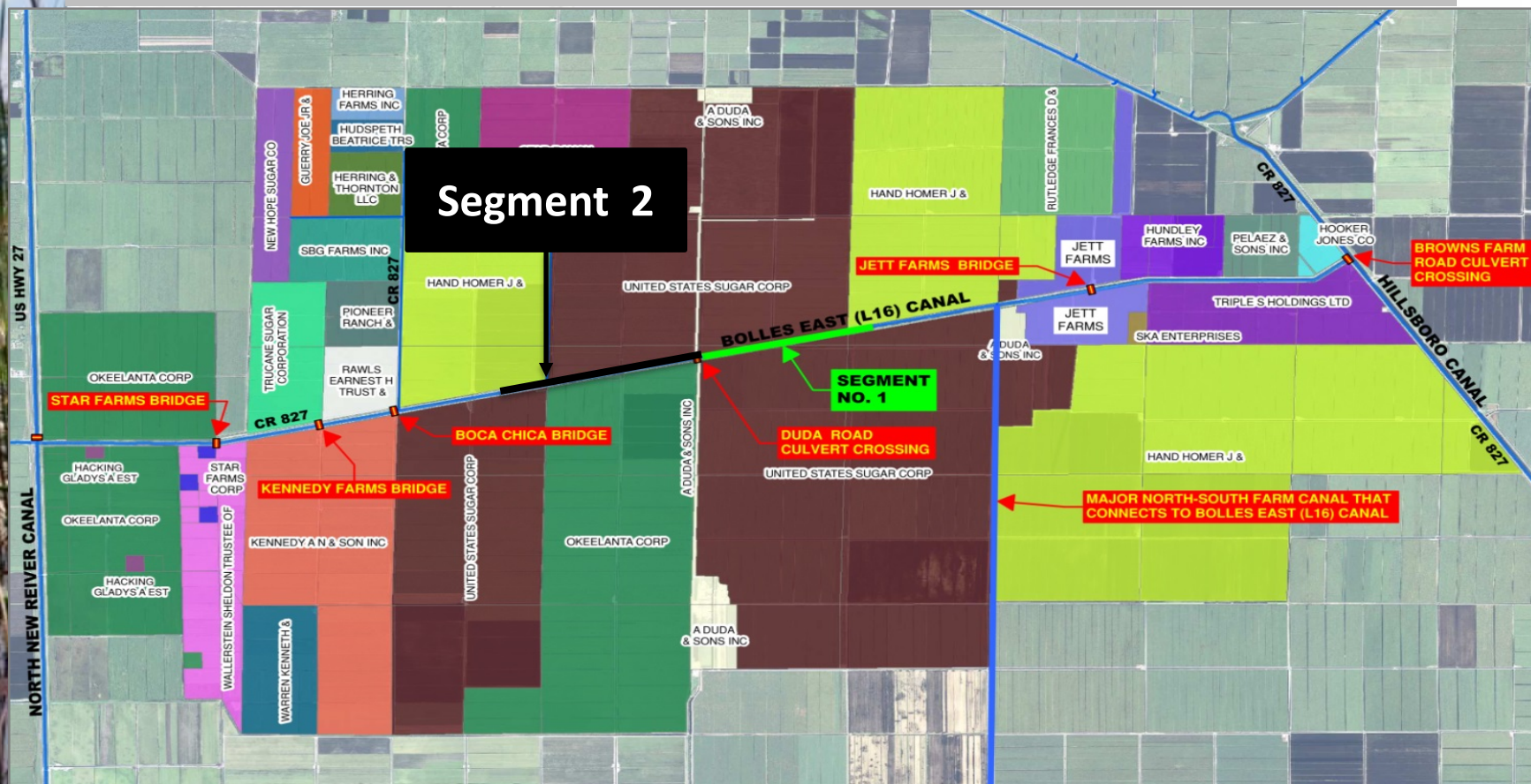
- Duda Bridge Replacement Cooperative Agreement Executed – February 2016
- District Cost Share NTE - \$1.1 M
- Permits Obtained – April/May 2016
- Design Completed – May 2016
- Construction Start – May 30, 2016
- Construction Completion – September 2016



RS-G341 Bolles Canal Phase I Segment 2

Segment 2 – Construction Kick Off – July 2016

Construction Completion – May 2017



RS-G341 Bolles Canal-Phase I Segment 3

- Segment 3 - Consists of design of remaining 3.5 miles of the eastern end of the Bolles Canal
- Segment 3 Design Completion – April 2016
- Future Work – will consist of the remaining 3.5 miles of the western end of the Bolles Canal



RS-G341 Bolles Canal Phase I

Design and Construction Schedule Phase 1

- | | |
|------------------------------------|-------------------------------|
| • Design of Segment 1 | Complete |
| • Design of Segment 2 | Complete |
| • Duda Bridge Agreement | Complete - February 2016 GB |
| • Duda Bridge Design | Complete - May 2016 |
| • Segment 1 Notice to Proceed | Complete - September 14, 2015 |
| • Segment 1 Substantial Completion | Complete - September 13, 2016 |
| • Segment 1 Final Completion | Complete - November 12, 2016 |
| • Segment 2 Notice to Proceed | July 2016 |
| • Segment 2 Substantial Completion | March 31, 2017 |
| • Segment 2 Final Completion | May 30, 2017 |

Construction Activities Segment 1

- | | |
|---------------------------|---------------|
| • Farm Ditch | 100% Complete |
| • Farm Road | 95% Complete |
| • Blasting & Excavation | 100% Complete |
| • Duda Bridge Replacement | 95% Complete |

Milestones

Milestone	Compliance Date	Status
Complete land acquisition	9/30/2021	Pending
Initiate Design	1/15/2015	Complete
Submit state and federal permits	8/1/2021	Pending
Complete design	7/31/2022	Pending
Initiate construction	10/14/2015	Complete
Construction status report	3/1/2023	Pending
Construction status report	3/1/2024	Pending
Completion of construction	12/31/2024	Pending