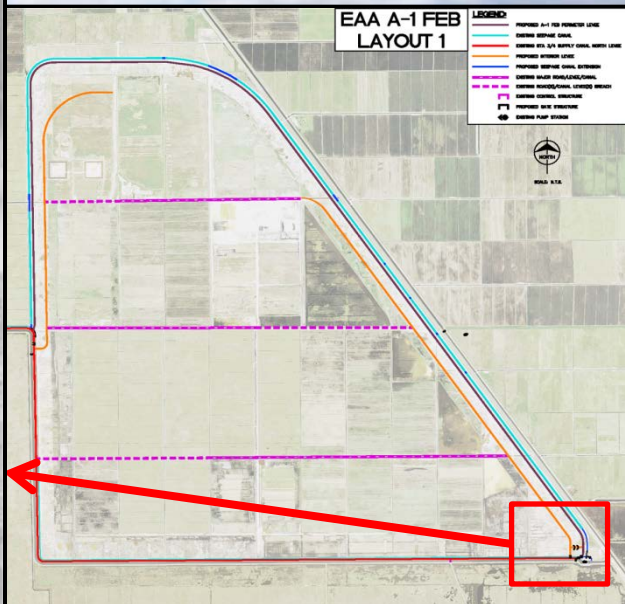
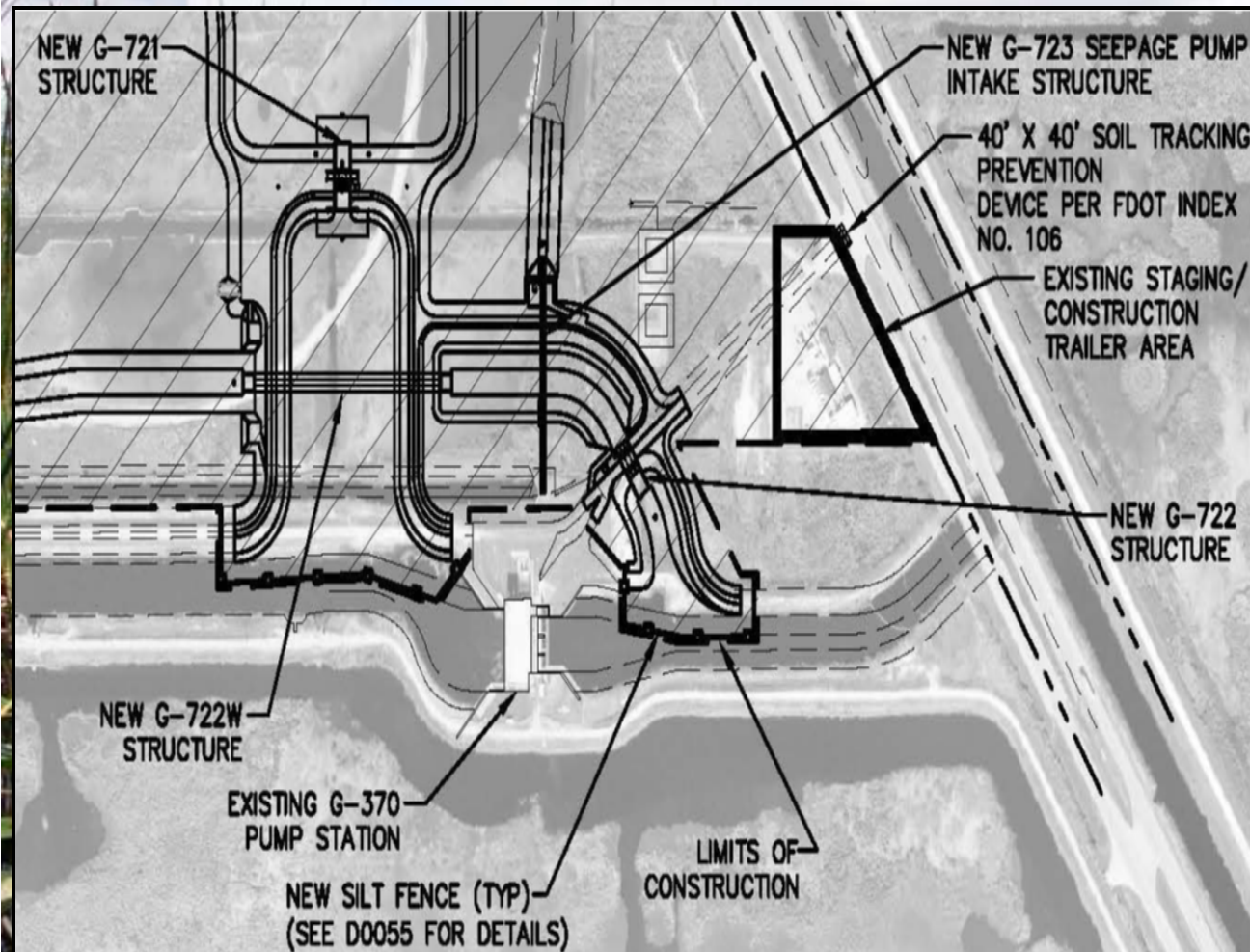


**Quarterly Communications Meeting on the Long-Term Plan for Achieving Water Quality Goals for the Everglades Protection Area Tributary Basins**  
**A-1 Flow Equalization Basin (FEB)**

May 2015

*Alan Shirkey, P.E.  
Section Administrator  
Project Management*

# A-1 FEB SE Corner





G-720 Inflow Structure  
& Tie-in Levee



East Perimeter Levee



EAA A1 Flow Equalization Basin  
Southeast viewing Northwest

G-724 Outflow Structure



G-723 Seepage Intake Structure



G-722 Outflow Culvert

## A-1 FEB

## Design and Construction Schedule:

- Preliminary Design Complete
- Intermediate Design Submittal Complete
- Final Design Submittal Complete
- Final Design TRB Complete
- Corrected Final/RTA Design Submittal Complete
- Governing Board Complete
- Notice to Proceed Complete
- Substantial Completion June 3, 2015
- Final Completion July 14, 2015

# Milestones

Milestone	Compliance date	Status
Initiate design	4/1/2012	Complete
Submit state and federal permits	12/1/2012	Complete
Design status report	3/1/2013	Complete
Complete design	8/1/2013	Complete
Initiate construction	6/30/2014	Complete
Construction status report	3/1/2015	Complete
Construction status report	3/1/2016	Pending
Completion of construction	7/30/2016	Pending
Initial flooding and optimization complete	7/29/2018	Pending

# Quarterly Communications Meeting on the Long-Term Plan for Achieving Water Quality Goals for the Everglades Protection Area Tributary Basins

## L-8 Flow Equalization Basin

May 2015

*Alan Shirkey, P.E.  
Section Administrator  
Project Management*

# Project Location







All Cells: -27.20' NAVD

# G-539 Pump Station



# G-539 Pump Station



# Design/Build Schedule

- **Governing Board Approval** Complete
- **NTP** Complete
- **Preliminary Design (Revetment)** Complete
- **Preliminary Design (Pump and Inflow)** Complete
- **Final Design (Revetment)** Complete
- **Final Design (Pump and Inflow)** Complete
- **Revetment Construction – Roller  
Compacted Concrete** Complete
- **Installation of Sod** Underway
- **Substantial Completion** **April 18, 2015**
- **Final Completion** **October 15, 2015**

# Milestones

Milestone	Compliance date	Status
Submit state and federal permits	1/31/2014	Complete
Construction status report	3/1/2014	Complete
Construction status report	3/1/2015	Complete
Completion of construction	12/31/2016	Pending
Long term operations	12/31/2022	Pending

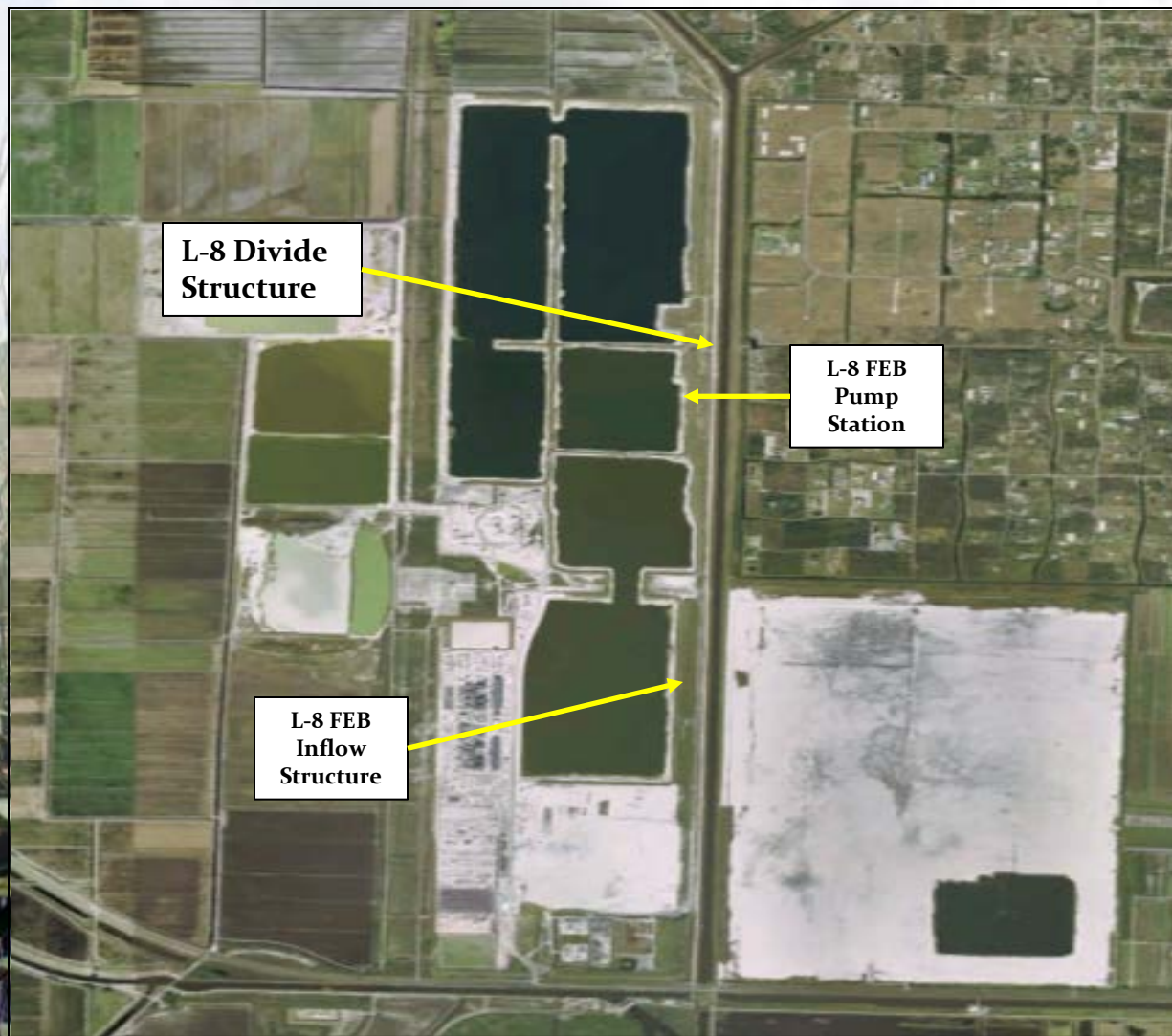
# Quarterly Communications Meeting on the Long-Term Plan for Achieving Water Quality Goals for the Everglades Protection Area Tributary Basins

## L-8 Divide Structure

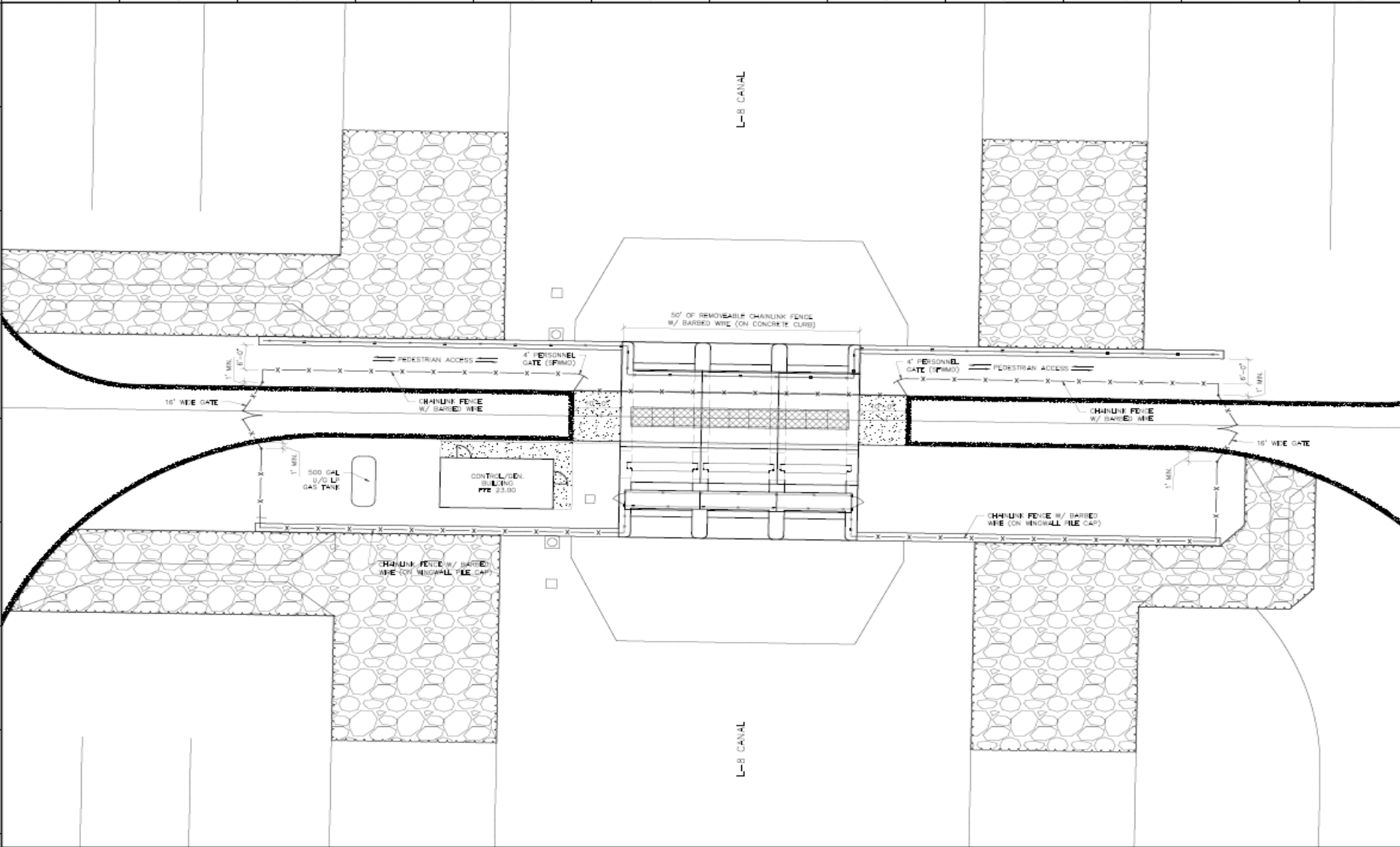
May 2015

*Alan Shirkey, P.E.  
Section Administrator  
Project Management*

# L-8 Divide Structure, G-541



# L-8 Divide Structure, G-541





# L-8 Divide Structure

**Design**

**Complete**

**Construction Schedule**

- **Notice to Proceed:** **October 15, 2014**
- **Project Substantial Completion:** **February 7, 2016**
- **Project Final Completion:** **April 7, 2016**

**Construction activities**

- **Bypass Channel:** **Complete**
- **Excavation of Subgrade:** **Complete**
- **Pre-drilling of Sheet Piles:** **Underway**

# Milestones

<b>Milestone</b>	<b>Compliance date</b>	<b>Status</b>
Initiate design	10/1/2012	Complete
Complete design	9/30/2014	Complete
Initiate construction	10/1/2016	Complete
Complete construction	9/30/2018	Pending

# L-8 Divide Structure

North



# Quarterly Communications Meeting on the Long-Term Plan for Achieving Water Quality Goals for the Everglades Protection Area Tributary Basins

## S-5AS Divide Structure

May 2015

*Alan Shirkey, P.E.  
Section Administrator  
Project Management*

# S-5AS Divide Structure



# S-5AS Divide Structure



# S-5AS Divide Structure



# S-5AS Divide Structure





# S-5AS Divide Structure

## •Design and Construction Schedule:

- Comprehensive Fluid Dynamic Model: Complete
- Structure Stability Review: Complete
- Preliminary design due: Complete
- Final design package due: Complete
- Project out for Bid: Complete
- Governing Board Approval : Complete
- Notice to Proceed : Complete
- Project Substantial Completion : Feb 28, 2016
- Project Final Acceptance: April 28, 2016

# S-5AS Divide Structure Milestones

<b>Milestone</b>	<b>Compliance date</b>	<b>Status</b>
Initiate design	10/1/2012	Complete
Complete design	9/30/14	Complete
Initiate construction	10/1/14	Complete
Complete construction	9/30/16	Pending

# Quarterly Communications Meeting on the Long-Term Plan for Achieving Water Quality Goals for the Everglades Protection Area Tributary Basins

## G-716 Structure

May 2015

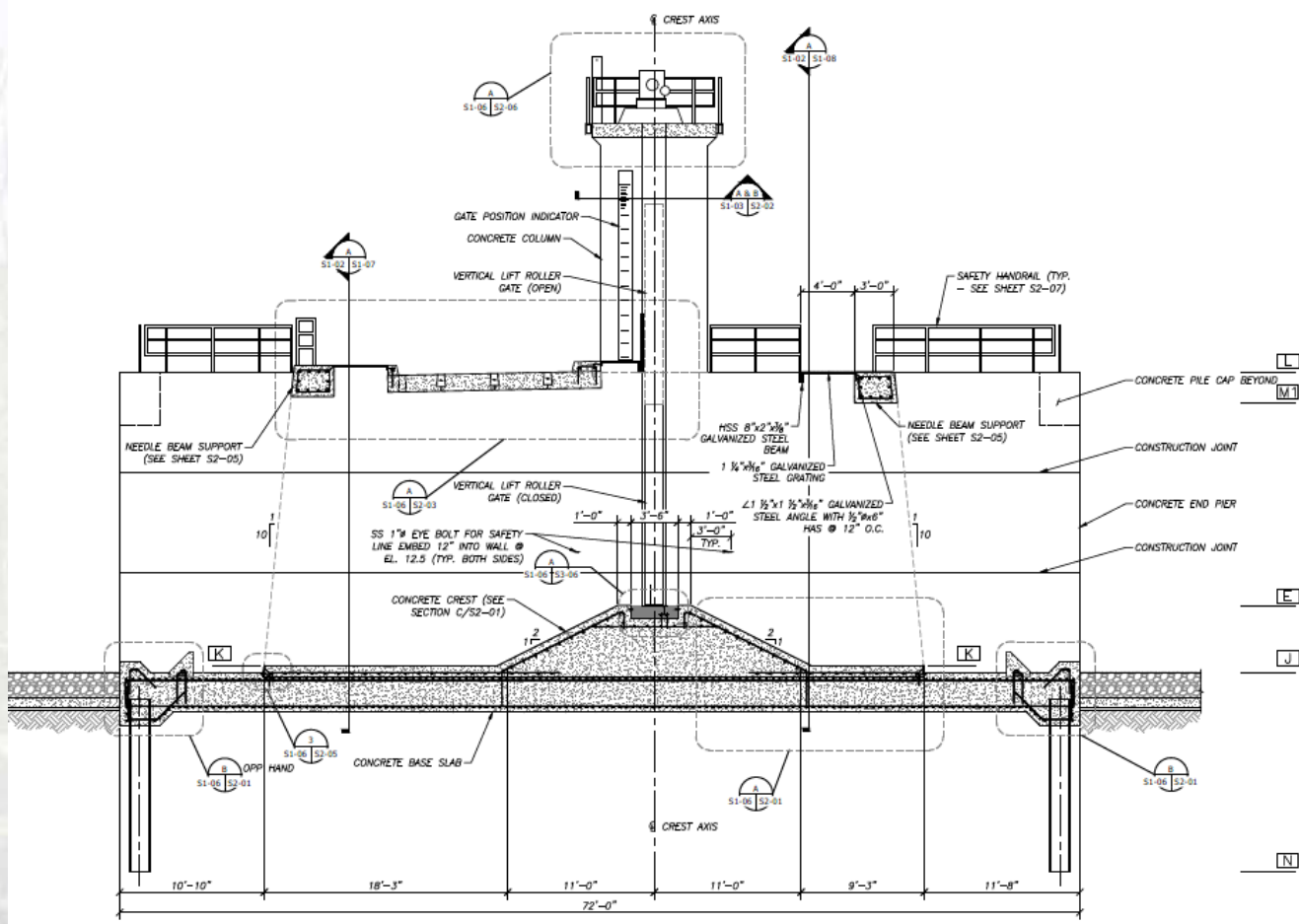
*Alan Shirkey, P.E.  
Section Administrator  
Project Management*

# G-716 Structure





# G-716 Structure



# G-716 Structure

## •Design and Construction Schedule:

- Structure Type Evaluation: Complete
- Structure Flow Calculations : Complete
- Preliminary design due: Complete
- Final design package due: Complete
- Project out for Bid: July 16, 2015
- Governing Board Approval: September 10, 2015
- Notice to Proceed: September 30, 2015
- Project Substantial Completion: April 1, 2017
- Project Final Acceptance: June 1, 2017

# G-716 Structure

<b>Milestone</b>	<b>Compliance date</b>	<b>Status</b>
Initiate design	9/30/2013	Complete
Complete design	7/30/2015	Pending
Initiate construction	1/31/2016	Pending
Complete construction	12/31/2018	Pending



# Quarterly Communications Meeting on the Long-Term Plan for Achieving Water Quality Goals for the Everglades Protection Area Tributary Basins

## STA 1W Expansion # 1

May 2015

*Alan Shirkey, P.E.  
Section Administrator  
Project Management*



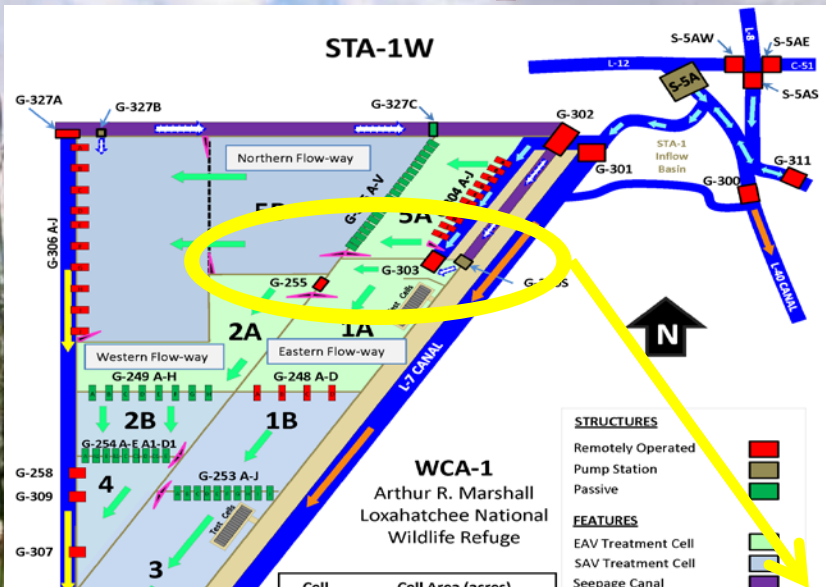
## STA 1W Expansion #1

- Design and Construction Schedule:
  - Hydraulic Study – Complete
  - Preliminary Design Plan Set – Complete
  - Preliminary Design Full Submittal – Complete
  - Intermediate Design Submittal – Complete
  - Final Design Submittal – June 12, 2015
  - Final Design TRB – July 8, 2015
  - Corrected Final/RTA Design Submittal – July 30, 2015
  - Governing Board – October 8, 2015
  - NTP – January 31, 2016
  - Substantial Completion – September 30, 2018
  - Final Completion – December 31, 2018

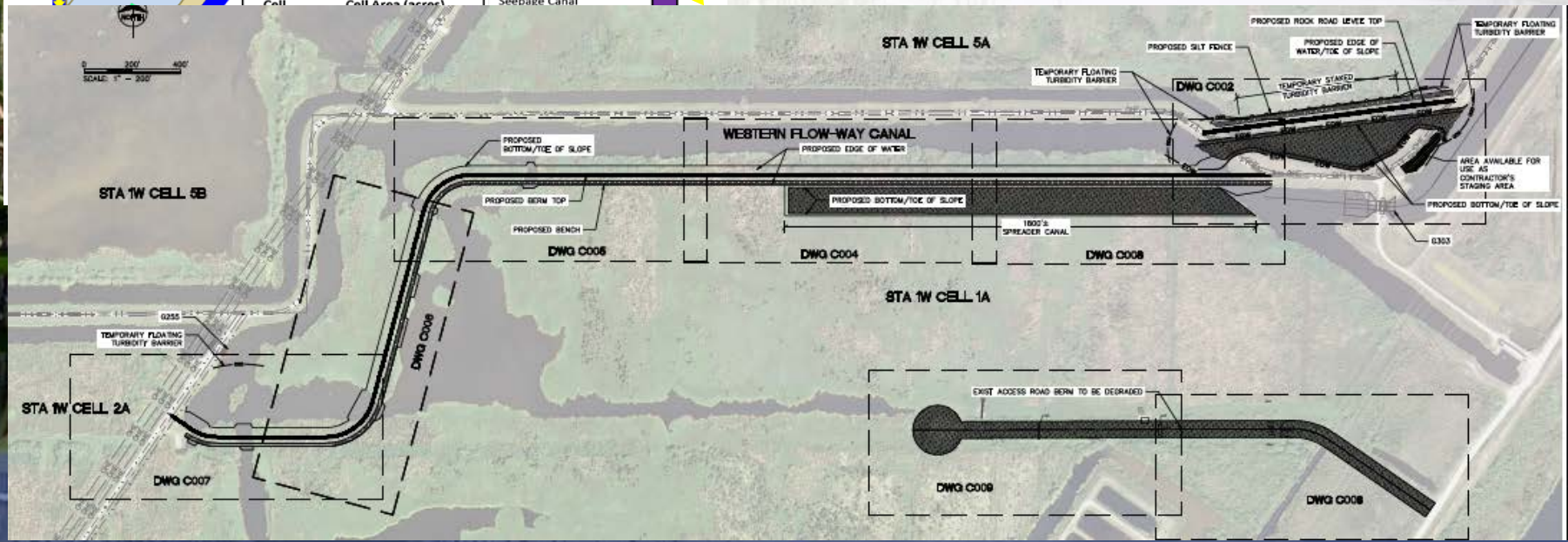
# Milestones

Milestone	Compliance date	Status
Complete land acquisition	9/30/2013	Complete
Initiate design	9/30/2013	Complete
Submit state and federal permits	7/30/2014	Complete
Complete design	7/30/2015	Pending
Initiate construction	1/31/2016	Pending
Construction status report	3/1/2017	Pending
Construction status report	3/1/2018	Pending
Completion of construction	12/31/2018	Pending
Initial flooding and optimization complete	12/30/2020	Pending

# Exist. STA Improvements Independent Western Flow way



- Provide the Western Flow-way with an independent inflow source
- Construction of approx. 5,000 linear feet of levees and berms
- Use existing G-255 and G-303 Structures
- Proposed Project Completion August 2015



# Exist. STA Improvements Independent Western Flow way

