

# Quarterly Communications Meeting on the Long-Term Plan for Achieving Water Quality Goals for the Everglades Protection Area Tributary Basins

## A-1 Flow Equalization Basin (FEB)

May 20, 2014

*Alan Shirkey, P.E.  
Section Administrator  
Engineering and Construction Bureau*

# A-1 FEB – Location and Existing Conditions





## A-1 FEB

- Design and Construction Schedule:
  - Preliminary Design – **Completed**
  - Intermediate Design Submittal – **Completed**
  - Final Design Submittal – **Completed**
  - Final Design TRB – **Completed**
  - Corrected Final/RTA Design Submittal – **Completed**
  - Governing Board – **Completed**
  - NTP – **Completed**
  - Substantial Completion – April 15, 2015
  - Final Completion – June 14, 2015

# Milestones

Milestone	Compliance date	Status
Initiate design	4/1/2012	Complete
Submit state and federal permits	12/1/2012	Complete
Design status report	3/1/2013	Complete
Complete design	8/1/2013	Complete
Initiate construction	6/30/2014	Complete
Construction status report	3/1/2015	Pending
Construction status report	3/1/2016	Pending
Completion of construction	7/30/2016	Pending
Initial flooding and optimization complete	7/29/2018	Pending

# Quarterly Communications Meeting on the Long-Term Plan for Achieving Water Quality Goals for the Everglades Protection Area Tributary Basins

## L-8 Flow Equalization Basin

May 20, 2014

*John Mitnik, P.E.  
Bureau Chief  
Engineering and Construction Bureau*

# Project Location

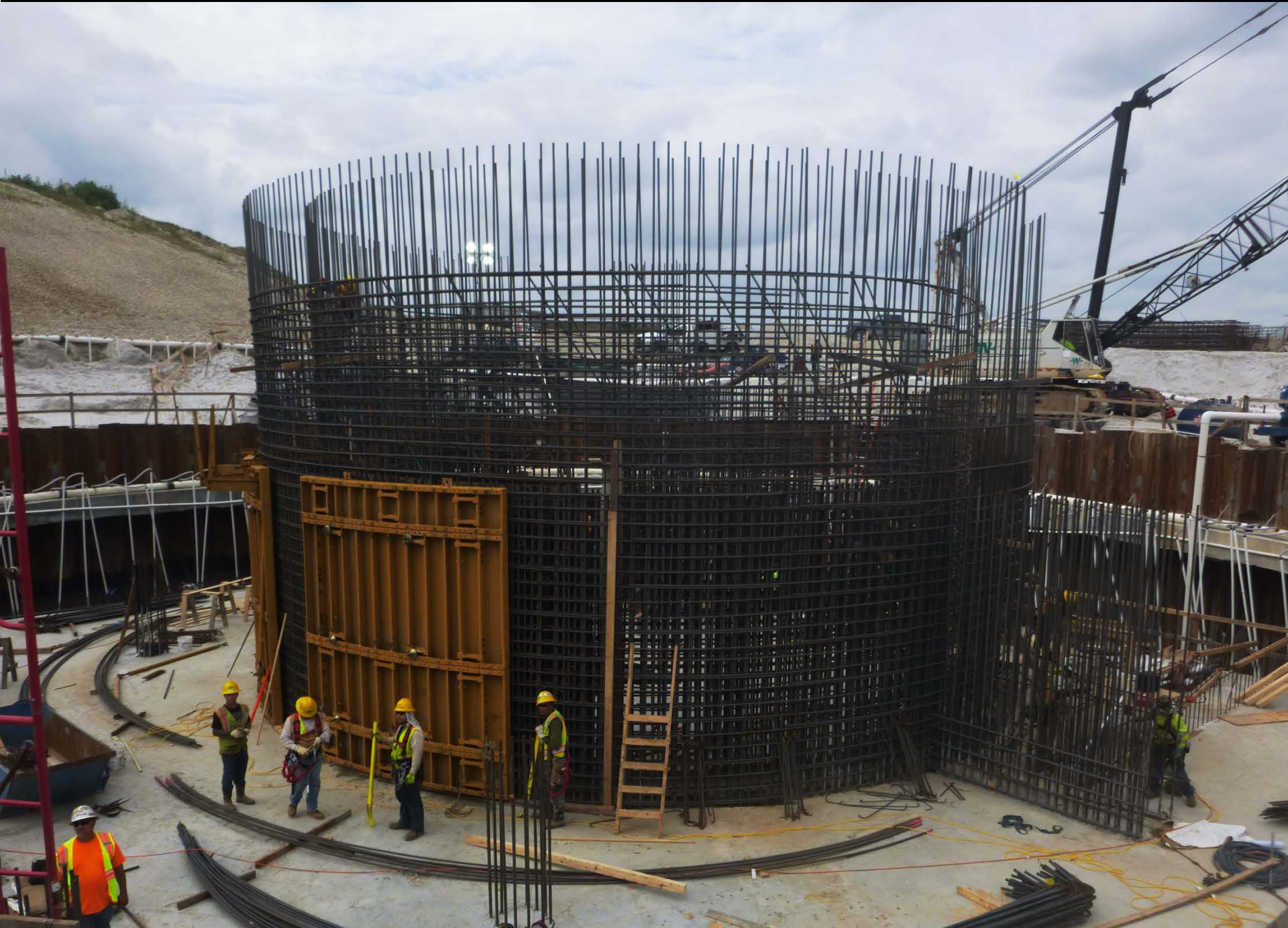




**Cells 1/2,4,5: -10.7' NAVD**  
**Cell 3: -32.1' NAVD**  
**Cell 6,7: -35.7' NAVD**









# Design/Build Schedule

- **Governing Board Approval** Completed
- **NTP** Completed
- **Preliminary Design (Revetment)** Completed
- **Preliminary Design (Pump and Inflow)** Completed
- **Final Design (Revetment)** Completed
- **Final Design (Pump and Inflow)** Completed
- **Revetment Construction – 25,500 lf of 26,928 lf completed**
- **Substantial Completion** April 18, 2015
- **Final Completion** October 15, 2015

# Milestones

Milestone	Compliance date	Status
Submit state and federal permits	1/31/2014	Complete
Construction status report	3/1/2014	<b>Complete</b>
Construction status report	3/1/2015	Pending
Completion of construction	12/31/2016	Pending
Long term operations	12/31/2022	Pending

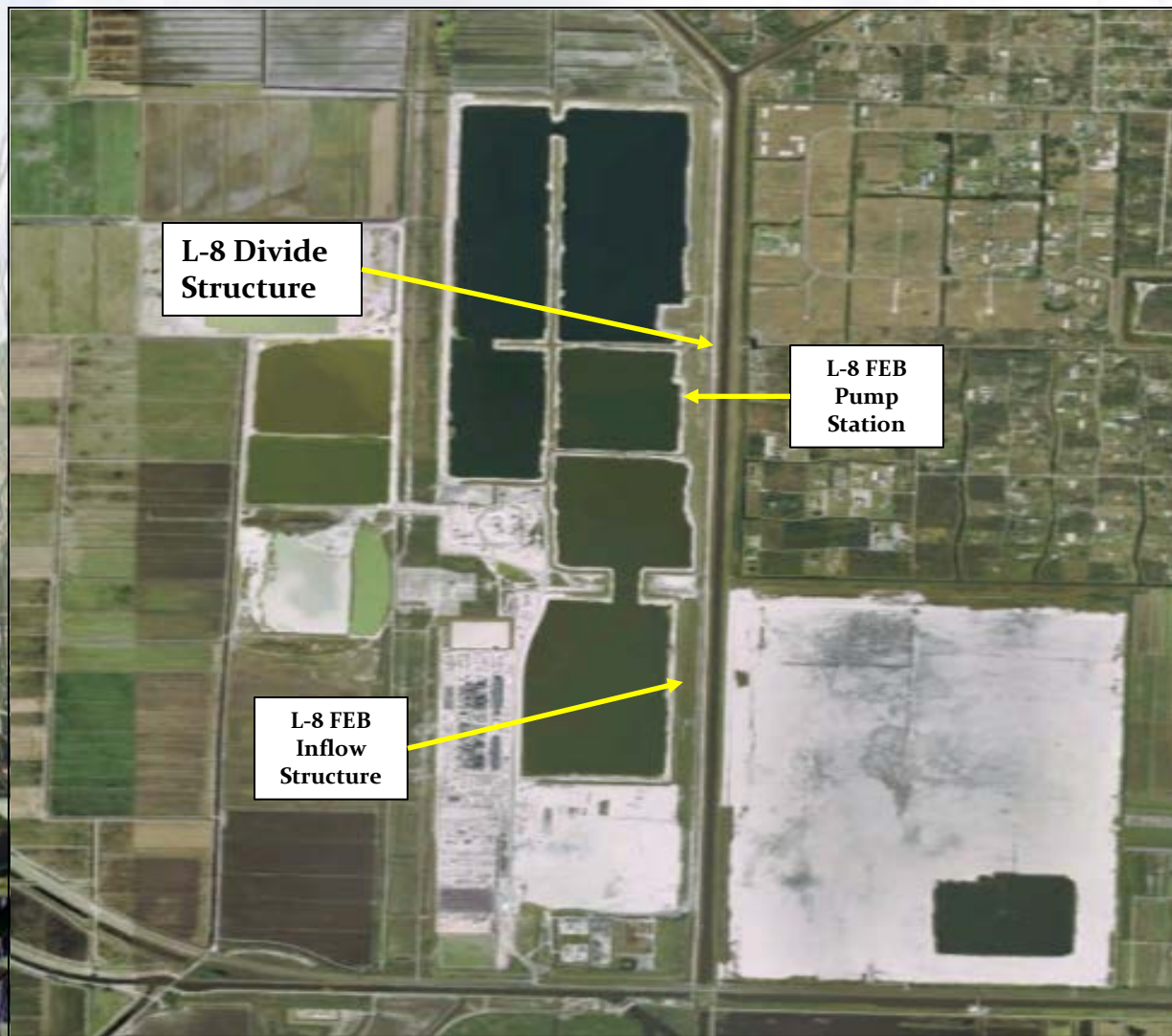
# Quarterly Communications Meeting on the Long-Term Plan for Achieving Water Quality Goals for the Everglades Protection Area Tributary Basins

## L-8 Divide Structure

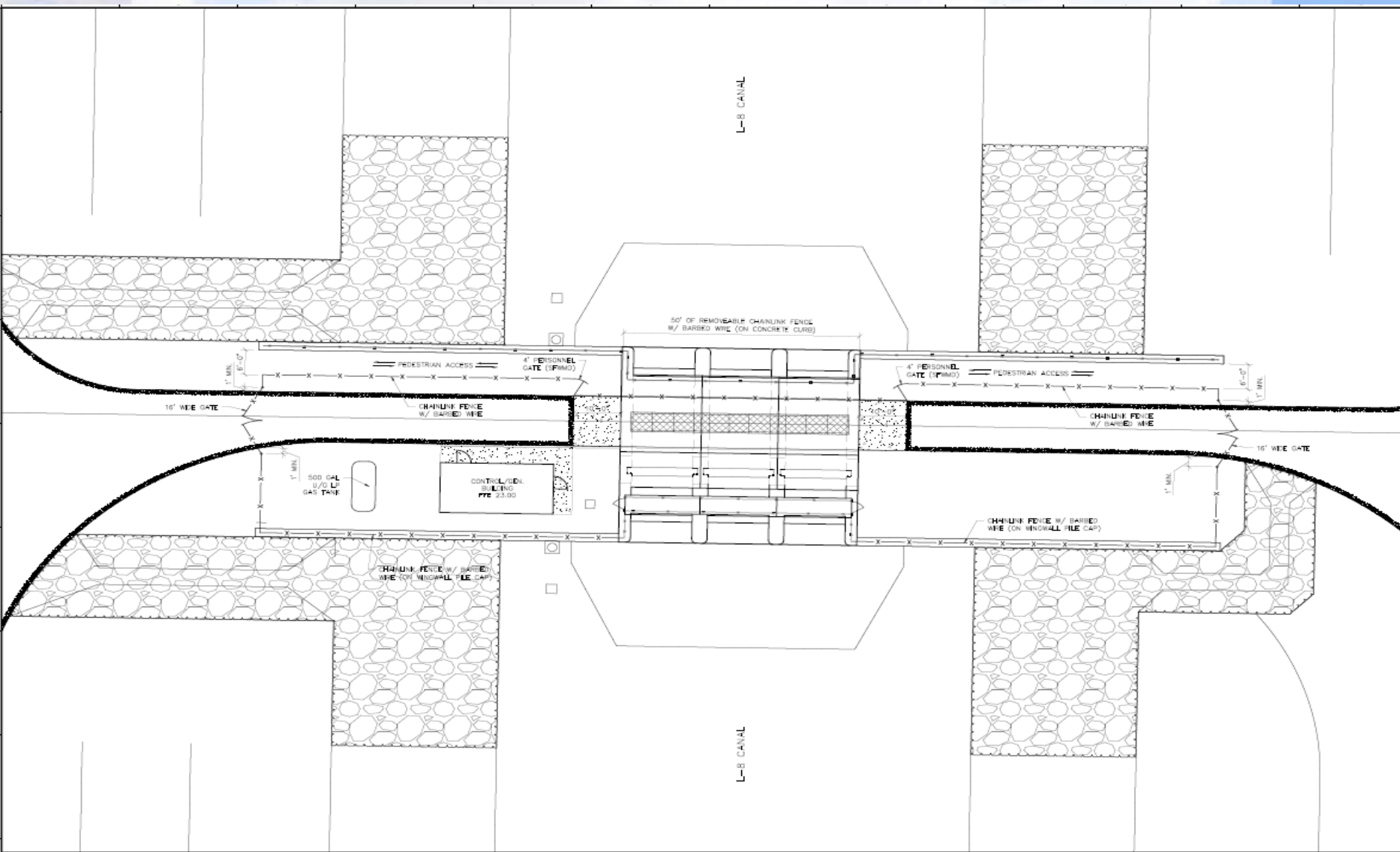
May 20, 2014

*John Mitnik, P.E.  
Bureau Chief  
Engineering and Construction Bureau*

# L-8 Divide Structure, G-541



# L-8 Divide Structure, G-541





# L-8 Divide Structure

## •Design and Construction Schedule:

- Hydrographic & topographic survey for the 26 miles of the L-8 Canal/Levee from C-10A to S-5AS: **Completed**
- Hydrologic & Hydraulic modeling efforts for structure design: **Completed**
- Geotechnical survey for structure subsurface & seepage analysis: **Completed**

•Preliminary design due :

**Completed**

•Final design package due:

**Completed** – USACE Review underway

•Notice to Proceed:

**August 2014**

•Project Substantial Completion:

**January 2016**

•Project Final Acceptance:

**March 2016**

# Milestones

Milestone	Compliance date	Status
Initiate design	10/1/2012	Complete
Complete design	9/30/2014	Complete
Initiate construction	10/1/2016	Pending
Complete construction	9/30/2018	Pending

# Quarterly Communications Meeting on the Long-Term Plan for Achieving Water Quality Goals for the Everglades Protection Area Tributary Basins

## S-5AS Divide Structure

May 20, 2014

*John Mitnik, P.E.  
Bureau Chief  
Engineering and Construction Bureau*

# S-5AS Divide Structure



# S-5AS Divide Structure

## •Design and Construction Schedule:

- Comprehensive Fluid Dynamic Model: Complete
- Structure Stability Review: Complete
- Preliminary design due: Complete
- Final design package due: June 23, 2014
- Project out for Bid: August 1, 2014
- Governing Board Approval : September 15, 2014
- Notice to Proceed : October 1, 2014
- Project Substantial Completion : April 1, 2016
- Project Final Acceptance: May 1, 2016

# S-5AS Divide Structure Milestones

<b>Milestone</b>	<b>Compliance date</b>	<b>Status</b>
Initiate design	10/1/2012	Complete
Complete design	9/30/2014	Pending
Initiate construction	10/1/2014	Pending
Complete construction	9/30/2016	Pending

# Quarterly Communications Meeting on the Long-Term Plan for Achieving Water Quality Goals for the Everglades Protection Area Tributary Basins

## G-716 Structure

May 20, 2014

*John Mitnik, P.E.  
Bureau Chief  
Engineering and Construction Bureau*

# G-716 Structure



Imagery Date: Nov 23, 2010

2011 Palm Beach County Aerial Photography  
26°41'15.91" N 80°20'56.74" W elev 20 ft

©2009 Google

Eye alt 20450 ft



# G-716 Structure



# G-716 Structure

## •Design and Construction Schedule:

- Structure Type Evaluation: Complete
- Structure Flow Calculations : Complete
- Preliminary design due: September 5, 2014
- Final design package due: May 1, 2015
- Project out for Bid: May 15, 2015
- Governing Board Approval: July 10, 2015
- Notice to Proceed: August 1, 2015
- Project Substantial Completion: February 15, 2017
- Project Final Acceptance: March 15, 2017

# G-716 Structure

<b>Milestone</b>	<b>Compliance date</b>	<b>Status</b>
Initiate design	9/30/2013	Complete
Complete design	7/30/2015	Pending
Initiate construction	1/31/2016	Pending
Complete construction	12/31/2018	Pending

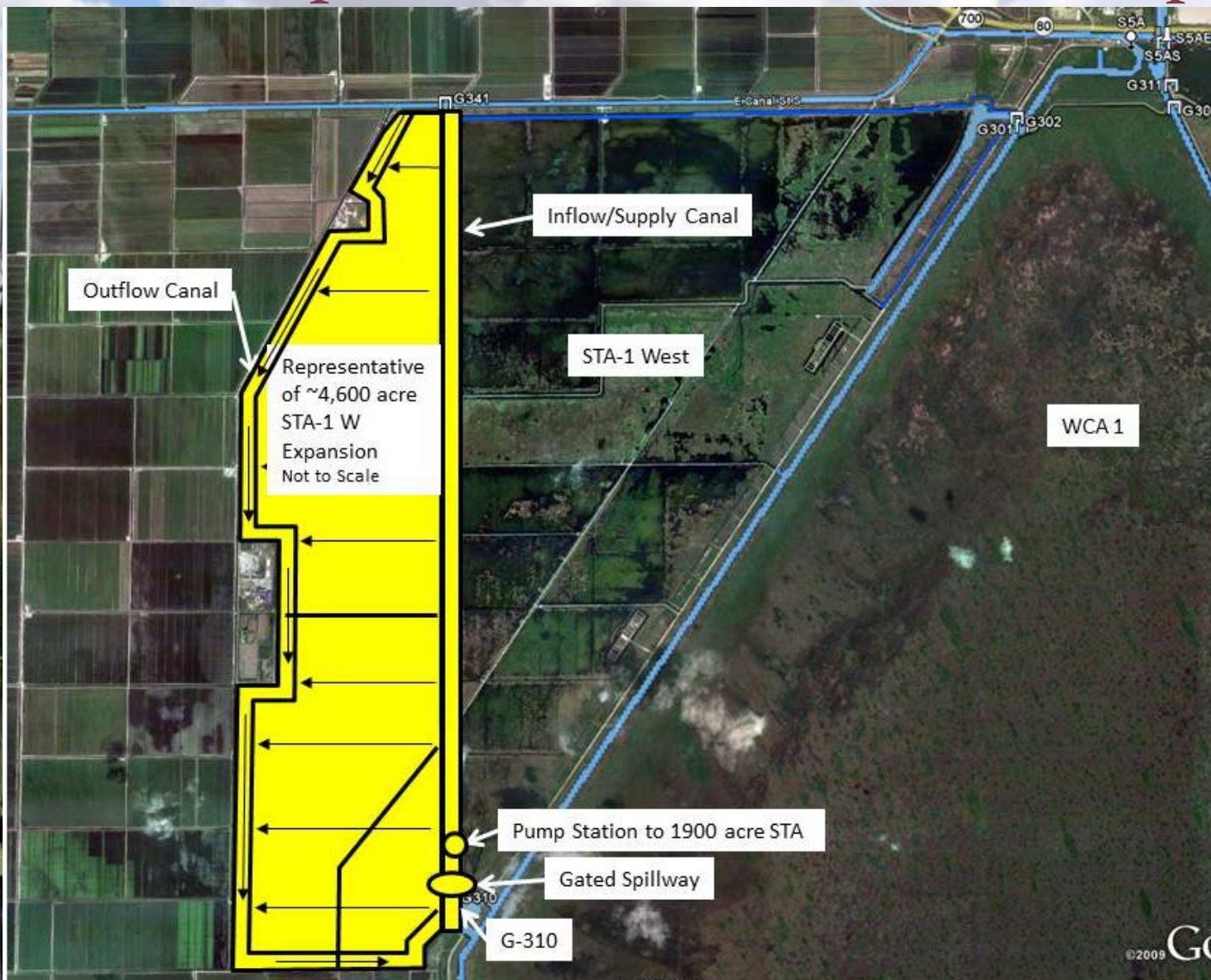
# Quarterly Communications Meeting on the Long-Term Plan for Achieving Water Quality Goals for the Everglades Protection Area Tributary Basins

## STA 1W Expansion # 1

May 20, 2014

*John Mitnik, P.E.  
Bureau Chief  
Engineering and Construction Bureau*

# STA 1W Expansion #1 – Location Map



## STA 1W Expansion #1

- Design and Construction Schedule:
  - Hydraulic Study – **Completed**
  - Preliminary Design Plan Set – July 15, 2014
  - Preliminary Design Full Submittal – October 31, 2014
  - Intermediate Design Submittal – February 27, 2015
  - Final Design Submittal – June 2, 2015
  - Final Design TRB – June 10, 2015
  - Corrected Final/RTA Design Submittal – July 17, 2015
  - Governing Board – January 14, 2016
  - NTP – January 31, 2016
  - Substantial Completion – September 30, 2018
  - Final Completion – December 31, 2018

# Milestones

Milestone	Compliance date	Status
Complete land acquisition	9/30/2013	Complete
Initiate design	9/30/2013	Complete
Submit state and federal permits	7/30/2014	Pending
Complete design	7/30/2015	Pending
Initiate construction	1/31/2016	Pending
Construction status report	3/1/2017	Pending
Construction status report	3/1/2018	Pending
Completion of construction	12/31/2018	Pending
Initial flooding and optimization complete	12/30/2020	Pending

# Questions?

