

Quarterly Communications Meeting Long-Term Plan for Achieving Water Quality Goals for the Everglades Protection Area Tributary Basins

Lucine Dadrian, P.E.
Section Administrator
Project Management

December 2016

Long-Term Plan Project Summary

Project	Construction Completion Compliance Date	Status
L-8 Flow Equalization Basin	12/31/2016	Pending
G-541 / L-8 Divide	9/30/2018	Complete
S-5AS	9/30/2016	Complete
G-716	12/31/2018	Pending
STA 1W Expansion #1	12/31/2018	Pending
RS-G341 Bolles Canal	12/31/2024	Pending

G-538 Inflow Structure



All Cells: 1.1' NAVD

November 14, 2016



G-539 Pump Station

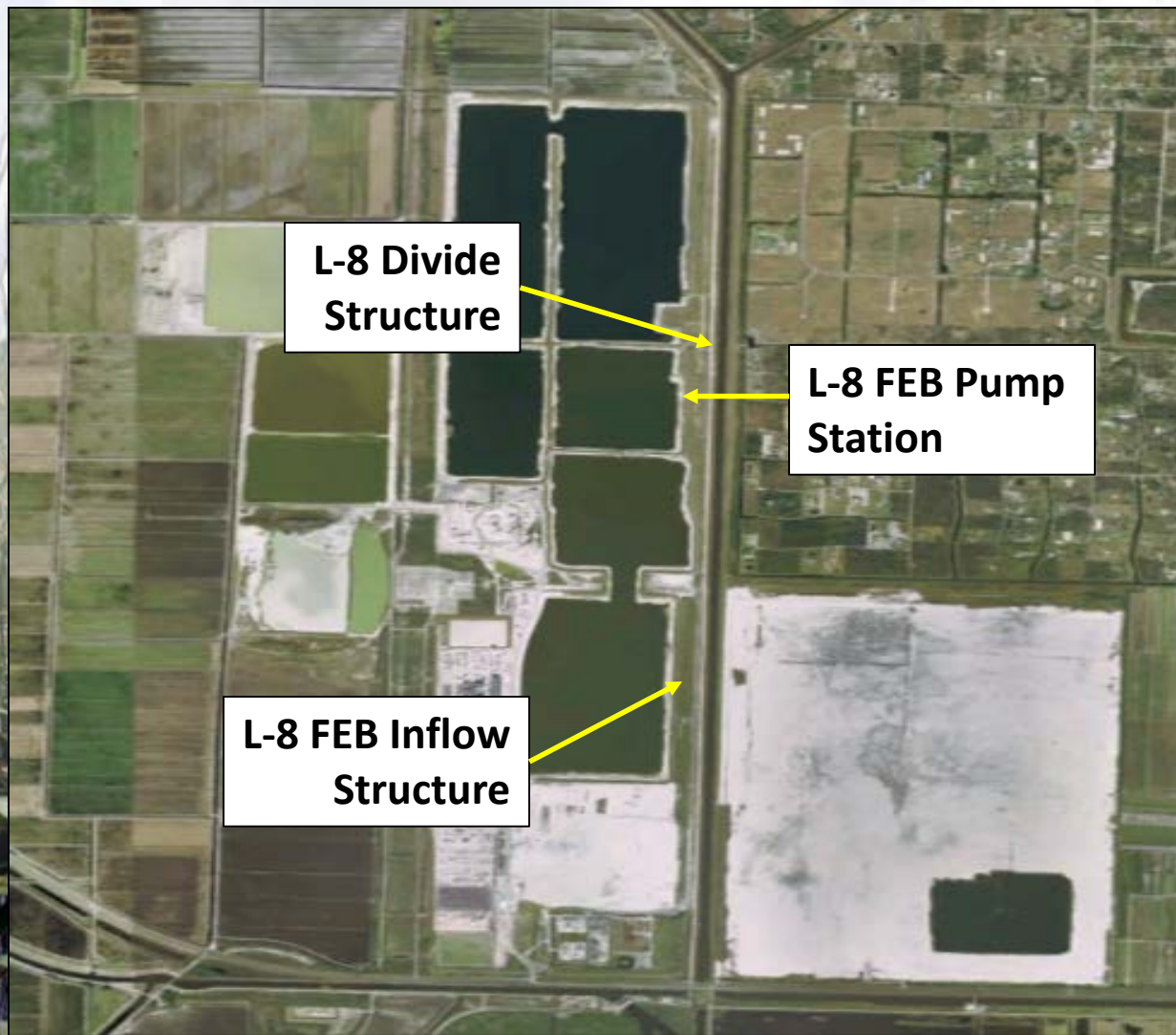
L-8 Flow Equalization Basin

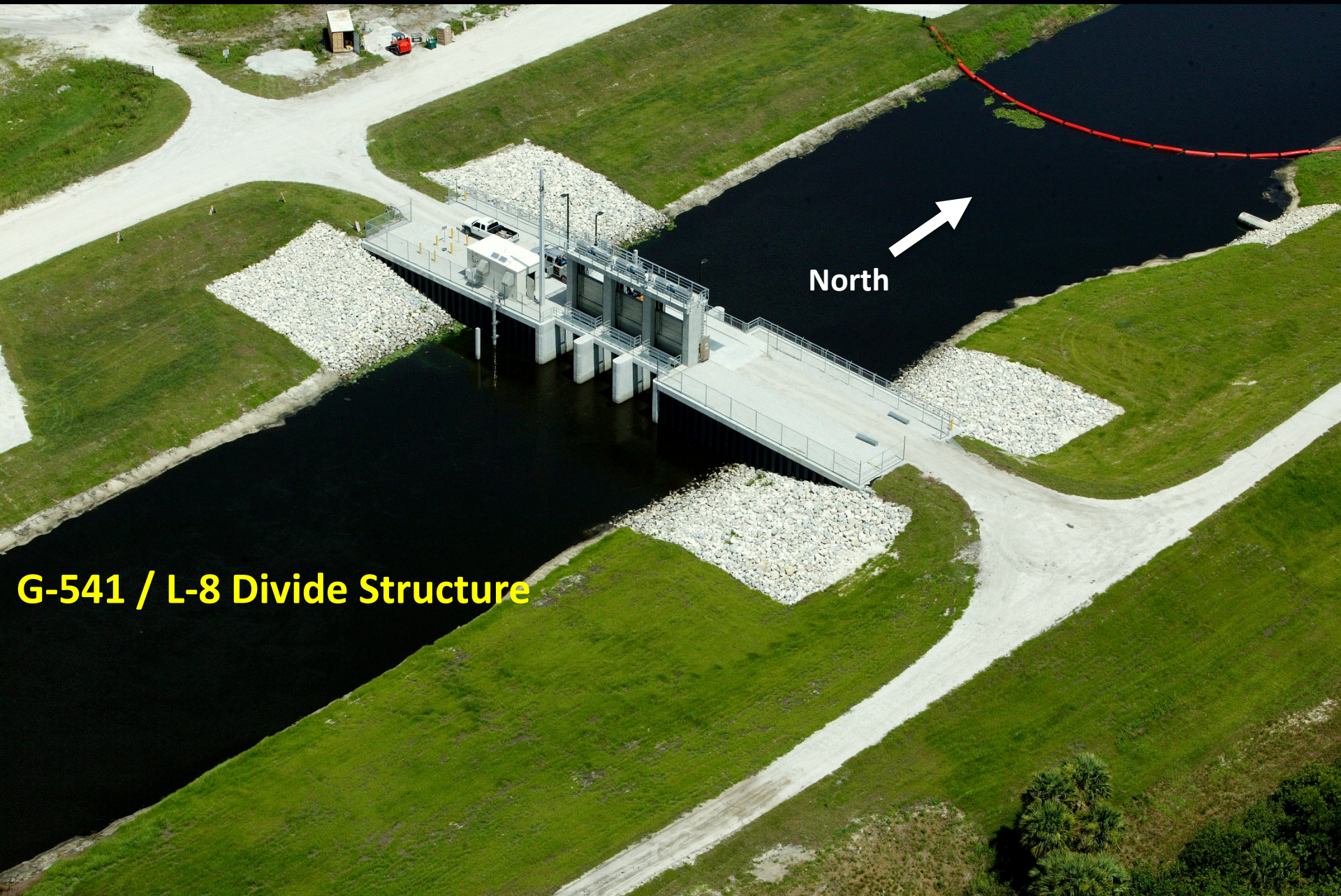
- **Governing Board Approval** Complete
- **Notice to Proceed** Complete
- **Preliminary Design (Revetment)** Complete
- **Preliminary Design (Pump and Inflow)** Complete
- **Final Design (Revetment)** Complete
- **Final Design (Pump and Inflow)** Complete
- **Revetment Construction** Complete
- **Substantial Completion (SC)** April 18, 2015
 - **Partial SC – Inflow Gate Structure** July 14, 2016
 - **Partial SC – Exterior Levees** August 22, 2016
- **Final Completion** October 15, 2015

L-8 Flow Equalization Basin

Milestone	Compliance Date	Status
Submit state and federal permits	1/31/2014	Complete
Construction status report	3/1/2014	Complete
Construction status report	3/1/2015	Complete
Completion of construction	12/31/2016	Pending
Long term operations	12/31/2022	Pending

G-541 / L-8 Divide Structure





North

G-541 / L-8 Divide Structure

G-541 / L-8 Divide Structure

Design and Construction Schedule

- Design Complete
- Notice to Proceed October 15, 2014
- Substantial Completion July 7, 2016
- Final Completion September 7, 2016

Milestones

Milestone	Compliance Date	Status
Initiate design	10/1/2012	Complete
Complete design	9/30/2014	Complete
Initiate construction	10/1/2016	Complete
Complete construction	9/30/2018	Complete

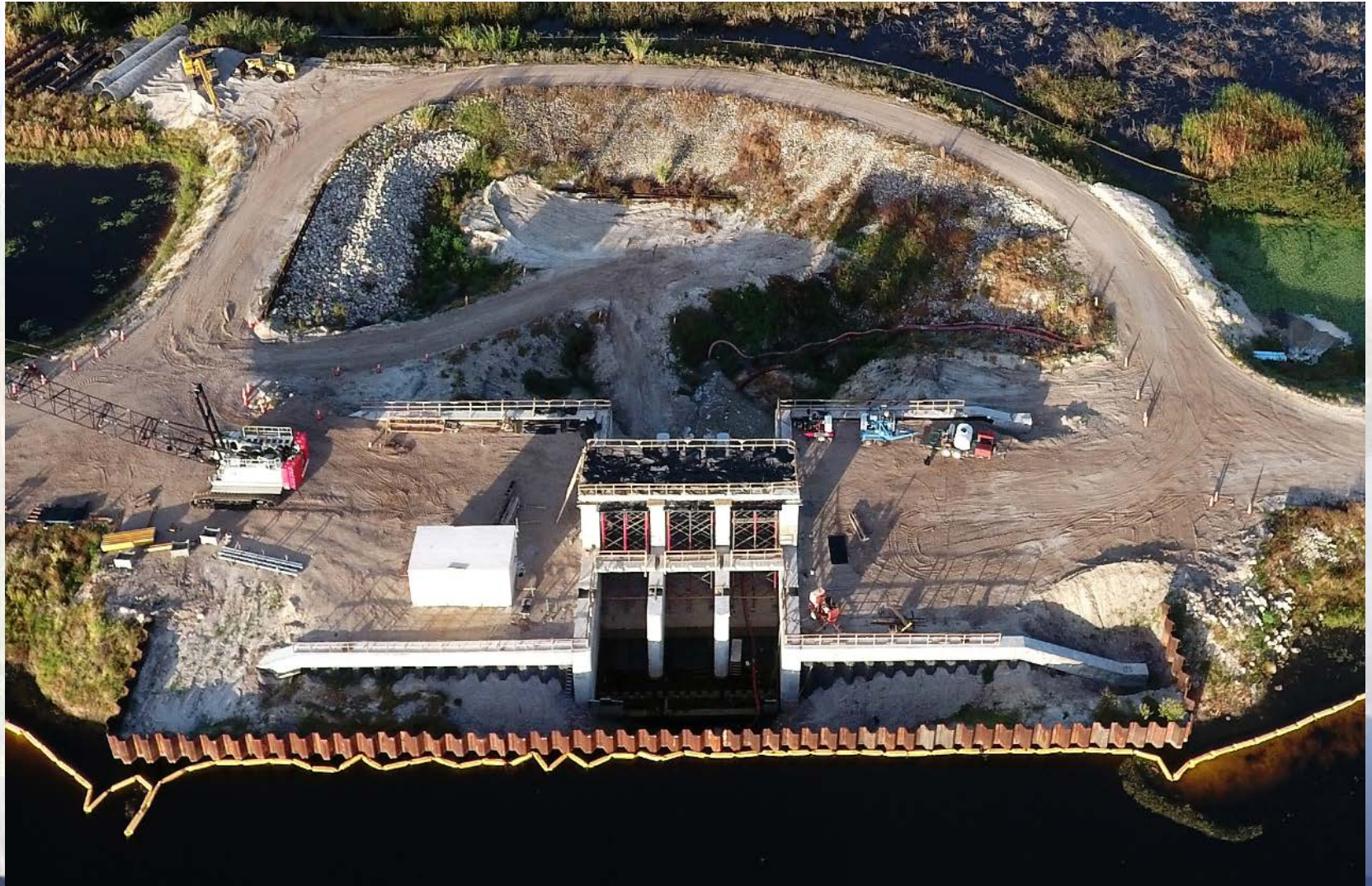
G-716 Structure



G-716 Structure



G-716 Structure

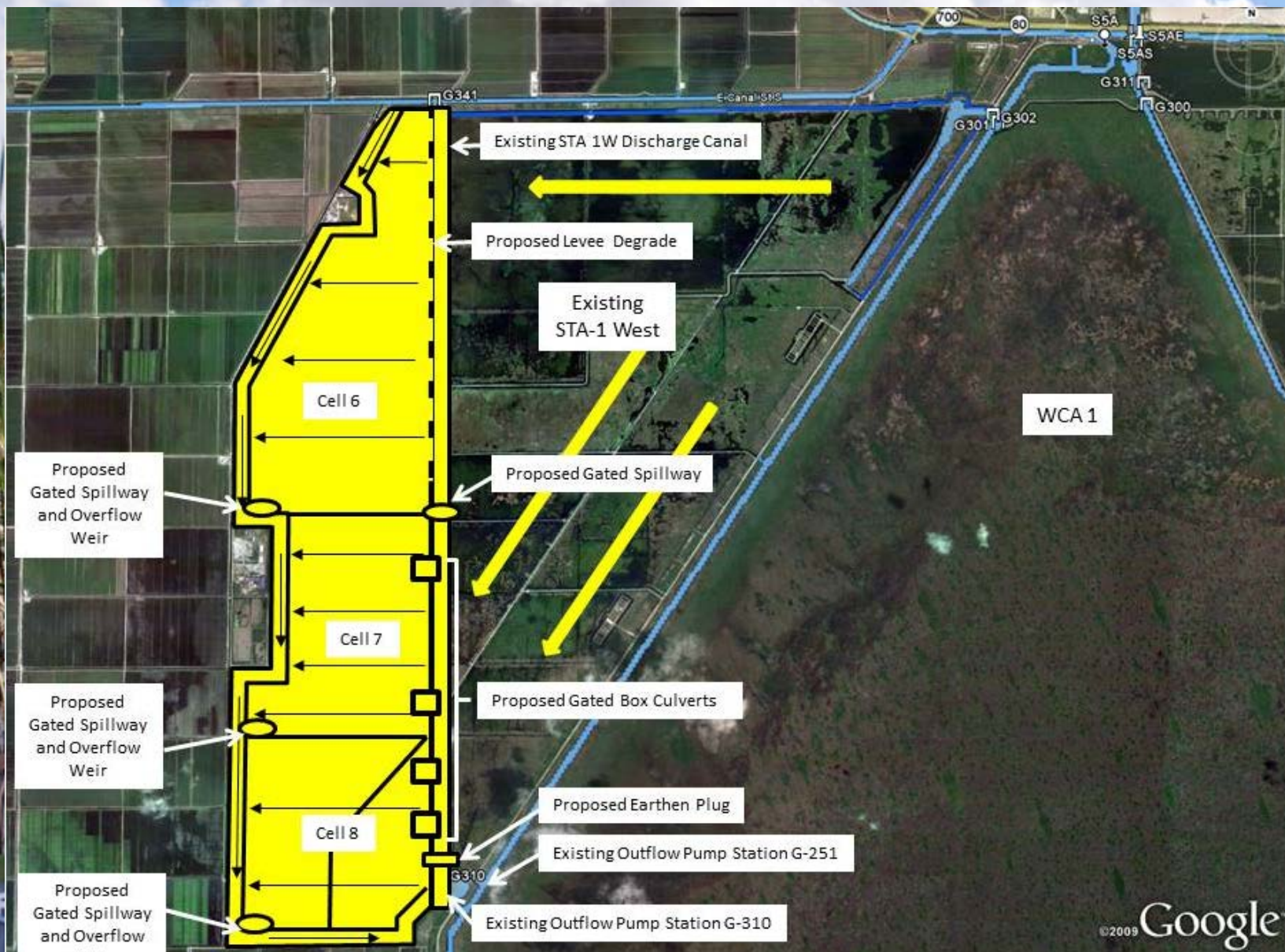


G-716 Structure

Design and Construction Schedule

- **Structure Type Evaluation** **Complete**
- **Structure Flow Calculations** **Complete**
- **Preliminary Design** **Complete**
- **Final Design** **Complete**
- **Governing Board Approval** **Complete**
- **Notice to Proceed** **Complete**
- **Substantial Completion** **April 7, 2017**
- **Final Acceptance** **June 6, 2017**

STA-1W Expansion #1



STA-1W Expansion #1



Canal and Embankment Construction

STA-1W Expansion #1



G-728 Structure Construction

STA-1W Expansion #1

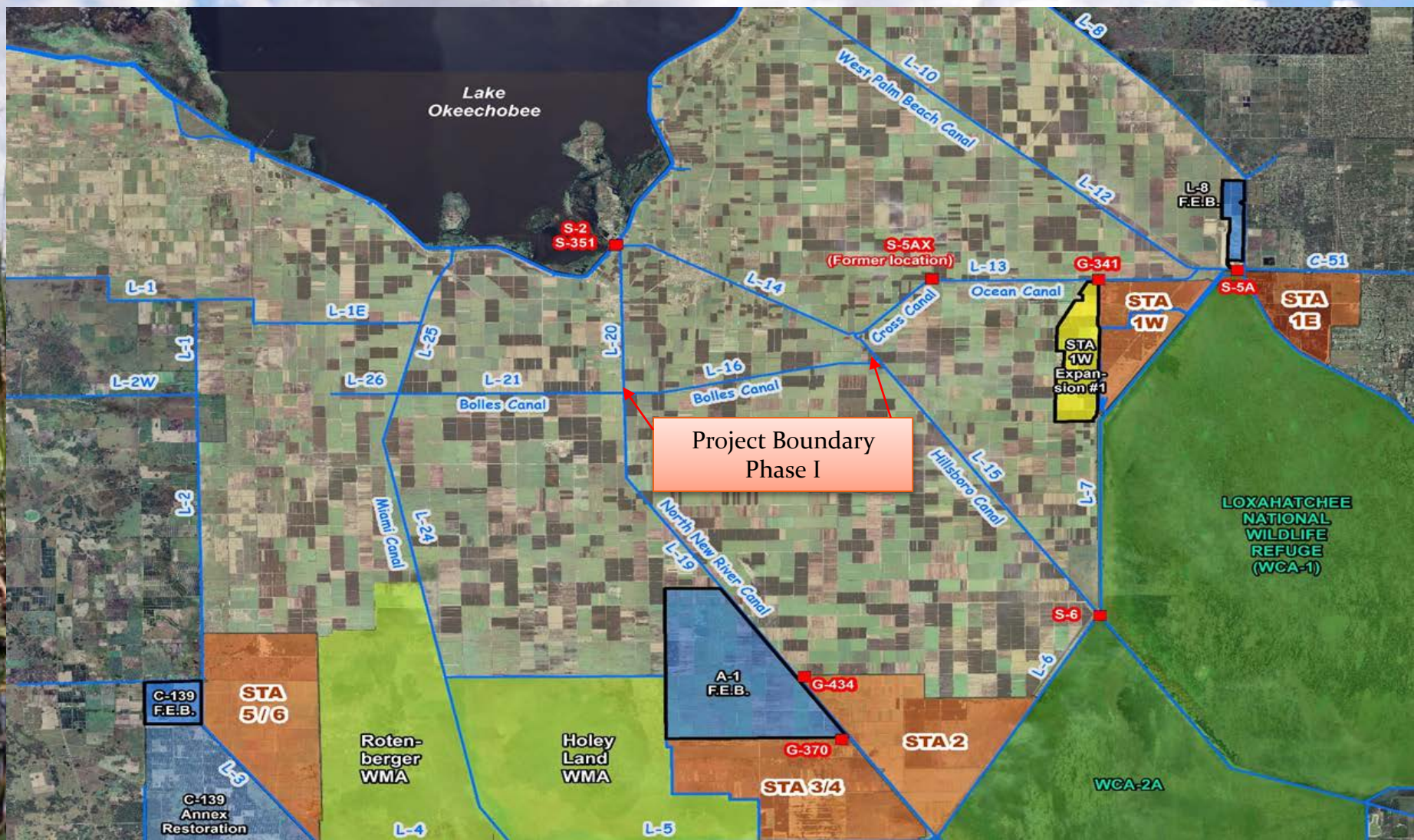
Design and Construction Schedule

- **Hydraulic Study** Complete
- **Preliminary Design** Complete
- **Intermediate Design** Complete
- **Final Design** Complete
- **Governing Board Approval** Complete
- **Notice to Proceed** Complete
- **Substantial Completion** September 20, 2018
- **Final Completion** December 14, 2018

Milestones

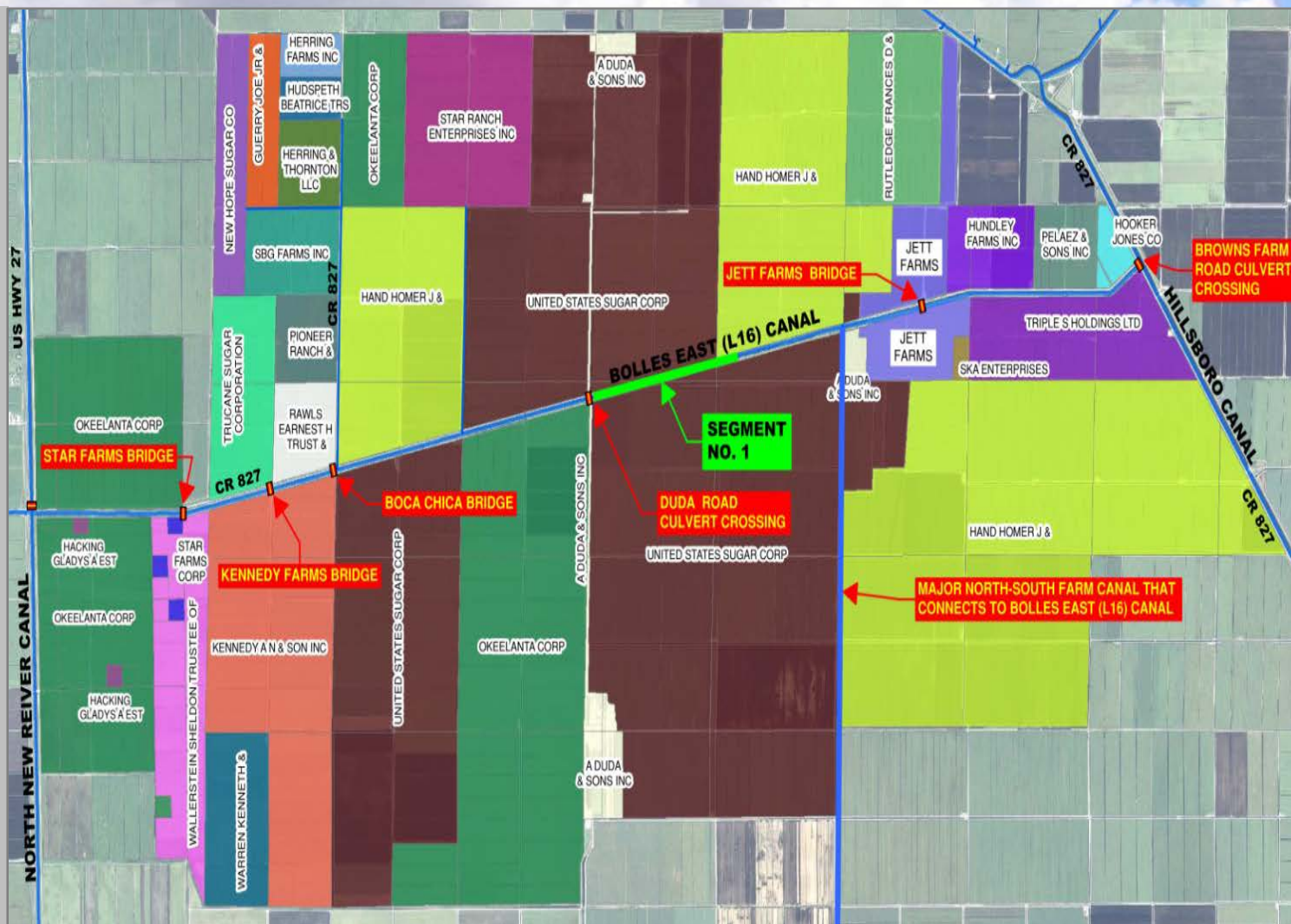
Milestone	Compliance Date	Status
Complete land acquisition	9/30/2013	Complete
Initiate design	9/30/2013	Complete
Submit state and federal permits	7/30/2014	Complete
Complete design	7/30/2015	Complete
Initiate construction	1/31/2016	Complete
Construction status report	3/1/2017	Pending
Construction status report	3/1/2018	Pending
Completion of construction	12/31/2018	Pending
Initial flooding and optimization complete	12/30/2020	Pending

RS-G341 Bolles Canal Phase I



RS-G341 Bolles Canal Phase I Segment 1

- Segment 1 Construction Completion – September 2016



Final Section of Segment 1

Before Construction



After Construction



New Canal Cross Section



RS-G341 Bolles Canal Phase I Duda Bridge

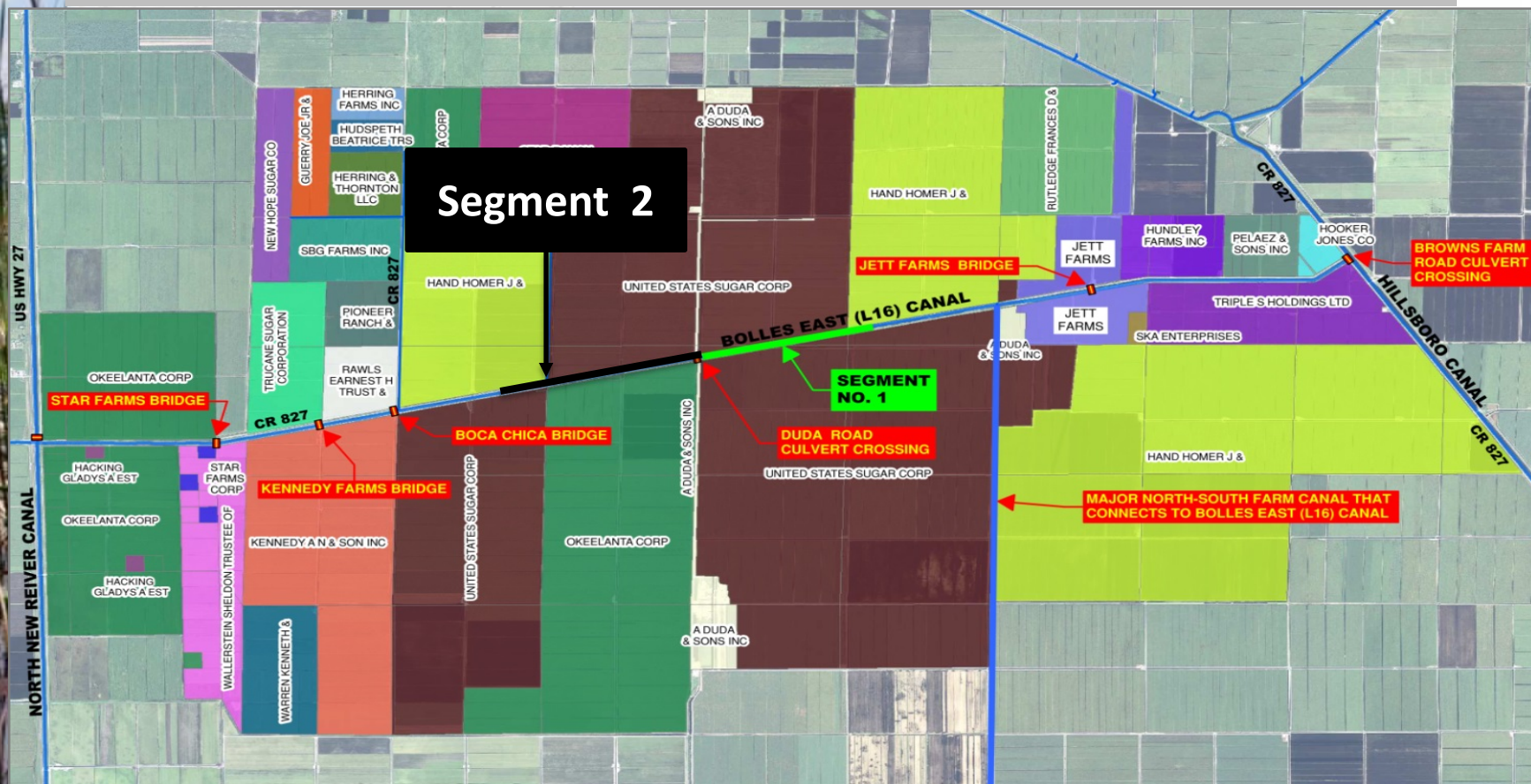
- Duda Bridge Replacement Cooperative Agreement Executed – February 2016
- District Cost Share NTE - \$1.1 M
- Permits Obtained – April/May 2016
- Design Completed – May 2016
- Construction Start – May 30, 2016
- Construction Completion – September 2016



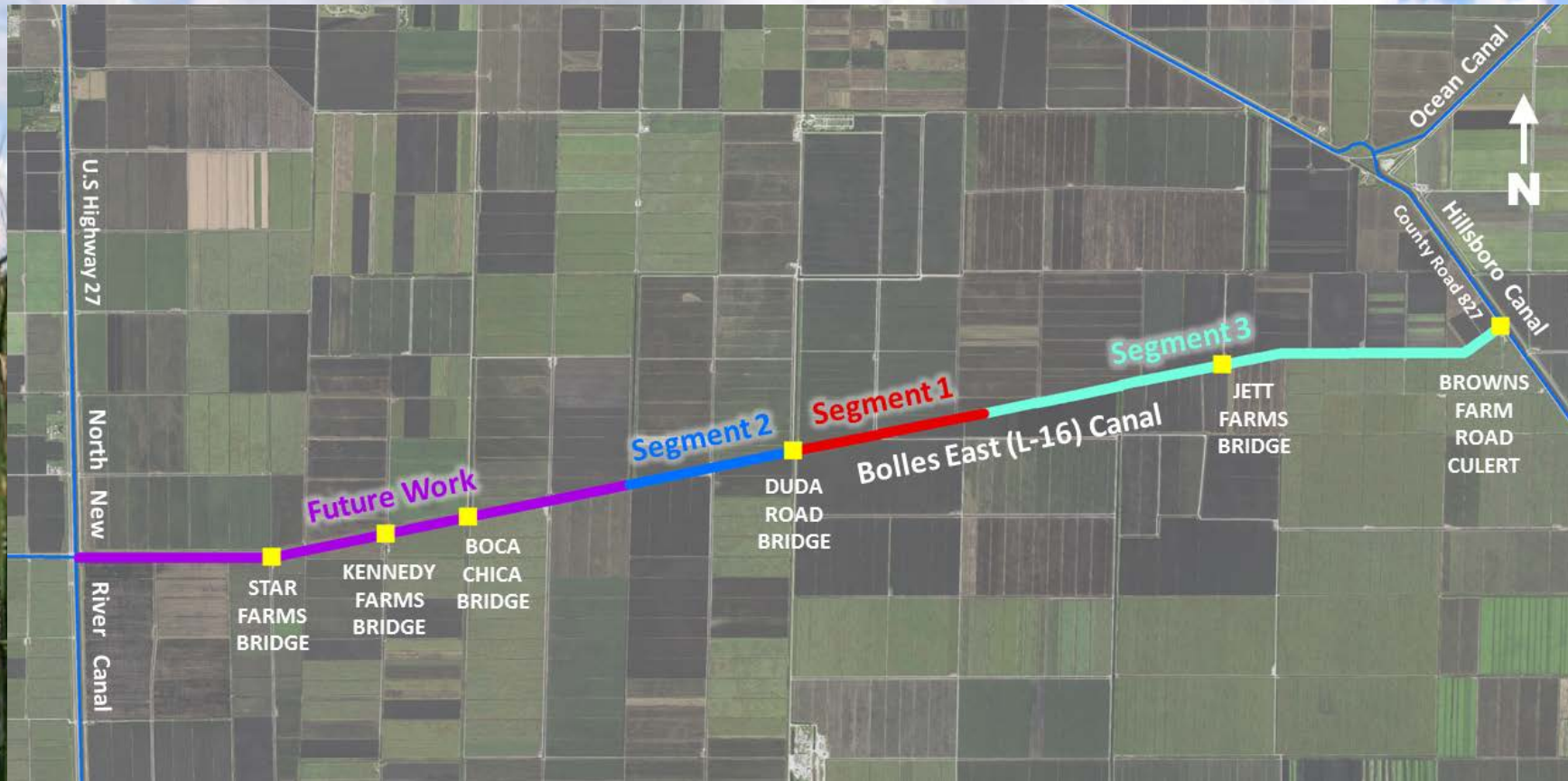
RS-G341 Bolles Canal Phase I Segment 2

Segment 2 – Construction Kick Off – July 2016

Construction Completion – May 2017



RS-G341 Bolles Canal-Phase I Segment 3



- Segment 3 - Consists of design of remaining 3.5 miles of the eastern end of the Bolles Canal
- Segment 3 Design Completion – April 2017
- Future Work – will consist of the remaining 3.5 miles of the western end of the Bolles Canal

RS-G341 Bolles Canal Phase I

Design and Construction Schedule Phase 1

- Design of Segment 1 Complete
- Design of Segment 2 Complete
- Segment 1 Construction Complete
- Duda Bridge Replacement Complete
- Segment 2 Notice to Proceed July 2016
- Segment 2 Substantial Completion March 31, 2017
- Segment 2 Final Completion May 30, 2017
- Segment 3 Final Design April 2017

Construction Activities Segment 2

- Farm Ditch 80% Complete
- Farm Road 70% Complete
- Excavation Main Canal 30% Complete

Milestones

Milestone	Compliance Date	Status
Complete land acquisition	9/30/2021	Pending
Initiate Design	10/1/2020	Complete
Submit state and federal permits	8/1/2021	Complete
Complete design	7/31/2022	Pending
Initiate construction	11/30/2022	Complete
Construction status report	3/1/2023	Pending
Construction status report	3/1/2024	Pending
Completion of construction	12/31/2024	Pending