

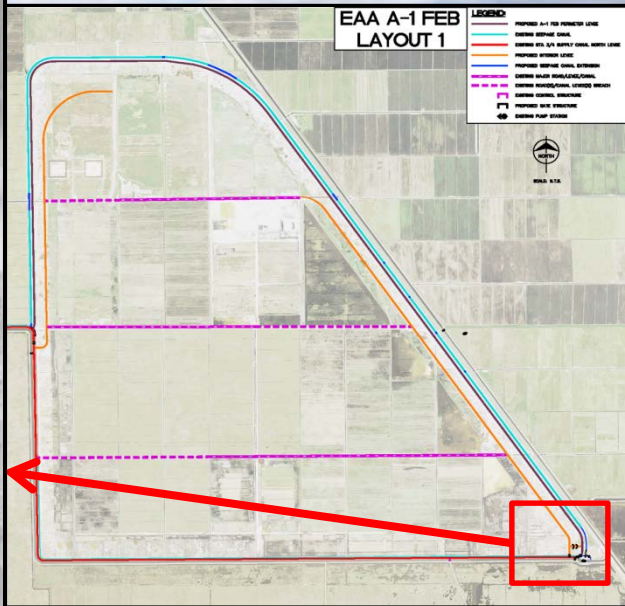
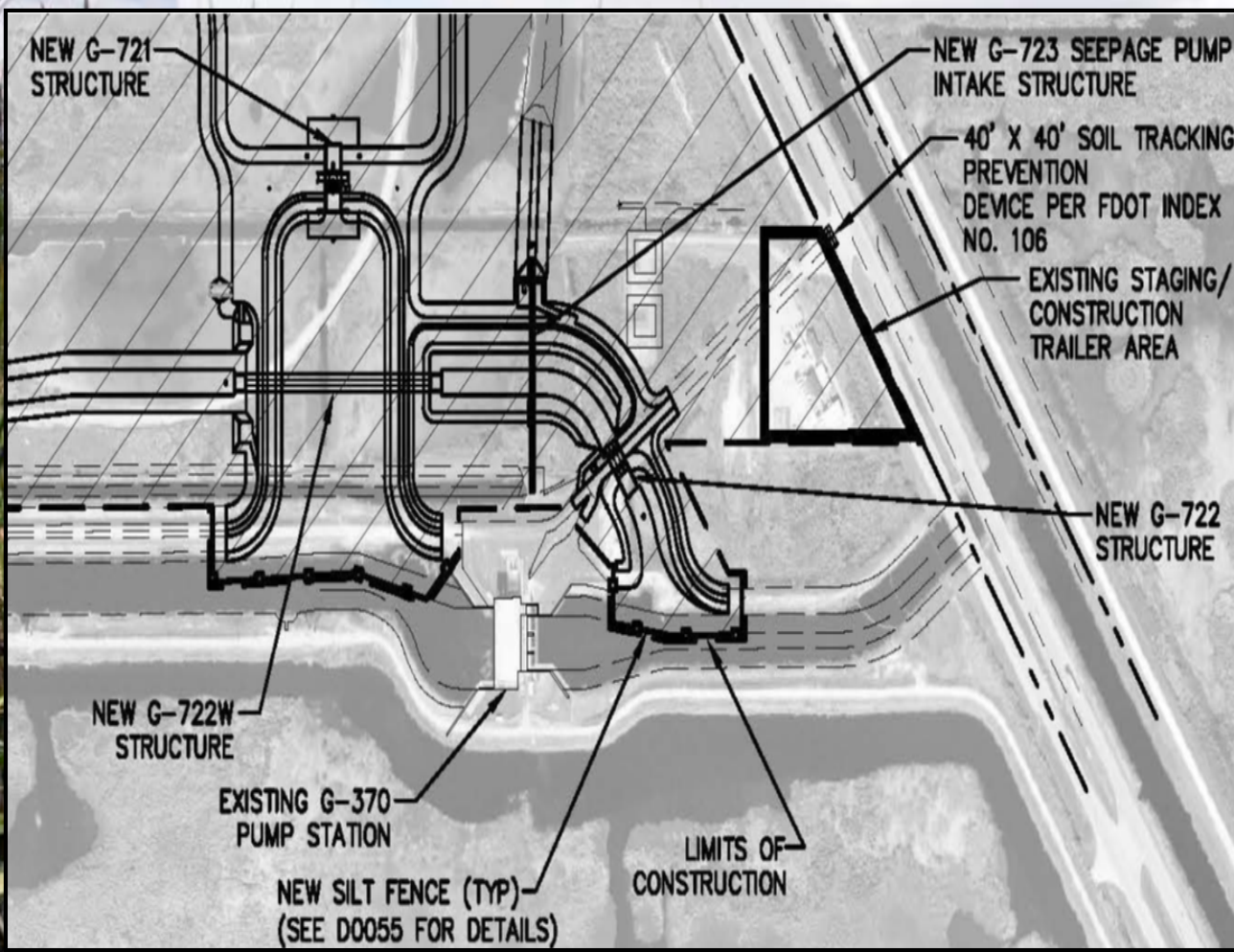
Quarterly Communications Meeting on the Long-Term Plan for Achieving Water Quality Goals for the Everglades Protection Area Tributary Basins

A-1 Flow Equalization Basin (FEB)

September 4, 2015

*Alan Shirkey, P.E.
Section Administrator
Project Management
Engineering & Construction Bureau*

A-1 FEB SE Corner





G-720 Inflow Structure
& Tie-in Levee



G-720 Inflow Structure
& West Inflow Channel



Southeast Corner G-370 pump Station
& East Inflow Channel



G-724 Outflow Structure



G-723 Seepage Control Structure

G-722 Outflow Structure

A-1 FEB Start-Up

Initial Start Up and Water Quality Dates - Week of:

8/17/15	Initial Filling Commenced
9/14/15	Sampling for Mercury & Other Toxicants
9/21/15	1st Sampling for TP Inflow vs. Potential Outflow
9/28/15	2nd Sampling for TP Inflow vs. Potential Outflow
10/5/15	3rd Sampling for TP Inflow vs. Potential Outflow
10/12/15	4th Sampling for TP Inflow vs. Potential Outflow
10/12/15	Comply with Water Quality: off-site discharge may commence to STA 3/4



A-1 FEB

- Design and Construction Schedule:
 - Preliminary Design – Completed
 - Intermediate Design Submittal – Completed
 - Final Design Submittal – Completed
 - Final Design TRB – Completed
 - Corrected Final/RTA Design Submittal – Completed
 - Governing Board – Completed
 - NTP – Completed
 - Substantial Completion – Complete
 - Final Completion – September 3, 2015

Milestones

Milestone	Compliance date	Status
Initiate design	4/1/2012	Complete
Submit state and federal permits	12/1/2012	Complete
Design status report	3/1/2013	Complete
Complete design	8/1/2013	Complete
Initiate construction	6/30/2014	Complete
Construction status report	3/1/2015	Complete
Construction status report	3/1/2016	Pending
Completion of construction	7/30/2016	Pending
Initial flooding and optimization complete	7/29/2018	Pending

Quarterly Communications Meeting on the Long-Term Plan for Achieving Water Quality Goals for the Everglades Protection Area Tributary Basins

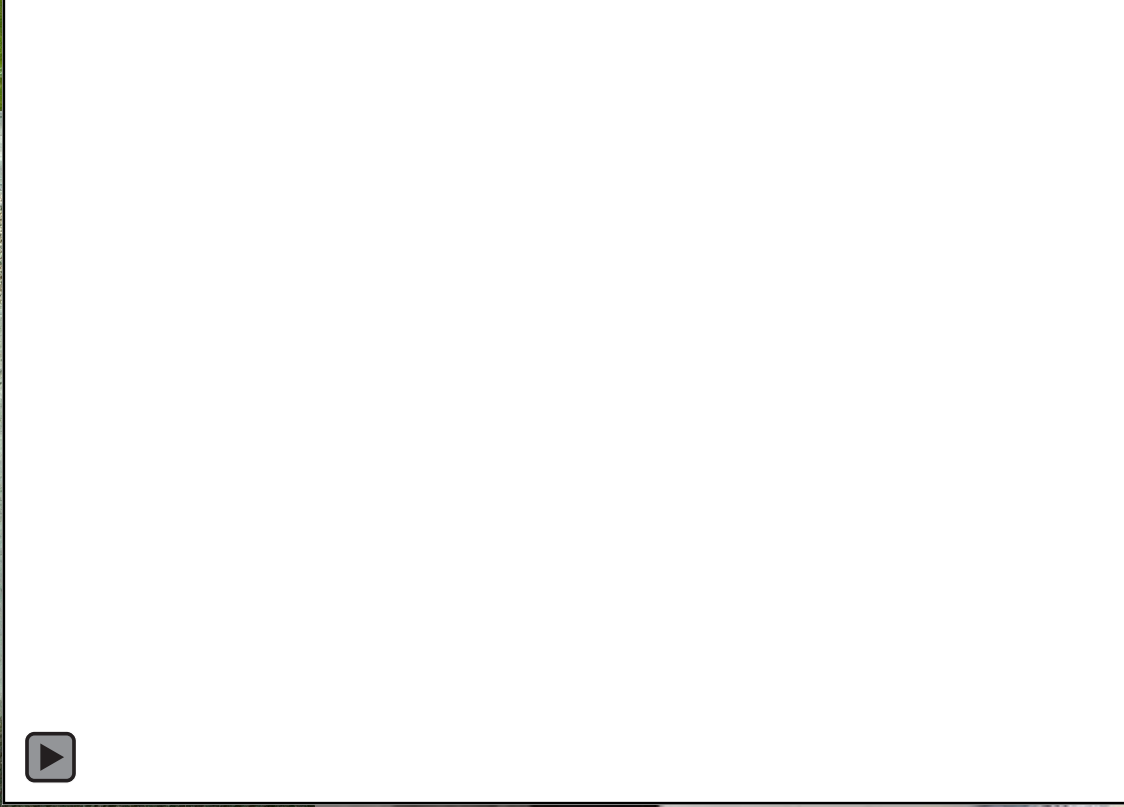
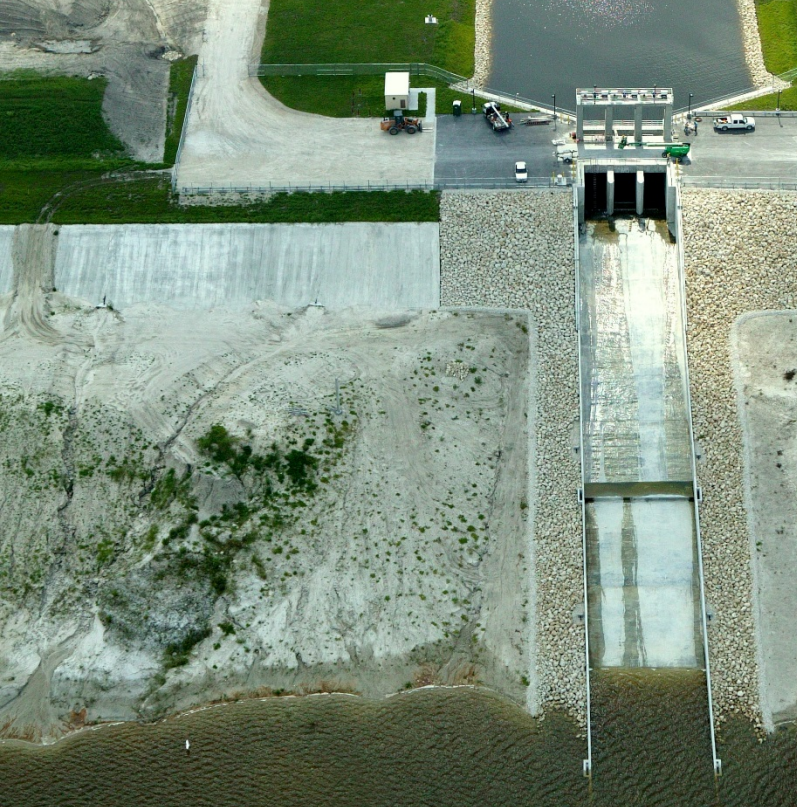
L-8 Flow Equalization Basin

September 4, 2015

Project Location



SOUTH FLORIDA WATER MANAGEMENT DISTRICT



All Cells: -11.20' NAVD



G-539 Pump Station



G-539 Pump Station



Design/Build Schedule

- **Governing Board Approval** Completed
- **NTP** Completed
- **Preliminary Design (Revetment)** Completed
- **Preliminary Design (Pump and Inflow)** Completed
- **Final Design (Revetment)** Completed
- **Final Design (Pump and Inflow)** Completed
- **Revetment Construction –** Completed
- **Substantial Completion** **April 18, 2015**
- **Final Completion** **October 15, 2015**

Milestones

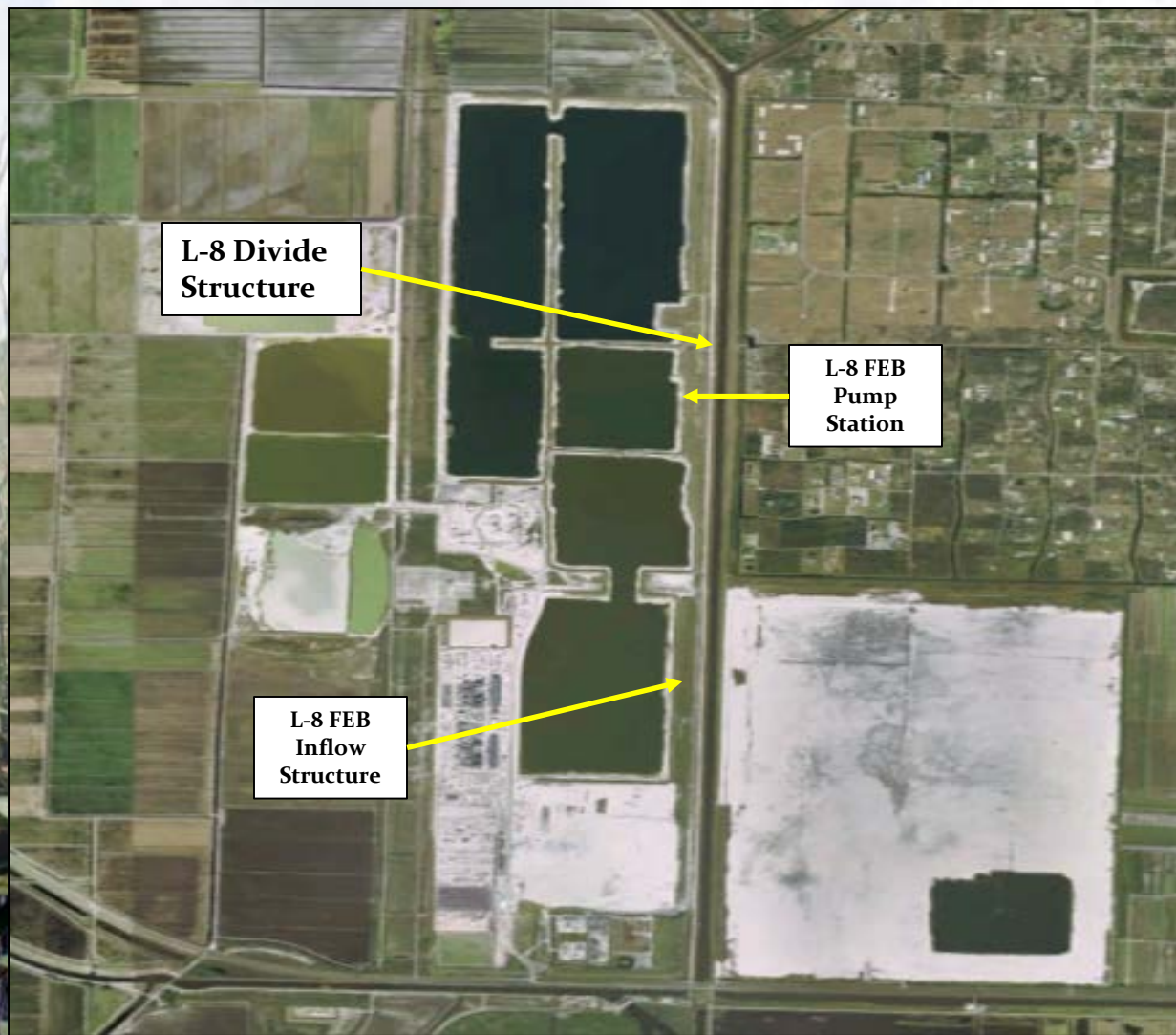
Milestone	Compliance date	Status
Submit state and federal permits	1/31/2014	Complete
Construction status report	3/1/2014	Complete
Construction status report	3/1/2015	Complete
Completion of construction	12/31/2016	Pending
Long term operations	12/31/2022	Pending

Quarterly Communications Meeting on the Long-Term Plan for Achieving Water Quality Goals for the Everglades Protection Area Tributary Basins

L-8 Divide Structure

September 4, 2015

L-8 Divide Structure, G-541



L-8 Divide
Structure
G-541







L-8 Divide Structure

- Design: Completed
- Construction Schedule:
 - Notice to Proceed: October 15, 2014
 - Project Substantial Completion: February 7, 2016
 - Project Final Completion: April 7, 2016
- Construction activities:
 - Bypass Channel – Completed
 - Slab and Walls – Completed
 - Service Bridge Pour - Pending

Milestones

Milestone	Compliance date	Status
Initiate design	10/1/2012	Complete
Complete design	9/30/2014	Complete
Initiate construction	10/1/2016	Complete
Complete construction	9/30/2018	Pending

Quarterly Communications Meeting on the Long-Term Plan for Achieving Water Quality Goals for the Everglades Protection Area Tributary Basins

S-5AS Divide Structure

September 4, 2015

S-5AS Divide Structure



S-5AS Divide Structure



S-5AS Divide Structure



S-5AS Divide Structure



S-5AS Divide Structure

•Design and Construction Schedule:

- Comprehensive Fluid Dynamic Model: Complete
- Structure Stability Review: Complete
- Preliminary design due: Complete
- Final design package due: Complete
- Project out for Bid: Complete
- Governing Board Approval : Complete
- Notice to Proceed : Complete
- Project Substantial Completion : Feb 28, 2016
- Project Final Acceptance: April 28, 2016

S-5AS Divide Structure Milestones

Milestone	Compliance date	Status
Initiate design	10/1/2012	Complete
Complete design	9/30/14	Complete
Initiate construction	10/1/14	Complete
Complete construction	9/30/16	Pending

Quarterly Communications Meeting on the Long-Term Plan for Achieving Water Quality Goals for the Everglades Protection Area Tributary Basins

G-716 Structure

September 4, 2015

G-716 Structure

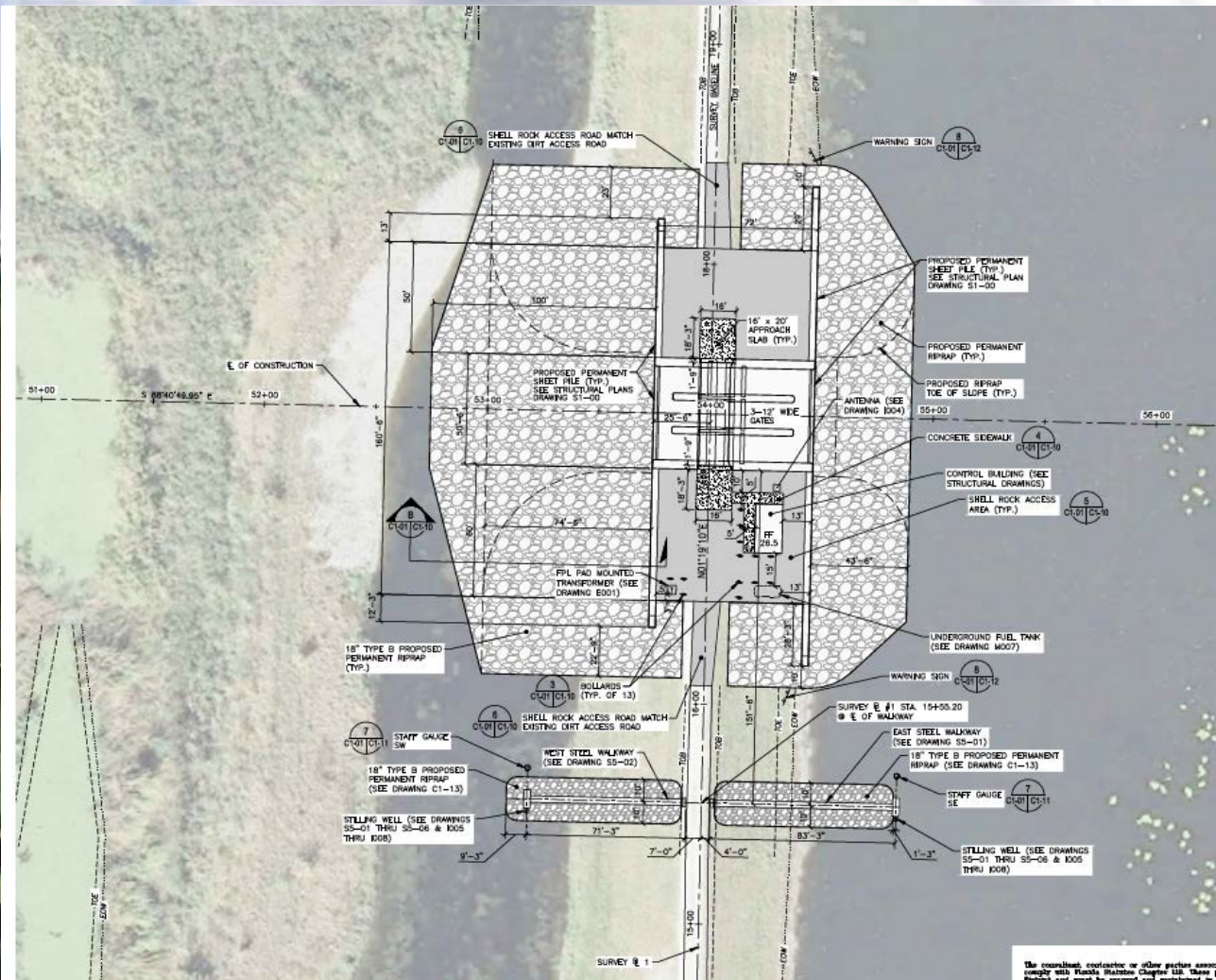


Imagery Date: Nov 23, 2010

2011 Palm Beach County Aerial Photography
26°41'15.91" N 80°20'58.74" W elev 20 ft

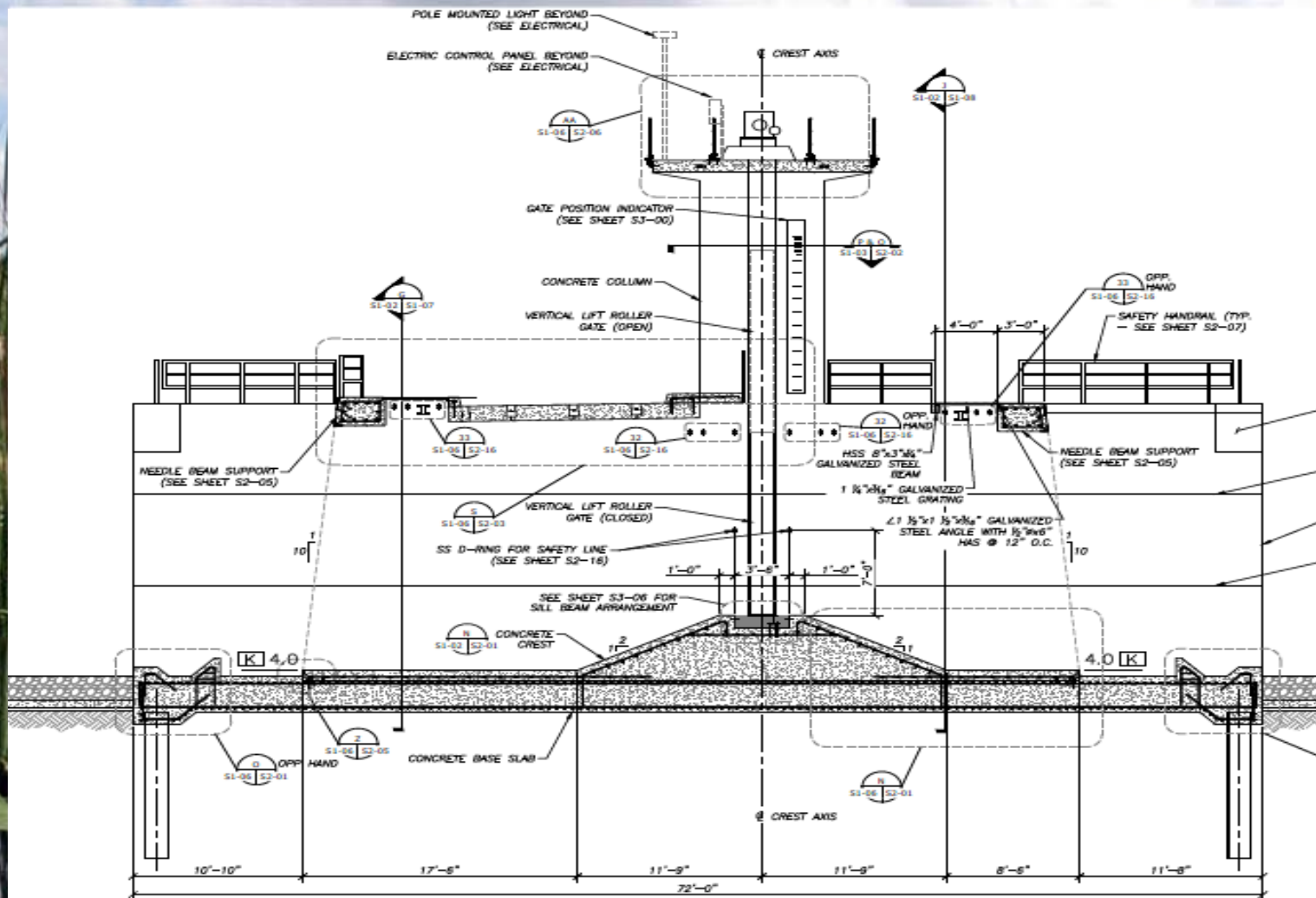
Eye alt 20450 ft

G-716 Structure



The consultant, contractor or other parties are to comply with Florida Statute Chapter 119, those of the District and must be licensed and approved by the District.

G-716 Structure



G-716 Structure

•Design and Construction Schedule:

- Structure Type Evaluation: Complete
- Structure Flow Calculations : Complete
- Preliminary design due: Complete
- Final design package due: Complete
- Project out for Bid: September 2, 2015
- Governing Board Approval: October 8, 2015
- Notice to Proceed: November 1, 2015
- Project Substantial Completion: April 1, 2017
- Project Final Acceptance: June 1, 2017

G-716 Structure

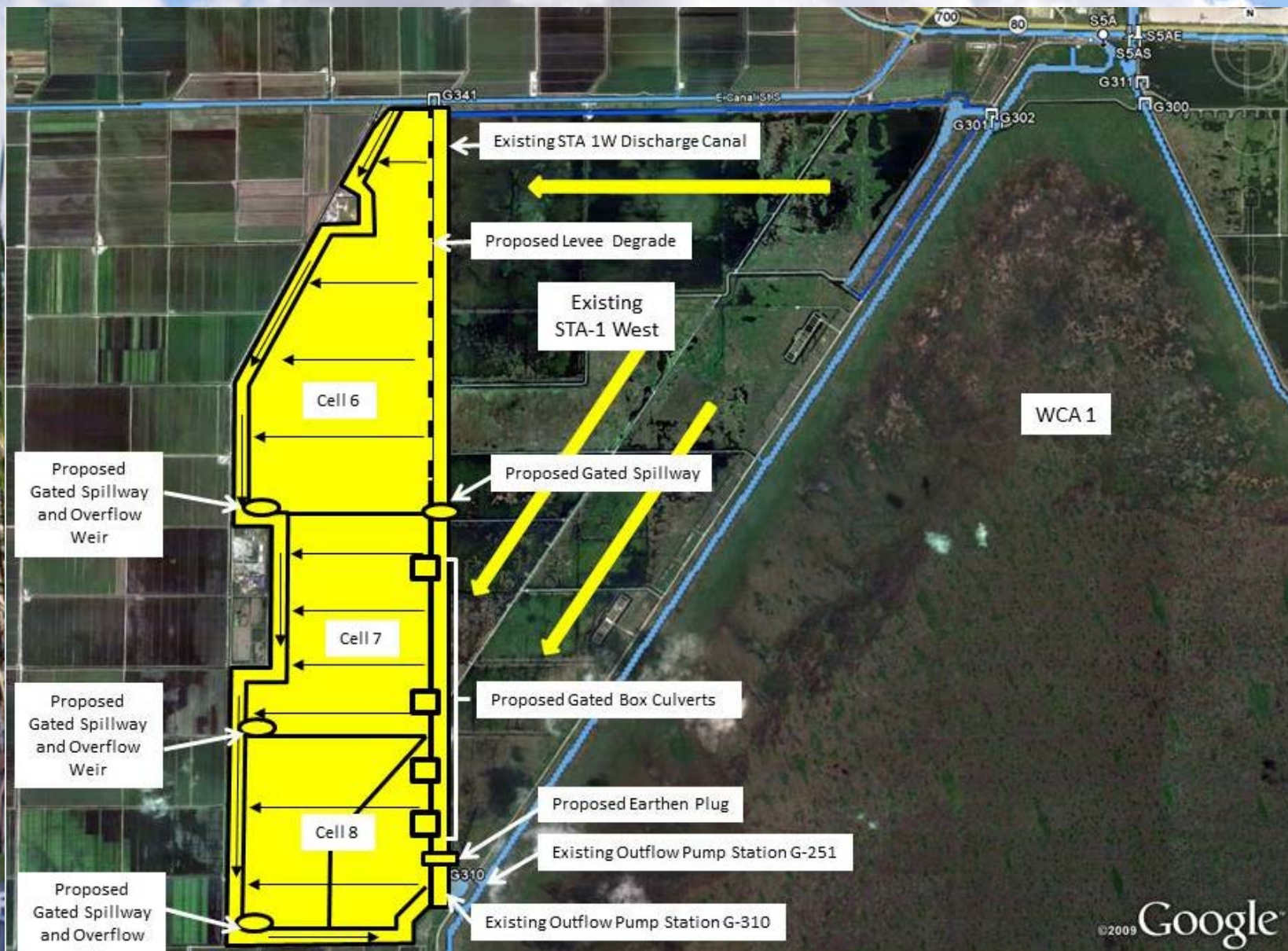
Milestone	Compliance date	Status
Initiate design	9/30/2013	Complete
Complete design	7/30/2015	Complete
Initiate construction	1/31/2016	Pending
Complete construction	12/31/2018	Pending

Quarterly Communications Meeting on the Long-Term Plan for Achieving Water Quality Goals for the Everglades Protection Area Tributary Basins

STA 1W Expansion # 1

September 4, 2015

STA 1W Expansion #1 – Location Map



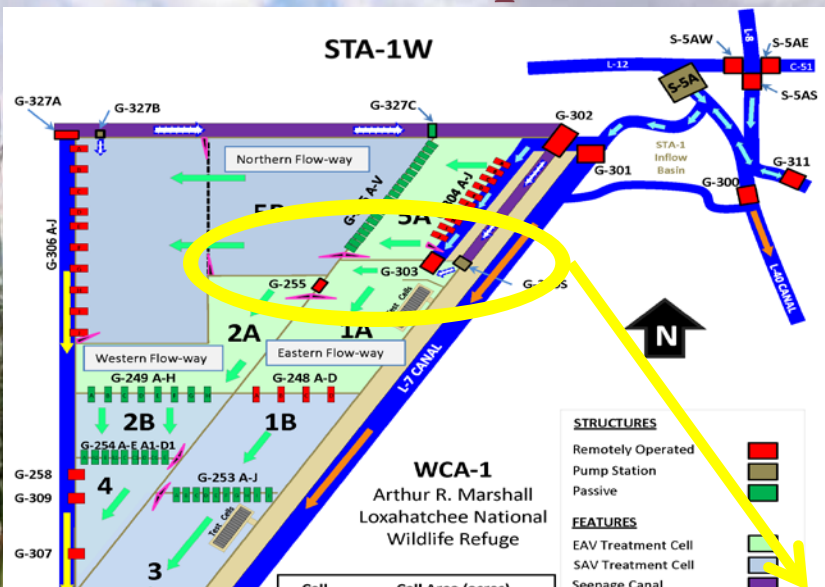
STA 1W Expansion #1

- Design and Construction Schedule:
 - Hydraulic Study – Complete
 - Preliminary Design Plan Set – Complete
 - Preliminary Design Full Submittal – Complete
 - Intermediate Design Submittal – Complete
 - Final Design Submittal – Complete
 - Final Design TRB – Complete
 - Corrected Final/RTA Design Submittal – Complete
 - Governing Board – October 8, 2015
 - NTP – January 31, 2016
 - Substantial Completion – September 30, 2018
 - Final Completion – December 31, 2018

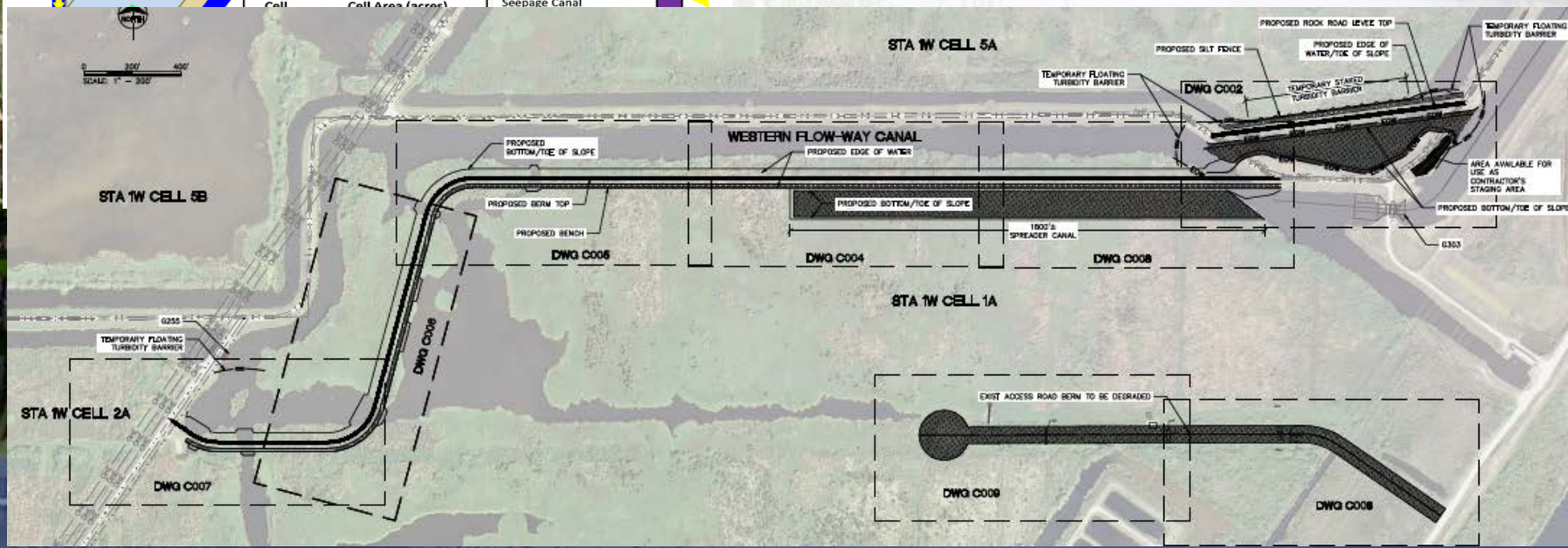
Milestones

Milestone	Compliance date	Status
Complete land acquisition	9/30/2013	Complete
Initiate design	9/30/2013	Complete
Submit state and federal permits	7/30/2014	Complete
Complete design	7/30/2015	Complete
Initiate construction	1/31/2016	Pending
Construction status report	3/1/2017	Pending
Construction status report	3/1/2018	Pending
Completion of construction	12/31/2018	Pending
Initial flooding and optimization complete	12/30/2020	Pending

Exist. STA Improvements Independent Western Flow way



- Provide the Western Flow-way with an independent inflow source
- Construction of approx. 5,000 linear feet of levees and berms
- Use existing G-255 and G-303 Structures
- Project Complete - August 2015



Exist. STA Improvements Independent Western Flow way



New Western Flow-Way Inflow Canal & New Cell 1A Embankment



New Western Flow-Way Inflow Canal & Cell 5A Embankment