

# Quarterly Communications Meeting Long-Term Plan for Achieving Water Quality Goals for the Everglades Protection Area Tributary Basins

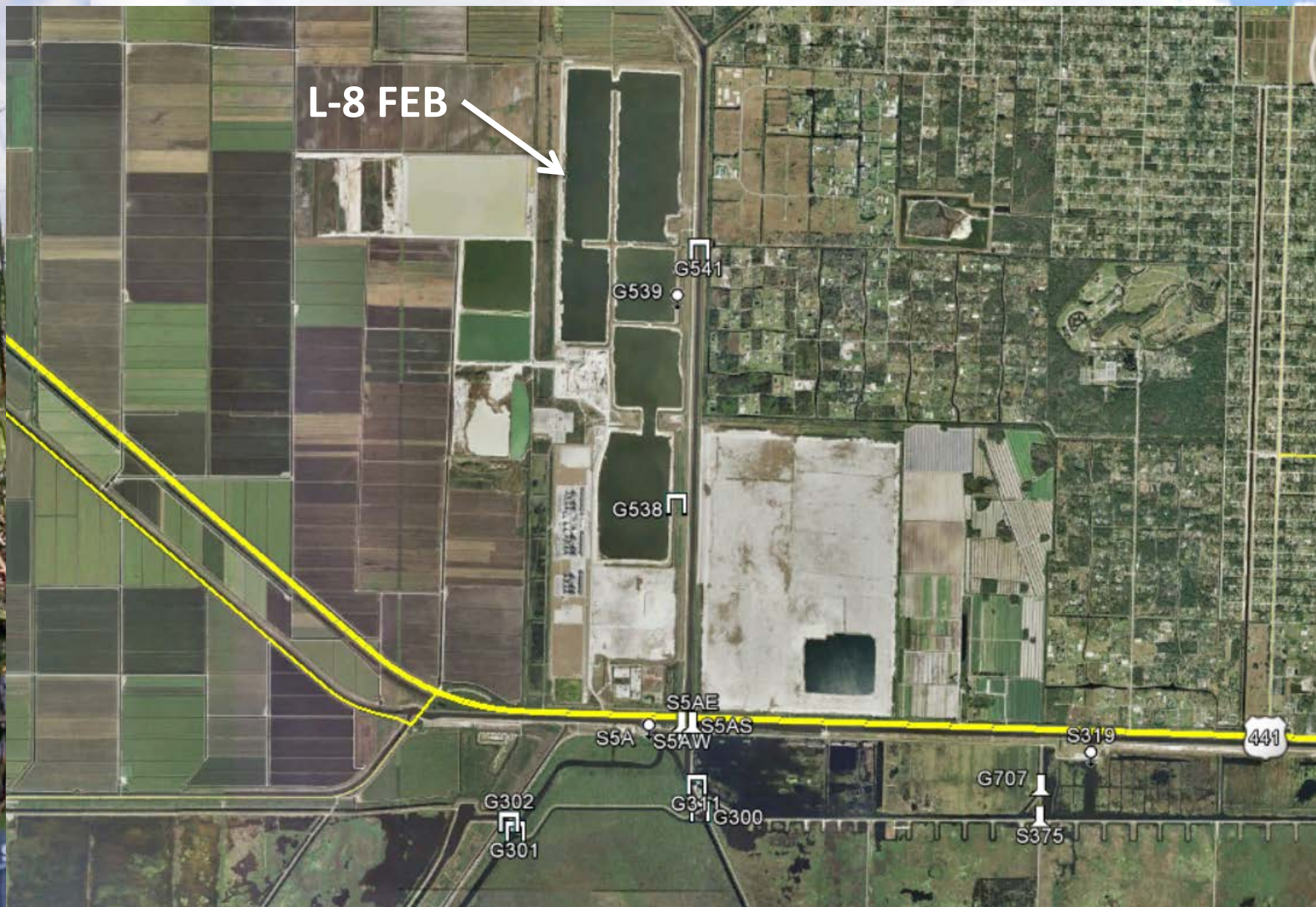
Lucine Dadrian, P.E.  
Section Administrator  
Project Management

March 3, 2017

# Restoration Strategies Project Summary

Project	Construction Completion Deadline	Status
S-5AS Modifications	9/30/2016	Completed 5/28/2016
L-8 Flow Equalization Basin	12/31/2016	Pending
L-8 Divide Structure (G-541)	9/30/2018	Completed 7/7/2016
S-375 Expansion (G-716)	12/31/2018	Pending
STA-1W Expansion #1	12/31/2018	Pending
G-341 Related Conveyance Improvements	12/31/2024	Pending

# L-8 Flow Equalization Basin



G-538 Inflow Structure



All Cells: -24.1' NAVD  
February 28 , 2017



**G-539 Pump Station**

# L-8 Flow Equalization Basin

- **Governing Board Approval** Complete
- **Notice to Proceed** Complete
- **Preliminary Design (Revetment)** Complete
- **Preliminary Design (Pump and Inflow)** Complete
- **Final Design (Revetment)** Complete
- **Final Design (Pump and Inflow)** Complete
- **Revetment Construction** Complete
- **Substantial Completion (SC)** April 18, 2015
  - **Partial SC – Inflow Gate Structure** July 14, 2016
  - **Partial SC – Exterior Levees** August 22, 2016
- **Final Completion** October 15, 2015

# L-8 Flow Equalization Basin

<b>Milestone</b>	<b>Deadline</b>	<b>Status</b>
<b>Submit state and federal permits</b>	<b>1/31/2014</b>	<b>Complete</b>
<b>Construction status report</b>	<b>3/1/2014</b>	<b>Complete</b>
<b>Construction status report</b>	<b>3/1/2015</b>	<b>Complete</b>
<b>Completion of construction</b>	<b>12/31/2016</b>	<b>Pending</b>
<b>Long term operations commence</b>	<b>12/31/2022</b>	<b>Pending</b>

# S-375 Expansion (G-716)



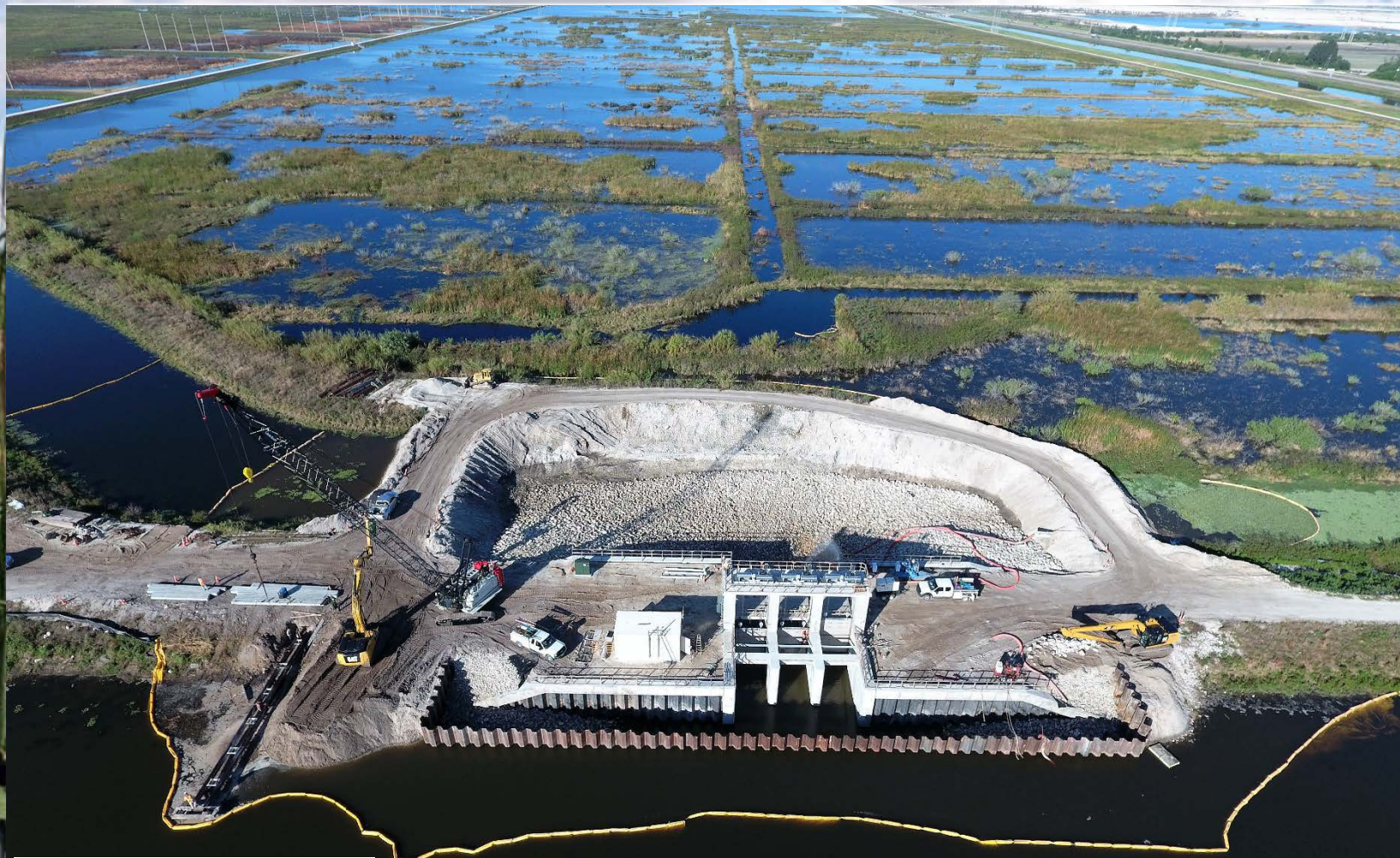


# S-375 Expansion (G-716)



East Aerial View

# S-375 Expansion (G-716)



West Aerial View

# S-375 Expansion (G-716)



Setting Gate #1

# S-375 Expansion (G-716)

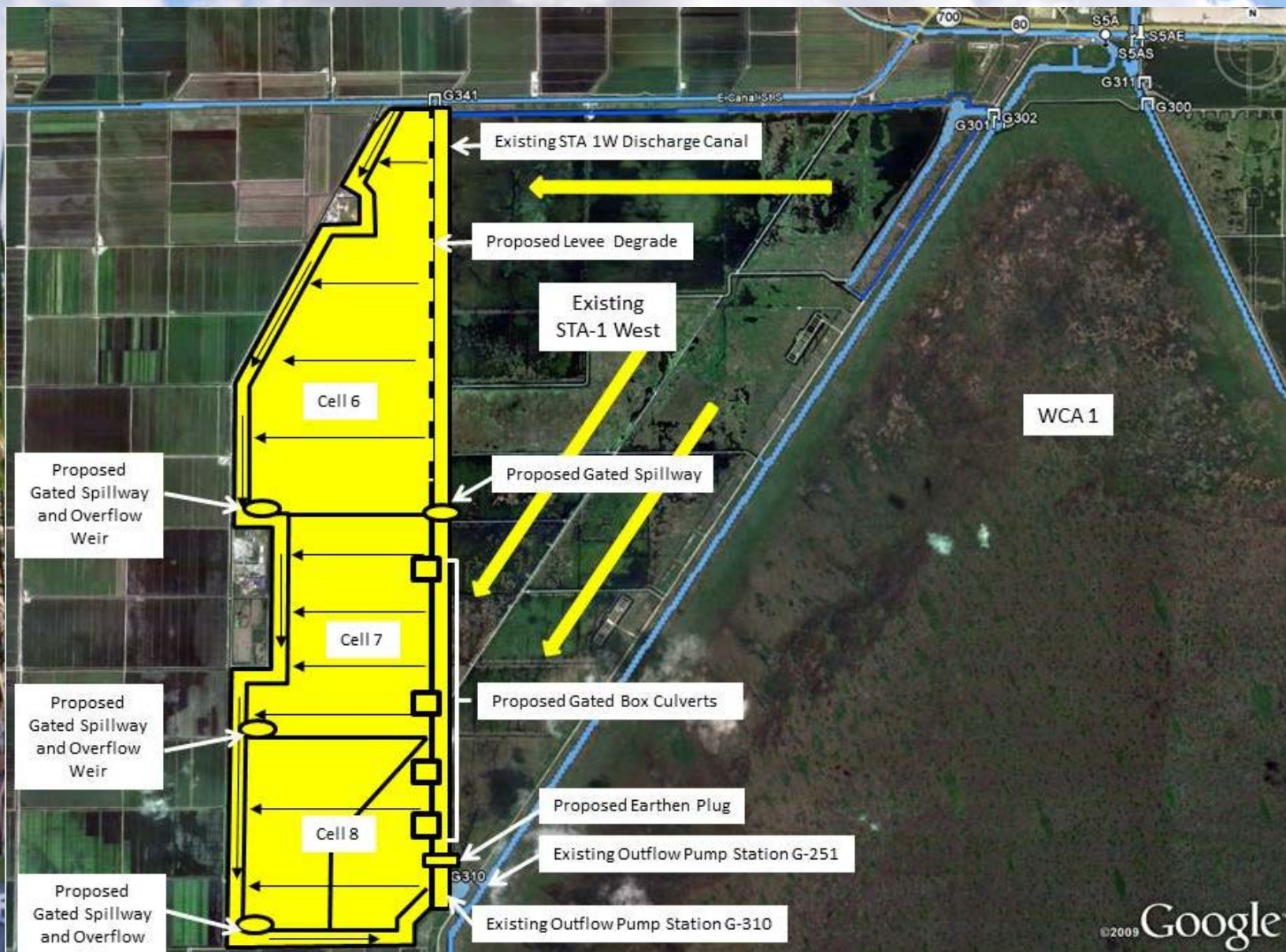
## Design and Construction Schedule

- **Structure Type Evaluation** **Complete**
- **Structure Flow Calculations** **Complete**
- **Preliminary Design** **Complete**
- **Final Design** **Complete**
- **Governing Board Approval** **Complete**
- **Notice to Proceed** **Complete**
- **Substantial Completion** **April 7, 2017**
- **Final Acceptance** **June 6, 2017**

# S-375 Expansion (G-716)

Milestone	Deadline	Status
Initiate design	9/30/2013	Complete
Complete design	7/30/2015	Complete
Initiate construction	1/31/2016	Complete
Completion of construction	12/31/2018	Pending

# STA-1W Expansion #1



# STA-1W Expansion #1



**Canal and Embankment Construction**

# STA-1W Expansion #1



**G-728 Structure Construction**



# STA-1W Expansion #1



**Discharge Canal Blasting**

# STA-1W Expansion #1

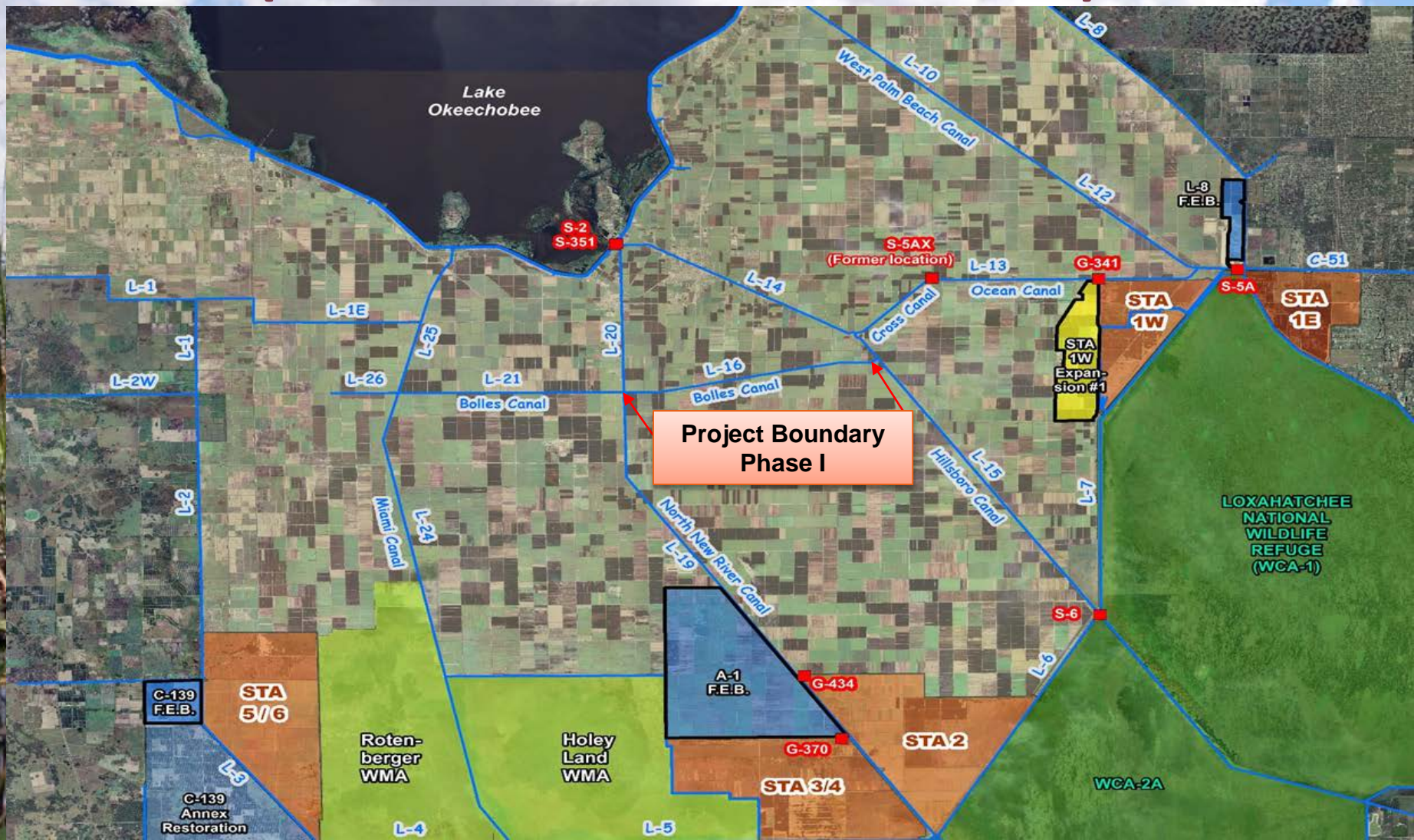
## Design and Construction Schedule

- **Hydraulic Study** Complete
- **Preliminary Design** Complete
- **Intermediate Design** Complete
- **Final Design** Complete
- **Governing Board Approval** Complete
- **Notice to Proceed** Complete
- **Substantial Completion** September 20, 2018
- **Final Completion** December 14, 2018

# STA-1W Expansion #1

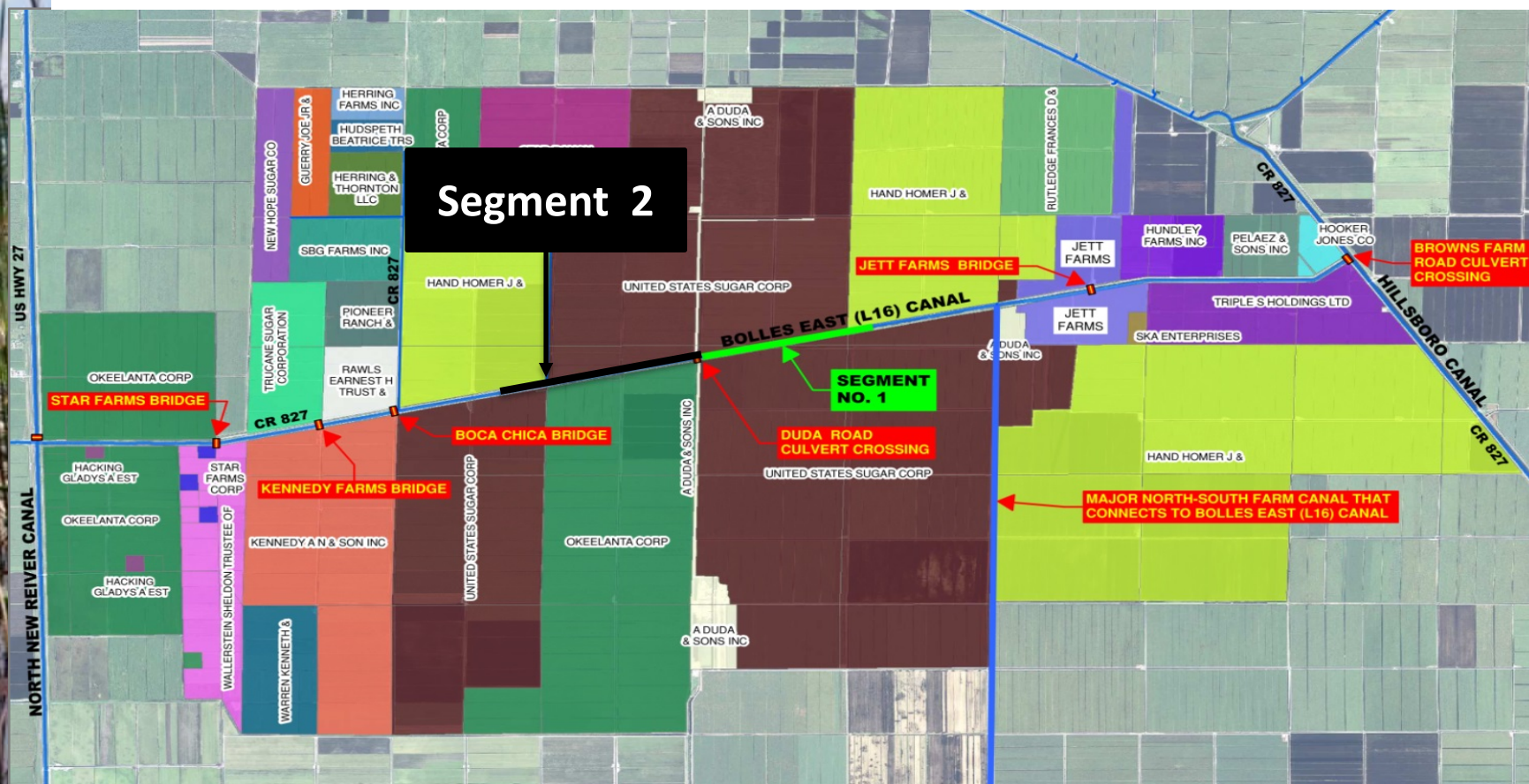
Milestone	Deadline	Status
Complete land acquisition	9/30/2013	Complete
Initiate design	9/30/2013	Complete
Submit state and federal permits	7/30/2014	Complete
Complete design	7/30/2015	Complete
Initiate construction	1/31/2016	Complete
Construction status report	3/1/2017	Complete
Construction status report	3/1/2018	Pending
Completion of construction	12/31/2018	Pending
Initial flooding and optimization complete	12/30/2020	Pending

# G-341 Related Conveyance Improvements (Phase 1 - Bolles East Canal)



# G-341 Related Conveyance Improvements (Phase 1 - Bolles East Canal)

Segment 2 – Construction Kick Off – July 2016  
Construction Completion – May 2017 (expected)



# Final Section of Segment 1/2

Before Construction



After Construction



New Canal Cross Section

# G-341 Related Conveyance Improvements (Phase 1 - Bolles East Canal)

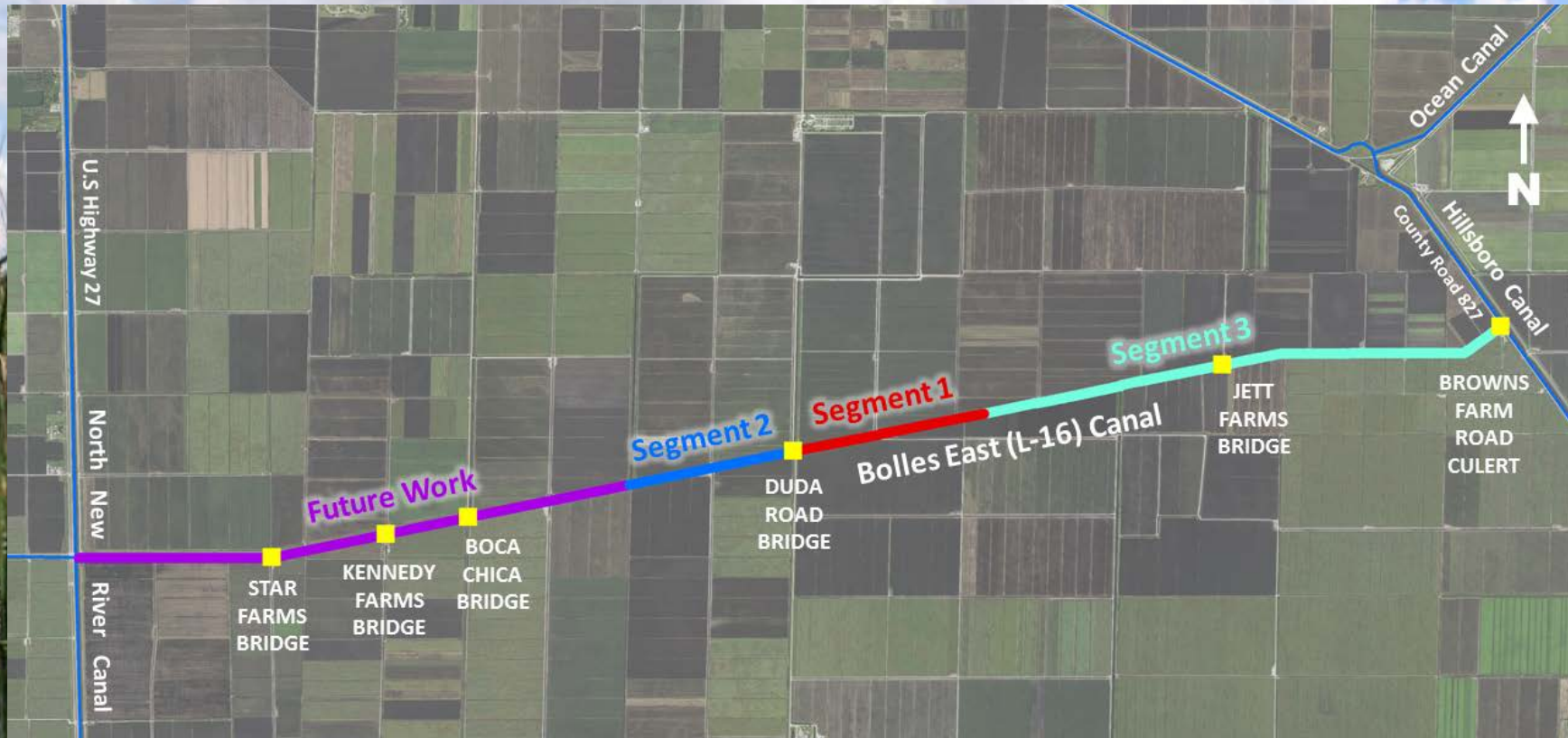
## Duda Bridge

District Cost Share Not to Exceed - \$1.1 Million

Construction Completion – September 2016



# G-341 Related Conveyance Improvements (Phase 1 - Bolles East Canal)



- Segment 3 - Consists of design of remaining 3.5 miles of the eastern end of the Bolles Canal
- Segment 3 Design Completion – April 2017
- Future Work – will consist of the remaining 3.5 miles of the western end of the Bolles Canal



# G-341 Related Conveyance Improvements (Phase 1 - Bolles East Canal)

## Design and Construction Schedule Phase 1

- |                                    |                |
|------------------------------------|----------------|
| • Design of Segment 1              | Complete       |
| • Design of Segment 2              | Complete       |
| • Segment 1 Construction           | Complete       |
| • Duda Bridge Replacement          | Complete       |
| • Segment 2 Notice to Proceed      | July 2016      |
| • Segment 2 Substantial Completion | March 31, 2017 |
| • Segment 2 Final Completion       | May 30, 2017   |
| • Segment 3 Final Design           | April 2017     |

## Construction Activities Segment 2

- |                         |              |
|-------------------------|--------------|
| • Farm Ditch            | 95% Complete |
| • Farm Road             | 95% Complete |
| • Excavation Main Canal | 85% Complete |

# G-341 Related Conveyance Improvements

Milestone	Deadline	Status
Complete land acquisition	9/30/2021	Pending
Initiate Design	10/1/2020	Complete
Submit state and federal permits	8/1/2021	Complete
Complete design	7/31/2022	Pending
Initiate construction	11/30/2022	Complete
Construction status report	3/1/2023	Pending
Construction status report	3/1/2024	Pending
Completion of construction	12/31/2024	Pending