

# Quarterly Communications Meeting on the Long-Term Plan for Achieving Water Quality Goals for the Everglades Protection Area Tributary Basins

## L-8 Flow Equalization Basin

June 2016

**Matt Alexander, P.E.**  
**Section Leader**  
**Project Management**

# G-538 Inflow Gate Station



**All Cells: +11.3' NAVD**

**May 24, 2016**



## G-539 Pump Station

# Design/Build Schedule

- **Governing Board Approval** Completed
- **NTP** Completed
- **Preliminary Design (Revetment)** Completed
- **Preliminary Design (Pump and Inflow)** Completed
- **Final Design (Revetment)** Completed
- **Final Design (Pump and Inflow)** Completed
- **Revetment Construction** Completed
- **Substantial Completion** April 18, 2015
- **Final Completion** October 15, 2015

# Milestones

Milestone	Compliance date	Status
Submit state and federal permits	1/31/2014	Complete
Construction status report	3/1/2014	Complete
Construction status report	3/1/2015	Complete
Completion of construction	12/31/2016	Pending
Long term operations	12/31/2022	Pending

# Quarterly Communications Meeting on the Long-Term Plan for Achieving Water Quality Goals for the Everglades Protection Area Tributary Basins

## G-541/L-8 Divide Structure

June 2016

**Matt Alexander, P.E.**  
**Section Leader**  
**Project Management**

# G-541/L-8 Divide Structure,



L-8 Divide Structure

L-8 FEB Pump Station

L-8 FEB Inflow Structure



# L-8 Divide Structure, G-541



# L-8 Divide Structure

- Design: Completed
- Construction Schedule:
  - Notice to Proceed: October 15, 2014
  - Project Substantial Completion: March 29, 2016
  - Project Final Completion: May 28, 2016
- Construction activities:
  - Bypass Channel: Backfilled
  - Slab and Walls: Completed
  - Service Bridge Pour: Completed
  - Control Building: Placed
  - Gate Installation: Completed
  - Electrical: In progress

# Milestones

<b>Milestone</b>	<b>Compliance date</b>	<b>Status</b>
Initiate design	10/1/2012	Complete
Complete design	9/30/2014	Complete
Initiate construction	10/1/2016	Complete
Complete construction	9/30/2018	Pending

# Quarterly Communications Meeting on the Long-Term Plan for Achieving Water Quality Goals for the Everglades Protection Area Tributary Basins

## S-5AS Divide Structure

June 2016

**Matt Alexander, P.E.**  
**Section Leader**  
**Project Management**

# S-5AS Divide Structure



# S-5AS Divide Structure



# S-5AS Divide Structure



## S-5AS Divide Structure



# S-5AS Divide Structure

## •Design and Construction Schedule:

- Comprehensive Fluid Dynamic Model: Complete
- Structure Stability Review: Complete
- Preliminary design due: Complete
- Final design package due: Complete
- Project out for Bid: Complete
- Governing Board Approval : Complete
- Notice to Proceed : Complete
- Project Substantial Completion : May 28, 2016
- Project Final Acceptance: July 27, 2016



# S-5AS Divide Structure Milestones

<b>Milestone</b>	<b>Compliance date</b>	<b>Status</b>
Initiate design	10/1/2012	Complete
Complete design	9/30/14	Complete
Initiate construction	10/1/14	Complete
Complete construction	9/30/16	Pending

# Quarterly Communications Meeting on the Long-Term Plan for Achieving Water Quality Goals for the Everglades Protection Area Tributary Basins

## G-716 Structure

June 2016

**Matt Alexander, P.E.**  
**Section Leader**  
**Project Management**

# G-716 Structure



Imagery Date: Nov 23, 2010

2011 Palm Beach County Aerial Photography  
26°41'15.91" N 80°20'58.74" W elev 20 ft

Eye alt 20450 ft

# G-716 Structure



# G-716 Structure



# G-716 Structure

## •Design and Construction Schedule:

- **Structure Type Evaluation:** Complete
- **Structure Flow Calculations :** Complete
- **Preliminary design due:** Complete
- **Final design package due:** Complete
- **Project out for Bid:** Complete
- **Governing Board Approval:** Complete
- **Notice to Proceed:** Complete
- **Project Substantial Completion:** April 7, 2017
- **Project Final Acceptance:** June 6, 2017

# G-716 Structure

<b>Milestone</b>	<b>Compliance date</b>	<b>Status</b>
Initiate design	9/30/2013	Complete
Complete design	7/30/2015	Complete
Initiate construction	1/31/2016	Complete
Complete construction	12/31/2018	Pending

# Quarterly Communications Meeting on the Long-Term Plan for Achieving Water Quality Goals for the Everglades Protection Area Tributary Basins

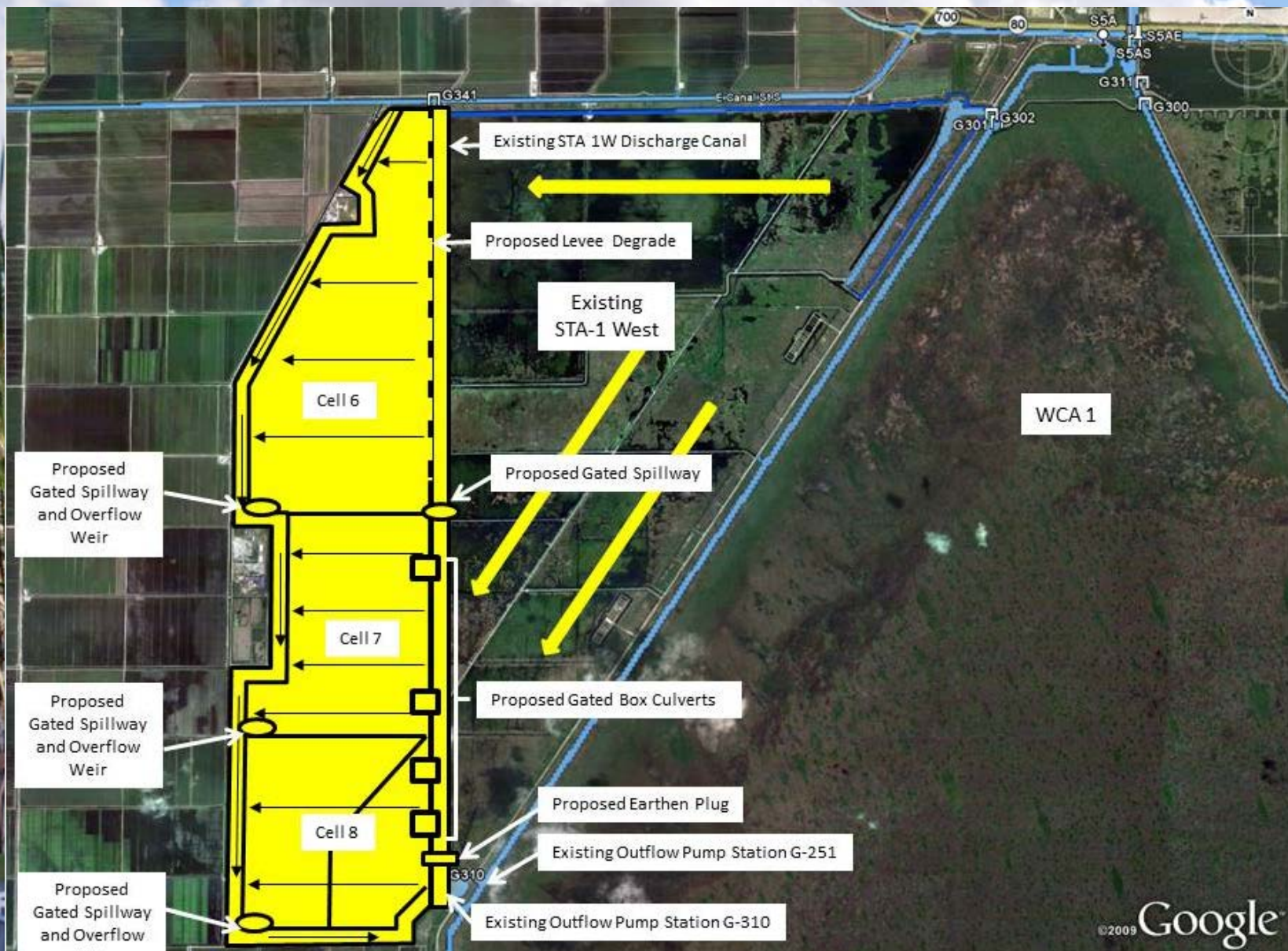
## STA 1W Expansion #1

June 2016

***Matt Alexander, P.E.***  
***Section Leader***  
***Project Management***



# STA 1W Expansion #1 – Location Map



# STA 1W Expansion #1 Progress Pictures



Blasting New Spreader Canal



New Spreader Canal Excavation

# STA 1W Expansion #1 Progress Pictures



G-728 Cofferdam Installation

## STA 1W Expansion #1

- Design and Construction Schedule:
  - Hydraulic Study: Complete
  - Preliminary Design Plan Set: Complete
  - Preliminary Design Full Submittal: Complete
  - Intermediate Design Submittal: Complete
  - Final Design Submittal: Complete
  - Final Design TRB: Complete
  - Corrected Final/RTA Design Submittal: Complete
  - Governing Board: Complete
  - NTP: Complete
  - Substantial Completion: September 20, 2018
  - Final Completion: December 14, 2018

# Milestones

Milestone	Compliance date	Status
Complete land acquisition	9/30/2013	Complete
Initiate design	9/30/2013	Complete
Submit state and federal permits	7/30/2014	Complete
Complete design	7/30/2015	Complete
Initiate construction	1/31/2016	Complete
Construction status report	3/1/2017	Pending
Construction status report	3/1/2018	Pending
Completion of construction	12/31/2018	Pending
Initial flooding and optimization complete	12/30/2020	Pending

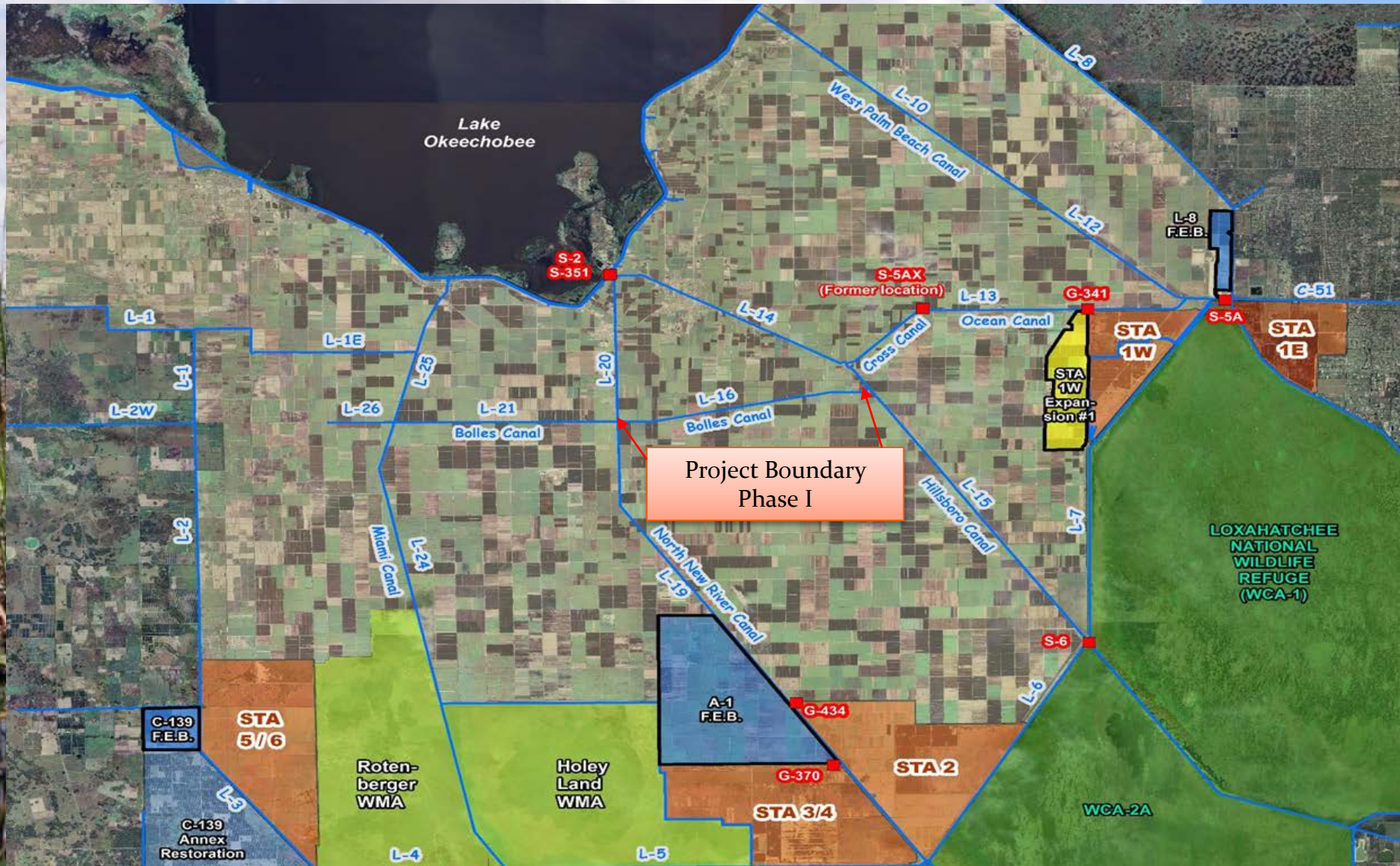
# Quarterly Communications Meeting on the Long-Term Plan for Achieving Water Quality Goals for the Everglades Protection Area Tributary Basins

## RS G-341 Bolles Canal – Phase I Project – Segment 1, Segment 2, Bridge Replacement

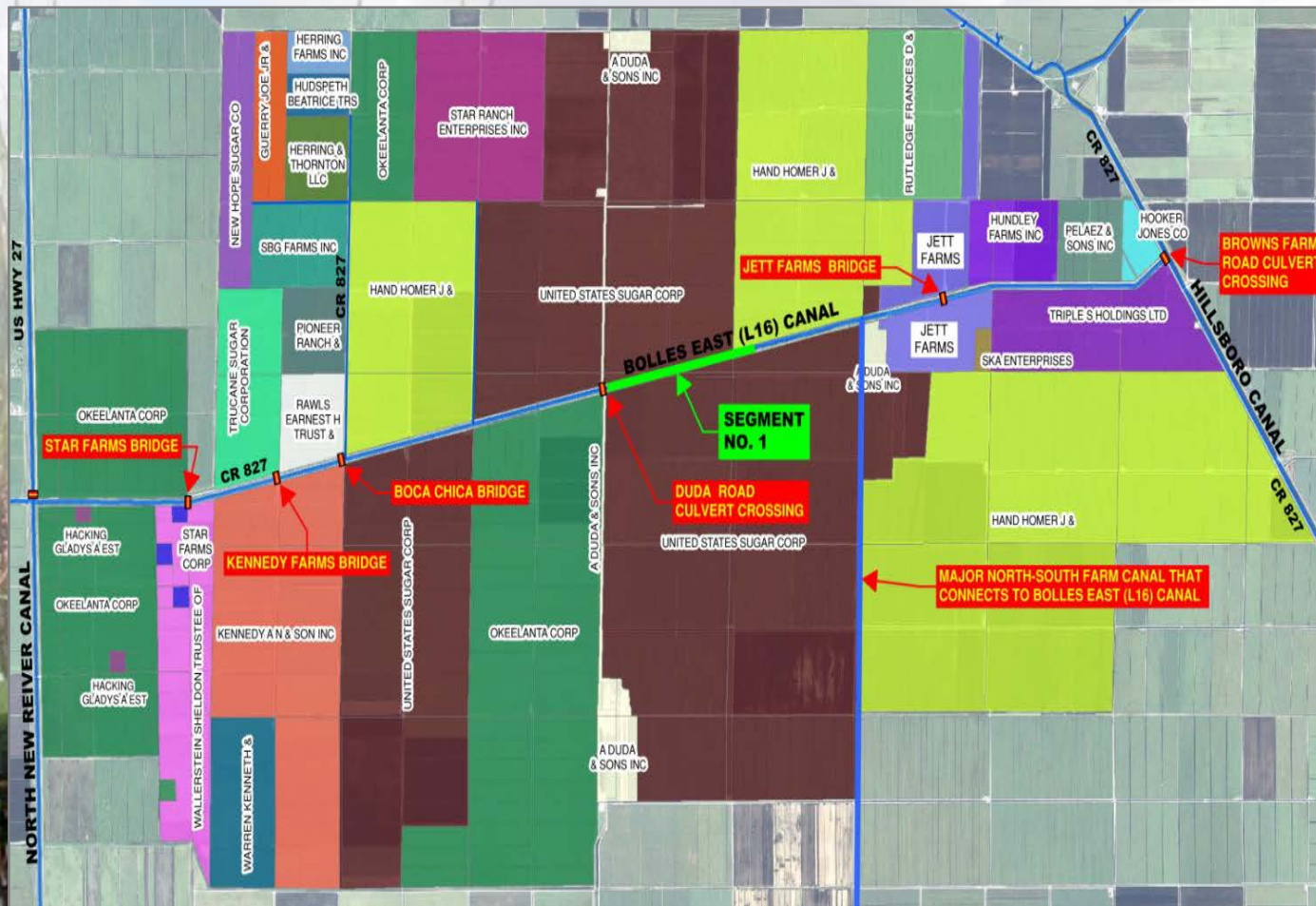
June 2016

*Matt Alexander, P.E.  
Section Leader  
Project Management*

# RS-G341 Bolles Canal-Phase I



# RS-G341 Bolles Canal-Phase I – Segment 1





# Final Section of Segment 1 of the Bolles Canal

Before Construction



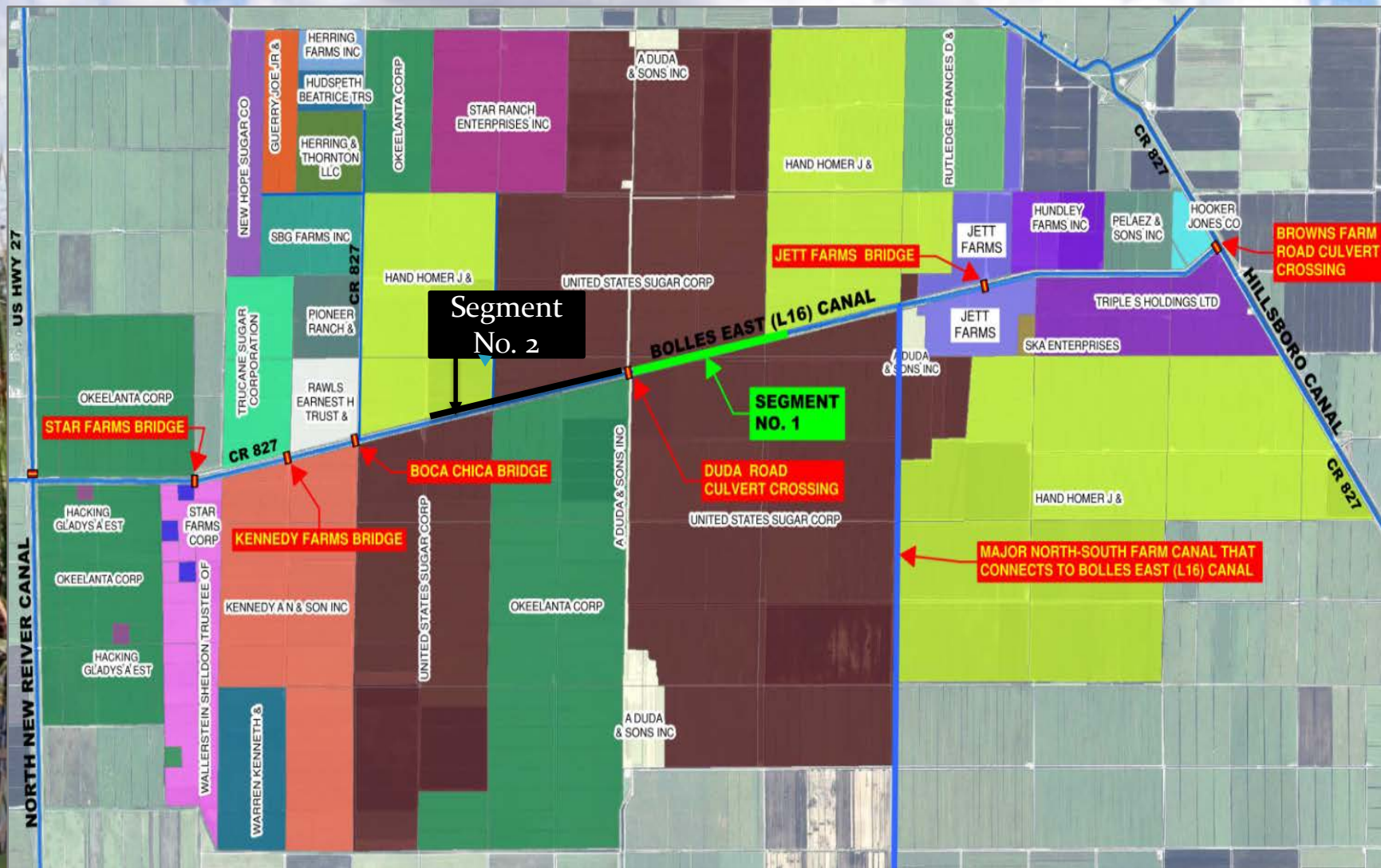
After Construction



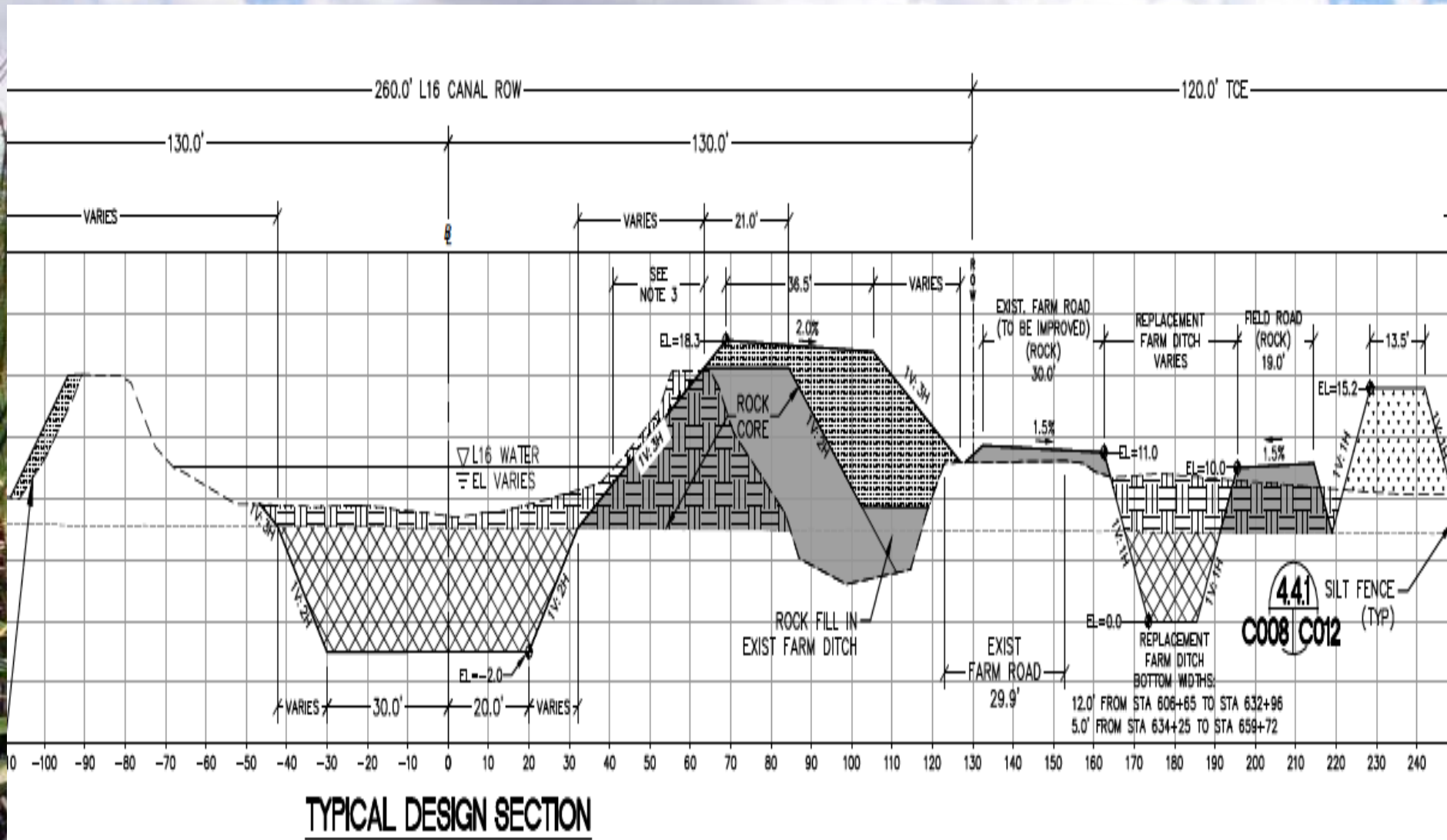
New Canal Cross Section



# RS-G341 Bolles Canal-Phase I – Segment 2



# Typical Cross Section for Segment 2



# RS G-341 Bolles Canal – Phase I Project

## Design of Phase I:

- **Segment 1:** Completed
- **Segment 2 Final Design:** Completed
- **Duda Bridge Agreement:** Completed February 2016 GB
- **Duda Bridge Design:** Completed May 2016

## Construction Schedule Segment 1:

- **Notice to Proceed:** September 14, 2015
- **Project Substantial Completion:** September 13, 2016
- **Project Final Completion:** November 12, 2016

## Construction Schedule Segment 2:

- **Notice to Proceed:** July 2016
- **Project Substantial Completion:** March 31, 2017
- **Project Final Completion:** May 30, 2017

## Construction activities Segment 1:

- **Farm Ditch:** 100% Completed
- **Farm Road:** 90% Completed
- **Bolles Canal Blasting and Excavation:** 90% Completed
- **Duda Bridge Replacement:** 5% Completed

# Milestones

Complete land acquisition	9/30/2021	Pending
Initiate Design	10/1/2020	Complete
Submit state and federal permits	8/1/2021	Pending
Complete design	7/31/2022	Pending
Initiate construction	11/30/2022	Complete
Construction status report	3/1/2023	Pending
Construction status report	3/1/2024	Pending
Completion of construction	12/31/2024	Pending