

Quarterly Communications Meeting on the Long-Term Plan for Achieving Water Quality Goals for the Everglades Protection Area Tributary Basins
A-1 Flow Equalization Basin (FEB)

December 2015

Alan Shirkey, P.E.
Section Administrator
Project Management

A-1 FEB Start-Up

Initial Start Up and Water Quality Dates - Week of:

8/17/15	Initial Filling Commenced
9/14/15	Sampling for Mercury & Other Toxicants
9/21/15	1st Sampling for TP Inflow vs. Potential Outflow
9/28/15	2nd Sampling for TP Inflow vs. Potential Outflow
10/5/15	3rd Sampling for TP Inflow vs. Potential Outflow
10/12/15	4th Sampling for TP Inflow vs. Potential Outflow
11/20/15	Comply with Water Quality: off-site discharge may commence to STA 3/4



A-1 FEB

- Design and Construction Schedule:
 - Preliminary Design – Completed
 - Intermediate Design Submittal – Completed
 - Final Design Submittal – Completed
 - Final Design TRB – Completed
 - Corrected Final/RTA Design Submittal – Completed
 - Governing Board – Completed
 - NTP – Completed
 - Substantial Completion – Complete
 - Final Completion – September 3, 2015

Milestones

Milestone	Compliance date	Status
Initiate design	4/1/2012	Complete
Submit state and federal permits	12/1/2012	Complete
Design status report	3/1/2013	Complete
Complete design	8/1/2013	Complete
Initiate construction	6/30/2014	Complete
Construction status report	3/1/2015	Complete
Construction status report	3/1/2016	Pending
Completion of construction	7/30/2016	Complete
Initial flooding and optimization complete	7/29/2018	Pending

Quarterly Communications Meeting on the Long-Term Plan for Achieving Water Quality Goals for the Everglades Protection Area Tributary Basins

L-8 Flow Equalization Basin

December 2015

Alan Shirkey, P.E.
Section Administrator
Project Management

G-538 Inflow Gate Station



All Cells: +10.40' NAVD



G-539 Pump Station



Design/Build Schedule

- **Governing Board Approval** Completed
- **NTP** Completed
- **Preliminary Design (Revetment)** Completed
- **Preliminary Design (Pump and Inflow)** Completed
- **Final Design (Revetment)** Completed
- **Final Design (Pump and Inflow)** Completed
- **Revetment Construction –** Completed
- **Substantial Completion** April 18, 2015
- **Final Completion** October 15, 2015

Milestones

Milestone	Compliance date	Status
Submit state and federal permits	1/31/2014	Complete
Construction status report	3/1/2014	Complete
Construction status report	3/1/2015	Complete
Completion of construction	12/31/2016	Pending
Long term operations	12/31/2022	Pending

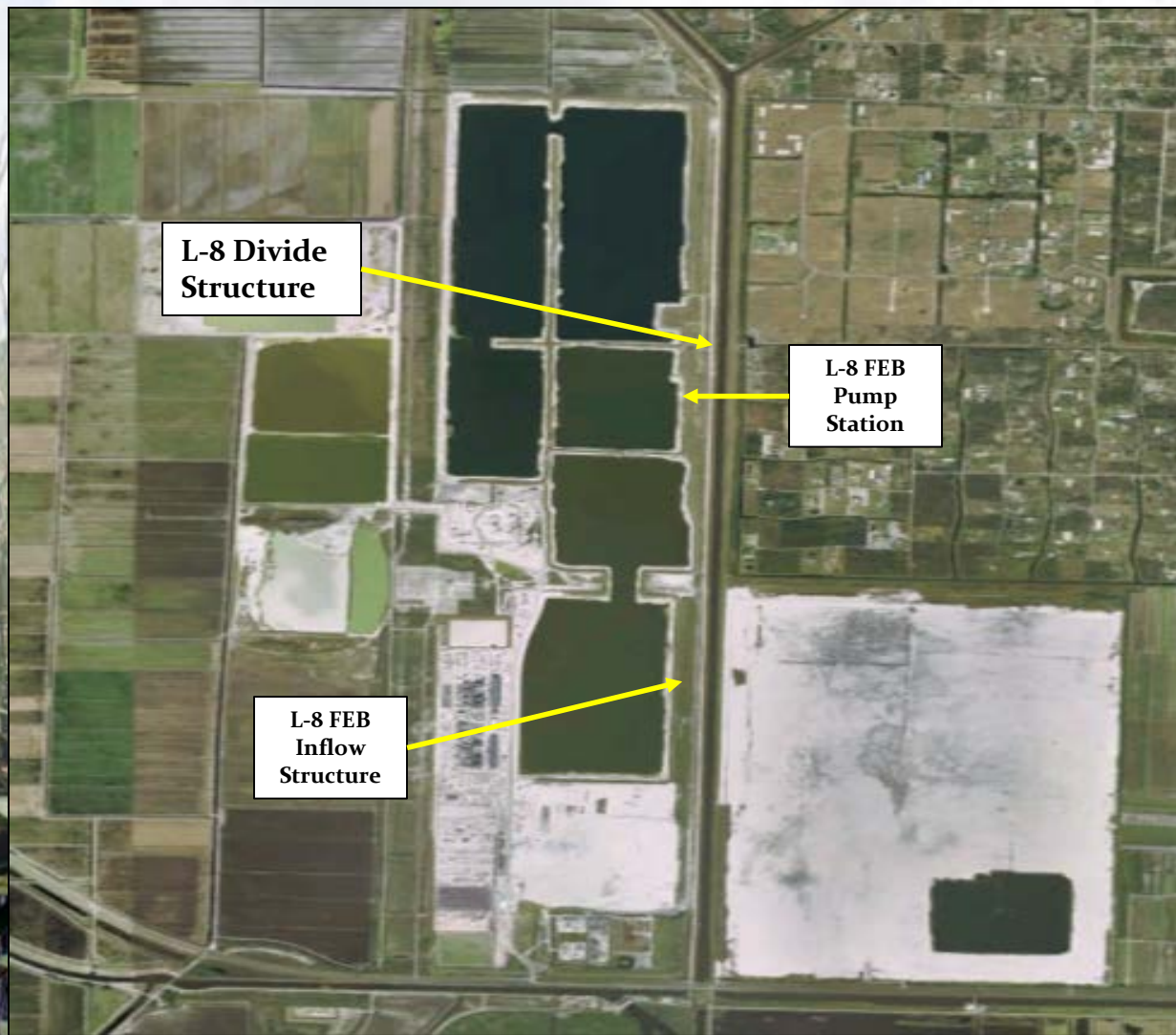
Quarterly Communications Meeting on the Long-Term Plan for Achieving Water Quality Goals for the Everglades Protection Area Tributary Basins

L-8 Divide Structure

December 2015

Alan Shirkey, P.E.
Section Administrator
Project Management

L-8 Divide Structure, G-541



L-8 Divide Structure, G-541

L-8 Divide Structure
G-541



North 



L-8 Divide Structure

- Design: Completed
- Construction Schedule:
 - Notice to Proceed: October 15, 2014
 - Project Substantial Completion: February 7, 2016
 - Project Final Completion: April 7, 2016
- Construction activities:
 - Bypass Channel – Completed
 - Slab and Walls – Completed
 - Service Bridge Pour - Completed

Milestones

Milestone	Compliance date	Status
Initiate design	10/1/2012	Complete
Complete design	9/30/2014	Complete
Initiate construction	10/1/2016	Complete
Complete construction	9/30/2018	Pending

Quarterly Communications Meeting on the Long-Term Plan for Achieving Water Quality Goals for the Everglades Protection Area Tributary Basins

S-5AS Divide Structure

December 2015

Alan Shirkey, P.E.
Section Administrator
Project Management

S-5AS Divide Structure



S-5AS Divide Structure



S-5AS Divide Structure



S-5AS Divide Structure

•Design and Construction Schedule:

- **Comprehensive Fluid Dynamic Model:** Complete
- **Structure Stability Review:** Complete
- **Preliminary design due:** Complete
- **Final design package due:** Complete
- **Project out for Bid:** Complete
- **Governing Board Approval :** Complete
- **Notice to Proceed :** Complete
- **Project Substantial Completion :** Feb 28, 2016
- **Project Final Acceptance:** April 28, 2016

S-5AS Divide Structure Milestones

Milestone	Compliance date	Status
Initiate design	10/1/2012	Complete
Complete design	9/30/14	Complete
Initiate construction	10/1/14	Complete
Complete construction	9/30/16	Pending

Quarterly Communications Meeting on the Long-Term Plan for Achieving Water Quality Goals for the Everglades Protection Area Tributary Basins

G-716 Structure

December 2015

Alan Shirkey, P.E.
Section Administrator
Project Management

G-716 Structure

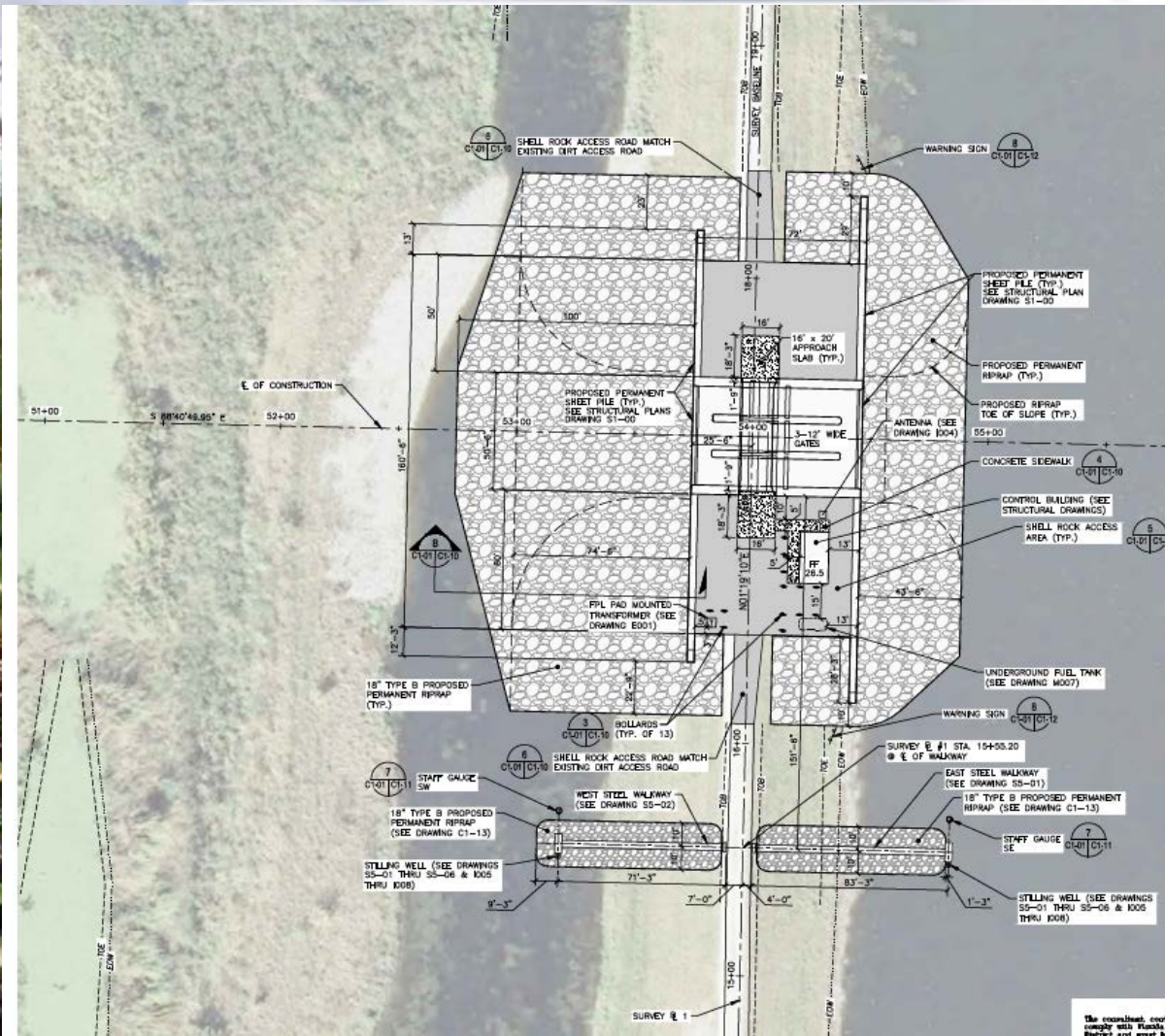


Imagery Date: Nov 23, 2010

2011 Palm Beach County Aerial Photography
26°41'15.91" N 80°20'58.74" W elev 20 ft

Eye alt 20450 ft

G-716 Structure



The consultant, architect or other parties herein comply with Florida Statute Chapter 118. These parties are not to be used and purchased by...

G-716 Structure

•Design and Construction Schedule:

- Structure Type Evaluation: Complete
- Structure Flow Calculations : Complete
- Preliminary design due: Complete
- Final design package due: Complete
- Project out for Bid: Complete
- Governing Board Approval: Complete
- Notice to Proceed: December 14, 2015
- Project Substantial Completion: April 7, 2017
- Project Final Acceptance: June 6, 2017

G-716 Structure

Milestone	Compliance date	Status
Initiate design	9/30/2013	Complete
Complete design	7/30/2015	Complete
Initiate construction	1/31/2016	Complete
Complete construction	12/31/2018	Pending

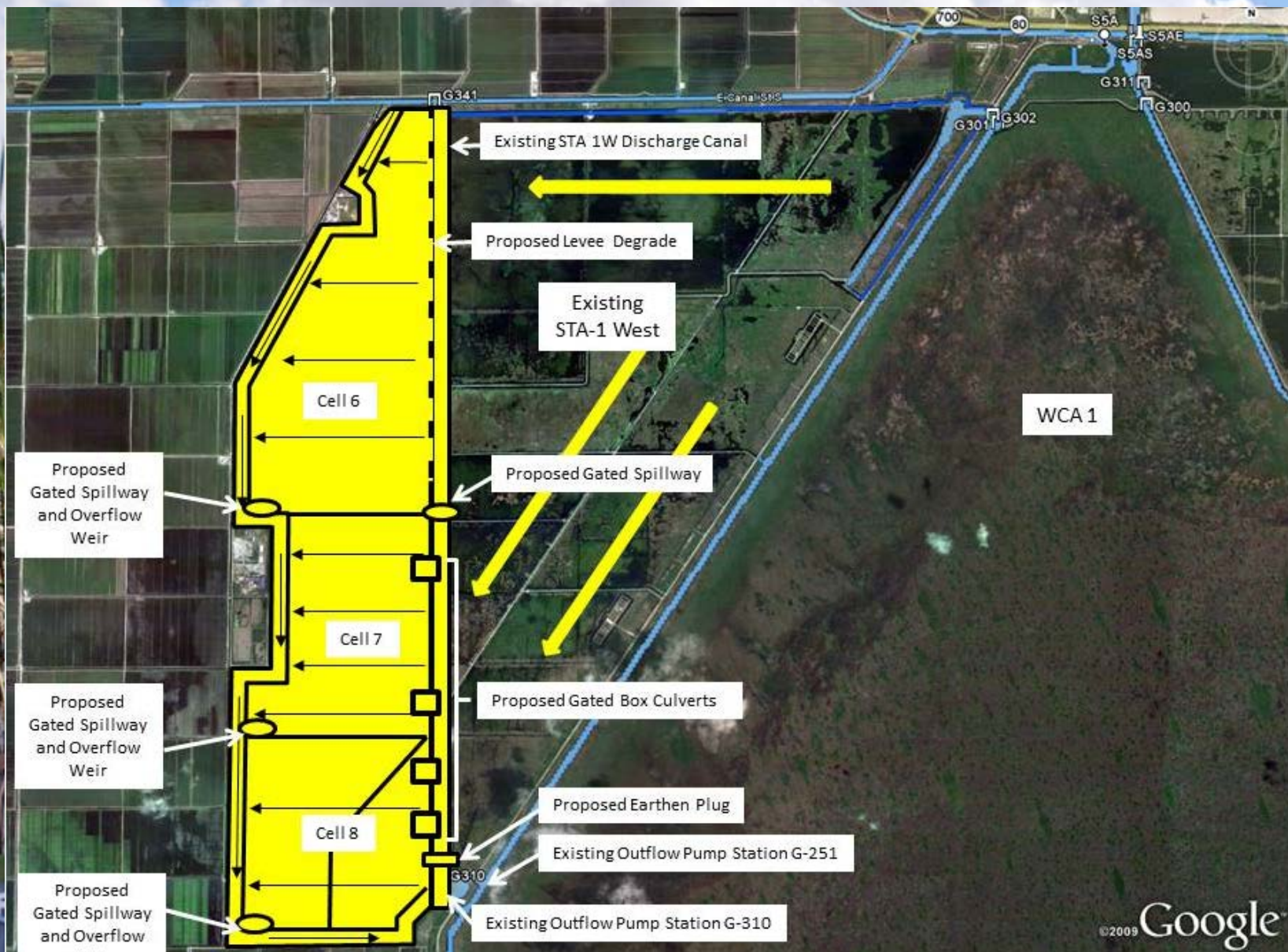
Quarterly Communications Meeting on the Long-Term Plan for Achieving Water Quality Goals for the Everglades Protection Area Tributary Basins

STA 1W Expansion #1

December 2015

Alan Shirkey, P.E.
Section Administrator
Project Management

STA 1W Expansion #1 – Location Map



STA 1W Expansion #1

- Design and Construction Schedule:
 - Hydraulic Study – Complete
 - Preliminary Design Plan Set – Complete
 - Preliminary Design Full Submittal – Complete
 - Intermediate Design Submittal – Complete
 - Final Design Submittal – Complete
 - Final Design TRB – Complete
 - Corrected Final/RTA Design Submittal – Complete
 - Governing Board Construction Contract Award - Complete
 - NTP – January 31, 2016
 - Substantial Completion – September 30, 2018
 - Final Completion – December 31, 2018

Milestones

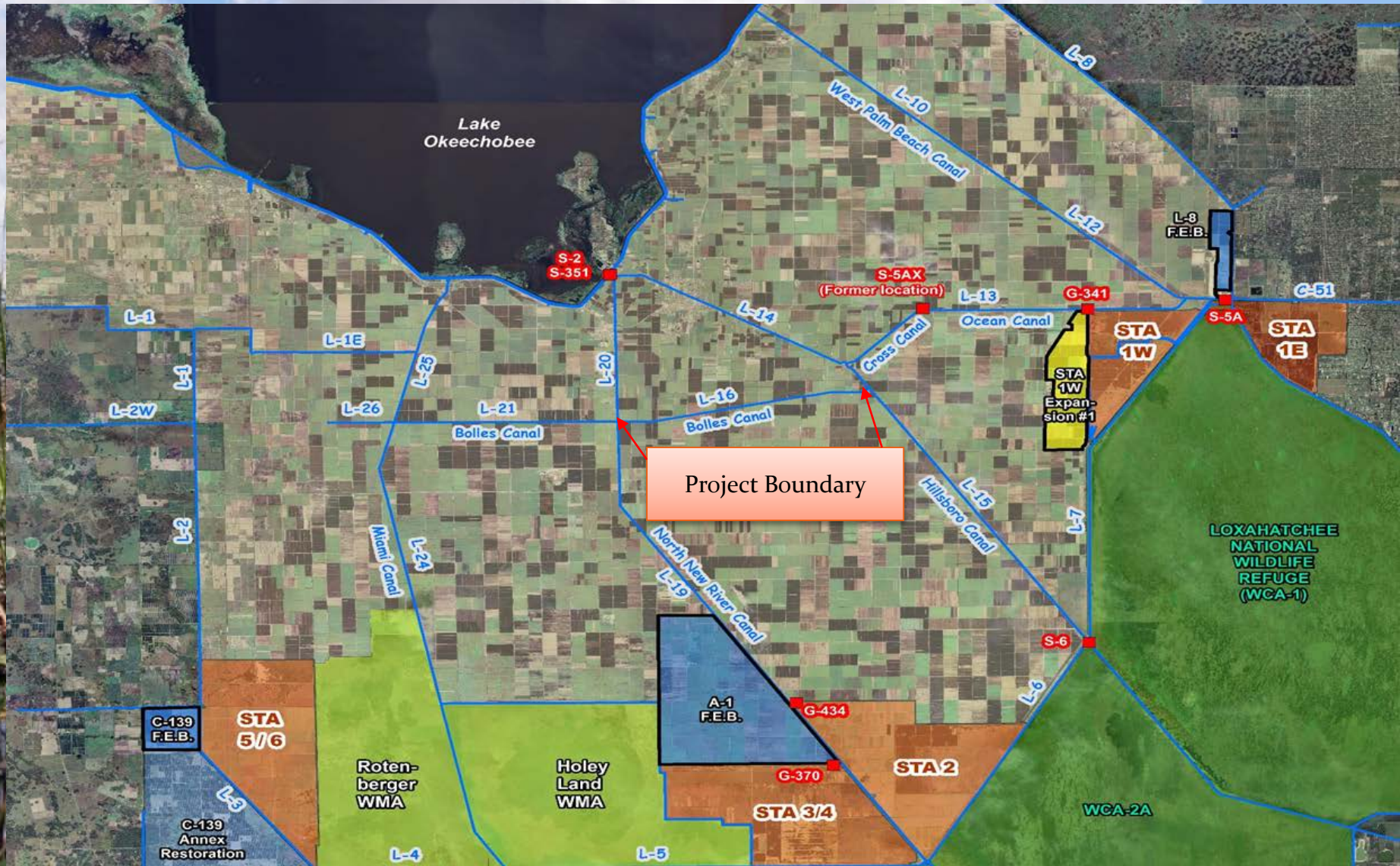
Milestone	Compliance date	Status
Complete land acquisition	9/30/2013	Complete
Initiate design	9/30/2013	Complete
Submit state and federal permits	7/30/2014	Complete
Complete design	7/30/2015	Complete
Initiate construction	1/31/2016	Complete
Construction status report	3/1/2017	Pending
Construction status report	3/1/2018	Pending
Completion of construction	12/31/2018	Pending
Initial flooding and optimization complete	12/30/2020	Pending

Quarterly Communications Meeting on the Long-Term Plan for Achieving Water Quality Goals for the Everglades Protection Area Tributary Basins
G-341 Conveyance Improvements – L16 Canal

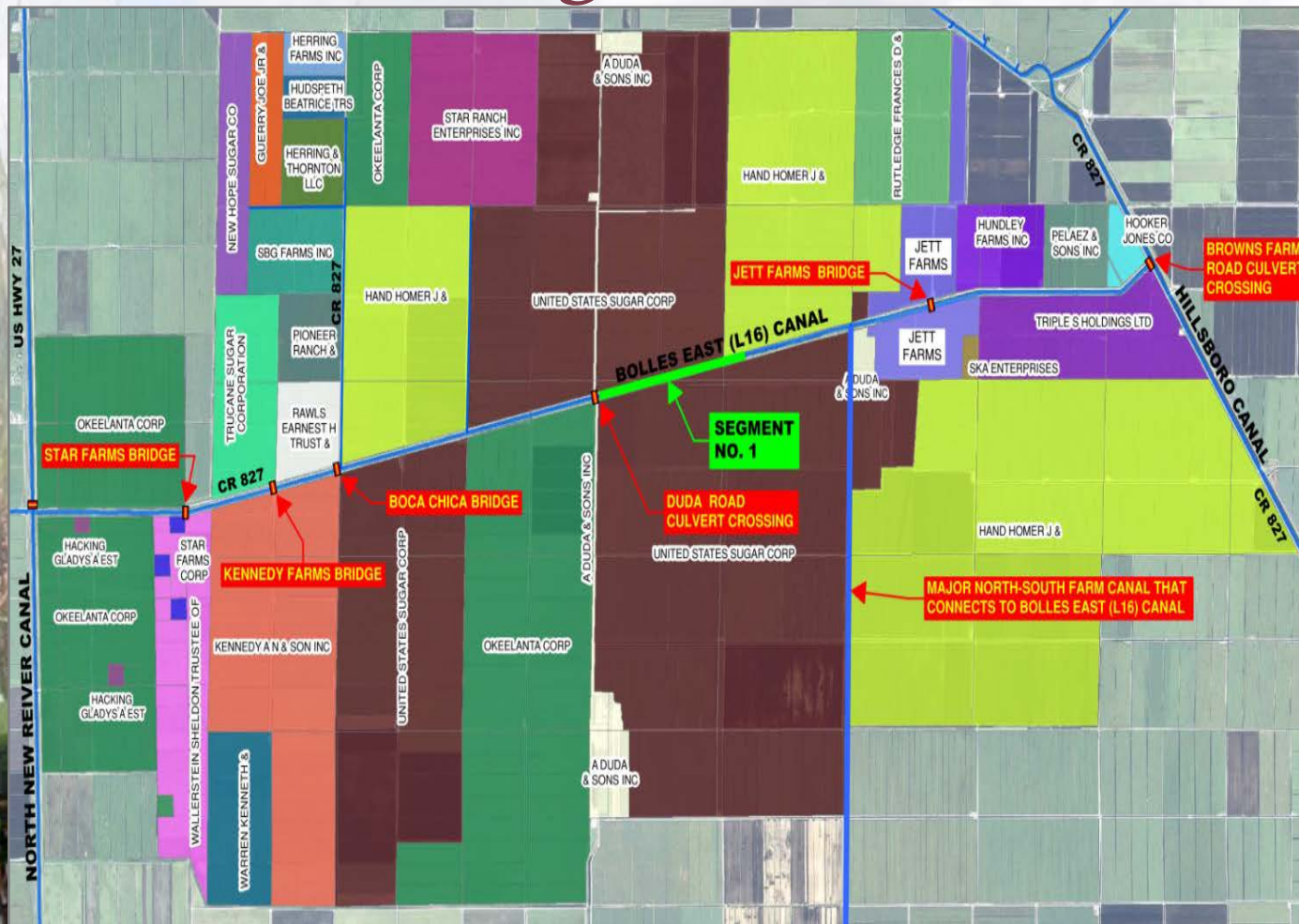
December 2015

Alan Shirkey, P.E.
Section Administrator
Project Management

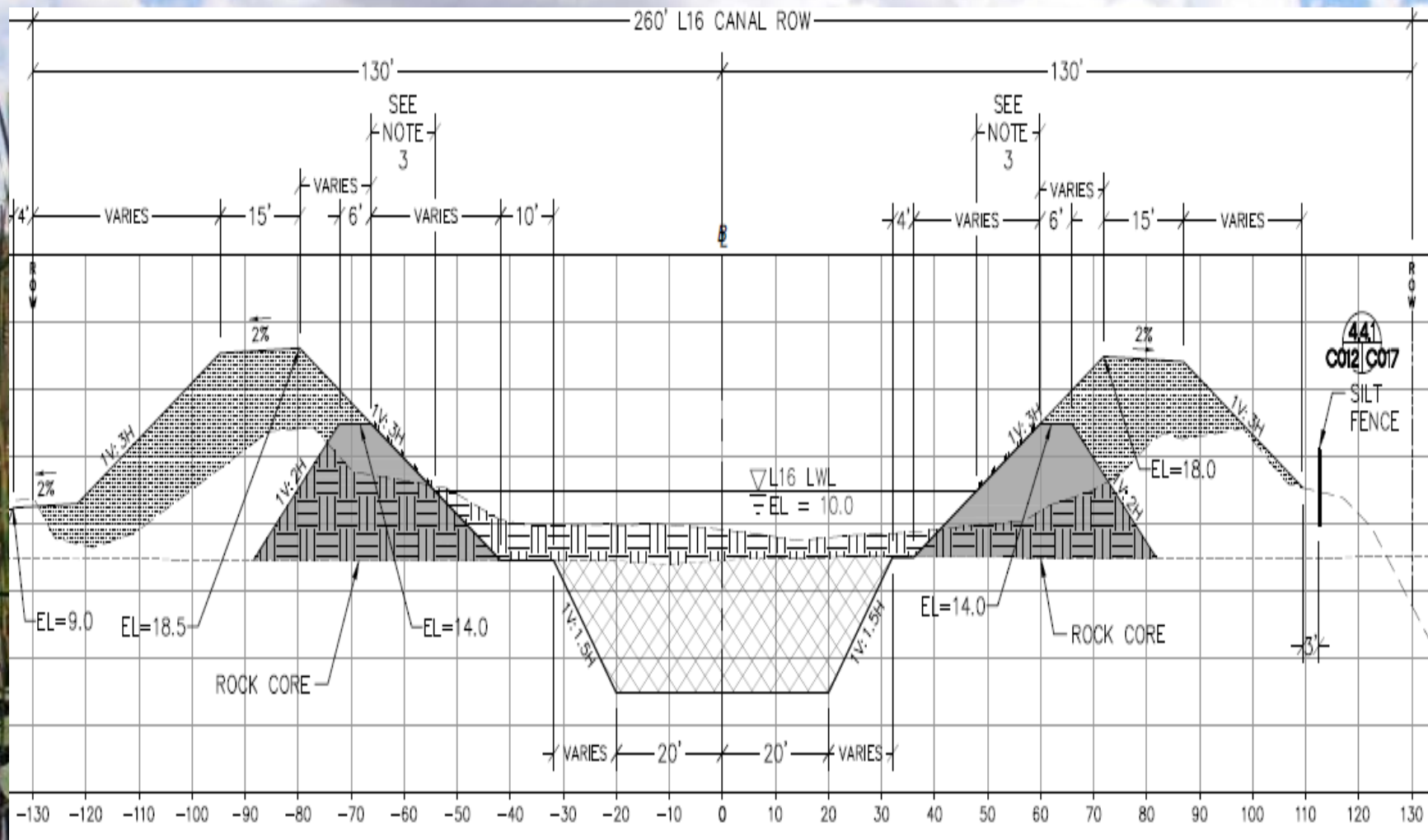
G341 Conveyance Improvements – L16 Canal Phase



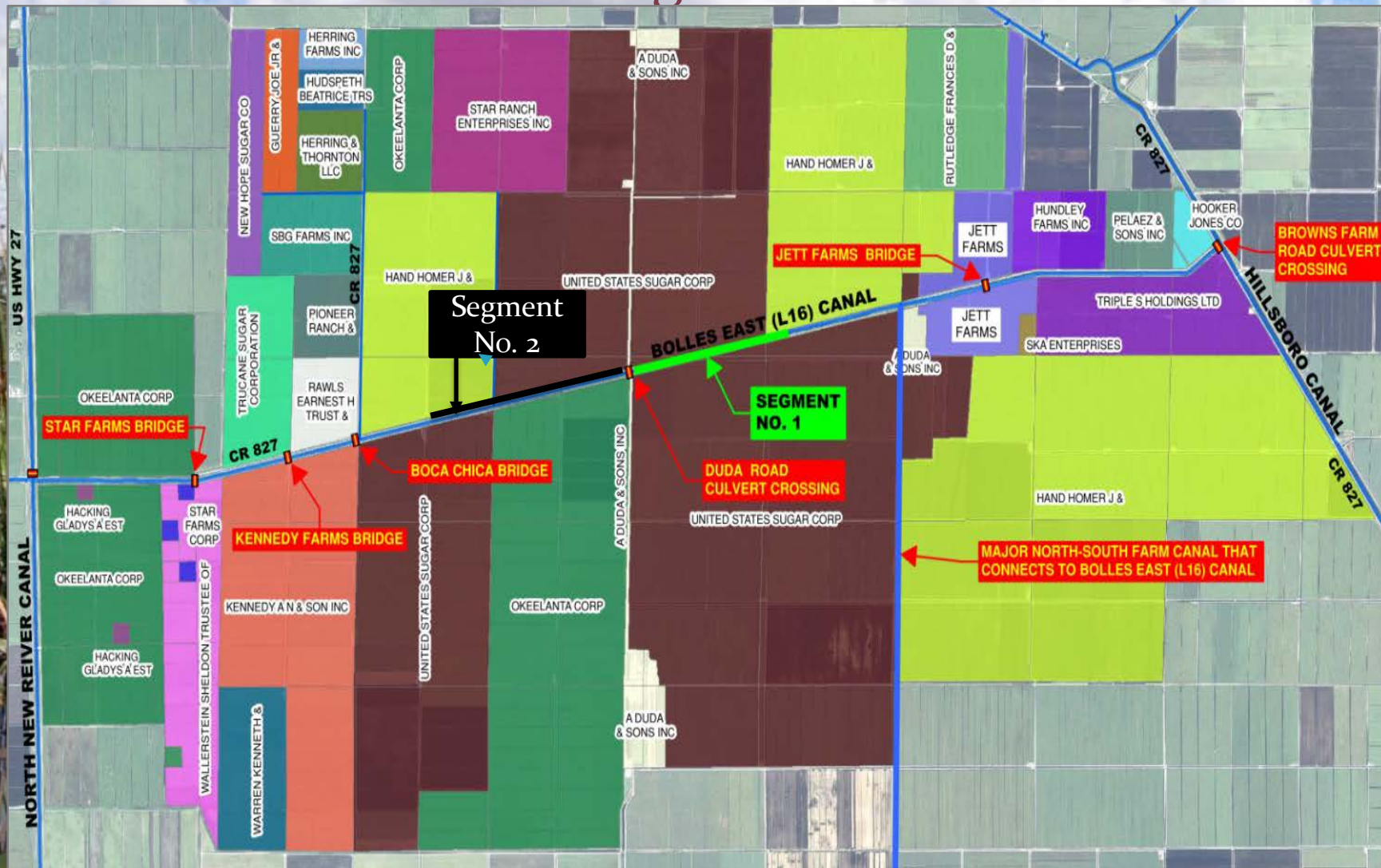
G341 Conveyance Improvements – L16 Canal Segment 1



Typical Cross Section for Segment 1



G341 Conveyance Improvements – L16 Canal Segment 2



G-341 Conveyance Improvements – L16 Canal

- Design of L16 Canal Improvements Phase:
 - Segment 1 Completed
 - Segment 2 Preliminary Design – Dec. 6, 2015
 - Duda Bridge Agreement – In negotiations – Target February 2016 GB
- Construction Schedule Segment 1:
 - Notice to Proceed: September 14, 2015
 - Project Substantial Completion: September 13, 2016
 - Project Final Completion: November 12, 2016
- Construction activities:
 - Farm Ditch – 50% Completed
 - Farm Road – 50% Completed
 - Main Bolles Canal Blasting and Excavation – Begins Nov 30