

Quarterly Communications Meeting on the Long-Term Plan for Achieving Water Quality Goals for the Everglades Protection Area Tributary Basins
A-1 Flow Equalization Basin (FEB)

February 2015

*Alan Shirkey, P.E.
Section Administrator
Project Management*

A-1 FEB – Location and Existing Conditions





**EAA A1 Flow Equalization Basin
Southeast viewing Northwest**



G-724 Outflow Structure



G-723 Seepage Intake Structure



G-722 Outflow Culvert

A-1 FEB

- Design and Construction Schedule:
 - Preliminary Design – Completed
 - Intermediate Design Submittal – Completed
 - Final Design Submittal – Completed
 - Final Design TRB – Completed
 - Corrected Final/RTA Design Submittal – Completed
 - Governing Board – Completed
 - NTP – Completed
 - Substantial Completion – April 29, 2015
 - Final Completion – June 29, 2015

Milestones

Milestone	Compliance date	Status
Initiate design	4/1/2012	Complete
Submit state and federal permits	12/1/2012	Complete
Design status report	3/1/2013	Complete
Complete design	8/1/2013	Complete
Initiate construction	6/30/2014	Complete
Construction status report	3/1/2015	Pending
Construction status report	3/1/2016	Pending
Completion of construction	7/30/2016	Pending
Initial flooding and optimization complete	7/29/2018	Pending

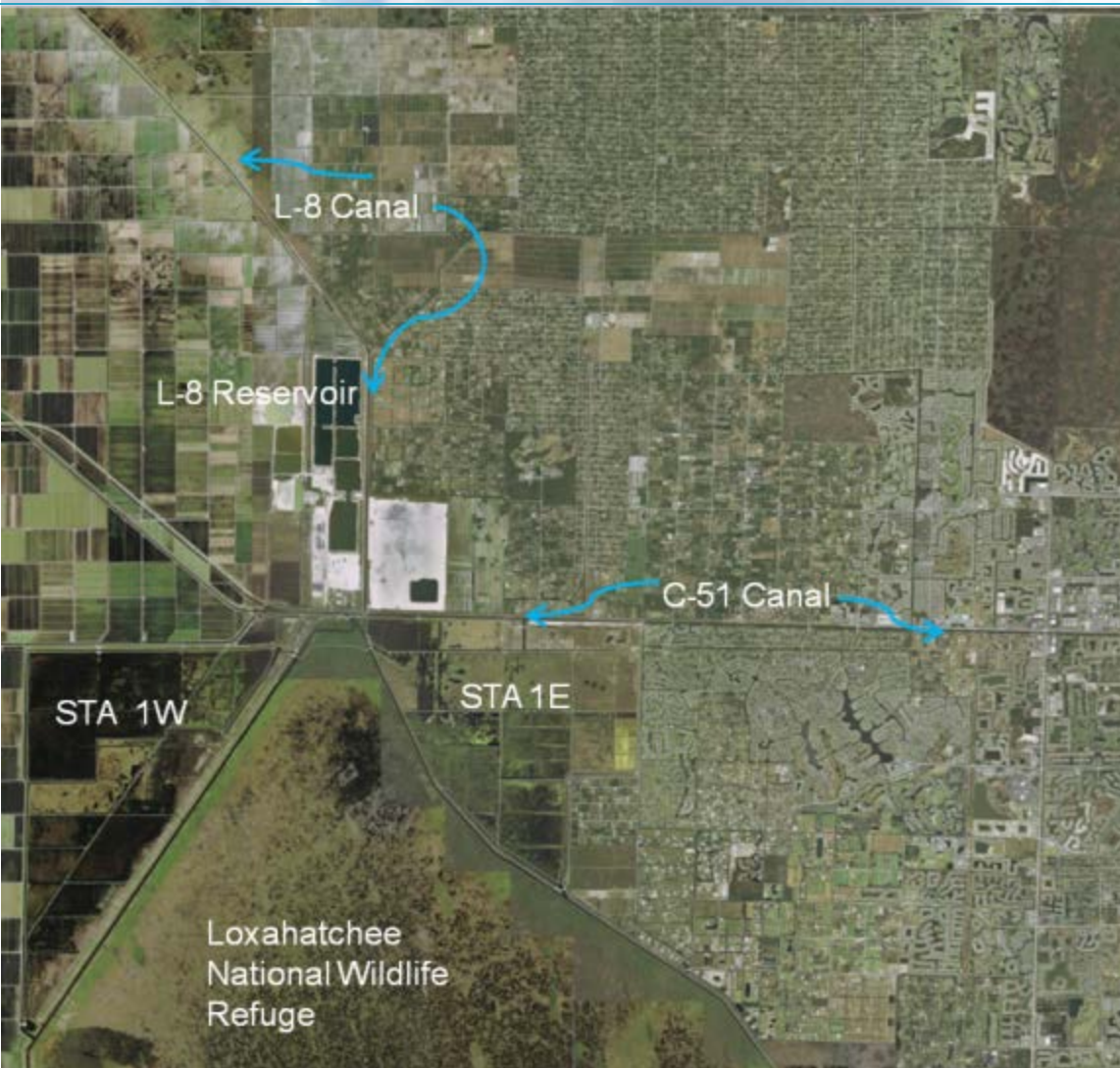
Quarterly Communications Meeting on the Long-Term Plan for Achieving Water Quality Goals for the Everglades Protection Area Tributary Basins

L-8 Flow Equalization Basin

February 2015

*Alan Shirkey, P.E.
Section Administrator
Project Management*

Project Location



Cells 1/2,4,5: -27.0' NAVD
Cell 3: -33.9' NAVD
Cell 6, 7: -27.4' NAVD







Design/Build Schedule

- **Governing Board Approval** Completed
- **NTP** Completed
- **Preliminary Design (Revetment)** Completed
- **Preliminary Design (Pump and Inflow)** Completed
- **Final Design (Revetment)** Completed
- **Final Design (Pump and Inflow)** Completed
- **Revetment Construction – **Roller Compacted Concrete completed, installation of Sod continues****
- **Substantial Completion** April 18, 2015
- **Final Completion** October 15, 2015

Milestones

Milestone	Compliance date	Status
Submit state and federal permits	1/31/2014	Complete
Construction status report	3/1/2014	Complete
Construction status report	3/1/2015	Pending
Completion of construction	12/31/2016	Pending
Long term operations	12/31/2022	Pending

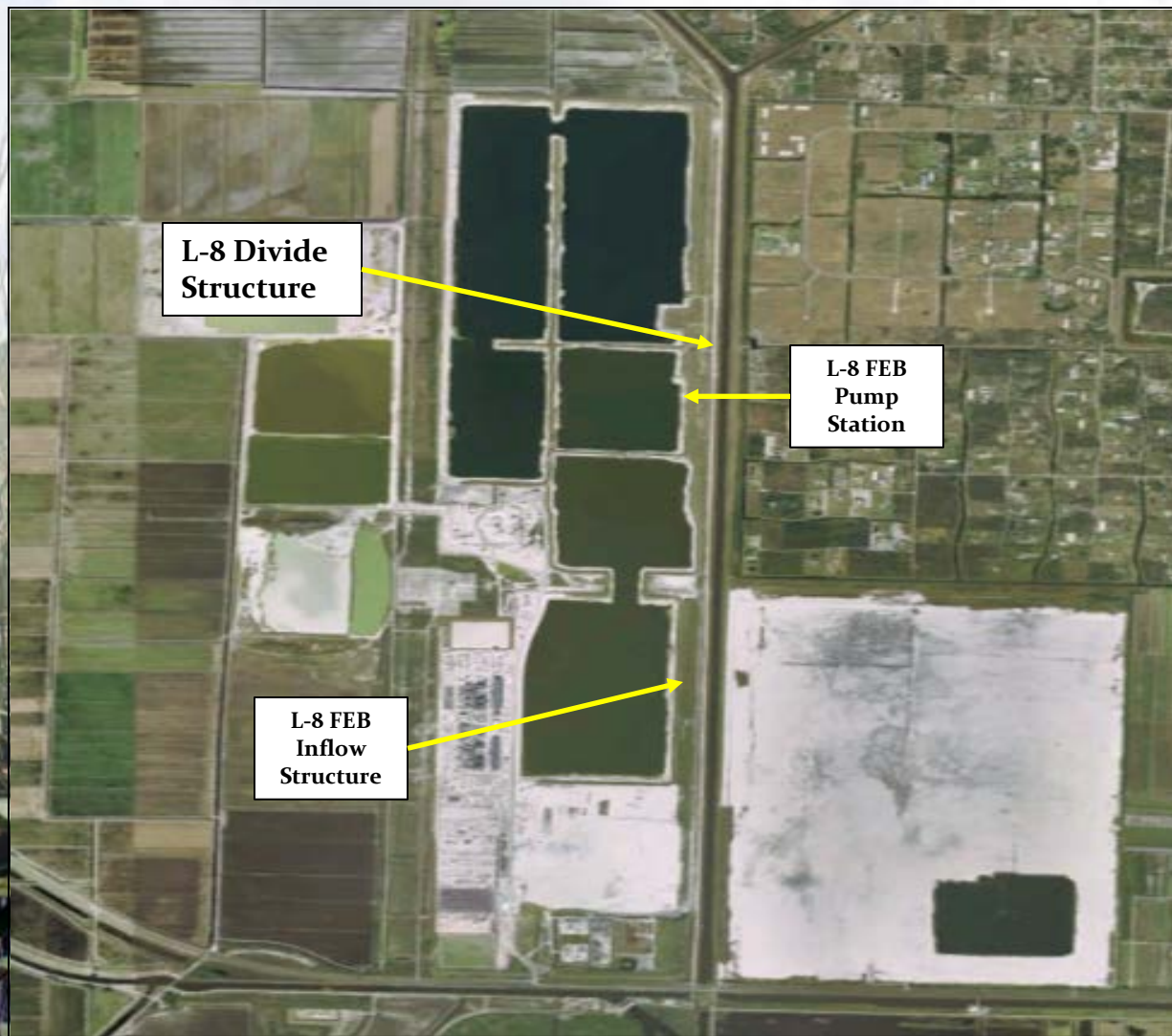
Quarterly Communications Meeting on the Long-Term Plan for Achieving Water Quality Goals for the Everglades Protection Area Tributary Basins

L-8 Divide Structure

February 2015

*Alan Shirkey, P.E.
Section Administrator
Project Management*

L-8 Divide Structure, G-541

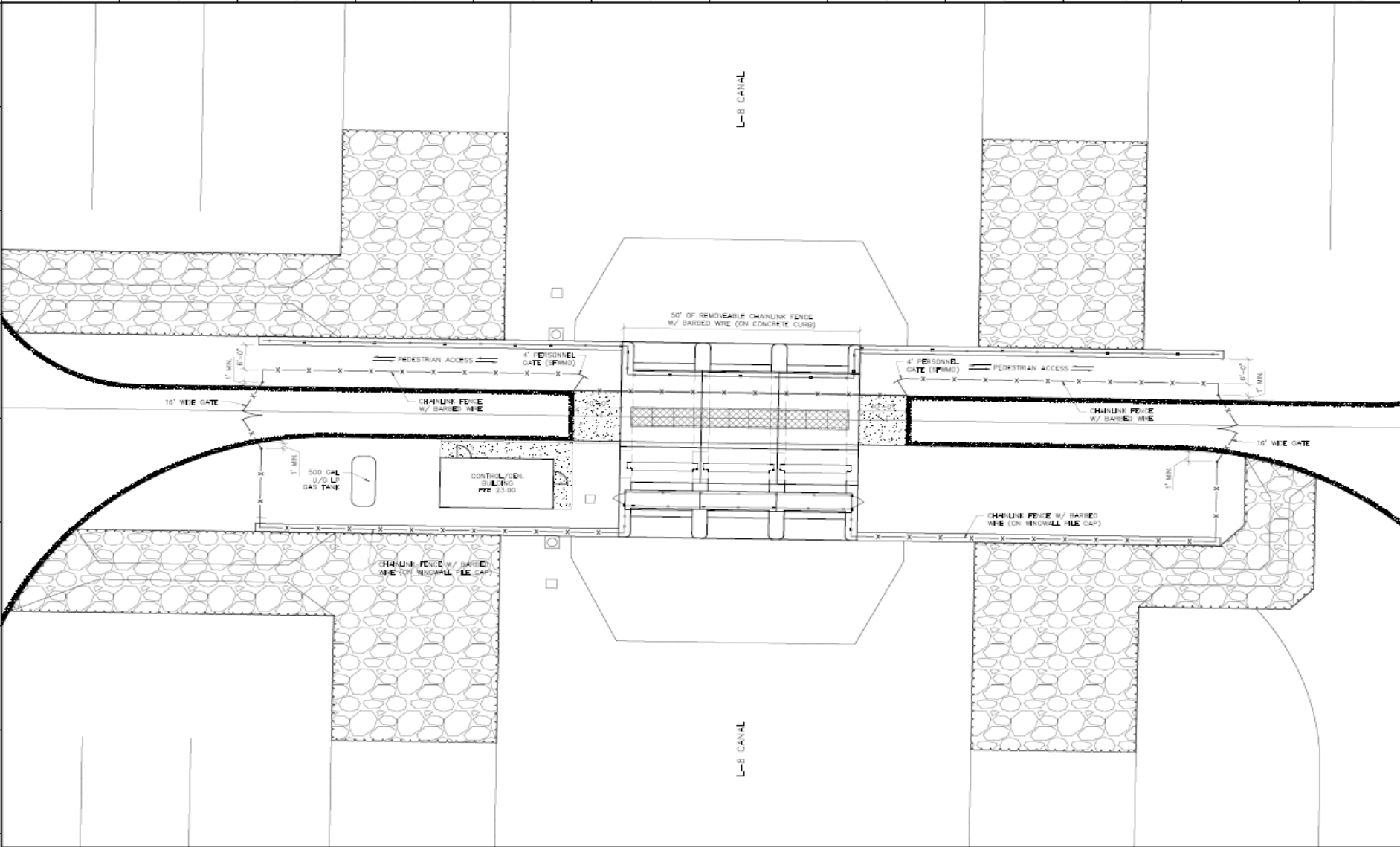


L-8 Divide Structure

L-8 FEB Pump Station

L-8 FEB Inflow Structure

L-8 Divide Structure, G-541





L-8 Divide Structure

- Design: Completed
- Construction Schedule:
 - Notice to Proceed: October 15, 2014
 - Project Substantial Completion: February 7, 2016
 - Project Final Completion: April 7, 2016
- Construction activities:
 - Bypass Channel – Completed
 - Excavation of Subgrade – Completed
 - Pre-drilling of Sheet Piles – Underway

Milestones

Milestone	Compliance date	Status
Initiate design	10/1/2012	Complete
Complete design	9/30/2014	Complete
Initiate construction	10/1/2016	Complete
Complete construction	9/30/2018	Pending

Quarterly Communications Meeting on the Long-Term Plan for Achieving Water Quality Goals for the Everglades Protection Area Tributary Basins

S-5AS Divide Structure

February 2015

*Alan Shirkey, P.E.
Section Administrator
Project Management*

S-5AS Divide Structure



S-5AS Divide Structure



S-5AS Divide Structure



S-5AS Divide Structure

•Design and Construction Schedule:

- Comprehensive Fluid Dynamic Model: Complete
- Structure Stability Review: Complete
- Preliminary design due: Complete
- Final design package due: Complete
- Project out for Bid: Complete
- Governing Board Approval : Complete
- Notice to Proceed : Complete
- Project Substantial Completion : Feb 28, 2016
- Project Final Acceptance: April 28, 2016

S-5AS Divide Structure Milestones

Milestone	Compliance date	Status
Initiate design	10/1/2012	Complete
Complete design	9/30/14	Complete
Initiate construction	10/1/14	Complete
Complete construction	9/30/16	Pending

Quarterly Communications Meeting on the Long-Term Plan for Achieving Water Quality Goals for the Everglades Protection Area Tributary Basins G-716 Structure (S-375 Expansion)

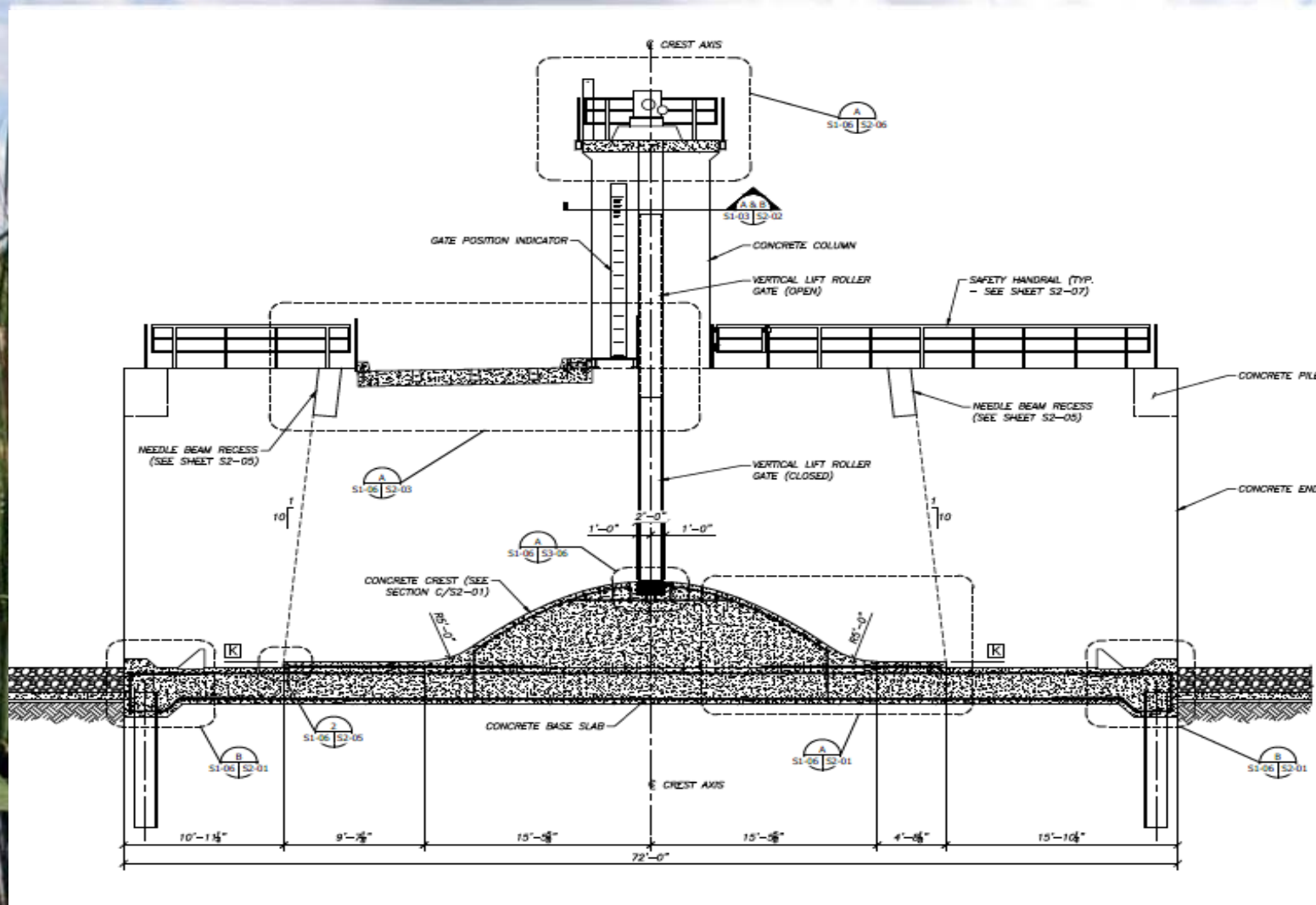
February 2015

*Alan Shirkey, P.E.
Section Administrator
Project Management*

G-716 Structure



G-716 Structure



G-716 Structure

•Design and Construction Schedule:

- Structure Type Evaluation: Complete
- Structure Flow Calculations : Complete
- Preliminary design due: Complete
- Final design package due: June 30, 2015
- Project out for Bid: July 16, 2015
- Governing Board Approval: September 10, 2015
- Notice to Proceed: September 20, 2015
- Project Substantial Completion: April 1, 2017
- Project Final Acceptance: June 1, 2017

G-716 Structure

Milestone	Compliance date	Status
Initiate design	9/30/2013	Complete
Complete design	7/30/2015	Pending
Initiate construction	1/31/2016	Pending
Complete construction	12/31/2018	Pending

Quarterly Communications Meeting on the Long-Term Plan for Achieving Water Quality Goals for the Everglades Protection Area Tributary Basins

STA 1W Expansion # 1

February 2015

*Alan Shirkey, P.E.
Section Administrator
Project Management*

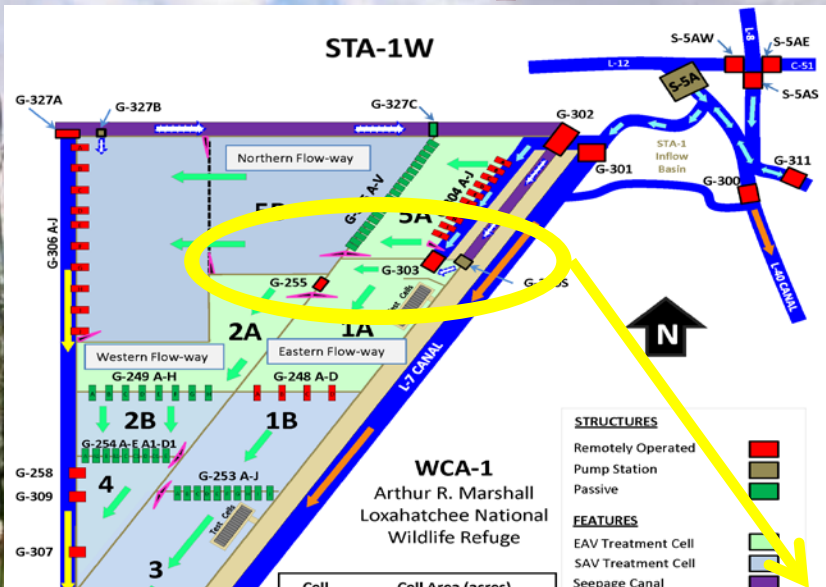
STA 1W Expansion #1

- Design and Construction Schedule:
 - Hydraulic Study – Complete
 - Preliminary Design Plan Set – Complete
 - Preliminary Design Full Submittal – Complete
 - Intermediate Design Submittal – April 17, 2015
 - Final Design Submittal – June 12, 2015
 - Final Design TRB – July 8, 2015
 - Corrected Final/RTA Design Submittal – July 30, 2015
 - Governing Board – October 8, 2015
 - NTP – January 31, 2016
 - Substantial Completion – September 30, 2018
 - Final Completion – December 31, 2018

Milestones

Milestone	Compliance date	Status
Complete land acquisition	9/30/2013	Complete
Initiate design	9/30/2013	Complete
Submit state and federal permits	7/30/2014	Complete
Complete design	7/30/2015	Pending
Initiate construction	1/31/2016	Pending
Construction status report	3/1/2017	Pending
Construction status report	3/1/2018	Pending
Completion of construction	12/31/2018	Pending
Initial flooding and optimization complete	12/30/2020	Pending

Exist. STA Improvements Independent Western Flow way



- Provide the Western Flow-way with an independent inflow source
- Construction of approx. 5,000 linear feet of levees and berms
- Use existing G-255 and G-303 Structures
- Final Design February 2015
- Proposed Project Completion July 2015

