

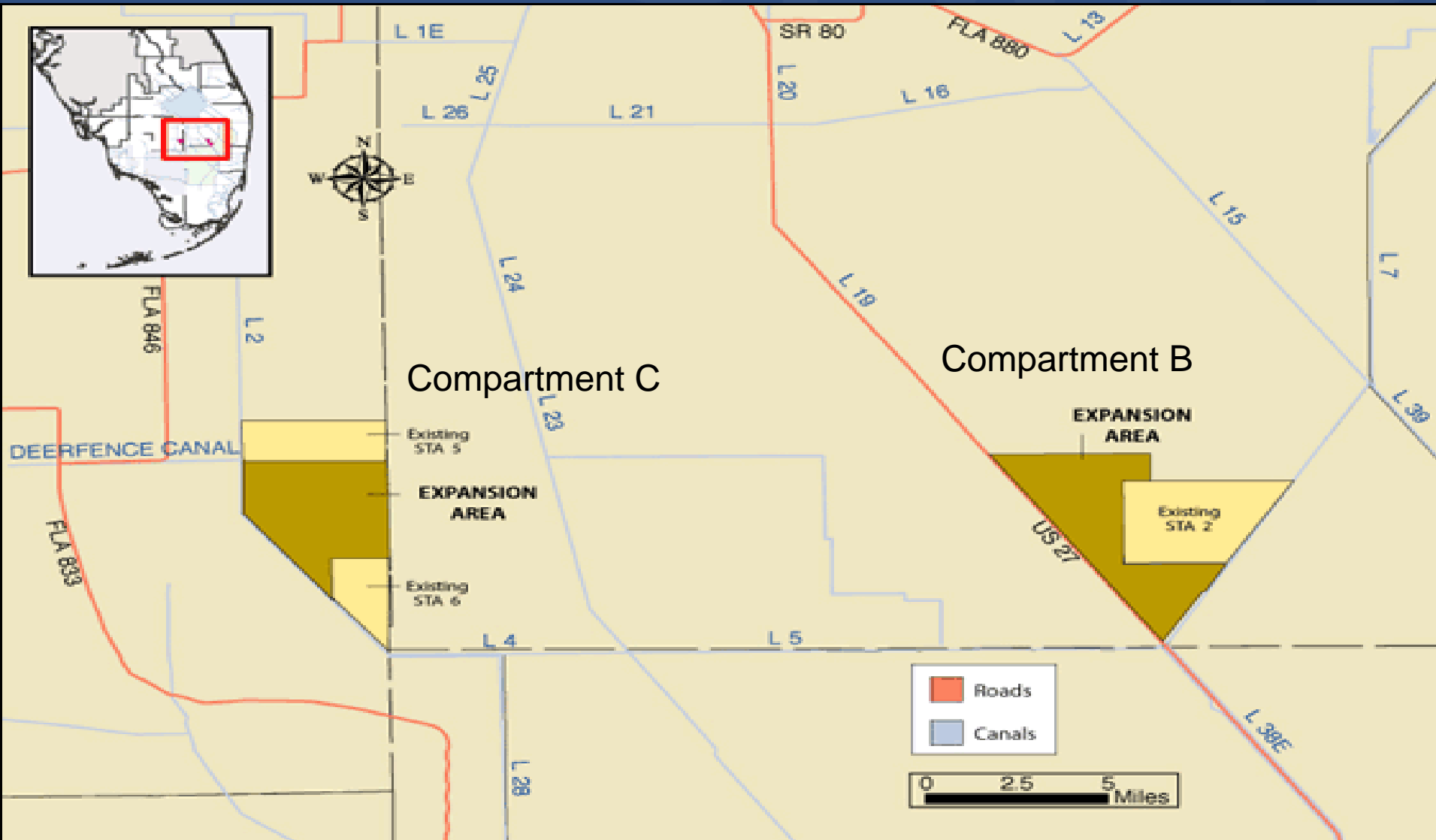


**Quarterly Communications Meeting on the Long-Term Plan for  
Achieving Water Quality Goals for the  
Everglades Protection Area Tributary Basins  
May 23, 2012**

**Compartment B and Compartment C Buildouts  
Stormwater Treatment Areas  
Construction Update**

*Matthew Alexander, P.E., Project Manager  
Engineering and Construction Bureau  
South Florida Water Management District*

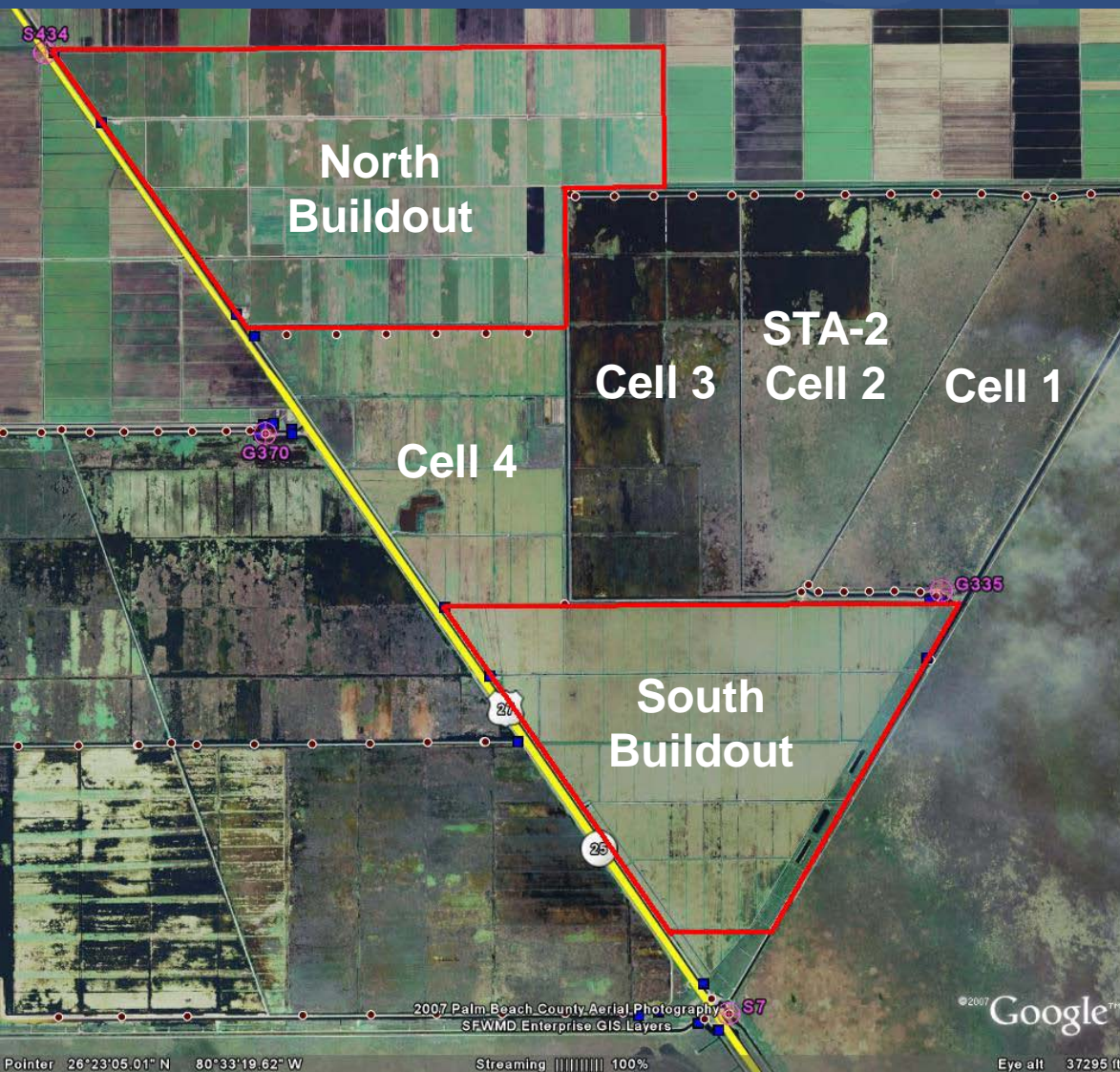
# Location of Compartments B and C



## Basis and Purpose

- Component of the Everglades Construction Project and the Everglades Protection Area Tributary Basins Long-Term Plan for Achieving Water Quality Goals (Long-Term Plan)
- Included in the 10-Year Strategic Plan and the Current Annual Plan
- Assist with Redistribution of Flows and Loads in the Stormwater Treatment Area (STA) System to Achieve Optimal Performance

# Compartment B Buildout



- East of U.S. 27 and STA-3/4
- West of STA-2

# Compartment B Buildout

- Accomplishments to date:
  - Completed Final Design - STA, Pump Stations, G-434 & G-435 Bridges
  - Completed Pump Equipment Procurement Contract
  - Received Construction Permits
  - North and South Buildout STAs
    - Notice to Proceed (NTP) June 1, 2009 for North and South Buildouts
    - Achieved Flow Capable Milestone for the North & South Buildout STAs - December 2010
    - Achieved Final Completion on North Buildout STA on Oct 22, 2011 and South Buildout Nov 8, 2011
  - Continued Construction – G-434 and G-436 Pump Stations
    - Issued NTP September 14 & 17, 2009
    - Completed Superstructure at G-435, G-434 & G-436 Pump Stations
    - Installed Pumping Equipment
  - Completed Construction – Bridges at G-434 & G-435, & G-435 Pump Station
  - Completed Construction - G-435 Pump Station on January 24, 2012

# Compartment B Buildout

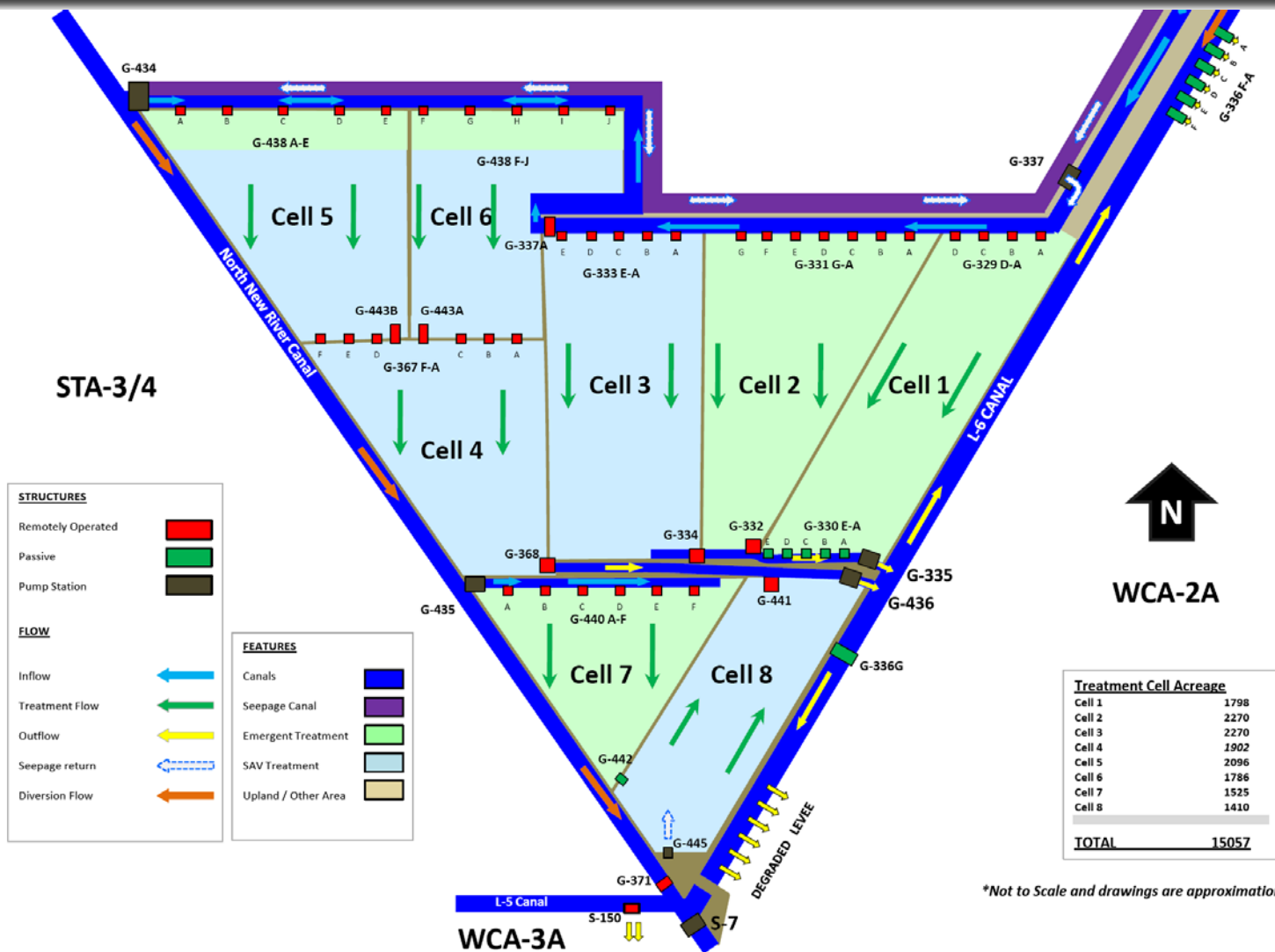
## ■ What's next:

- Continue Construction of G-434 and G-436 Pump Stations
  - Operational Readiness Testing of pumping equipment
  - Commissioning

## ■ Construction Completion Schedule

- G-434 and G-436 Pump Stations      June 29, 2012

# Compartment B Buildout



\*Not to Scale and drawings are approximations

# G-434 Pump Station - February 2012





# G-434 Pump Station



# G-434 Pump Station



# G-435 Pump Station - December 2011



# G-435 Pump Station – April 2012



# G-435 Pump Station



# G-436 Pump Station - February 2012



# G-436 Pump Station



# G-436, 533 cfs pump

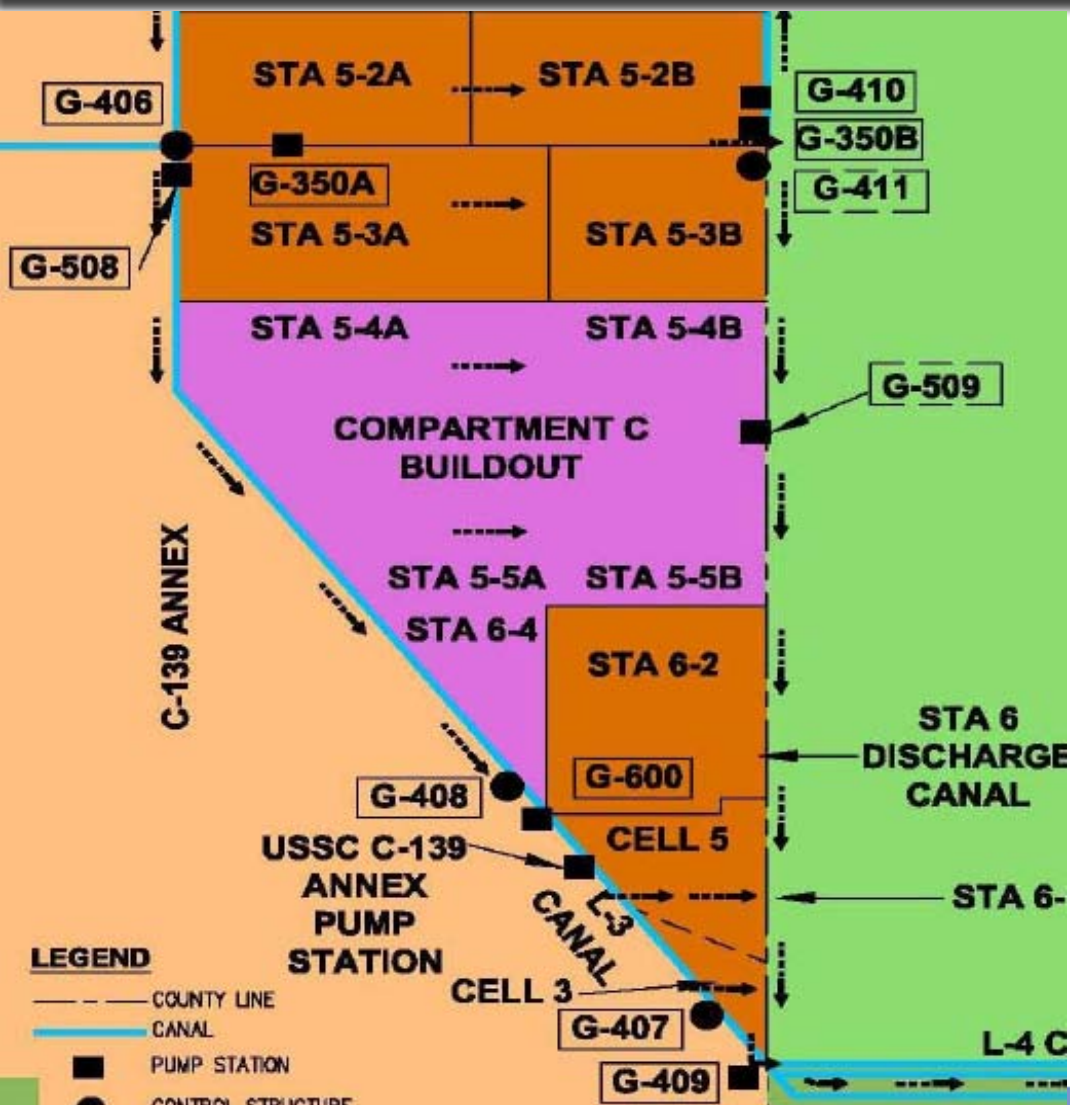




# G-436 Pump Station

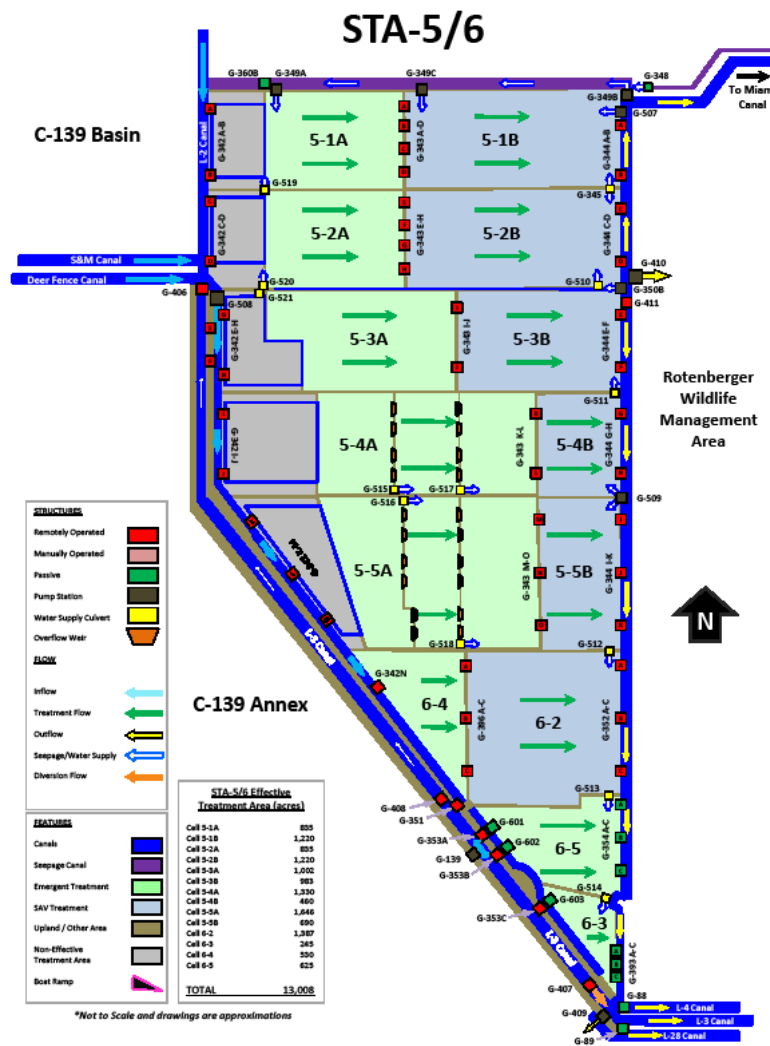


# Compartment C Buildout



- East of Feeder Canal, L-28 and C-139 Basins
- West of Rotenberger Wildlife Management Area

# Compartment C Buildout



# Compartment C Buildout

- Accomplishments to date:
  - Completed Final Design-STA and Pump Station
  - Completed Pump Equipment Procurement Contract
  - Received Construction Permits
  
- Completed Construction of STA
  - Issued NTP April 6, 2009
  - Achieved Flow Capable Milestone December 2010
  - Achieved Final Completion on September 18, 2011
  
- Continued Construction of G-508 Pump Station
  - Issued NTP September 1, 2009
  - Installed Diesel and Electric Pumps
  - Completed Superstructure

# Compartment C Buildout

- What's Next:
  - Continue Construction of G-508 Pump Station
    - Operational Readiness Testing of pumping equipment
    - Commissioning
  
- Construction Completion Schedule
  - G-508 Pump Station June 29, 2012

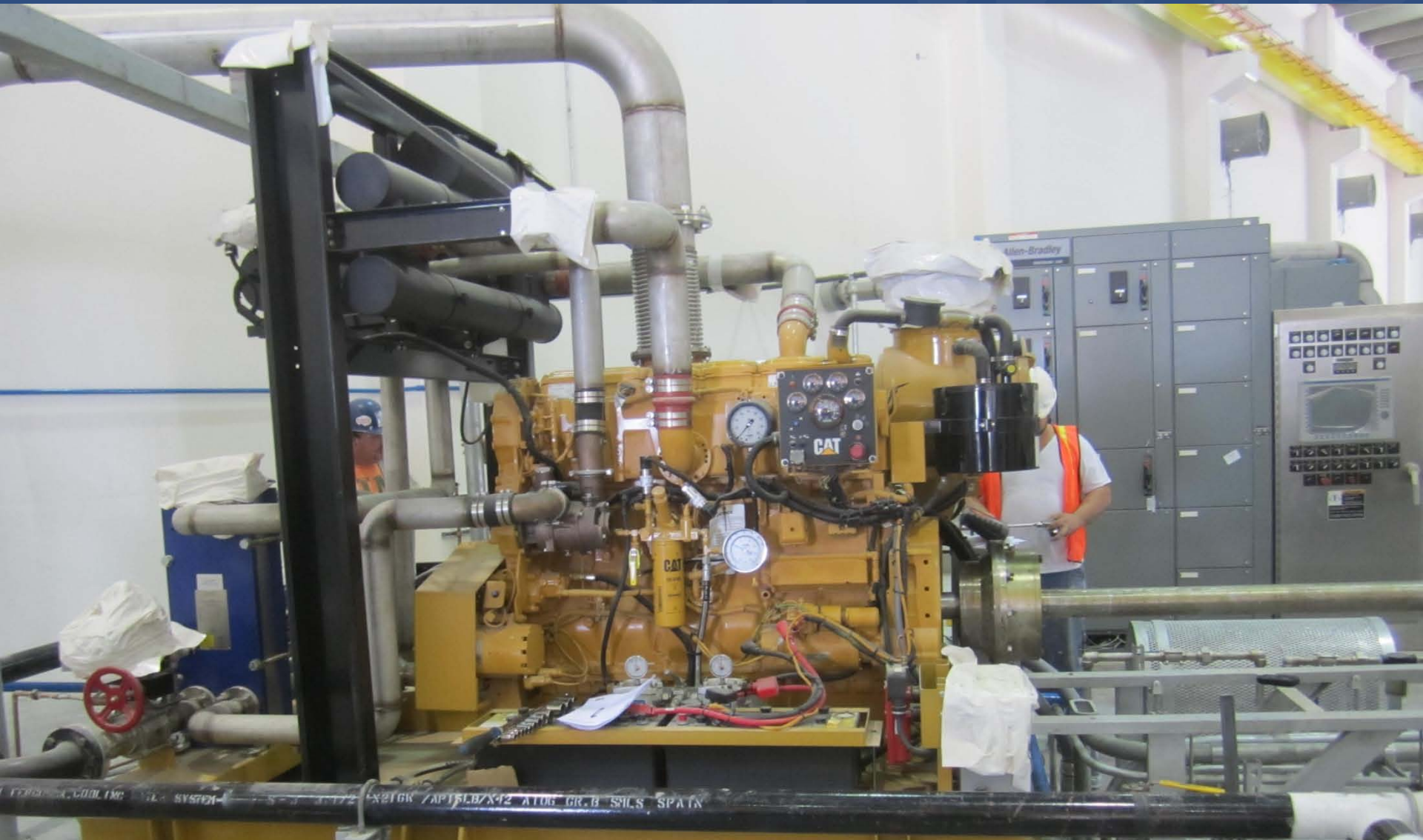
# G-508 Pump Station – May 2012



# G-508 – March 2012



# G-508





# G-508



# Questions?

