

L-8 Flow Equalization Basin

Long-Term Plan
Communications Meeting
August 23, 2013

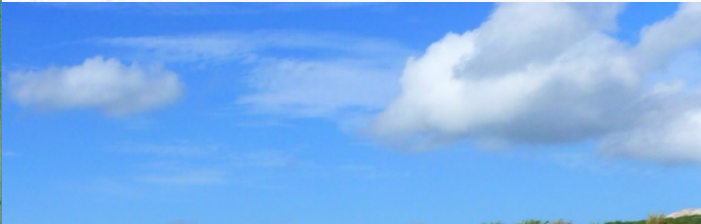
John Mitnik, PE
Bureau Chief
Engineering & Construction Bureau

Project Location





Cells 1,2,4,5: -18.65' NAVD
Cell 3: -33.90' NAVD
Cell 6,7: -20.65 NAVD



Soil Cement Revetment



TOB 23' NAVD
Ties into
existing
rock shelf
~ 3-5' NAVD

Design/Build Schedule

- **Governing Board Approval** Completed
- **NTP** Completed
- **Preliminary Design (Revetment)** Completed
- **Preliminary Design (Pump and Inflow)** Completed
- **Final Design (Revetment)** Completed
- **Final Design (Pump and Inflow)** Completed
- **Revetment Construction **Test Section (300 feet)**
Commenced**
- **Substantial Completion** April 18, 2015
- **Final Completion** October 15, 2015

Milestones

Milestone	Compliance date	Status
Submit state and federal permits	1/31/2014	Complete
Construction status report	3/1/2014	Pending
Construction status report	3/1/2015	Pending
Completion of construction	12/31/2016	Pending
Long term operations	12/31/2022	Pending

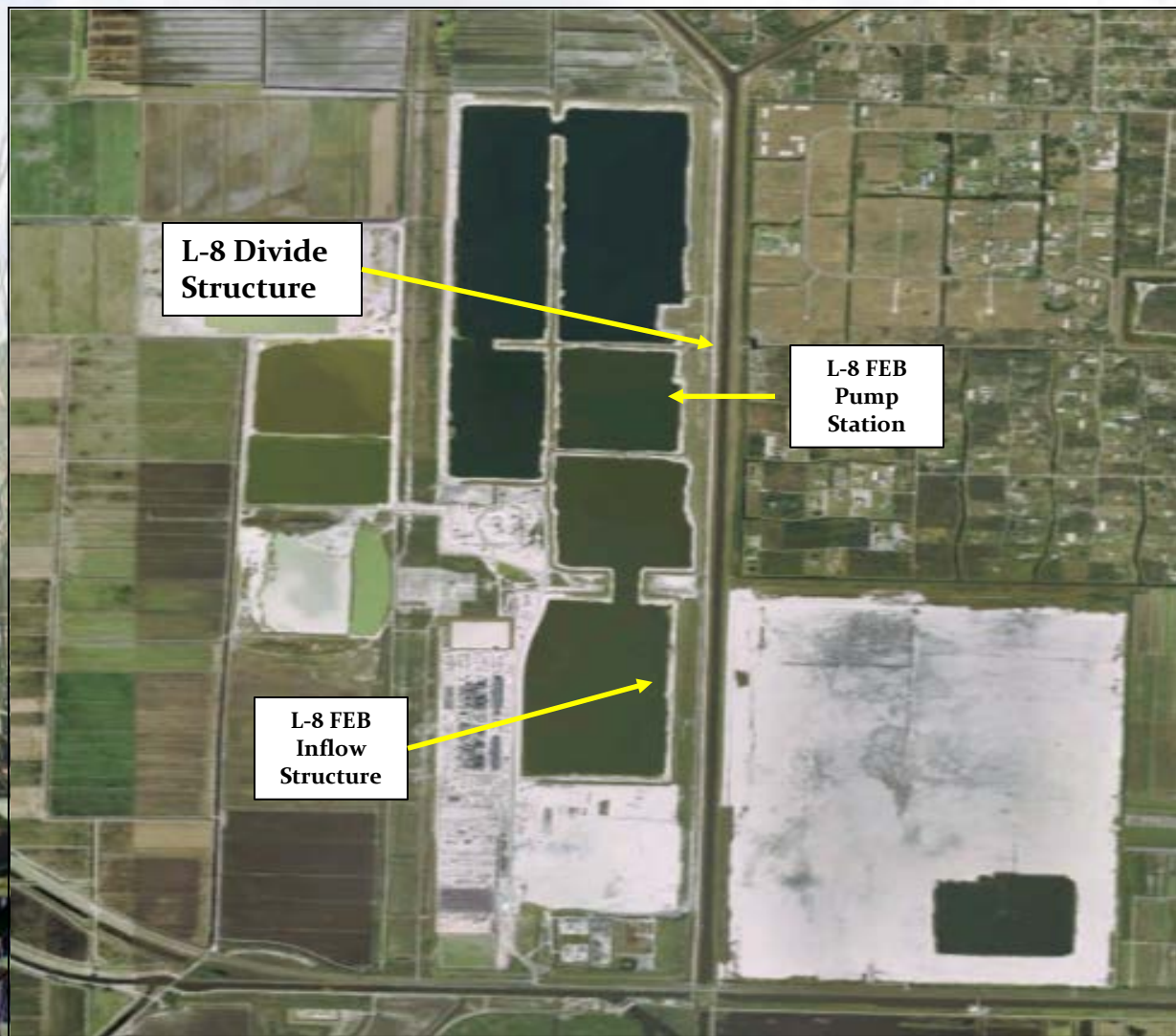
Quarterly Communications Meeting on the Long-Term Plan for Achieving Water Quality Goals for the Everglades Protection Area Tributary Basins

L-8 Divide Structure

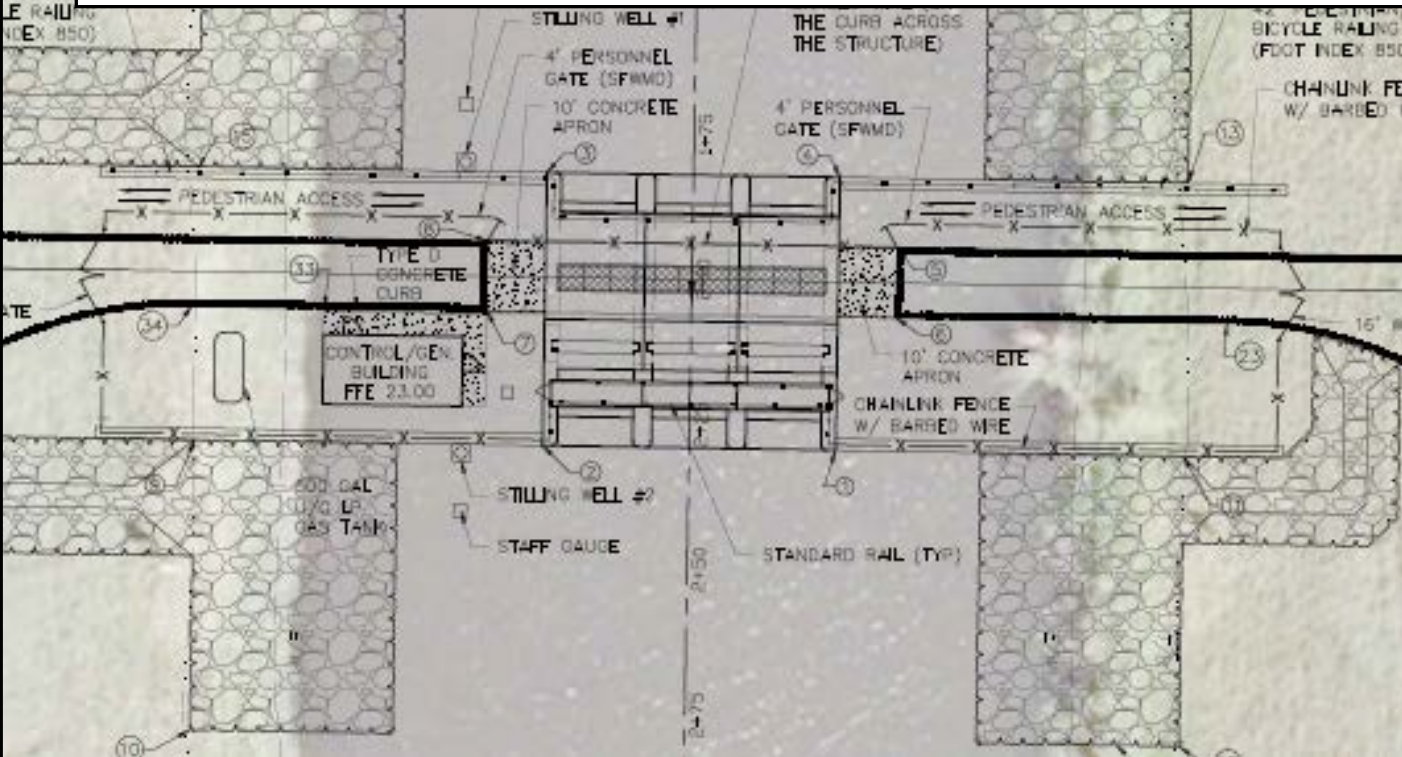
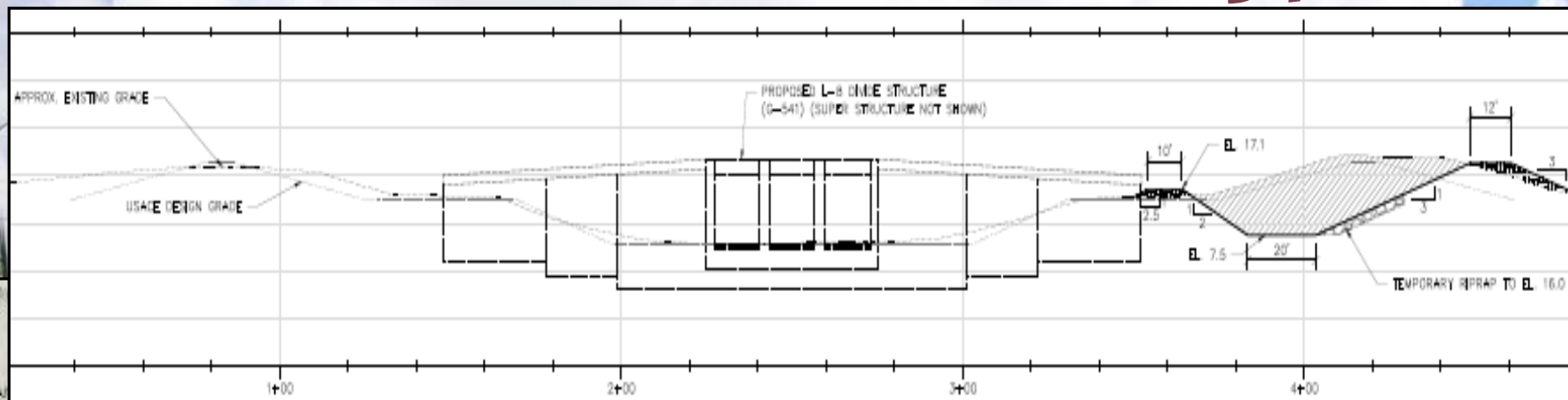
August 23, 2013

*John Mitnik, P.E.
Bureau Chief
Engineering and Construction Bureau*

L-8 Divide Structure, G-541



L-8 Divide Structure, G-541



L-8 Divide Structure

•Design and Construction Schedule:

- Hydrographic & topographic survey for the 26 miles of L-8 from C-10A to S-5AS: Completed
- Hydrologic & Hydraulic modeling efforts for structure design: Completed
- Geotechnical survey for structure subsurface and seepage analysis: Completed
- Preliminary design due : Completed (under review)
- Final design package due: February 2014
- Notice to Proceed: August 2014
- Project Substantial Completion: January 2016
- Project Final Acceptance: March 2016

Milestones

Milestone	Compliance date	Status
Initiate design	10/1/2012	Complete
Complete design	9/30/2014	Pending
Initiate construction	10/1/2016	Pending
Complete construction	9/30/2018	Pending

Quarterly Communications Meeting on the Long-Term Plan for Achieving Water Quality Goals for the Everglades Protection Area Tributary Basins

S-5AS Divide Structure

August 23, 2013

*John Mitnik, P.E.
Bureau Chief
Engineering and Construction Bureau*

S-5AS Divide Structure



S-5AS Divide Structure



S-5AS Divide Structure

•Design and Construction Schedule:

- Comprehensive Fluid Dynamic Model: Complete
- Structure Stability Review: Complete
- Preliminary design due: February 28, 2014
- Final design package due: May 30, 2014
- Project out for Bid: July 1, 2014
- Governing Board Approval : August 15, 2014
- Notice to Proceed : September 1, 2014
- Project Substantial Completion : December 15, 2015
- Project Final Acceptance: January 15, 2016

S-5AS Divide Structure Milestones

Milestone	Compliance date	Status
Initiate design	10/1/2012	Complete
Complete design	9/30/2014	Pending
Initiate construction	10/1/2014	Pending
Complete construction	9/30/2016	Pending

Quarterly Communications Meeting on the Long-Term Plan for Achieving Water Quality Goals for the Everglades Protection Area Tributary Basins

G-716 Structure

August 23, 2013

*John Mitnik, P.E.
Bureau Chief
Engineering and Construction Bureau*

G-716 Structure



G-716 Structure



G-716 Structure

•Design and Construction Schedule:

- Structure Type Evaluation: Complete
- Structure Flow Calculations : Complete
- Preliminary design due: September 5, 2014
- Final design package due: February 20, 2015
- Project out for Bid: April 5, 2015
- Governing Board Approval: May 10, 2015
- Notice to Proceed: May 15, 2015
- Project Substantial Completion: November 30, 2016
- Project Final Acceptance: December 31, 2016

G-716 Structure

Milestone	Compliance date	Status
Initiate design	9/30/2013	Complete
Complete design	7/30/2015	Pending
Initiate construction	1/31/2016	Pending
Complete construction	12/31/2018	Pending

Questions?

