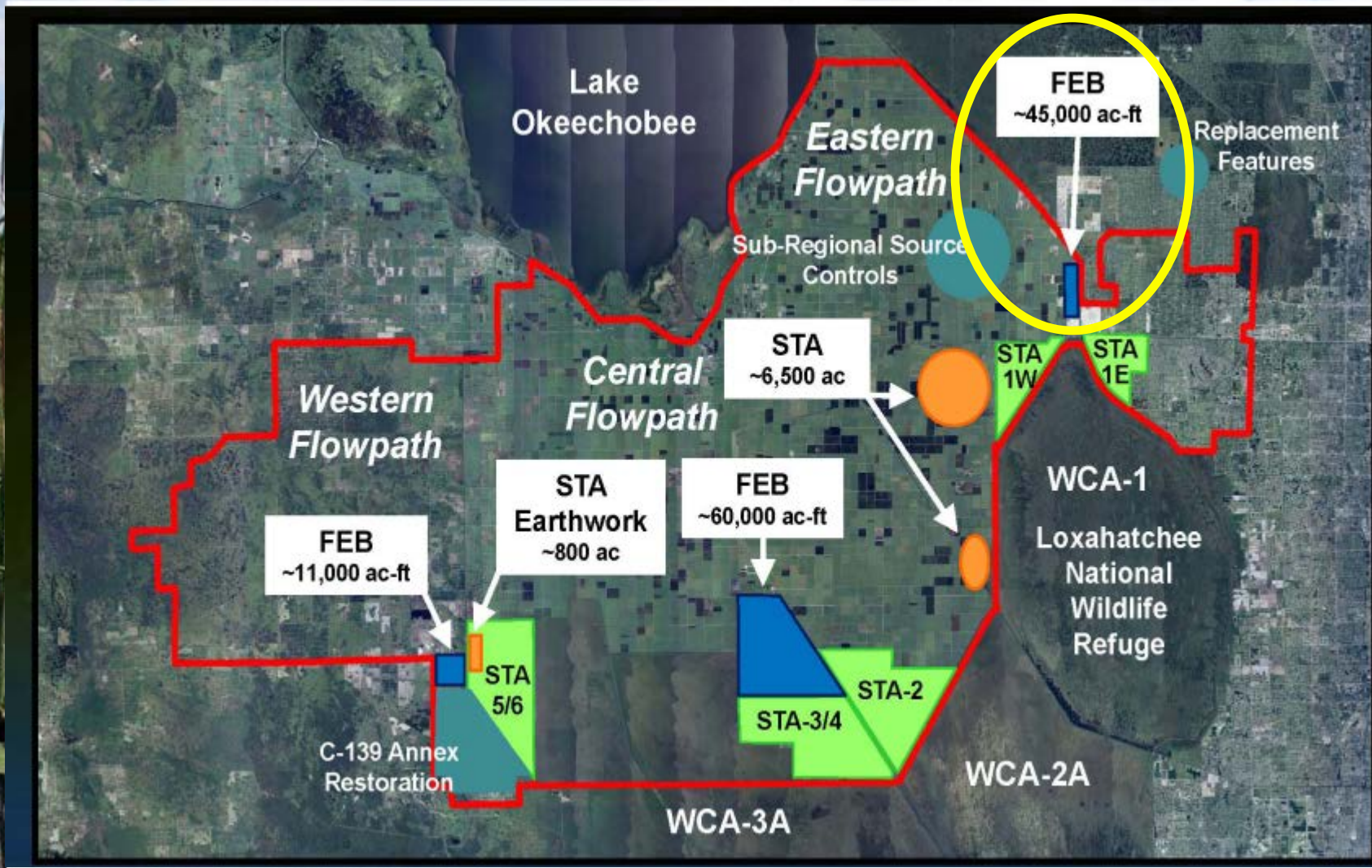


# L-8 Flow Equalization Basin

Long-Term Plan  
Communications Meeting  
May 22, 2013

John Mitnik, PE  
Bureau Chief  
Engineering & Construction Bureau

# Restoration Strategies Key Projects



# Project Location



# Design and Dewater



Water at -13.75' NGVD



# Soil Cement Revetment



TOB 23' NAVD  
Ties into  
existing  
rock shelf  
~ 3-5' NAVD

# Design/Build Schedule

- **Governing Board Approval- Completed**
- **NTP - Completed**
- **Preliminary Design (Revetment) - Completed**
- **Preliminary Design (Pump Station and Inflow) - Completed**
- **Final Design (Revetment) - Completed**
- **Final Design (Pump Station and Inflow) - May 30, 2013**
- **Revetment Construction Starts - June 13, 2013**
- **Substantial Completion - April 18, 2015**
- **Final Completion - October 15, 2015**

# Milestones

Milestone	Compliance date	Status
Submit state and federal permits	1/31/2014	Complete
Construction status report	3/1/2014	Pending
Construction status report	3/1/2015	Pending
Completion of construction	12/31/2016	Pending
Long term operations	12/31/2022	Pending



# Quarterly Communications Meeting on the Long-Term Plan for Achieving Water Quality Goals for the Everglades Protection Area Tributary Basins

## A-1 Flow Equalization Basin (FEB)

May 22, 2013

*John Mitnik, P.E.  
Bureau Chief  
Engineering and Construction Bureau*

# A-1 FEB – Location and Existing Conditions



## A-1 FEB

- Design and Construction Schedule:
  - Preliminary Design – **Completed**
  - Intermediate Design Submittal – **Completed**
  - Final Design Submittal – **Completed**
  - Final Design TRB – June 6, 2013
  - Corrected Final/RTA Design Submittal – July 22, 2013
  - Governing Board – October 2013
  - NTP – November 1, 2013
  - Substantial Completion – December 31, 2014
  - Final Completion – March 31, 2015

# Milestones

Milestone	Compliance date	Status
Initiate design	4/1/2012	Complete
Submit state and federal permits	12/1/2012	Complete
Design status report	3/1/2013	Complete
Complete design	8/1/2013	Pending
Initiate construction	6/30/2014	Pending
Construction status report	3/1/2015	Pending
Construction status report	3/1/2016	Pending
Completion of construction	7/30/2016	Pending
Initial flooding and optimization complete	7/29/2018	Pending

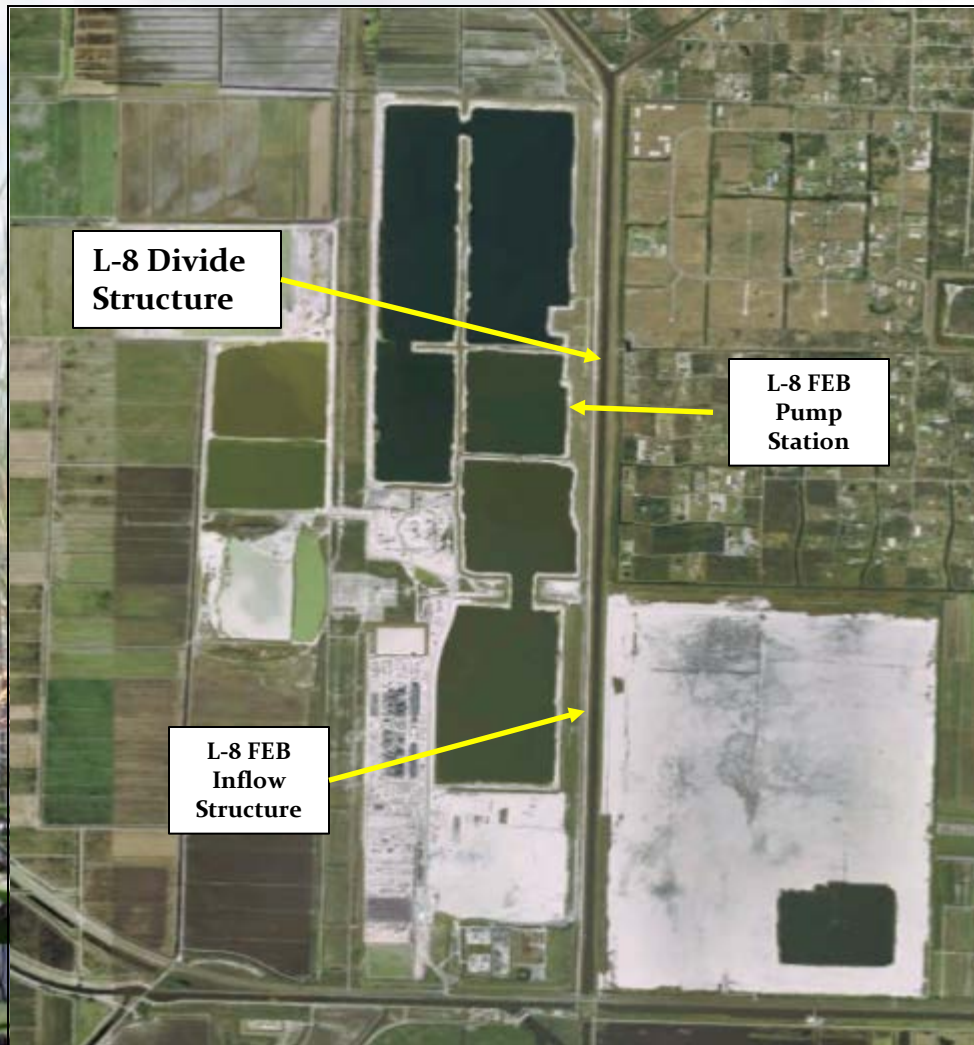
# Quarterly Communications Meeting on the Long-Term Plan for Achieving Water Quality Goals for the Everglades Protection Area Tributary Basins

## L-8 Divide Structure

May 22, 2013

*John Mitnik, P.E.  
Bureau Chief  
Engineering and Construction Bureau*

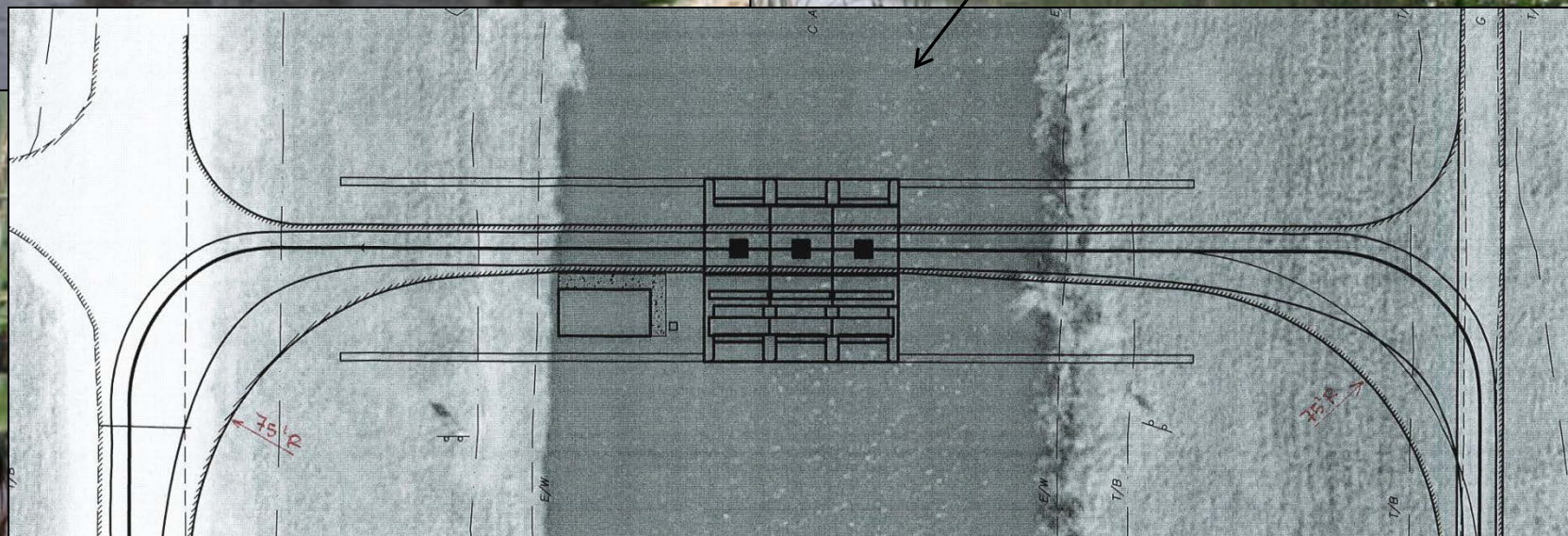
# L-8 Divide Structure, G-541



# L-8 Divide Structure, G-541

Typical SFWMD Vertical  
Lift, Gated Spillway  
Structure

G-541 Conceptual  
Drawing



# L-8 Divide Structure

- Design and Construction Schedule:

- Hydrographic & topographic survey for the 26 miles of L-8 from C-10A to S-5AS: Completed
- Hydrologic & Hydraulic modeling efforts for structure design: Completed
- Geotechnical survey for structure subsurface and seepage analysis: Completed

- Preliminary design due : July 2013
- Final design package due: February 2014
- Notice to Proceed: August 2014
- Project Substantial Completion: January 2016
- Project Final Acceptance: March 2016



# Milestones

Milestone	Compliance date	Status
Initiate design	10/1/2012	Complete
Complete design	9/30/2014	Pending
Initiate construction	10/1/2016	Pending
Complete construction	9/30/2018	Pending

# Quarterly Communications Meeting on the Long-Term Plan for Achieving Water Quality Goals for the Everglades Protection Area Tributary Basins

## S-5AS Divide Structure

May 22, 2013

*John Mitnik, P.E.  
Bureau Chief  
Engineering and Construction Bureau*

# S-5AS Divide Structure



# S-5AS Divide Structure



# S-5AS Divide Structure

- **Design and Construction Schedule:**
  - **Comprehensive Fluid Dynamic Model underway**
  - **Structure Stability Review complete**
  - **Preliminary design due - July 2013**
  - **Intermediate Design Submittal Deadline – September 2013**
  - **Final design package due - December 2013**
  - **Project out for Bid – February 2014**
  - **Governing Board Approval – March 2014**
  - **Notice to Proceed – April 2014**
  - **Project Substantial Completion – June 2015**
  - **Project Final Acceptance – July 2015**

# S-5AS Divide Structure Milestones

<b>Milestone</b>	<b>Compliance date</b>	<b>Status</b>
Initiate design	10/1/2012	Complete
Complete design	9/30/2014	Pending
Initiate construction	10/1/2014	Pending
Complete construction	9/30/2016	Pending

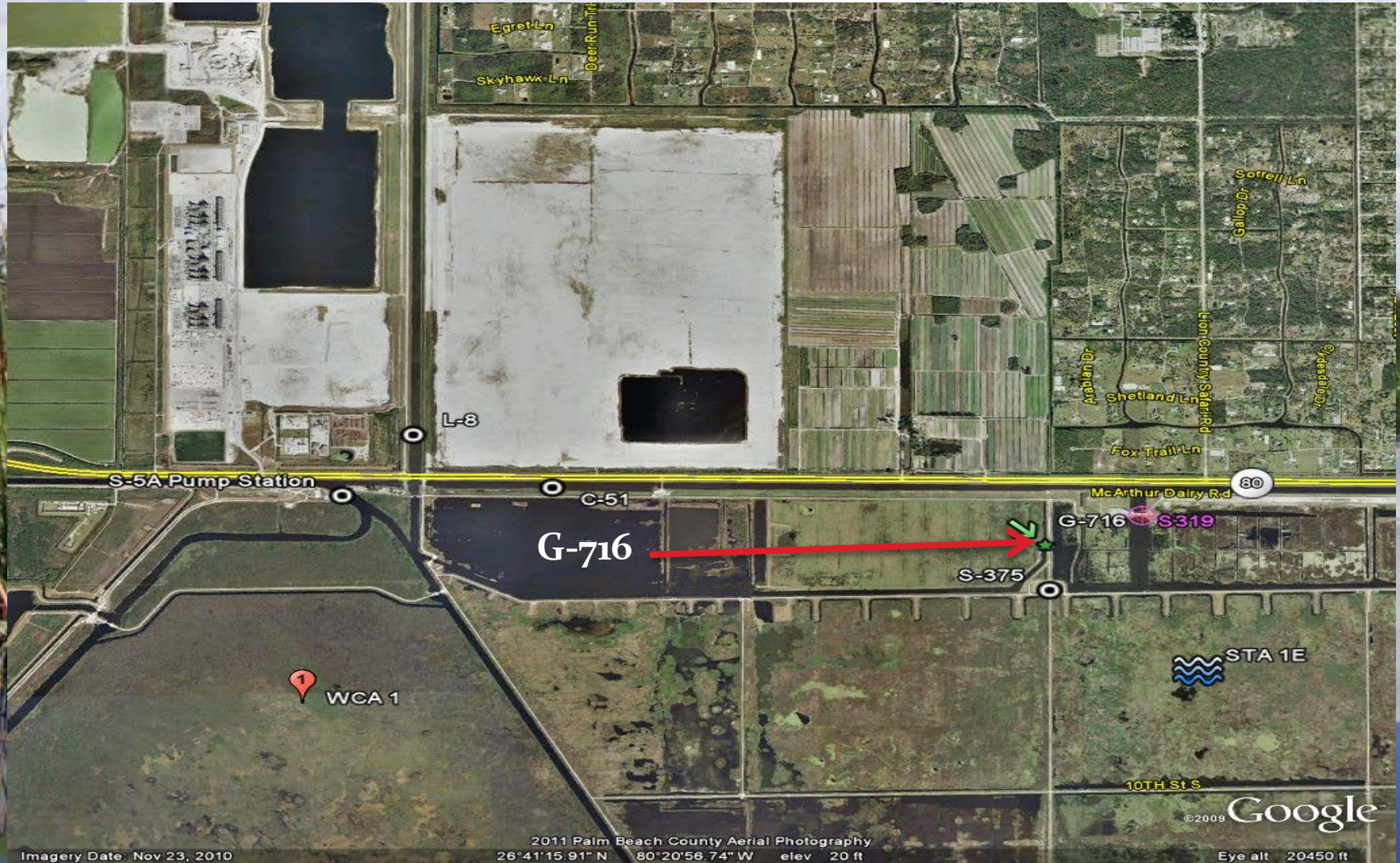
# Quarterly Communications Meeting on the Long-Term Plan for Achieving Water Quality Goals for the Everglades Protection Area Tributary Basins

## G-716 Structure

May 22, 2013

*John Mitnik, P.E.  
Bureau Chief  
Engineering and Construction Bureau*

# G-716 Structure





# G-716 Structure



# G-716 Structure

- **Design and Construction Schedule:**
  - **Structure Type Evaluation - complete**
  - **Structure Flow Calculations - complete**
  - **Preliminary design due - August 2013**
  - **Final design package due – August 2014**
  - **Project out for Bid – September 2014**
  - **Governing Board Approval – November 2014**
  - **Notice to Proceed – December 2014**
  - **Project Substantial Completion – May 2016**
  - **Project Final Acceptance – June 2016**

# Questions?

