

Quarterly Communications Meeting for Long-Term Plan
for Achieving Water Quality Goals for the Everglades
Protection Area Tributary Basins
August 22, 2012

Vegetation Management Update

Start Up of Compartments B and C

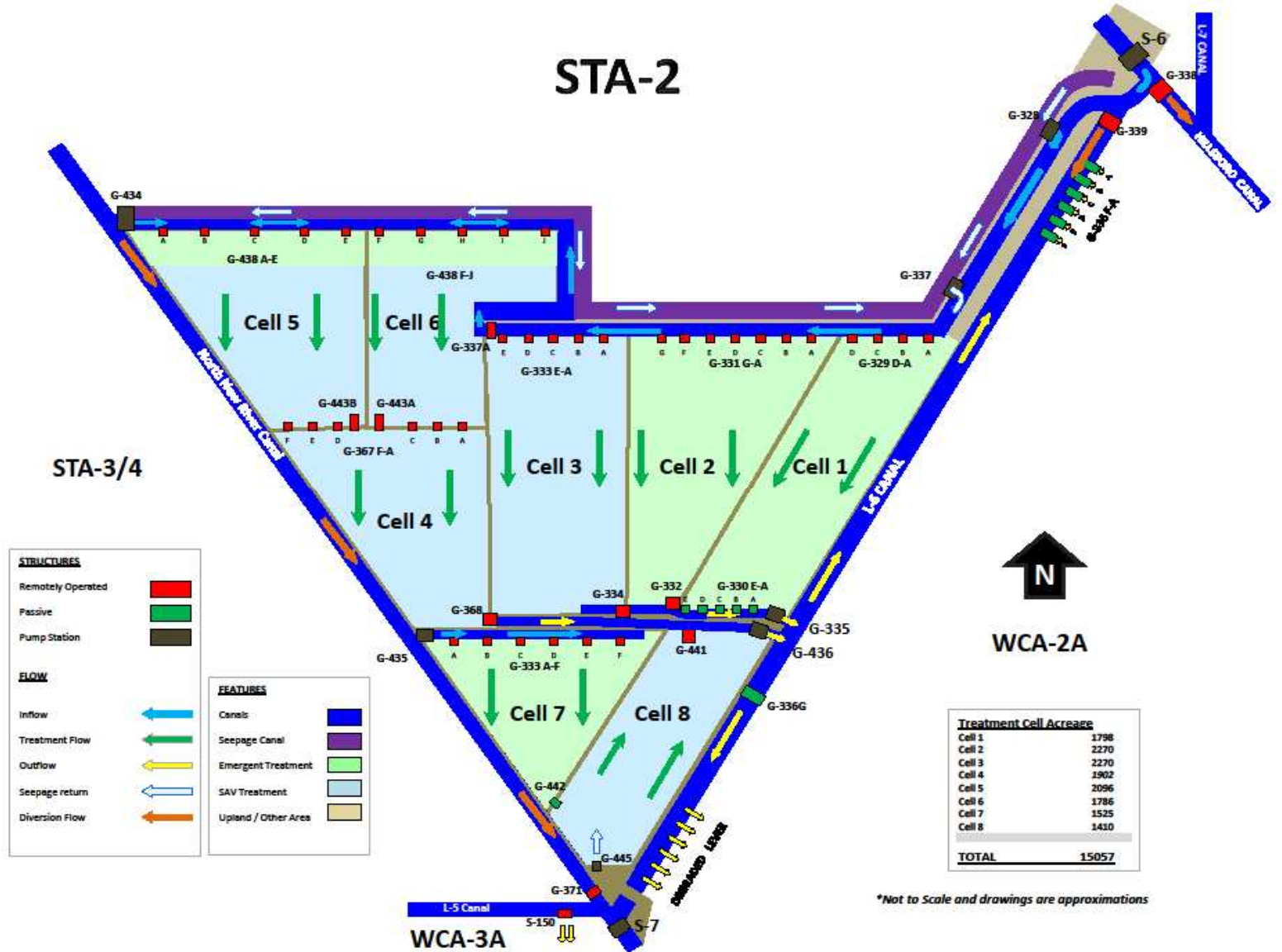
Pilot Rehab Projects in STA 1E

Lou Toth, Principal Scientist
Operations, Maintenance and Construction Division
South Florida Water Management District



SOUTH FLORIDA WATER MANAGEMENT DISTRICT

STA-2



sfwmd.gov

Compartment B

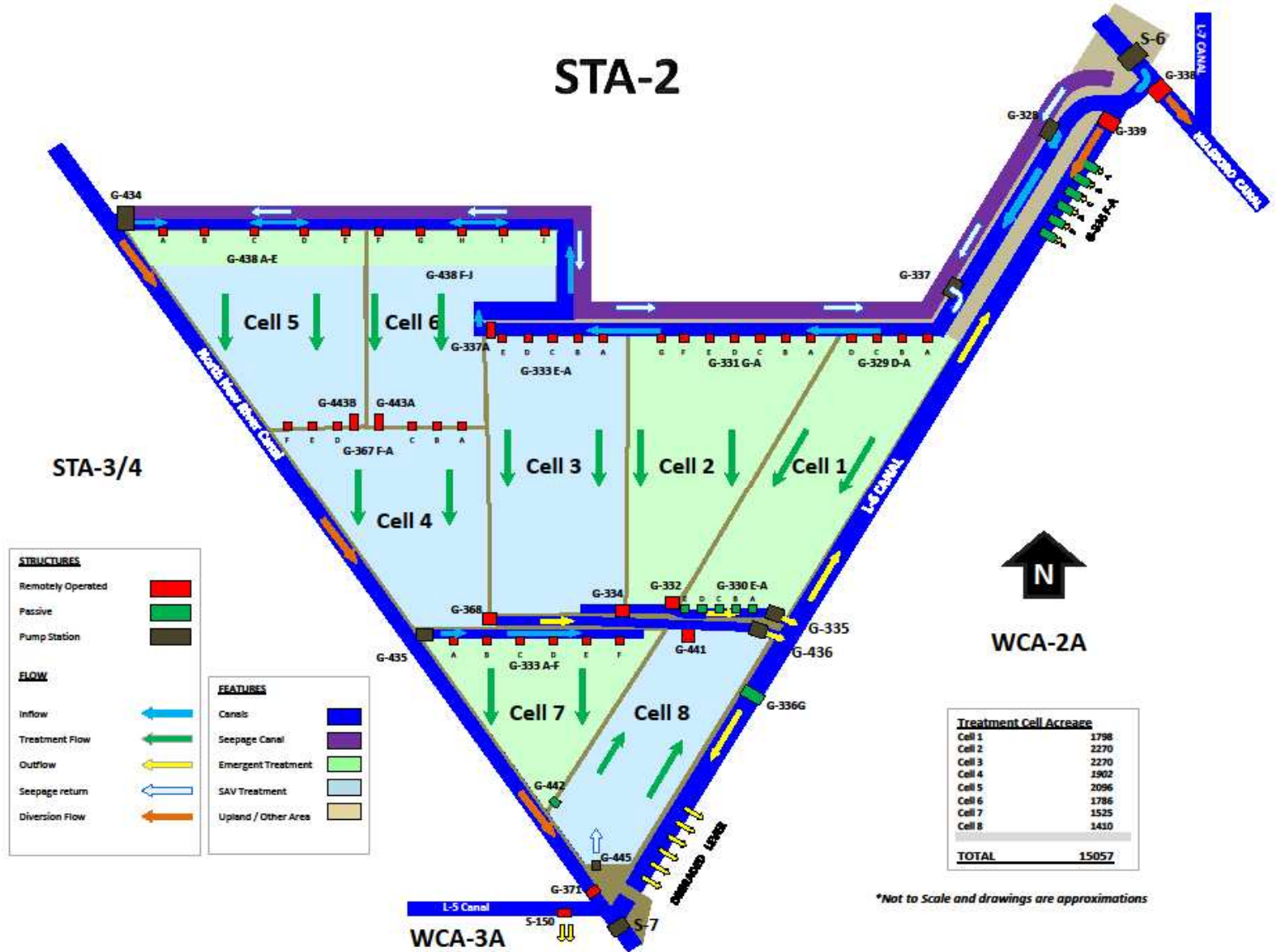






SOUTH FLORIDA WATER MANAGEMENT DISTRICT

STA-2

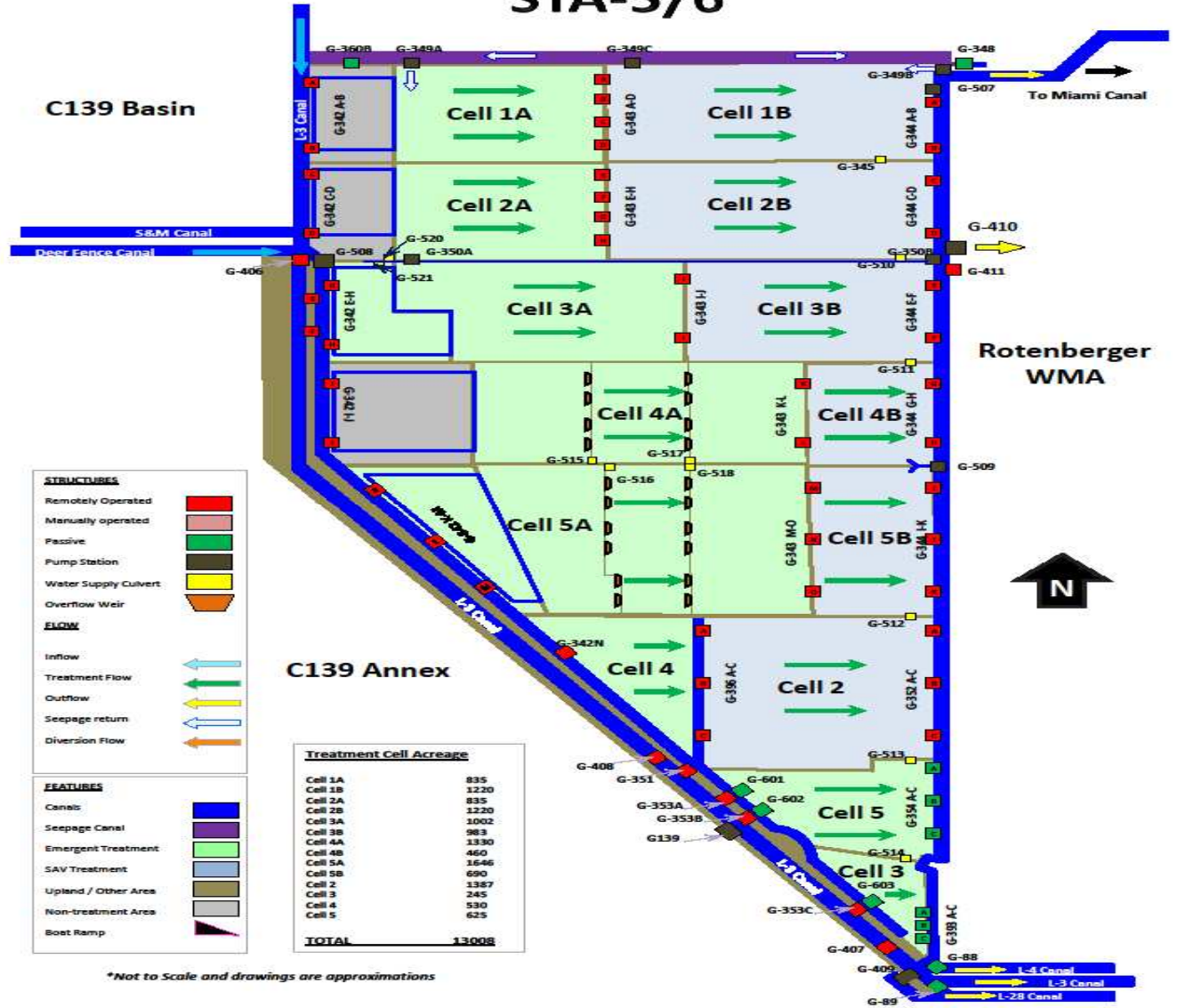


*Not to Scale and drawings are approximations



SOUTH FLORIDA WATER MANAGEMENT DISTRICT

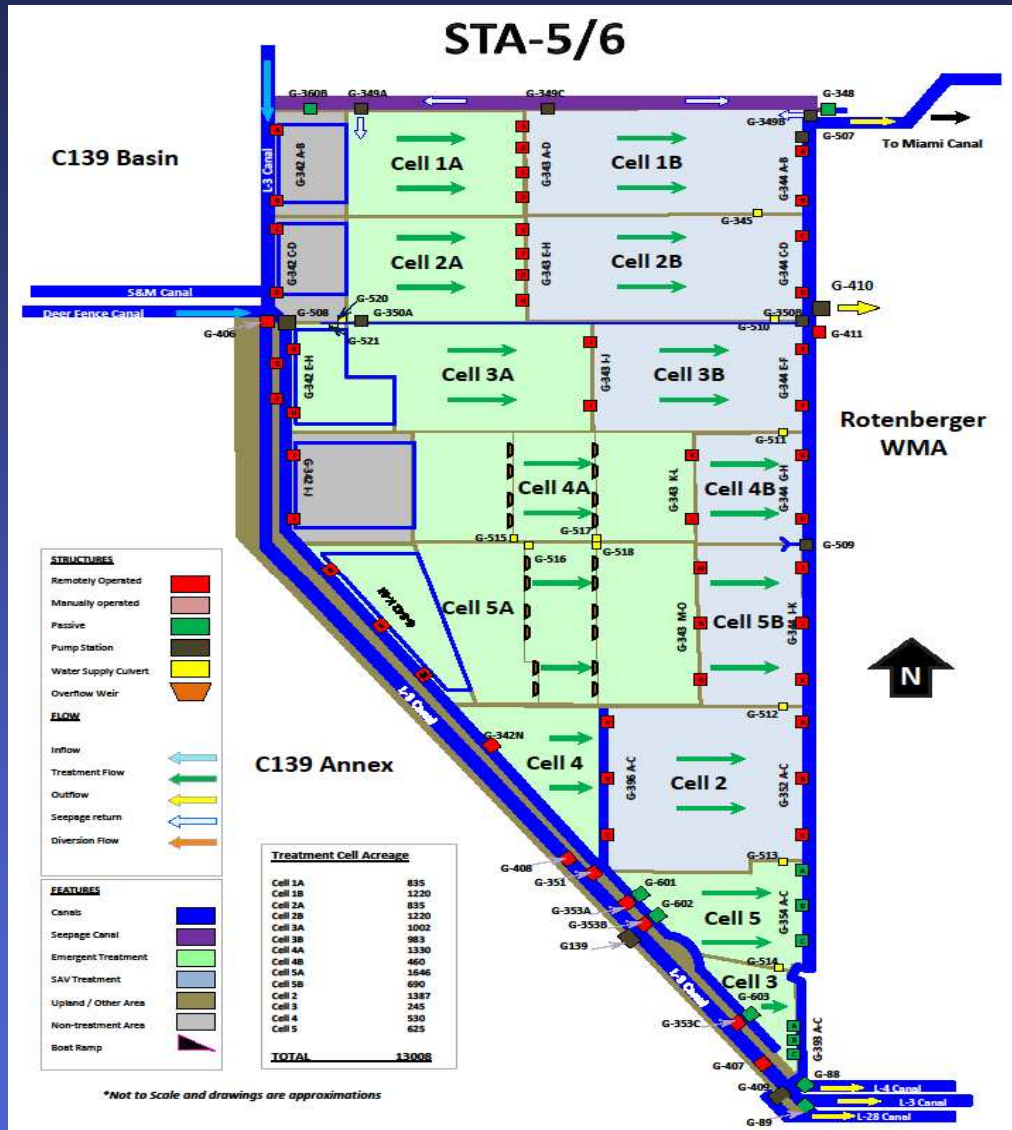
STA-5/6







SOUTH FLORIDA WATER MANAGEMENT DISTRICT



Planned

Inoculation of
Cell 3B





STA 1E – Cell 7



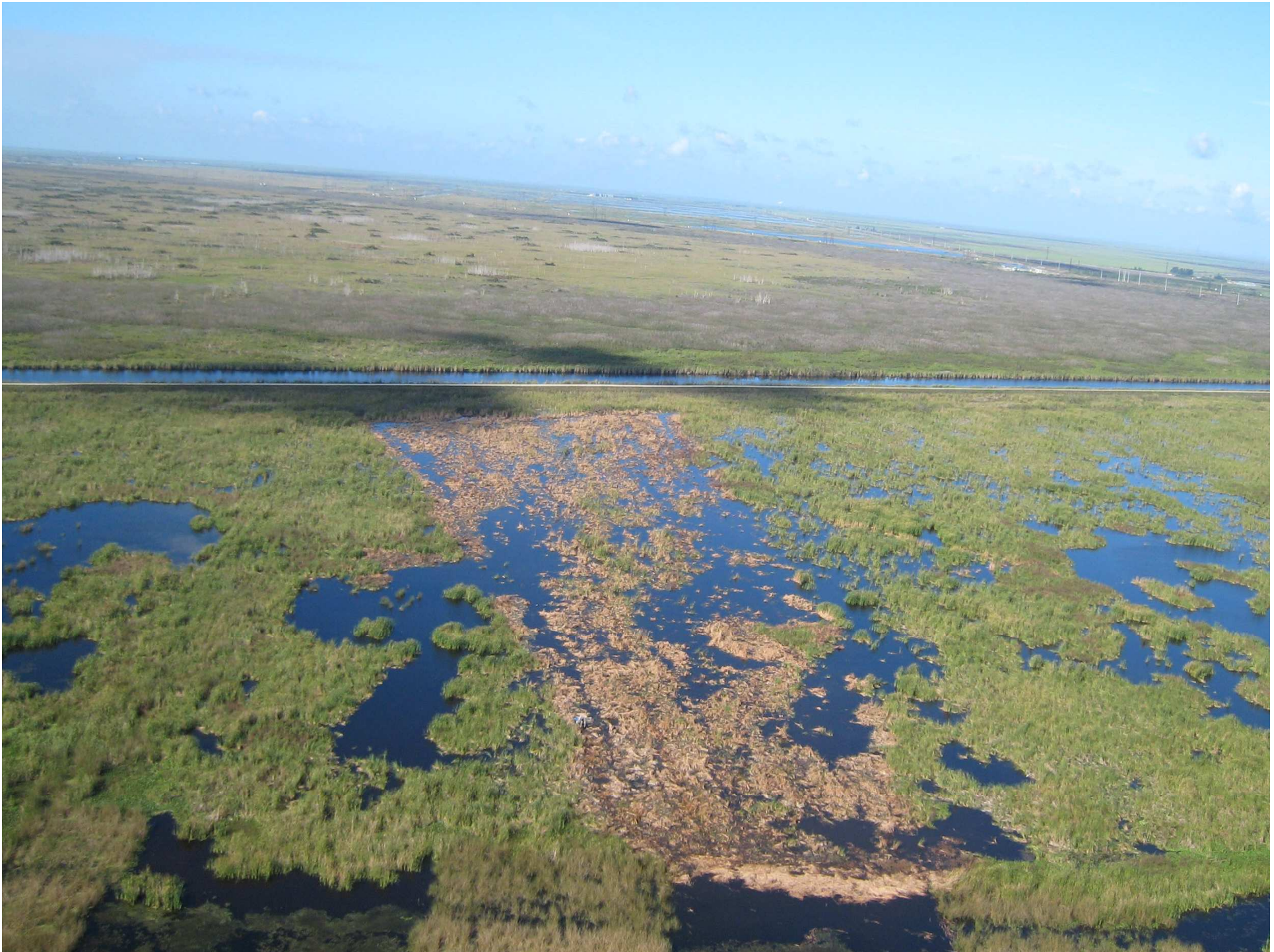
Cell 7 Pilot Project

- Mechanical Harvesting – November – December 2011
- Bulrush Planting – April – May 2012













STA 1E – Cell 5



Cell 5 Pilot Project

- Herbicide Treatments – November 2011
- Stage lowered, attempted burn, brush cut – February – May 2012
- Monitor Cattail Recruitment – May –June 2012
- Bulrush Planted – June 2012









Questions

