



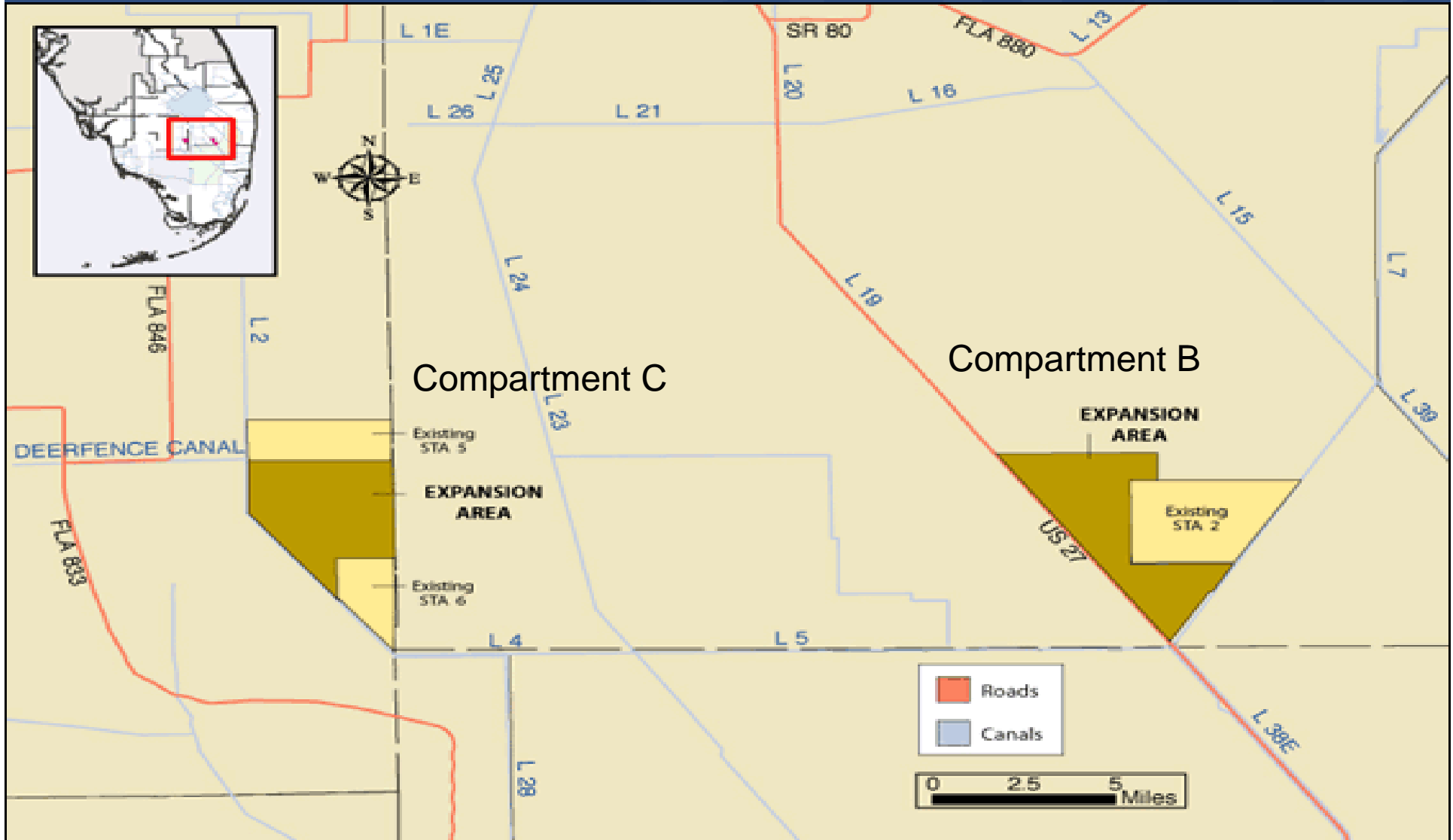
**Quarterly Communications Meeting on the Long-Term Plan for
Achieving Water Quality Goals for the
Everglades Protection Area Tributary Basins**

August 22, 2012

**Compartment B and Compartment C Buildouts
Stormwater Treatment Areas
Construction Update**

*Matthew Alexander, P.E., Project Manager
Engineering and Construction Bureau
South Florida Water Management District*

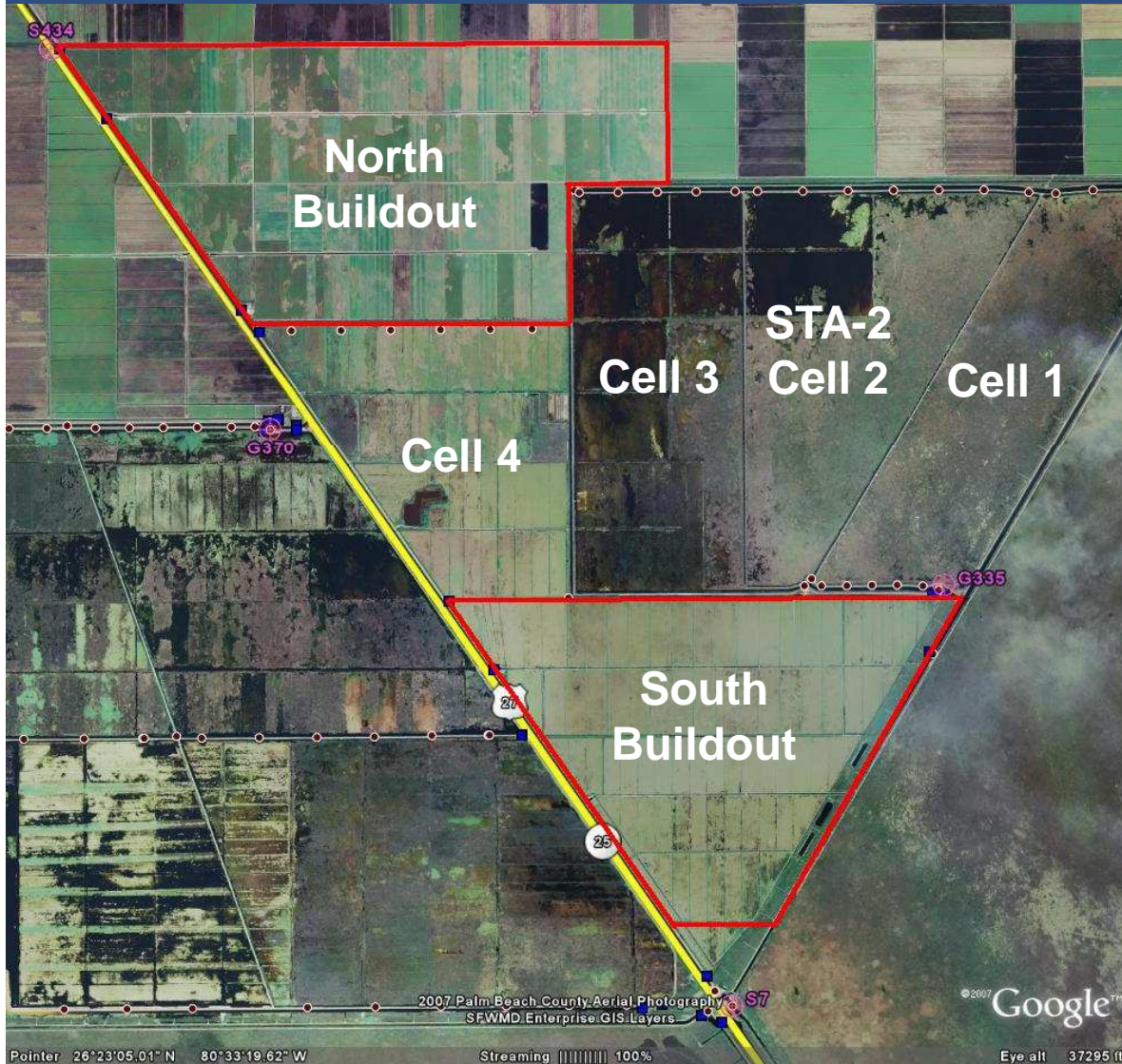
Location of Compartments B and C



Basis and Purpose

- Component of the Everglades Construction Project and the Everglades Protection Area Tributary Basins Long-Term Plan for Achieving Water Quality Goals (Long-Term Plan)
- Included in the 10-Year Strategic Plan and the Current Annual Plan
- Assist with Redistribution of Flows and Loads in the Stormwater Treatment Area (STA) System to Achieve Optimal Performance

Compartment B Buildout

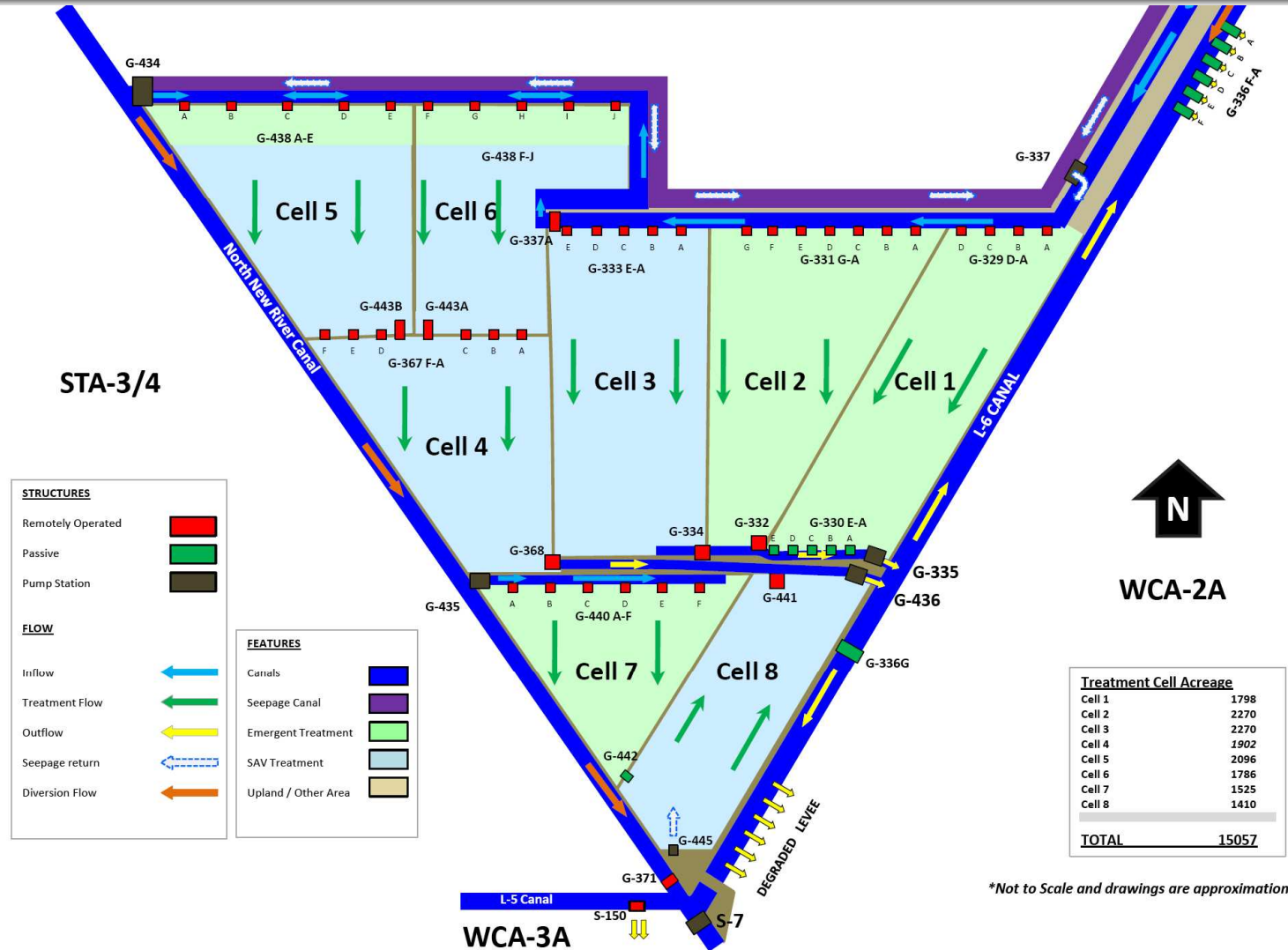


- East of U.S. 27 and STA-3/4
- West of STA-2

Compartment B Buildout

- Accomplishments to date:
 - Completed Final Design - STA, Pump Stations, G-434 & G-435 Bridges
 - Completed Pump Equipment Procurement Contract
 - Received Construction Permits
 - North and South Buildout STAs
 - Notice to Proceed (NTP) June 1, 2009 for North and South Buildouts
 - Achieved Flow Capable Milestone for the North & South Buildout STAs - December 2010
 - Achieved Final Completion on North Buildout STA on Oct 22, 2011 and South Buildout Nov 8, 2011
 - Continued Construction – G-434 and G-436 Pump Stations
 - Issued NTP September 14 & 17, 2009
 - Completed Superstructure at G-435, G-434 & G-436 Pump Stations
 - Installed Pumping Equipment
 - Completed Construction - G-435 Pump Station on January 24, 2012
 - **Completed Construction – G-434 & G-436 Pump Stations on August 7, 2012**

Compartment B Buildout



*Not to Scale and drawings are approximations

G-434 Pump Station - June 2012



G-435 Pump Station - December 2011



G-435 Pump Station – April 2012



G-435 Pump Station



G-436 Pump Station - June 2012



G-436 Pump Station



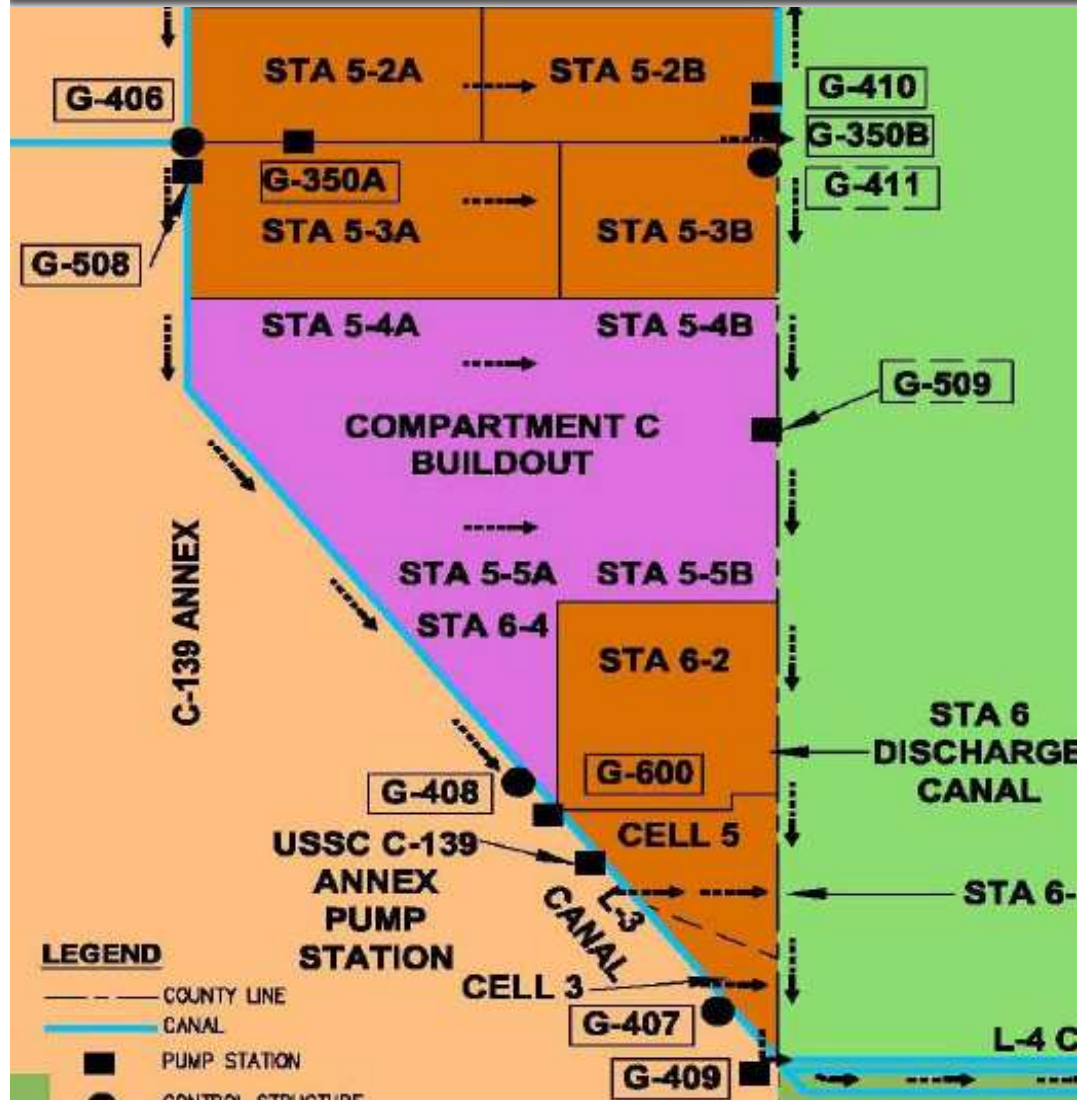
G-436, 533 cfs pump



G-436 Pump Station

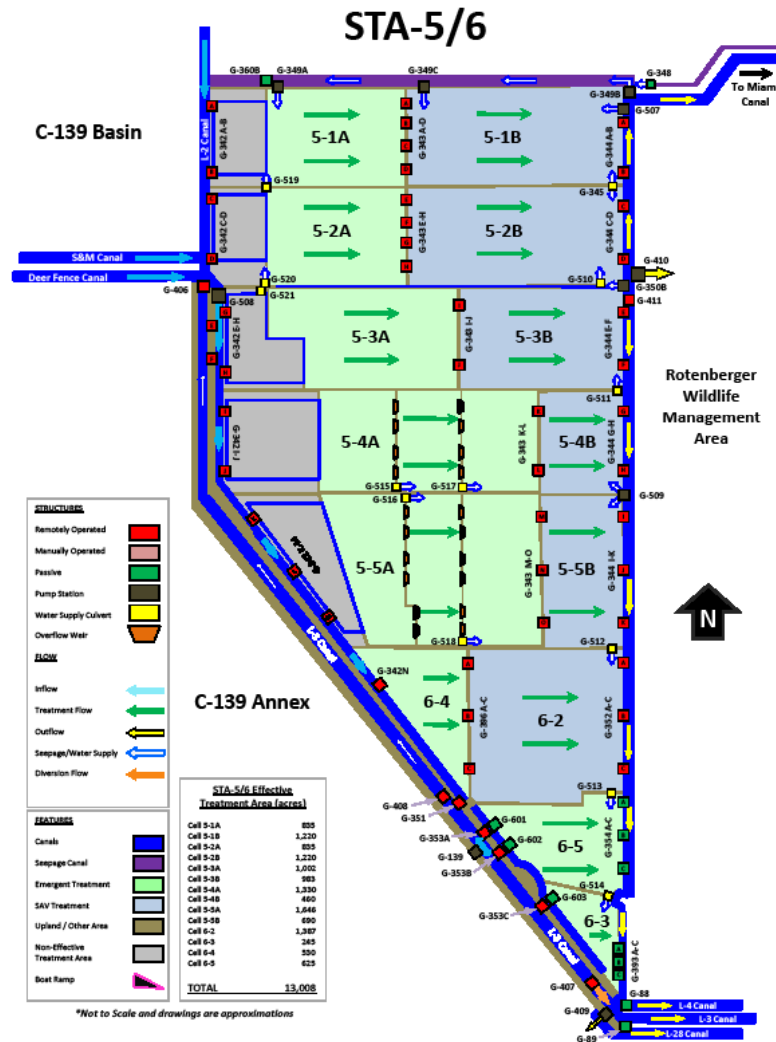


Compartment C Buildout



- East of Feeder Canal, L-28 and C-139 Basins
- West of Rotenberger Wildlife Management Area

Compartment C Buildout



Compartment C Buildout

- Accomplishments to date:
 - Completed Final Design-STA and Pump Station
 - Completed Pump Equipment Procurement Contract
 - Received Construction Permits

- Completed Construction of STA
 - Issued NTP April 6, 2009
 - Achieved Flow Capable Milestone December 2010
 - Achieved Final Completion on September 18, 2011
- Continued Construction of G-508 Pump Station
 - Issued NTP September 1, 2009
 - Installed Diesel and Electric Pumps
 - Completed Superstructure
 - **Completed Construction of G-508 – August 30, 2012**

G-508 Pump Station – July 2012



G-508 – March 2012



G-508



G-508



Questions?

