

Quarterly Communications Meeting on the Long-Term Plan for Achieving Water Quality Goals for the Everglades Protection Area Tributary Basins  
A-1 Flow Equalization Basin (FEB)

November 19, 2013

*John Mitnik, P.E.  
Bureau Chief  
Engineering and Construction Bureau*



# A-1 FEB – Location and Existing Conditions



## A-1 FEB

- Design and Construction Schedule:
  - Preliminary Design – **Completed**
  - Intermediate Design Submittal – **Completed**
  - Final Design Submittal – **Completed**
  - Final Design TRB – **Completed**
  - Corrected Final/RTA Design Submittal – **Completed**
  - Governing Board – **Completed**
  - NTP – December 2, 2013
  - Substantial Completion – April 1, 2015
  - Final Completion – June 1, 2015



# Milestones

Milestone	Compliance date	Status
Initiate design	4/1/2012	Complete
Submit state and federal permits	12/1/2012	Complete
Design status report	3/1/2013	Complete
Complete design	8/1/2013	Complete
Initiate construction	6/30/2014	Complete
Construction status report	3/1/2015	Pending
Construction status report	3/1/2016	Pending
Completion of construction	7/30/2016	Pending
Initial flooding and optimization complete	7/29/2018	Pending

# L-8 Flow Equalization Basin

Long-Term Plan  
Communications Meeting  
November 19, 2013

John Mitnik, PE  
Bureau Chief  
Engineering & Construction Bureau



# Project Location







**Cells 1/2,4,5: -26.9' NAVD**  
**Cell 3: -37.0' NAVD**  
**Cell 6,7: -28.3' NAVD**  
**L-8 Canal: +12.0' NAVD**





# Soil Cement Revetment



2013/11/ 6 PM 1:06



# Design/Build Schedule

- **Governing Board Approval** Completed
- **NTP** Completed
- **Preliminary Design (Revetment)** Completed
- **Preliminary Design (Pump and Inflow)** Completed
- **Final Design (Revetment)** Completed
- **Final Design (Pump and Inflow)** Completed
- **Revetment Construction - 5200 lf (of 5.1 miles) completed**
- **Substantial Completion** April 18, 2015
- **Final Completion** October 15, 2015



# Milestones

Milestone	Compliance date	Status
Submit state and federal permits	1/31/2014	Complete
Construction status report	3/1/2014	Pending
Construction status report	3/1/2015	Pending
Completion of construction	12/31/2016	Pending
Long term operations	12/31/2022	Pending



# Quarterly Communications Meeting on the Long-Term Plan for Achieving Water Quality Goals for the Everglades Protection Area Tributary Basins

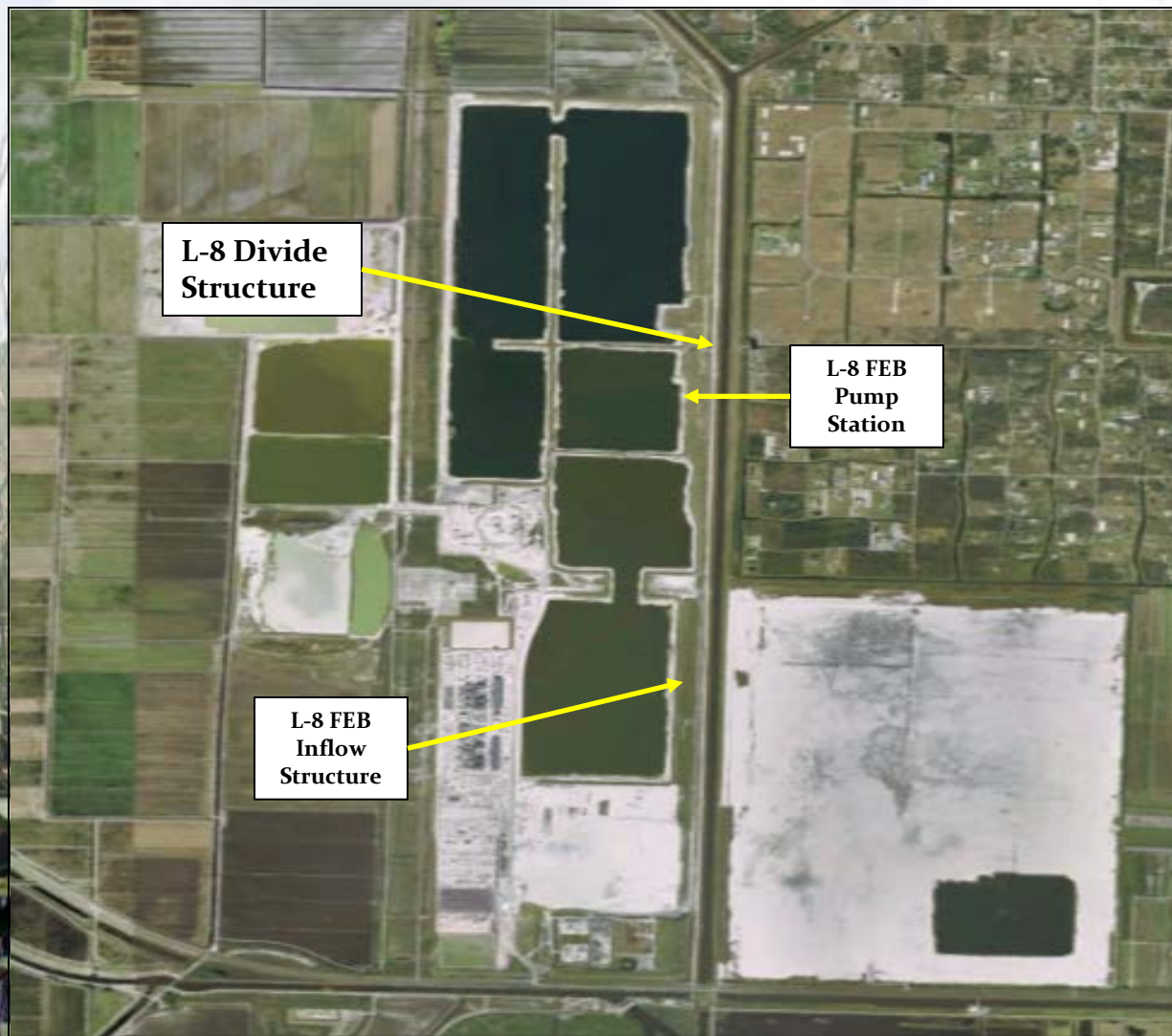
## L-8 Divide Structure

November 19, 2013

*John Mitnik, P.E.  
Bureau Chief  
Engineering and Construction Bureau*

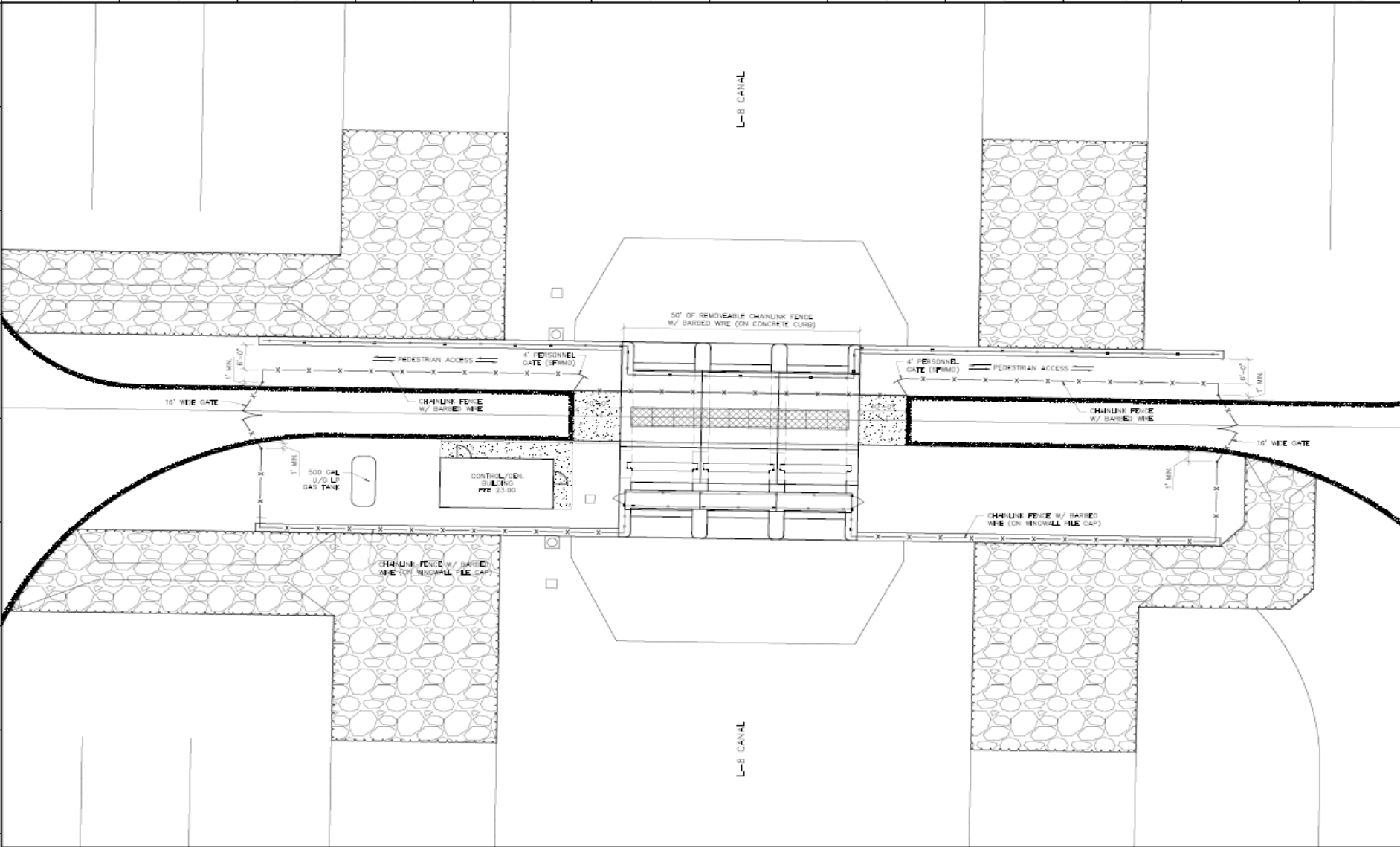


# L-8 Divide Structure, G-541





# L-8 Divide Structure, G-541





# L-8 Divide Structure

## •Design and Construction Schedule:

- Hydrographic & topographic survey for the 26 miles of the L-8 Canal/Levee from C-10A to S-5AS: Completed
  - Hydrologic & Hydraulic modeling efforts for structure design: Completed
  - Geotechnical survey for structure subsurface and seepage analysis: Completed
- |                                  |                                       |
|----------------------------------|---------------------------------------|
| •Preliminary design due :        | <u>Completed</u> (USACE ATR underway) |
| •Final design package due:       | <u>February 2014</u>                  |
| •Notice to Proceed:              | <u>August 2014</u>                    |
| •Project Substantial Completion: | <u>January 2016</u>                   |
| •Project Final Acceptance:       | <u>March 2016</u>                     |



# Milestones

<b>Milestone</b>	<b>Compliance date</b>	<b>Status</b>
Initiate design	10/1/2012	Complete
Complete design	9/30/2014	Pending
Initiate construction	10/1/2016	Pending
Complete construction	9/30/2018	Pending



# Quarterly Communications Meeting on the Long-Term Plan for Achieving Water Quality Goals for the Everglades Protection Area Tributary Basins

## S-5AS Divide Structure

November 19, 2013

*John Mitnik, P.E.  
Bureau Chief  
Engineering and Construction Bureau*



# S-5AS Divide Structure





# S-5AS Divide Structure

## •Design and Construction Schedule:

- Comprehensive Fluid Dynamic Model: Complete
- Structure Stability Review: Complete
- Preliminary design due: February 28, 2014
- Final design package due: May 30, 2014
- Project out for Bid: July 1, 2014
- Governing Board Approval : August 15, 2014
- Notice to Proceed : September 1, 2014
- Project Substantial Completion : December 15, 2015
- Project Final Acceptance: January 15, 2016

# S-5AS Divide Structure Milestones

Milestone	Compliance date	Status
Initiate design	10/1/2012	Complete
Complete design	9/30/2014	Pending
Initiate construction	10/1/2014	Pending
Complete construction	9/30/2016	Pending



# Quarterly Communications Meeting on the Long-Term Plan for Achieving Water Quality Goals for the Everglades Protection Area Tributary Basins

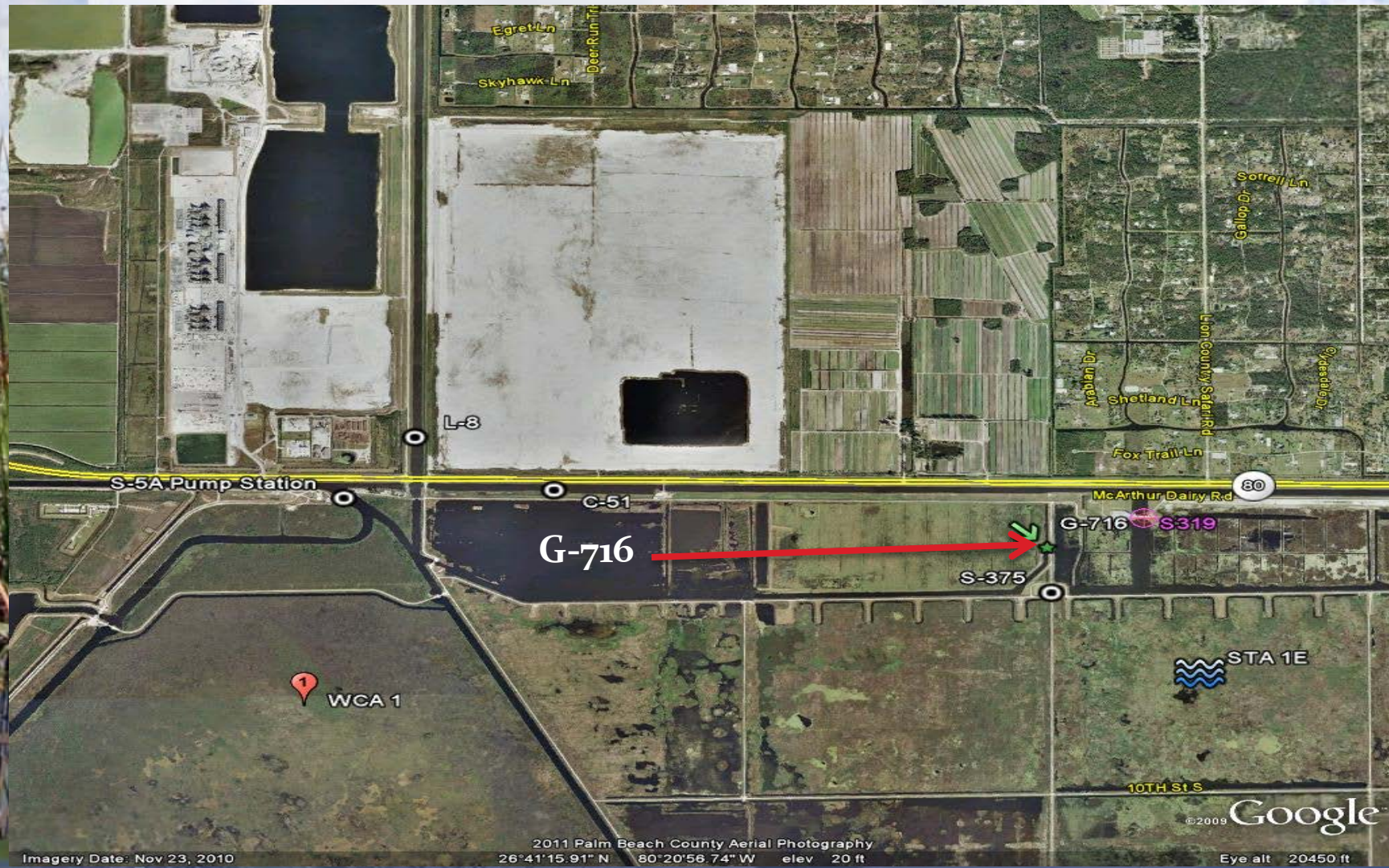
## G-716 Structure

November 19, 2013

*John Mitnik, P.E.  
Bureau Chief  
Engineering and Construction Bureau*



# G-716 Structure



Imagery Date: Nov 23, 2010

2011 Palm Beach County Aerial Photography  
26°41'15.91" N 80°20'56.74" W elev 20 ft

Eye alt 20450 ft



# G-716 Structure





# G-716 Structure

## •Design and Construction Schedule:

- Structure Type Evaluation: Complete
- Structure Flow Calculations : Complete
- Preliminary design due: September 5, 2014
- Final design package due: February 20, 2015
- Project out for Bid: April 5, 2015
- Governing Board Approval: May 10, 2015
- Notice to Proceed: May 15, 2015
- Project Substantial Completion: November 30, 2016
- Project Final Acceptance: December 31, 2016



# G-716 Structure

<b>Milestone</b>	<b>Compliance date</b>	<b>Status</b>
Initiate design	9/30/2013	Complete
Complete design	7/30/2015	Pending
Initiate construction	1/31/2016	Pending
Complete construction	12/31/2018	Pending



# Questions?

