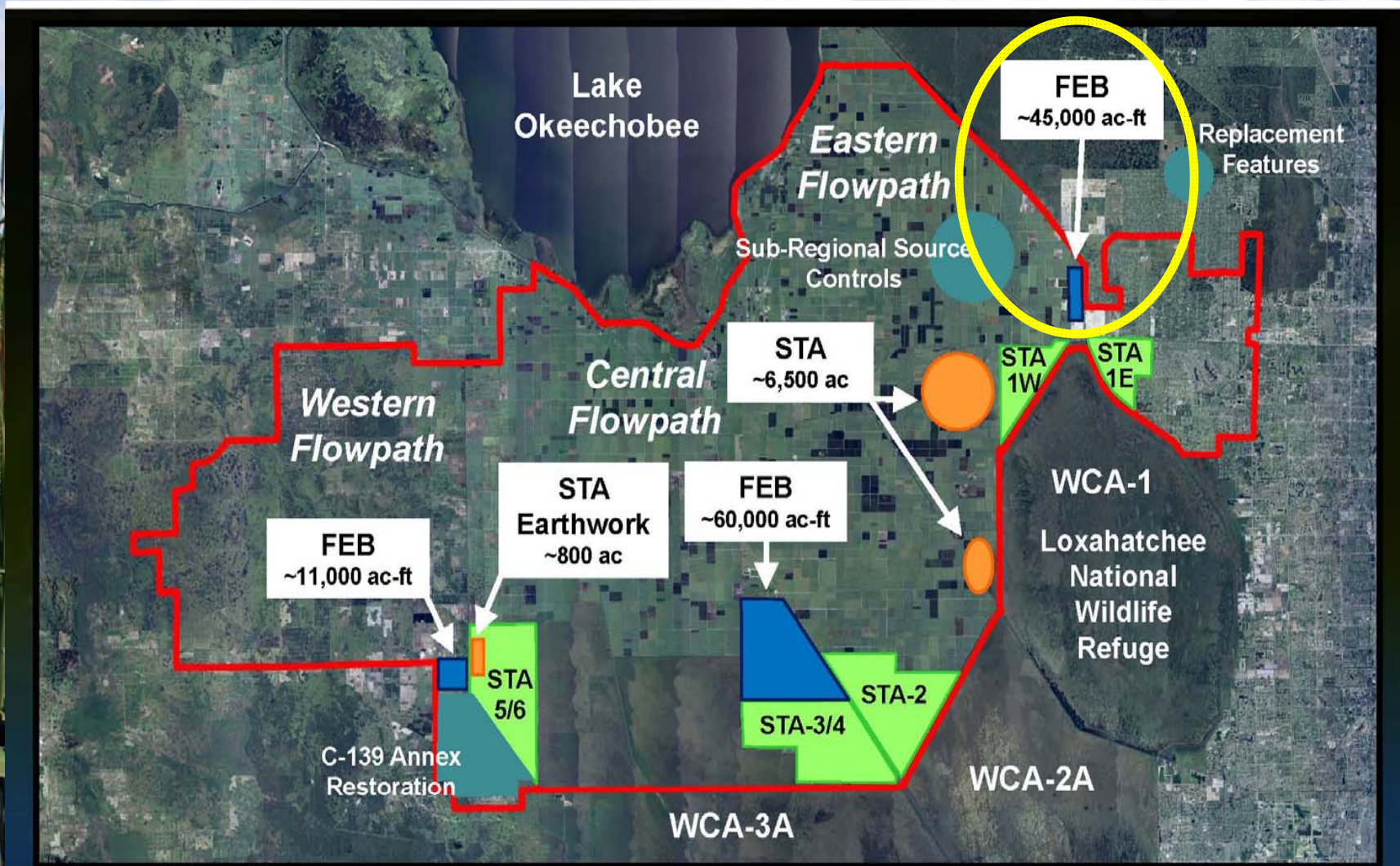


L-8 Flow Equalization Basin

Long-Term Plan
Communications Meeting
February 12, 2013

John Mitnik, PE
Section Administrator
Engineering & Construction Bureau

Restoration Strategies Key Projects



Project Location



SOUTH FLORIDA WATER MANAGEMENT DISTRICT



sfwmd.gov

Restoration Strategies for clean water for the Everglades

Design/Build Schedule

- **Governing Board Approval – Completed**
- **NTP – Completed**
- **Preliminary Design (Revetment) – Completed**
- **Preliminary Design (Pump Station and Inflow) – Completed**
- **Final Design (Revetment) – Completed**
- **Final Design (Pump Station) – May 30, 2013**
- **Final Design (Inflow) – June 17, 2013**
- **Revetment Construction Starts – June 13, 2013**
- **Substantial Completion – April 18, 2015**
- **Final Completion – October 15, 2015**

Milestones

| Milestone | Compliance date | Status |
|----------------------------------|-----------------|---------|
| Submit state and federal permits | 1/31/2014 | Pending |
| Construction status report | 3/1/2014 | Pending |
| Construction status report | 3/1/2015 | Pending |
| Completion of construction | 12/31/2016 | Pending |
| Long term operations | 12/31/2022 | Pending |

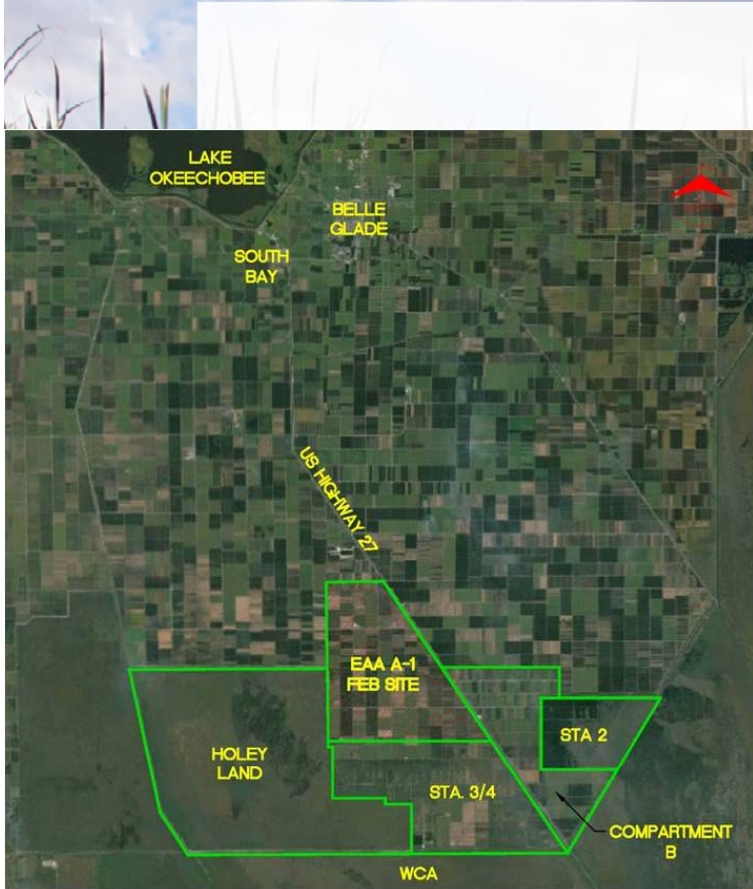
Quarterly Communications Meeting on the Long-Term Plan for Achieving Water Quality Goals for the Everglades Protection Area Tributary Basins

A-1 Flow Equalization Basin (FEB)

February 12, 2013

*John Mitnik, P.E., Section Administrator
Engineering and Construction Bureau*

A-1 FEB – Location and Existing Conditions



A-1 FEB

- Design and Construction Schedule:
 - Preliminary Design – **Completed**
 - Intermediate Design Submittal – **Completed**
 - Final Design Submittal – May 6, 2013
 - Final Design TRB – June 6, 2013
 - Corrected Final/RTA Design Submittal – July 22, 2013
 - Governing Board – October 2013
 - NTP – November 1, 2013
 - Substantial Completion – December 31, 2014
 - Final Completion – March 31, 2015

Milestones

| Milestone | Compliance date | Status |
|--|-----------------|-------------------------|
| Initiate design | 4/1/2012 | Completed (12/16/10) |
| Submit state and federal permits | 12/1/2012 | Completed (9/17/12) |
| Design status report | 3/1/2013 | Completed (2/1/13) |
| Complete design | 8/1/2013 | Pending |
| Initiate construction | 6/30/2014 | Pending |
| Construction status report | 3/1/2015 | Pending |
| Construction status report | 3/1/2016 | Pending |
| Completion of construction | 7/30/2016 | Pending |
| Initial flooding and optimization complete | 7/29/2018 | Pending |

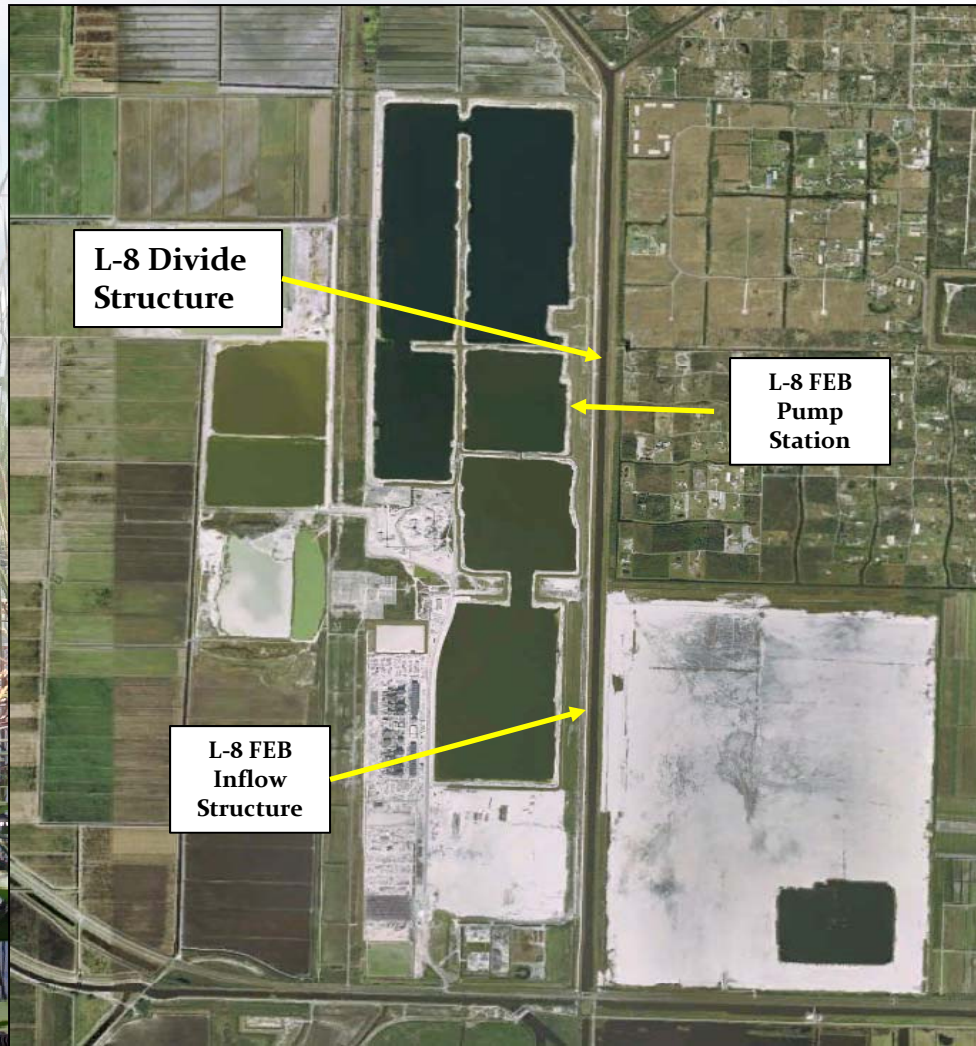
Quarterly Communications Meeting on the Long-Term Plan for Achieving Water Quality Goals for the Everglades Protection Area Tributary Basins

L-8 Divide Structure

February 12, 2013

*John Mitnik, P.E., Section Administrator
Engineering and Construction Bureau*

L-8 Divide Structure, G-541



L-8 Divide Structure, G-541

Typical SFWMD
Vertical Lift, Gated
Spillway Structure



L-8 Divide Structure

- **Design and Construction Schedule:**

- **Hydrographic & topographic survey underway – 26 miles of L-8 cross sections**
- **Hydrologic & Hydraulic modeling efforts underway for structure design**
- **Geotechnical survey has been initiated for structure subsurface and seepage analysis**

- **Preliminary design due - July 2013**

- **Intermediate Design Submittal Deadline – September 2013**

- **Final design package due - February 2014**

- **Notice to Proceed – June 2014**

- **Project Substantial Completion – November 2015**

- **Project Final Acceptance – January 2016**

Milestones

| Milestone | Compliance date | Status |
|-----------------------|-----------------|---------------------|
| Initiate design | 10/1/2012 | Completed (9/10/12) |
| Complete design | 9/30/2014 | Pending |
| Initiate construction | 10/1/2016 | Pending |
| Complete construction | 9/30/2018 | Pending |

Questions?

