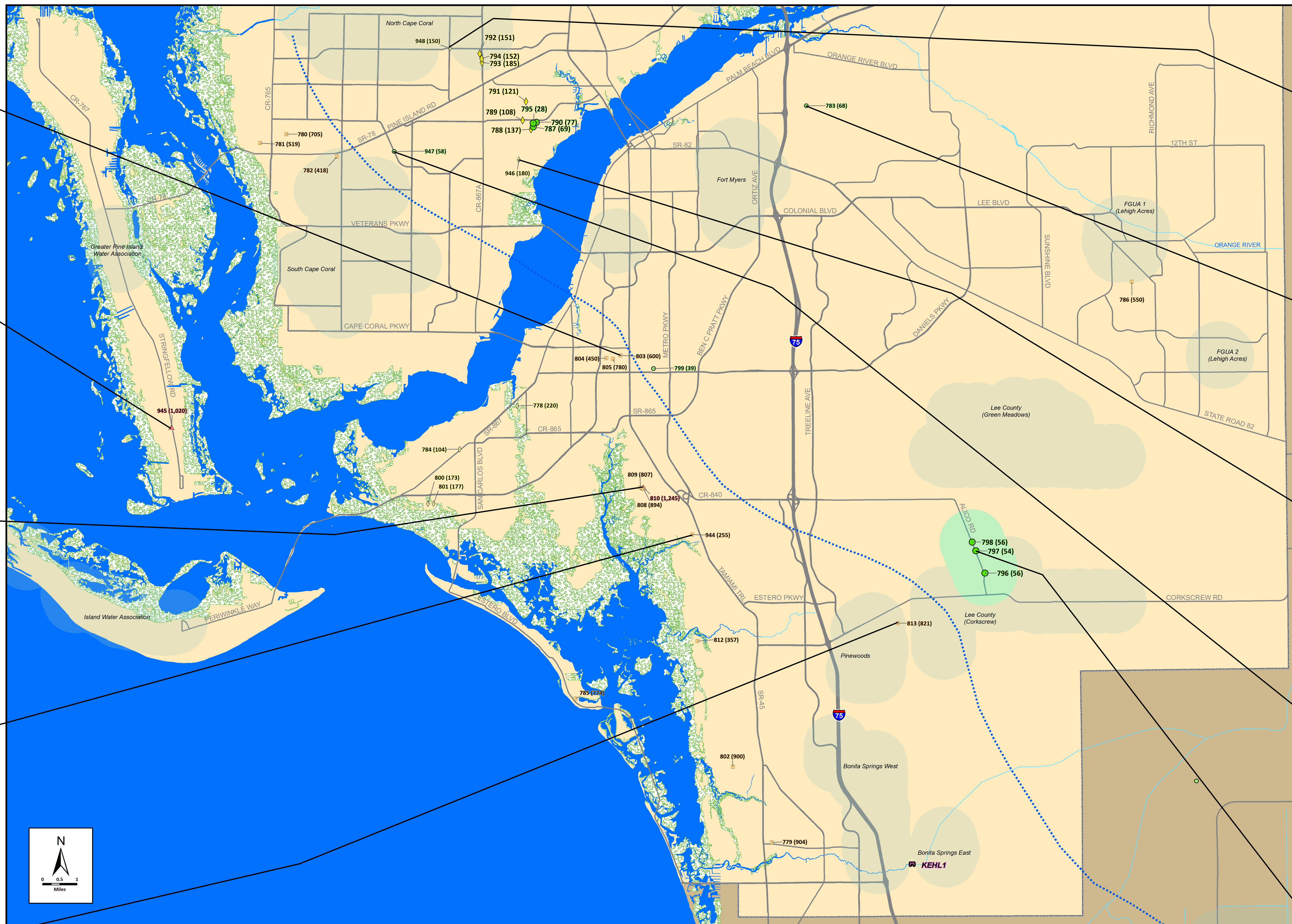
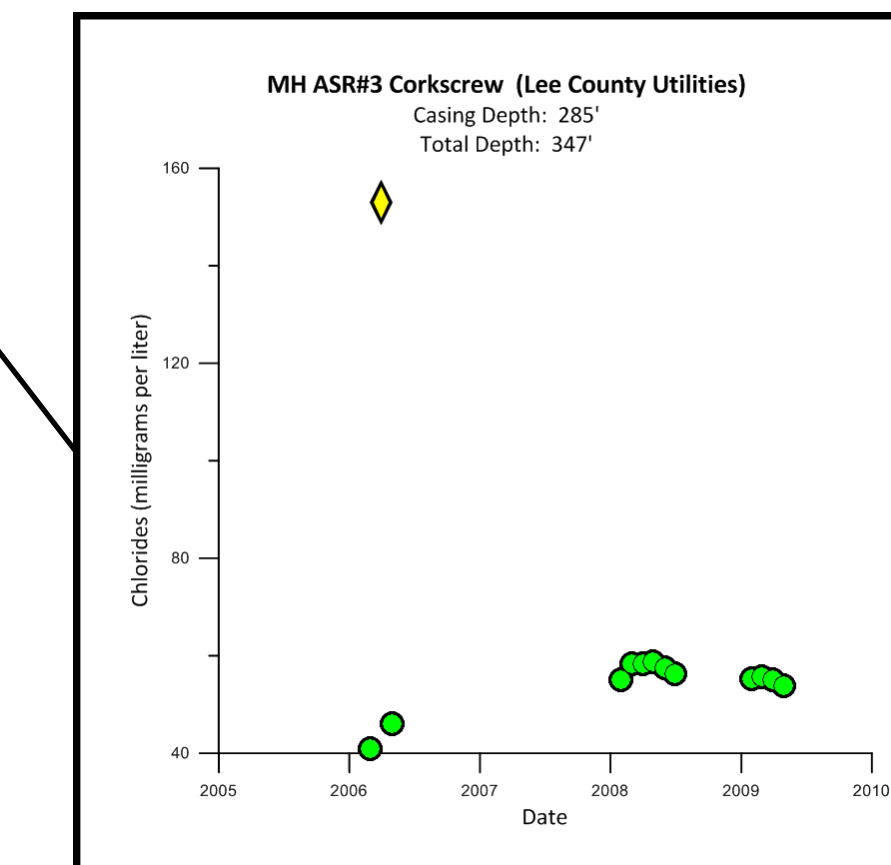
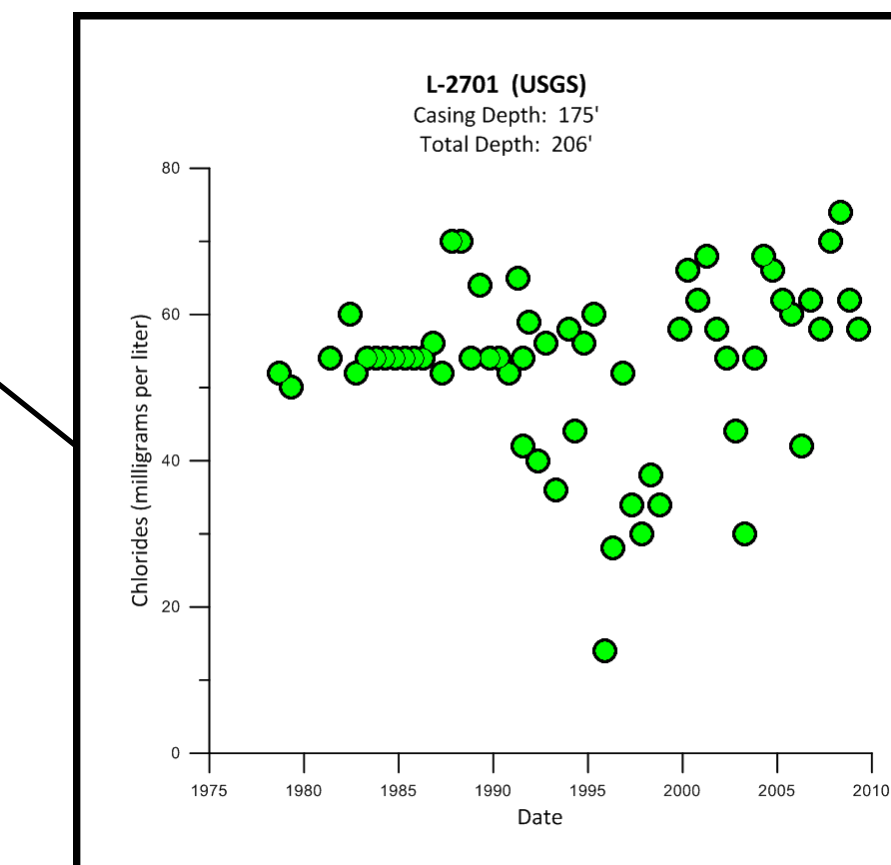
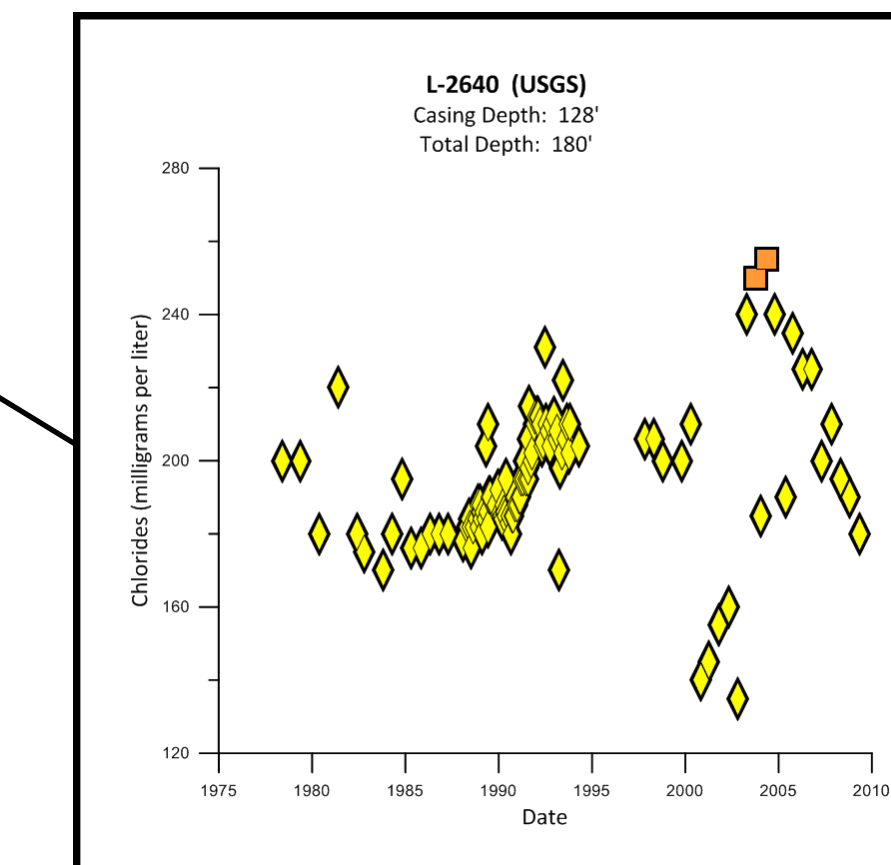
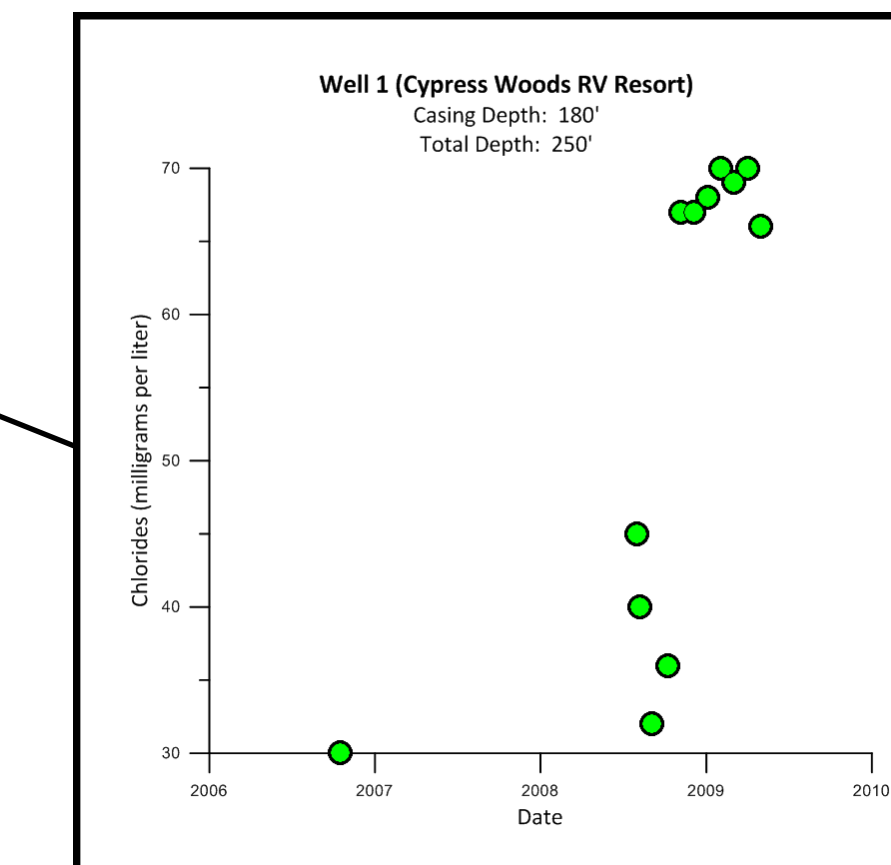
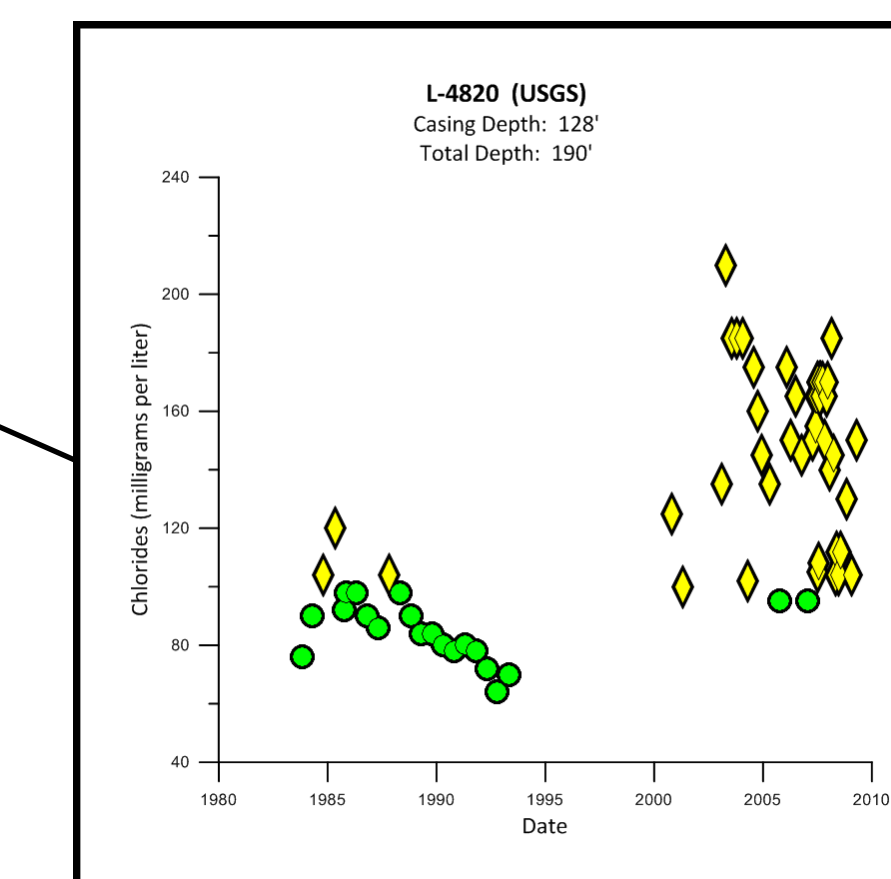
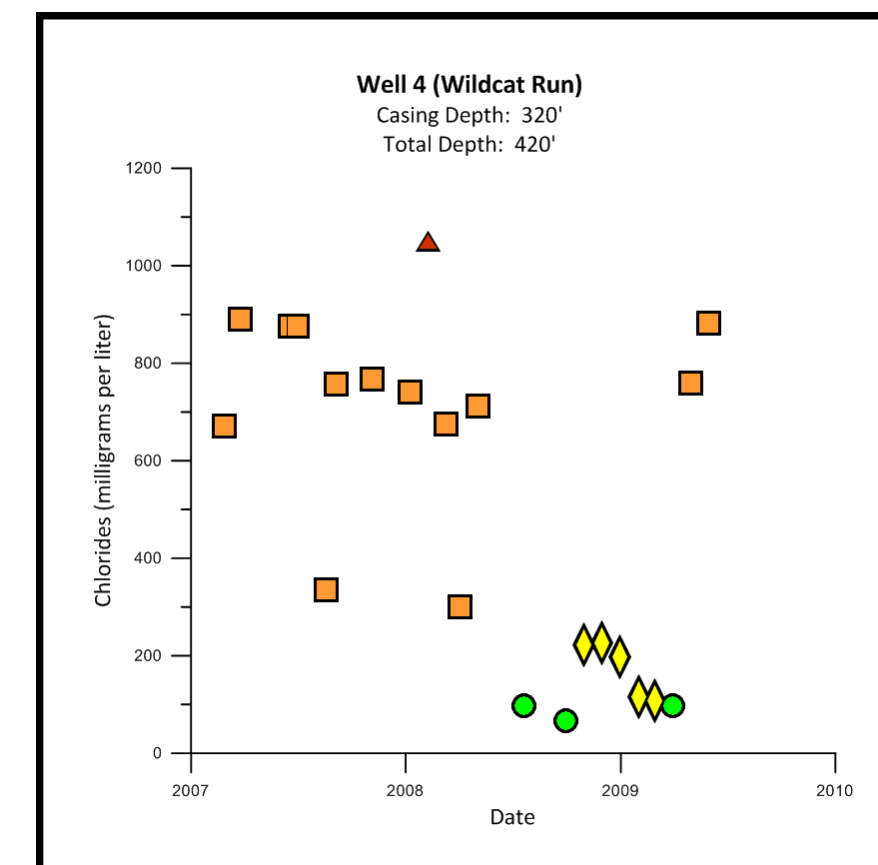
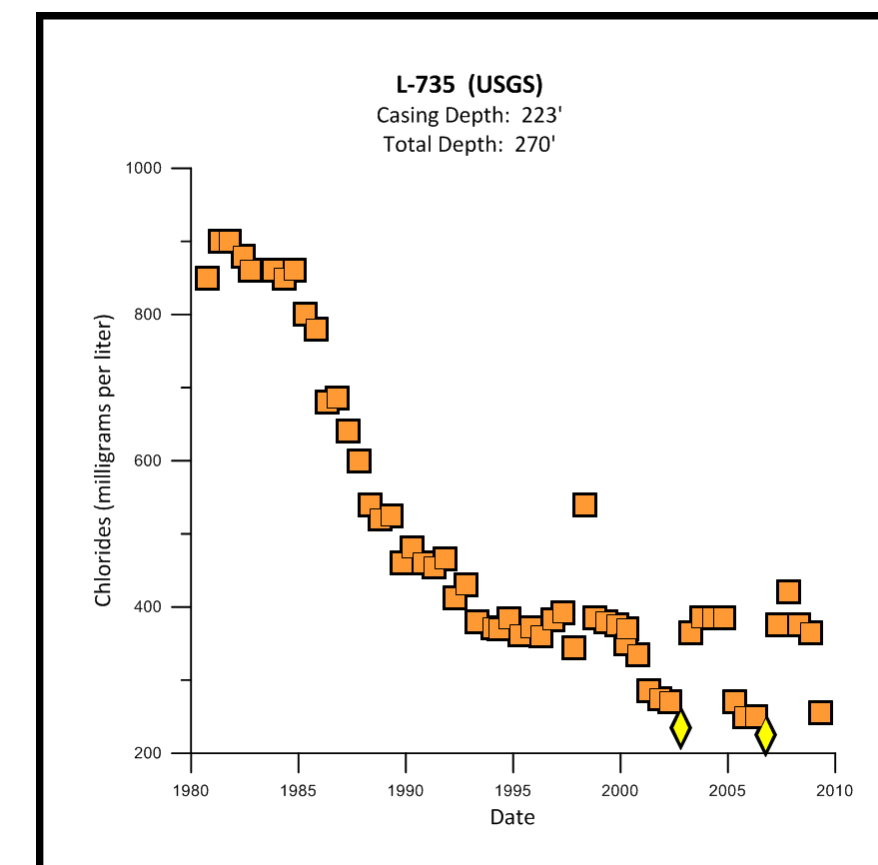
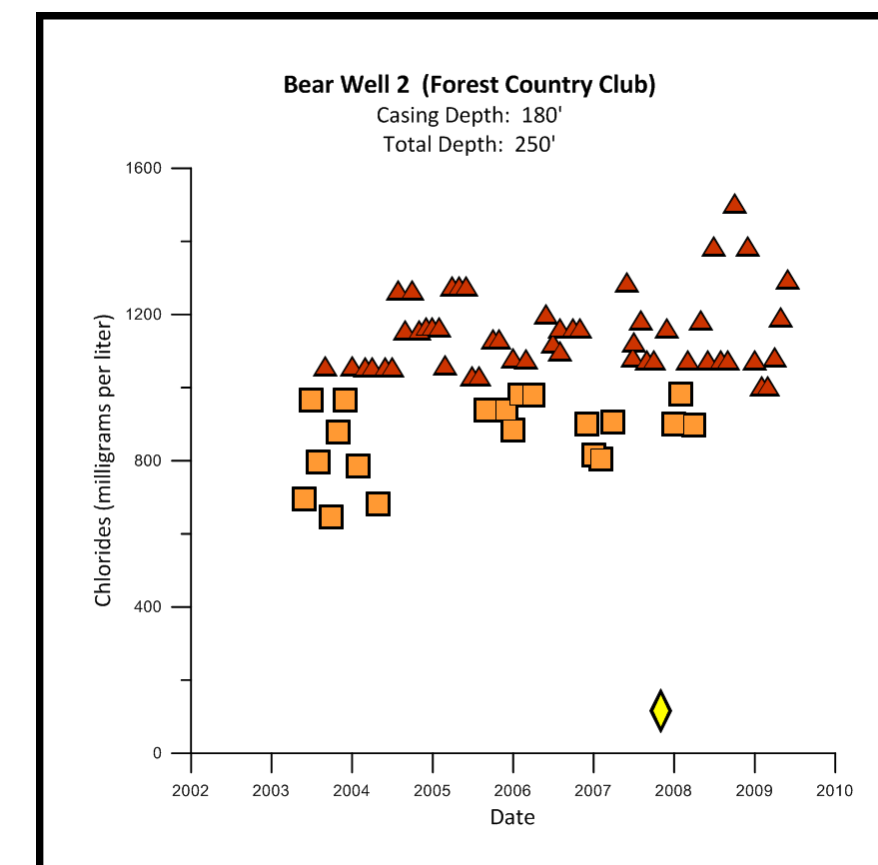
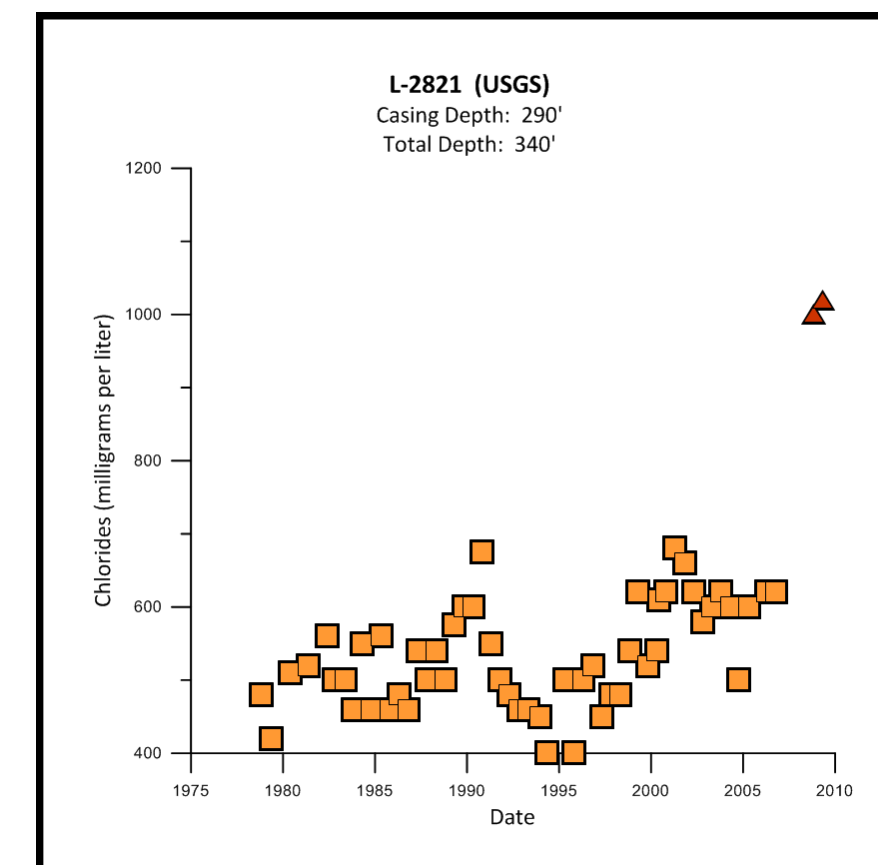
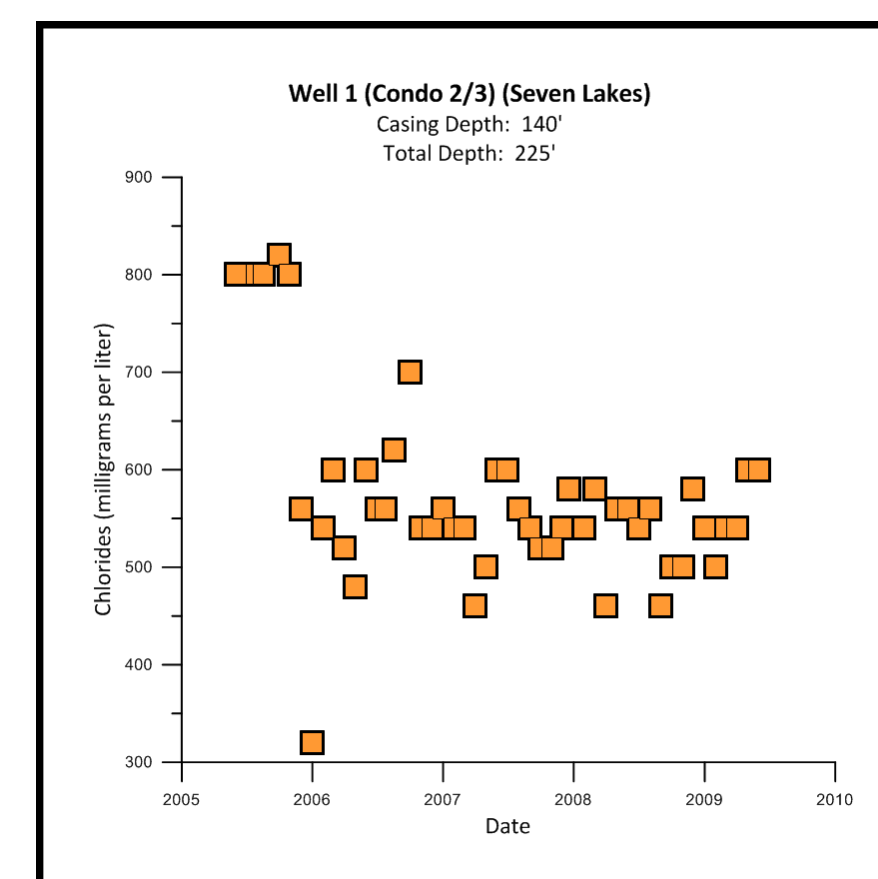


# Lee County Estimated Position of the Saltwater Interface Mid-Hawthorn Aquifer April/May 2009



Map Number	SFWMD Facility ID	Project Name	Well Name	X	Y	Casing Depth (feet bbl)	Total Depth (feet bbl)	Average Chloride (mg/L)
7771	186,122	SOUTH SEAS RESORT	MH (Fills Reclaimed Water Tank)	265582	804448	350	420	144
7781	132,950	ASBURY	Monitor Well	354035	800055	145	200	220
7791	30,945	BONITA BAY	H-1-LM-3554	393034	732934	238	271	904
7801	213,122	CITY OF CAPE CORAL CHARTER SCHOOL N AND NEIGHBORHOOD PARK 5	#1	318658	841828	240	400	705
7811	195,484	CITY OF CAPE CORAL NEIGHBORHOOD PARK FOUR	Well 1	314638	840458	240	400	519
7821	30,872	CORAL RIDGE FUNERAL HOME AND CEMETERY, INC.	1	326405	838860	140	220	418
7831	133,107	CYPRESS WOODS RV RESORT	#1	398900	846200	180	250	68
7841	197,375	FAITH UNITED METHODIST CHURCH EXPANSION	Well -1	345207	793380	180	240	104
7851	4,792	FORT MYERS BEACH GOLF CLUB	1273	362957	755058	178	265	774
7861	198,027	GROVE THE	PW-1	448143	819107	480	682	550
787	30,824	LEE COUNTY UTILITIES NORTH SYSTEM	N-9	356489	842956	130	130	68
788	30,815	LEE COUNTY UTILITIES NORTH SYSTEM	N-6	356145	842591	124	205	137
789	30,817	LEE COUNTY UTILITIES NORTH SYSTEM	N-11	354837	843967	130	230	108
790	30,818	LEE COUNTY UTILITIES NORTH SYSTEM	N-14	356959	843658	136	230	77
791	30,820	LEE COUNTY UTILITIES NORTH SYSTEM	N-15	355370	846872	160	208	121
792	30,820	LEE COUNTY UTILITIES NORTH SYSTEM	NC-1	348273	854228	140	240	151
793	30,821	LEE COUNTY UTILITIES NORTH SYSTEM	NC-2	348638	852865	140	240	185
794	30,822	LEE COUNTY UTILITIES NORTH SYSTEM	NC-9	348590	853459	164	225	152
795	30,826	LEE COUNTY UTILITIES NORTH SYSTEM	N-10	356481	843536	134	235	28
796	128,761	LEE COUNTY UTILITIES PUBLIC WATER SUPPLY	MH ASR#2 Corkscrew	425661	774353	337	397	56
797	128,761	LEE COUNTY UTILITIES PUBLIC WATER SUPPLY	MH ASR#3 Corkscrew	424270	777778	285	347	54
798	128,763	LEE COUNTY UTILITIES PUBLIC WATER SUPPLY	MH ASR#5 Corkscrew	423251	779133	253	291	54
7991	27,382	MADISON AT THE ASHLAR	Well A	374886	805811	200	225	39
8001	127,614	MASTIQUE	WELL #1	340373	785033	130	190	173
8011	127,615	MASTIQUE	WELL #2	341232	785038	130	190	177
8021	32,898	PELICAN'S NEST GOLF CLUB	LM-2333 Well 3	387053	744574	217	320	900
8031	2,312	SEVEN LAKES	Well 1 (Condo 2/3)	369830	807823	140	250	600
8041	2,317	SEVEN LAKES	Well 6 (Condo 8)	367684	807415	140	220	450
8051	3,320	SEVEN LAKES	Well 9 (Condo 4/5)	368718	807285	390	440	780
8061	11,926	SOUTH SEAS RESORT	North End	264907	807570	372	420	118
8071	186,171	SOUTH SEAS RESORT	South End-A	266315	799061	360	420	223
8081	4,722	THE FOREST COUNTRY CLUB	Bear Well 1	373375	787285	180	250	894
8091	4,723	THE FOREST COUNTRY CLUB	BC Well	372917	787515	180	250	897
8101	117,327	THE FOREST COUNTRY CLUB	Bear Well 2	373349	787528	180	250	1,245
811	25,277	USEPPA ISLAND PWS	Well 1	259848	846032	280	320	2,570
8121	191,792	WEST BAY	174-1	381612	783901	200	220	357
8131	158,611	WILDCAT RUN	4	412333	766558	320	420	821
844	NA	USGS 262839081503100	L-735	380815	780278	231	270	255
845	NA	USGS 263117082051002	L-2821	301083	796803	290	340	1,020
846	NA	USGS 2638130815852901	L-2640	354286	817916	128	180	180
847	NA	USGS 263813081585801	L-2701	335192	839169	175	206	58
848	NA	USGS 264053081572501	L-4820	343751	855059	128	190	150

NA = Not Applicable  
† These wells may have less analytical precision.

**Structures**

- Culvert
- Lock
- Pump
- Spillway
- Weir

**PWS† Chlorides**

- <=100 mg/L
- 101 - 250 mg/L
- 251 - 1,000 mg/L
- >1,000 mg/L

**Wells**

- 433 (3900) Map Number

**Non-PWS† Chlorides**

- <=100 mg/L
- 101 - 250 mg/L
- 251 - 1,000 mg/L
- >1,000 mg/L

† PWS = Public Water Supply

**Wellfields in the Mid-Hawthorn Aquifer**

- Wellfields in Other Aquifers
- Saline Water Bodies
- Freshwater Bodies
- Mangrove and Salt Marsh
- Roads
- Estimated 250 mg/L isochlor, 2009 (updated)

Well and chloride information was obtained from USGS and SFWMD records. Chloride values are given in milligrams per liter (mg/L). Map data represent the average of available chloride values for the period of April/May 2009. Graphs of selected wells represent the period of record for each well through May 2014. The dashed isochlor lines mark an approximation of the farthest inland extent of the saltwater interface as defined by the 250 mg/L chloride concentration. The 2009 isochlor was updated in 2014/2015 to incorporate new and corrected data.



**DISCLAIMER:**  
This map is a conceptual tool utilized for project development and implementation only. This map is not self executing or binding, and does not otherwise affect the interests of any person including any vested rights or existing uses of real property. Any information, including but not limited to maps and data, received from the SFWMD is provided "as is" without any warranty, and the SFWMD expressly disclaims all express and implied warranties of merchantability and fitness for a particular purpose. The District does not make any representations regarding the use, or the results of the use, of the information provided to you by the District.