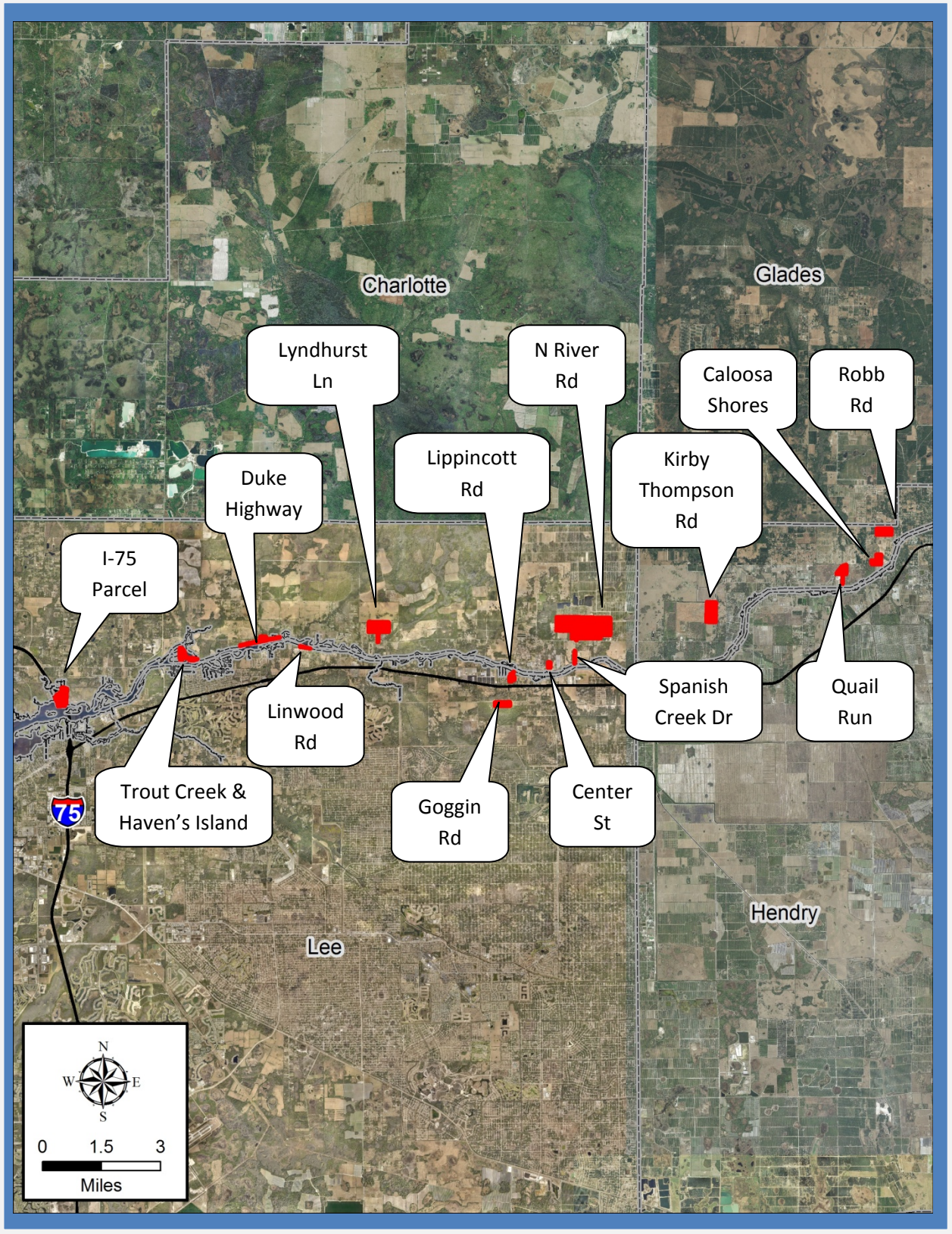


Unassociated Parcels Location Map



IMPORTANT DISCLAIMER: All maps in this document are a conceptual or planning tool only. The South Florida Water Management District does not guarantee or make any representation regarding the information contained herein. It is not self-executing or binding, and does not affect the interests of any persons or properties, including any present or future right or use of real property.

Unassociated Parcels

Lee and Hendry Counties

Site Overview

These are parcels that were not acquired for any restoration or water resource project. There are ten such tracts in this region; all of them were acquired as potential dredge spoil sites for the U.S. Army Corps of Engineers. The District holds the title to these properties and the Army Corps has released them, meaning that they no longer need them for dredge spoil storage.

Assessment Units

Robb Rd – ~ 40.14 Acres

This property, purchased in 1964 with District funds, lies 1 ½ miles west of central Labelle, on Robb Rd.

Spanish Creek Dr. – ~ 2.9 Acres

This property was purchased in 1969 with District funds. It lies 1.15 miles east of the Broadway Street Bridge in Alva, on Spanish Creek Dr.

Center St – ~ 5.36 Acres

This property, acquired in 1974 with District funds, lies 1/2 mile east of the Broadway Street Bridge in Alva, just behind the dead end of Center St.

Lippincott Rd – ~11.63 Acres

This property was purchased in 1974 with District funds. It lies 1/2 mile west of the Broadway Street Bridge, south of the river, on Lippincott Rd.

Goggin Rd – ~ 24.22 Acres

This property lies .4 mile south of the SR 80, and .4 miles east of Coggin Rd, south of the powerlines. It was purchased in 1962 with District funds.



Spanish Creek Dr.



Robb Rd.



Center St



Lippincott Rd



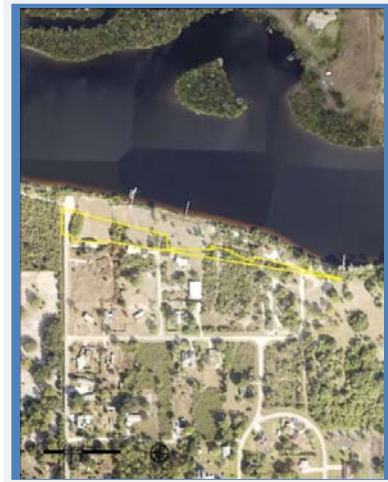
Goggin Rd

IMPORTANT DISCLAIMER: All maps in this document are a conceptual or planning tool only. The South Florida Water Management District does not guarantee or make any representation regarding the information contained herein. It is not self-executing or binding, and does not affect the interests of any persons or properties, including any present or future right or use of real property.

Assessment Units (Continued)

Linwood Rd – ~ 1.81 Acres

This property lies 2/3 mile north of SR 80, south of the river, on Linwood Rd. The property was acquired in 1961 with District funds.



Linwood Rd

Duke Hwy – ~22.71 Acres

This property lies 2/3 mile SW of SR 80, north of the river, just south of Duke Hwy. The parcels were acquired in 1960 and 1961 with District funds.



Duke Hwy

Trout Creek Peninsula – ~ 6.0 Acres

This property lies 1/3 mile south of the dead end of Owl Creek Rd, north of the river, access is by water only. The property was acquired in 1970 with District funds.



Trout Creek Peninsula

Havens Island ~ 22.1 Acres

This property lies just in front of the mouth of Trout Creek, access is by water only. The property was acquired in 1970 with District funds.



Havens Island

I-75 Parcel – ~ 47.3 Acres

This property lies on both sides of I-75 on the north side of the river; it is surrounded by Lee County's Caloosahatchee Creeks Preserve. It was purchased in 1990 with District funds.



I-75 Parcel

IMPORTANT DISCLAIMER: All maps in this document are a conceptual or planning tool only. The South Florida Water Management District does not guarantee or make any representation regarding the information contained herein. It is not self-executing or binding, and does not affect the interests of any persons or properties, including any present or future right or use of real property.

Assessment Units (Continued)

Kirby Thompson Rd – ~77.5 Acres

The property was acquired in 1964 with District funds. The western part of the property is an open field. The eastern part, between a drainage ditch and Hwy 78 is an area of pines, oaks, and exotics.



Kirby Thompson Rd



Lyndhurst Ln

Lyndhurst Ln – ~85.22 Acres

The property was acquired in 1962 with District funds. It is characterized by open fields, Brazilian pepper, and cabbage palms.

Caloosa Shores Dr. – ~ 26.95 Acres

The property was acquired in 1964 with District funds. The eastern side is mostly open; the western side is largely Brazilian pepper and cabbage palms. A small creek runs through the northeast corner.

Quail Run – ~ 24.79 Acres

The property was acquired in 1964 with District funds. The site is predominantly Brazilian pepper, but has some native pines and oaks along the road frontage.

N River Rd – ~412.06 Acres

The property was acquired in 1963 with District funds. It contains a thick cover of Brazilian pepper with scattered pockets of cabbage palms.



Caloosa Shores Dr



Quail Run



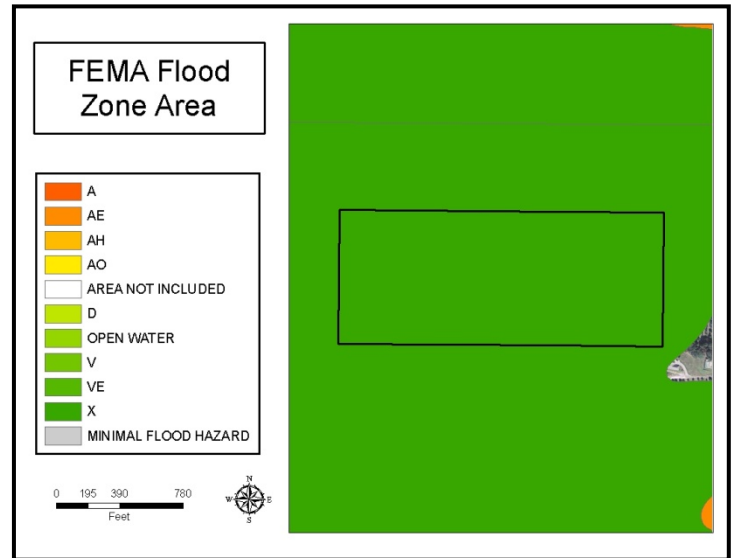
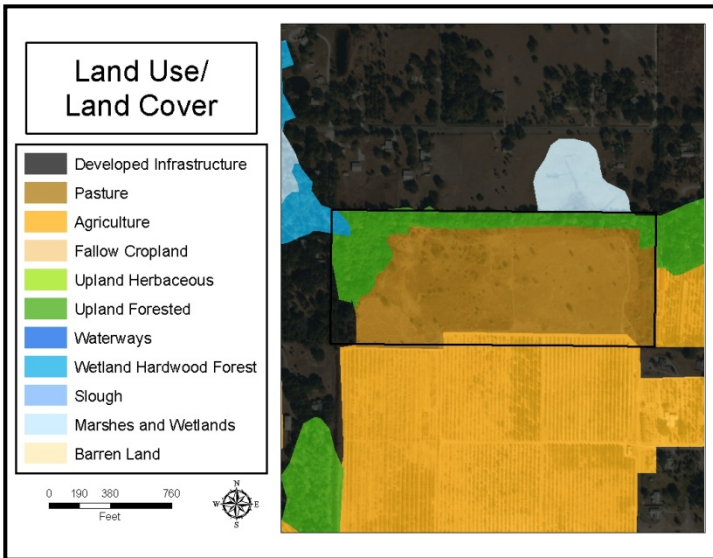
N. River Rd

IMPORTANT DISCLAIMER: All maps in this document are a conceptual or planning tool only. The South Florida Water Management District does not guarantee or make any representation regarding the information contained herein. It is not self-executing or binding, and does not affect the interests of any persons or properties, including any present or future right or use of real property.

Robb Road, Photo



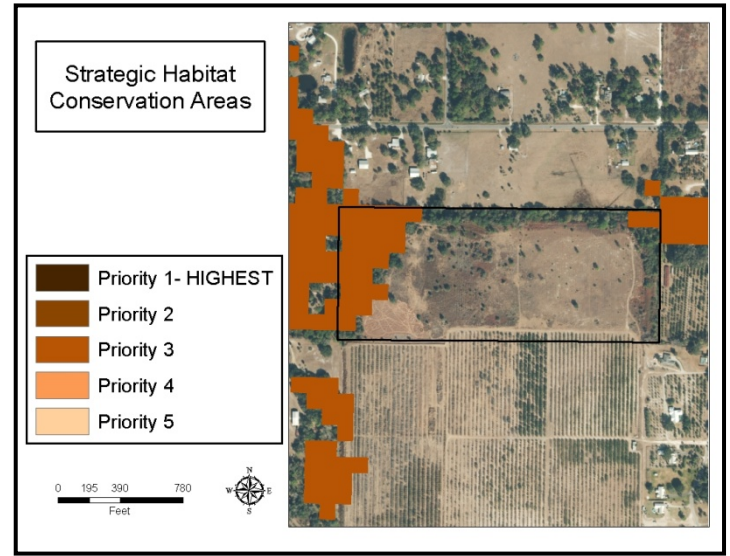
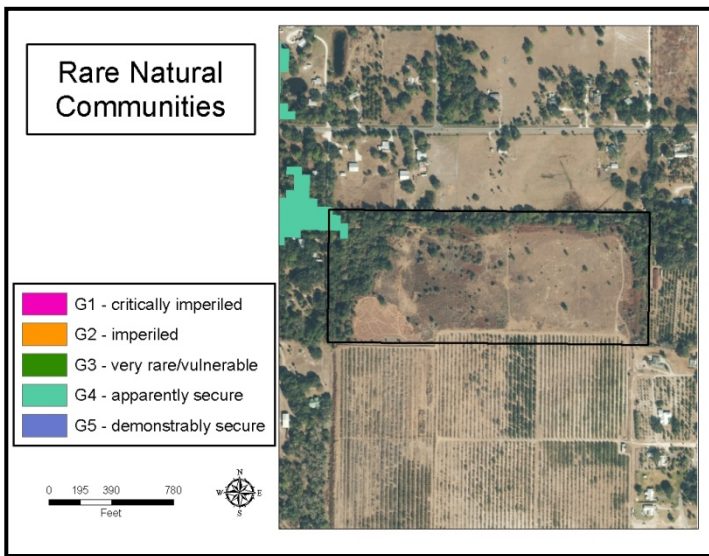
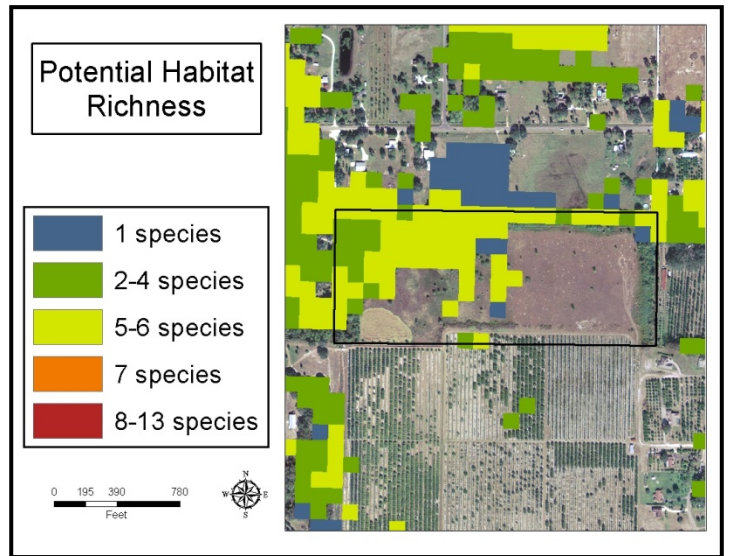
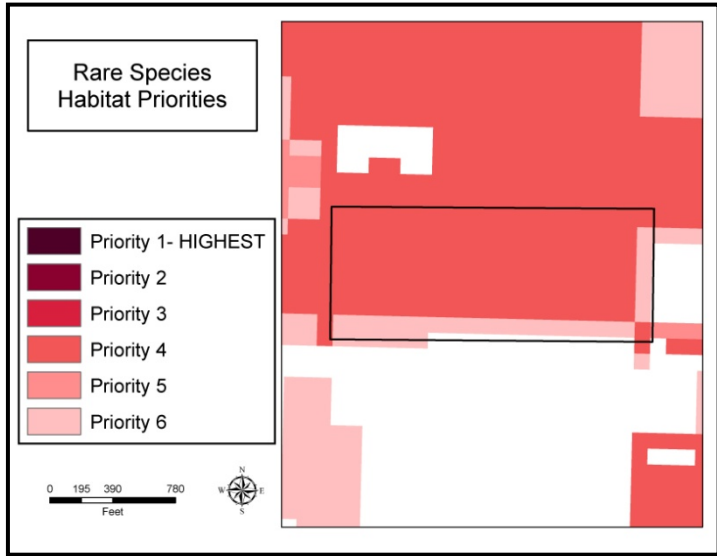
Robb Road: Land Character



IMPORTANT DISCLAIMER: All maps in this document are a conceptual or planning tool only. The South Florida Water Management District does not guarantee or make any representation regarding the information contained herein. It is not self-executing or binding, and does not affect the interests of any persons or properties, including any present or future right or use of real property.

For more information on the data layers used in the assessment, please refer to the Land Assessment Study Process and Methodology document available here: http://www.sfwmd.gov/portal/page/portal/xrepository/sfwmd_repository_pdf/land_assessment_study_process.pdf

Robb Road: Land Character (Continued)



IMPORTANT DISCLAIMER: All maps in this document are a conceptual or planning tool only. The South Florida Water Management District does not guarantee or make any representation regarding the information contained herein. It is not self-executing or binding, and does not affect the interests of any persons or properties, including any present or future right or use of real property.

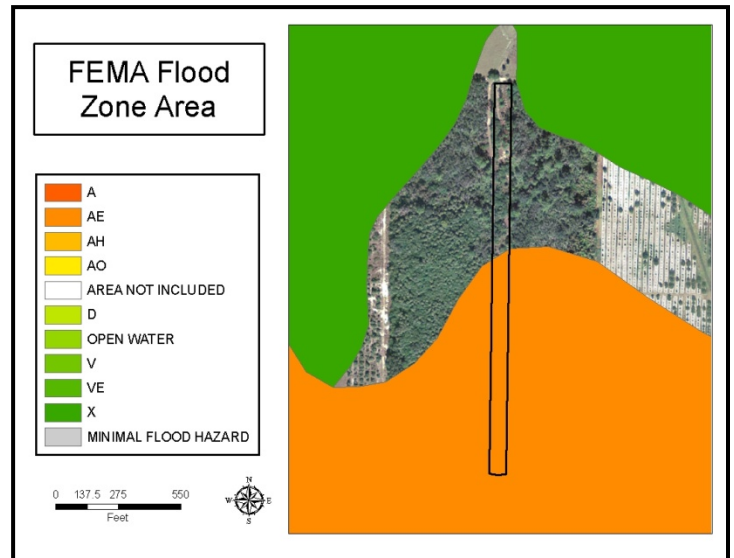
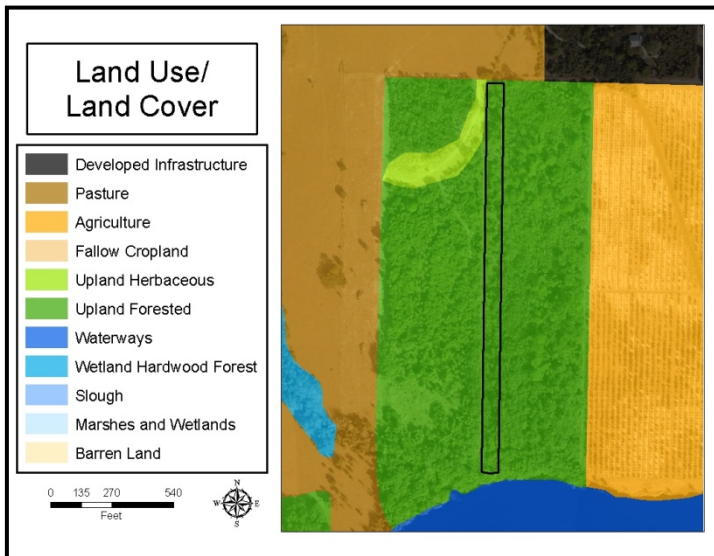
For more information on the data layers used in the assessment, please refer to the Land Assessment Study Process and Methodology document available here: http://www.sfwmd.gov/portal/page/portal/xrepository/sfwmd_repository_pdf/land_assessment_study_process.pdf

Spanish Creek Dr, Photo



The Spanish Creek Dr. Parcel, a 75-foot wide leading inland from the river. Looking west.

Spanish Creek Dr: Land Character

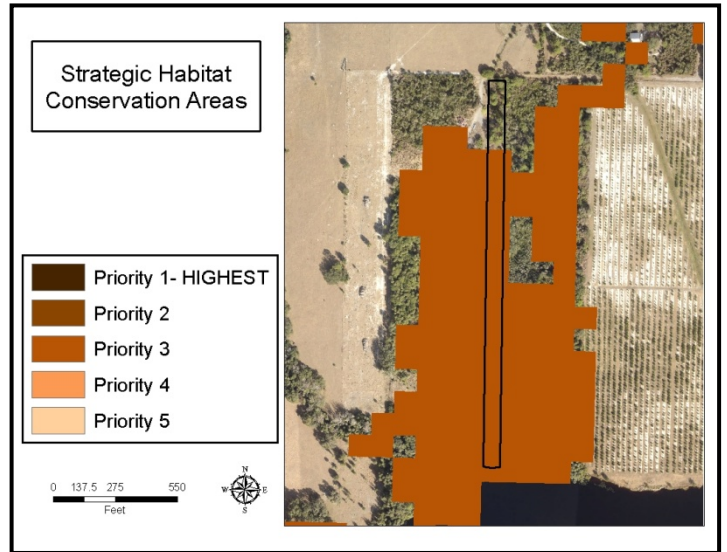
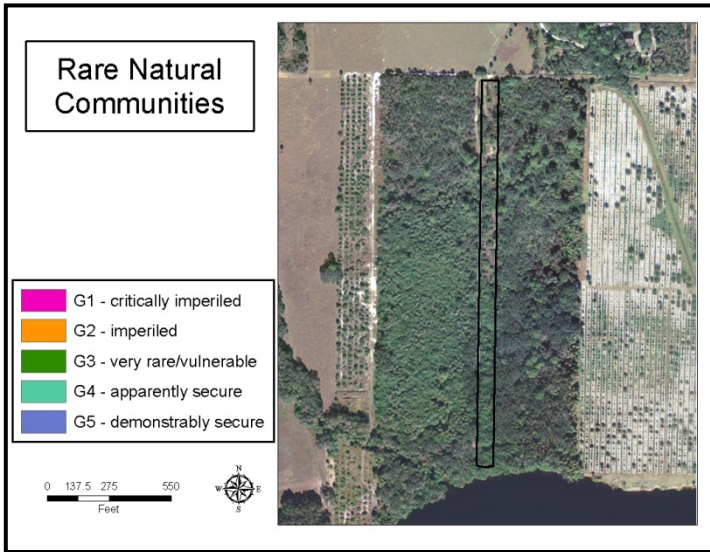
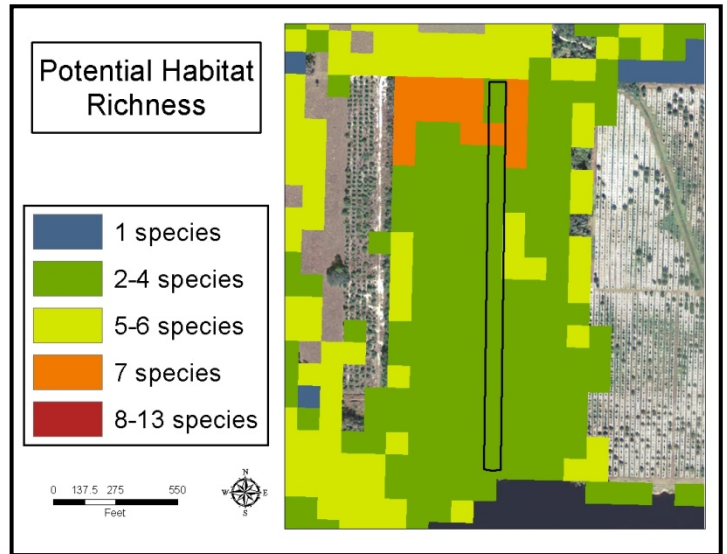
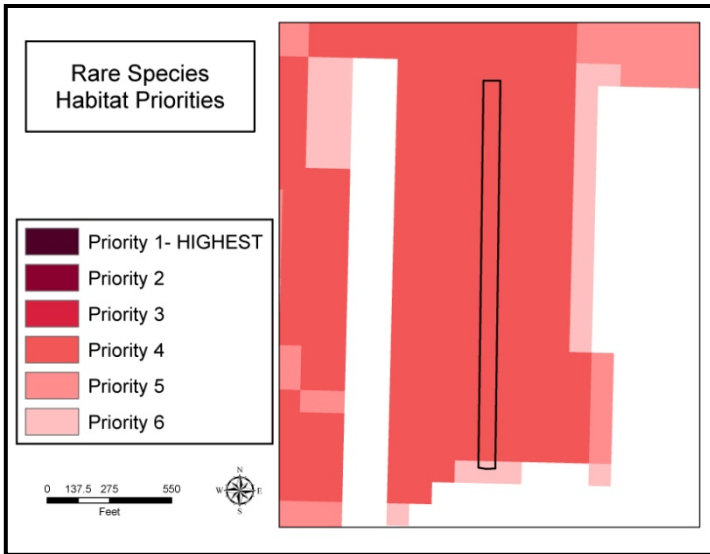


IMPORTANT DISCLAIMER: All maps in this document are a conceptual or planning tool only. The South Florida Water Management District does not guarantee or make any representation regarding the information contained herein. It is not self-executing or binding, and does not affect the interests of any persons or properties, including any present or future right or use of real property.

For more information on the data layers used in the assessment, please refer to the Land Assessment Study Process and Methodology document available here:

http://www.sfwmd.gov/portal/page/portal/xrepository/sfwmd_repository_pdf/land_assessment_study_process.pdf

Spanish Creek Dr: Land Character (Continued)



IMPORTANT DISCLAIMER: All maps in this document are a conceptual or planning tool only. The South Florida Water Management District does not guarantee or make any representation regarding the information contained herein. It is not self-executing or binding, and does not affect the interests of any persons or properties, including any present or future right or use of real property.

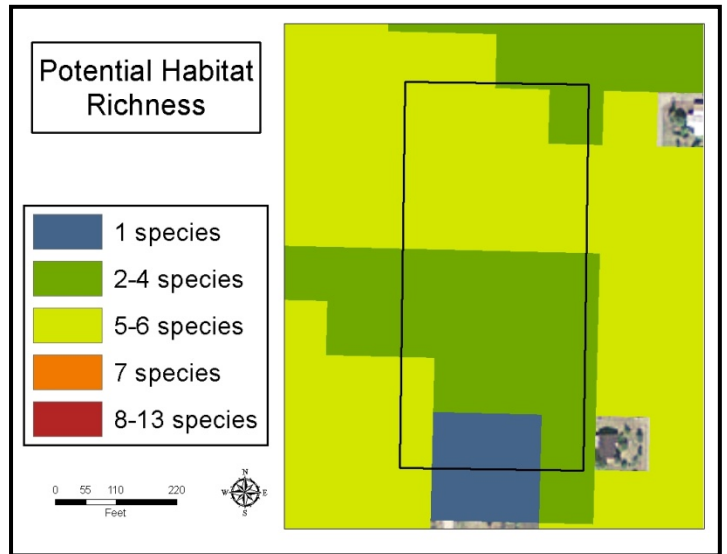
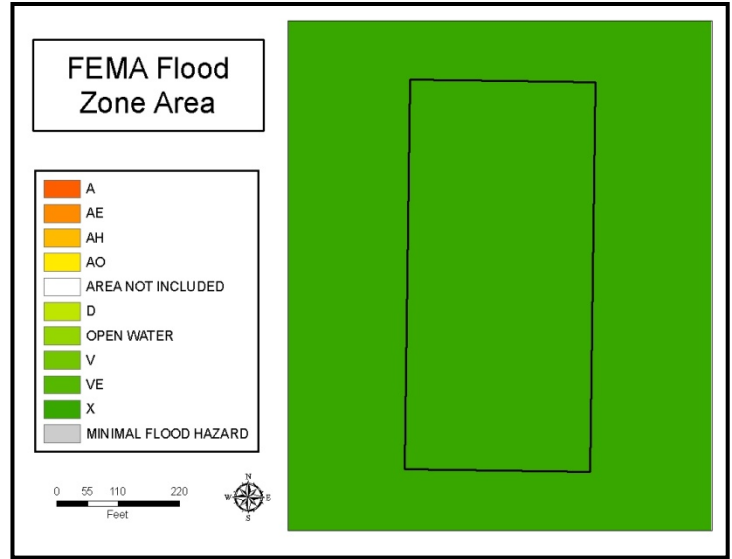
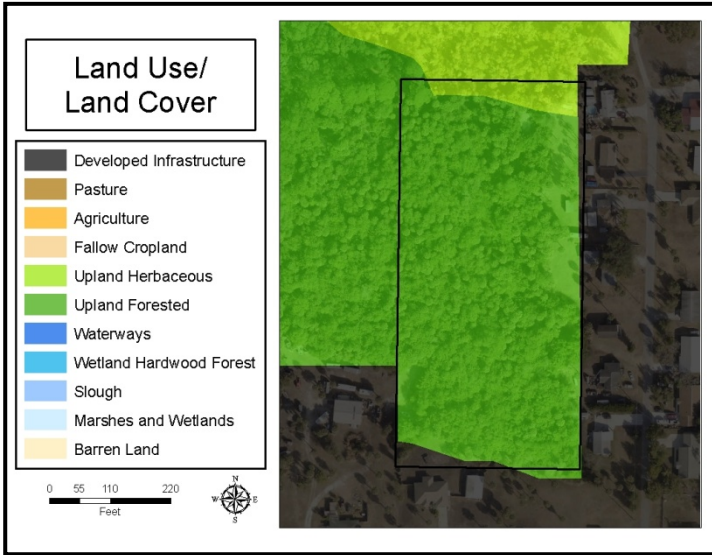
For more information on the data layers used in the assessment, please refer to the Land Assessment Study Process and Methodology document available here: http://www.sfwmd.gov/portal/page/portal/xrepository/sfwmd_repository_pdf/land_assessment_study_process.pdf

Center St, Photo



The Center St. Parcel, not actively managed

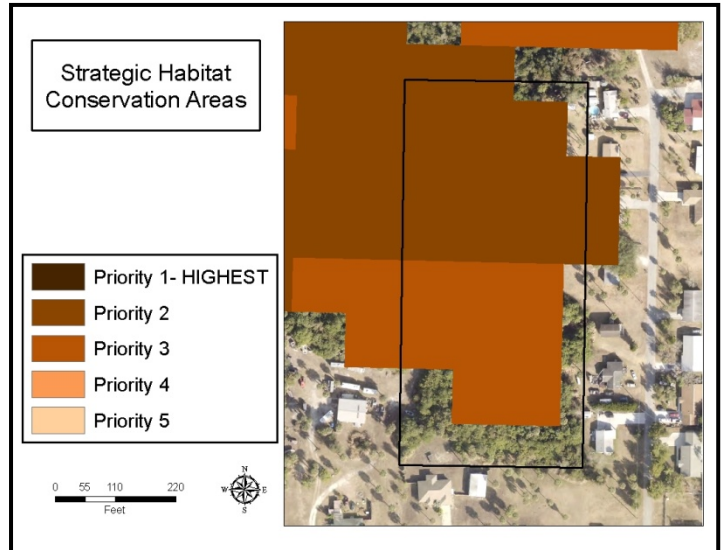
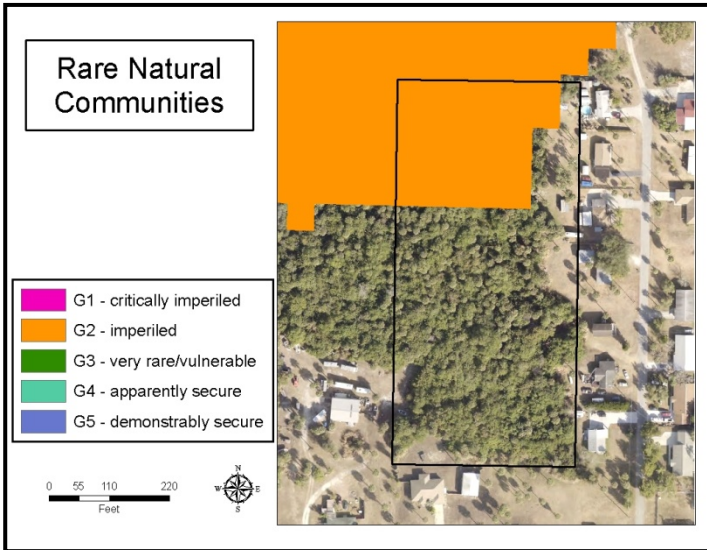
Center St: Land Character



IMPORTANT DISCLAIMER: All maps in this document are a conceptual or planning tool only. The South Florida Water Management District does not guarantee or make any representation regarding the information contained herein. It is not self-executing or binding, and does not affect the interests of any persons or properties, including any present or future right or use of real property.

For more information on the data layers used in the assessment, please refer to the Land Assessment Study Process and Methodology document available here: http://www.sfwmd.gov/portal/page/portal/xrepository/sfwmd_repository_pdf/land_assessment_study_process.pdf

Center St: Land Character (Continued)



IMPORTANT DISCLAIMER: All maps in this document are a conceptual or planning tool only. The South Florida Water Management District does not guarantee or make any representation regarding the information contained herein. It is not self-executing or binding, and does not affect the interests of any persons or properties, including any present or future right or use of real property.

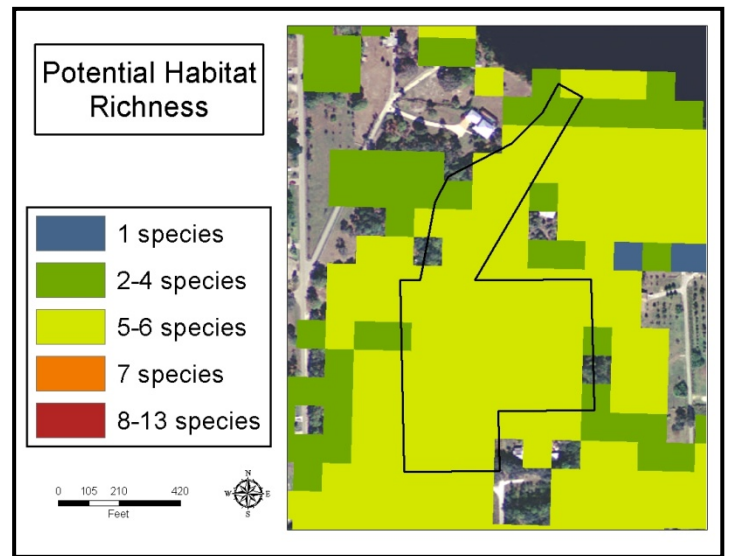
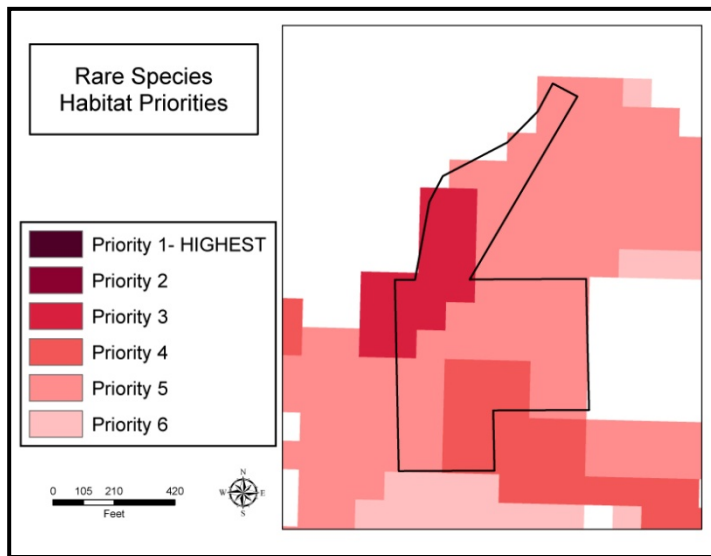
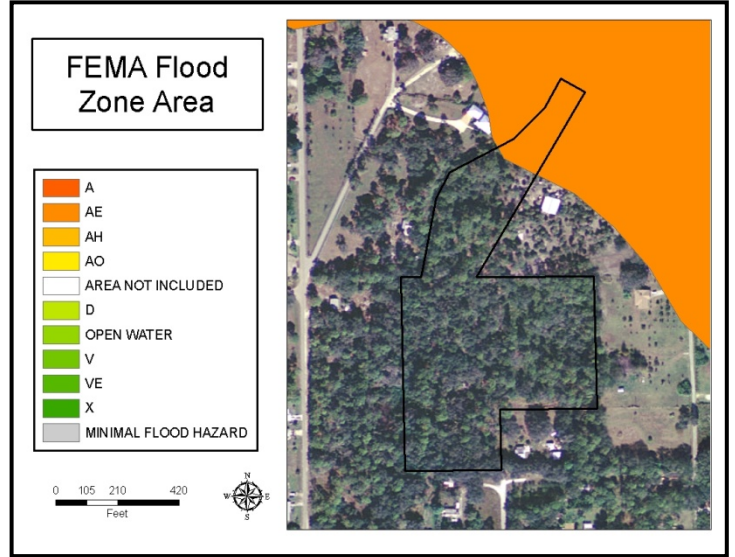
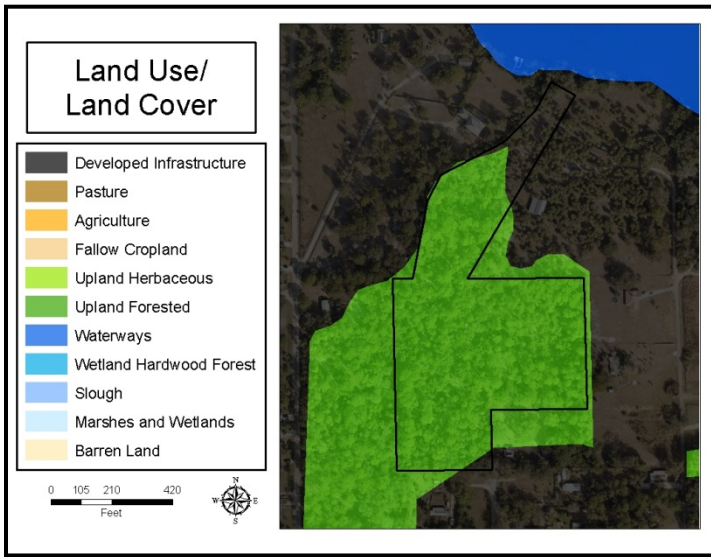
For more information on the data layers used in the assessment, please refer to the Land Assessment Study Process and Methodology document available here: http://www.sfwmd.gov/portal/page/portal/xrepository/sfwmd_repository_pdf/land_assessment_study_process.pdf

Lippincott Road, Photos



Lippincott Road Parcel, not actively managed

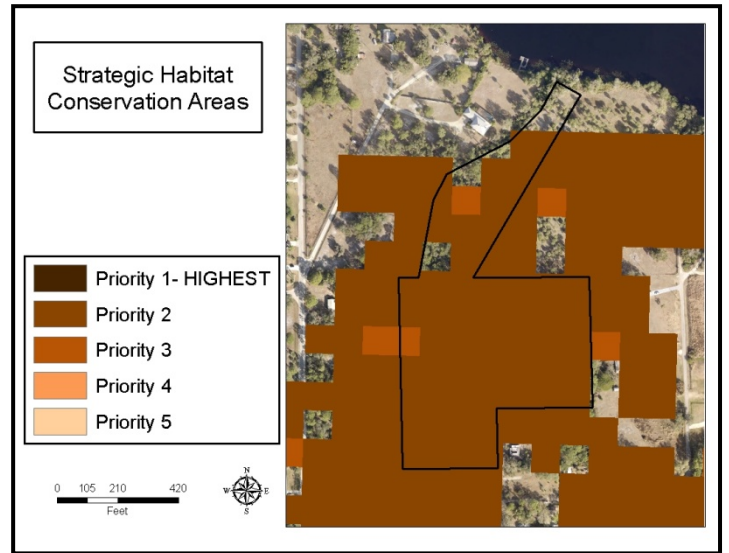
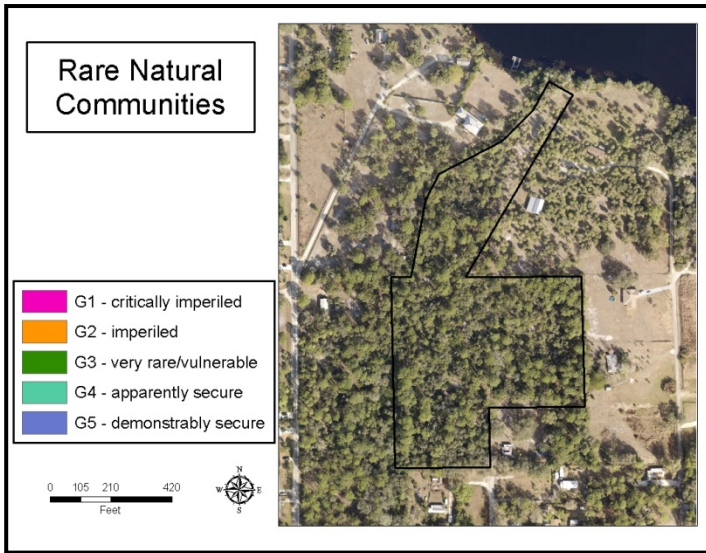
Lippincott Road: Land Character



IMPORTANT DISCLAIMER: All maps in this document are a conceptual or planning tool only. The South Florida Water Management District does not guarantee or make any representation regarding the information contained herein. It is not self-executing or binding, and does not affect the interests of any persons or properties, including any present or future right or use of real property.

For more information on the data layers used in the assessment, please refer to the Land Assessment Study Process and Methodology document available here: http://www.sfwmd.gov/portal/page/portal/xrepository/sfwmd_repository_pdf/land_assessment_study_process.pdf

Lippincott Road: Land Character (Continued)



IMPORTANT DISCLAIMER: All maps in this document are a conceptual or planning tool only. The South Florida Water Management District does not guarantee or make any representation regarding the information contained herein. It is not self-executing or binding, and does not affect the interests of any persons or properties, including any present or future right or use of real property.

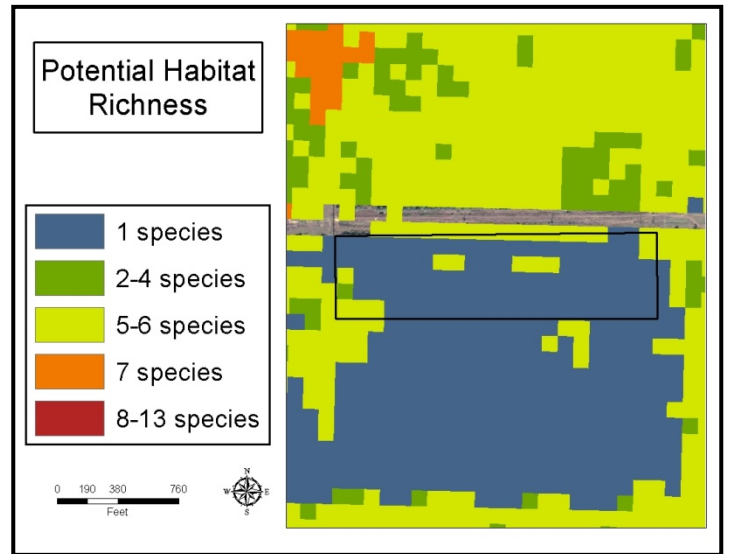
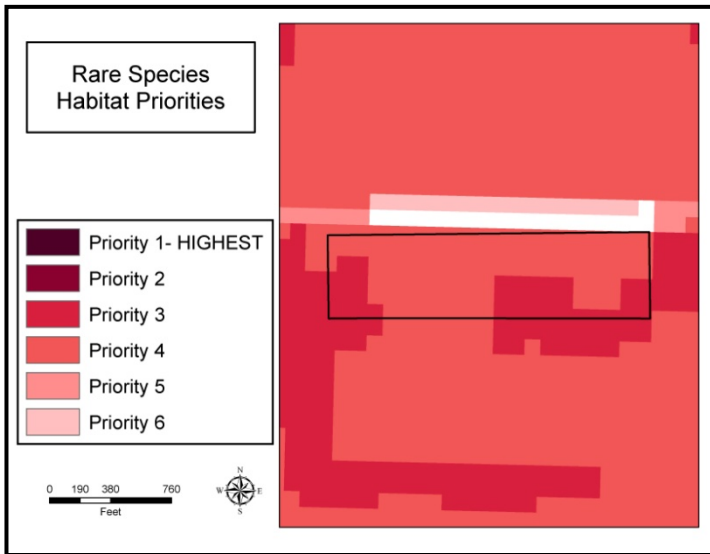
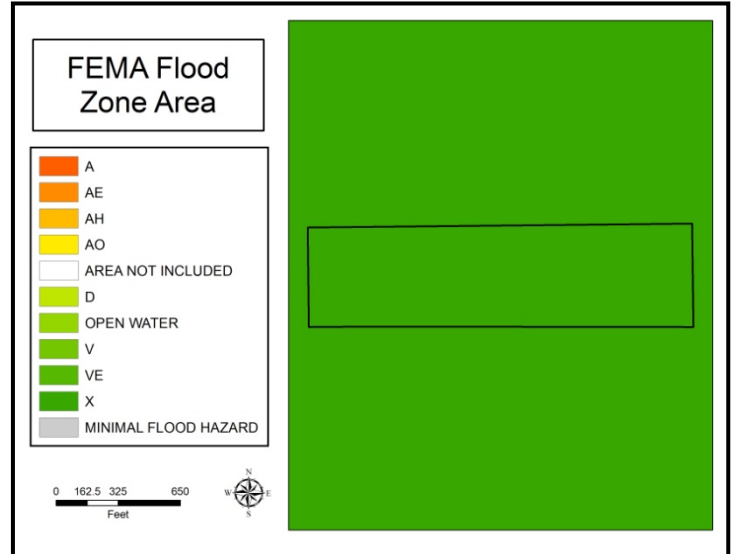
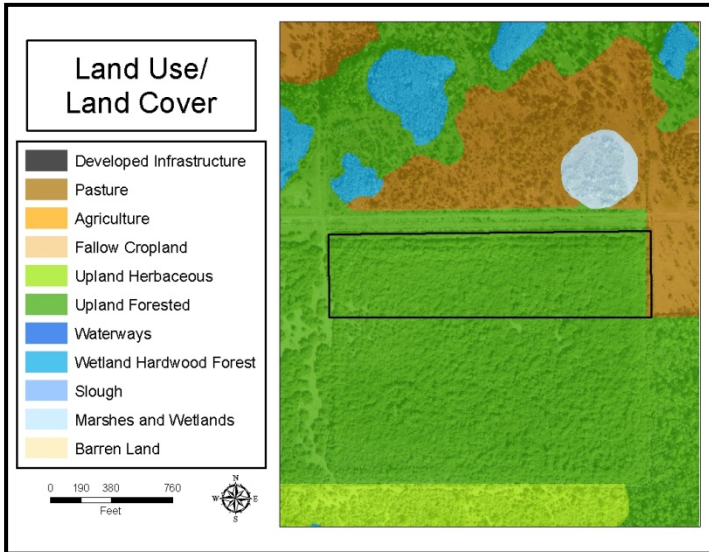
For more information on the data layers used in the assessment, please refer to the Land Assessment Study Process and Methodology document available here: http://www.sfwmd.gov/portal/page/portal/xrepository/sfwmd_repository_pdf/land_assessment_study_process.pdf

Goggin Road, Photo



The Goggin Road parcel, not actively managed.

Goggin Road: Land Character

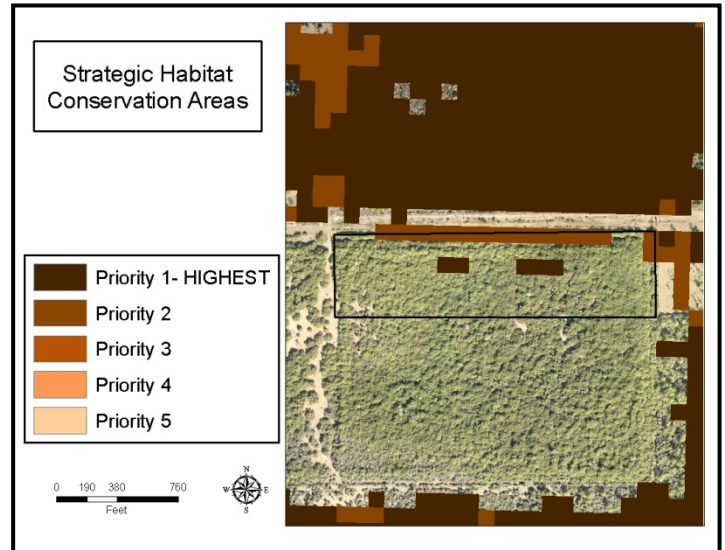
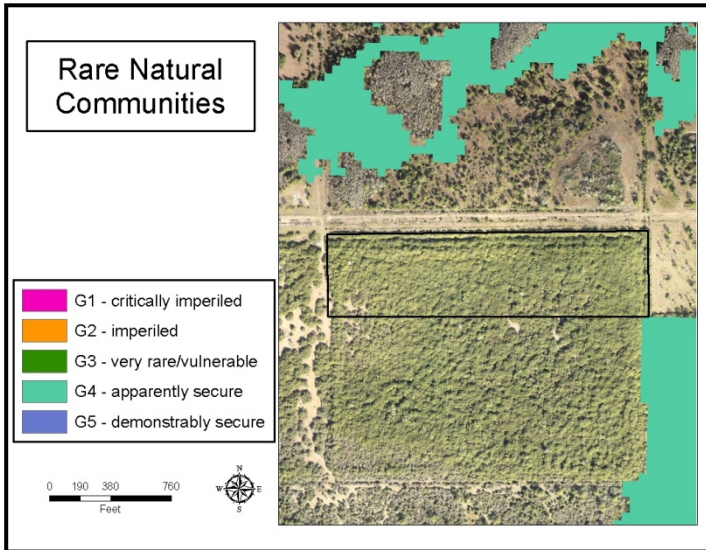


IMPORTANT DISCLAIMER: All maps in this document are a conceptual or planning tool only. The South Florida Water Management District does not guarantee or make any representation regarding the information contained herein. It is not self-executing or binding, and does not affect the interests of any persons or properties, including any present or future right or use of real property.

For more information on the data layers used in the assessment, please refer to the Land Assessment Study Process and Methodology document available here:

http://www.sfwmd.gov/portal/page/portal/xrepository/sfwmd_repository_pdf/land_assessment_study_process.pdf

Goggin Road: Land Character (Continued)



IMPORTANT DISCLAIMER: All maps in this document are a conceptual or planning tool only. The South Florida Water Management District does not guarantee or make any representation regarding the information contained herein. It is not self-executing or binding, and does not affect the interests of any persons or properties, including any present or future right or use of real property.

For more information on the data layers used in the assessment, please refer to the Land Assessment Study Process and Methodology document available here:

http://www.sfwmd.gov/portal/page/portal/xrepository/sfwmd_repository_pdf/land_assessment_study_process.pdf

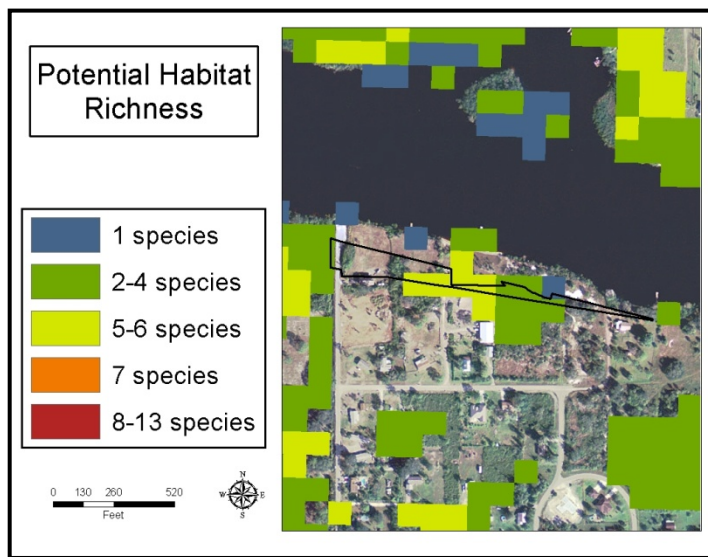
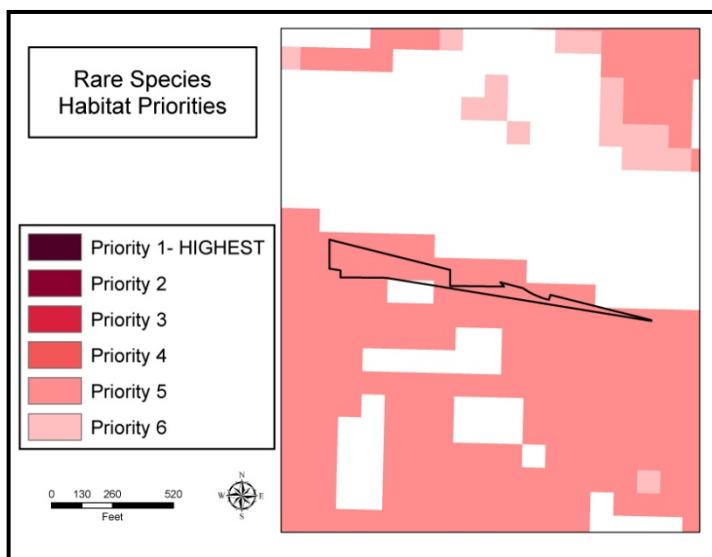
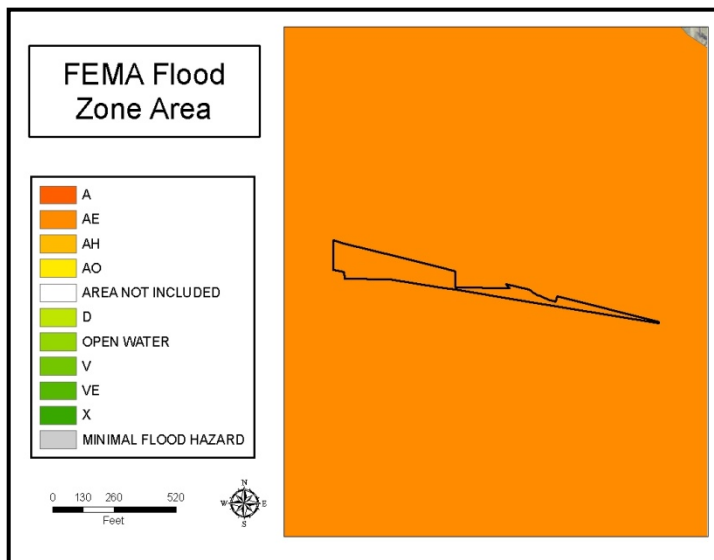
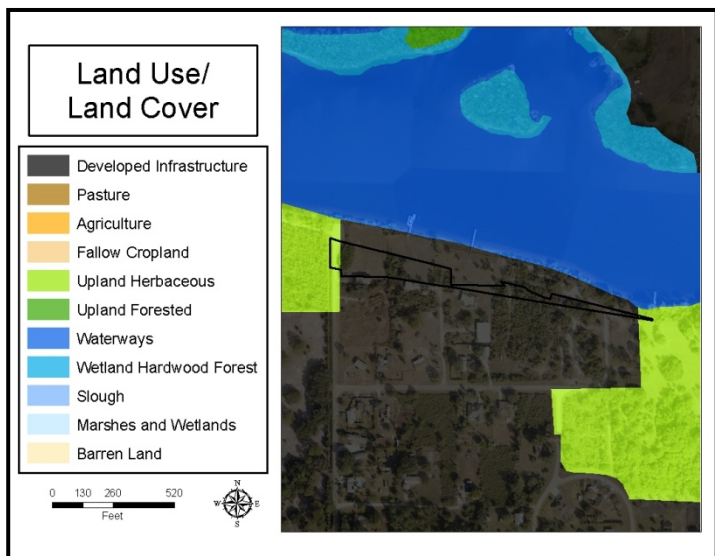
Linwood Rd, Photos



The Linwood Road parcel, not actively managed. West side (top), and east side (bottom).



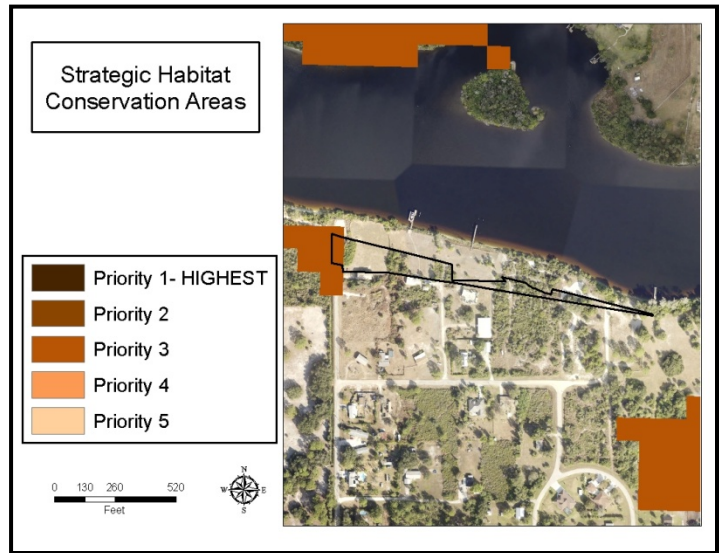
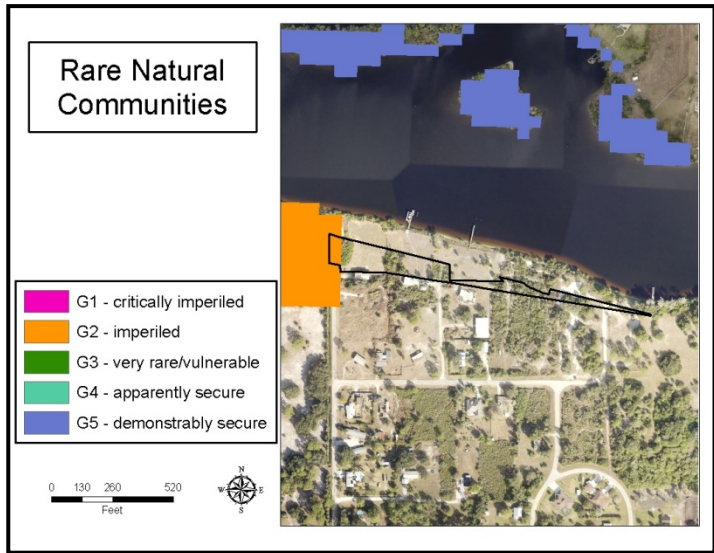
Linwood Rd: Land Character



IMPORTANT DISCLAIMER: All maps in this document are a conceptual or planning tool only. The South Florida Water Management District does not guarantee or make any representation regarding the information contained herein. It is not self-executing or binding, and does not affect the interests of any persons or properties, including any present or future right or use of real property.

For more information on the data layers used in the assessment, please refer to the Land Assessment Study Process and Methodology document available here:
http://www.sfwmd.gov/portal/page/portal/xrepository/sfwmd_repository_pdf/land_assessment_study_process.pdf

Linwood Rd: Land Character (Continued)



IMPORTANT DISCLAIMER: All maps in this document are a conceptual or planning tool only. The South Florida Water Management District does not guarantee or make any representation regarding the information contained herein. It is not self-executing or binding, and does not affect the interests of any persons or properties, including any present or future right or use of real property.

For more information on the data layers used in the assessment, please refer to the Land Assessment Study Process and Methodology document available here:

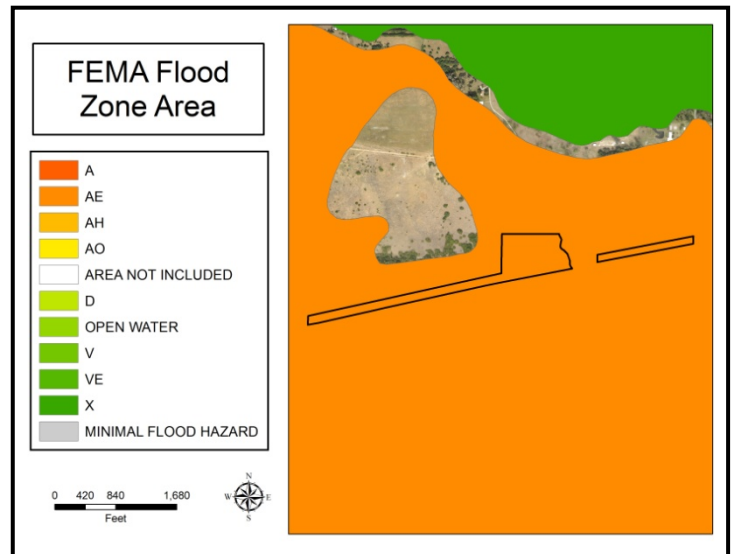
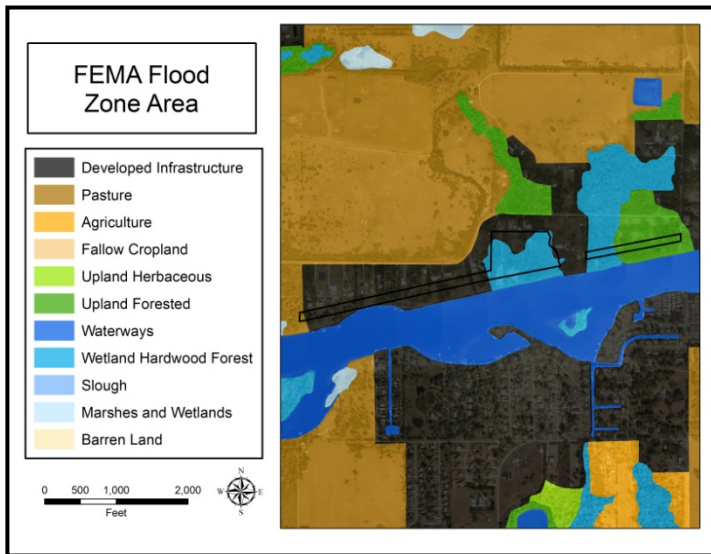
http://www.sfwmd.gov/portal/page/portal/xrepository/sfwmd_repository_pdf/land_assessment_study_process.pdf

Duke Hwy, Photo



The Duke Hwy parcel, not actively managed

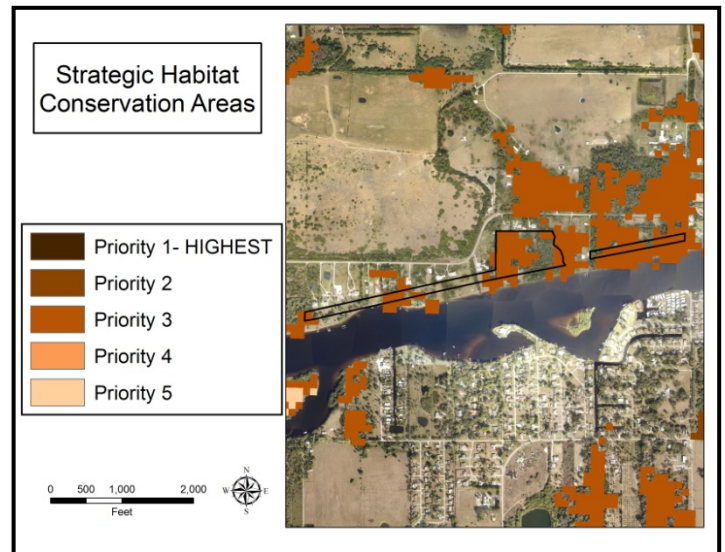
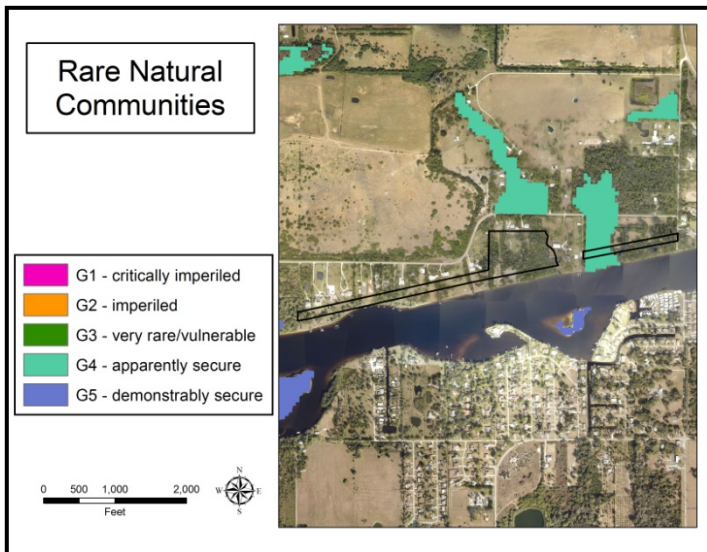
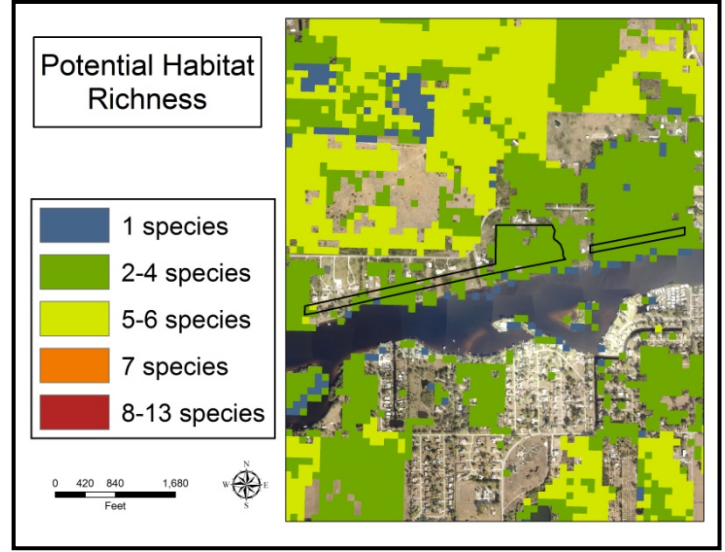
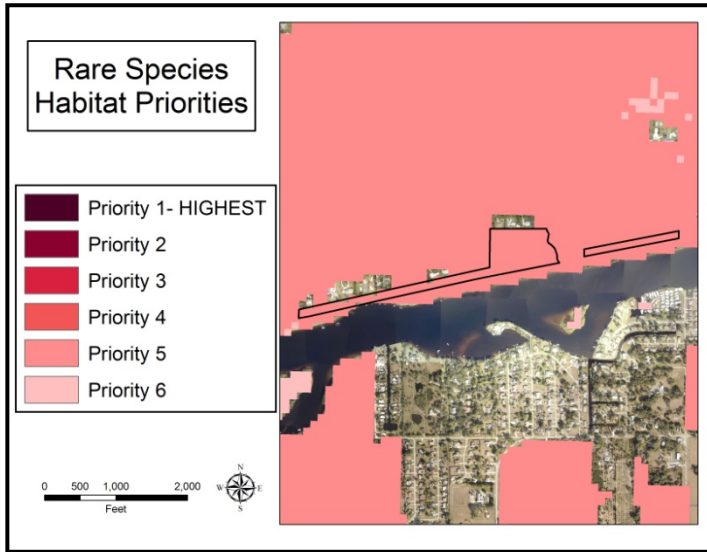
Duke Hwy: Land Character



IMPORTANT DISCLAIMER: All maps in this document are a conceptual or planning tool only. The South Florida Water Management District does not guarantee or make any representation regarding the information contained herein. It is not self-executing or binding, and does not affect the interests of any persons or properties, including any present or future right or use of real property.

For more information on the data layers used in the assessment, please refer to the Land Assessment Study Process and Methodology document available here: http://www.sfwmd.gov/portal/page/portal/xrepository/sfwmd_repository_pdf/land_assessment_study_process.pdf

Duke Hwy: Land Character (Continued)



IMPORTANT DISCLAIMER: All maps in this document are a conceptual or planning tool only. The South Florida Water Management District does not guarantee or make any representation regarding the information contained herein. It is not self-executing or binding, and does not affect the interests of any persons or properties, including any present or future right or use of real property.

For more information on the data layers used in the assessment, please refer to the Land Assessment Study Process and Methodology document available here: http://www.sfwmd.gov/portal/page/portal/xrepository/sfwmd_repository_pdf/land_assessment_study_process.pdf

**Havens Island and Trout Creek Peninsula,
Photos**

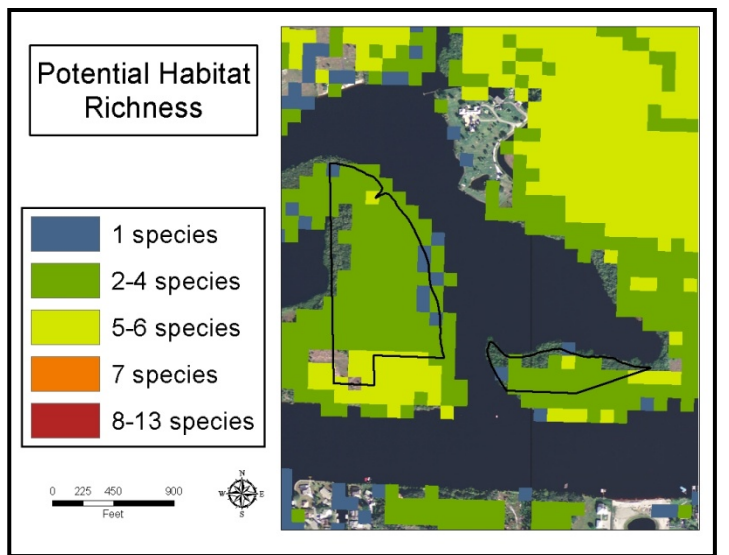
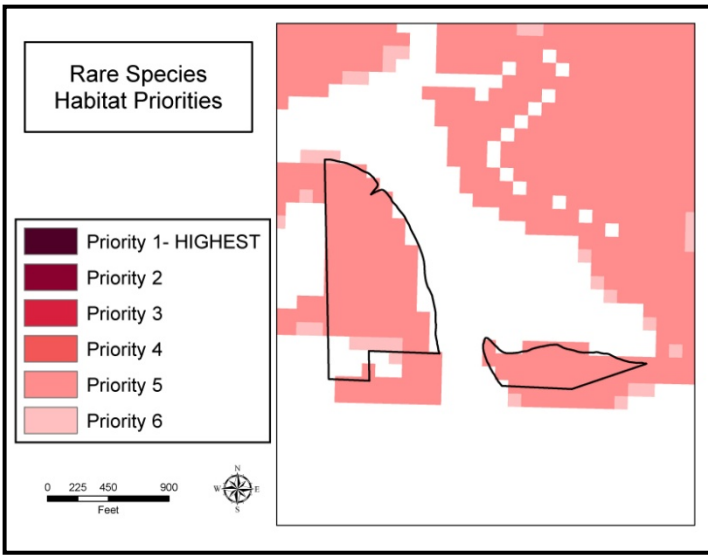
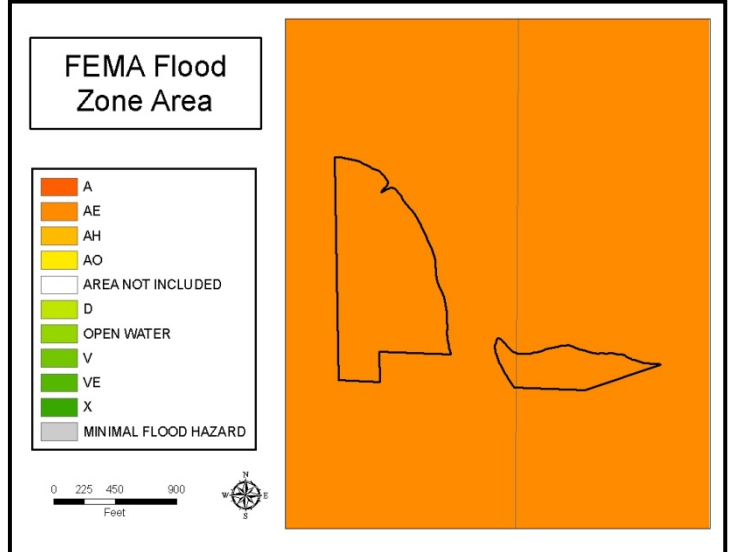
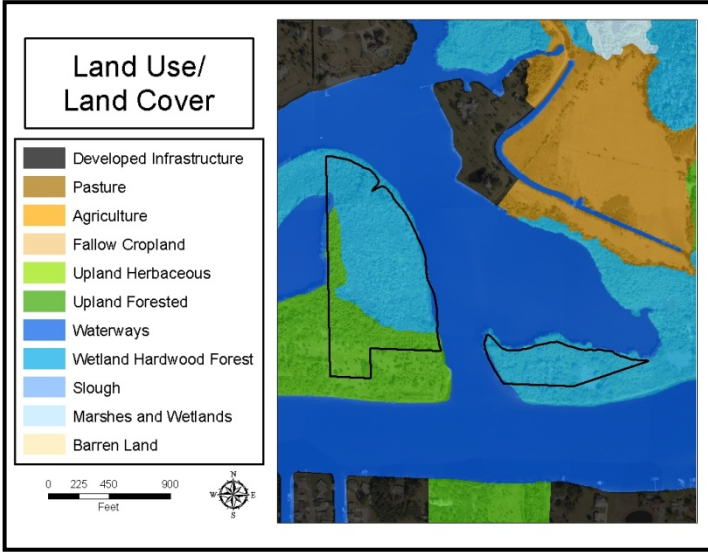


Havens Island parcel, not actively managed



Trout Creek Peninsula, not actively managed

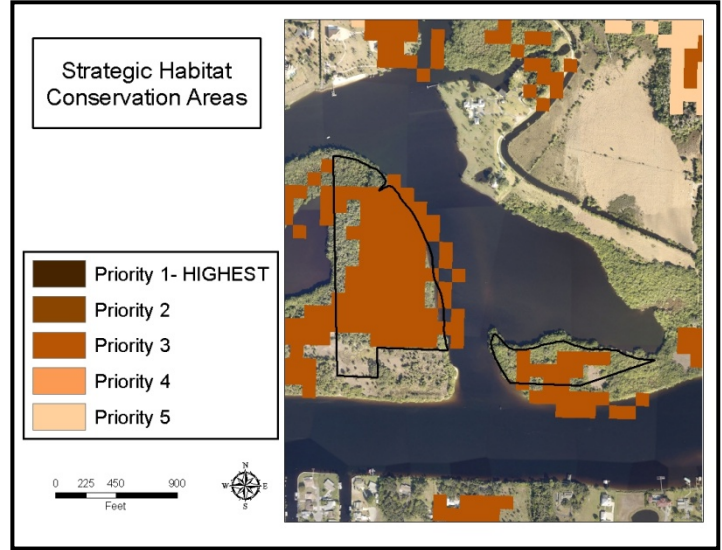
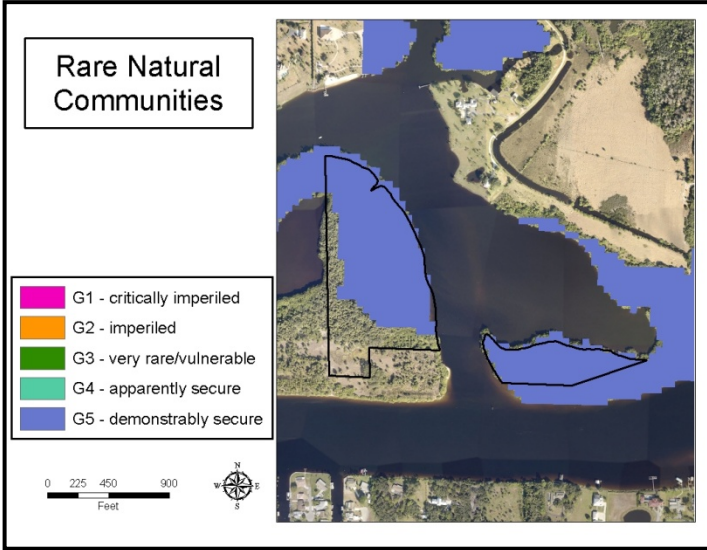
Havens Island and Trout Creek Peninsula: Land Character



IMPORTANT DISCLAIMER: All maps in this document are a conceptual or planning tool only. The South Florida Water Management District does not guarantee or make any representation regarding the information contained herein. It is not self-executing or binding, and does not affect the interests of any persons or properties, including any present or future right or use of real property.

For more information on the data layers used in the assessment, please refer to the Land Assessment Study Process and Methodology document available here: http://www.sfwmd.gov/portal/page/portal/xrepository/sfwmd_repository_pdf/land_assessment_study_process.pdf

**Havens Island and Trout Creek Peninsula:
Land Character (Continued)**



IMPORTANT DISCLAIMER: All maps in this document are a conceptual or planning tool only. The South Florida Water Management District does not guarantee or make any representation regarding the information contained herein. It is not self-executing or binding, and does not affect the interests of any persons or properties, including any present or future right or use of real property.

For more information on the data layers used in the assessment, please refer to the Land Assessment Study Process and Methodology document available here:

http://www.sfwmd.gov/portal/page/portal/xrepository/sfwmd_repository_pdf/land_assessment_study_process.pdf

I-75 Parcel, Photos

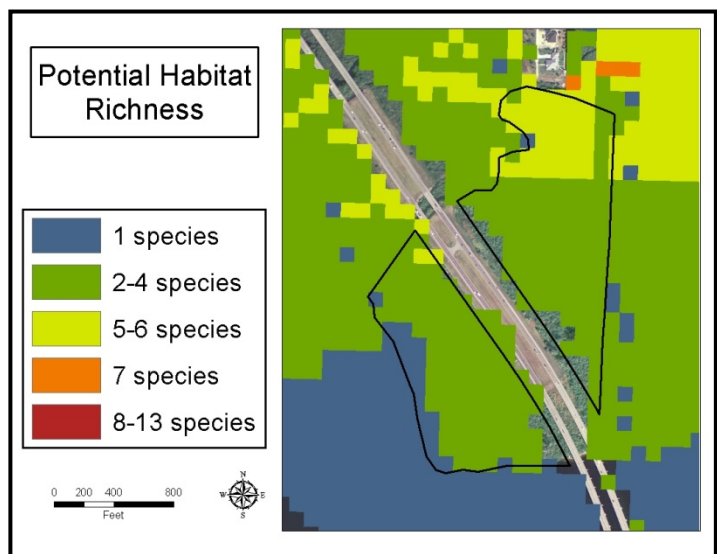
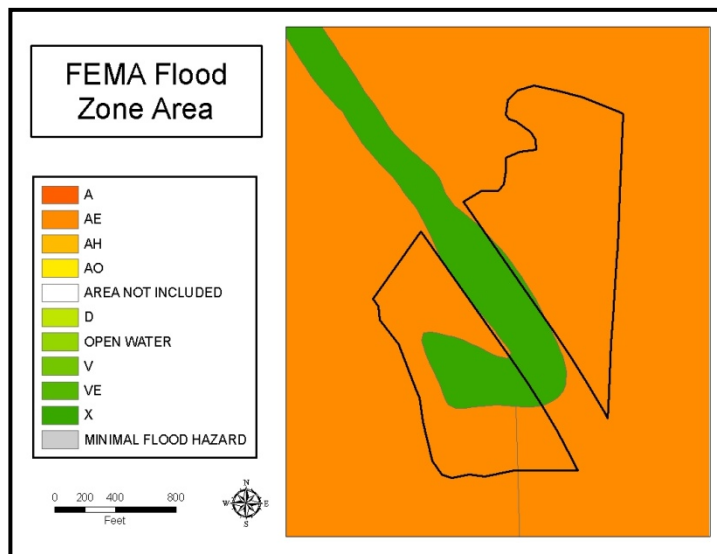
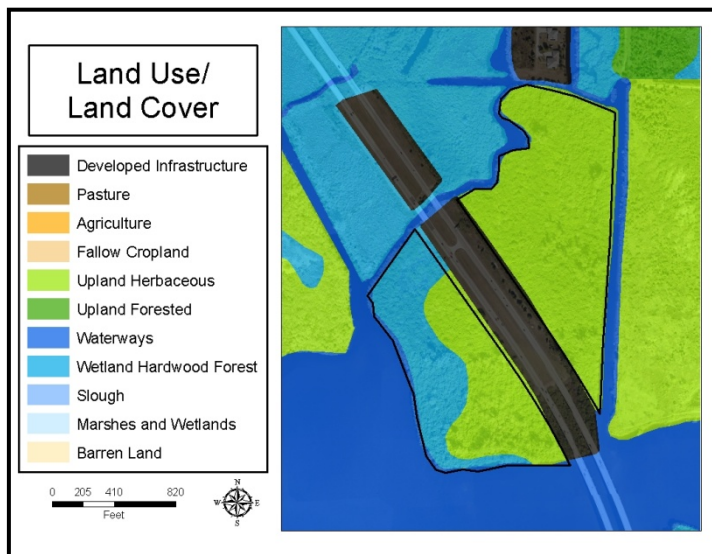


East of I-75, this site contains primarily exotic species



West of I-75

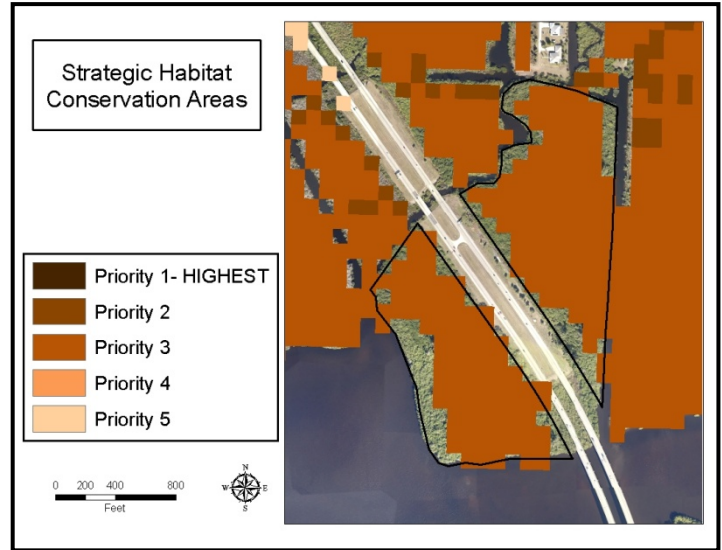
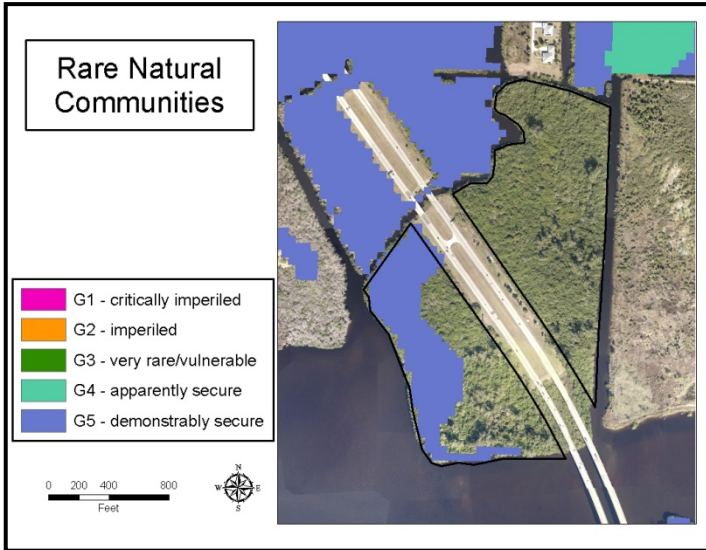
I-75 Parcel: Land Character



IMPORTANT DISCLAIMER: All maps in this document are a conceptual or planning tool only. The South Florida Water Management District does not guarantee or make any representation regarding the information contained herein. It is not self-executing or binding, and does not affect the interests of any persons or properties, including any present or future right or use of real property.

For more information on the data layers used in the assessment, please refer to the Land Assessment Study Process and Methodology document available here: http://www.sfwmd.gov/portal/page/portal/xrepository/sfwmd_repository_pdf/land_assessment_study_process.pdf

I-75 Parcel: Land Character (Continued)



IMPORTANT DISCLAIMER: All maps in this document are a conceptual or planning tool only. The South Florida Water Management District does not guarantee or make any representation regarding the information contained herein. It is not self-executing or binding, and does not affect the interests of any persons or properties, including any present or future right or use of real property.

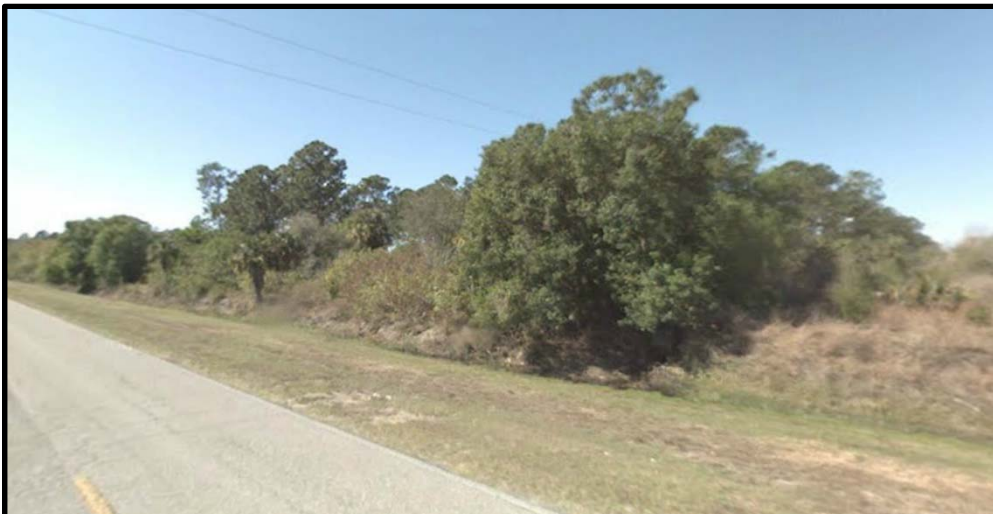
For more information on the data layers used in the assessment, please refer to the Land Assessment Study Process and Methodology document available here:

http://www.sfwmd.gov/portal/page/portal/xrepository/sfwmd_repository_pdf/land_assessment_study_process.pdf

Kirby Thompson Rd, Photos

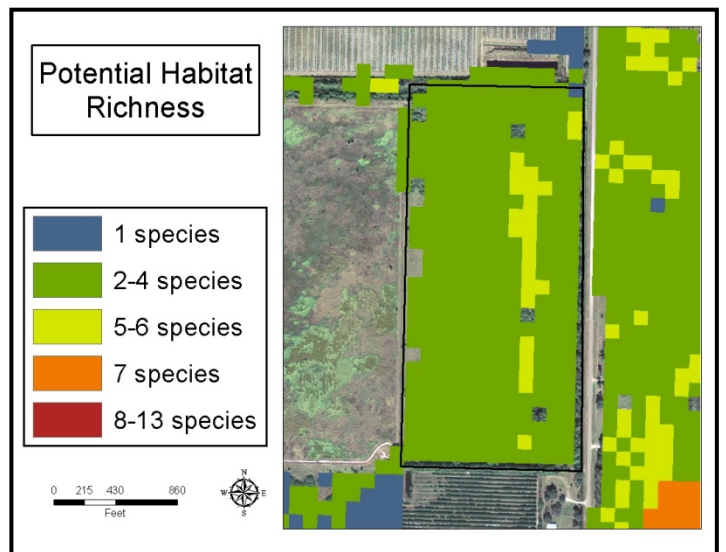
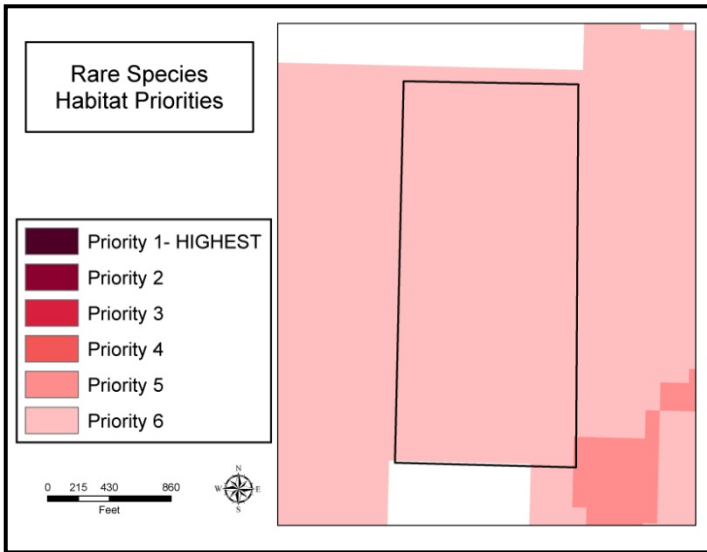
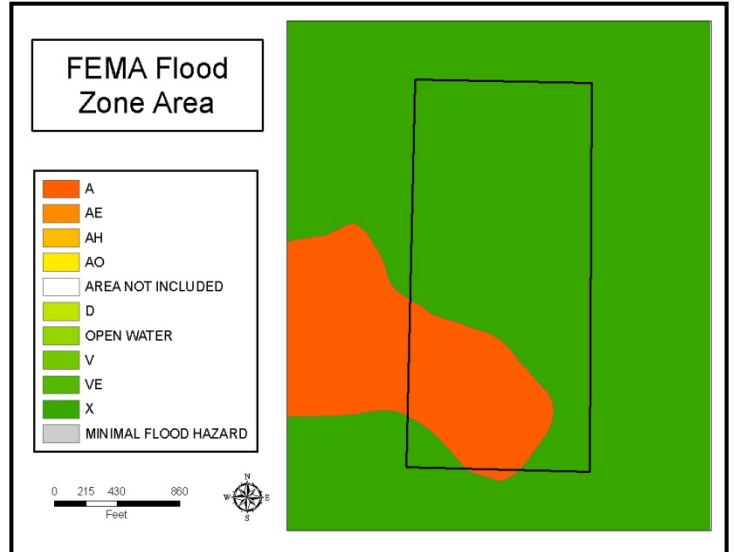
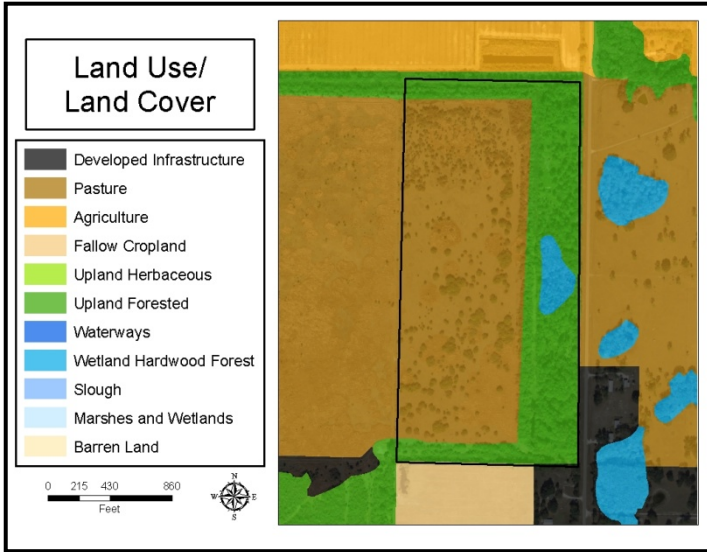


This parcel is an open field with a small strip of pines and oaks that lie between a drainage ditch and Hwy 78.



The strip of pines, oaks, and exotics on the east end of the lot.

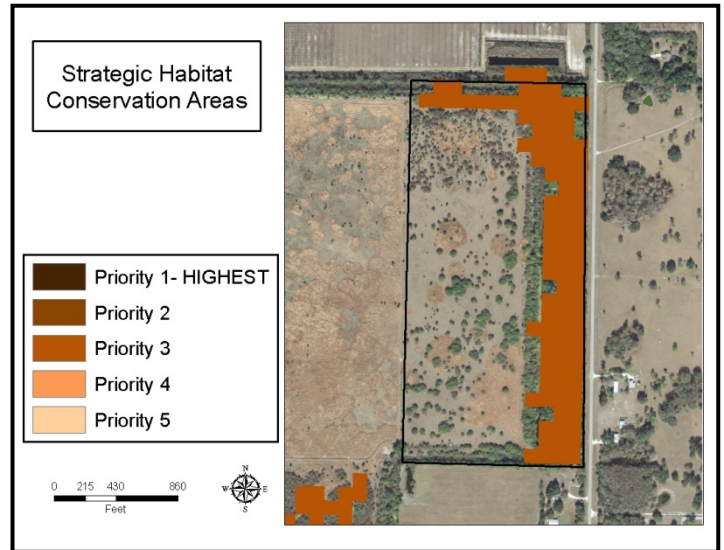
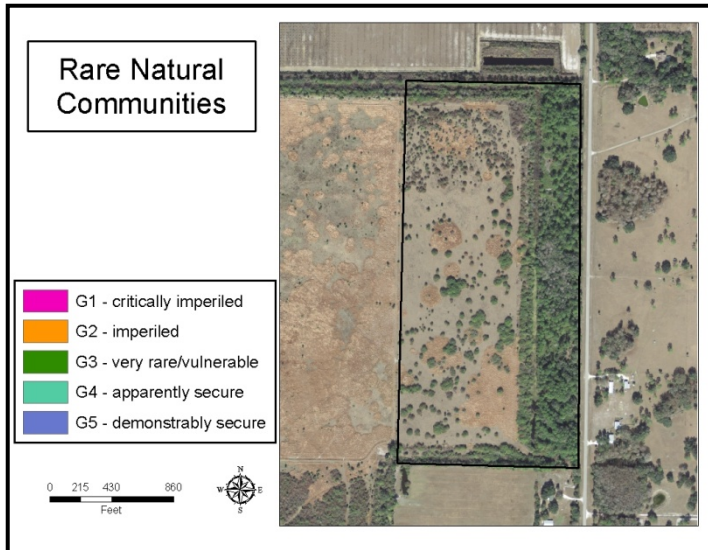
Kirby Thompson Rd: Land Character



IMPORTANT DISCLAIMER: All maps in this document are a conceptual or planning tool only. The South Florida Water Management District does not guarantee or make any representation regarding the information contained herein. It is not self-executing or binding, and does not affect the interests of any persons or properties, including any present or future right or use of real property.

For more information on the data layers used in the assessment, please refer to the Land Assessment Study Process and Methodology document available here:
http://www.sfwmd.gov/portal/page/portal/xrepository/sfwmd_repository_pdf/land_assessment_study_process.pdf

**Kirby Thompson Rd: Land Character
(Continued)**



IMPORTANT DISCLAIMER: All maps in this document are a conceptual or planning tool only. The South Florida Water Management District does not guarantee or make any representation regarding the information contained herein. It is not self-executing or binding, and does not affect the interests of any persons or properties, including any present or future right or use of real property.

For more information on the data layers used in the assessment, please refer to the Land Assessment Study Process and Methodology document available here:

http://www.sfwmd.gov/portal/page/portal/xrepository/sfwmd_repository_pdf/land_assessment_study_process.pdf

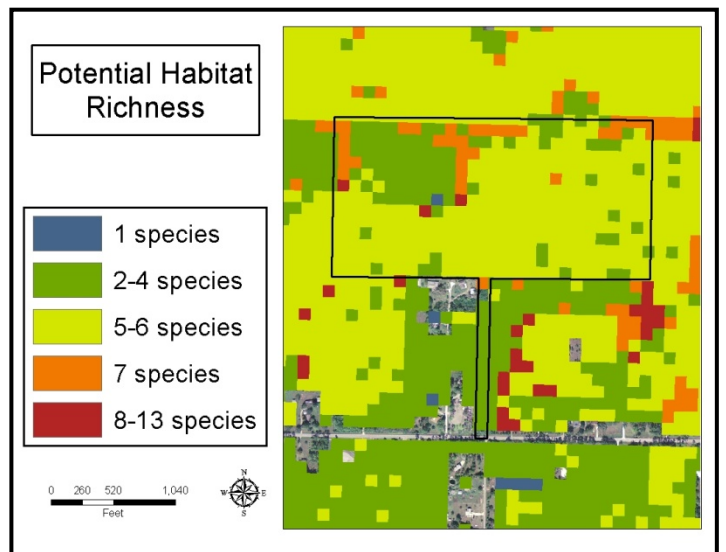
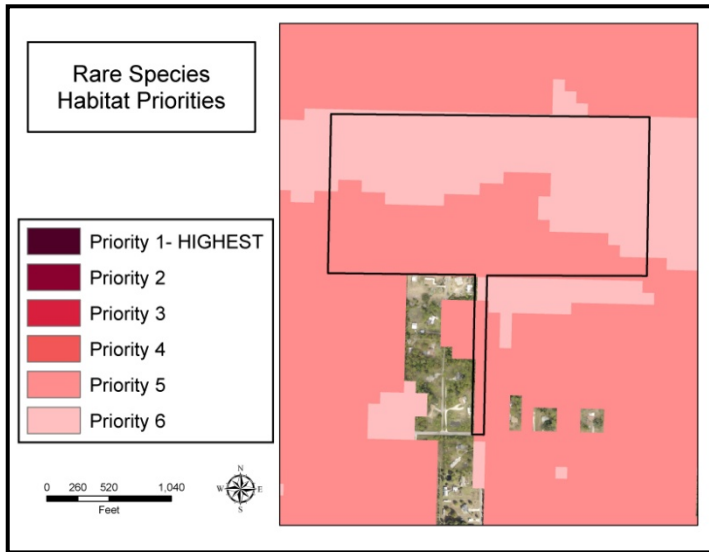
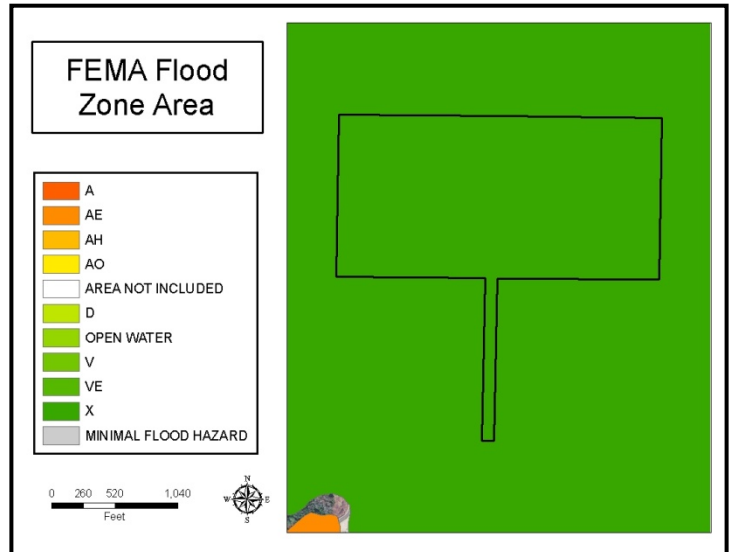
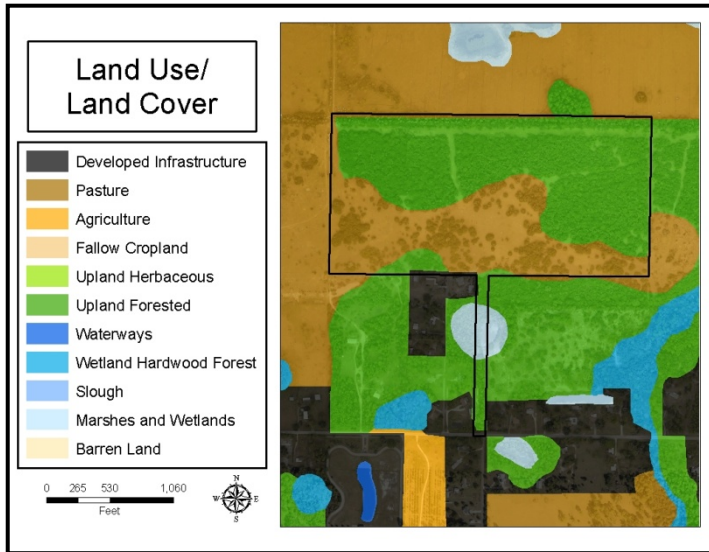
Lyndhurst Ln, Photos



This property contains open fields, Brazilian pepper, and cabbage palms



Lyndhurst Ln: Land Character

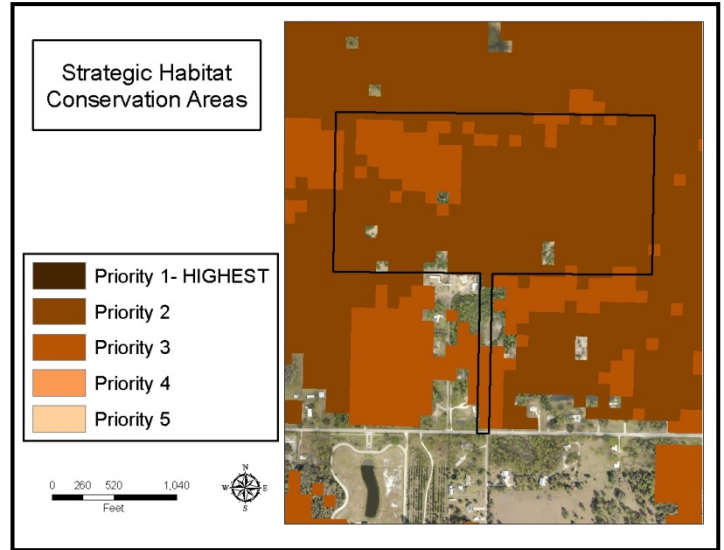
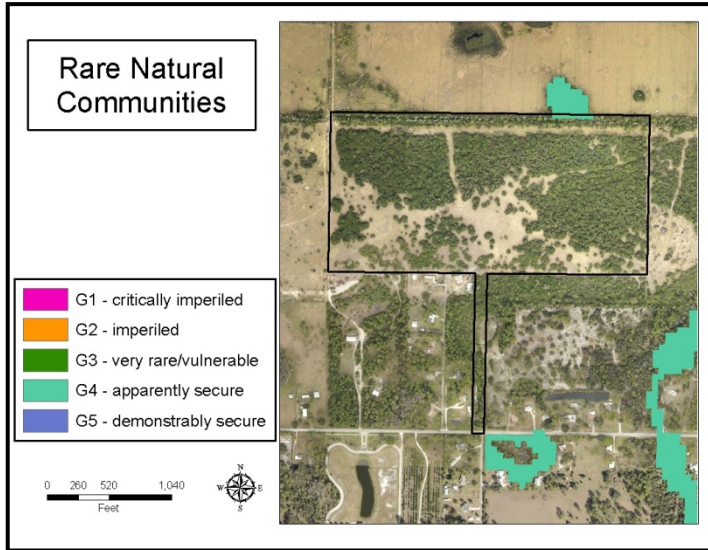


IMPORTANT DISCLAIMER: All maps in this document are a conceptual or planning tool only. The South Florida Water Management District does not guarantee or make any representation regarding the information contained herein. It is not self-executing or binding, and does not affect the interests of any persons or properties, including any present or future right or use of real property.

For more information on the data layers used in the assessment, please refer to the Land Assessment Study Process and Methodology document available here:

http://www.sfwmd.gov/portal/page/portal/xrepository/sfwmd_repository_pdf/land_assessment_study_process.pdf

Lyndhurst Ln: Land Character (Continued)



IMPORTANT DISCLAIMER: All maps in this document are a conceptual or planning tool only. The South Florida Water Management District does not guarantee or make any representation regarding the information contained herein. It is not self-executing or binding, and does not affect the interests of any persons or properties, including any present or future right or use of real property.

For more information on the data layers used in the assessment, please refer to the Land Assessment Study Process and Methodology document available here: http://www.sfwmd.gov/portal/page/portal/xrepository/sfwmd_repository_pdf/land_assessment_study_process.pdf

Caloosa Shores Dr, Photos

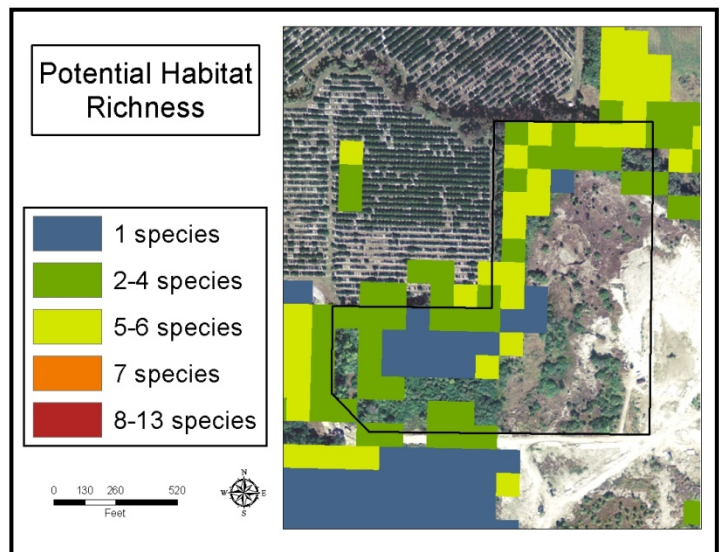
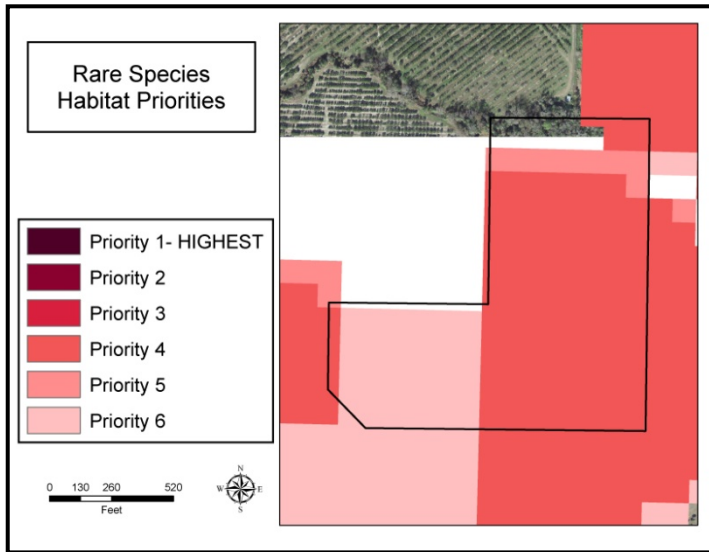
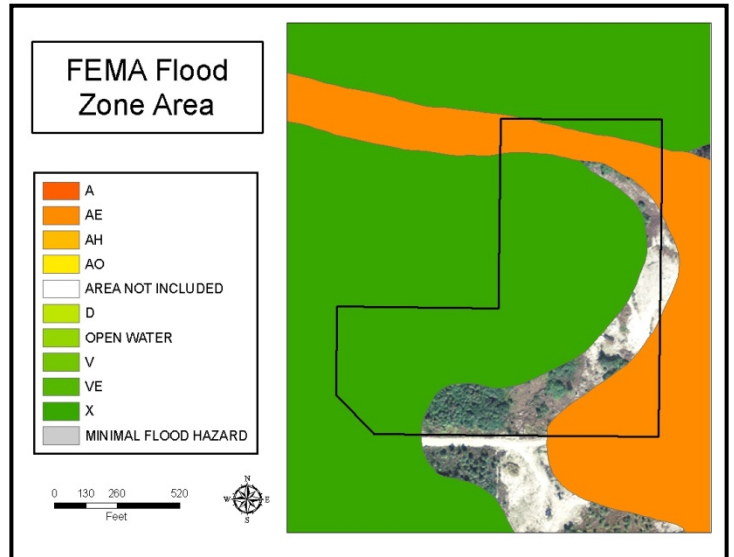
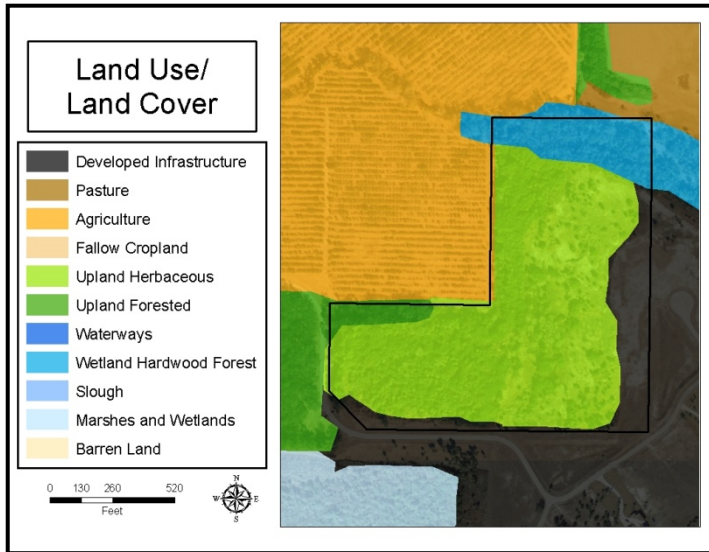


The southern portion of the site, primarily Brazilian pepper and cabbage palms



The little creek that runs through the northeast corner

Caloosa Shores Dr: Land Character

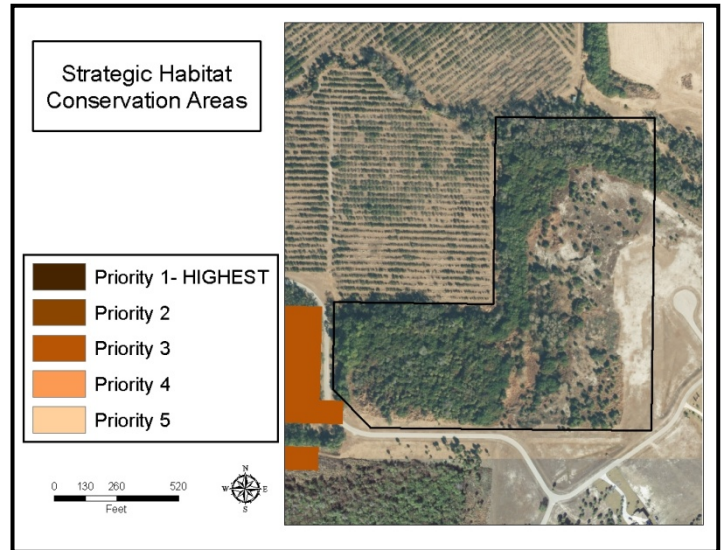
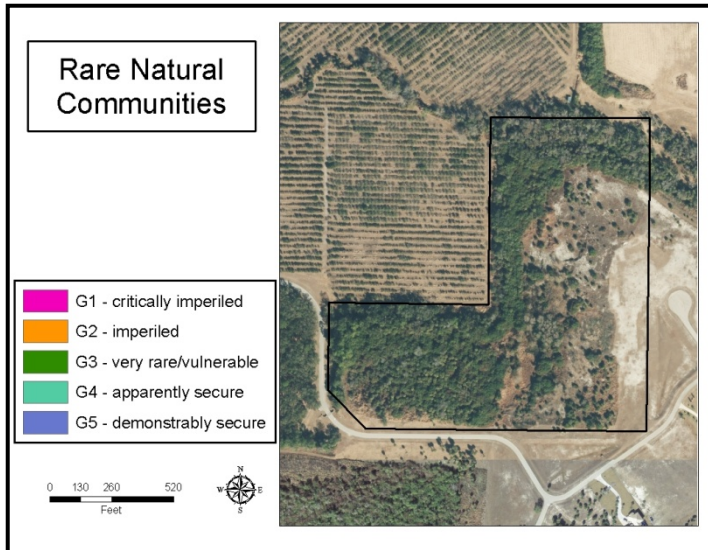


IMPORTANT DISCLAIMER: All maps in this document are a conceptual or planning tool only. The South Florida Water Management District does not guarantee or make any representation regarding the information contained herein. It is not self-executing or binding, and does not affect the interests of any persons or properties, including any present or future right or use of real property.

For more information on the data layers used in the assessment, please refer to the Land Assessment Study Process and Methodology document available here:

http://www.sfwmd.gov/portal/page/portal/xrepository/sfwmd_repository_pdf/land_assessment_study_process.pdf

**Caloosa Shores Dr: Land Character
(Continued)**



IMPORTANT DISCLAIMER: All maps in this document are a conceptual or planning tool only. The South Florida Water Management District does not guarantee or make any representation regarding the information contained herein. It is not self-executing or binding, and does not affect the interests of any persons or properties, including any present or future right or use of real property.

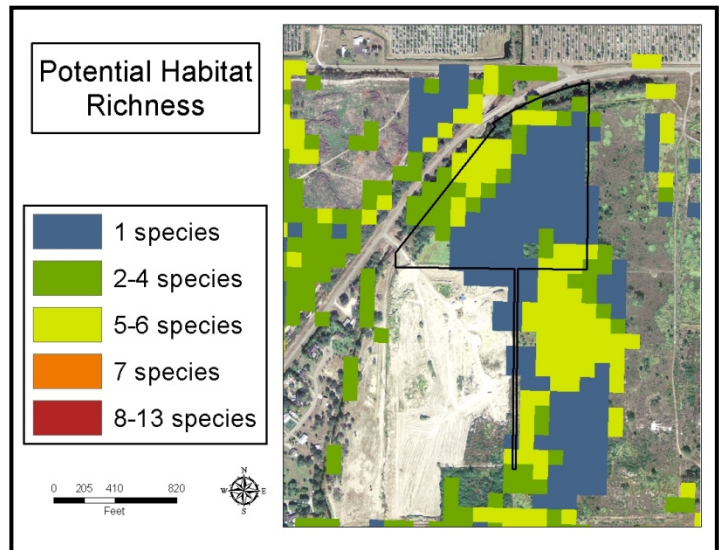
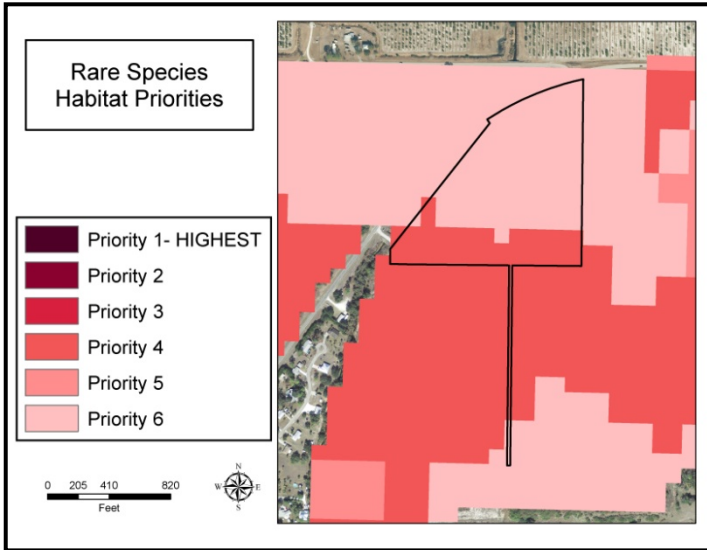
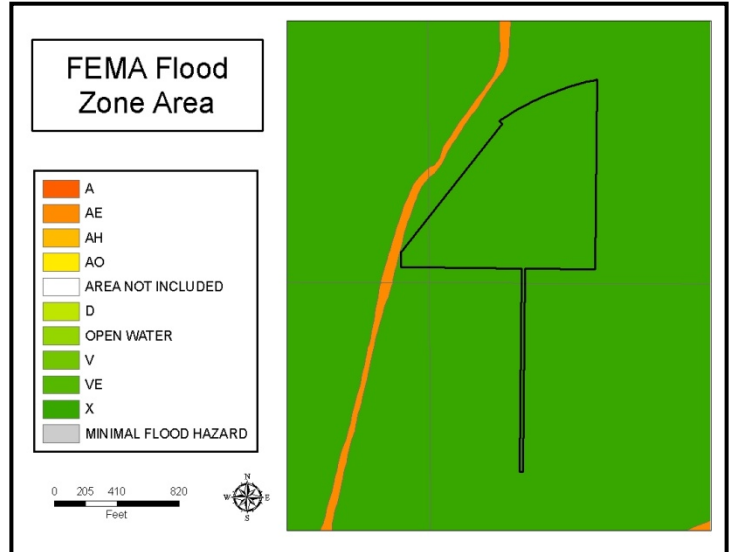
For more information on the data layers used in the assessment, please refer to the Land Assessment Study Process and Methodology document available here: http://www.sfwmd.gov/portal/page/portal/xrepository/sfwmd_repository_pdf/land_assessment_study_process.pdf

Quail Run, Photos



The site is predominantly Brazilian pepper, with some native oaks and pine trees along the road frontage

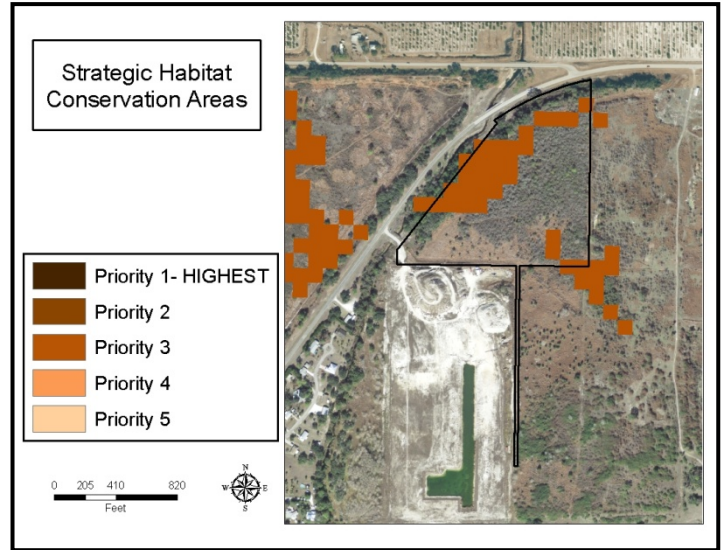
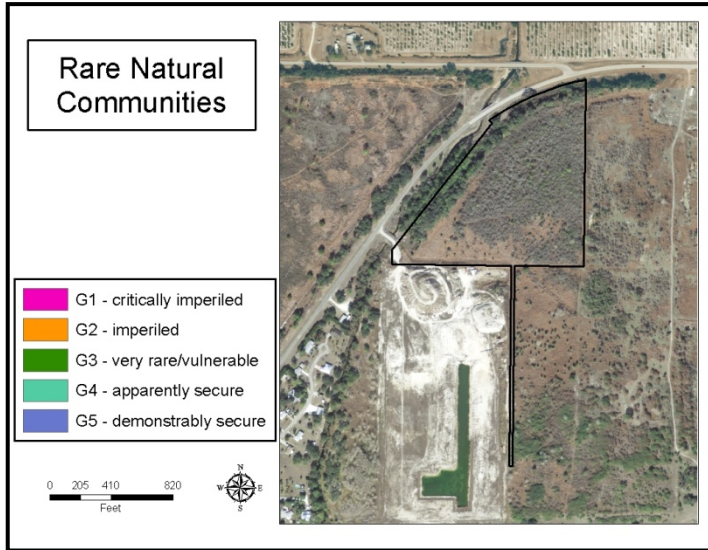
Quail Run: Land Character



IMPORTANT DISCLAIMER: All maps in this document are a conceptual or planning tool only. The South Florida Water Management District does not guarantee or make any representation regarding the information contained herein. It is not self-executing or binding, and does not affect the interests of any persons or properties, including any present or future right or use of real property.

For more information on the data layers used in the assessment, please refer to the Land Assessment Study Process and Methodology document available here: http://www.sfwmd.gov/portal/page/portal/xrepository/sfwmd_repository_pdf/land_assessment_study_process.pdf

Quail Run: Land Character (Continued)



IMPORTANT DISCLAIMER: All maps in this document are a conceptual or planning tool only. The South Florida Water Management District does not guarantee or make any representation regarding the information contained herein. It is not self-executing or binding, and does not affect the interests of any persons or properties, including any present or future right or use of real property.

For more information on the data layers used in the assessment, please refer to the Land Assessment Study Process and Methodology document available here: http://www.sfwmd.gov/portal/page/portal/xrepository/sfwmd_repository_pdf/land_assessment_study_process.pdf

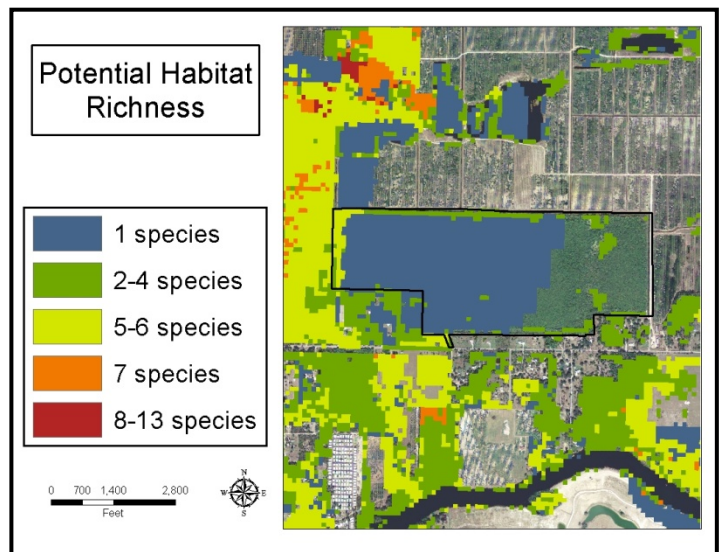
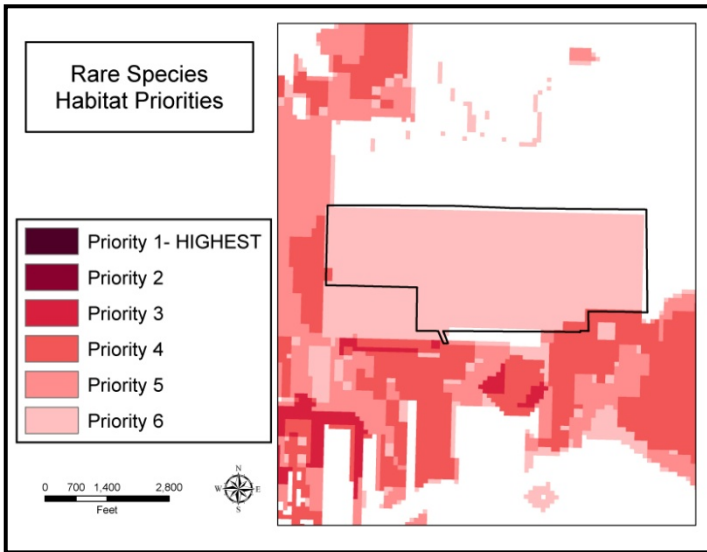
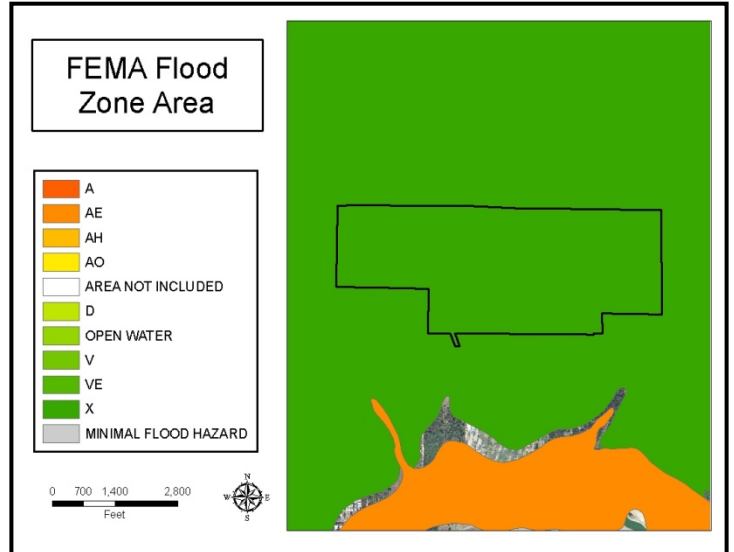
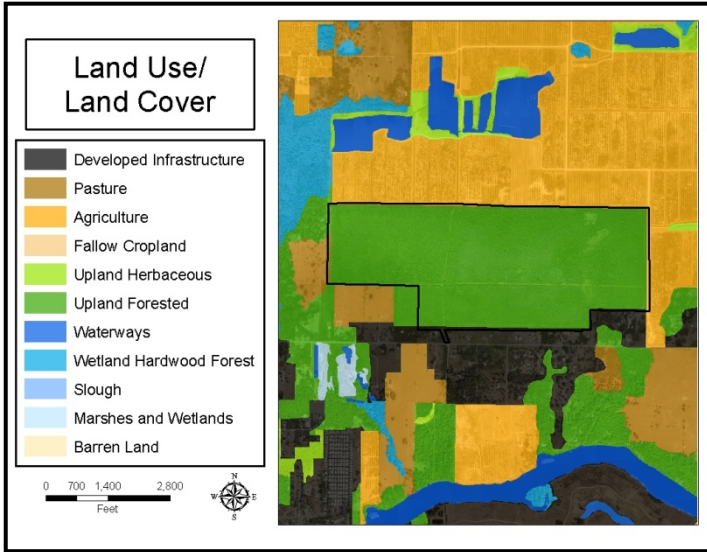
N. River Rd., Photos



The property contains a thick cover of Brazilian pepper with scattered pockets of cabbage palms.



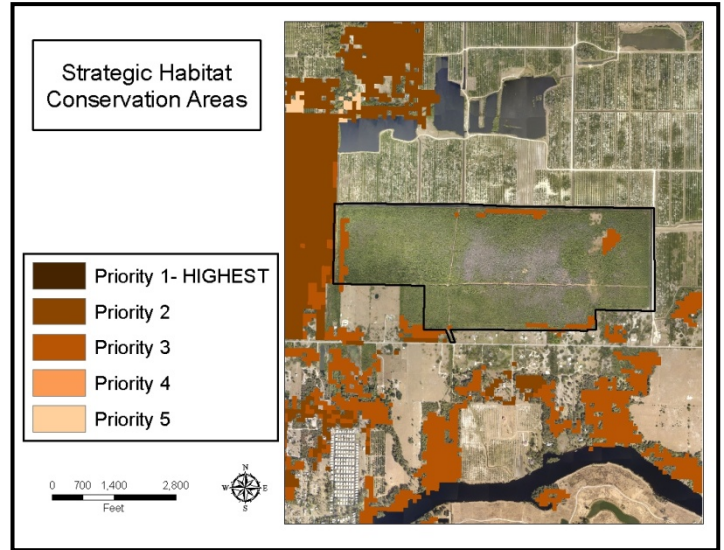
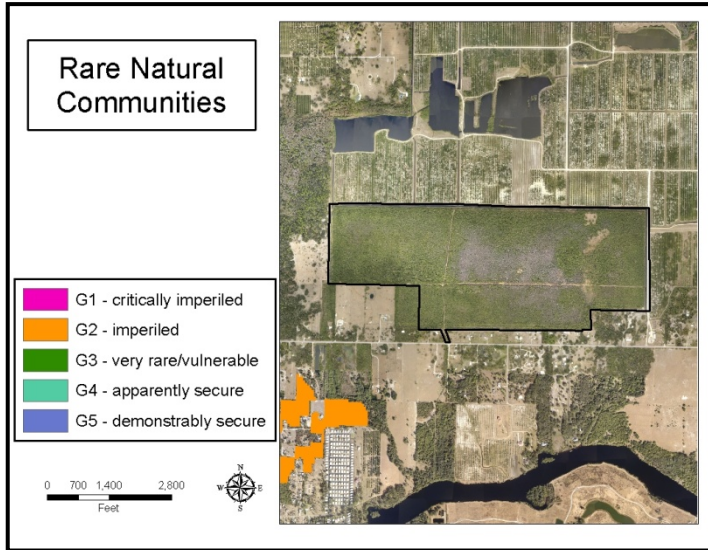
N. River Rd: Land Character



IMPORTANT DISCLAIMER: All maps in this document are a conceptual or planning tool only. The South Florida Water Management District does not guarantee or make any representation regarding the information contained herein. It is not self-executing or binding, and does not affect the interests of any persons or properties, including any present or future right or use of real property.

For more information on the data layers used in the assessment, please refer to the Land Assessment Study Process and Methodology document available here: http://www.sfwmd.gov/portal/page/portal/xrepository/sfwmd_repository_pdf/land_assessment_study_process.pdf

N. River Rd: Land Character (Continued)



IMPORTANT DISCLAIMER: All maps in this document are a conceptual or planning tool only. The South Florida Water Management District does not guarantee or make any representation regarding the information contained herein. It is not self-executing or binding, and does not affect the interests of any persons or properties, including any present or future right or use of real property.

For more information on the data layers used in the assessment, please refer to the Land Assessment Study Process and Methodology document available here: http://www.sfwmd.gov/portal/page/portal/xrepository/sfwmd_repository_pdf/land_assessment_study_process.pdf