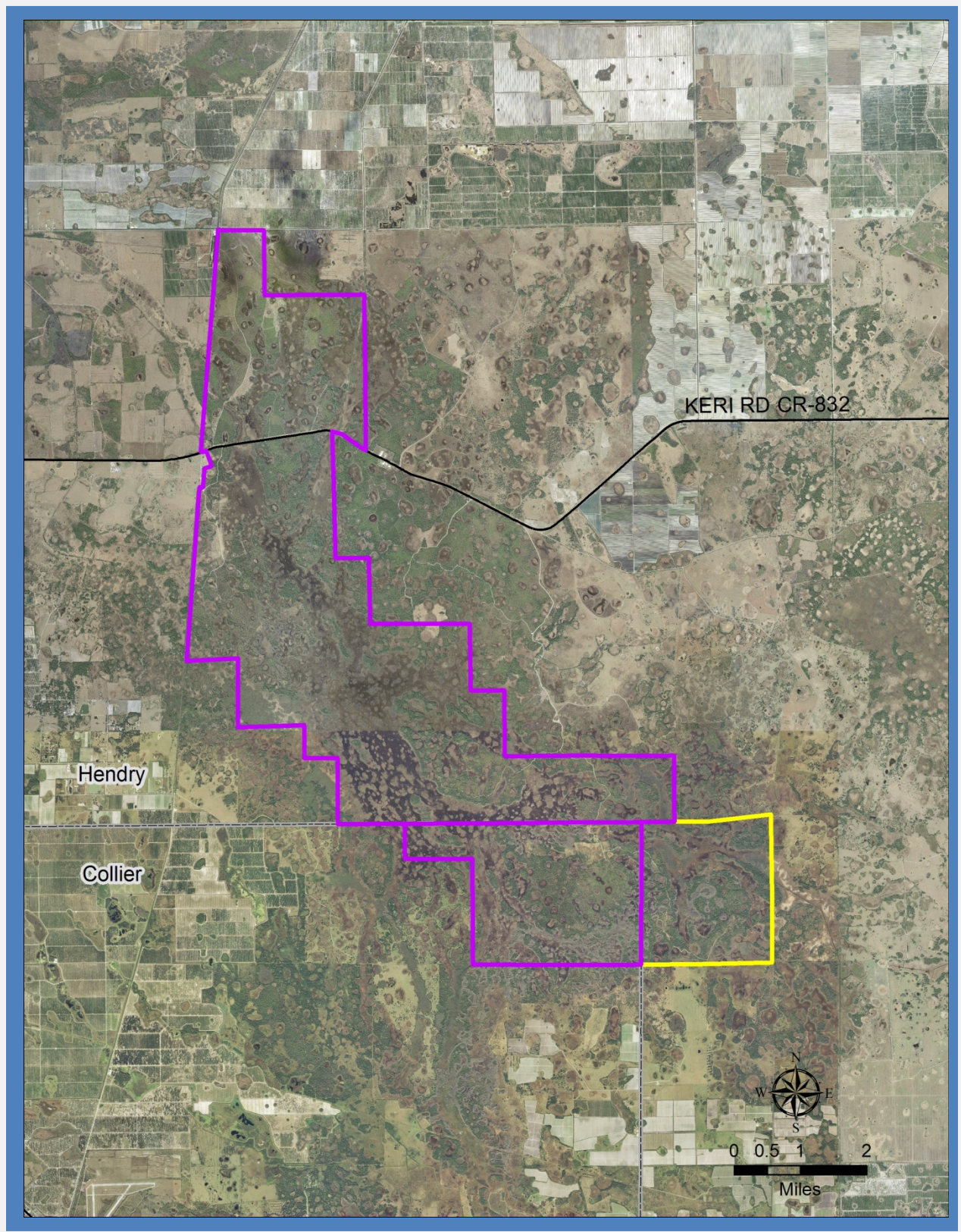


**Okaloacoochee Slough, District Ownership**  
**Map**



**Okaloacoochee Slough, District-owned parcels are outlined in yellow. Parcels with shared title between the State and the District are outlined in purple.**

**Okaloacoochee Slough**

Hendry and Collier Counties

Area within planning boundary footprint	~ 34,920 acres
District fee-simple ownership	~ 22,255 acres
Other public fee-simple ownership	~ 12,665 acres
Area under other protective restriction (conservation easement, platted preserve area, etc.)	0 acres

**Site Overview**

The state forest was purchased under the Conservation and Recreation Lands (CARL) Program using Preservation 2000 and Save Our Rivers funds.

**Core Mission Values**

The Okaloacoochee Slough, is a 13,000 acre slough that is oriented north-south and runs through pinelands and cypress swamp. Fakahatchee Strand and the Big Cypress Preserve are dependent on the water supplied by the Okaloacoochee Slough. The area supports natural systems restoration and protection, provides natural storage of water, helps mitigate flood damage through its storage capacity, and supplies clean water to downstream areas.

**Other Resource Value**

The Forest Service provides multiple-use management practices with a focus on ecosystem restoration, silviculture, watershed management, recreation and wildlife management, as well as archaeological and cultural resource management.

**Management Issues**

The area is managed by the Florida Forest Service and the Florida Fish and Wildlife conservation Commission.

**Public Use and Recreation Value**

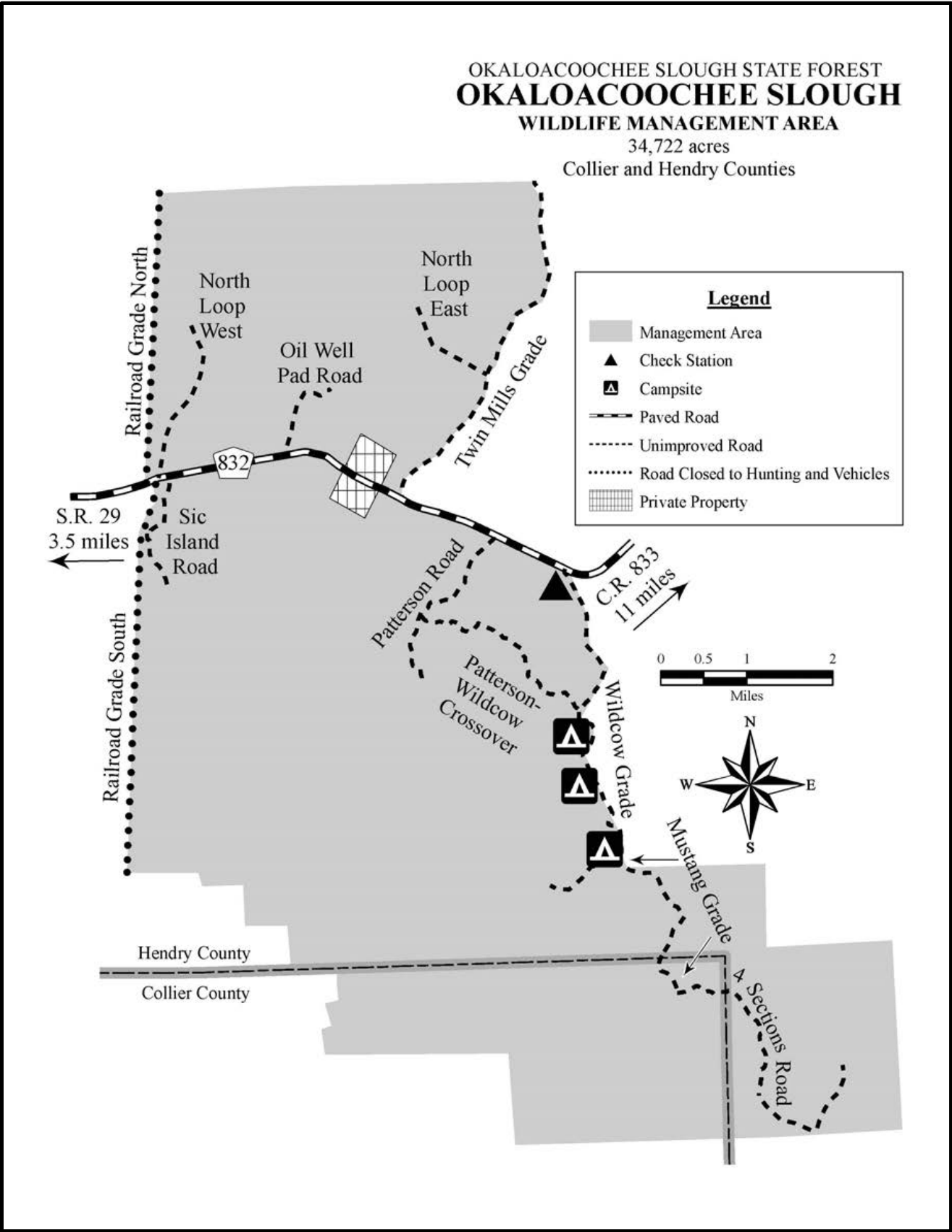
There are a variety of recreational uses available: hiking and bicycling on the forest roads, fishing spots, wildlife viewing, and hunting. The Florida Fish and Wildlife Conservation Commission coordinates all hunting activities; these are provided, in part, to offset the loss of upland hunting opportunities from the conversion of Brown's Farm Wildlife Management Area to STA 2.

**Assessment Units**

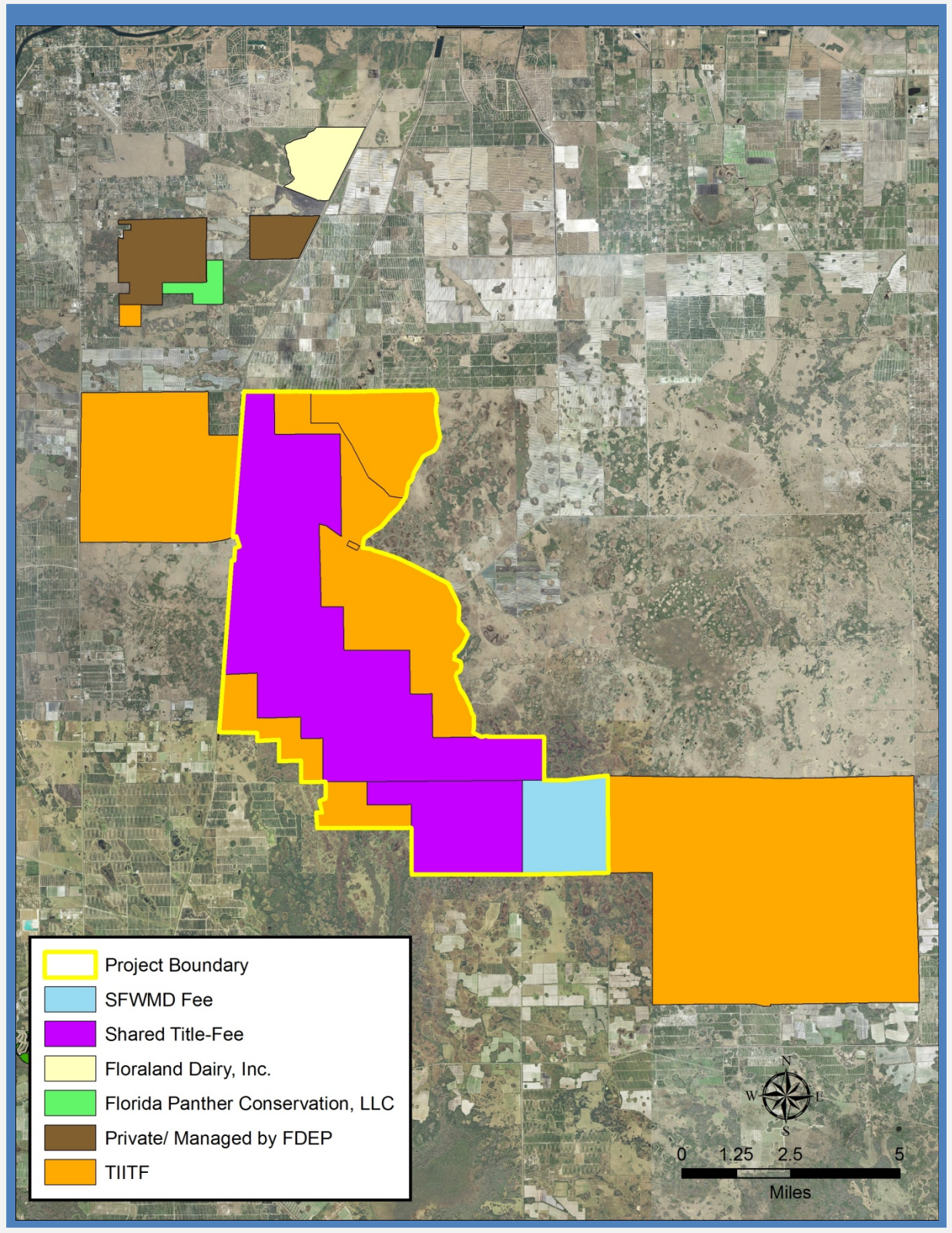
None.



**Okaloacoochee Slough FWC Hunting and Public Use Map**

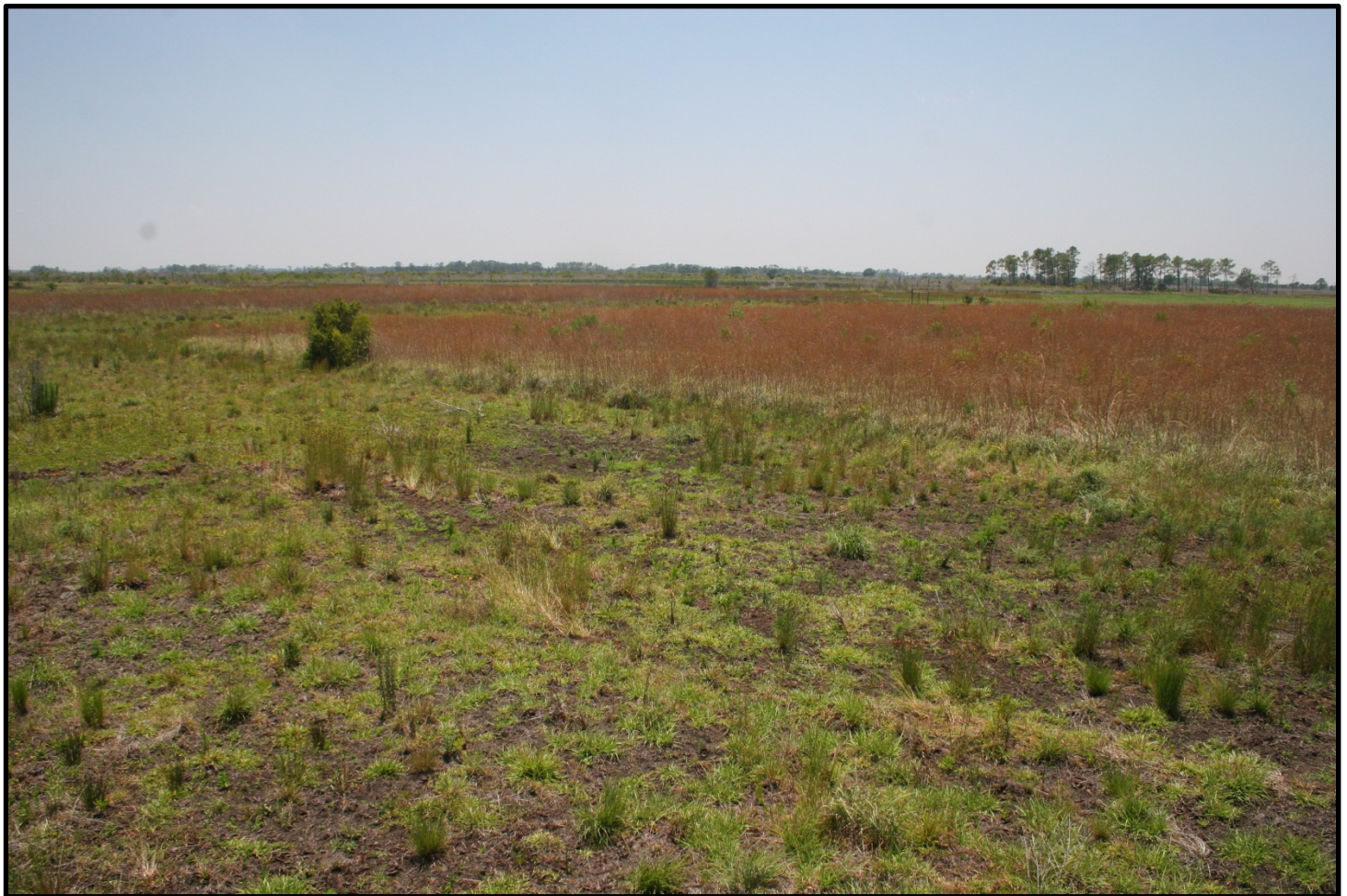


**Okaloacoochee Slough Area Public Land**





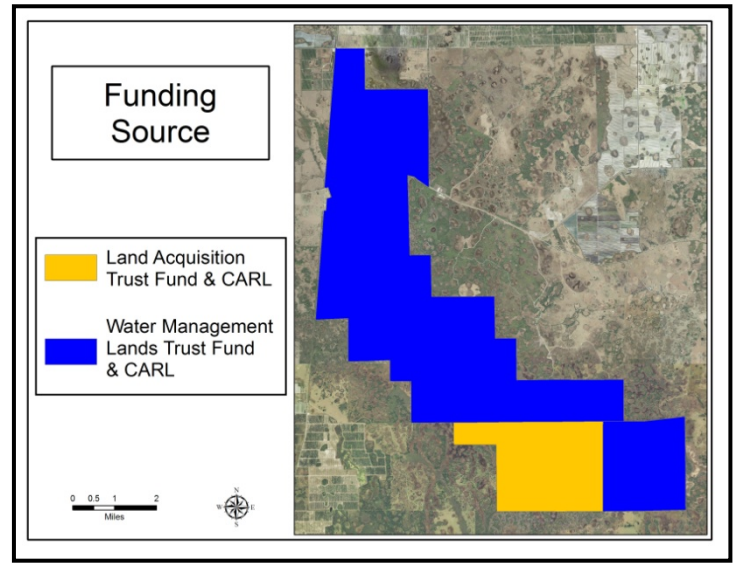
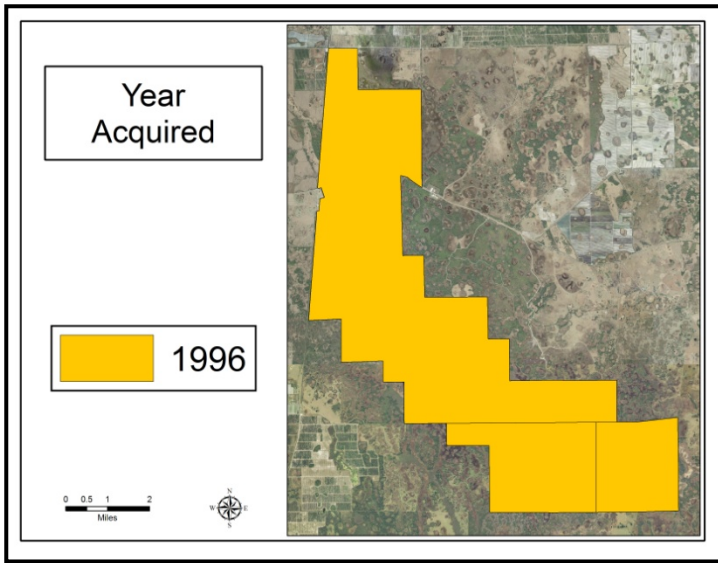
**Okaloacoochee Slough, Photos**



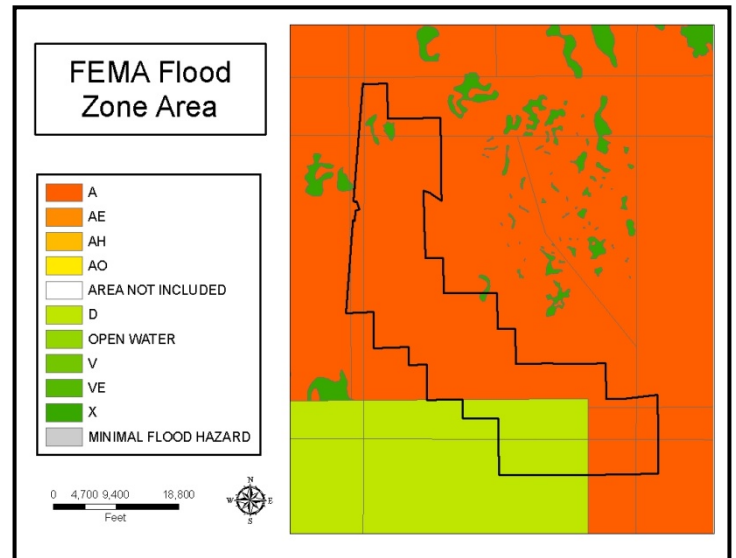
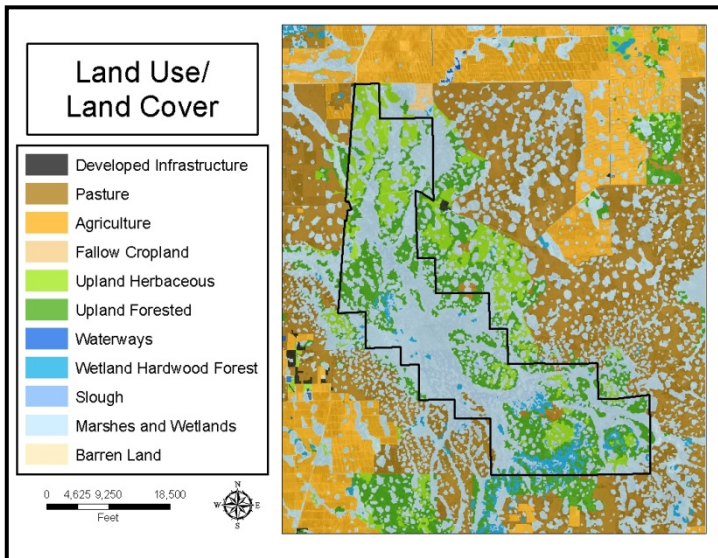
**Okaloacoochee slough in 1917 (upper left), an aerial view of the slough (upper right), and a groundcover restoration site (below)**



### Okaloacoochee Slough: Land Acquisition



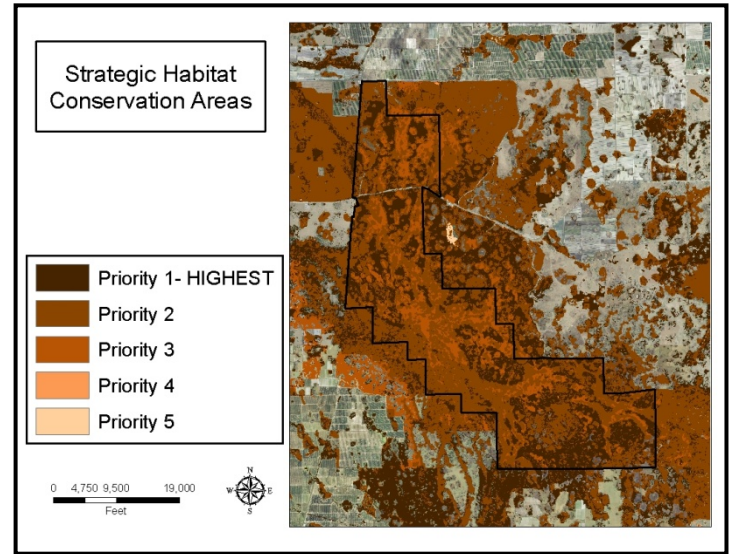
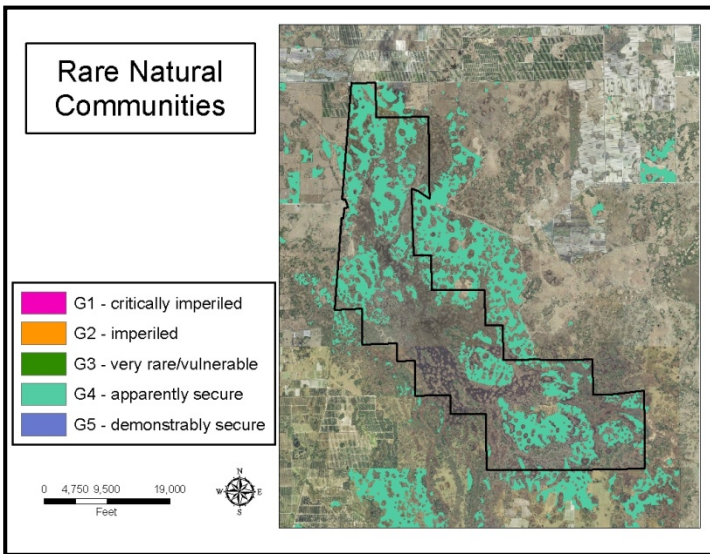
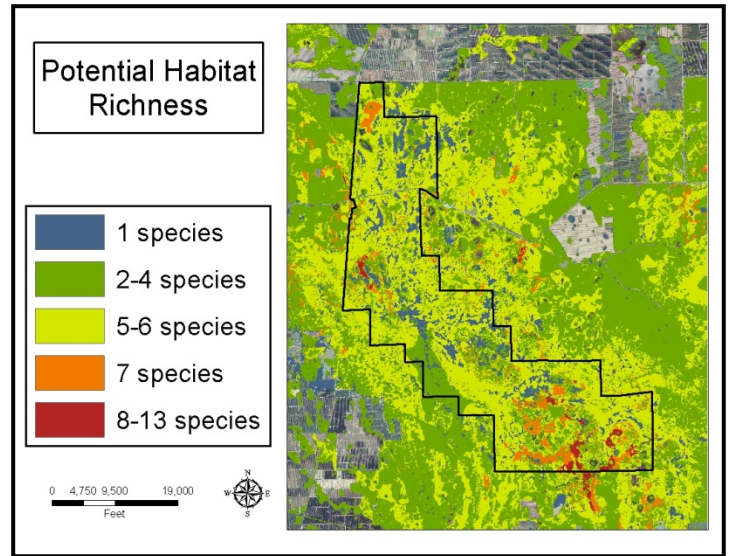
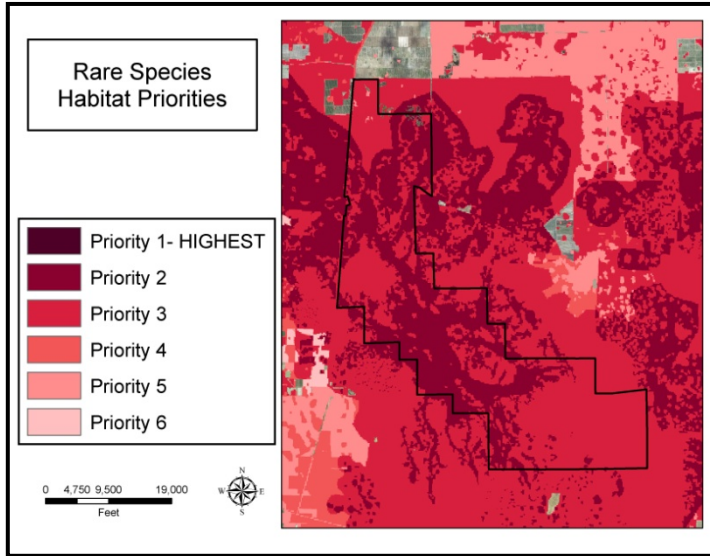
### Okaloacoochee Slough: Land Character



**IMPORTANT DISCLAIMER:** All maps in this document are a conceptual or planning tool only. The South Florida Water Management District does not guarantee or make any representation regarding the information contained herein. It is not self-executing or binding, and does not affect the interests of any persons or properties, including any present or future right or use of real property.

For more information on the data layers used in the assessment, please refer to the Land Assessment Study Process and Methodology document available here: [http://www.sfwmd.gov/portal/page/portal/xrepository/sfwmd\\_repository\\_pdf/land\\_assessment\\_study\\_process.pdf](http://www.sfwmd.gov/portal/page/portal/xrepository/sfwmd_repository_pdf/land_assessment_study_process.pdf)

## Okaloacoochee Slough: Land Character (Continued)



**IMPORTANT DISCLAIMER:** All maps in this document are a conceptual or planning tool only. The South Florida Water Management District does not guarantee or make any representation regarding the information contained herein. It is not self-executing or binding, and does not affect the interests of any persons or properties, including any present or future right or use of real property.

For more information on the data layers used in the assessment, please refer to the Land Assessment Study Process and Methodology document available here: [http://www.sfwmd.gov/portal/page/portal/xrepository/sfwmd\\_repository\\_pdf/land\\_assessment\\_study\\_process.pdf](http://www.sfwmd.gov/portal/page/portal/xrepository/sfwmd_repository_pdf/land_assessment_study_process.pdf)