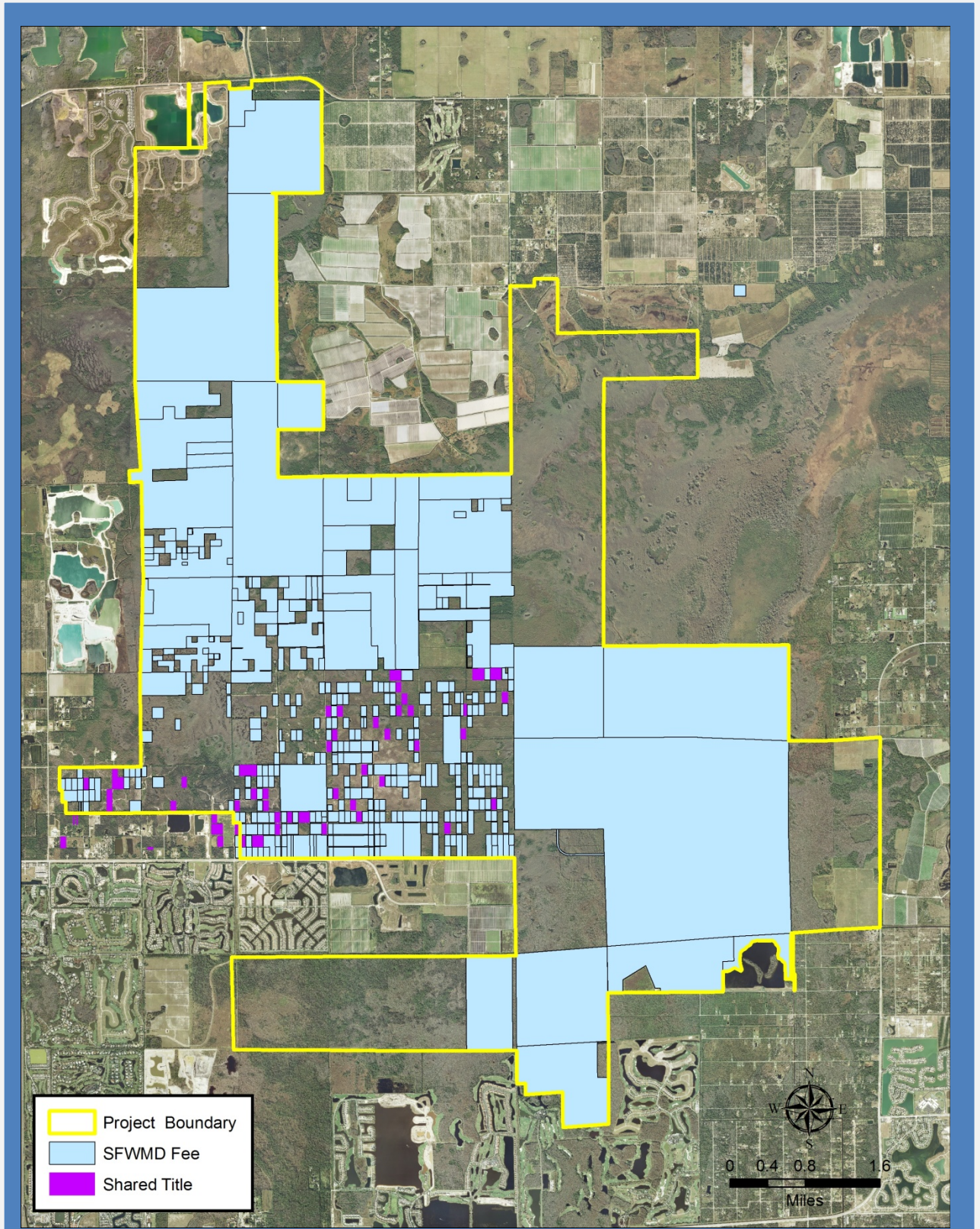
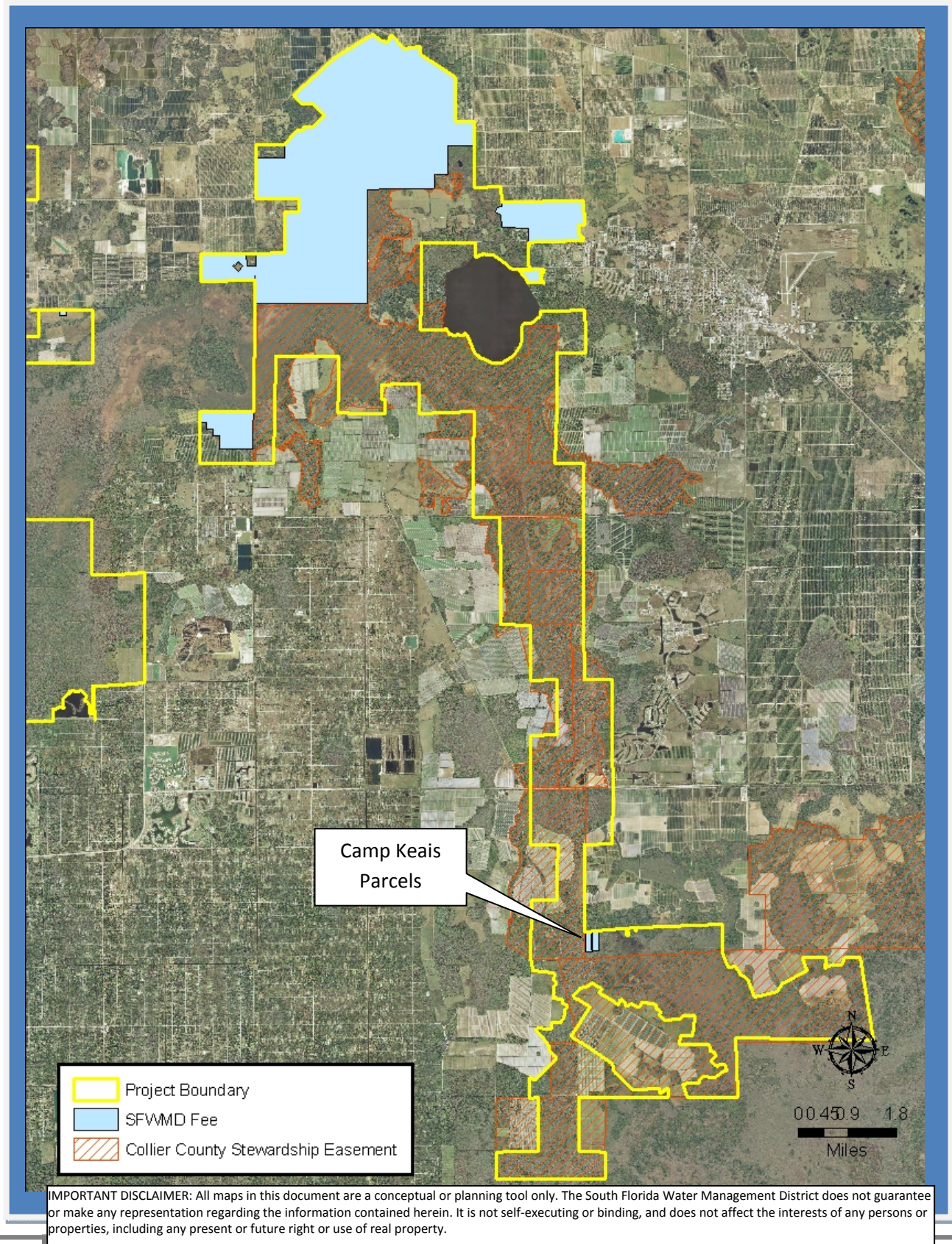


CREW District Ownership Map (West of the Corkscrew Sanctuary)



IMPORTANT DISCLAIMER: All maps in this document are a conceptual or planning tool only. The South Florida Water Management District does not guarantee or make any representation regarding the information contained herein. It is not self-executing or binding, and does not affect the interests of any persons or properties, including any present or future right or use of real property.

CREW District Ownership Map (East of the Corkscrew Sanctuary)



IMPORTANT DISCLAIMER: All maps in this document are a conceptual or planning tool only. The South Florida Water Management District does not guarantee or make any representation regarding the information contained herein. It is not self-executing or binding, and does not affect the interests of any persons or properties, including any present or future right or use of real property.

CREW

Lee and Collier Counties

- Area within planning boundary footprint ~ 63,062 acres
- District fee-simple ownership ~ 24,972 acres
- Other public fee-simple ownership ~ 5,689 acres
- Area under other protective restriction (conservation easement, platted preserve area, etc.) ~ 20,537 acres

Site Overview

The National Audubon Society's Corkscrew Swamp Sanctuary is located in the center of the CREW area, but is owned and managed by the Audubon Society as a separate management area. It divides CREW into a western half and eastern half.

Assessment Units

None, but see the individual parcel assessments at the end of this section.

Core Mission Values

CREW is a regionally significant wetland system. It lies in a large topographic basin and serves as the headwaters to the Imperial River and to Picayune Strand. The Southern CREW critical project is intended to aid water storage, natural systems restoration and flood control

Other Resource Value

Twenty years of land management and restoration activities has made the site a very diverse natural system of cypress swamps, wet flatwoods, marsh, and prairie. The western portion has been brought back from what had been a Melaleuca monoculture. The area is vital habitat for woodstorks, Florida Panthers and Black Bear.

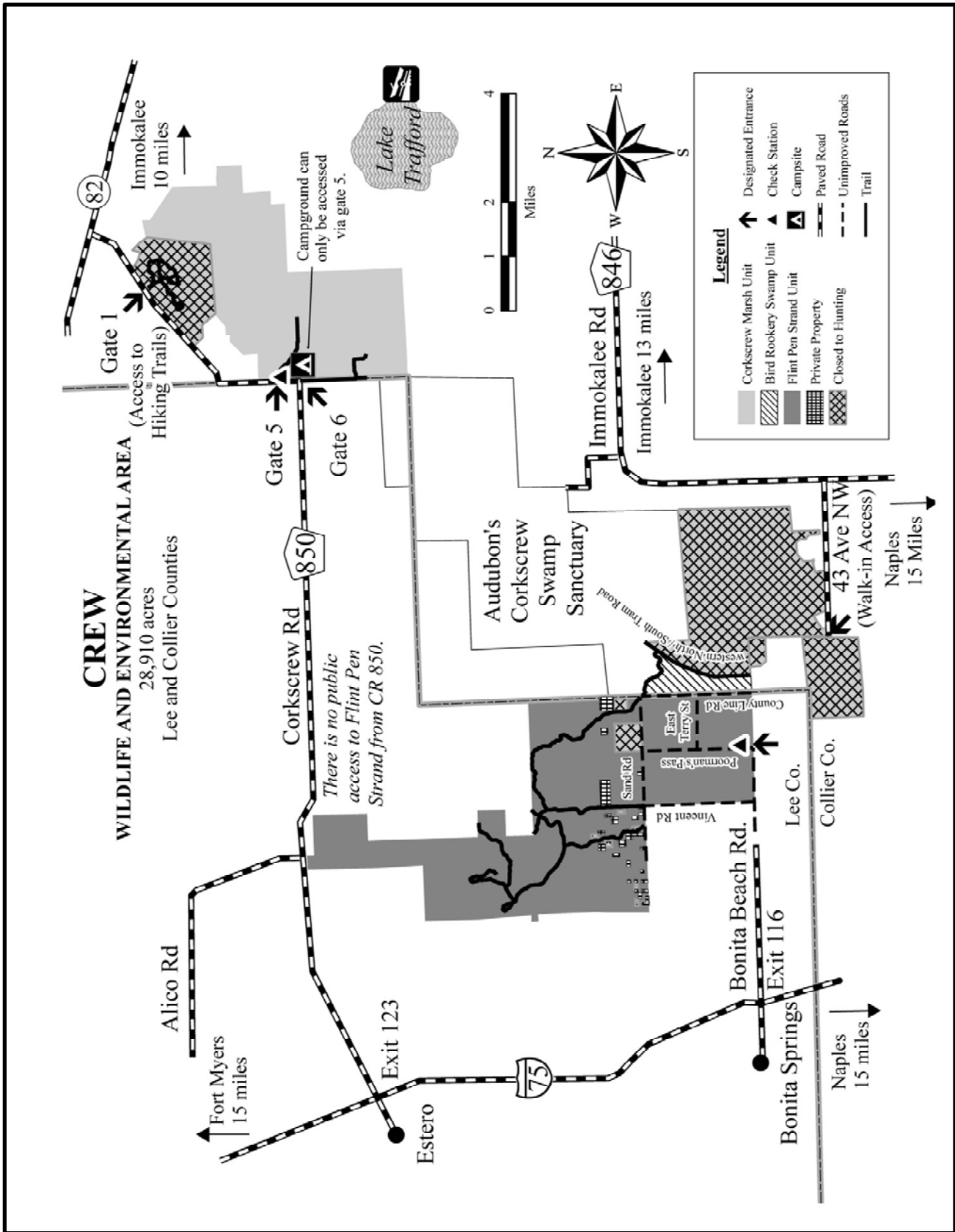
Management Issues

The area is managed by the District with the Florida Fish and Wildlife commission as a cooperating agency. The CREW Land and Water Trust provides education and outreach services on the property through a contract with the District.

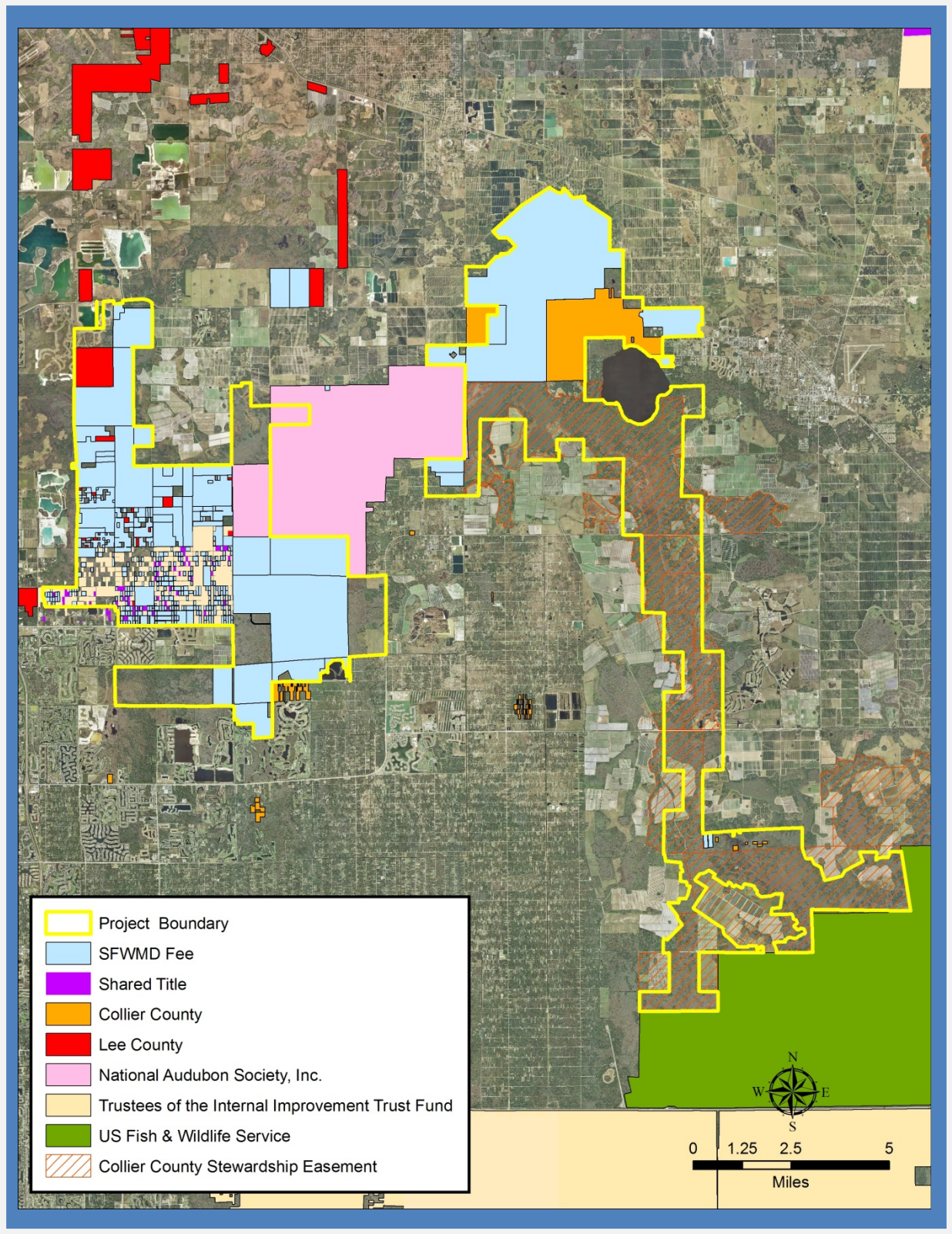
Public Use and Recreation Value

CREW has opportunities for hiking, bicycling, primitive camping, stargazing, hunting, geocaching, and wildlife viewing. There are three primary public use areas with developed facilities: the Corkscrew Marsh unit with boardwalks, marked trails, a raised observation deck, and an observation tower; the Bird Rookery Swamp trail system and boardwalk; and the Cypress Dome trailhead with marked trails.

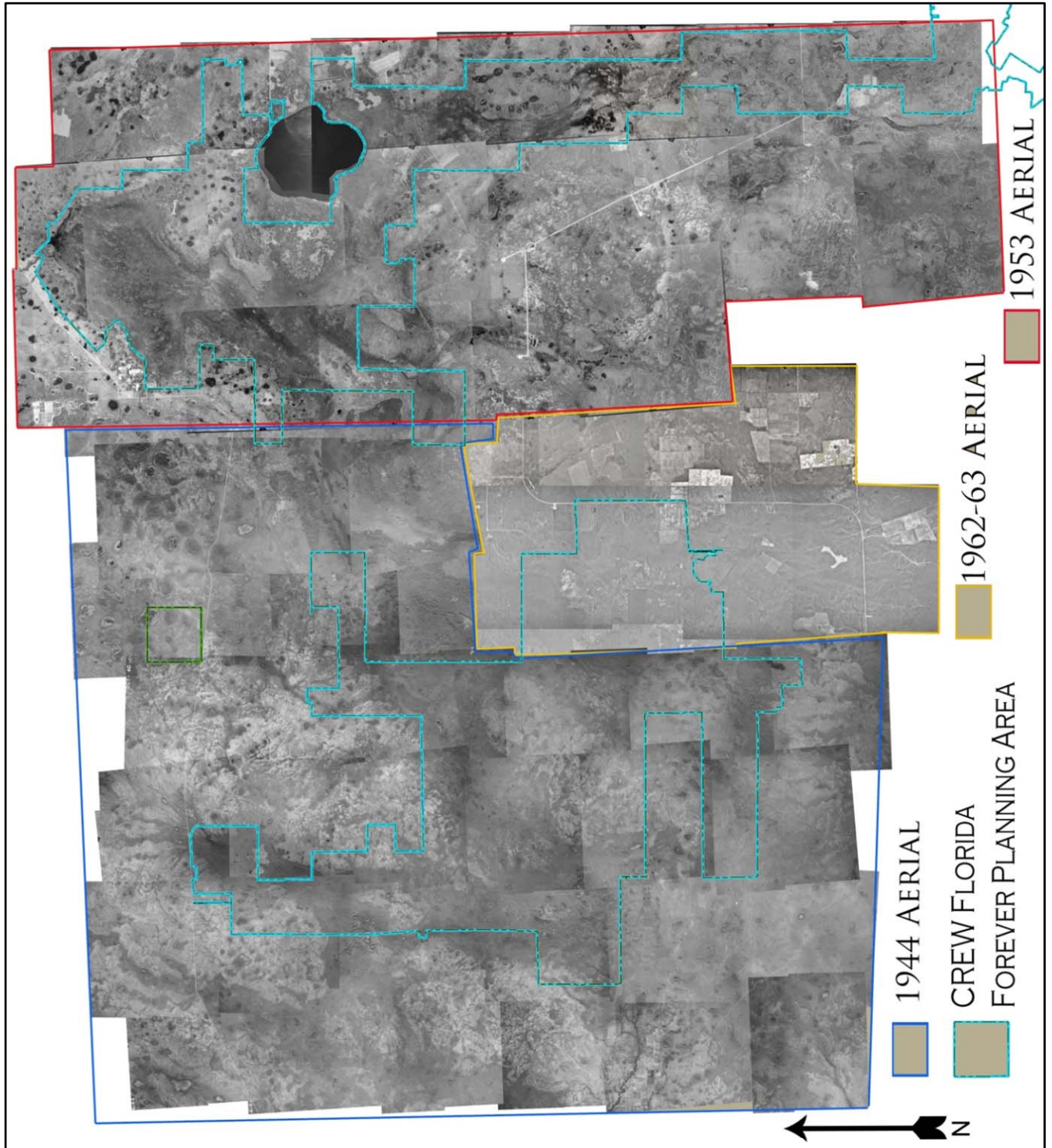
CREW FWC Hunting and Public Use Map



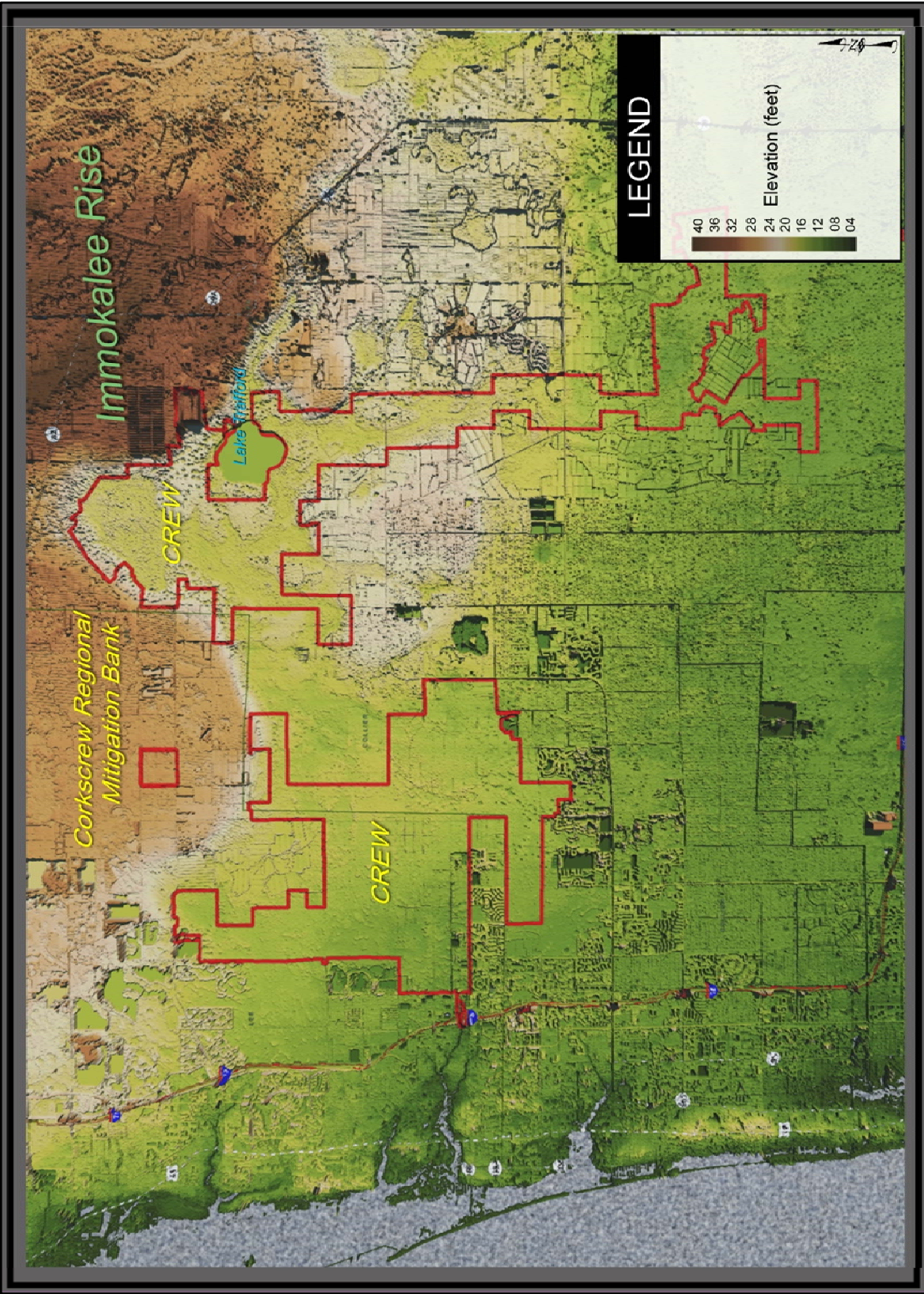
CREW Area Public Land



CREW Management Area with 1944 (west half) and 1953(east half) aerials



CREW Regional Topographic Setting



CREW, Photos



Much of the western side of CREW was a thick, and utterly unuseable, monoculture of melaleuca when it was acquired (above). Years of exotic treatments, hydrologic restoration, vegetation management, and prescribed fire has reclaimed thousands of acres of prime panther habitat (below, with the white trunks of treated melaleuca still visible).



CREW, Photos



Western CREW is a mosaic of cypress, wet flatwoods, and small depression marshes.

CREW, Photos



The southern area of CREW, known as Bird Rookery Swamp.

CREW, Photos



The Corkscrew Marsh of the northeastern area of CREW, the marsh is bounded by a mesic flatwood community to its north.



CREW, Photos

The restoration of vibrant and healthy natural communities at CREW has been achieved through the application of a wide range of management tools, such as mechanically shredding of willow, installation of ditch plugs to restore hydrology, aggressive exotic species control, and the regular application of prescribed fire



CREW, Photos



Black Bear and Panthers at CREW



CREW, Photos



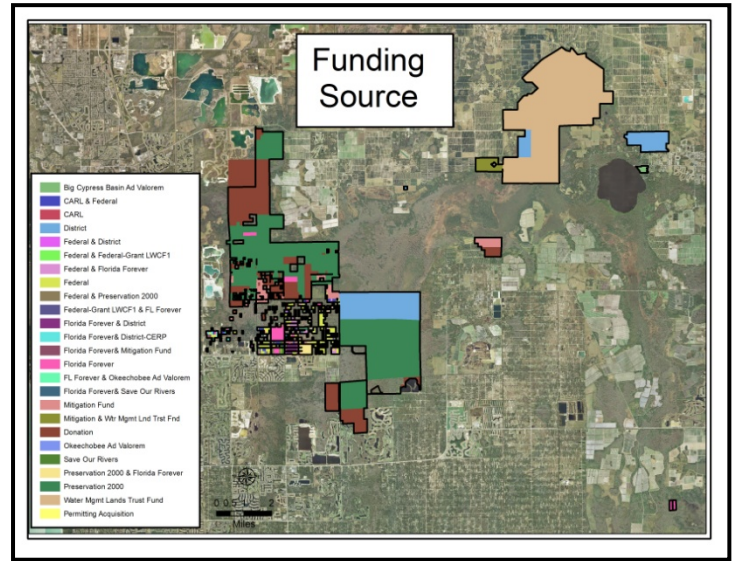
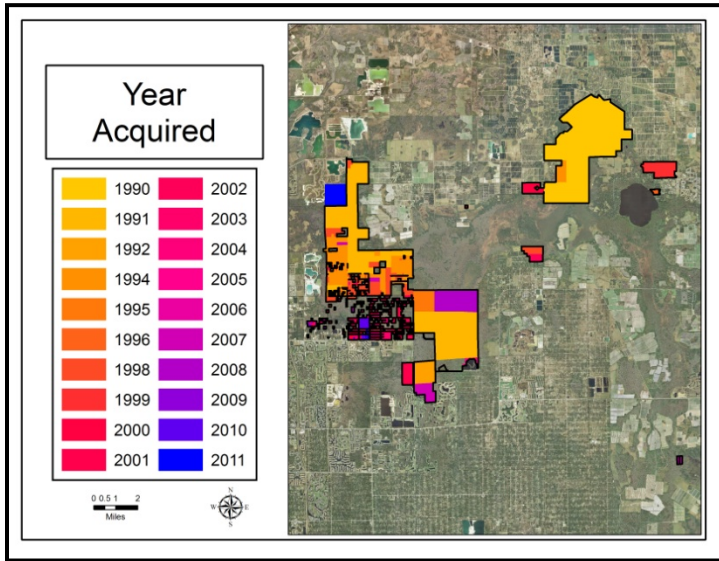
Hiking, bicycling, stargazing, hunting, and geocaching are popular activities at CREW.

CREW, Photos

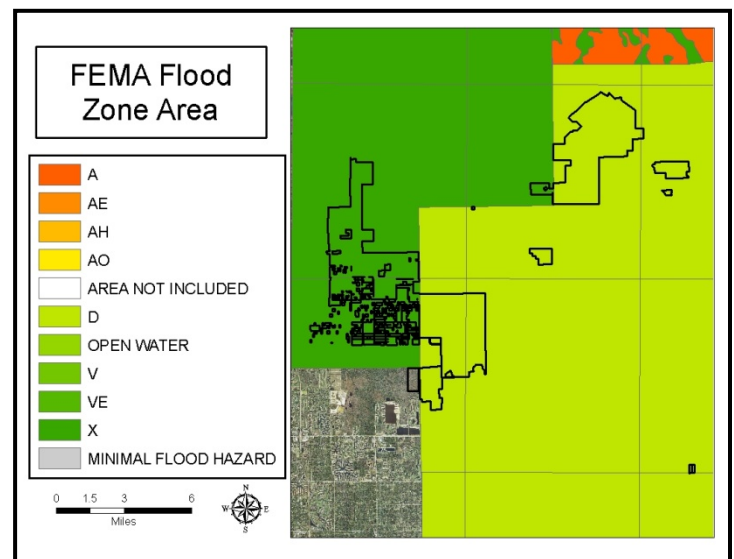
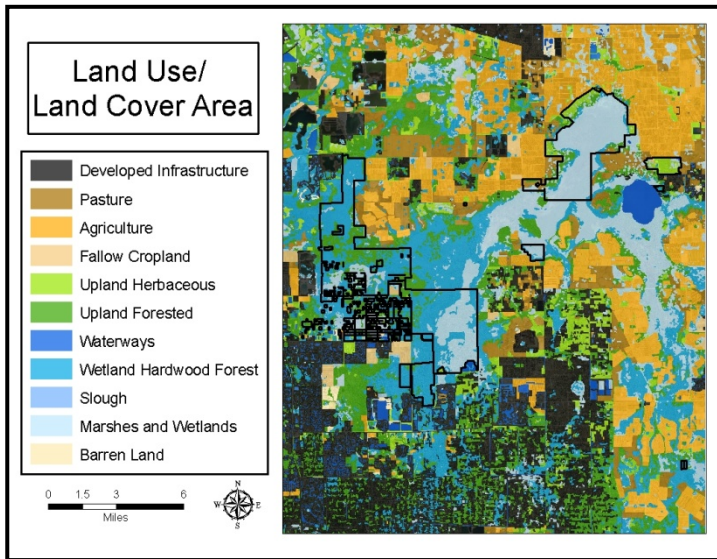


The CREW land and water trust provides public outreach and education services at CREW. The Trust hosts many educational programs throughout the year.

CREW: Land Acquisition



CREW: Land Character

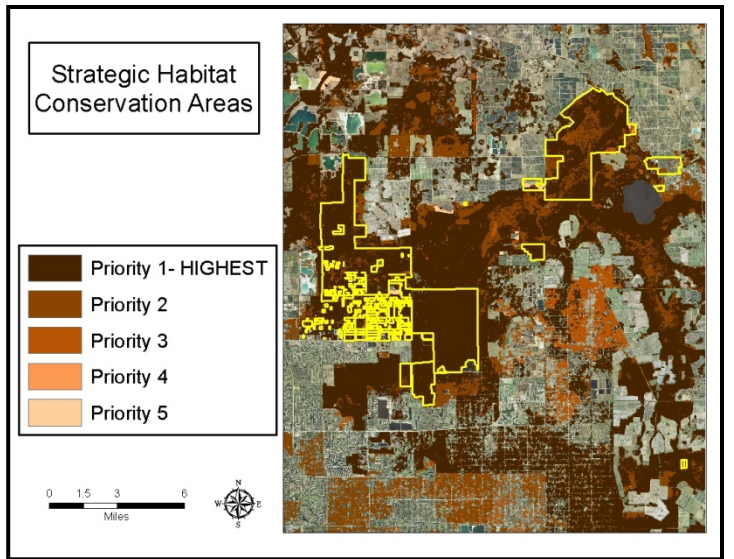
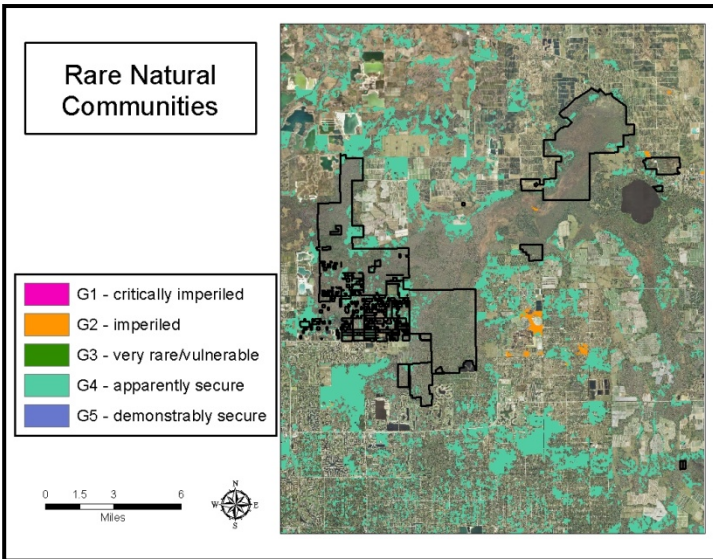
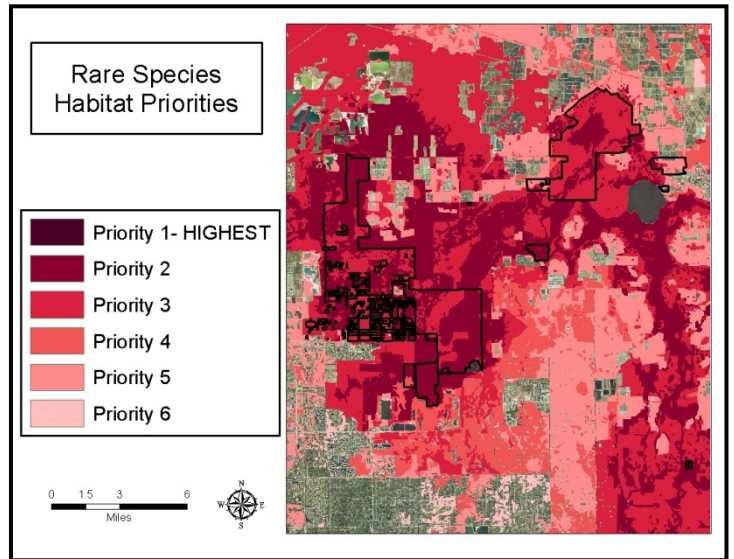
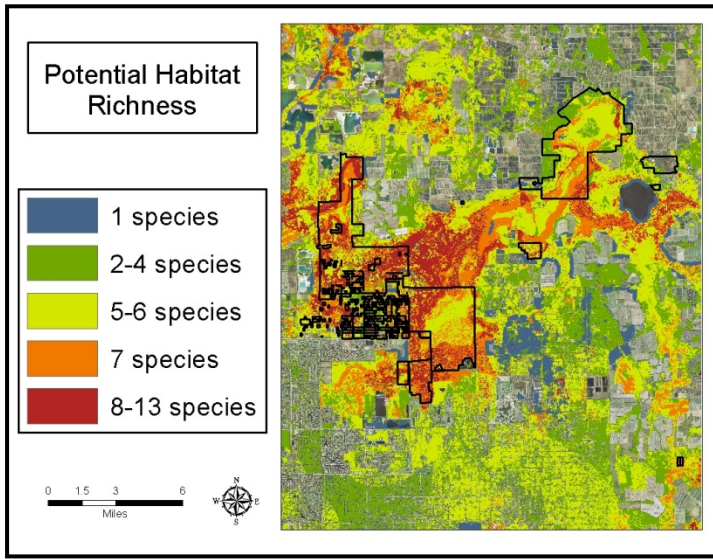


IMPORTANT DISCLAIMER: All maps in this document are a conceptual or planning tool only. The South Florida Water Management District does not guarantee or make any representation regarding the information contained herein. It is not self-executing or binding, and does not affect the interests of any persons or properties, including any present or future right or use of real property.

For more information on the data layers used in the assessment, please refer to the Land Assessment Study Process and Methodology document available here:

http://www.sfwmd.gov/portal/page/portal/xrepository/sfwmd_repository_pdf/land_assessment_study_process.pdf

CREW: Land Character (Continued)



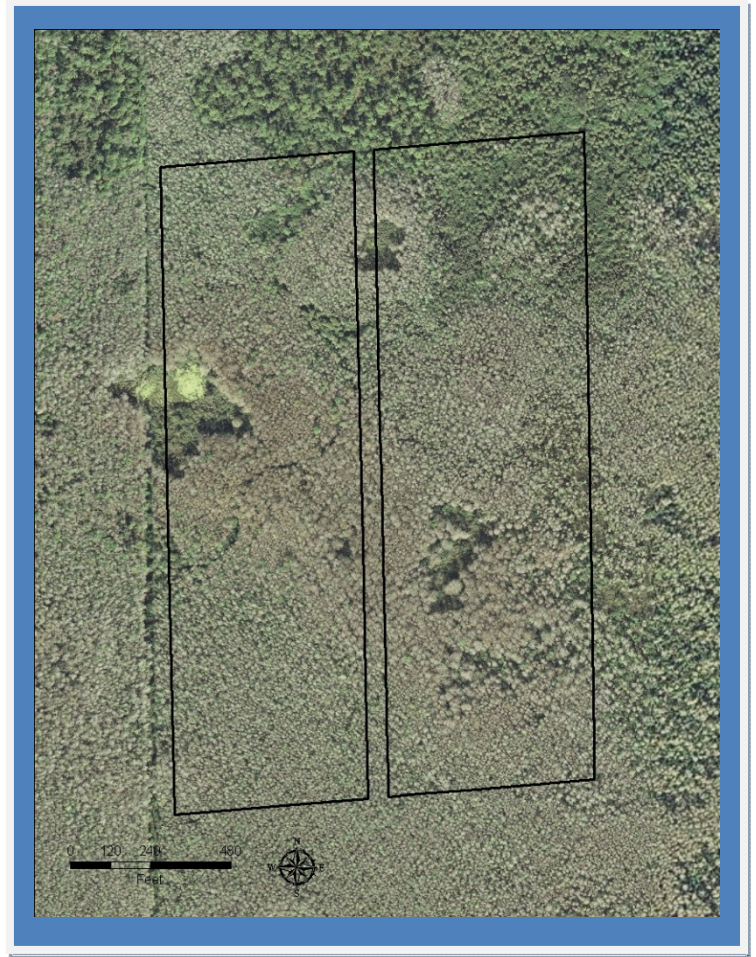
IMPORTANT DISCLAIMER: All maps in this document are a conceptual or planning tool only. The South Florida Water Management District does not guarantee or make any representation regarding the information contained herein. It is not self-executing or binding, and does not affect the interests of any persons or properties, including any present or future right or use of real property.

For more information on the data layers used in the assessment, please refer to the Land Assessment Study Process and Methodology document available here: http://www.sfwmd.gov/portal/page/portal/xrepository/sfwmd_repository_pdf/land_assessment_study_process.pdf

CREW Individual Parcel Assessments

Southern Camp Keais Strand Outparcels

Camp Keais Strand was purchased in 2007 with Florida Forever funding. It is a slough flowway that connects the Corkscrew Marsh and Lake Trafford to the north with Picayune Strand to the south. Following the acquisition of these parcels, Collier County’s Rural Land Stewardship growth management program secured Stewardship Easements over most of the intervening land. Collier County and the Conservancy of Southwest Florida have acquired several of the small parcels adjacent to the District-owned parcels. These parcels lie 16 miles south of the other District-managed lands in CREW and lack any means of direct access. Consequently, these parcels are difficult to manage.

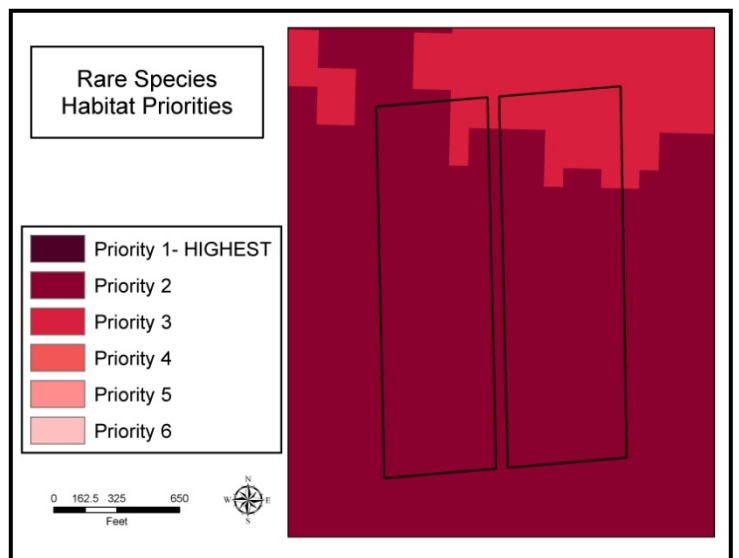
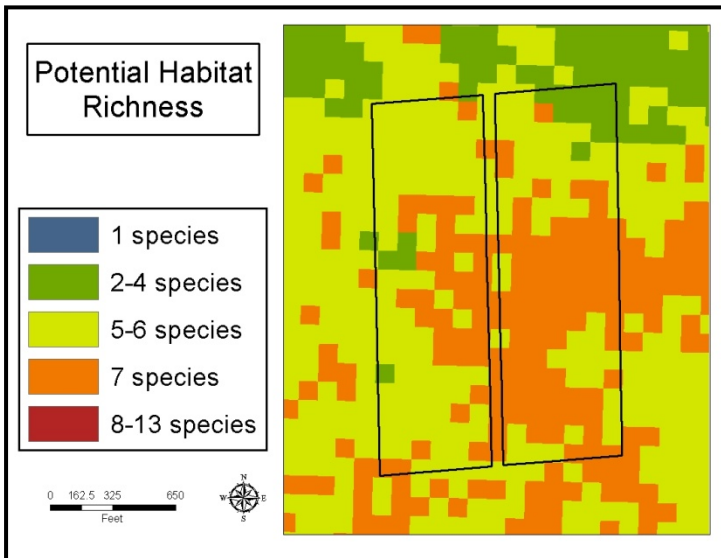
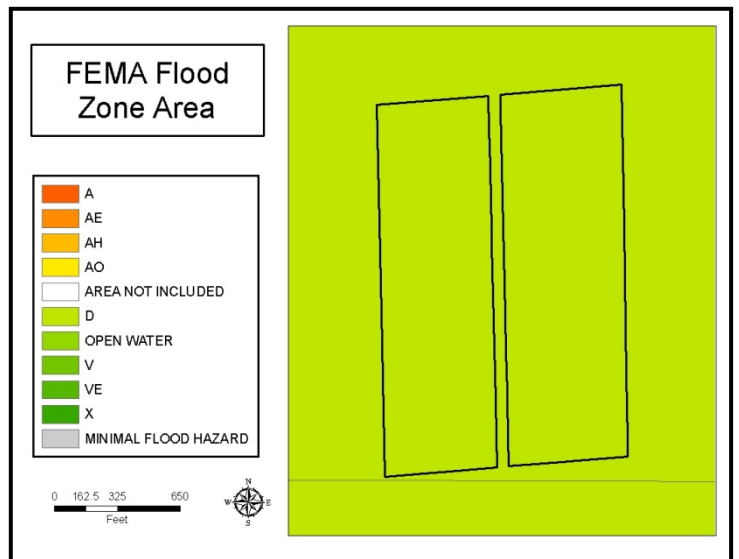
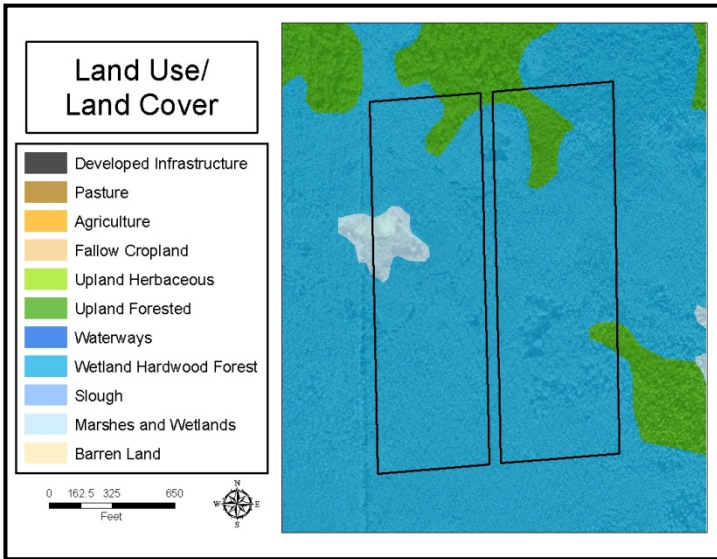


Camp Keais Strand Outparcels, oblique photo



No ground views are available since the site is inaccessible

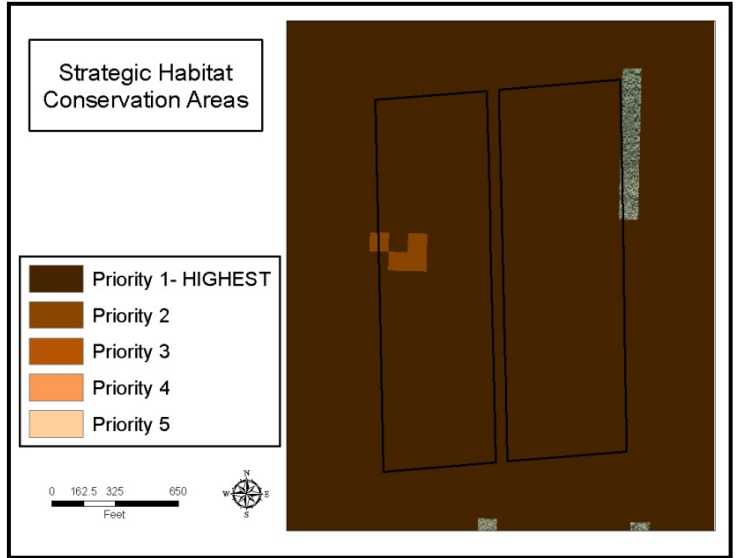
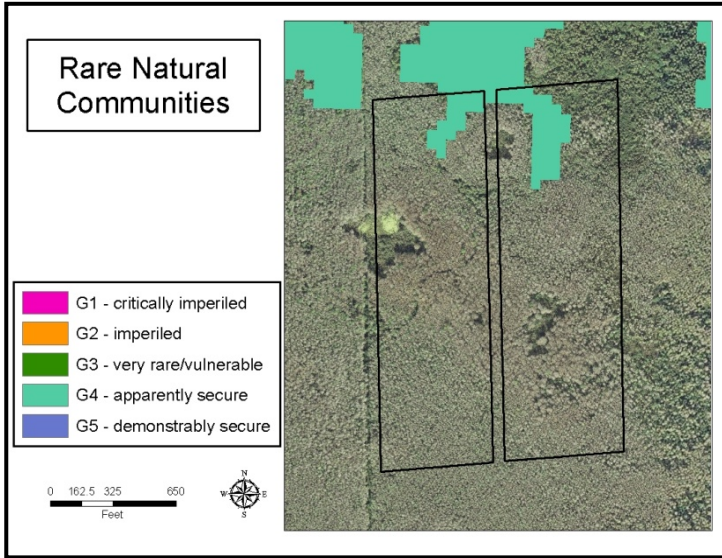
**CREW Parcel Assessment – Camp Keais
Strand Outparcel, Land Character**



IMPORTANT DISCLAIMER: All maps in this document are a conceptual or planning tool only. The South Florida Water Management District does not guarantee or make any representation regarding the information contained herein. It is not self-executing or binding, and does not affect the interests of any persons or properties, including any present or future right or use of real property.

For more information on the data layers used in the assessment, please refer to the Land Assessment Study Process and Methodology document available here: http://www.sfwmd.gov/portal/page/portal/xrepository/sfwmd_repository_pdf/land_assessment_study_process.pdf

**CREW Parcel Assessment – Camp Keais
Strand Outparcel, Land Character (continued)**



IMPORTANT DISCLAIMER: All maps in this document are a conceptual or planning tool only. The South Florida Water Management District does not guarantee or make any representation regarding the information contained herein. It is not self-executing or binding, and does not affect the interests of any persons or properties, including any present or future right or use of real property.

For more information on the data layers used in the assessment, please refer to the Land Assessment Study Process and Methodology document available here: http://www.sfwmd.gov/portal/page/portal/xrepository/sfwmd_repository_pdf/land_assessment_study_process.pdf