

**Corkscrew Regional Mitigation Bank**

Lee County

- Area within planning boundary footprint ~ 633 acres
- District fee-simple ownership ~ 633 acres
- Other public fee-simple ownership ~ 0 acres
- Area under other protective restriction (conservation easement, platted preserve area, etc.) ~ 0 acres

**Site Overview**

The Corkscrew Regional Mitigation Bank consists of 632 acres, situated along the southern edge of the Imperial Marsh Mitigation Project. The goal has been to restore historic wetland function through hydroperiod restoration, exotic removal and controlled burn. These efforts are ongoing.

**Assessment Units**

None.

**Core Mission Values**

The area supports natural systems restoration by providing mitigation for impacts to wetlands.

**Other Resource Value**

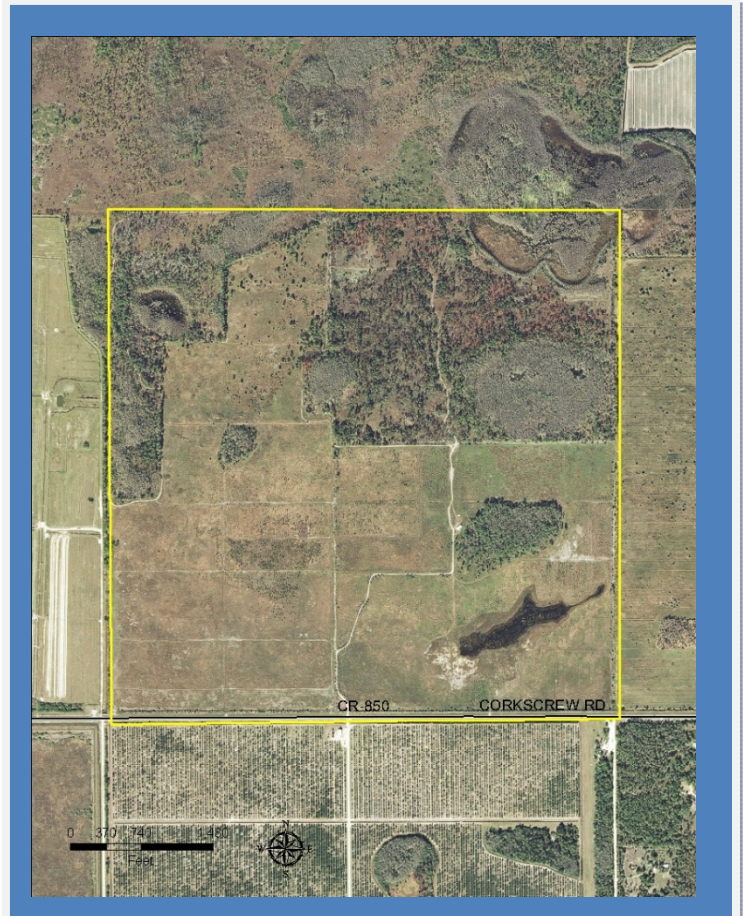
The area borders the Imperial Marsh mitigation project, expanding the amount of protected conservation land in the area.

**Management Issues**

The area is managed by EarthMark, a private company, until all of the credits are sold and restoration success is achieved. Proceeds from the sale of credits are shared with the district to fund other land management needs and the long-term management of the property.

**Public Use and Recreation Value**

The mitigation bank is not currently open for recreation because the restoration of the site is ongoing.



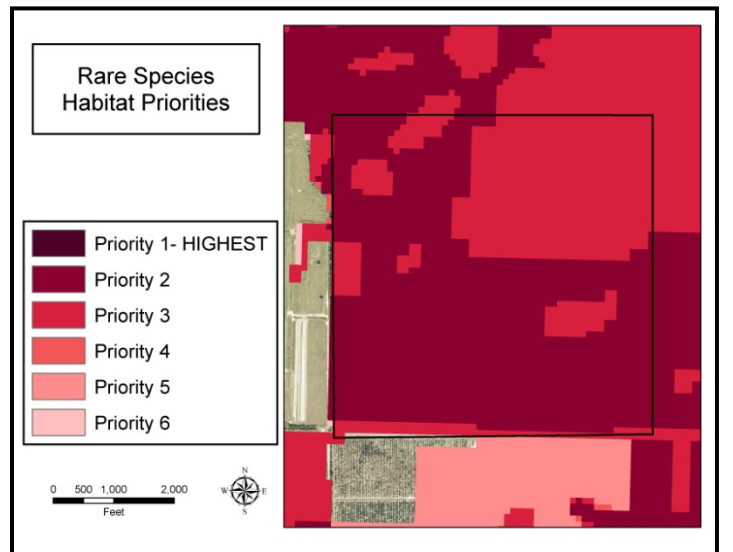
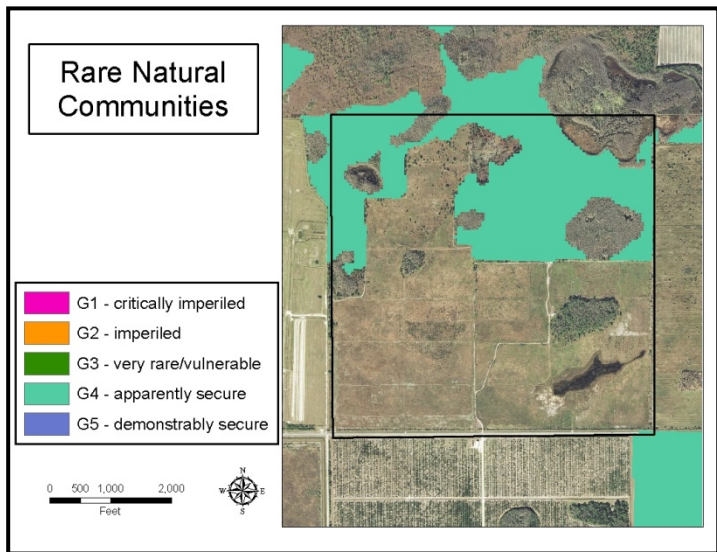
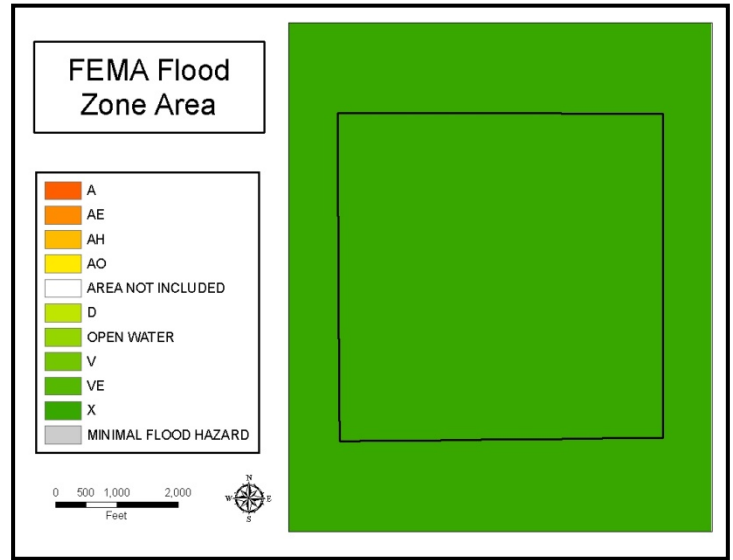
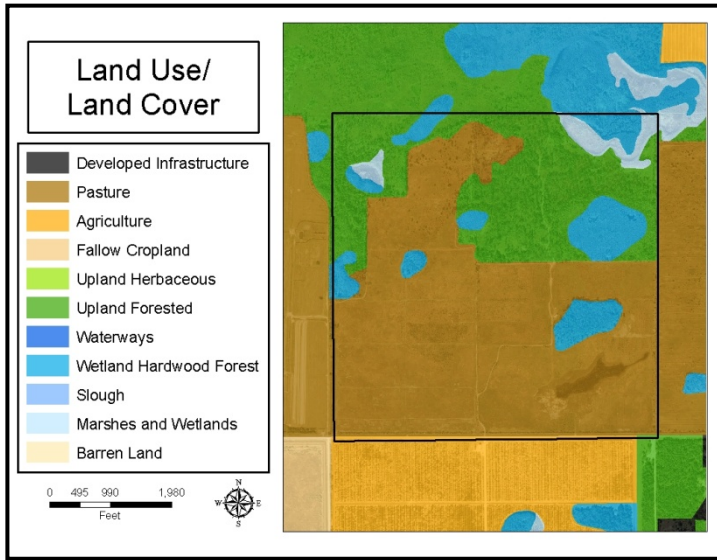
**The Corkscrew Regional Mitigation Bank, purchased in 1996 with funding from the Water Management Lands Trust Fund. District ownership is outlined in yellow.**

Corkscrew Regional Mitigation Bank, Photos



Heavy equipment re-contouring the land to its historic condition (top), ground crews planting hydric pines (bottom left), and a fireline on the northern part of the property (bottom right).

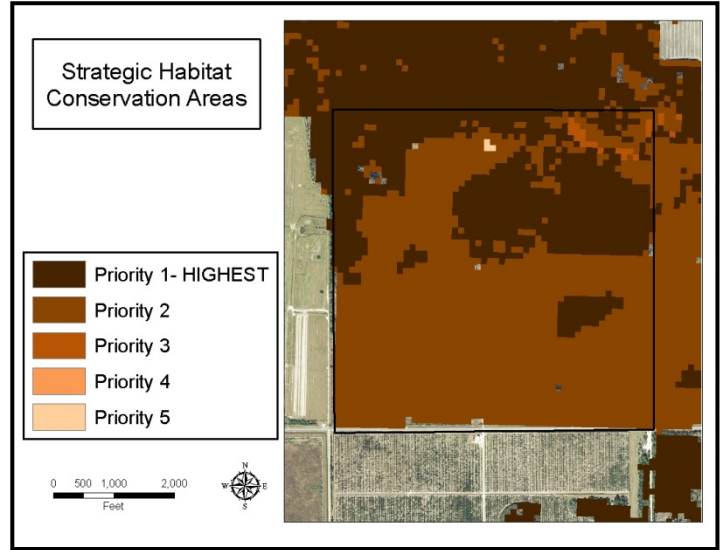
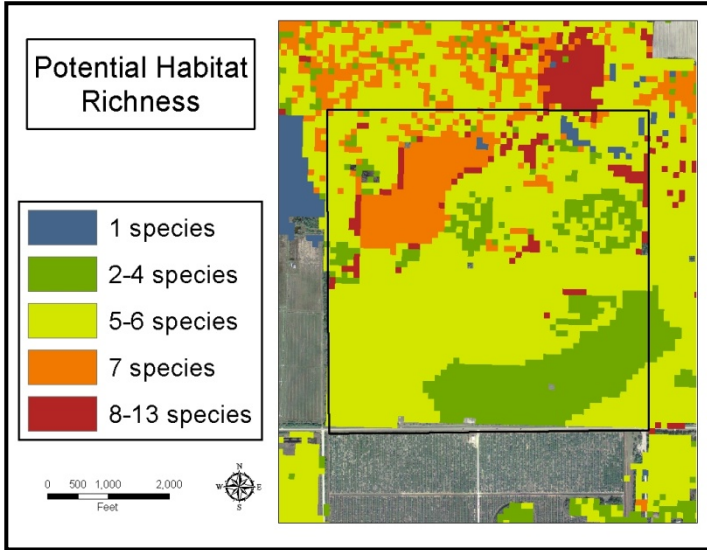
### Corkscrew Regional Mitigation Bank: Land Character



**IMPORTANT DISCLAIMER:** All maps in this document are a conceptual or planning tool only. The South Florida Water Management District does not guarantee or make any representation regarding the information contained herein. It is not self-executing or binding, and does not affect the interests of any persons or properties, including any present or future right or use of real property.

For more information on the data layers used in the assessment, please refer to the Land Assessment Study Process and Methodology document available here: [http://www.sfwmd.gov/portal/page/portal/xrepository/sfwmd\\_repository\\_pdf/land\\_assessment\\_study\\_process.pdf](http://www.sfwmd.gov/portal/page/portal/xrepository/sfwmd_repository_pdf/land_assessment_study_process.pdf)

**Corkscrew Regional Mitigation Bank: Land Character (Continued)**



**IMPORTANT DISCLAIMER:** All maps in this document are a conceptual or planning tool only. The South Florida Water Management District does not guarantee or make any representation regarding the information contained herein. It is not self-executing or binding, and does not affect the interests of any persons or properties, including any present or future right or use of real property.

For more information on the data layers used in the assessment, please refer to the Land Assessment Study Process and Methodology document available here: [http://www.sfwmd.gov/portal/page/portal/xrepository/sfwmd\\_repository\\_pdf/land\\_assessment\\_study\\_process.pdf](http://www.sfwmd.gov/portal/page/portal/xrepository/sfwmd_repository_pdf/land_assessment_study_process.pdf)