

Caloosahatchee Water Quality Treatment and Testing Facility

Glades County

- District fee-simple ownership ~ 1773.45 acres
- Other public fee-simple ownership ~ 0 acres
- Area under other protective restriction (conservation easement, platted preserve area, etc.) ~ 0 acres

Site Overview

This property was acquired to test nutrient removal technologies to help clean water flowing into the Caloosahatchee River. Most of the road frontage area along SR 80 is intended to be made available for surplus in the near future pursuant to the terms of the acquisition.

Assessment Units

None.

Core Mission Values

This is a water quality project that is in the planning stage.

Other Resource Value

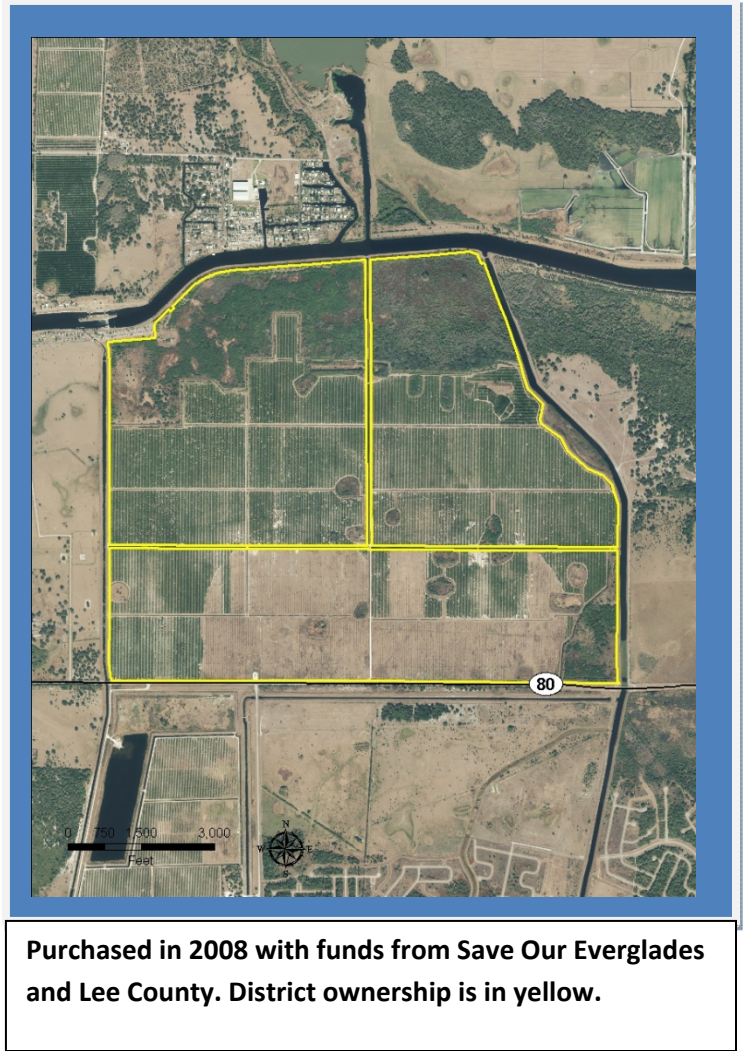
Treatment cells often make valuable wildlife habitat. There is an above-ground impoundment on the northern side, between the citrus and the river, which is part of the grove’s surface water management plan required by permit.

Management Issues

The area is being evaluated for leasing and dispersed water management as an interim use. The center of the property is under a current citrus lease.

Public Use and Recreation Value

There are no developed recreation facilities, but the project is adjacent to the Army Corps’ Ortona Locks campground. The district is evaluating the public use potential of the river frontage and the grove’s above-ground-impoundment on the north side of the property.



Purchased in 2008 with funds from Save Our Everglades and Lee County. District ownership is in yellow.

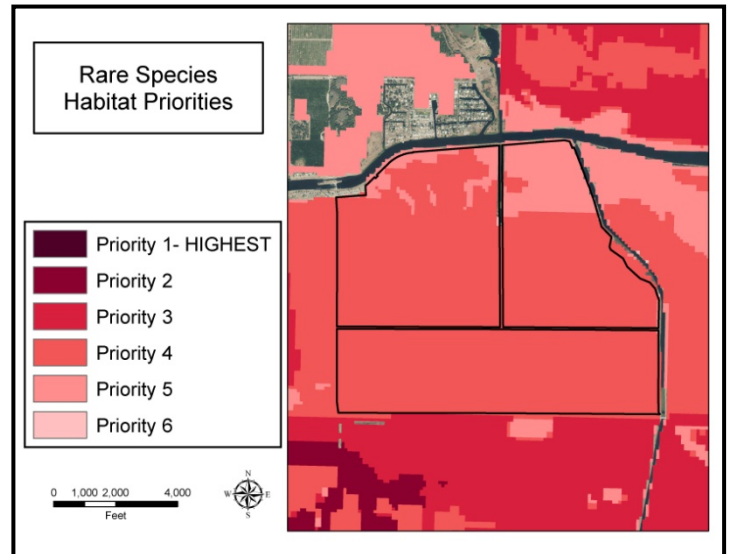
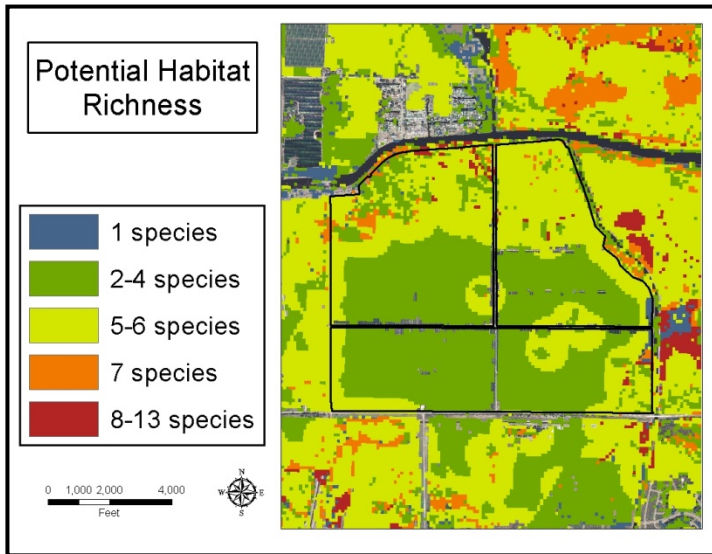
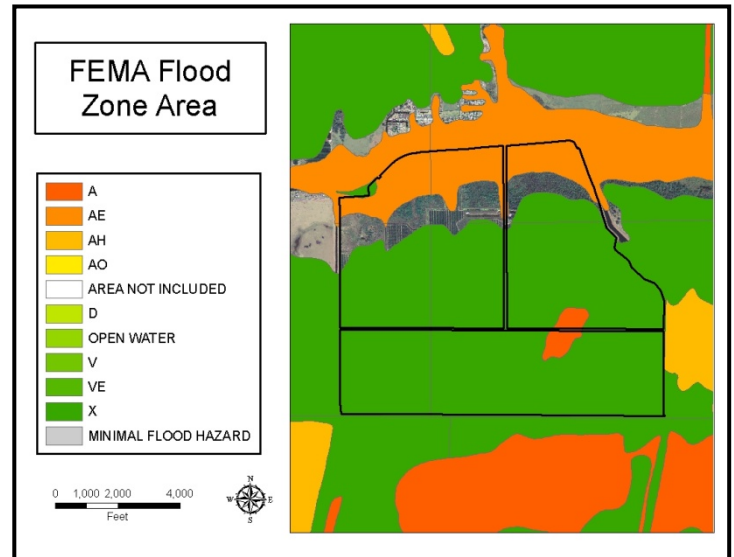
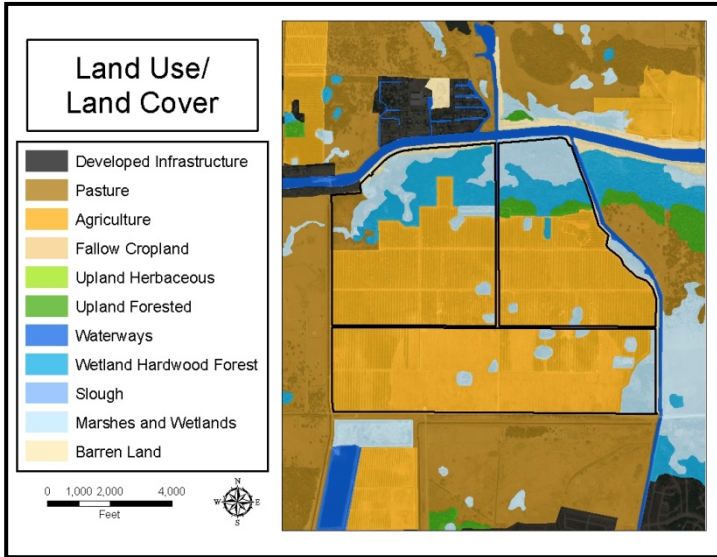
Caloosahatchee Water Quality Treatment and Testing Facility, Photos



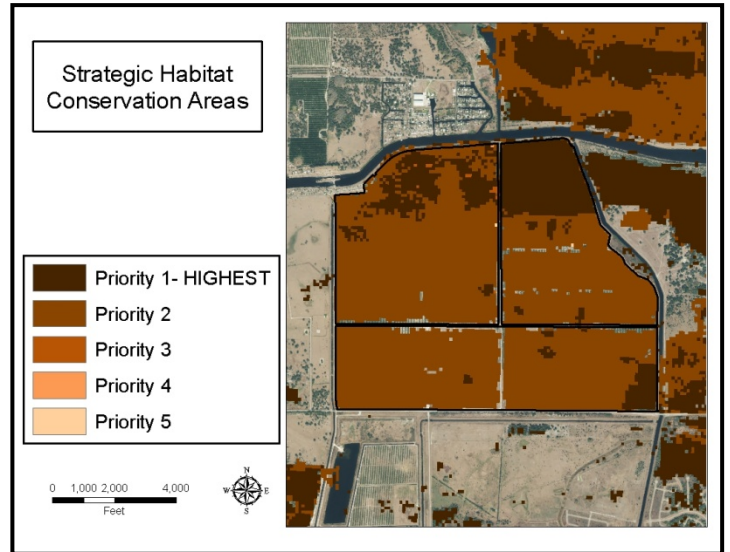
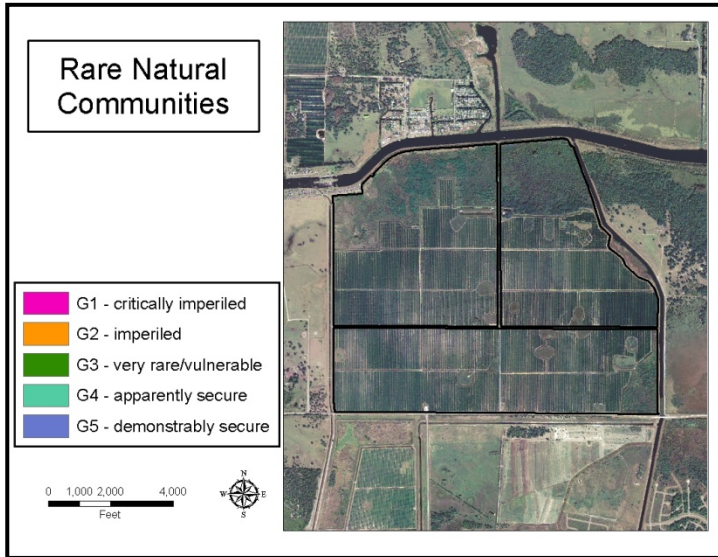
The site of the future Caloosahatchee Water Quality Treatment and Testing Facility.



Caloosahatchee Water Quality Treatment and Testing Facility: Land Character



Caloosahatchee Water Quality Treatment and Testing Facility: Land Character (Continued)



IMPORTANT DISCLAIMER: All maps in this document are a conceptual or planning tool only. The South Florida Water Management District does not guarantee or make any representation regarding the information contained herein. It is not self-executing or binding, and does not affect the interests of any persons or properties, including any present or future right or use of real property.

For more information on the data layers used in the assessment, please refer to the Land Assessment Study Process and Methodology document available here: http://www.sfwmd.gov/portal/page/portal/xrepository/sfwmd_repository_pdf/land_assessment_study_process.pdf