

C-43 Reservoir

Hendry County

- Area within planning boundary footprint ~ 10,507 acres
- District fee-simple ownership ~ 10,491 acres
- w/in project boundary; ~1,921 acres outside
- Other public fee-simple ownership ~ 0 acres
- Area under other protective restriction (conservation easement, platted preserve area, etc.) ~ 16.27 acres

Site Overview

The Caloosahatchee River (C-43) West Basin Storage Reservoir Project was initiated under the Water Resources Development Act (WRDA) of 2000. The projects includes an above ground reservoir with a total storage capacity of approximately 160,000 acre-feet. The reservoir will be located in the C-43 Basin which spans Hendry, Glades, Charlotte, Collier, and Lee counties. This project is designed to capture C-43 Basin runoff and releases from Lake Okeechobee.

Assessment Units

None, but see the parcel assessment below.

Core Mission Values

The reservoir will be designed for environmental water supply benefits to the Caloosahatchee Estuary that will reduce the salinity and nutrient impacts of runoff to the estuary and some flood attenuation.

Other Resource Value

Reservoirs can be valuable habitat for wildlife.

Management Issues

The area is being evaluated for leasing and dispersed water management as an interim use.

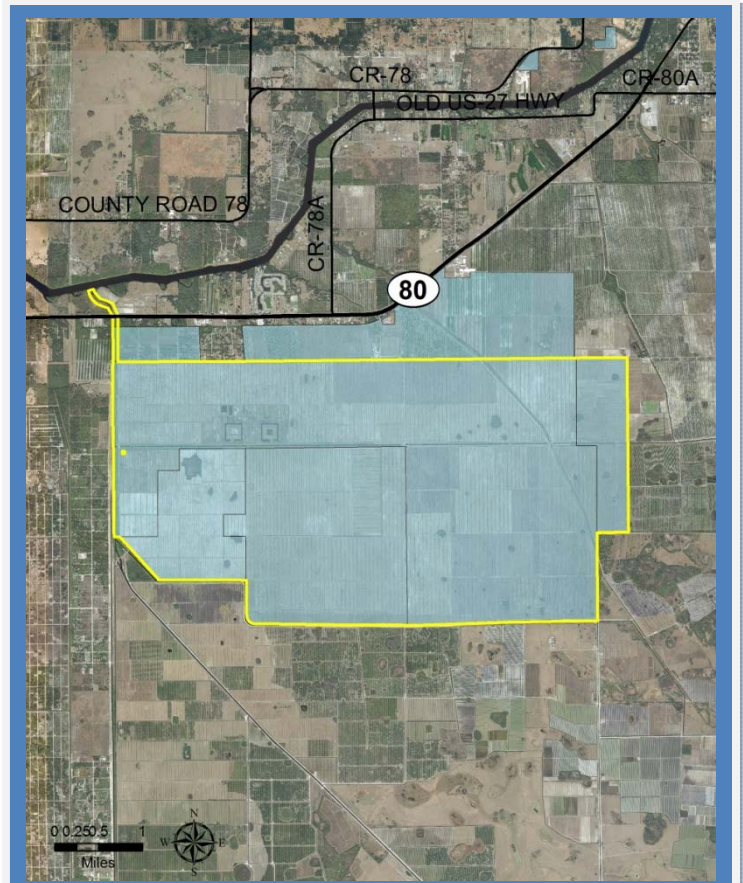
Public Use and Recreation Value

The area currently has limited public use opportunities and is not currently open for recreation.

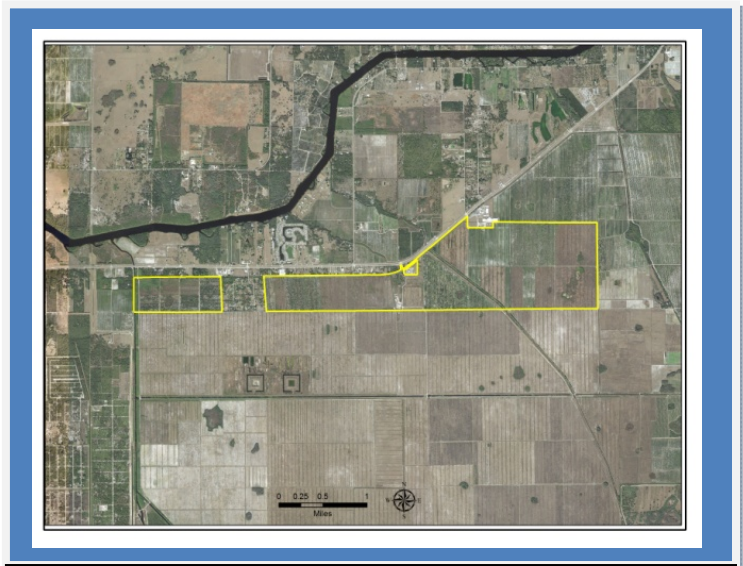
Individual Parcel Assessment

North of the Project Parcels

Project planning has determined that the footprint of the reservoir project will not cover all of the land that is owned. There are two parcels of citrus land between the project area and SR 80 that will not be needed for the project.



The C-43 reservoir. Project boundary is in yellow. District ownership is in blue.



The two parcels of citrus land that lie outside of the property that is needed for the reservoir project.

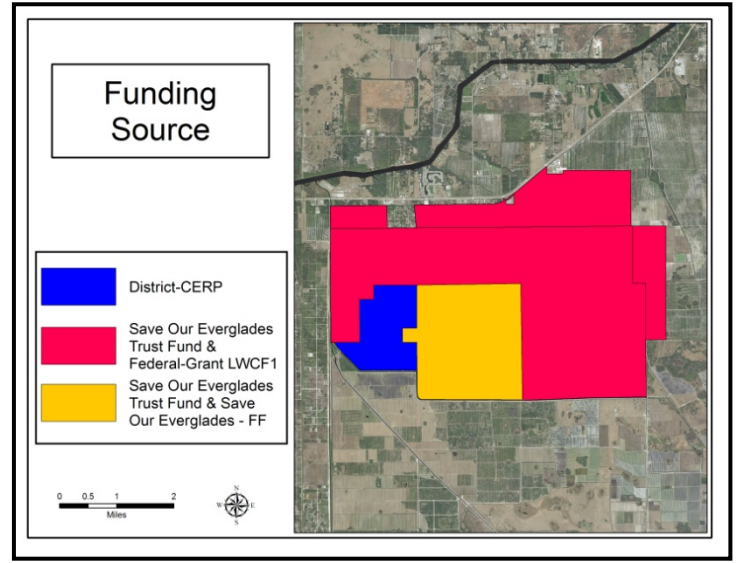
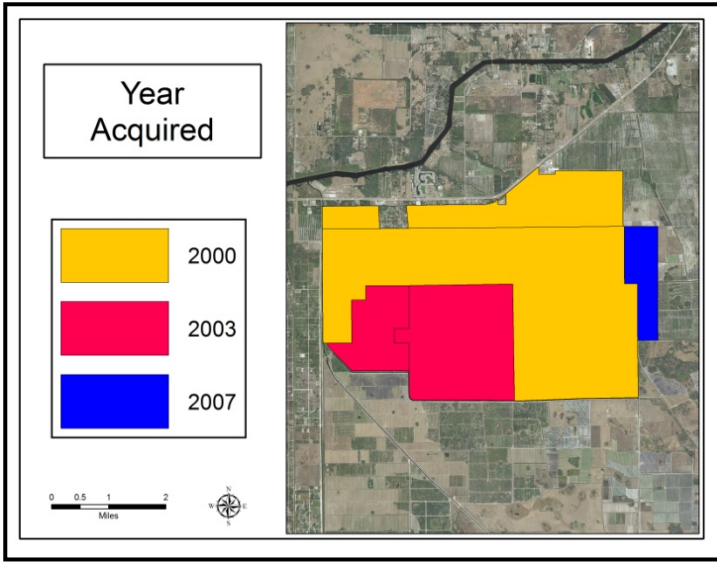
C-43 Reservoir, Photos



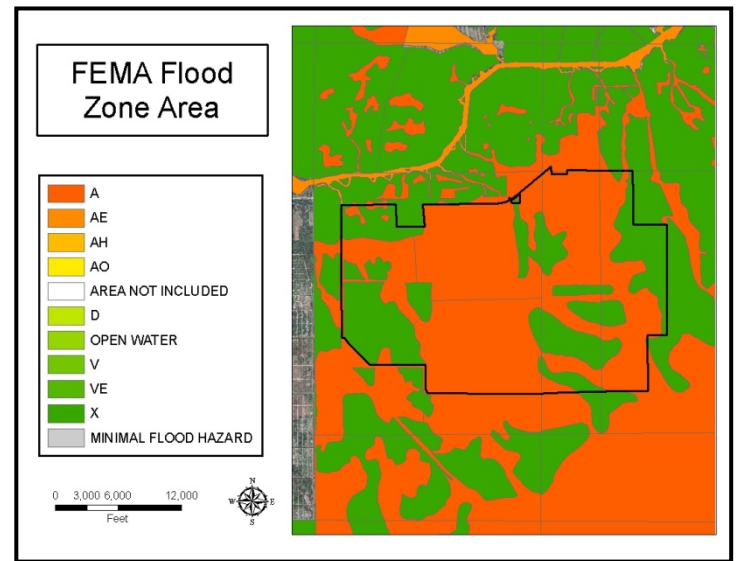
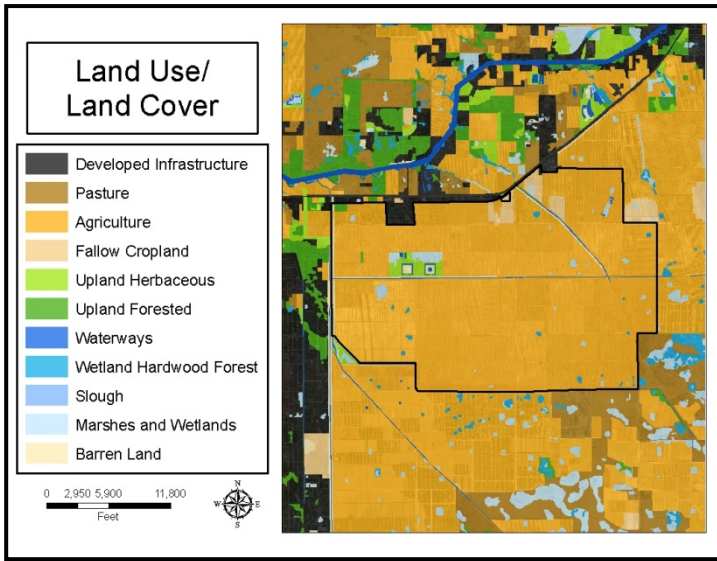
The test cells within the C-43 storage reservoir project footprint.



C-43 Reservoir: Land Acquisition



C-43 Reservoir: Land Character

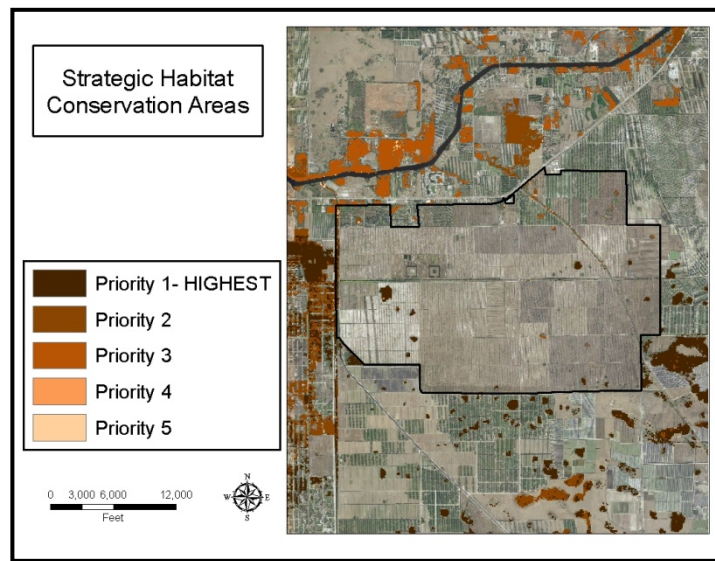
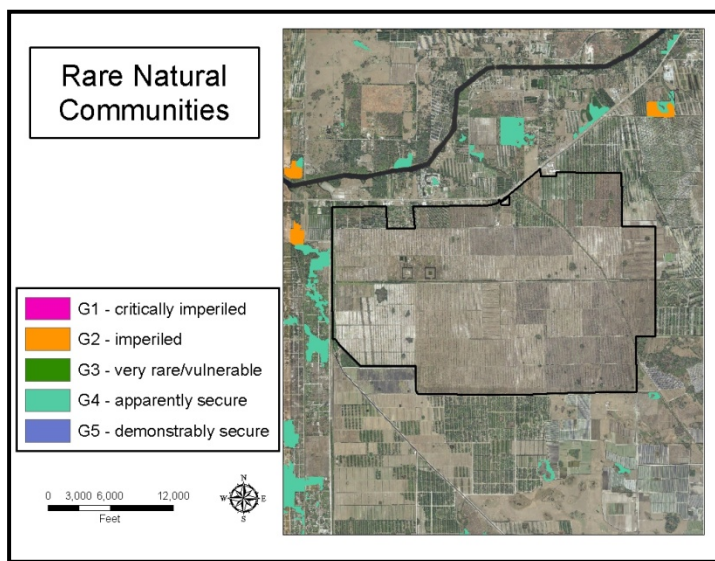
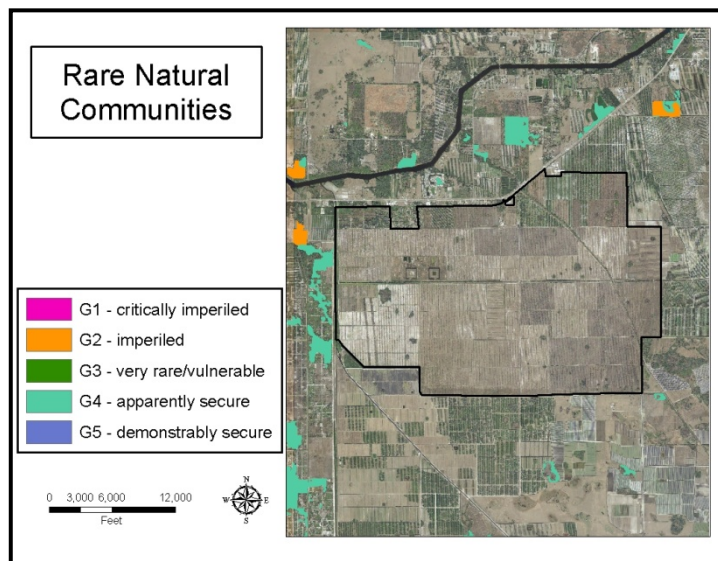
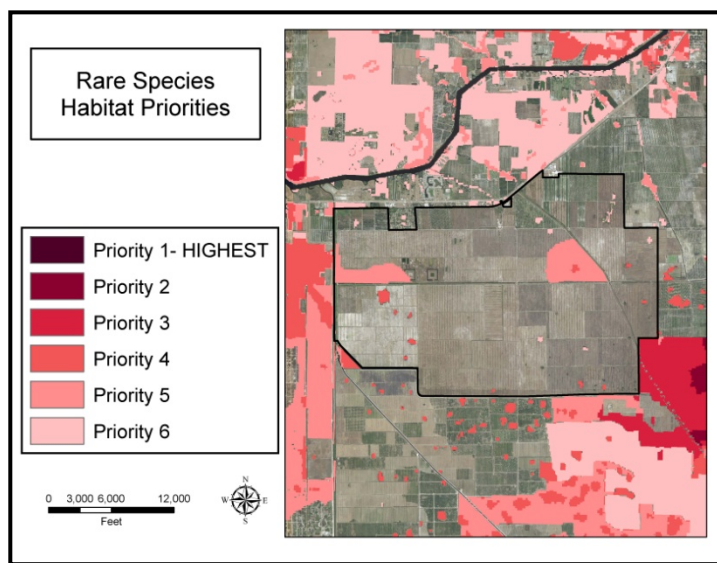


IMPORTANT DISCLAIMER: All maps in this document are a conceptual or planning tool only. The South Florida Water Management District does not guarantee or make any representation regarding the information contained herein. It is not self-executing or binding, and does not affect the interests of any persons or properties, including any present or future right or use of real property.

For more information on the data layers used in the assessment, please refer to the Land Assessment Study Process and Methodology document available here:

http://www.sfwmd.gov/portal/page/portal/xrepository/sfwmd_repository_pdf/land_assessment_study_process.pdf

C-43 Reservoir: Land Character (Continued)



IMPORTANT DISCLAIMER: All maps in this document are a conceptual or planning tool only. The South Florida Water Management District does not guarantee or make any representation regarding the information contained herein. It is not self-executing or binding, and does not affect the interests of any persons or properties, including any present or future right or use of real property.

For more information on the data layers used in the assessment, please refer to the Land Assessment Study Process and Methodology document available here: http://www.sfwmd.gov/portal/page/portal/xrepository/sfwmd_repository_pdf/land_assessment_study_process.pdf