

SUMICA (managed by Polk County)

Polk County	
Area within planning boundary footprint	4,009 acres
District fee-simple ownership	4,009 acres
Other public fee-simple ownership	0 acres
Area under other regulatory restriction (conservation easement, platted preserve area, etc.)	0 acres

Site Overview

SUMICA is named for the French mining and agricultural company (Societe Universelle Mining Industrie, Commerce et Agriculture) that formerly held timber rights to the land and established a company town to support their timber and turpentine trade. The District acquired the site in partnership with Polk County in 1999.

Core Mission Value

The site was acquired under the Save Our Rivers program to preserve a large locally significant wetland resource.

Other Resource Value

Natural communities include pine flatwoods, scrub, oak hammocks, prairies, marshes, and cypress and hardwood swamp. The site is an important wildlife corridor link between the Kissimmee Chain of Lakes and the Tiger Creek / Lake Wales Ridge State Forest system to the west.

Management Issues

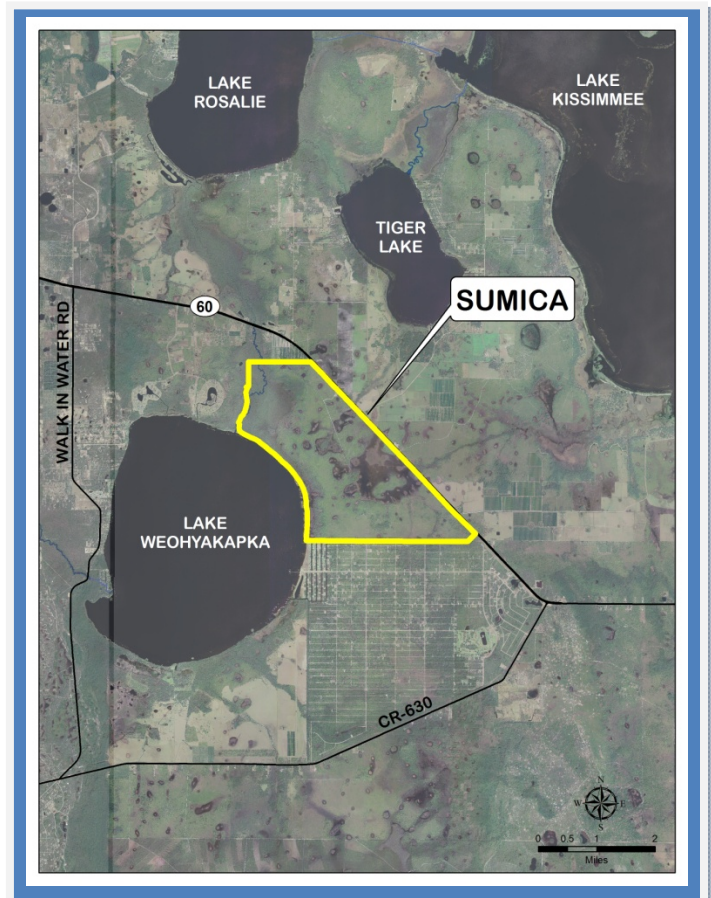
The area is operated and managed by the Polk County through an agreement with the District.

Public Use and Recreation value

The site is open for hiking, biking, horseback riding, and primitive camping. The County administers periodic hog hunts.

Assessment Units

None – the whole site is managed and operated by Polk County through their Environmental Lands Program.



SUMICA, managed by Polk County

Year Acquired: 1999

**Funding Sources: Land Acquisition Trust Fund/
Polk County**

SUMICA, photos

(Photos courtesy of Polk County's Environmental Lands Program)



A scenic overlook at SUMICA



A scrub community at SUMICA

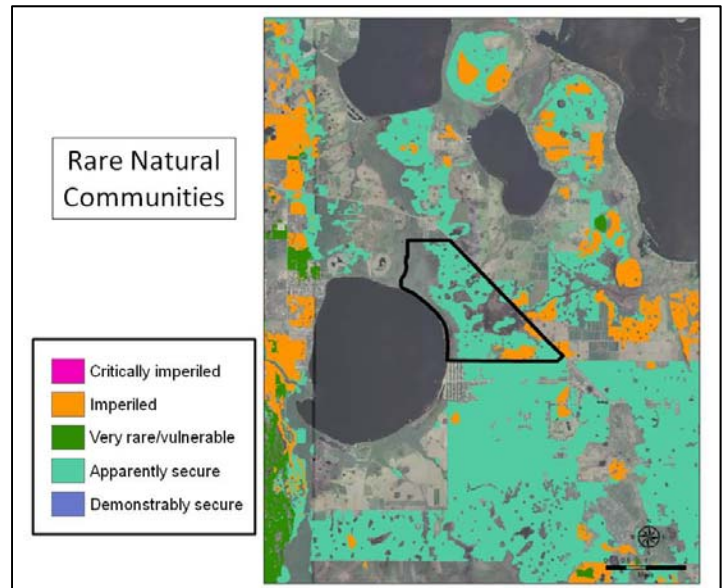
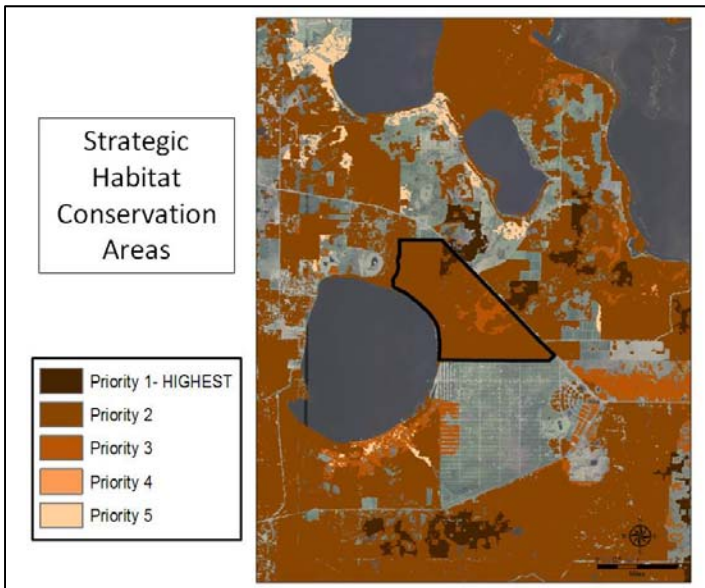
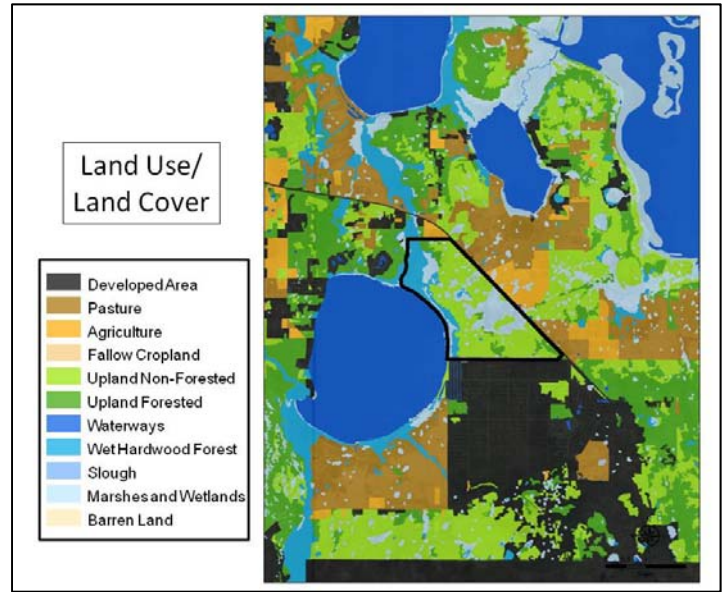
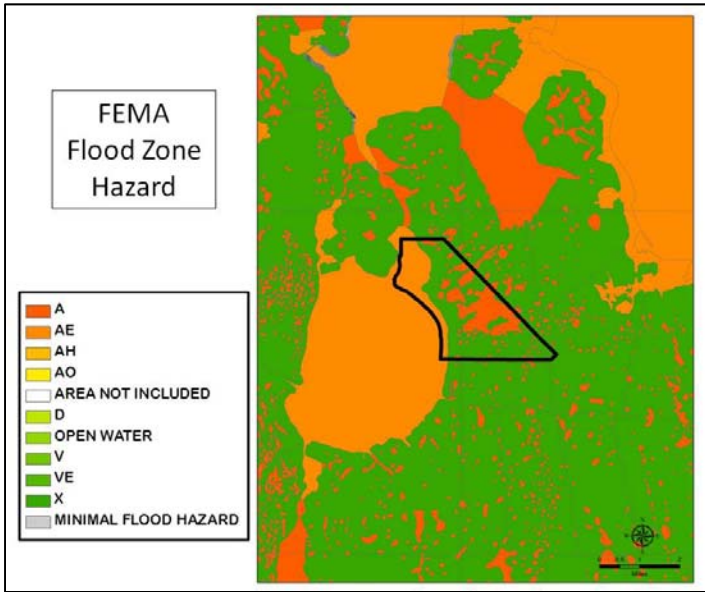


Dry prairie (foreground) and scrubby flatwood (background)



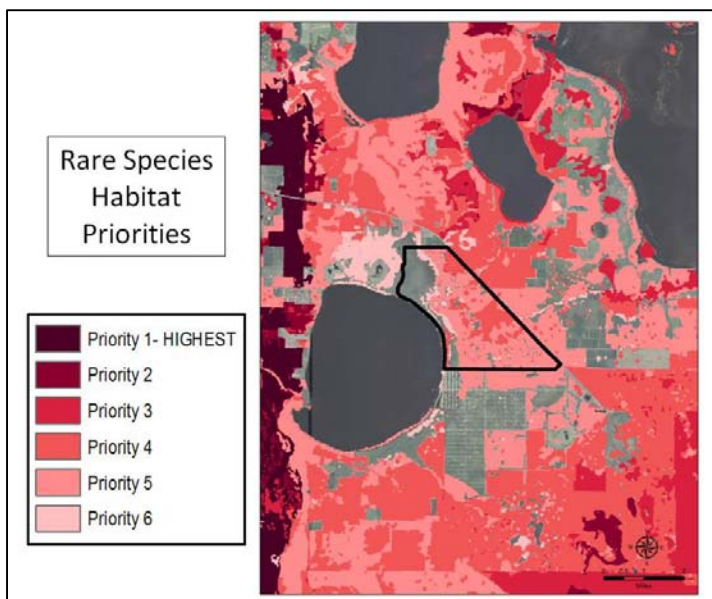
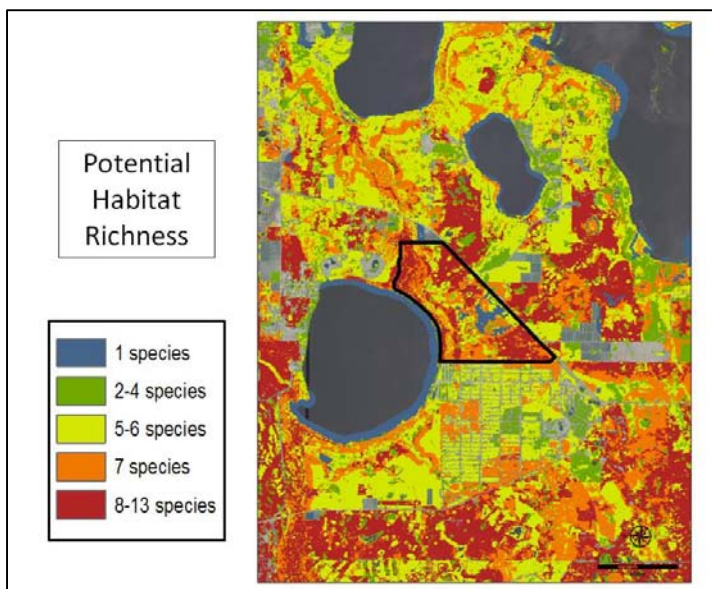
A wet prairie at SUMICA

SUMICA, Land Character



IMPORTANT DISCLAIMER: All maps in this document are a conceptual or planning tool only. The South Florida Water Management District does not guarantee or make any representation regarding the information contained herein. It is not self-executing or binding, and does not affect the interests of any persons or properties, including any present or future right or use of real property.

For more information on the data layers used in the assessment, please refer to the Land Assessment Study Process and Methodology document available here: http://www.sfwmd.gov/portal/page/portal/xrepository/sfwmd_repository_pdf/land_assessment_study_process.pdf



IMPORTANT DISCLAIMER: All maps in this document are a conceptual or planning tool only. The South Florida Water Management District does not guarantee or make any representation regarding the information contained herein. It is not self-executing or binding, and does not affect the interests of any persons or properties, including any present or future right or use of real property.

For more information on the data layers used in the assessment, please refer to the Land Assessment Study Process and Methodology document available here: http://www.sfwmd.gov/portal/page/portal/xrepository/sfwmd_repository_pdf/land_assessment_study_process.pdf