

**Unassociated Parcels**

Polk, Osceola, Glades, Hendry, and Okeechobee Counties

**Site Overview**

These are parcels that were not acquired for any restoration or water resource project. There are several such tracts at various points throughout the region

**Assessment Units**

**Undeveloped St. Cloud Field Station Parcel – ~20.2 Acres**

This property was acquired as a site on which a field station (a large regional maintenance and staging facility) was to be constructed, but was not used for that purpose. The field station facility was ultimately constructed at its present location on Old Canoe Creek Road. There are pine trees on the site, one of which has an eagle’s nest that has been utilized in recent nesting seasons.

**Camp Mack Triangle Parcel – ~3.2 Acres**

This area lies just off of the District’s access road that leads to the C-37 canal which connects Lake Hatchineha and Lake Kissimmee.

**Okeechobee County Boat Ramp – ~34 Acres**

This area is managed by Okeechobee County as a large boat ramp facility near the junction of the C-38 canal and Lake Okeechobee.

**Clewiston Boat Ramp – ~35.4 Acres**

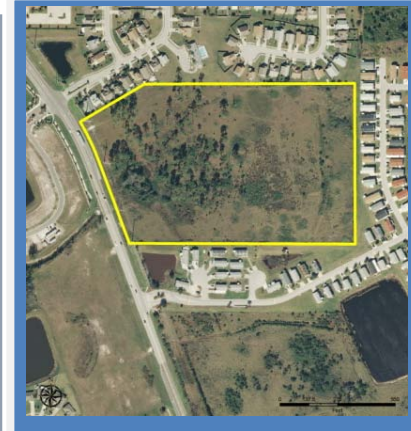
This area is managed by the city of Clewiston as a boat ramp facility which provides access to Lake Okeechobee.

**Sportsman’s Village – ~284.4 Acres**

This area is jointly-owned by the State and the District. A portion of the property is leased to Glades County for the operation of a boat ramp facility that provides access to Lake Okeechobee.



**Camp Mack Triangle Parcel. Purchased in 1990 with State funding.**



**St. Cloud Field Station Parcel. Purchased in 1994 with District funding.**



**The Okeechobee Boat Ramp. Acquired through District funds and donations from 1962 - 1974.**

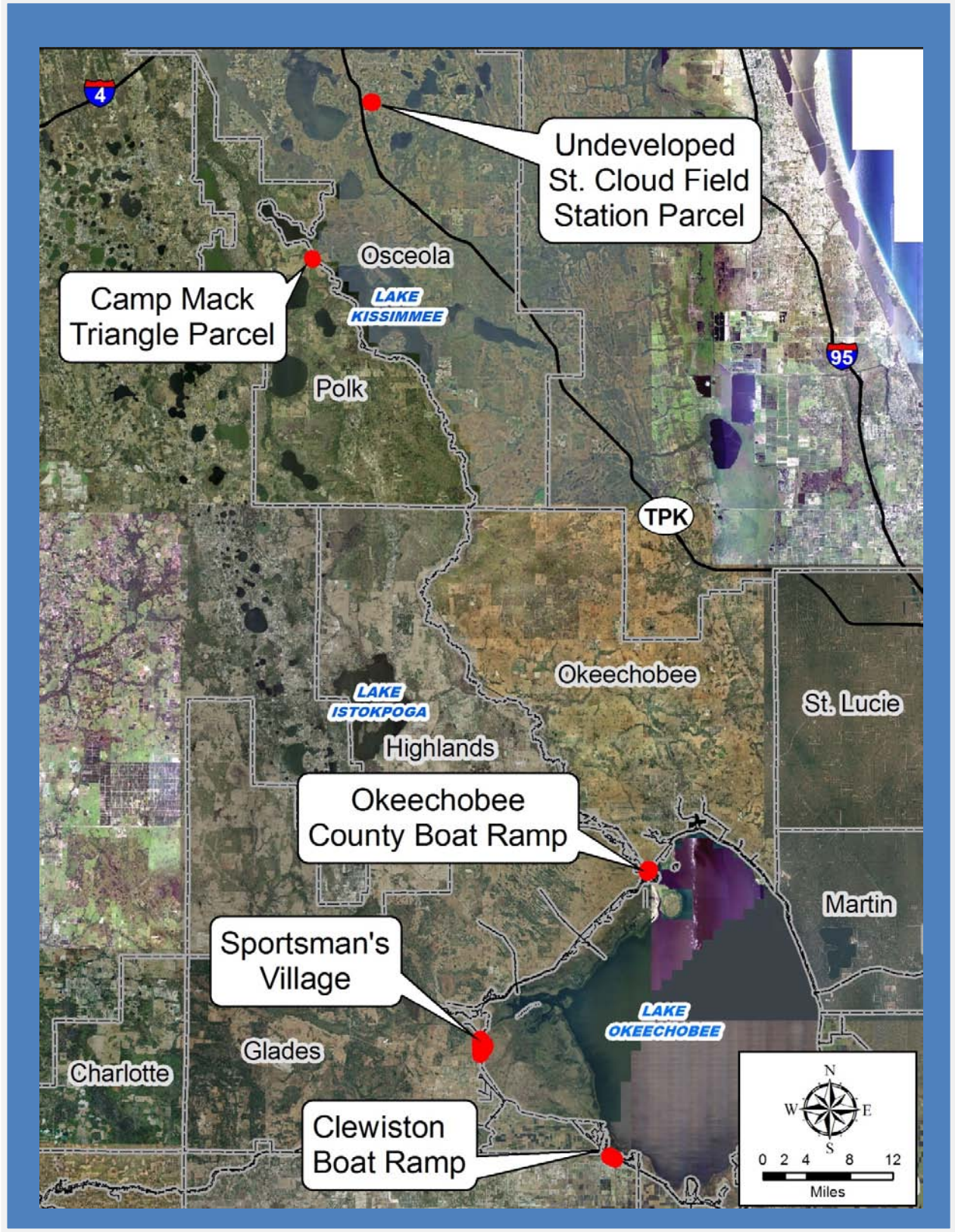


**Sportsman’s Village**



**The Clewiston Boat Ramp. Acquired through donation in 1973.**

**Unassociated Parcels Location Map**



IMPORTANT DISCLAIMER: All maps in this document are a conceptual or planning tool only. The South Florida Water Management District does not guarantee or make any representation regarding the information contained herein. It is not self-executing or binding, and does not affect the interests of any persons or properties, including any present or future right or use of real property.

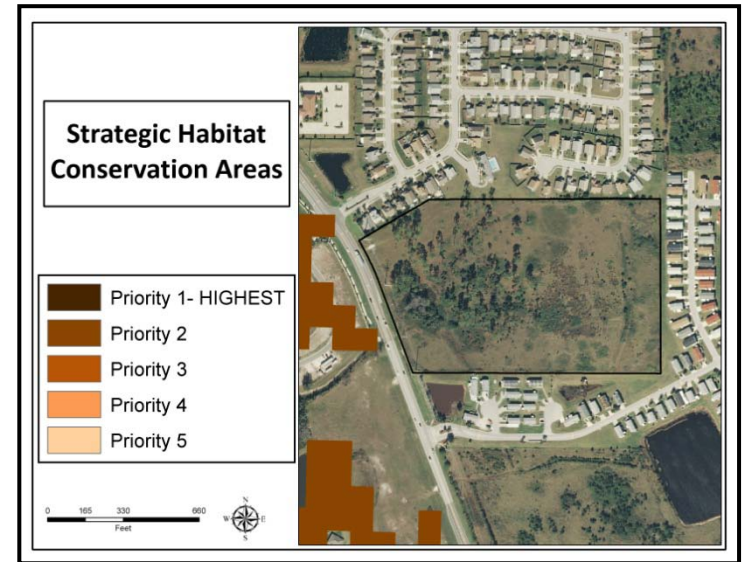
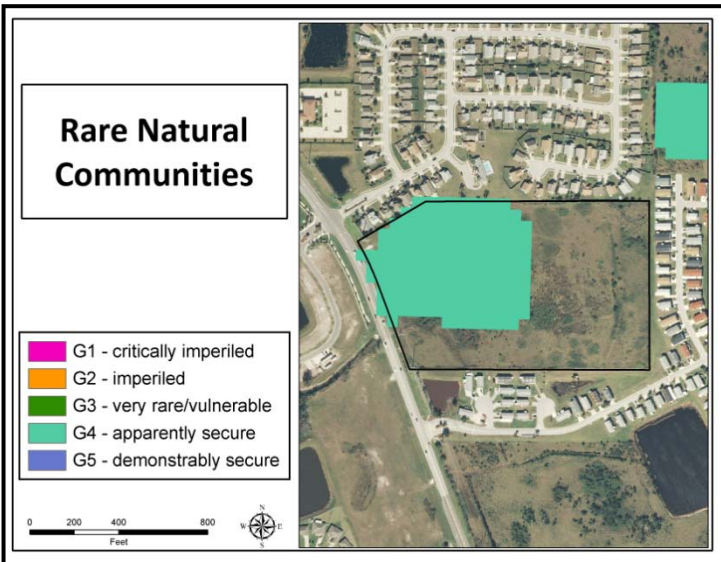
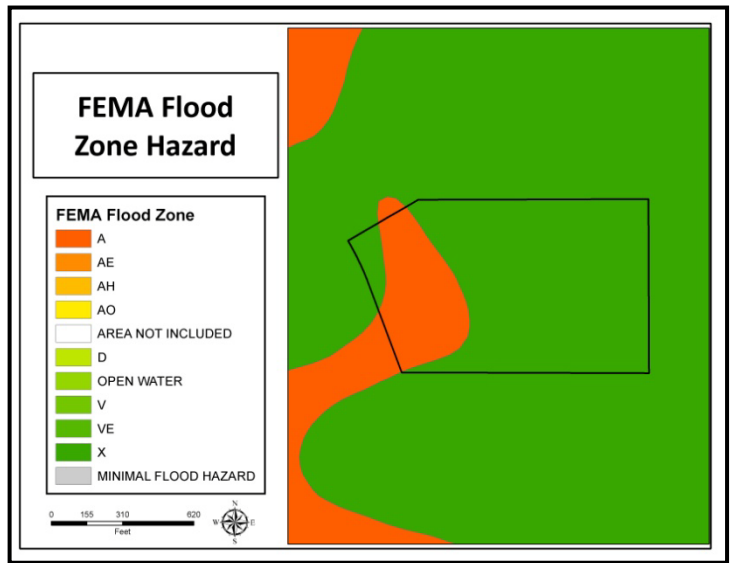
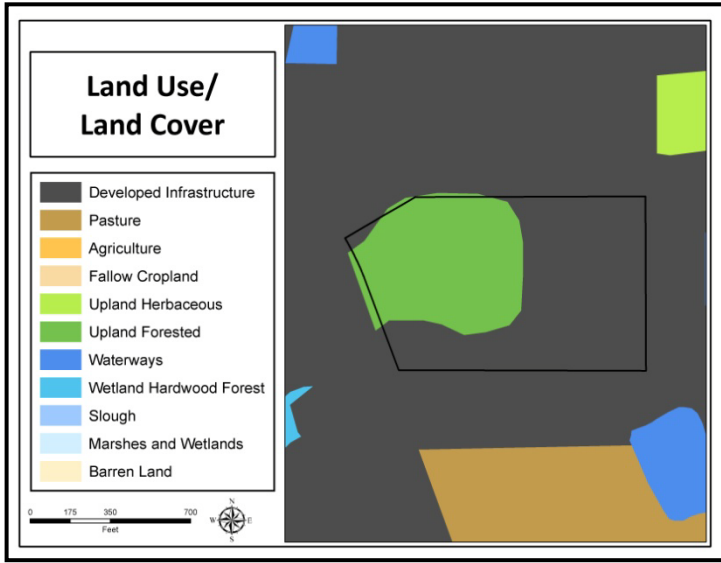
St. Cloud Field Station Parcel, Photos



The undeveloped St. Cloud field Station Parcel: north side (above) south side (below)



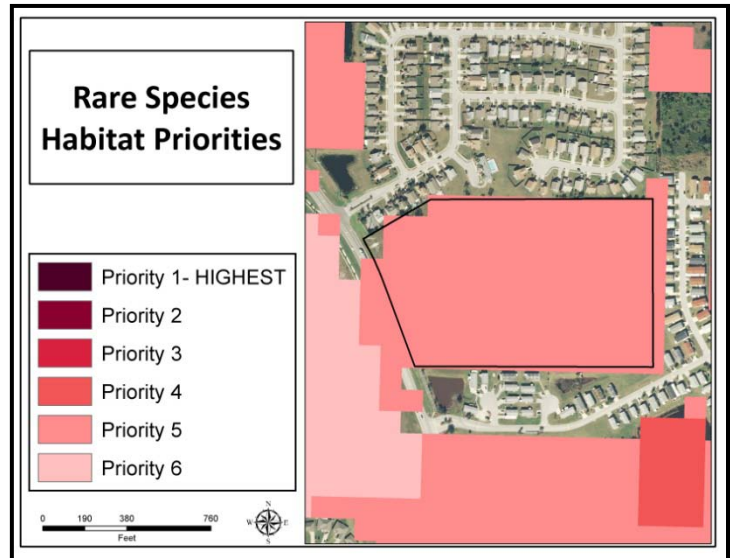
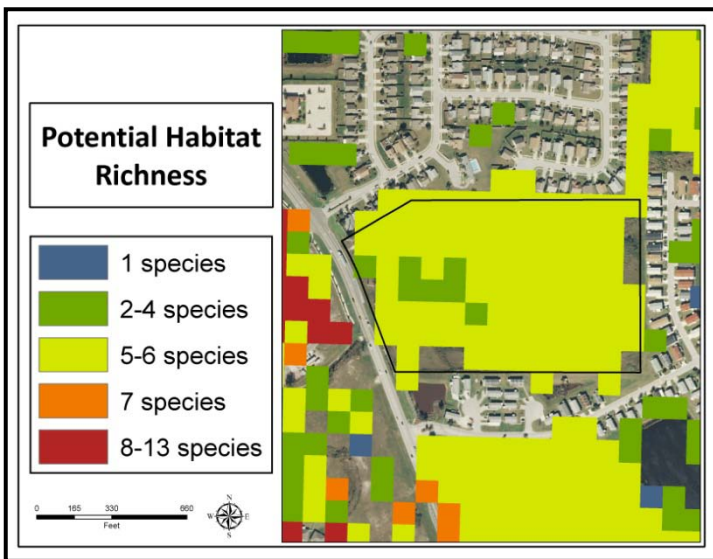
### St. Cloud Field Station Parcel: Land Character



**IMPORTANT DISCLAIMER:** All maps in this document are a conceptual or planning tool only. The South Florida Water Management District does not guarantee or make any representation regarding the information contained herein. It is not self-executing or binding, and does not affect the interests of any persons or properties, including any present or future right or use of real property.

For more information on the data layers used in the assessment, please refer to the Land Assessment Study Process and Methodology document available here: [http://www.sfwmd.gov/portal/page/portal/xrepository/sfwmd\\_repository\\_pdf/land\\_assessment\\_study\\_process.pdf](http://www.sfwmd.gov/portal/page/portal/xrepository/sfwmd_repository_pdf/land_assessment_study_process.pdf)

**St. Cloud Field Station Parcel: Land Character  
(Continued)**



**IMPORTANT DISCLAIMER:** All maps in this document are a conceptual or planning tool only. The South Florida Water Management District does not guarantee or make any representation regarding the information contained herein. It is not self-executing or binding, and does not affect the interests of any persons or properties, including any present or future right or use of real property.

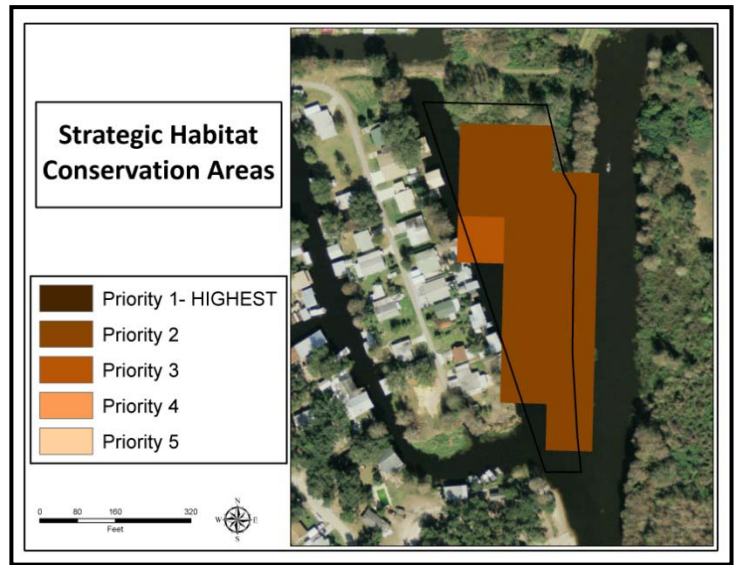
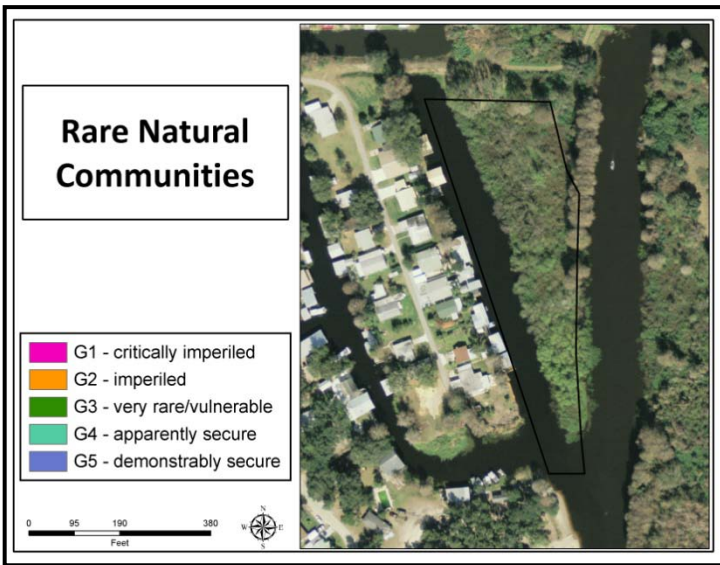
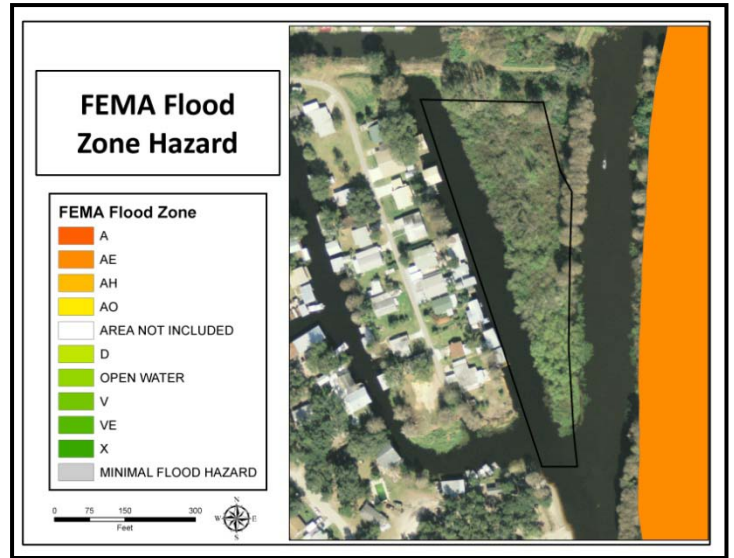
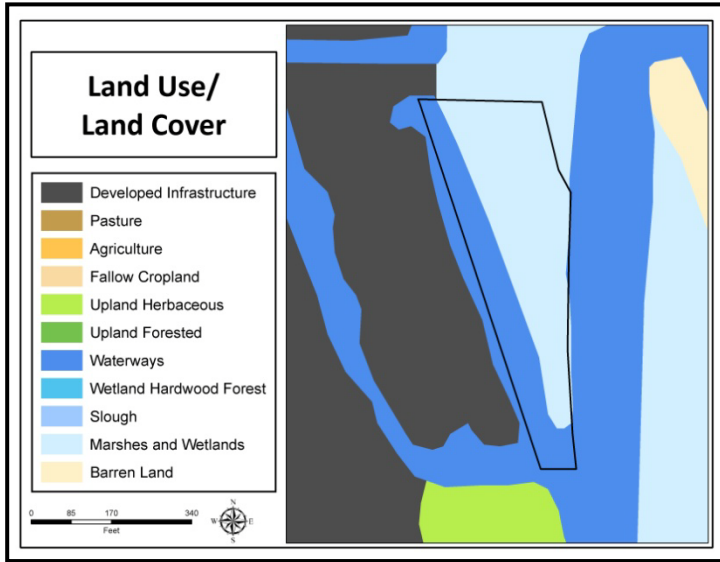
For more information on the data layers used in the assessment, please refer to the Land Assessment Study Process and Methodology document available here: [http://www.sfwmd.gov/portal/page/portal/xrepository/sfwmd\\_repository\\_pdf/land\\_assessment\\_study\\_process.pdf](http://www.sfwmd.gov/portal/page/portal/xrepository/sfwmd_repository_pdf/land_assessment_study_process.pdf)

**Camp Mack Triangle, Photos**



**Looking south towards the Camp Mack Triangle Parcel**

### Camp Mack Triangle: Land Character



**IMPORTANT DISCLAIMER:** All maps in this document are a conceptual or planning tool only. The South Florida Water Management District does not guarantee or make any representation regarding the information contained herein. It is not self-executing or binding, and does not affect the interests of any persons or properties, including any present or future right or use of real property.

For more information on the data layers used in the assessment, please refer to the Land Assessment Study Process and Methodology document available here: [http://www.sfwmd.gov/portal/page/portal/xrepository/sfwmd\\_repository\\_pdf/land\\_assessment\\_study\\_process.pdf](http://www.sfwmd.gov/portal/page/portal/xrepository/sfwmd_repository_pdf/land_assessment_study_process.pdf)

**Camp Mack Triangle: Land Character  
(Continued)**



**IMPORTANT DISCLAIMER:** All maps in this document are a conceptual or planning tool only. The South Florida Water Management District does not guarantee or make any representation regarding the information contained herein. It is not self-executing or binding, and does not affect the interests of any persons or properties, including any present or future right or use of real property.

For more information on the data layers used in the assessment, please refer to the Land Assessment Study Process and Methodology document available here: [http://www.sfwmd.gov/portal/page/portal/xrepository/sfwmd\\_repository\\_pdf/land\\_assessment\\_study\\_process.pdf](http://www.sfwmd.gov/portal/page/portal/xrepository/sfwmd_repository_pdf/land_assessment_study_process.pdf)



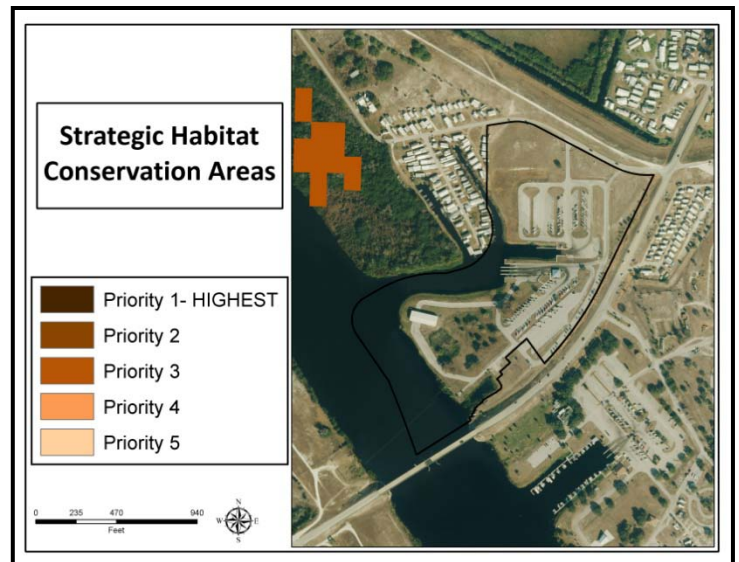
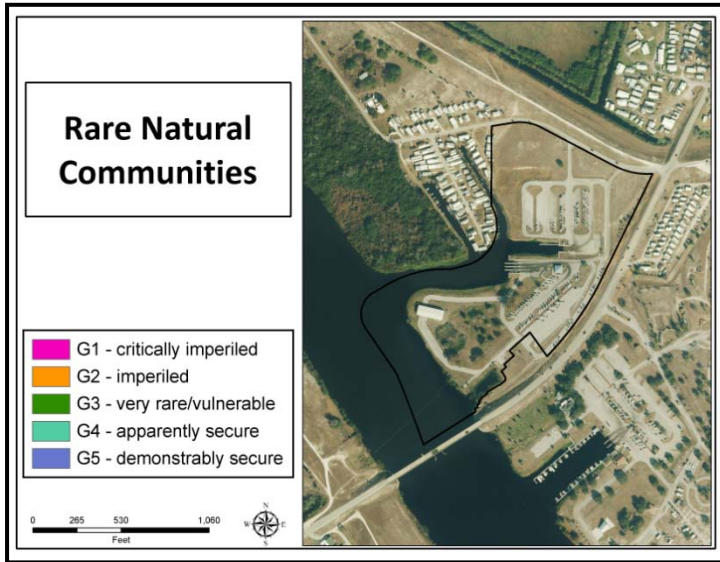
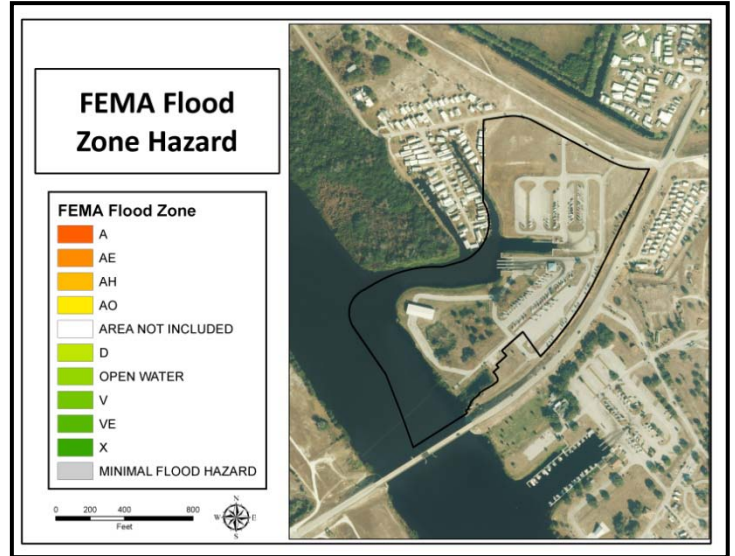
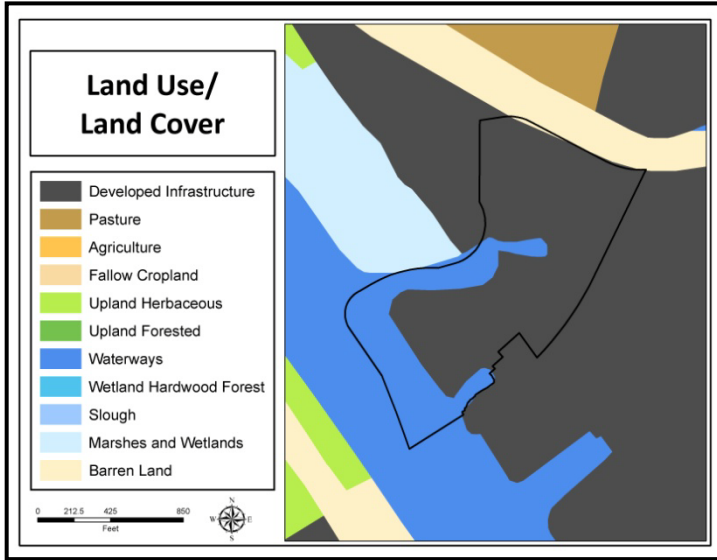
Okeechobee County Boat Ramp, Photos



The Okeechobee County boat ramp facility



## Okeechobee County Boat Ramp: Land Character

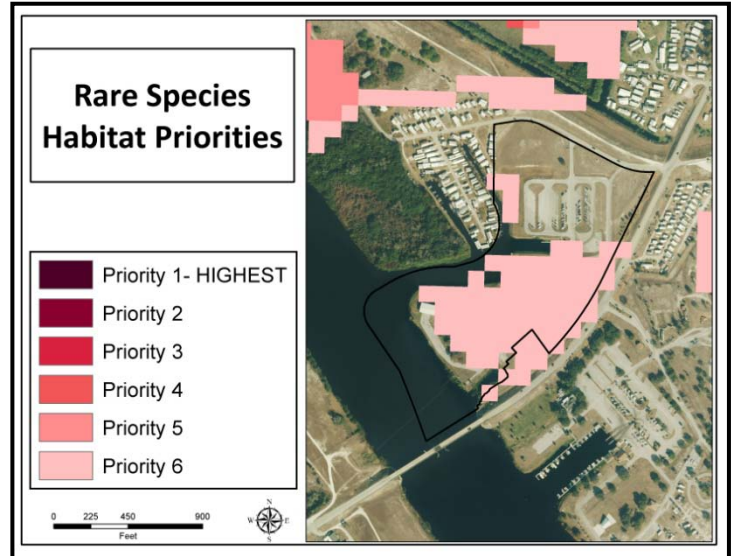
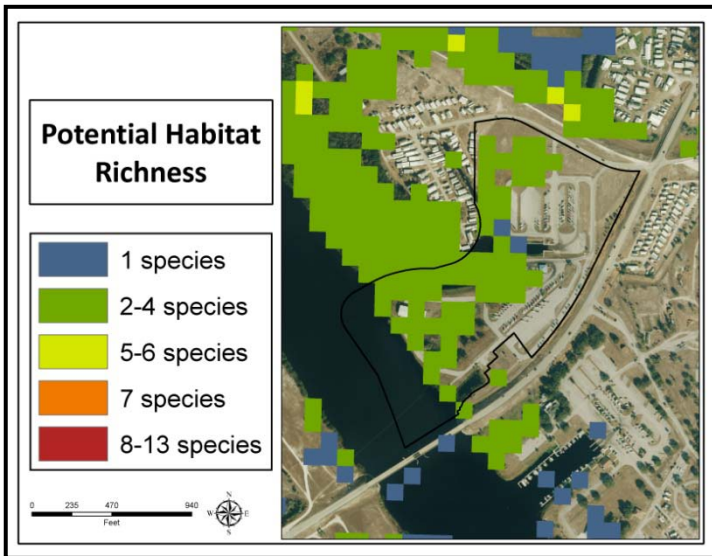


**IMPORTANT DISCLAIMER:** All maps in this document are a conceptual or planning tool only. The South Florida Water Management District does not guarantee or make any representation regarding the information contained herein. It is not self-executing or binding, and does not affect the interests of any persons or properties, including any present or future right or use of real property.

For more information on the data layers used in the assessment, please refer to the Land Assessment Study Process and Methodology document available here:

[http://www.sfwmd.gov/portal/page/portal/xrepository/sfwmd\\_repository\\_pdf/land\\_assessment\\_study\\_process.pdf](http://www.sfwmd.gov/portal/page/portal/xrepository/sfwmd_repository_pdf/land_assessment_study_process.pdf)

Okeechobee County Boat Ramp: Land Character (Continued)

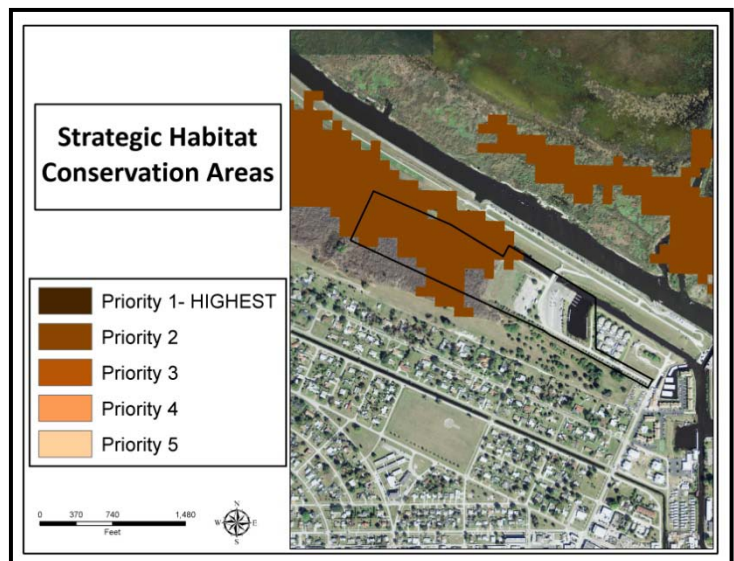
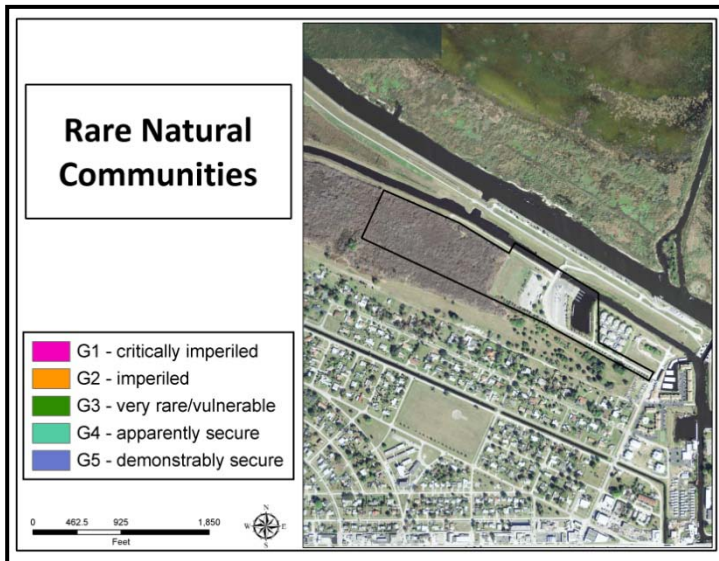
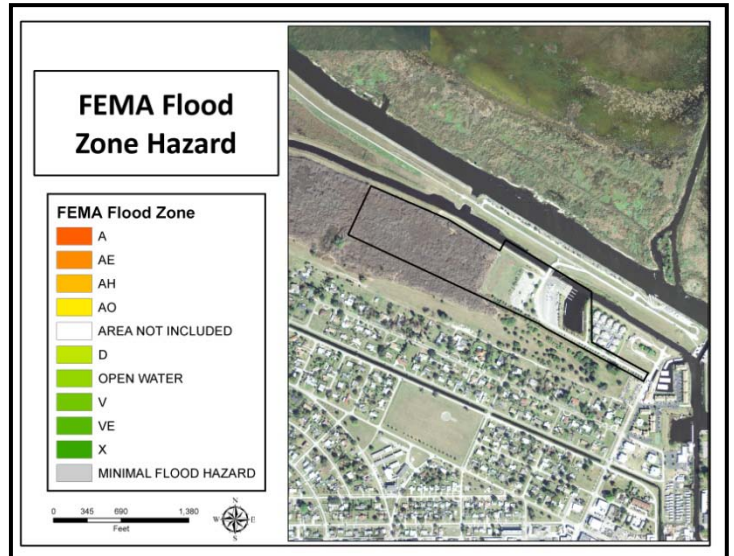
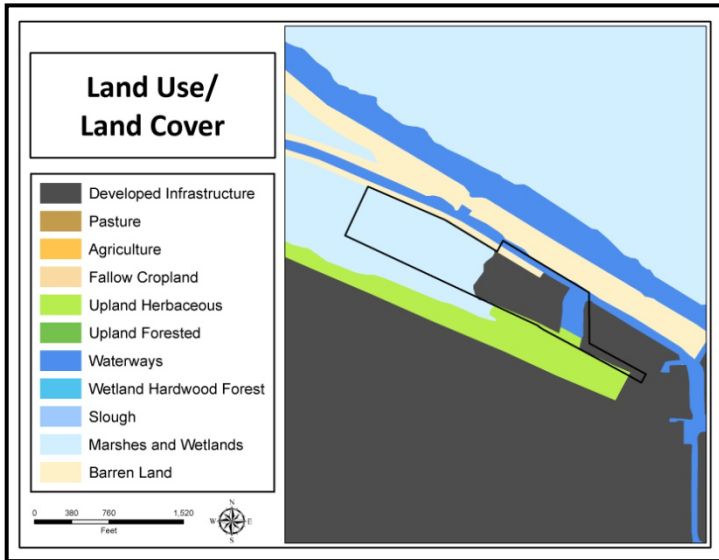


**Clewiston Boat Ramp, Photos**



**Clewiston boat ramp facility**

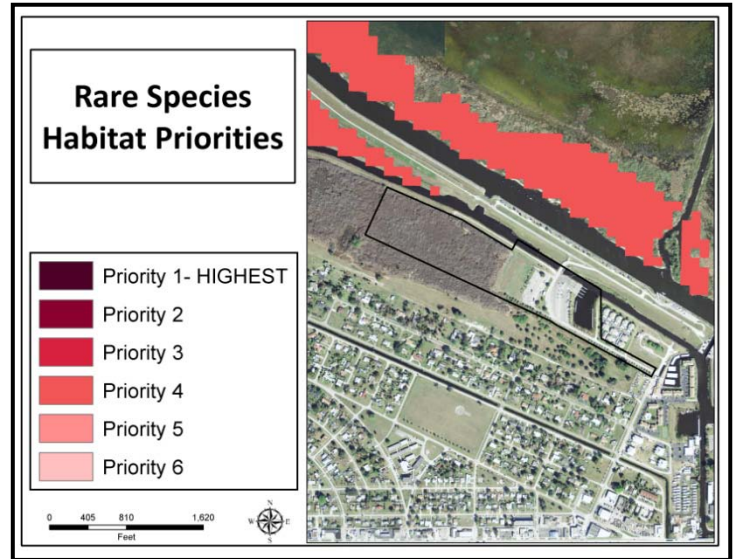
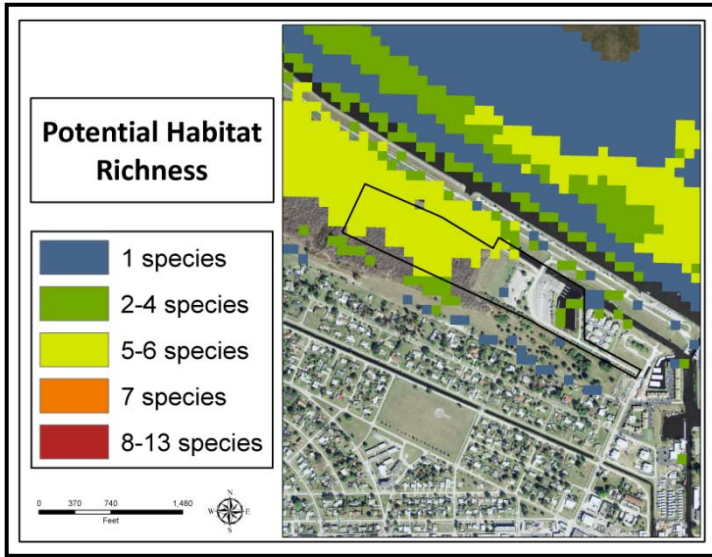
### Clewiston Boat Ramp: Land Character



**IMPORTANT DISCLAIMER:** All maps in this document are a conceptual or planning tool only. The South Florida Water Management District does not guarantee or make any representation regarding the information contained herein. It is not self-executing or binding, and does not affect the interests of any persons or properties, including any present or future right or use of real property.

For more information on the data layers used in the assessment, please refer to the Land Assessment Study Process and Methodology document available here: [http://www.sfwmd.gov/portal/page/portal/xrepository/sfwmd\\_repository\\_pdf/land\\_assessment\\_study\\_process.pdf](http://www.sfwmd.gov/portal/page/portal/xrepository/sfwmd_repository_pdf/land_assessment_study_process.pdf)

**Clewiston Boat Ramp: Land Character  
(Continued)**



**IMPORTANT DISCLAIMER:** All maps in this document are a conceptual or planning tool only. The South Florida Water Management District does not guarantee or make any representation regarding the information contained herein. It is not self-executing or binding, and does not affect the interests of any persons or properties, including any present or future right or use of real property.

For more information on the data layers used in the assessment, please refer to the Land Assessment Study Process and Methodology document available here:

[http://www.sfwmd.gov/portal/page/portal/xrepository/sfwmd\\_repository\\_pdf/land\\_assessment\\_study\\_process.pdf](http://www.sfwmd.gov/portal/page/portal/xrepository/sfwmd_repository_pdf/land_assessment_study_process.pdf)

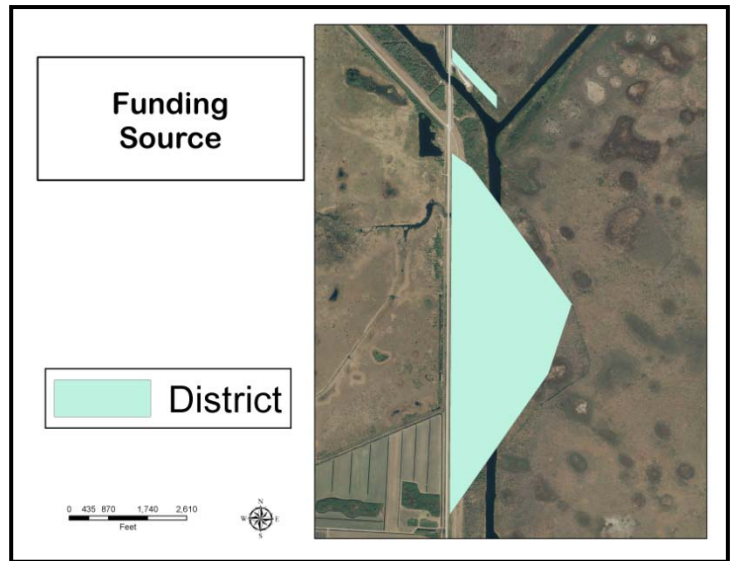
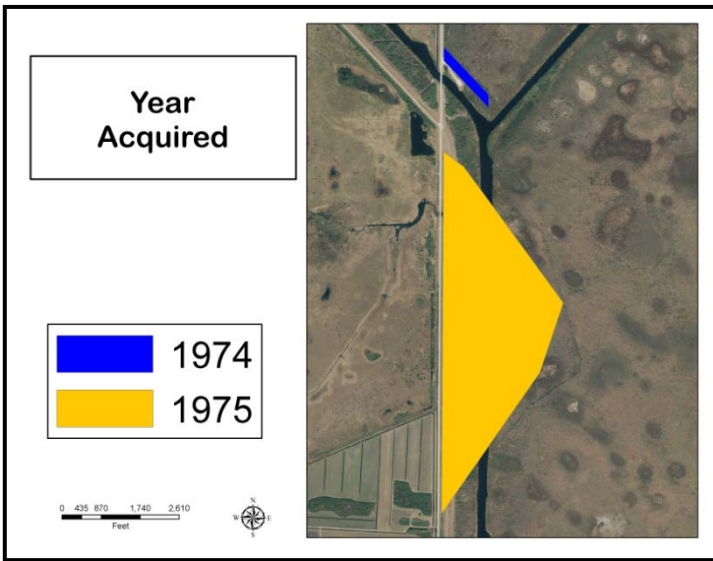
Sportsman's Village, Photos



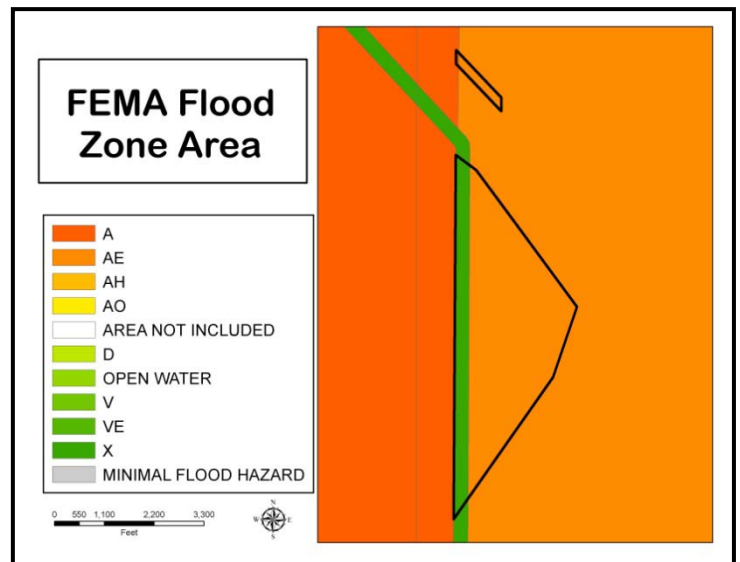
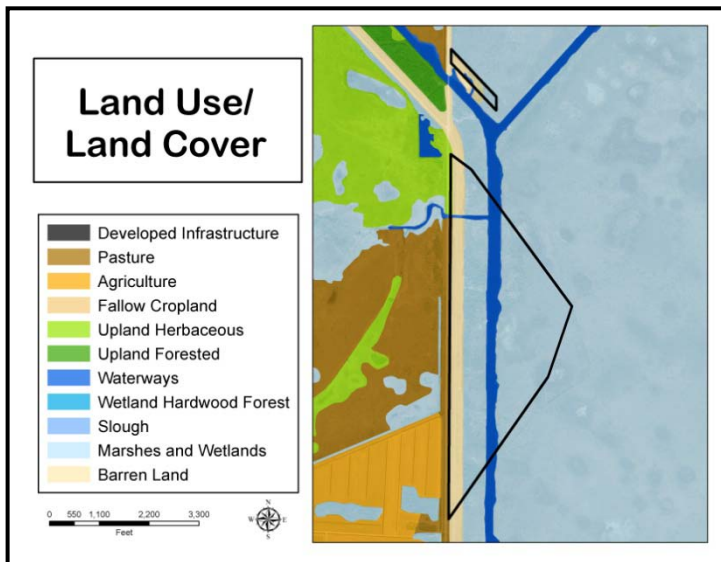
The Sportsman's Village boat ramp facility



### Sportsman's Village: Land Acquisition



### Sportsman's Village: Land Character





**Sportsman's Village: Land Character  
(Continued)**

