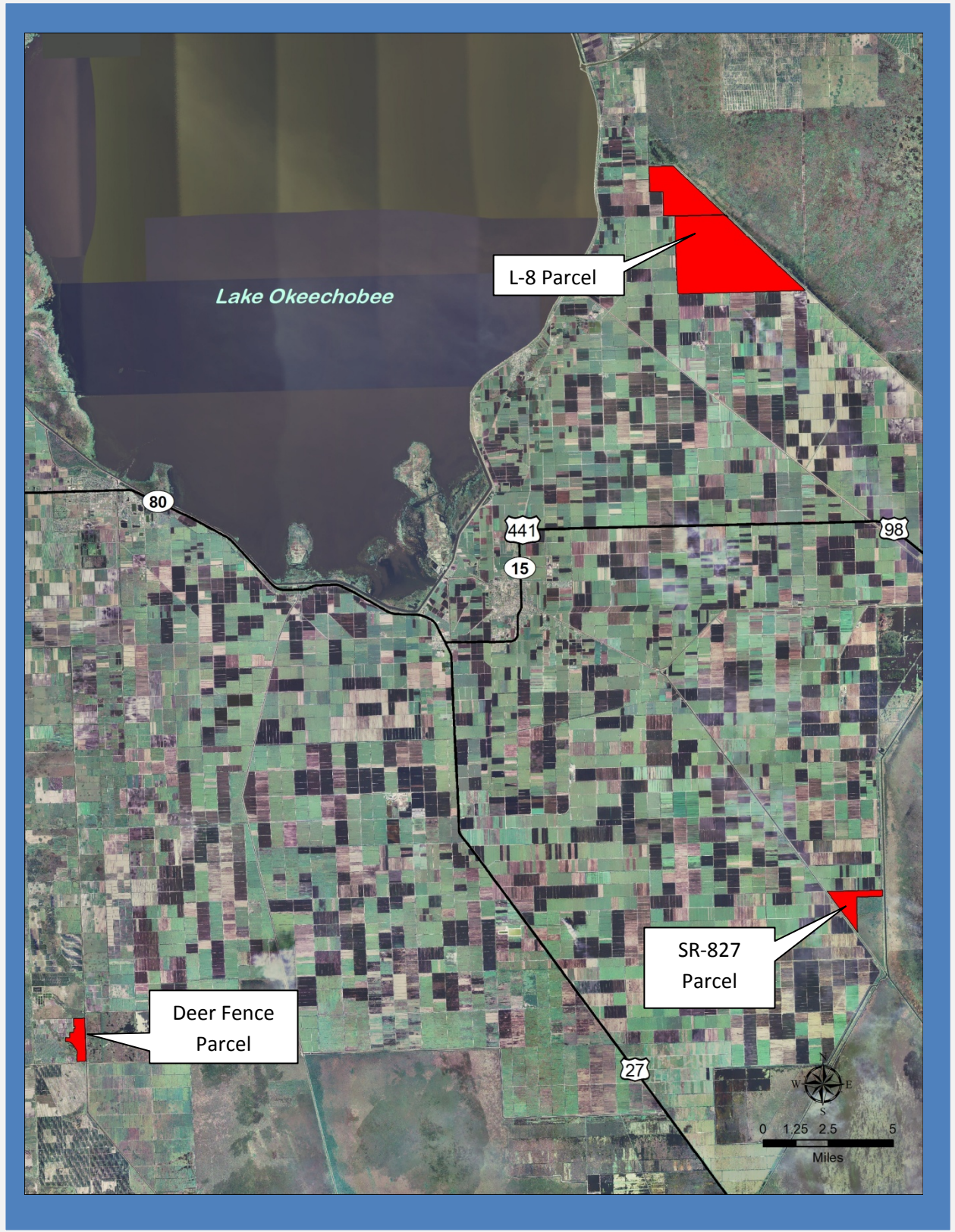


**Unassociated Parcels Location Map**



**IMPORTANT DISCLAIMER:** All maps in this document are a conceptual or planning tool only. The South Florida Water Management District does not guarantee or make any representation regarding the information contained herein. It is not self-executing or binding, and does not affect the interests of any persons or properties, including any present or future right or use of real property.

**Unassociated Parcels**

Palm Beach and Hendry Counties

**Site Overview**

These are parcels within the Everglades Agricultural Area that are not a part of a water resource development project.

**Assessment Units**

**L-8 Parcel – ~ 8,712 Acres**

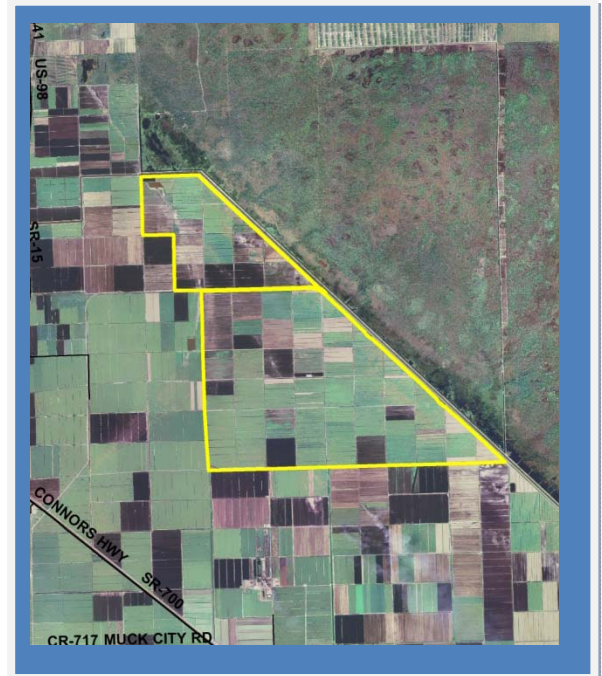
Purchased in 2010 with District funding, this is an area under sugarcane production, adjacent to the L-8 Levee.

**SR 827 Parcel. – ~ 800 Acres**

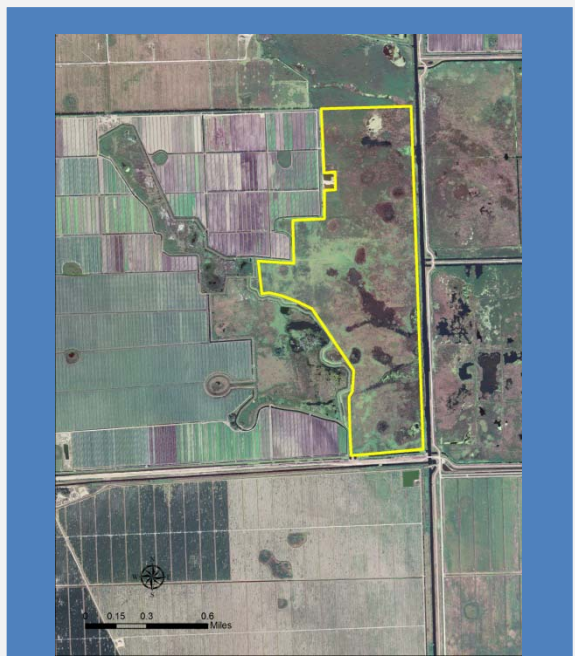
Purchased in 1999 with District, Federal, and Preservation 200 funds, this property lies adjacent to the “Snail Farm” area of the Loxahatchee National Wildlife refuge. It is under active sugarcane production.

**Deer Fence Parcel – ~ 500.43 Acres**

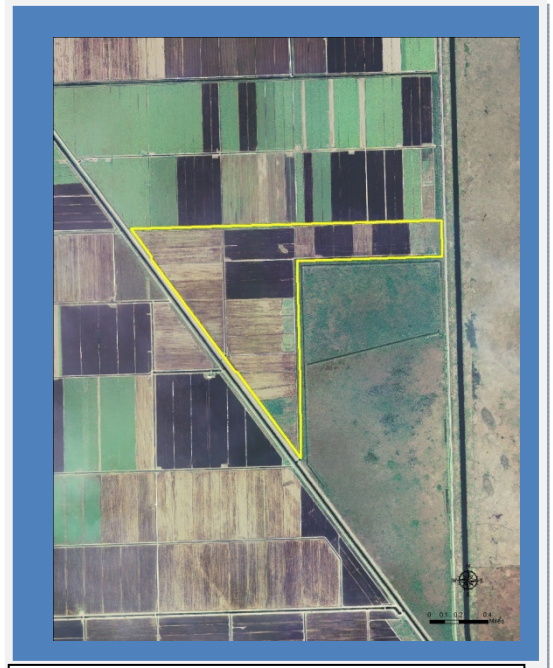
Purchased in 2003 with District funding, this property is on the north side of Deer Fence Road and west of Stormwater Treatment Area 5. It was formerly used for cattle grazing. It was acquired to accommodate the seepage associated with the Stormwater Treatment Area.



L-8 Parcel



Deer Fence Parcel



SR 827 Parcel

IMPORTANT DISCLAIMER: All maps in this document are a conceptual or planning tool only. The South Florida Water Management District does not guarantee or make any representation regarding the information contained herein. It is not self-executing or binding, and does not affect the interests of any persons or properties, including any present or future right or use of real property.

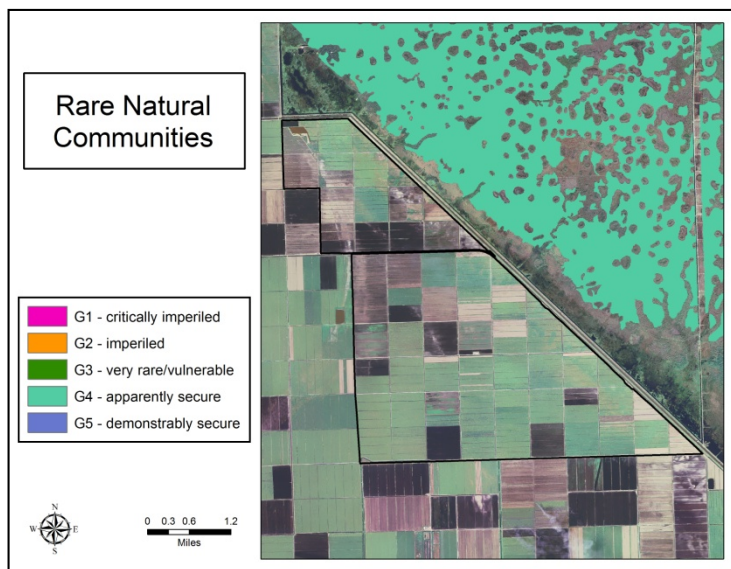
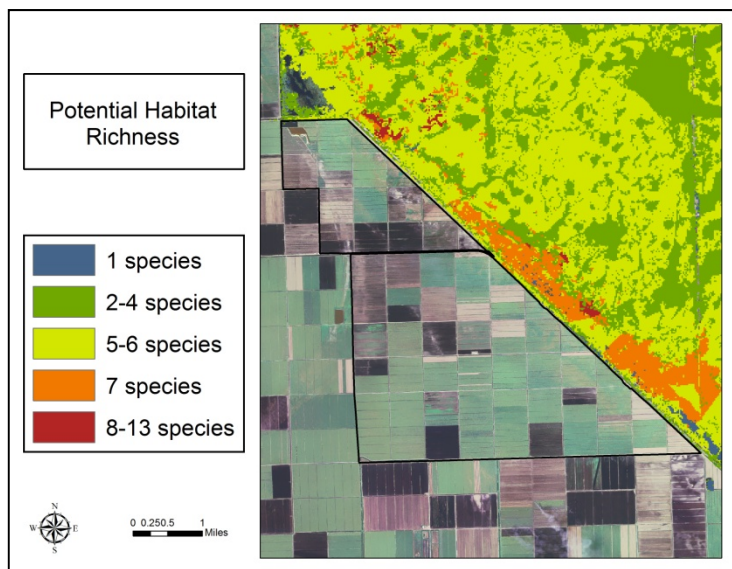
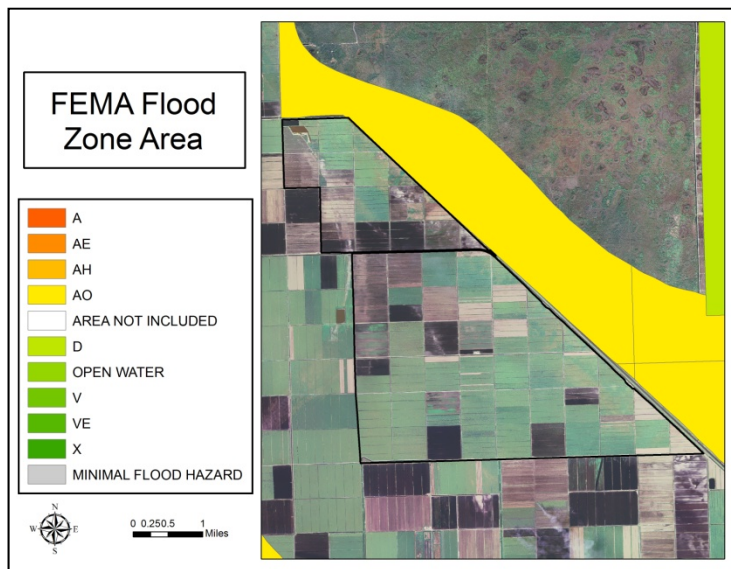
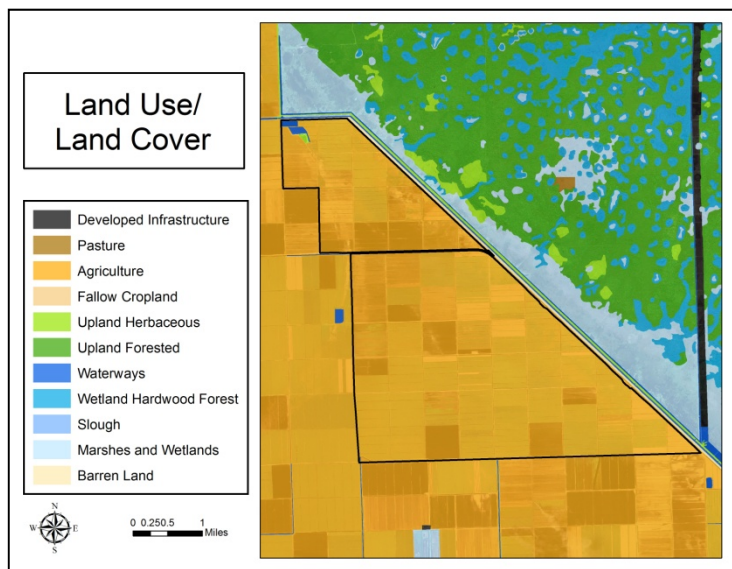
**L-8 Parcel, Photo**



The L-8 Parcel, a large area in sugarcane production.



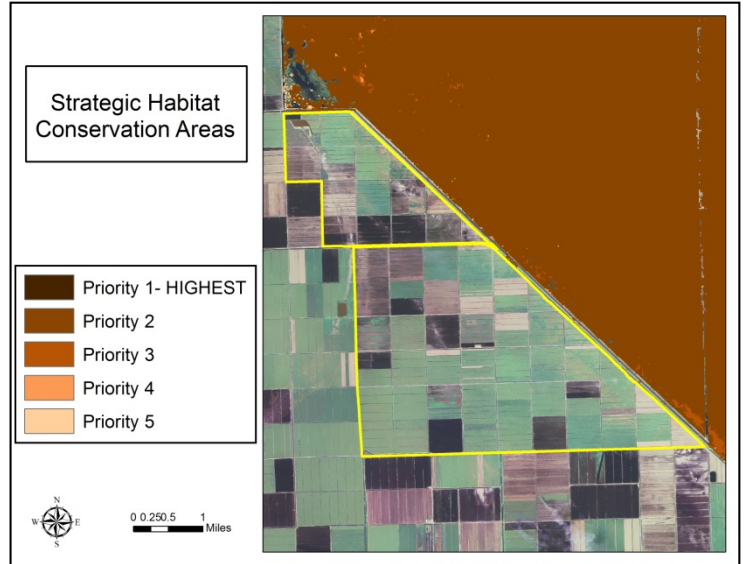
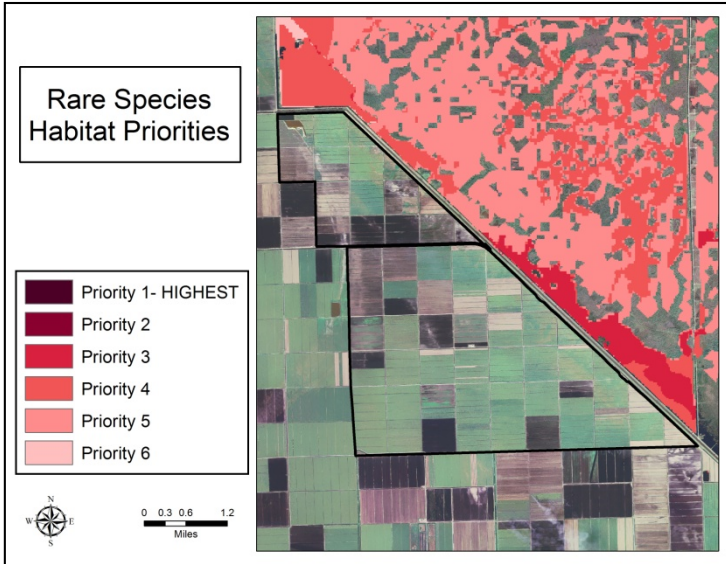
**L-8 Parcel: Land Character**



**IMPORTANT DISCLAIMER:** All maps in this document are a conceptual or planning tool only. The South Florida Water Management District does not guarantee or make any representation regarding the information contained herein. It is not self-executing or binding, and does not affect the interests of any persons or properties, including any present or future right or use of real property.

For more information on the data layers used in the assessment, please refer to the Land Assessment Study Process and Methodology document available here: [http://www.sfwmd.gov/portal/page/portal/xrepository/sfwmd\\_repository\\_pdf/land\\_assessment\\_study\\_process.pdf](http://www.sfwmd.gov/portal/page/portal/xrepository/sfwmd_repository_pdf/land_assessment_study_process.pdf)

**L-8 Parcel: Land Character (Continued)**



**IMPORTANT DISCLAIMER:** All maps in this document are a conceptual or planning tool only. The South Florida Water Management District does not guarantee or make any representation regarding the information contained herein. It is not self-executing or binding, and does not affect the interests of any persons or properties, including any present or future right or use of real property.

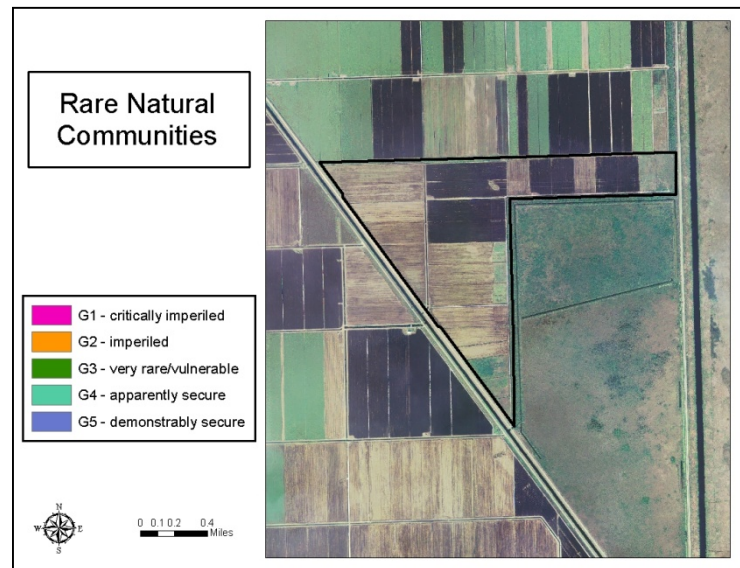
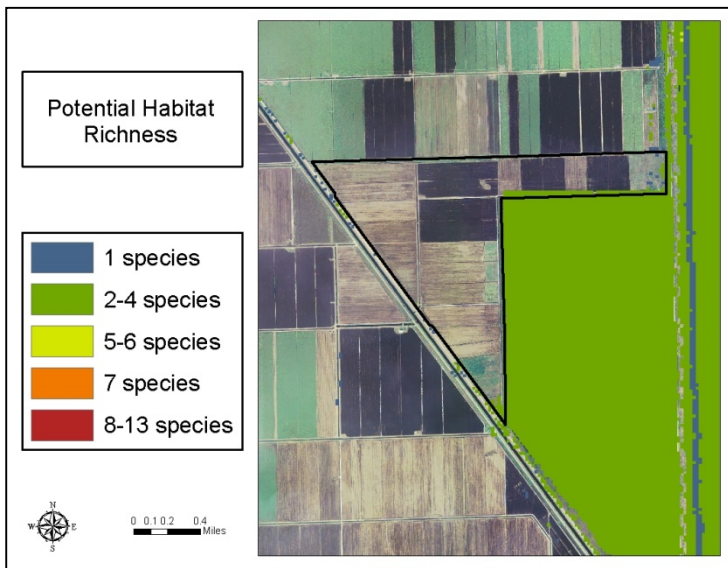
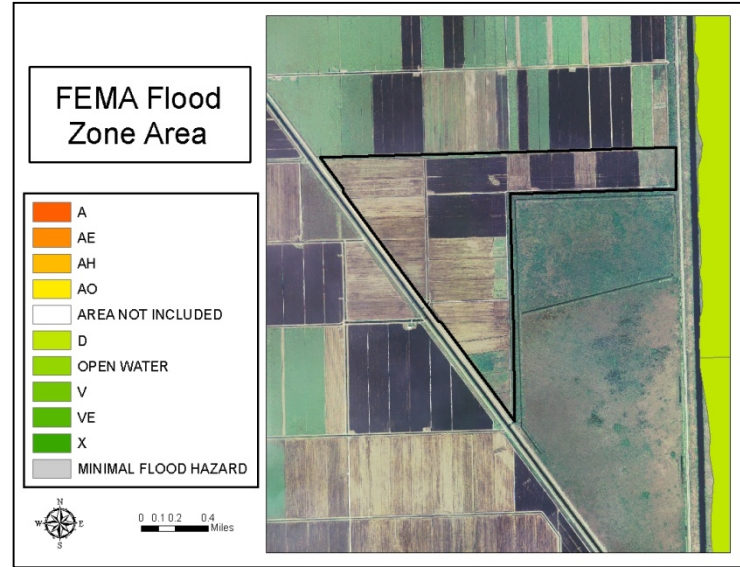
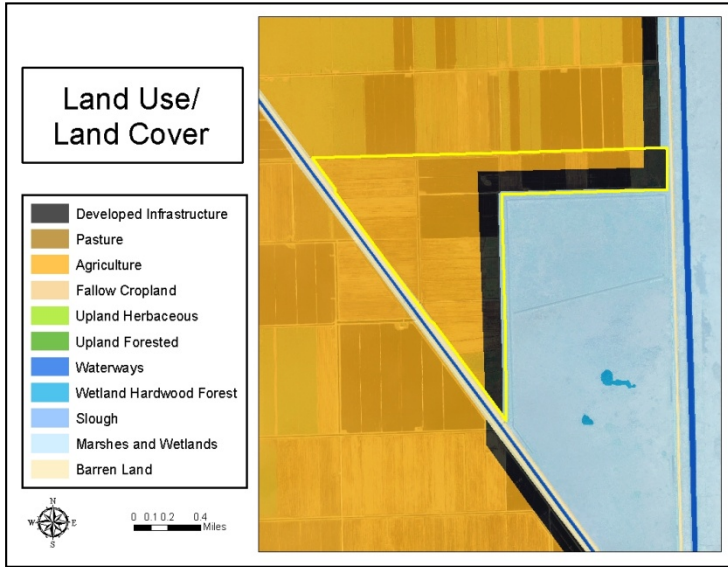
For more information on the data layers used in the assessment, please refer to the Land Assessment Study Process and Methodology document available here: [http://www.sfwmd.gov/portal/page/portal/xrepository/sfwmd\\_repository\\_pdf/land\\_assessment\\_study\\_process.pdf](http://www.sfwmd.gov/portal/page/portal/xrepository/sfwmd_repository_pdf/land_assessment_study_process.pdf)

SR 827 Parcel, Photo



The SR 827 parcel is an area of sugarcane production

SR 827 Parcel: Land Character

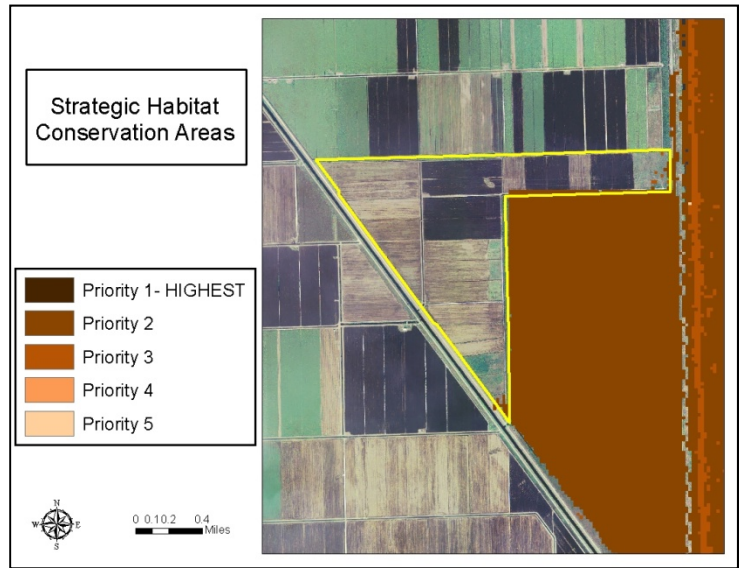


**IMPORTANT DISCLAIMER:** All maps in this document are a conceptual or planning tool only. The South Florida Water Management District does not guarantee or make any representation regarding the information contained herein. It is not self-executing or binding, and does not affect the interests of any persons or properties, including any present or future right or use of real property.

For more information on the data layers used in the assessment, please refer to the Land Assessment Study Process and Methodology document available here:

[http://www.sfwmd.gov/portal/page/portal/xrepository/sfwmd\\_repository\\_pdf/land\\_assessment\\_study\\_process.pdf](http://www.sfwmd.gov/portal/page/portal/xrepository/sfwmd_repository_pdf/land_assessment_study_process.pdf)

SR 827 Parcel: Land Character (Continued)



**IMPORTANT DISCLAIMER:** All maps in this document are a conceptual or planning tool only. The South Florida Water Management District does not guarantee or make any representation regarding the information contained herein. It is not self-executing or binding, and does not affect the interests of any persons or properties, including any present or future right or use of real property.

For more information on the data layers used in the assessment, please refer to the Land Assessment Study Process and Methodology document available here: [http://www.sfwmd.gov/portal/page/portal/xrepository/sfwmd\\_repository\\_pdf/land\\_assessment\\_study\\_process.pdf](http://www.sfwmd.gov/portal/page/portal/xrepository/sfwmd_repository_pdf/land_assessment_study_process.pdf)

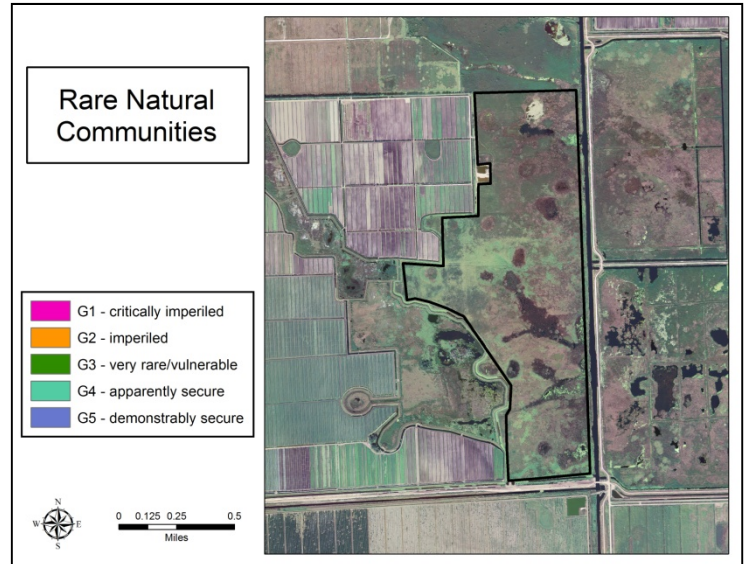
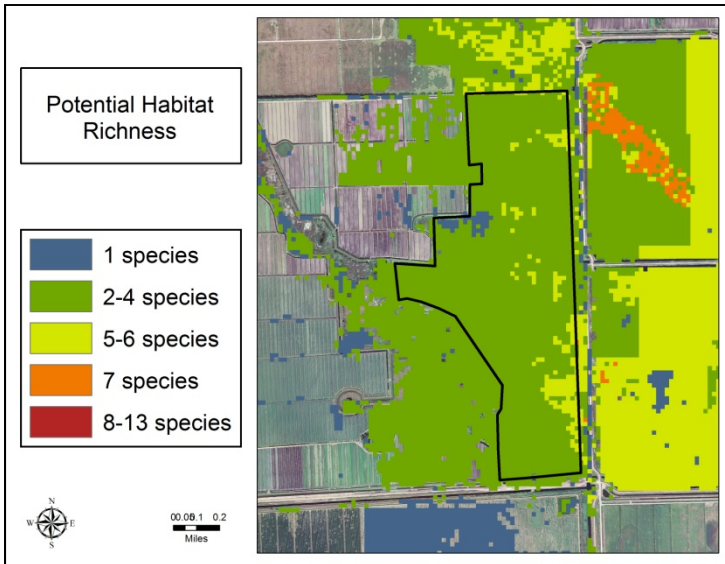
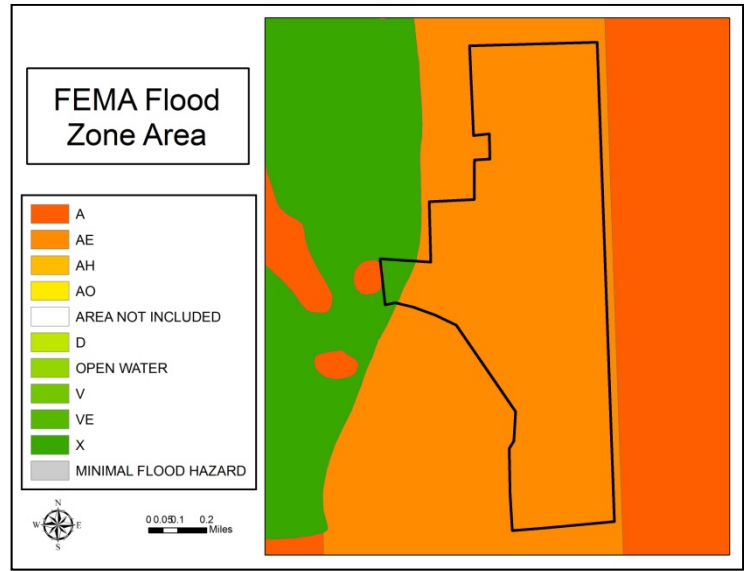
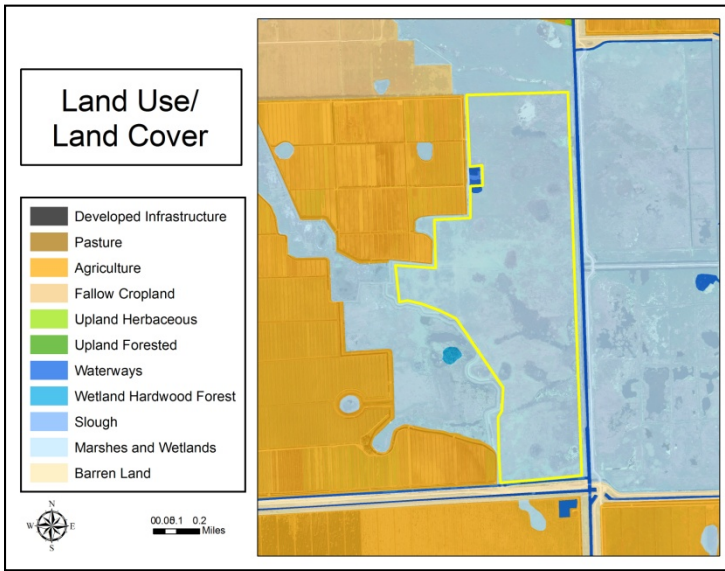


**Deer Fence Parcel, Photo**



**Thee Deer Fence parcel is a wet prairie / former cattle pasture, west of STA 5**

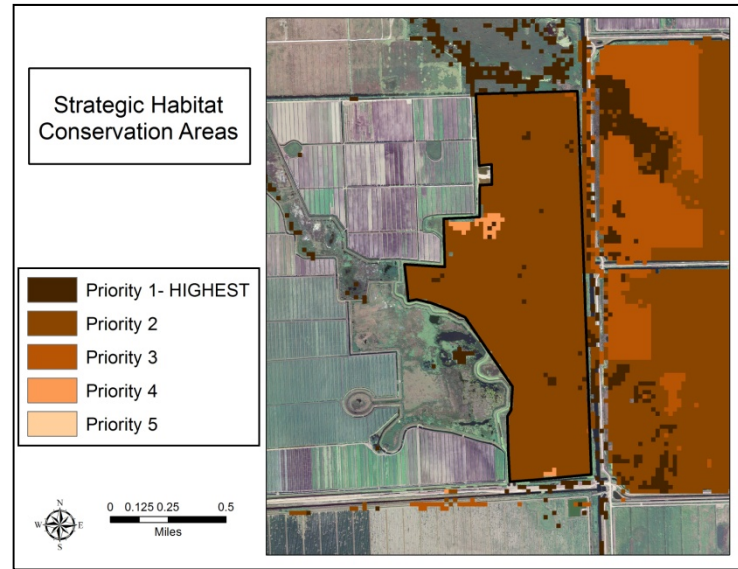
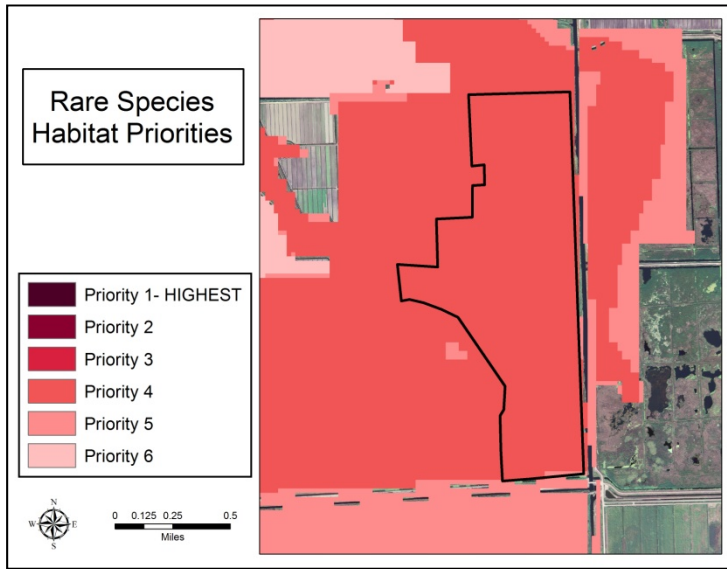
Deer Fence Parcel: Land Character



**IMPORTANT DISCLAIMER:** All maps in this document are a conceptual or planning tool only. The South Florida Water Management District does not guarantee or make any representation regarding the information contained herein. It is not self-executing or binding, and does not affect the interests of any persons or properties, including any present or future right or use of real property.

For more information on the data layers used in the assessment, please refer to the Land Assessment Study Process and Methodology document available here: [http://www.sfwmd.gov/portal/page/portal/xrepository/sfwmd\\_repository\\_pdf/land\\_assessment\\_study\\_process.pdf](http://www.sfwmd.gov/portal/page/portal/xrepository/sfwmd_repository_pdf/land_assessment_study_process.pdf)

**Deer Fence Parcel: Land Character  
(Continued)**



**IMPORTANT DISCLAIMER:** All maps in this document are a conceptual or planning tool only. The South Florida Water Management District does not guarantee or make any representation regarding the information contained herein. It is not self-executing or binding, and does not affect the interests of any persons or properties, including any present or future right or use of real property.

For more information on the data layers used in the assessment, please refer to the Land Assessment Study Process and Methodology document available here: [http://www.sfwmd.gov/portal/page/portal/xrepository/sfwmd\\_repository\\_pdf/land\\_assessment\\_study\\_process.pdf](http://www.sfwmd.gov/portal/page/portal/xrepository/sfwmd_repository_pdf/land_assessment_study_process.pdf)