

**Stormwater Treatment Areas**

Palm Beach and Hendry Counties

- Area within planning boundary footprint ~ 65,628 acres
- District fee-simple ownership ~ 65,527 acres
- Other public fee-simple ownership ~ 0 acres
  
- Area under other protective restriction  
(conservation easement, platted preserve area, etc.) ~ 0 acres

**Site Overview**

The District’s use of large Stormwater Treatment Projects to reduce the amount of phosphorous traveling into the everglades began in the late 1980s with the design of the Everglades Nutrient Removal project that is now part of STA 1 West. After the passage of the Florida Forever Act in 1994, plans were developed for a series of these projects stretching across the northern end of the Water Conservation Areas. They are now all operational.

**Assessment Units**

None, but see the parcel assessment below

Core Mission Value

These projects support the District’s Water Quality, Flood Control, Water Supply, and Natural Systems Restoration core missions.

Other Resource Value

Wetland treatment cells attract a wide variety of wildlife.

Management Issues

The areas are kept operational at optimal efficiency through intensive monitoring, and adjustments in vegetation and water levels.

Public Use and Recreation Value

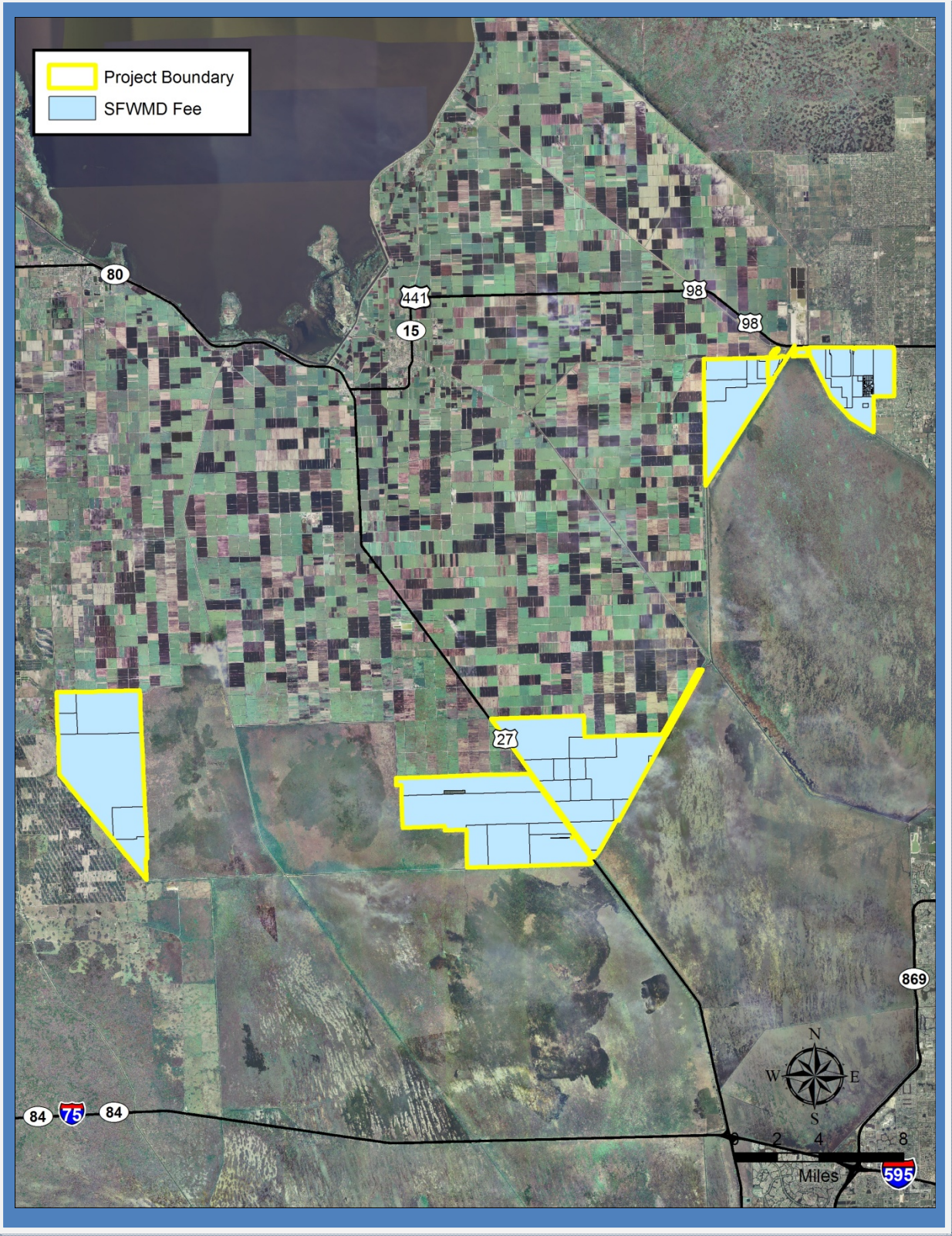
The STAs have several developed public use facilities and special waterfowl and alligator hunting opportunities. Bicycling and hiking on the levee tops are popular activities, as is bird watching and fishing in the perimeter canals.

**Individual Parcel Assessment**

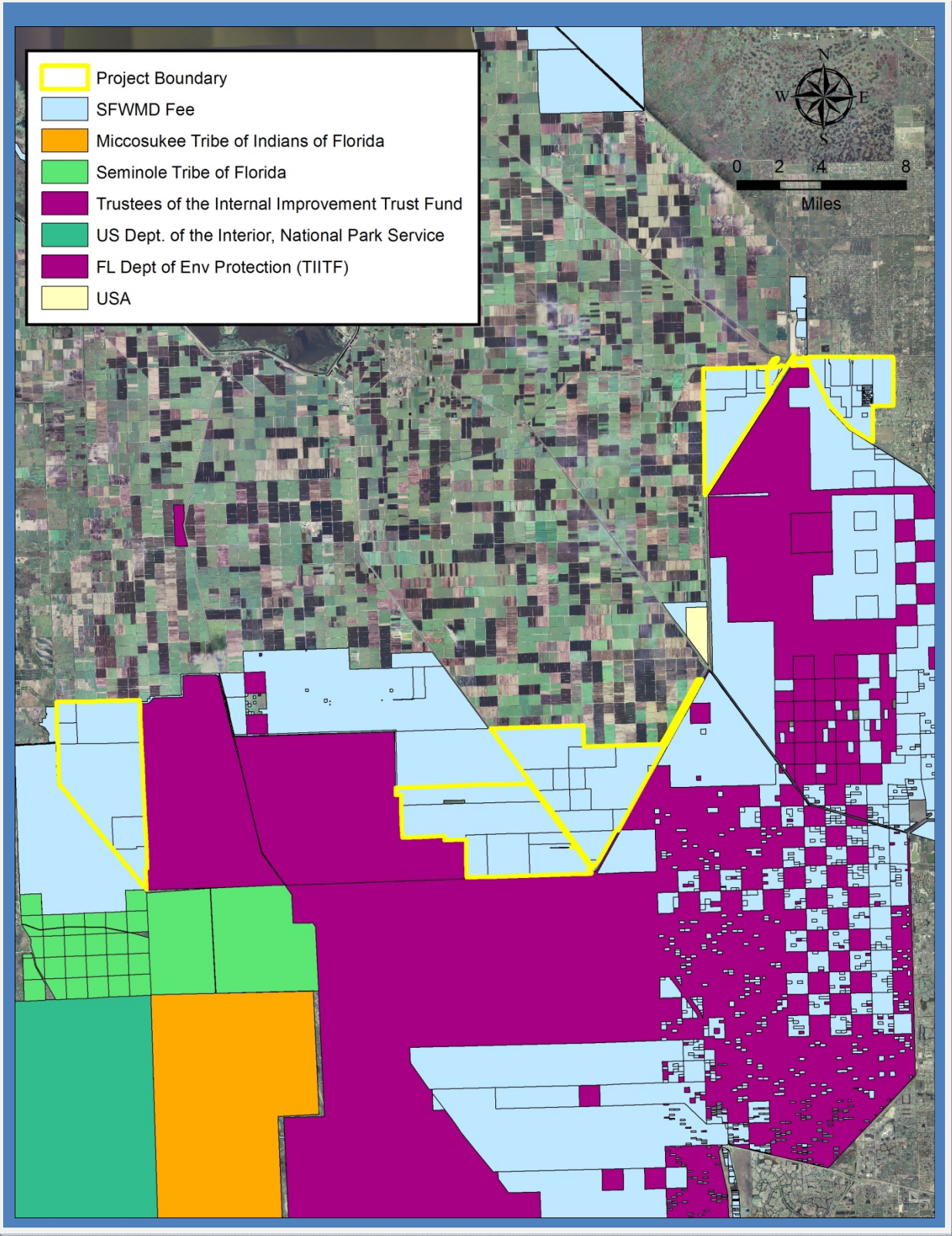
STA 1W Outparcel

This area lies outside of the project footprint of STA 1W, there is a sugar cane lease in place. ~ 39.92 acres

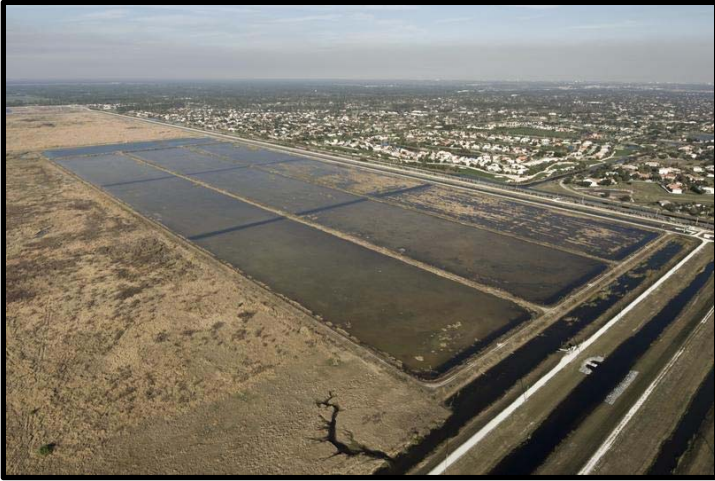
**STAs District Ownership**



**STAs Area Public Land**



STA 1E, Photos



Stormwater treatment cells and conveyance features (top), and public use facilities (bottom)

STA 1E, Photos



Ducks, wading birds and alligators are very common in STA 1E

STA 1W, Photos



Public use facilities and treatment cells of STA 1W, a new family of limpkins (upper right)

**STA 1W Outparcel, Photos**



**The STA 1W outparcel is a small sugar cane field that is a parcel that lies outside of the STA footprint.**

STA 2, Photos



Treatment cells of STA 2 and a pump station under construction (above), Flamingos periodically find their way to STA 2 (right).





**STA3/4, Photos**

Treatment cells of STA 3/4 and the Harold Campbell Public Use Are (bottom).



STA3/4, Photos



The STAs typically have very heavy bird activity. Coots (top left), a white-tailed kite (top right), and a massive group of wading birds, including great egrets, snowy egrets, roseate spoonbills, white pelicans, glossy ibis, white ibis, and wood storks (bottom)

STA 5/6, Photos



Treatment cells in STA 5/6

STA 5/6, Photos



Florida panther and a white-tail deer in STA 5/6

STA 5/6, Photos



Birdwatchers on an observation and hunting blind (above), white pelicans (top right), and a variety of wading birds including many wood storks (right and below).



STA 5/6, Photos



Wildlife utilization of STA 5/6: raccoon (left) alligator (middle left), bobwhite (below), yellow everglades rat snake (bottom left), and a leopard frog (bottom right).

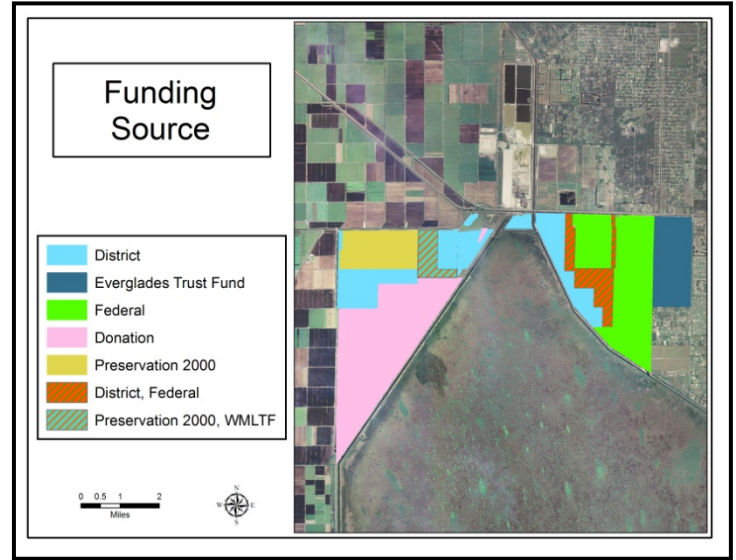
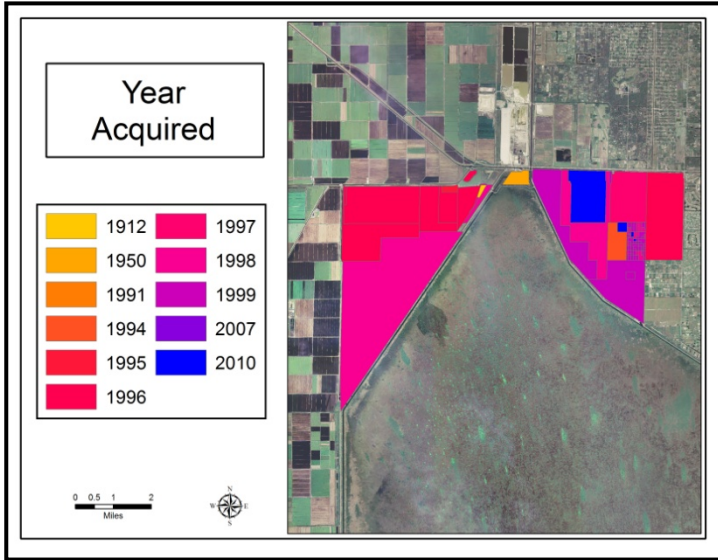


STA 5/6, Photos

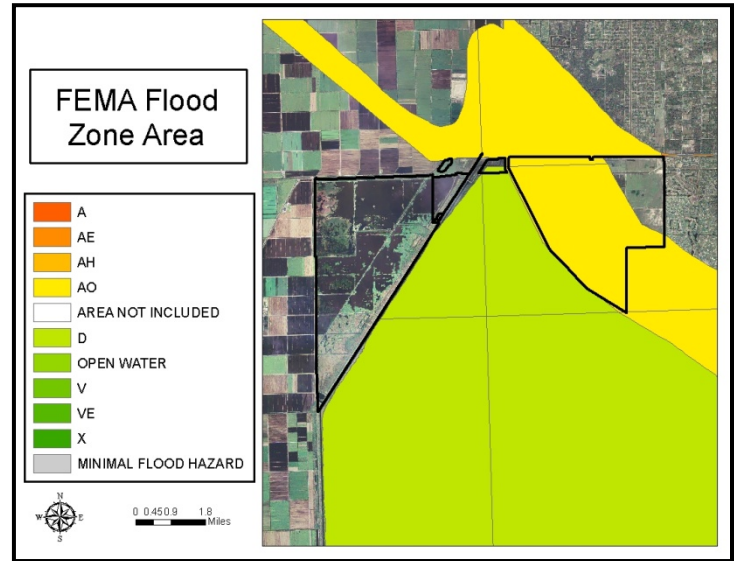
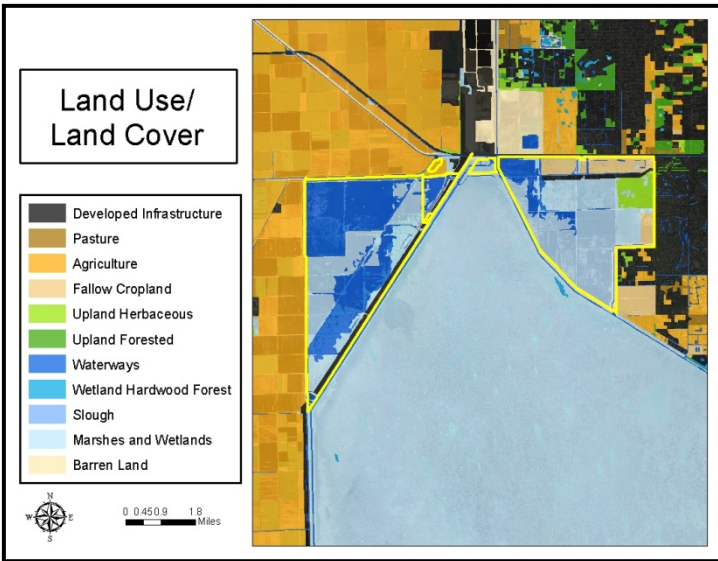


Snail kite at STA 5/6 (top left), Osprey (top right), Killdeer (bottom left), and a swallow-tail kite (bottom right).

**STA 1W/1E: Land Acquisition**



**STA 1W/1E: Land Character**

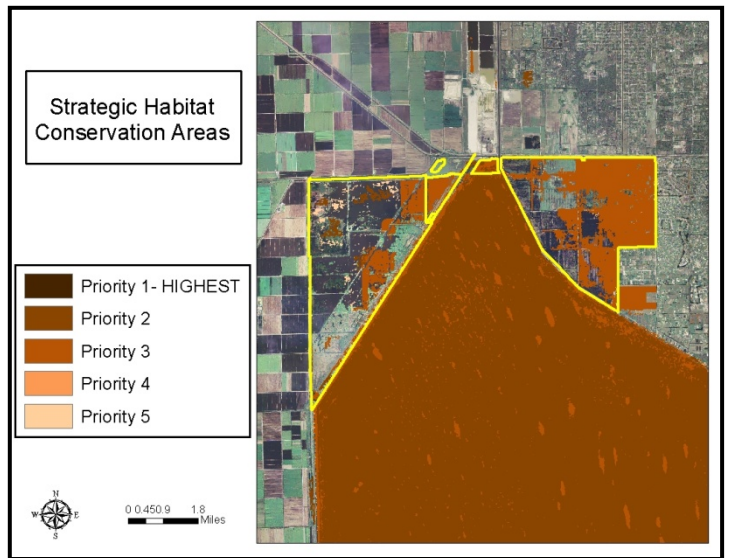
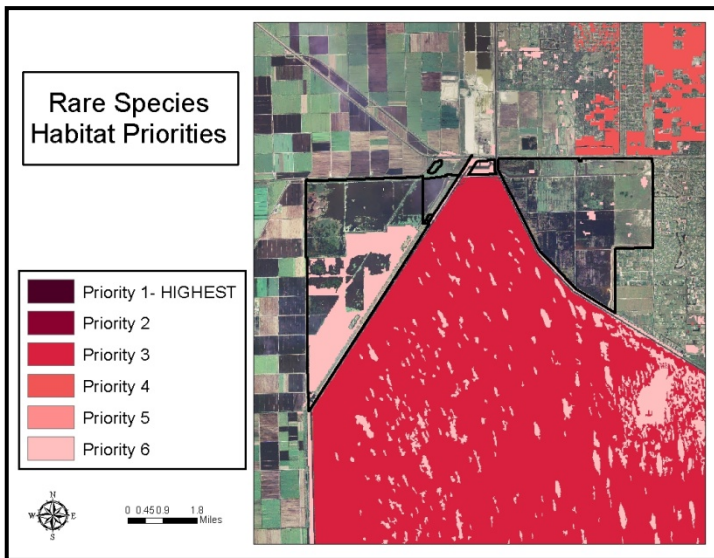
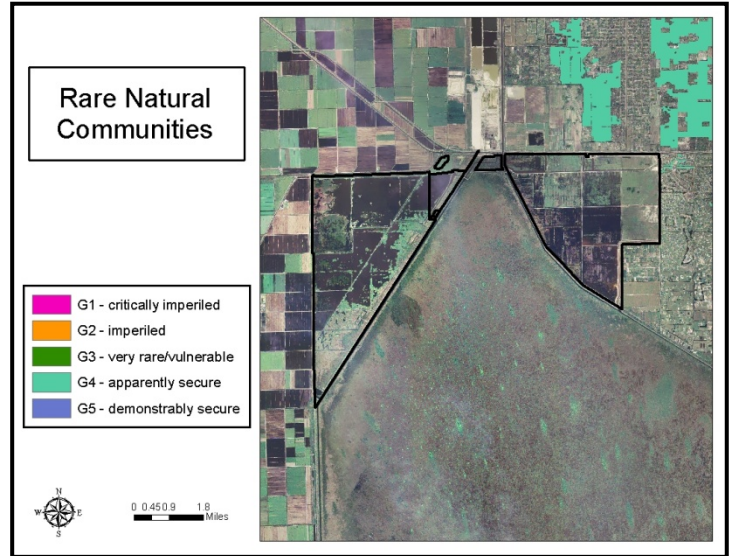
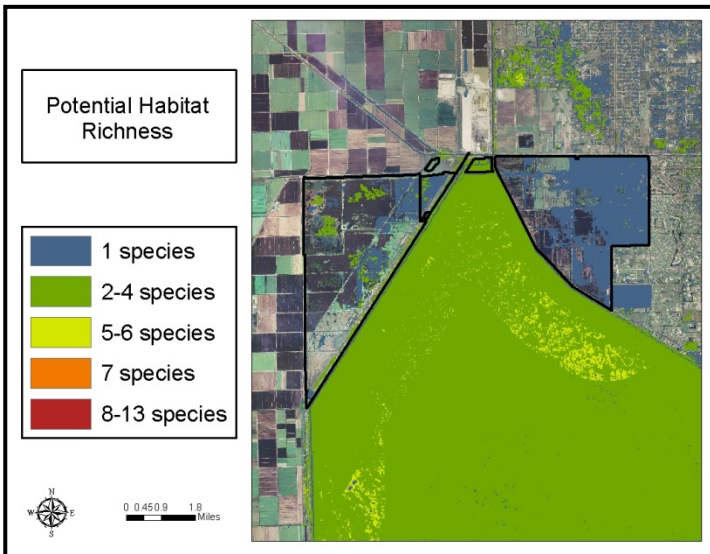


**IMPORTANT DISCLAIMER:** All maps in this document are a conceptual or planning tool only. The South Florida Water Management District does not guarantee or make any representation regarding the information contained herein. It is not self-executing or binding, and does not affect the interests of any persons or properties, including any present or future right or use of real property.

For more information on the data layers used in the assessment, please refer to the Land Assessment Study Process and Methodology document available here: [http://www.sfwmd.gov/portal/page/portal/xrepository/sfwmd\\_repository\\_pdf/land\\_assessment\\_study\\_process.pdf](http://www.sfwmd.gov/portal/page/portal/xrepository/sfwmd_repository_pdf/land_assessment_study_process.pdf)



STA 1W/1E: Land Character (Continued)

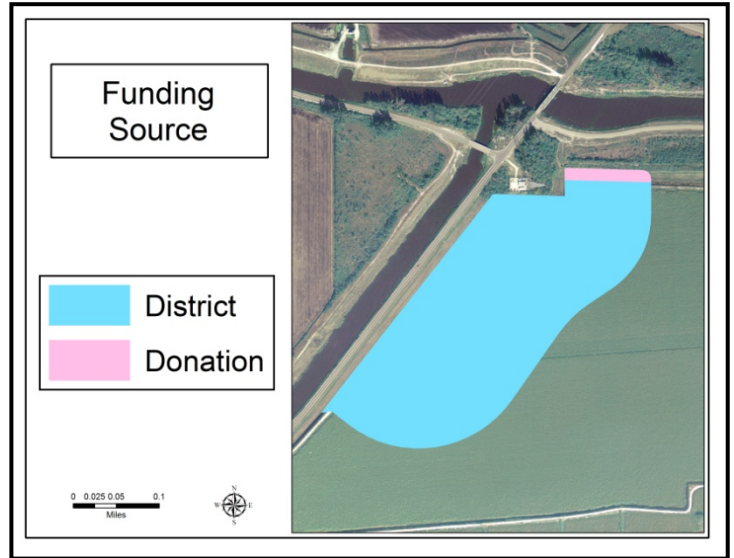
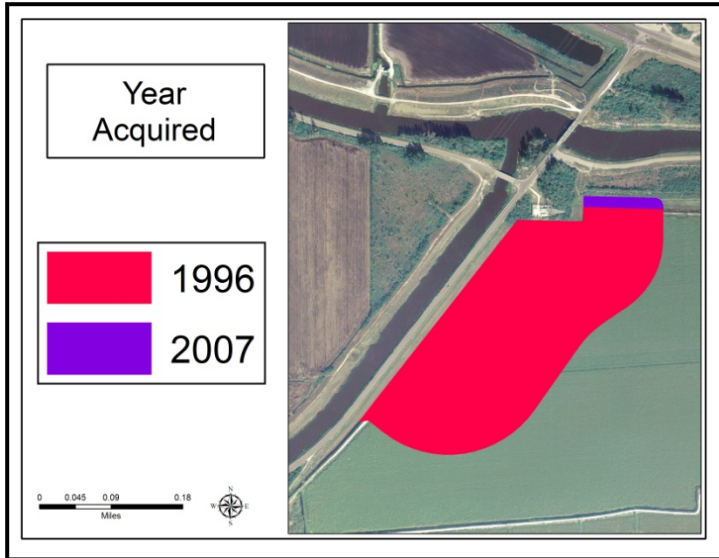


**IMPORTANT DISCLAIMER:** All maps in this document are a conceptual or planning tool only. The South Florida Water Management District does not guarantee or make any representation regarding the information contained herein. It is not self-executing or binding, and does not affect the interests of any persons or properties, including any present or future right or use of real property.

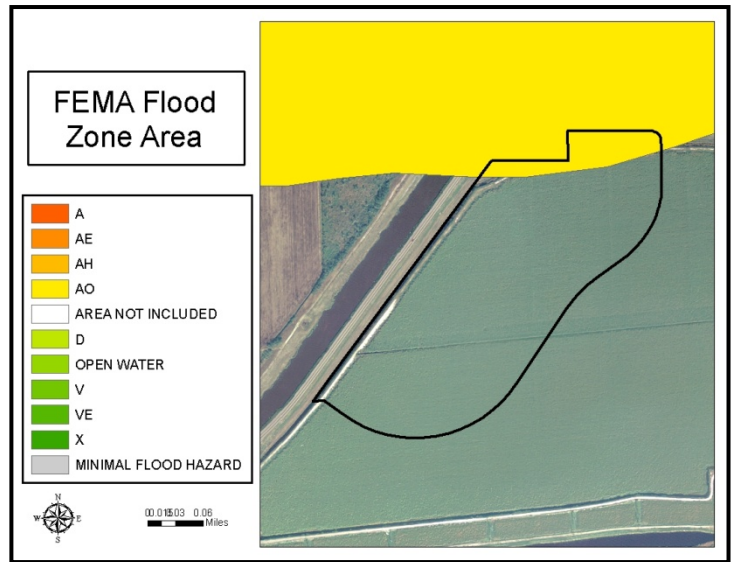
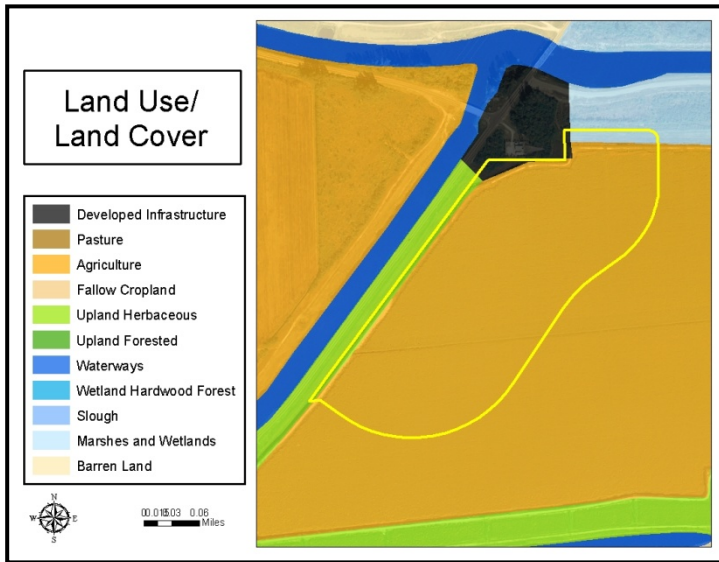
For more information on the data layers used in the assessment, please refer to the Land Assessment Study Process and Methodology document available here:

[http://www.sfwmd.gov/portal/page/portal/xrepository/sfwmd\\_repository\\_pdf/land\\_assessment\\_study\\_process.pdf](http://www.sfwmd.gov/portal/page/portal/xrepository/sfwmd_repository_pdf/land_assessment_study_process.pdf)

STA 1W Outparcel: Land Acquisition



STA 1W Outparcel: Land Character

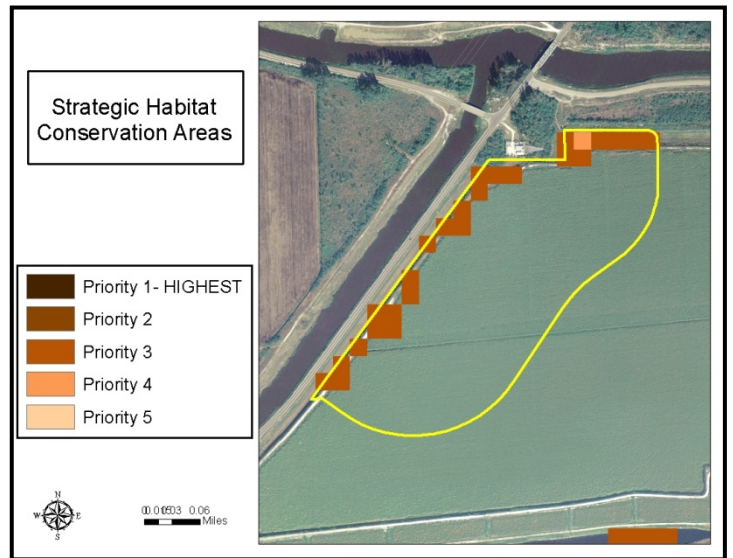
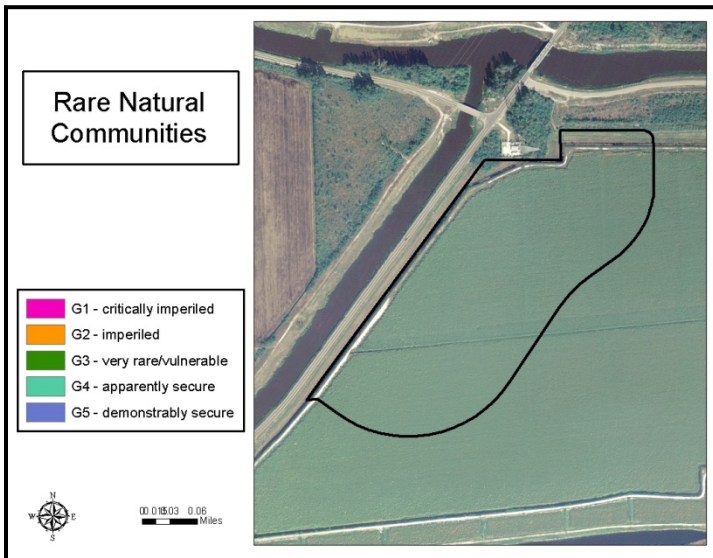
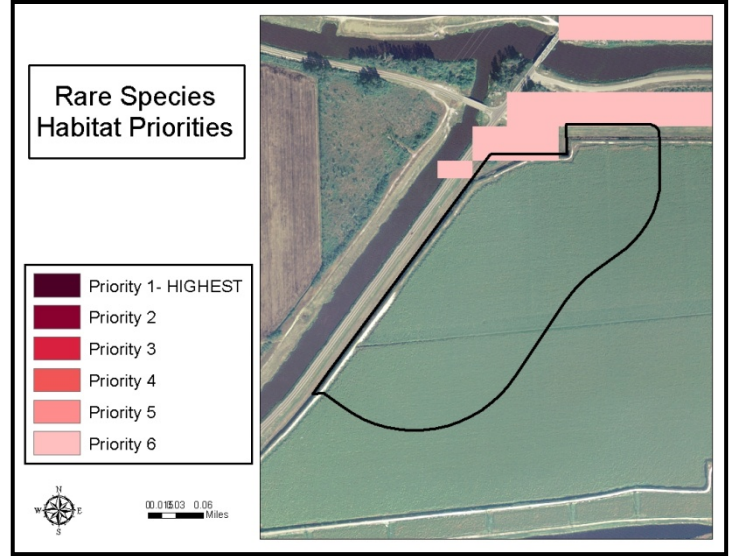
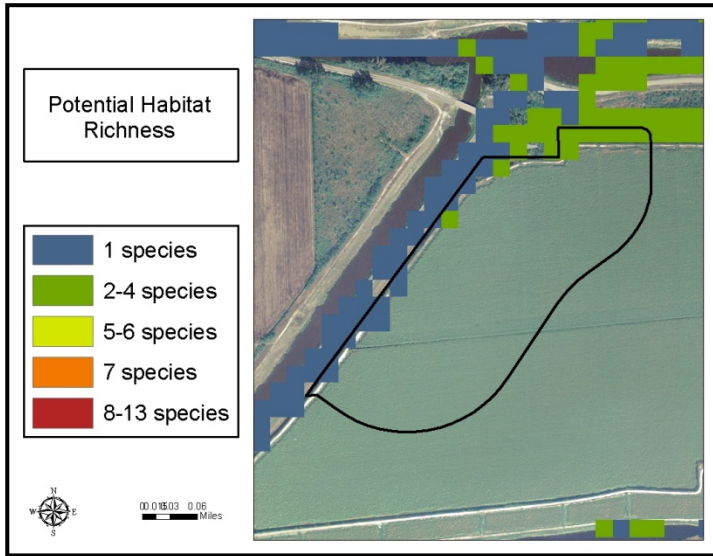


**IMPORTANT DISCLAIMER:** All maps in this document are a conceptual or planning tool only. The South Florida Water Management District does not guarantee or make any representation regarding the information contained herein. It is not self-executing or binding, and does not affect the interests of any persons or properties, including any present or future right or use of real property.

For more information on the data layers used in the assessment, please refer to the Land Assessment Study Process and Methodology document available here:

[http://www.sfwmd.gov/portal/page/portal/xrepository/sfwmd\\_repository\\_pdf/land\\_assessment\\_study\\_process.pdf](http://www.sfwmd.gov/portal/page/portal/xrepository/sfwmd_repository_pdf/land_assessment_study_process.pdf)

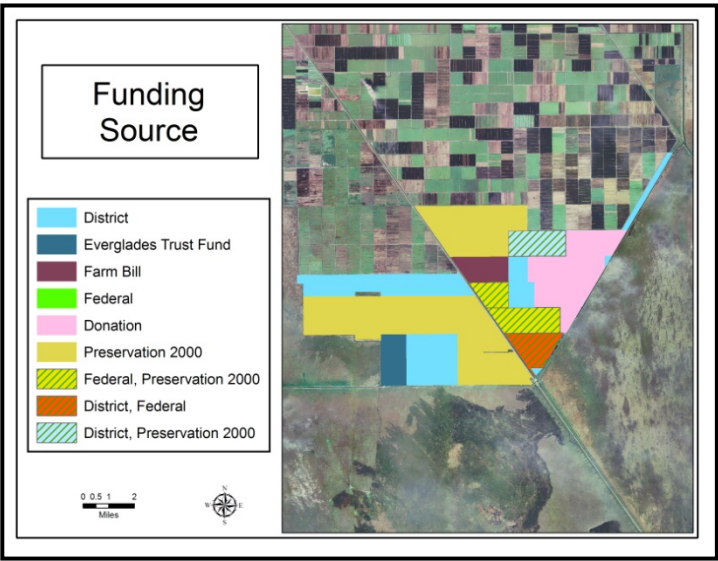
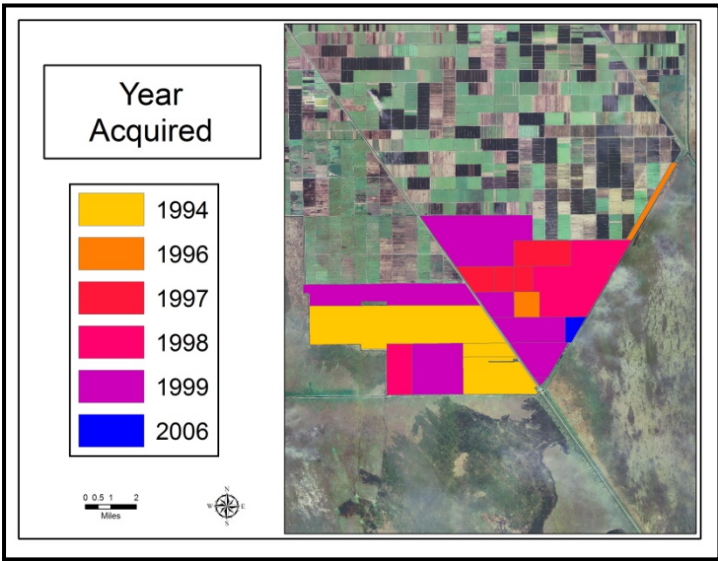
STA 1W Outparcel: Land Character  
(Continued)



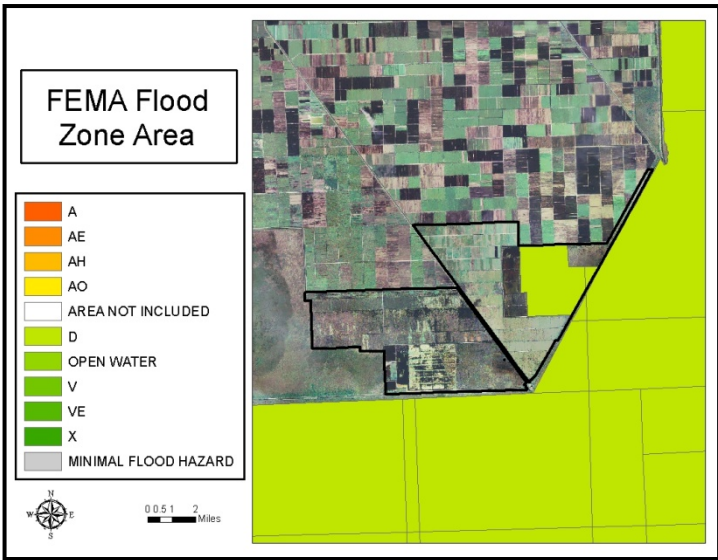
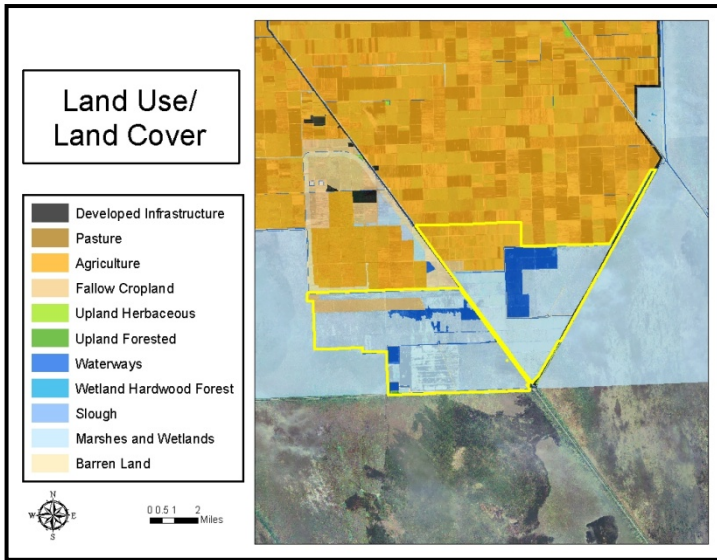
**IMPORTANT DISCLAIMER:** All maps in this document are a conceptual or planning tool only. The South Florida Water Management District does not guarantee or make any representation regarding the information contained herein. It is not self-executing or binding, and does not affect the interests of any persons or properties, including any present or future right or use of real property.

For more information on the data layers used in the assessment, please refer to the Land Assessment Study Process and Methodology document available here: [http://www.sfwmd.gov/portal/page/portal/xrepository/sfwmd\\_repository\\_pdf/land\\_assessment\\_study\\_process.pdf](http://www.sfwmd.gov/portal/page/portal/xrepository/sfwmd_repository_pdf/land_assessment_study_process.pdf)

**STA 2 and 3/4: Land Acquisition**



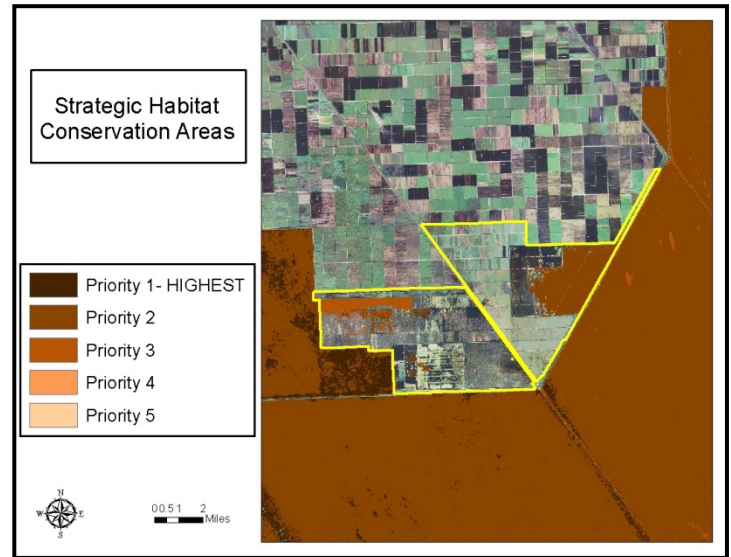
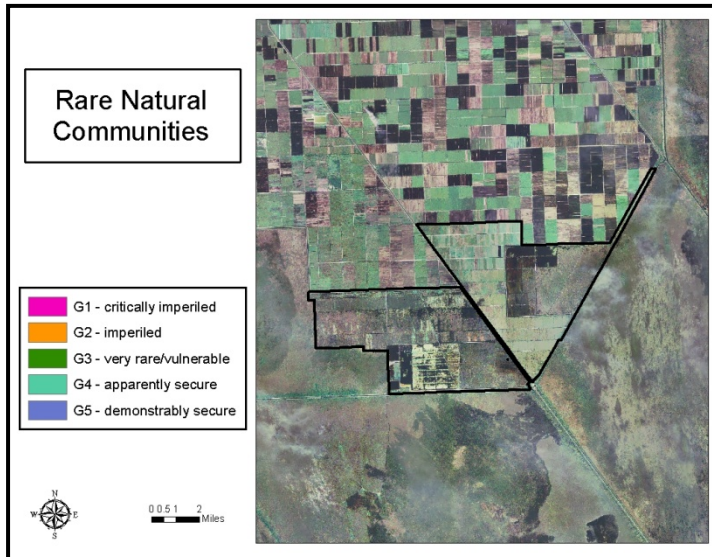
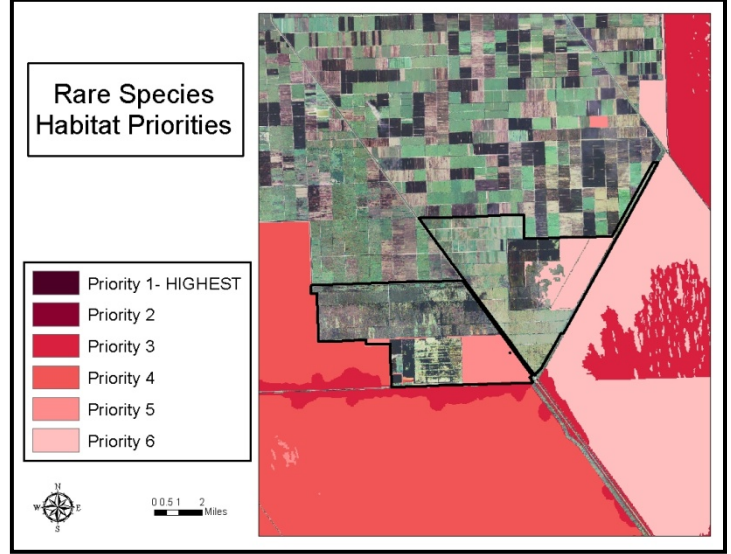
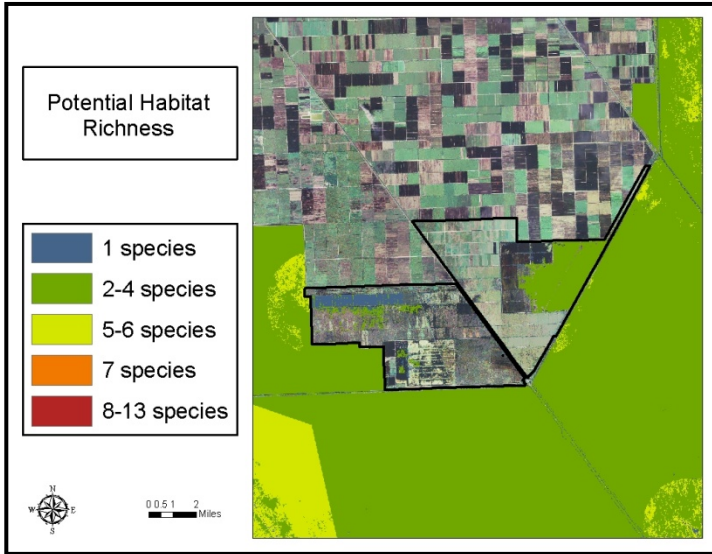
**STA 2 and 3/4: Land Character**



**IMPORTANT DISCLAIMER:** All maps in this document are a conceptual or planning tool only. The South Florida Water Management District does not guarantee or make any representation regarding the information contained herein. It is not self-executing or binding, and does not affect the interests of any persons or properties, including any present or future right or use of real property.

For more information on the data layers used in the assessment, please refer to the Land Assessment Study Process and Methodology document available here: [http://www.sfwmd.gov/portal/page/portal/xrepository/sfwmd\\_repository\\_pdf/land\\_assessment\\_study\\_process.pdf](http://www.sfwmd.gov/portal/page/portal/xrepository/sfwmd_repository_pdf/land_assessment_study_process.pdf)

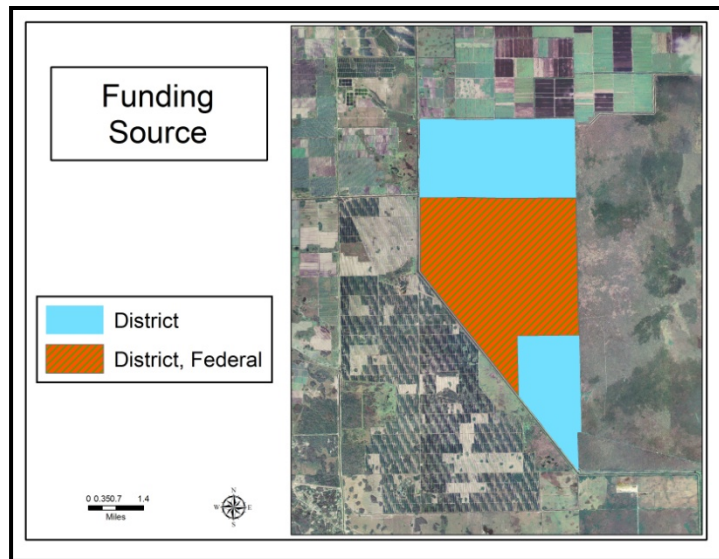
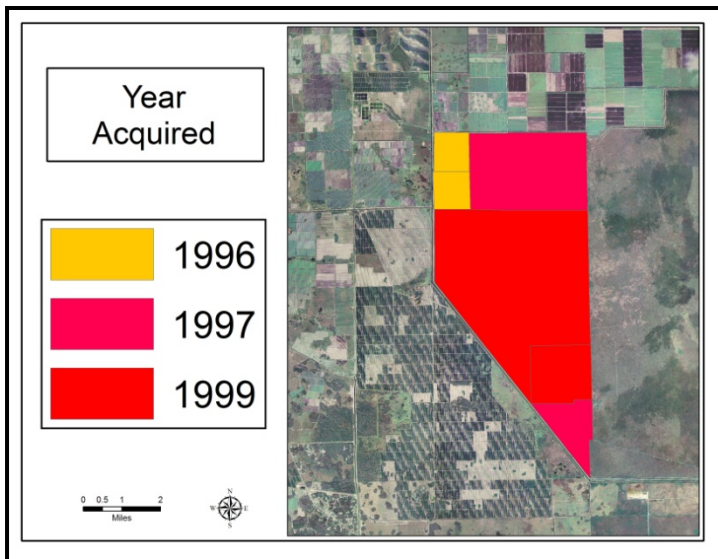
STA 2 and 3/4: Land Character (Continued)



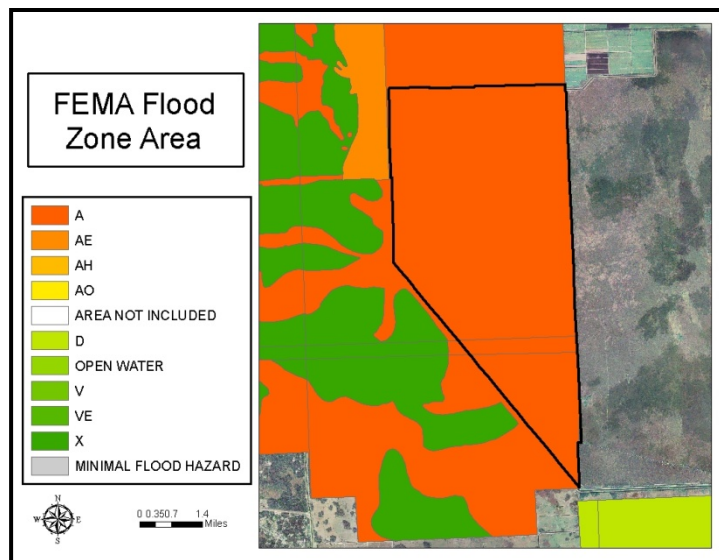
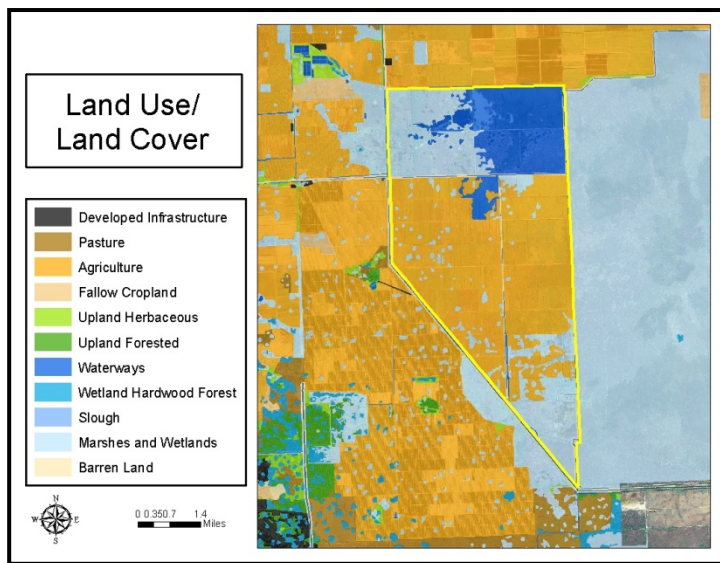
**IMPORTANT DISCLAIMER:** All maps in this document are a conceptual or planning tool only. The South Florida Water Management District does not guarantee or make any representation regarding the information contained herein. It is not self-executing or binding, and does not affect the interests of any persons or properties, including any present or future right or use of real property.

For more information on the data layers used in the assessment, please refer to the Land Assessment Study Process and Methodology document available here: [http://www.sfwmd.gov/portal/page/portal/xrepository/sfwmd\\_repository\\_pdf/land\\_assessment\\_study\\_process.pdf](http://www.sfwmd.gov/portal/page/portal/xrepository/sfwmd_repository_pdf/land_assessment_study_process.pdf)

**STA 5/6: Land Acquisition**



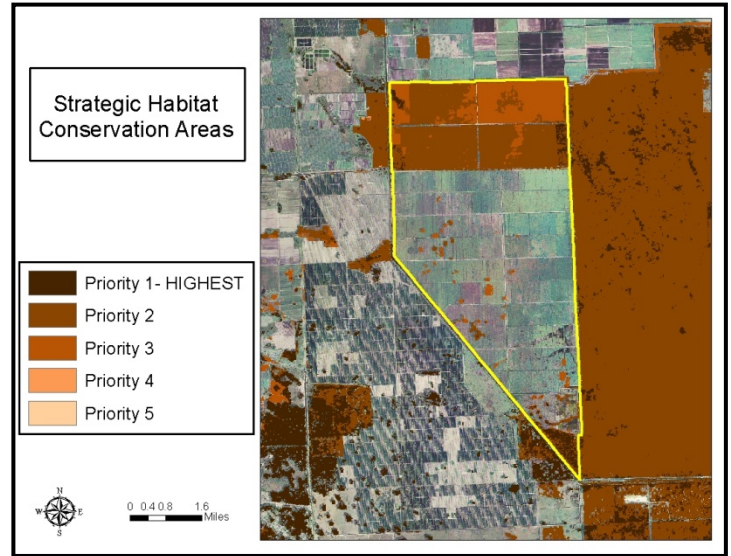
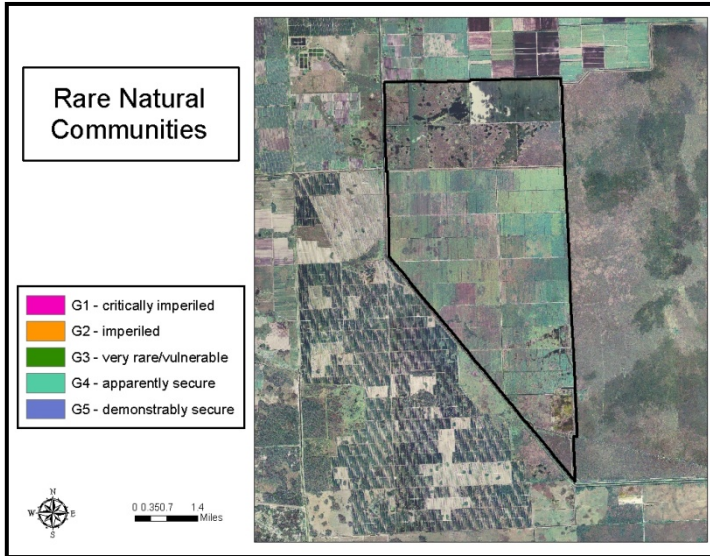
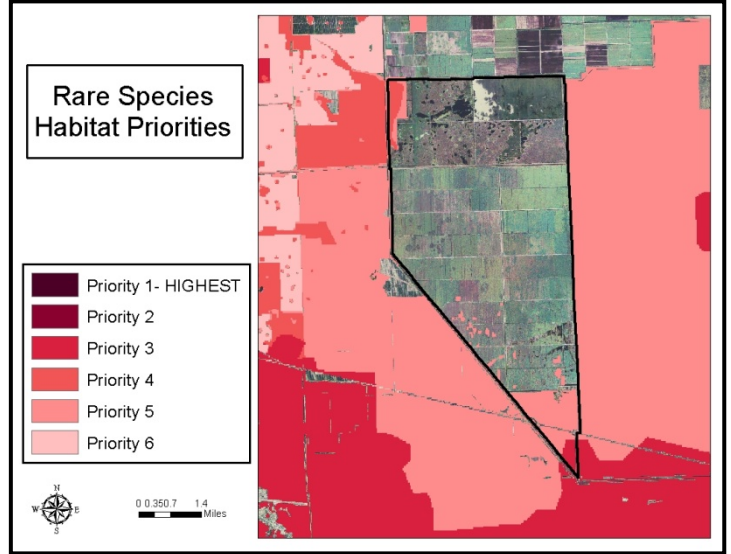
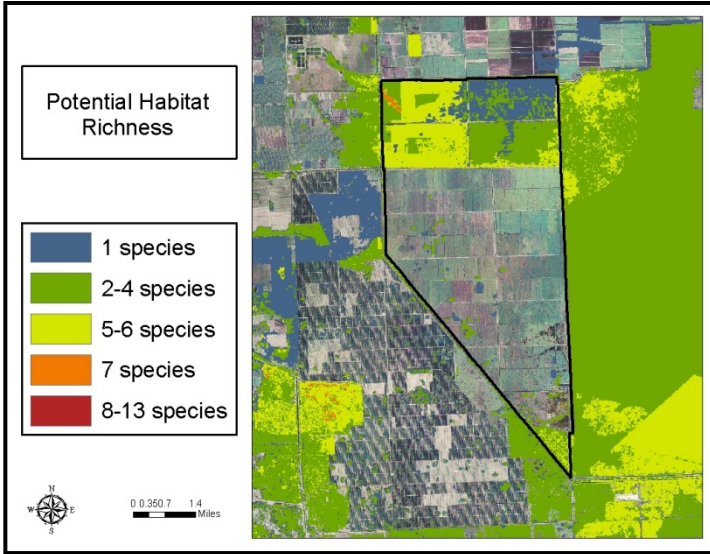
**STA 5/6: Land Character**



**IMPORTANT DISCLAIMER:** All maps in this document are a conceptual or planning tool only. The South Florida Water Management District does not guarantee or make any representation regarding the information contained herein. It is not self-executing or binding, and does not affect the interests of any persons or properties, including any present or future right or use of real property.

For more information on the data layers used in the assessment, please refer to the Land Assessment Study Process and Methodology document available here: [http://www.sfwmd.gov/portal/page/portal/xrepository/sfwmd\\_repository\\_pdf/land\\_assessment\\_study\\_process.pdf](http://www.sfwmd.gov/portal/page/portal/xrepository/sfwmd_repository_pdf/land_assessment_study_process.pdf)

STA 5/6: Land Character (Continued)



**IMPORTANT DISCLAIMER:** All maps in this document are a conceptual or planning tool only. The South Florida Water Management District does not guarantee or make any representation regarding the information contained herein. It is not self-executing or binding, and does not affect the interests of any persons or properties, including any present or future right or use of real property.

For more information on the data layers used in the assessment, please refer to the Land Assessment Study Process and Methodology document available here: [http://www.sfwmd.gov/portal/page/portal/xrepository/sfwmd\\_repository\\_pdf/land\\_assessment\\_study\\_process.pdf](http://www.sfwmd.gov/portal/page/portal/xrepository/sfwmd_repository_pdf/land_assessment_study_process.pdf)