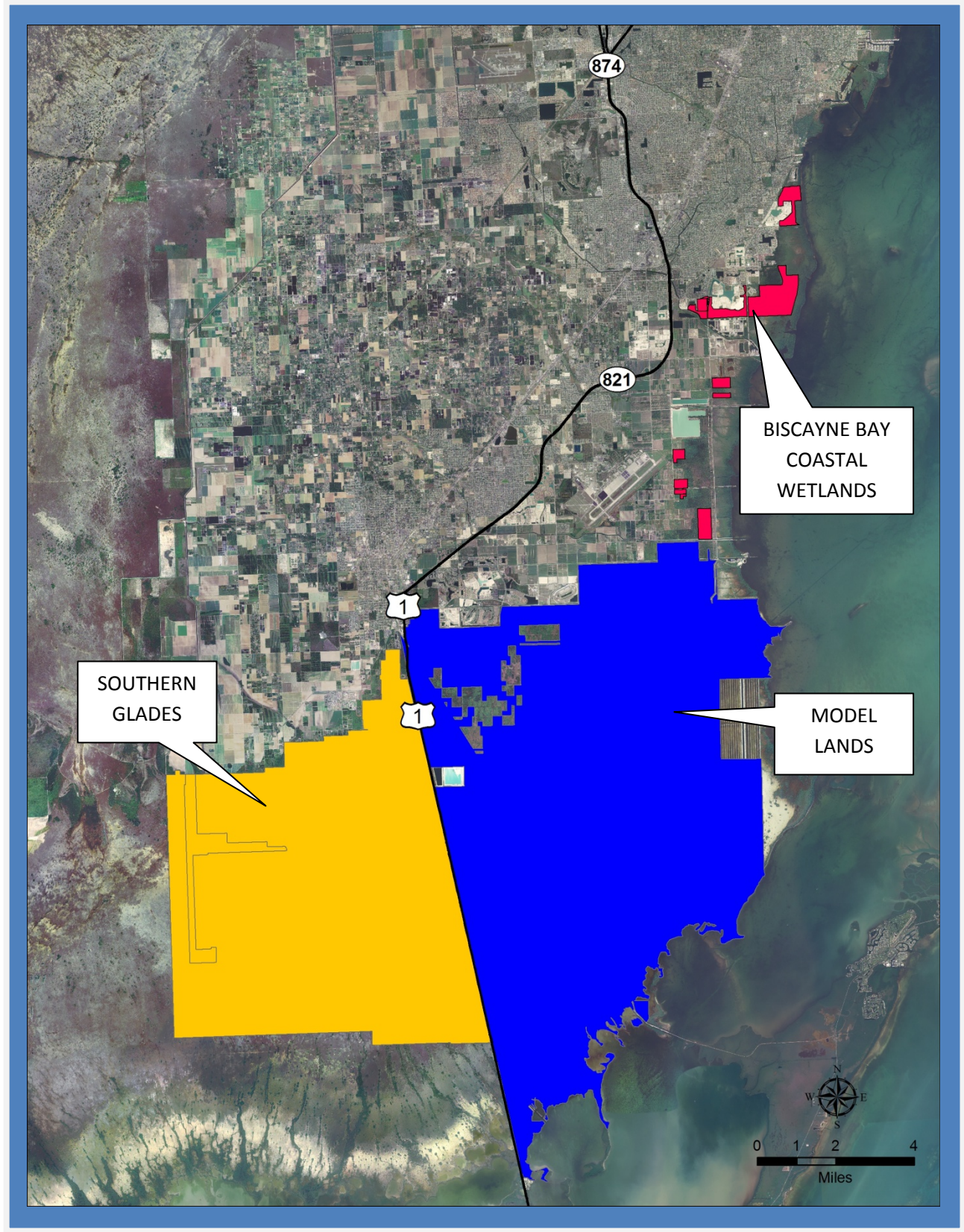
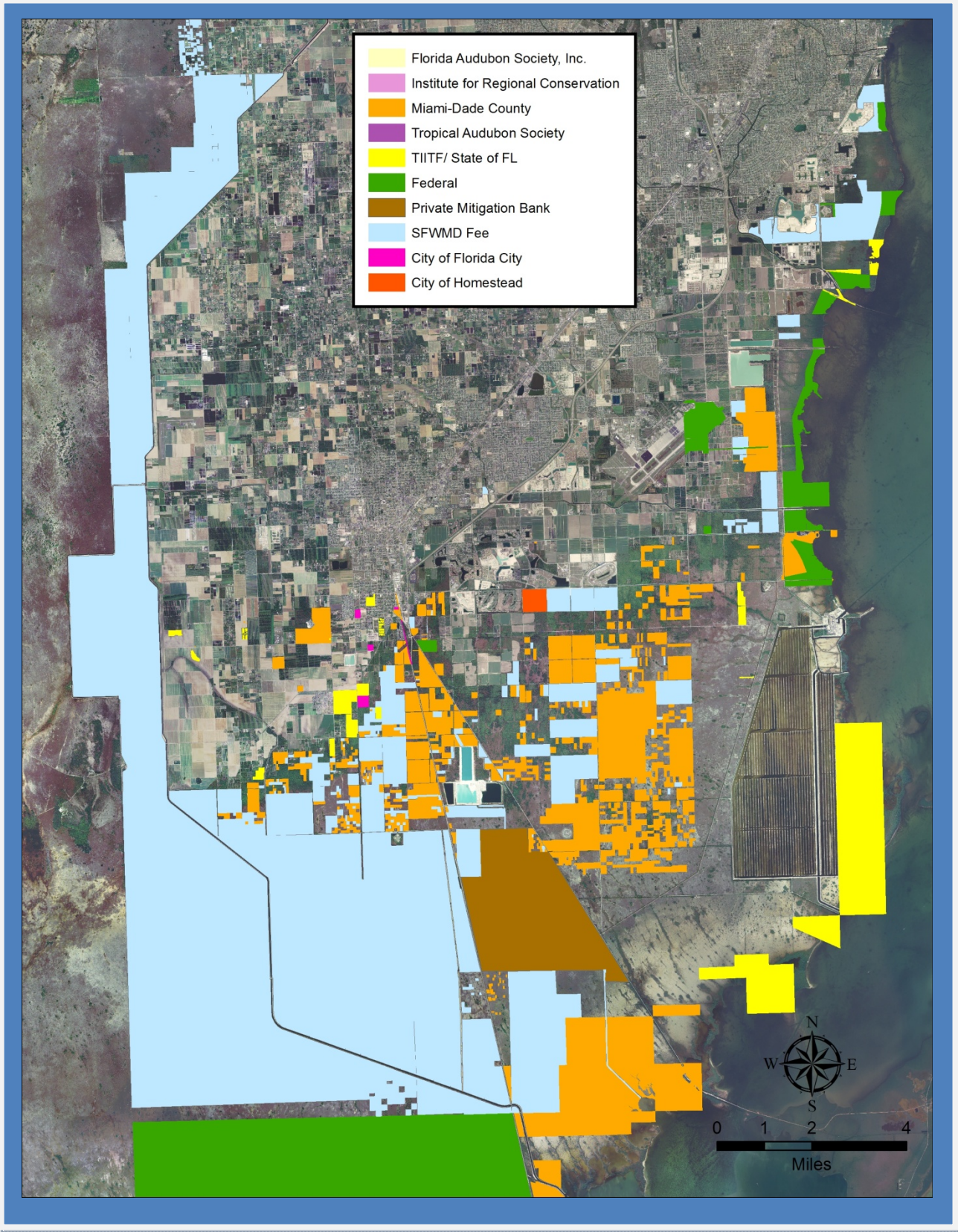


South Miami-Dade Wetlands

Assessment Units (these are conceptual planning areas, and do not represent District ownership)



South Miami-Dade Wetlands
Area Public Lands



South Miami-Dade Wetlands

Miami-Dade

District fee-simple ownership ~ 37,433 acres
 Other public fee-simple ownership See map

Site Overview

There are three units: Southern Glades, lying west of U.S. 1; Model Lands, lying east of U.S. 1 and west of the Turkey Point power plant; and Biscayne Bay Coastal Wetlands, lying north of the Turkey Point plant. All three were originally identified as potential acquisitions under the Save Our Rivers program. Southern glades was one of the program’s earliest acquisitions. Model lands was added as a Save Our Rivers project in 1991, and Biscayne Bay Coastal Wetlands in 1999 after the development of the Comprehensive Everglades Restoration Plan.

Assessment Units

Southern Glades

Core Mission Value

This property contains the C-111 spreader canal project and surrounding wetlands. This project includes hydrologic enhancements to the southern glades wetlands, as well as to the eastern sloughs of Everglades National Park. The property supports the natural resource restoration and water quality mission objectives.

Other Resource Value

These areas contain very large areas of relatively rare plant communities including salt flats and marl prairie. The endangered cape sable seaside sparrow may be found on the property.

Management Issues

The treatment of invasive exotic species over such a large area is costly and challenging. The northern fringe of the model lands and southern glades wetlands are an impenetrable forest of pan-tropical invasive species. Both the County and the District own a significant amount of land within this area.

Public Use and Recreation Value

Most of the site has been established as a Wildlife and Environmental Area with hunting, fishing, and bicycling as popular activities.

Model Lands

Core Mission Value

The model lands are much like southern glades in character and composition. The land within this area are expected to benefit from hydrologic enhancements through the development of the Comprehensive Everglades Restoration Plan.

Other Resource Value

These areas contain very large areas of relatively rare plant communities including salt flats and marl prairie.

Management Issues

Both the County and the District own a significant amount of land within this area. The County and the District have executed an agreement that allows both entities to partner in the management of these properties.

Public Use and Recreation Value

There are currently no developed public use facilities.

Biscayne Bay Coastal Wetlands

Core Mission Value

The goal of this project is to improve the ecological health of Biscayne Bay (including freshwater wetlands, tidal creeks and near- shore habitat) by adjusting the quantity, quality, timing, and distribution of freshwater entering Biscayne Bay and Biscayne National Park.

Other Resource

Improving salinity distribution near the shoreline with sustained lower-than- seawater salinities in tidal wetlands can help to reestablish productive nursery habitat for shrimp and shellfish, including oyster reef communities.

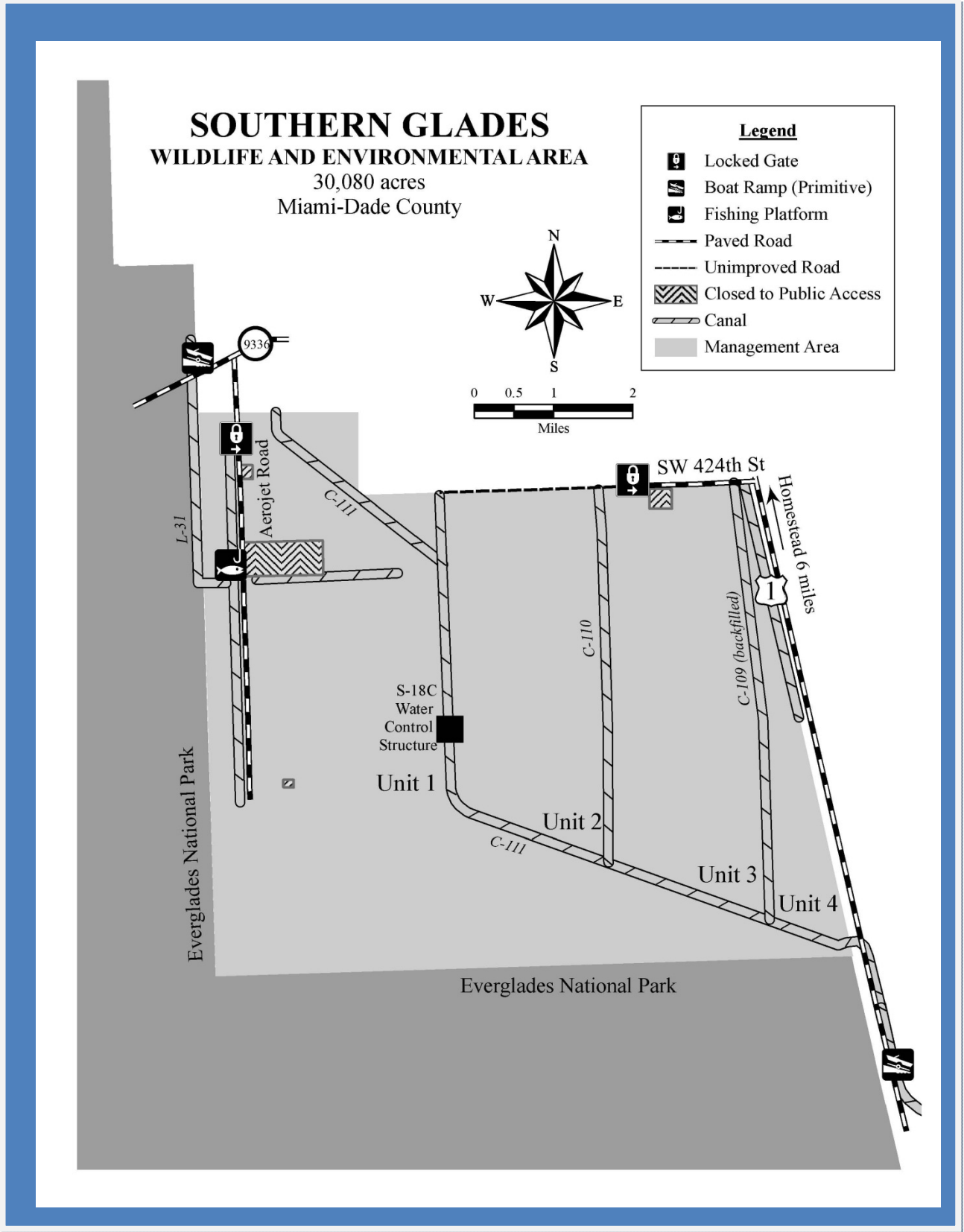
Management Issues

The properties covered include lands owned by Miami-Dade County, the District, and the National Park Service.

Public Use and Recreation Value

The recreation activities proposed include: biking/walking trails, environmental interpretation, canoeing/kayaking, bank fishing, tent camping, and nature study.

Southern Glades, Wildlife and Environmental Area Map



Southern Glades, Photos



The northern portion of Southern Glades is a forest of pan-tropical invasive exotic trees. Here shoebutton ardesia can achieve remarkable densities (above); this jungle of exotics is a far cry from the natural landscape to the south which is characterized by marsh and marl prairie where the purple blooms of native Muhly grass are a striking display (below).



Southern Glades, Photos



Fishing piers available for public use (above), a prescribed fire in Southern Glades (below).



Southern Glades, Aerojet, Photos



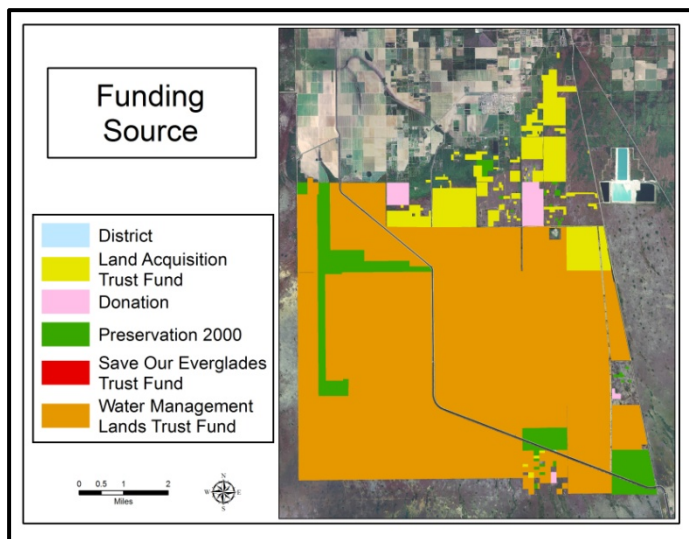
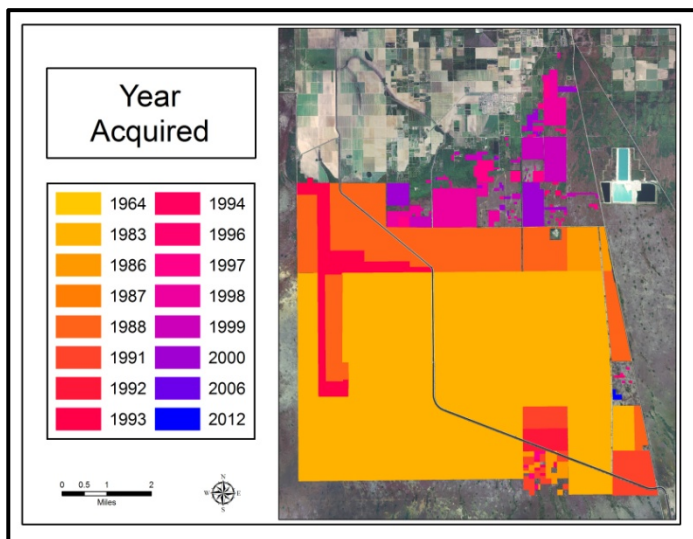
The former Aerojet rocket testing facility is located on the northwestern portion of the site. Here, engineers built and tested the alternative heavy-lift design to the Saturn rockets used in the Apollo missions. These were enormous monolithic-hull rockets, rather than the segmented design of the Saturn spacecraft. As such, they remain the largest rocket engines ever fired. The remains of a massive 260-inch rocket chamber still lie in an underground silo on-site.

Southern Glades, Aerojet, Photos

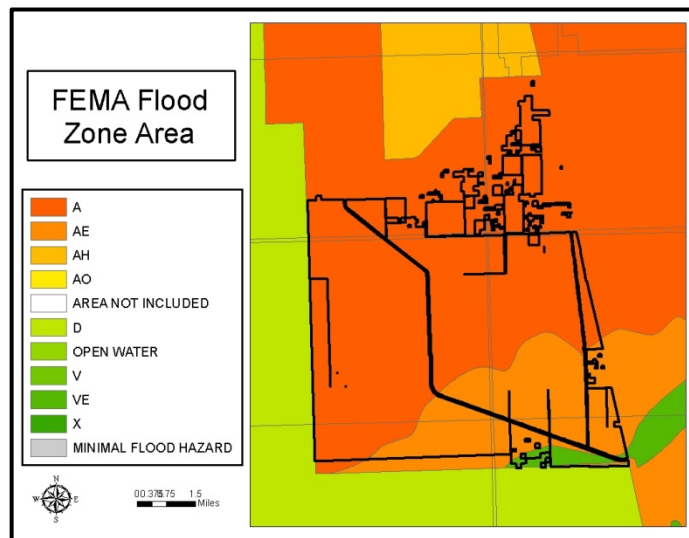
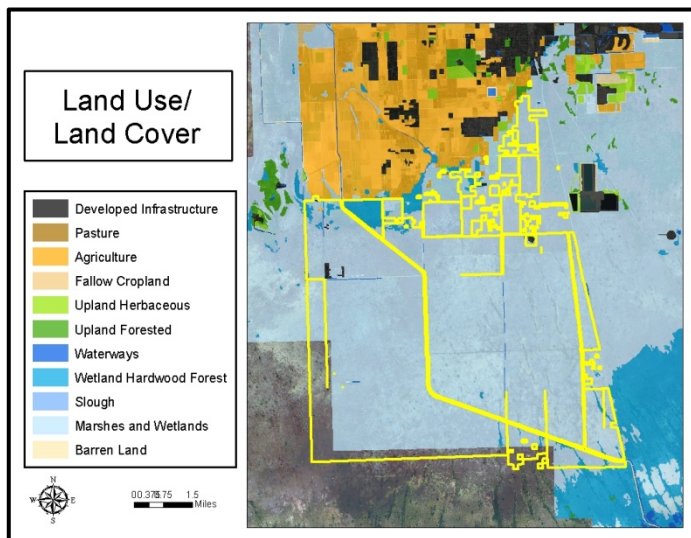


The installation and test-firing of Aerojet's 260-inch rocket motor.

Southern Glades: Land Acquisition



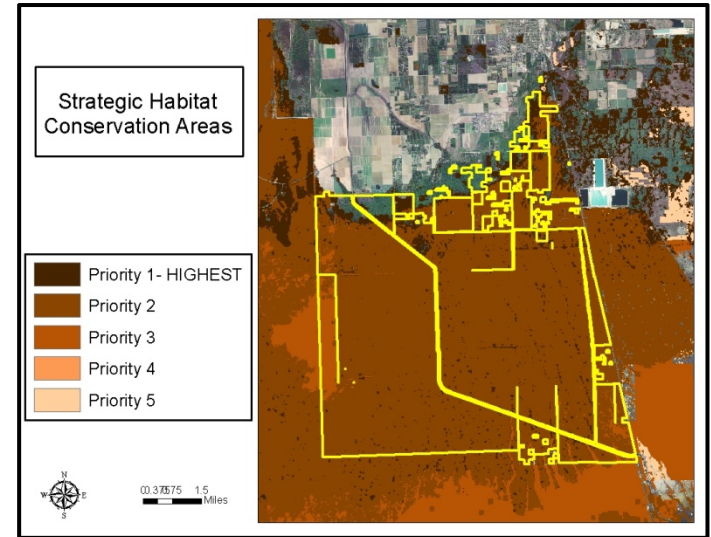
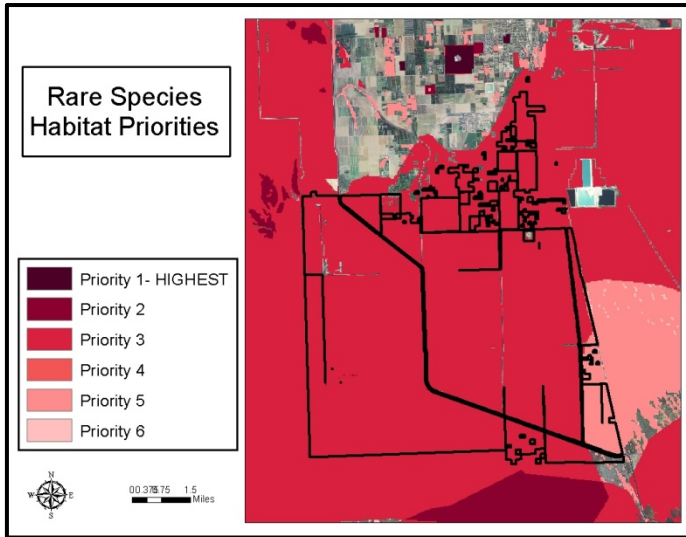
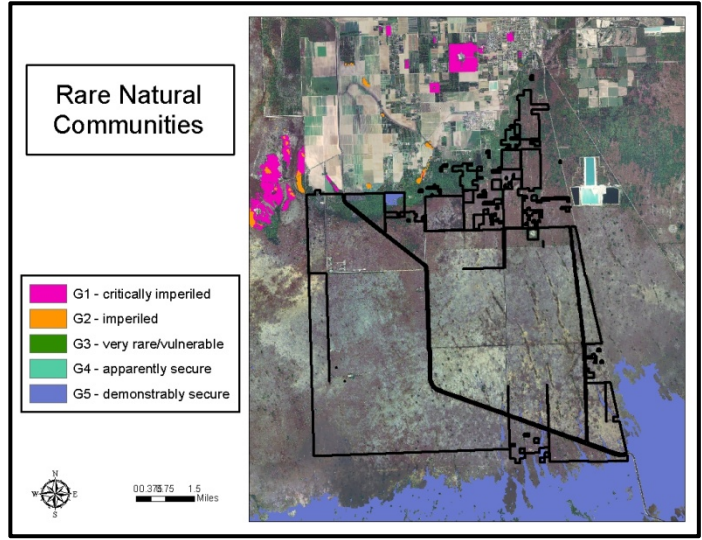
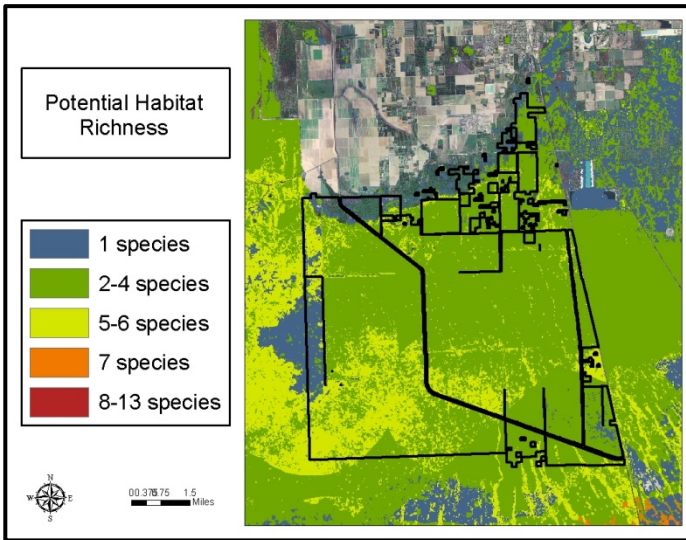
Southern Glades: Land Character



IMPORTANT DISCLAIMER: All maps in this document are a conceptual or planning tool only. The South Florida Water Management District does not guarantee or make any representation regarding the information contained herein. It is not self-executing or binding, and does not affect the interests of any persons or properties, including any present or future right or use of real property.

For more information on the data layers used in the assessment, please refer to the Land Assessment Study Process and Methodology document available here: http://www.sfwmd.gov/portal/page/portal/xrepository/sfwmd_repository_pdf/land_assessment_study_process.pdf

Southern Glades: Land Character (Continued)



IMPORTANT DISCLAIMER: All maps in this document are a conceptual or planning tool only. The South Florida Water Management District does not guarantee or make any representation regarding the information contained herein. It is not self-executing or binding, and does not affect the interests of any persons or properties, including any present or future right or use of real property.

For more information on the data layers used in the assessment, please refer to the Land Assessment Study Process and Methodology document available here:

http://www.sfwmd.gov/portal/page/portal/xrepository/sfwmd_repository_pdf/land_assessment_study_process.pdf

Model Lands, Photos



Wading birds in the model lands.

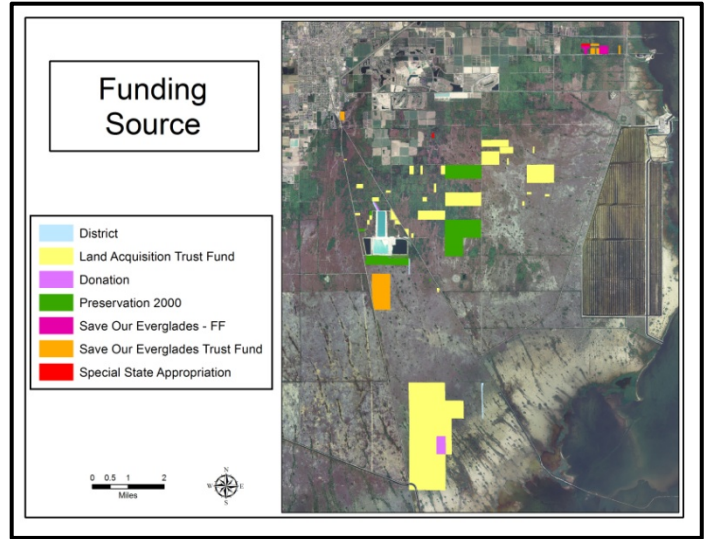
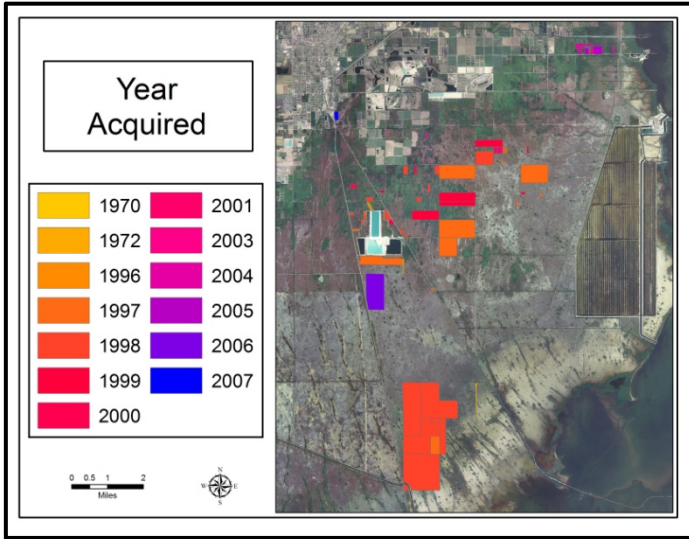
Model Lands, Photos



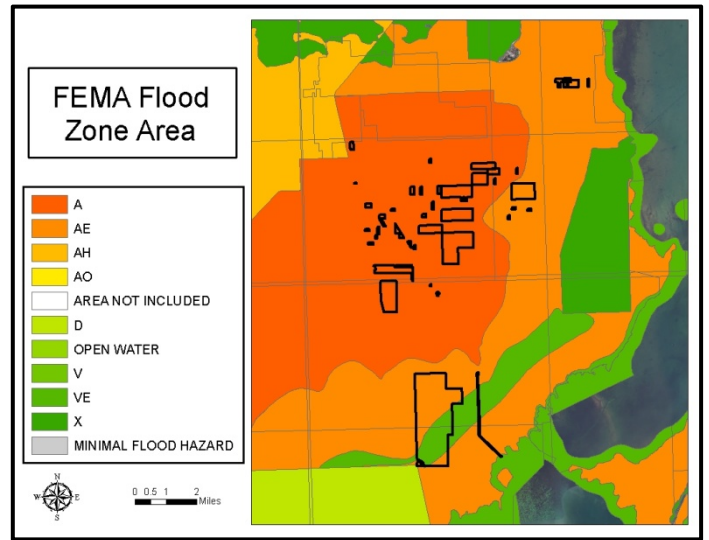
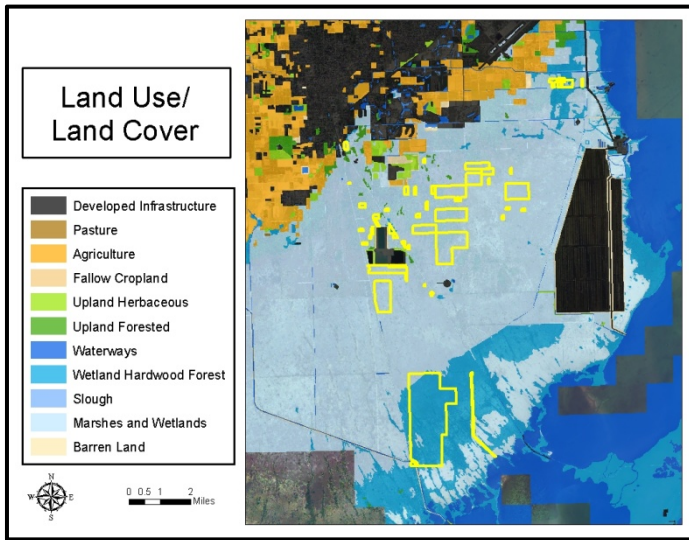
Australian pines and over-drained prairie typify the northern half of the model lands (above) and tidal salt flats dominate the southern end of the area (below, where the C-111 canal crosses under US 1).



Model Lands: Land Acquisition



Model Lands: Land Character

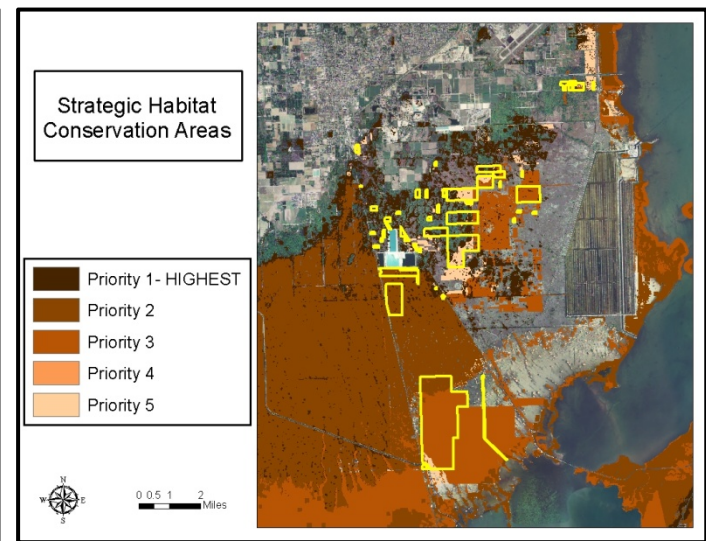
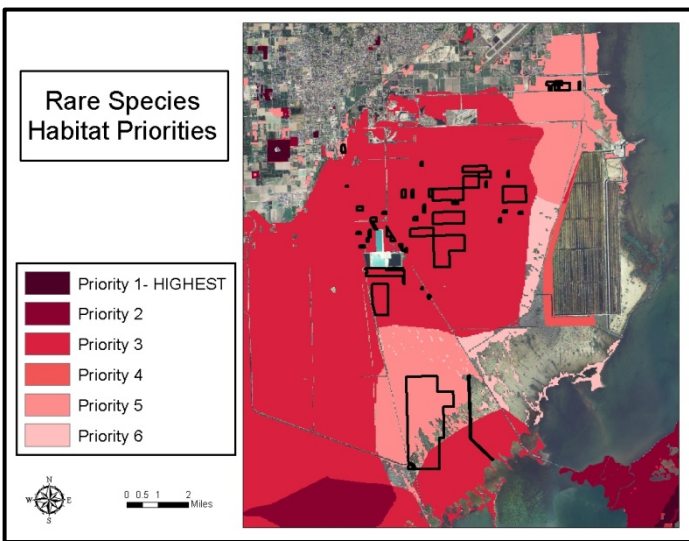
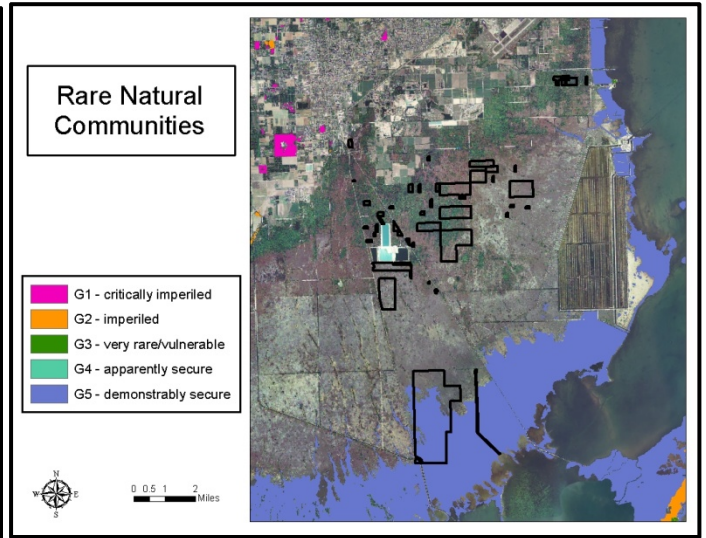
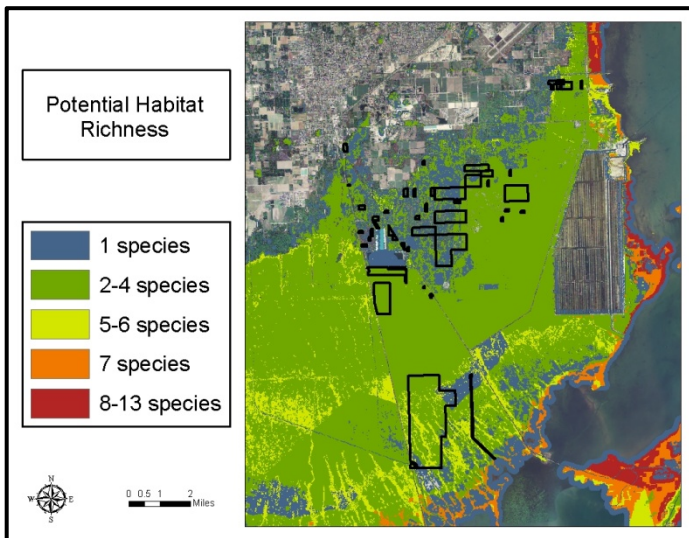


IMPORTANT DISCLAIMER: All maps in this document are a conceptual or planning tool only. The South Florida Water Management District does not guarantee or make any representation regarding the information contained herein. It is not self-executing or binding, and does not affect the interests of any persons or properties, including any present or future right or use of real property.

For more information on the data layers used in the assessment, please refer to the Land Assessment Study Process and Methodology document available here:

http://www.sfwmd.gov/portal/page/portal/xrepository/sfwmd_repository_pdf/land_assessment_study_process.pdf

Model Lands: Land Character (Continued)



IMPORTANT DISCLAIMER: All maps in this document are a conceptual or planning tool only. The South Florida Water Management District does not guarantee or make any representation regarding the information contained herein. It is not self-executing or binding, and does not affect the interests of any persons or properties, including any present or future right or use of real property.

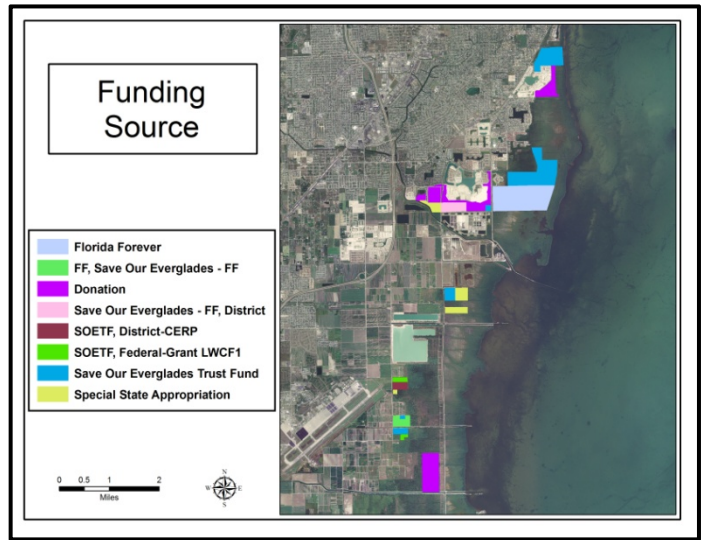
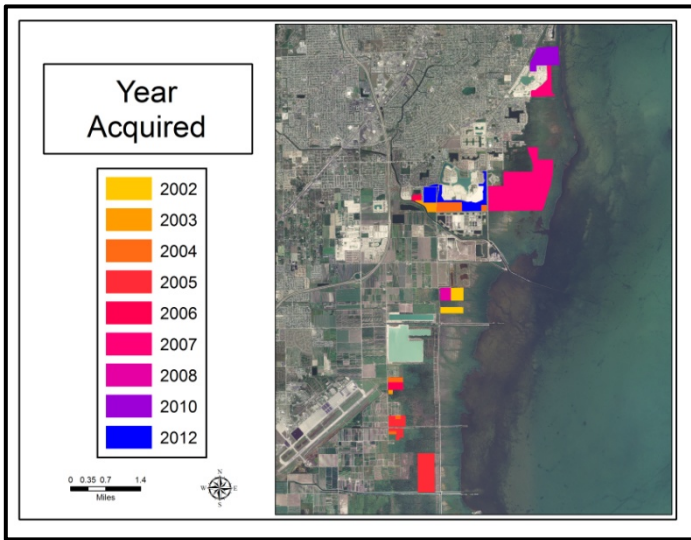
For more information on the data layers used in the assessment, please refer to the Land Assessment Study Process and Methodology document available here: http://www.sfwmd.gov/portal/page/portal/xrepository/sfwmd_repository_pdf/land_assessment_study_process.pdf

Biscayne Bay Coastal Wetlands, Photos

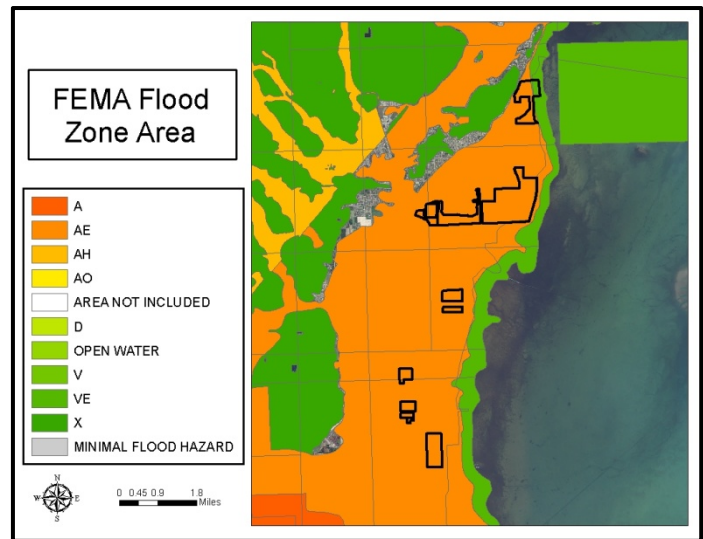
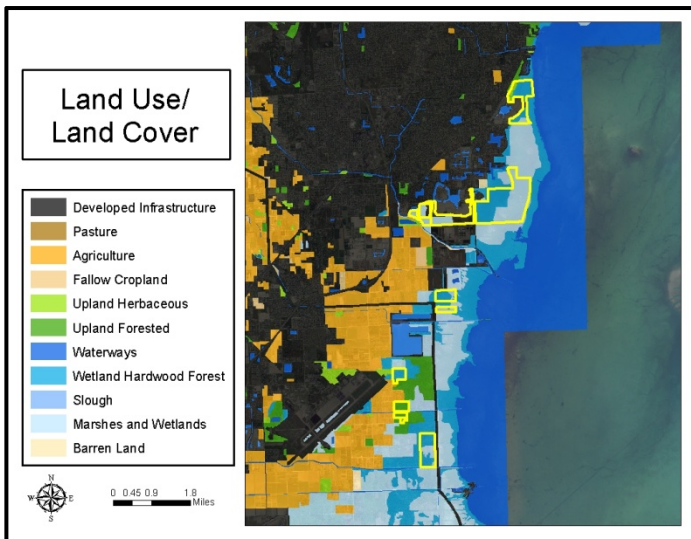


The mosquito ditches and mangroves of the Biscayne Bay properties (above) and treated Australian pine (below)

Biscayne Bay Coastal Wetlands: Land Acquisition



Biscayne Bay Coastal Wetlands: Land Character

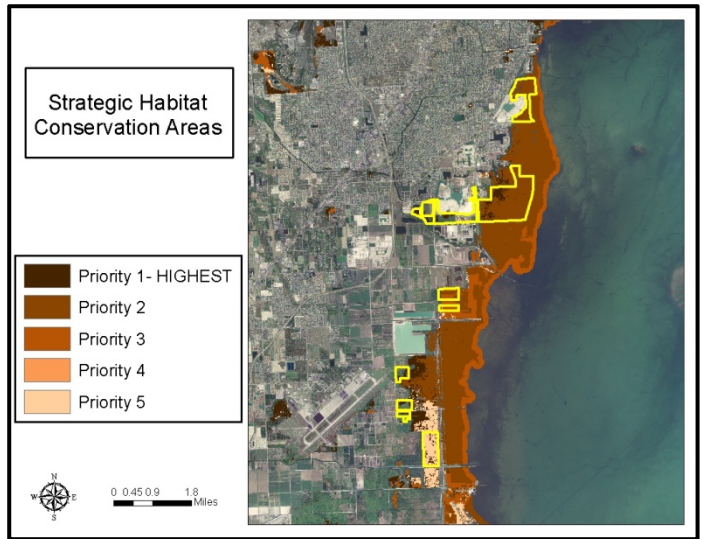
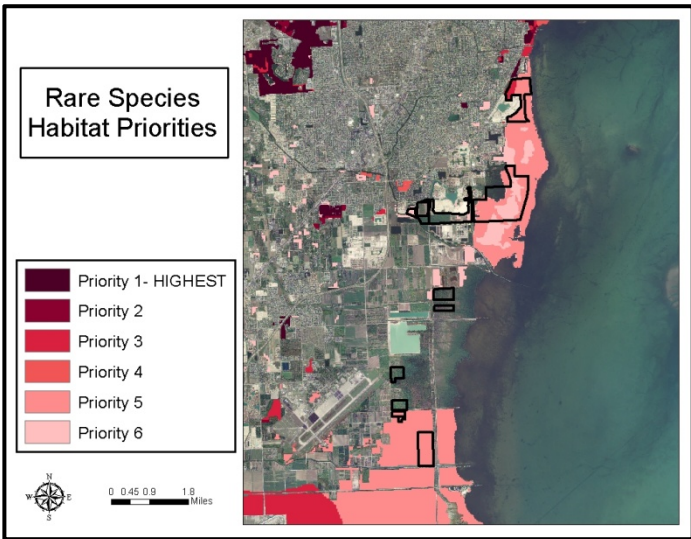
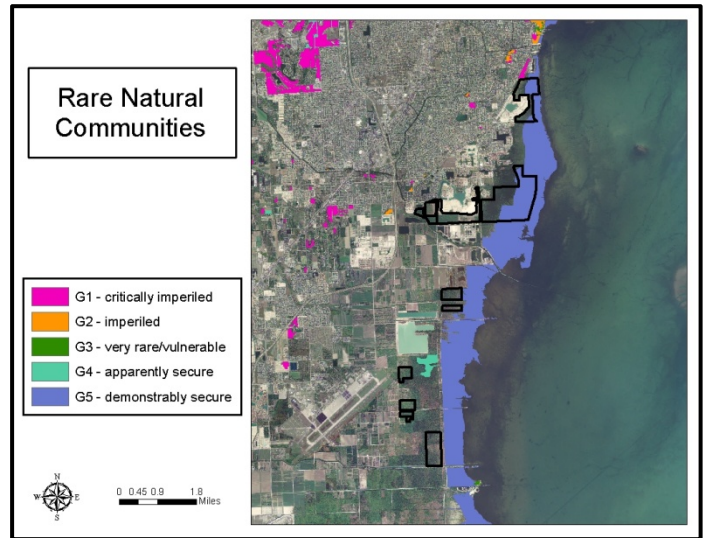
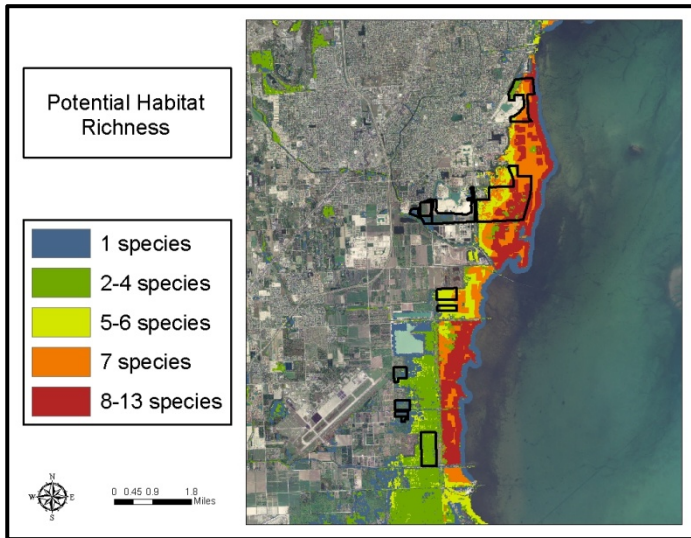


IMPORTANT DISCLAIMER: All maps in this document are a conceptual or planning tool only. The South Florida Water Management District does not guarantee or make any representation regarding the information contained herein. It is not self-executing or binding, and does not affect the interests of any persons or properties, including any present or future right or use of real property.

For more information on the data layers used in the assessment, please refer to the Land Assessment Study Process and Methodology document available here:

http://www.sfwmd.gov/portal/page/portal/xrepository/sfwmd_repository_pdf/land_assessment_study_process.pdf

Biscayne Bay Coastal Wetlands: Land Character (Continued)



IMPORTANT DISCLAIMER: All maps in this document are a conceptual or planning tool only. The South Florida Water Mngement District does not guarantee or make any representation regarding the information contained herein. It is not self-executing or binding, and does not affect the interests of any persons or properties, including any present or future right or use of real property.

For more information on the data layers used in the assessment, please refer to the Land Assessment Study Process and Methodology document available here: http://www.sfwmd.gov/portal/page/portal/xrepository/sfwmd_repository_pdf/land_assessment_study_process.pdf

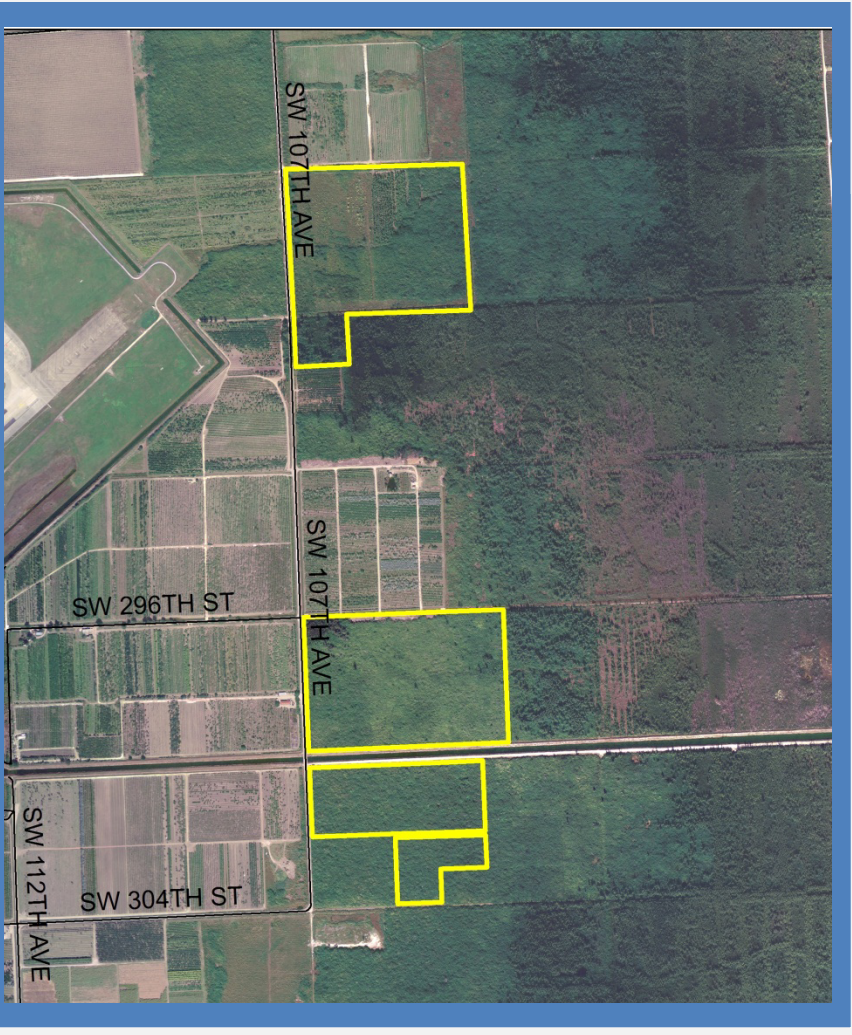
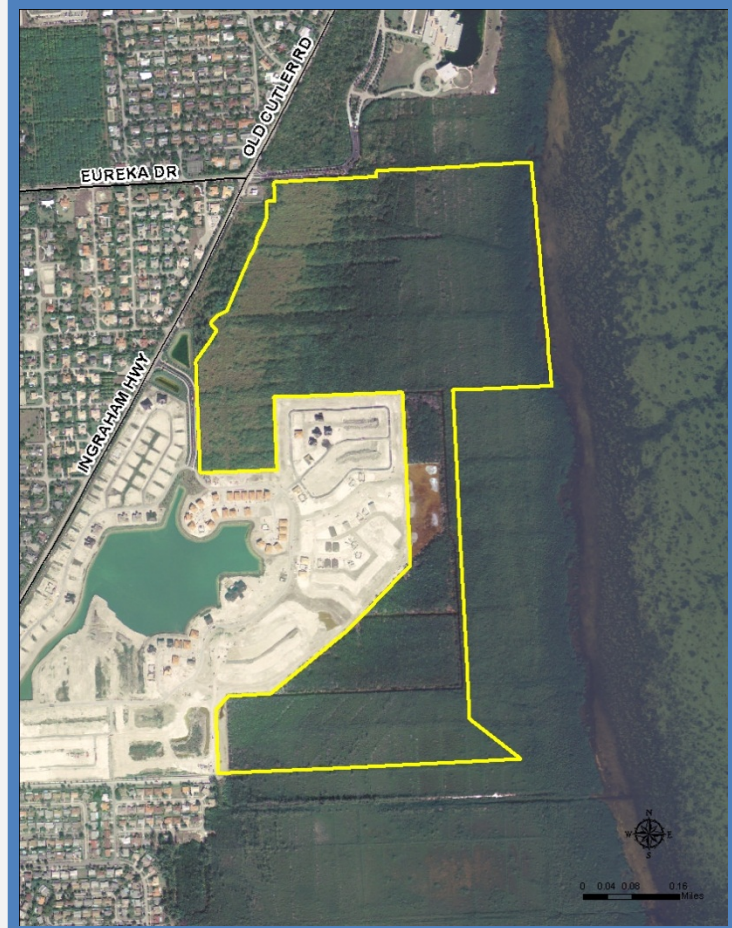
Individual Parcel Assessments

SW 184th St. Parcels

This area lies outside of the Phase 1 selected plan for the Comprehensive Everglades Restoration Plan project, the site is predominantly mangroves with a transitional upland community on the west side. ~209.81 acres.

SW 107th Ave Parcels Parcel maps are in South Dade/ BBCW folder

This area lies outside of the Phase 1 selected plan for the Comprehensive Everglades Restoration Plan project, the site is predominantly invasive exotic Brazilian Pepper and Australian Pine. ~134.35 acres.



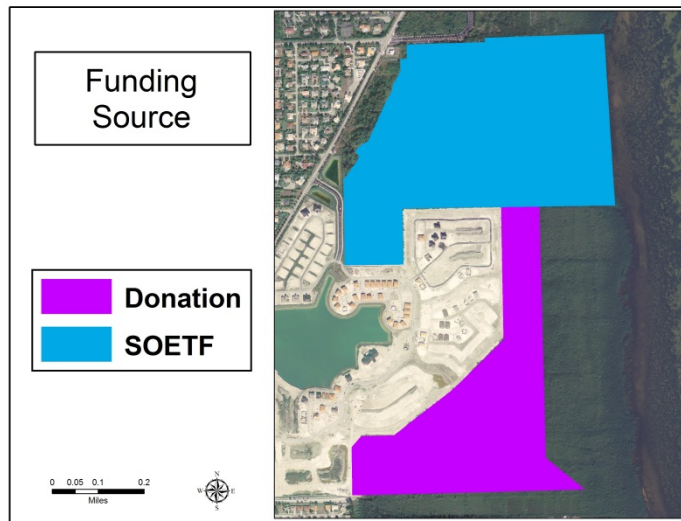
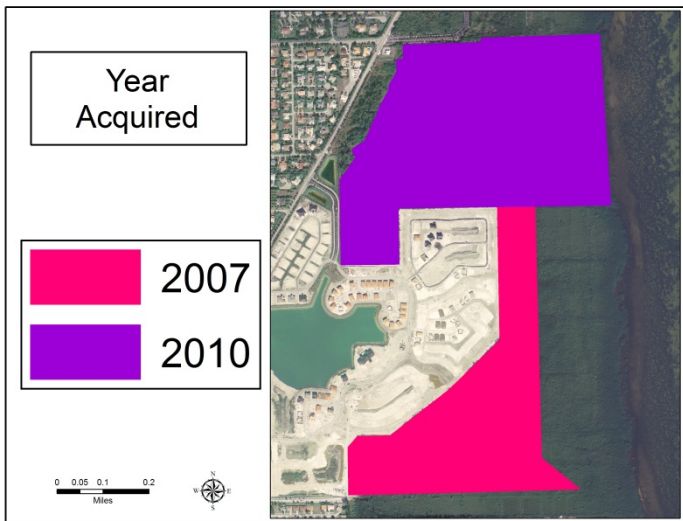
Biscayne Bay Coastal Wetlands, 184th St.

Parcels: Photo

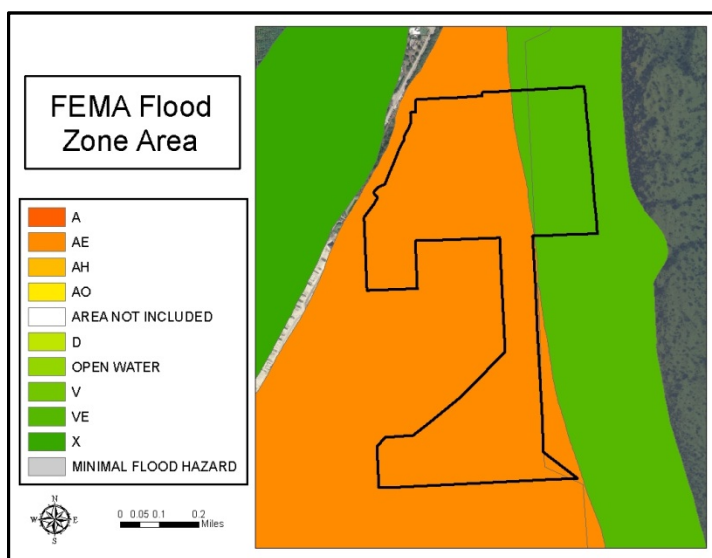
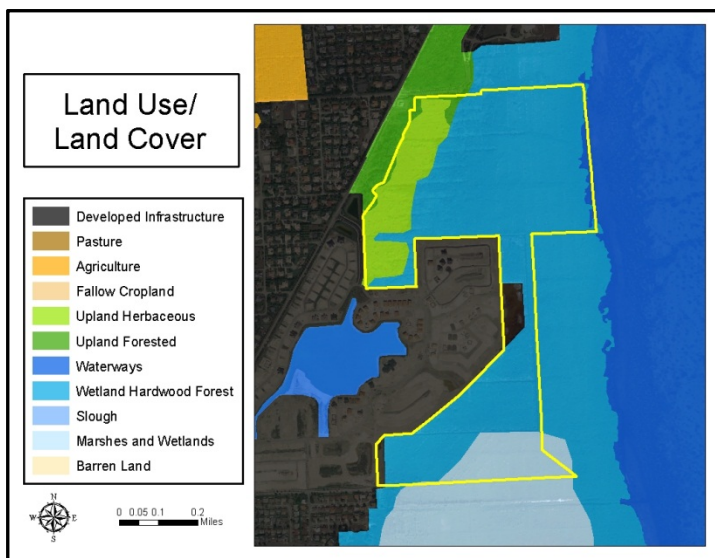


A view of the property with SW 184th St at center receding into the distance, and mangroves in the foreground.

**Biscayne Bay Coastal Wetlands, 184th St.
Parcels: Land Acquisition**



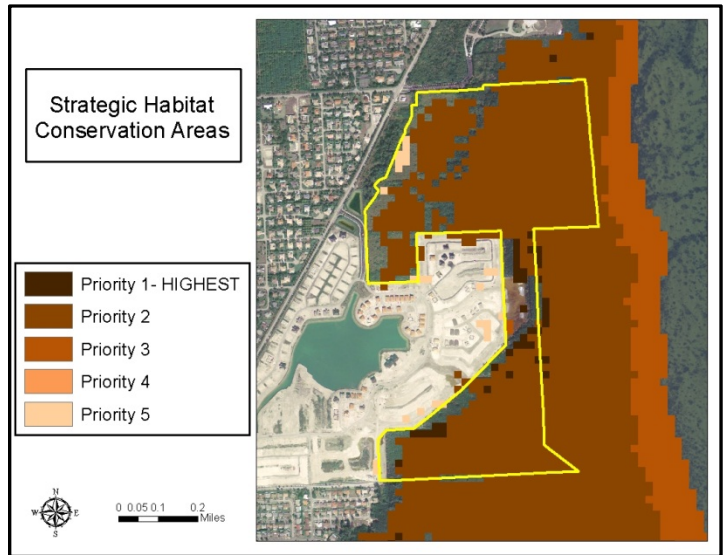
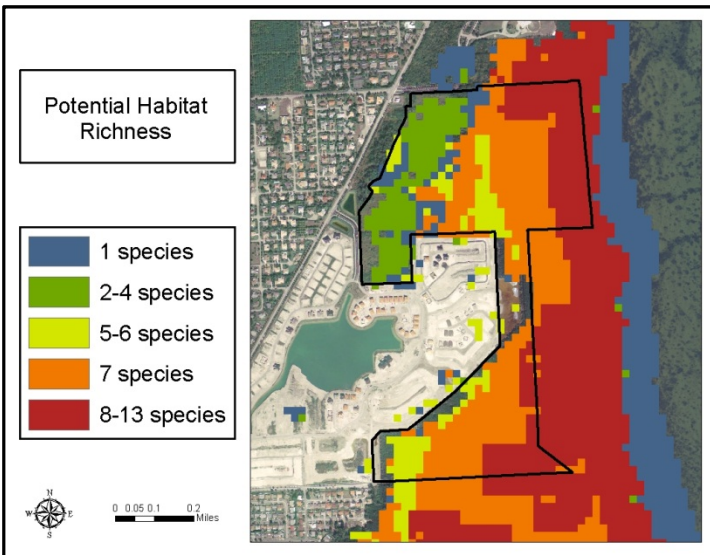
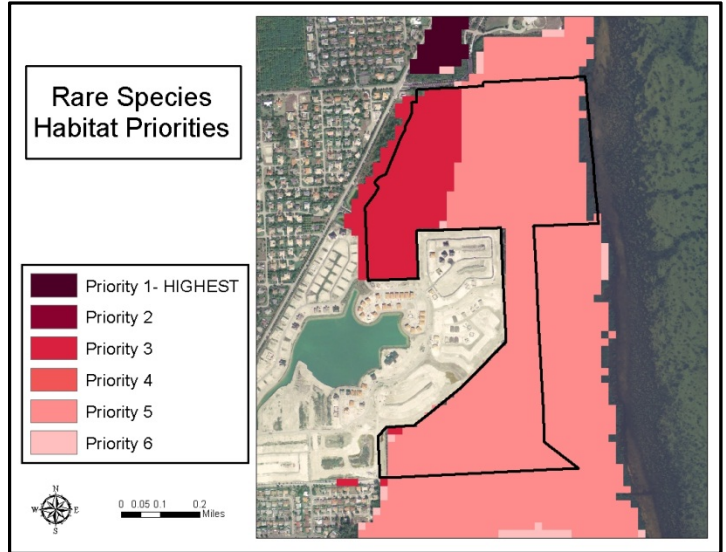
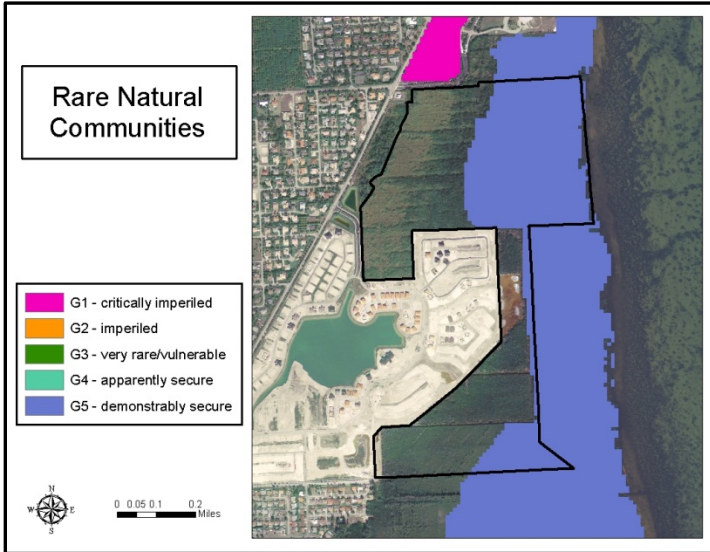
**Biscayne Bay Coastal Wetlands, 184th St.
Parcels: Land Character**



IMPORTANT DISCLAIMER: All maps in this document are a conceptual or planning tool only. The South Florida Water Management District does not guarantee or make any representation regarding the information contained herein. It is not self-executing or binding, and does not affect the interests of any persons or properties, including any present or future right or use of real property.

For more information on the data layers used in the assessment, please refer to the Land Assessment Study Process and Methodology document available here: http://www.sfwmd.gov/portal/page/portal/xrepository/sfwmd_repository_pdf/land_assessment_study_process.pdf

**Biscayne Bay Coastal Wetlands, 184th St.
Parcels: Land Character (Continued)**



IMPORTANT DISCLAIMER: All maps in this document are a conceptual or planning tool only. The South Florida Water Mngement District does not guarantee or make any representation regarding the information contained herein. It is not self-executing or binding, and does not affect the interests of any persons or properties, including any present or future right or use of real property.

For more information on the data layers used in the assessment, please refer to the Land Assessment Study Process and Methodology document available here: http://www.sfwmd.gov/portal/page/portal/xrepository/sfwmd_repository_pdf/land_assessment_study_process.pdf

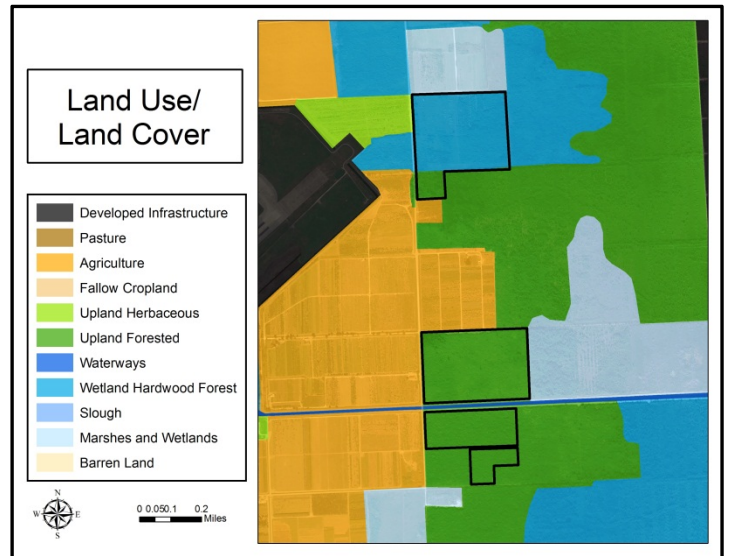
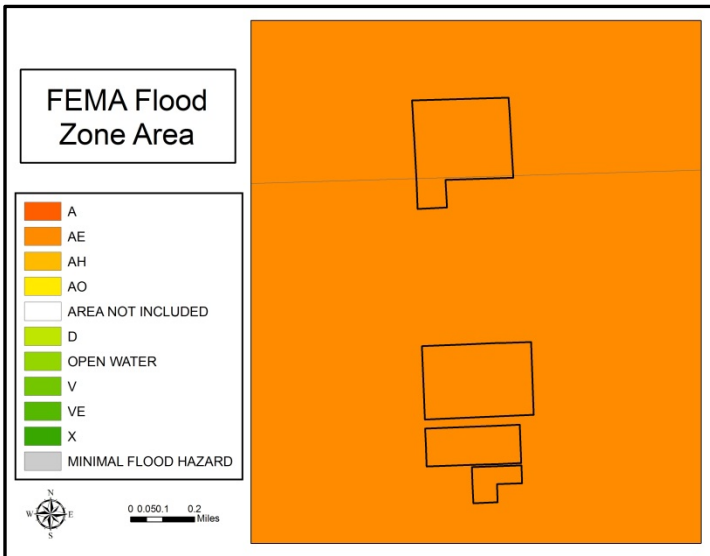
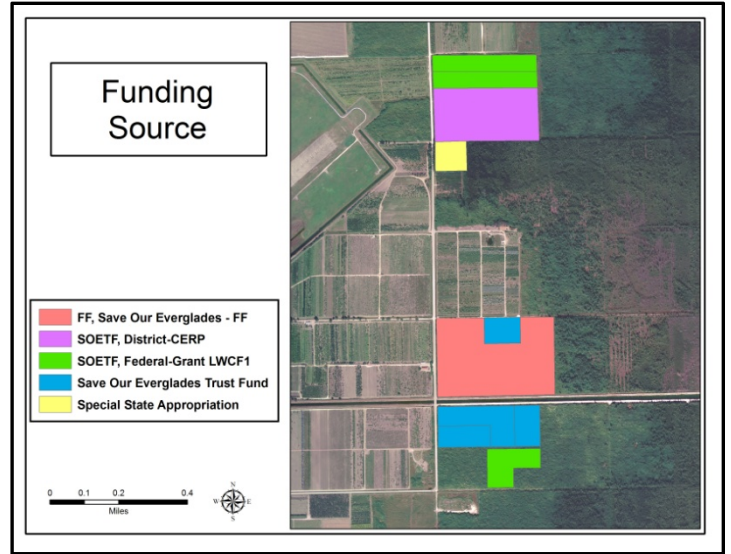
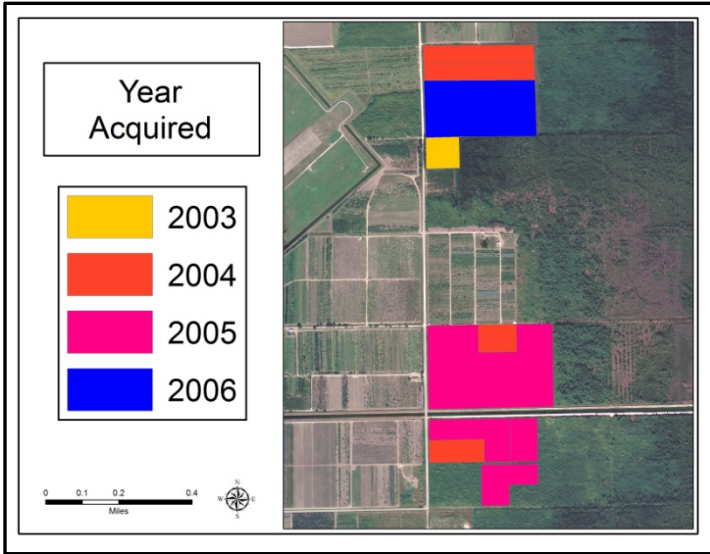
Biscayne Bay Coastal Wetlands, 107th Ave.

Parcels: Photos



This property is largely covered by invasive exotic Brazilian pepper and Australian pines

**Biscayne Bay Coastal Wetlands, 107^h Ave.
Parcels: Land Character**

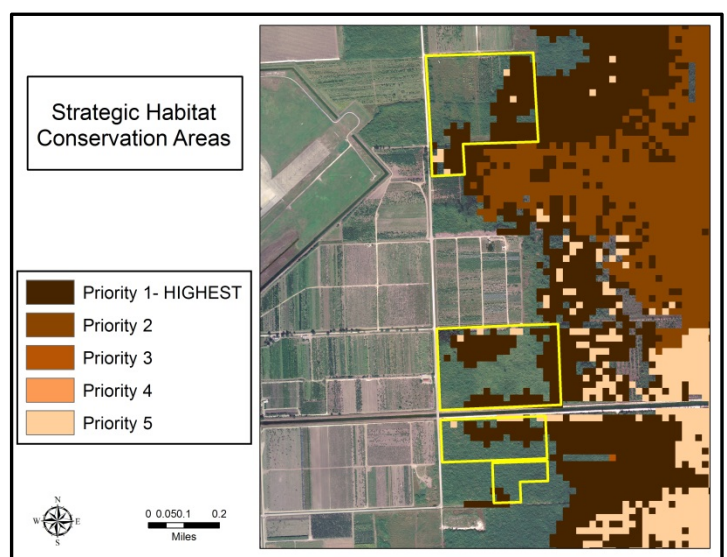
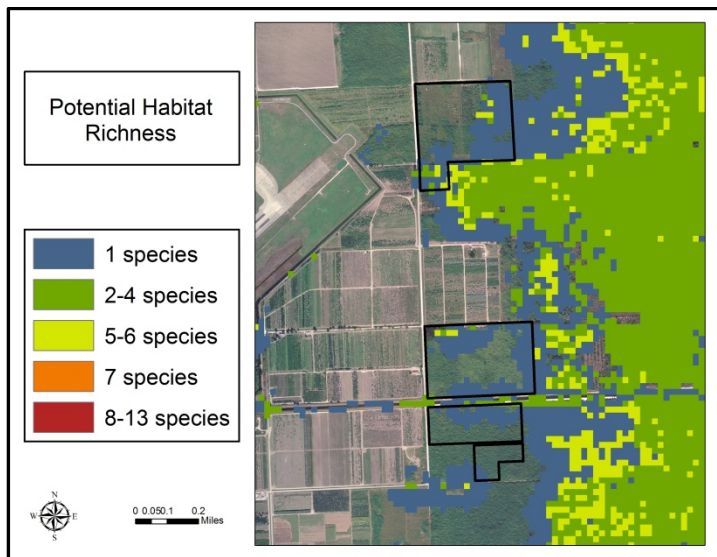
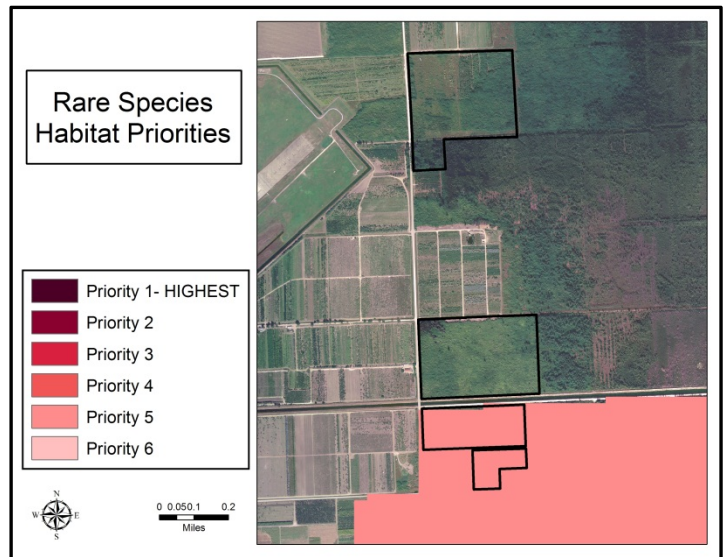
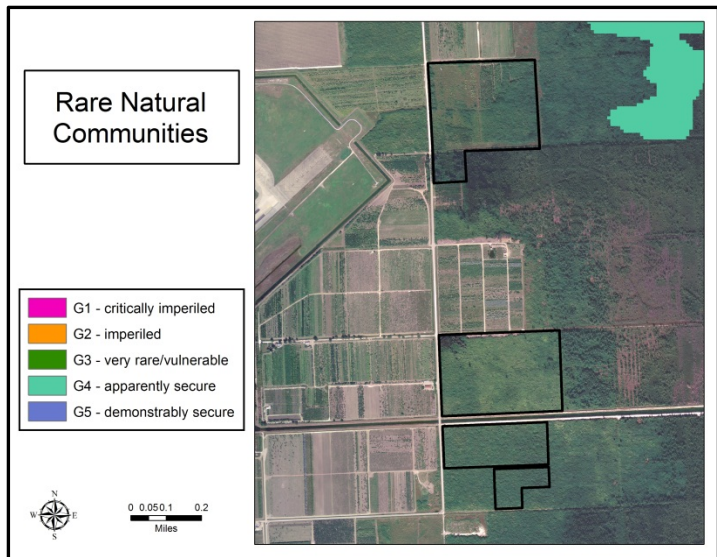


IMPORTANT DISCLAIMER: All maps in this document are a conceptual or planning tool only. The South Florida Water Mngement District does not guarantee or make any representation regarding the information contained herein. It is not self-executing or binding, and does not affect the interests of any persons or properties, including any present or future right or use of real property.

For more information on the data layers used in the assessment, please refer to the Land Assessment Study Process and Methodology document available here: http://www.sfwmd.gov/portal/page/portal/xrepository/sfwmd_repository_pdf/land_assessment_study_process.pdf

**Biscayne Bay Coastal Wetlands, 107^h Ave.
Parcels: Land Character (Continued)**

This area lies outside of the Phase 1 selected plan for the



IMPORTANT DISCLAIMER: All maps in this document are a conceptual or planning tool only. The South Florida Water Management District does not guarantee or make any representation regarding the information contained herein. It is not self-executing or binding, and does not affect the interests of any persons or properties, including any present or future right or use of real property.

For more information on the data layers used in the assessment, please refer to the Land Assessment Study Process and Methodology document available here: http://www.sfwmd.gov/portal/page/portal/xrepository/sfwmd_repository_pdf/land_assessment_study_process.pdf