

C-139 Annex

Palm Beach and Hendry Counties

District fee-simple ownership ~ 15,000 acres

Other public fee-simple ownership ~ 0 acres

Area under other protective restriction
(conservation easement, platted preserve area, etc.)
~ 0 acres

Site Overview

Purchased in 2010 with District funding, nearly 15,000 acres of this citrus grove will be restored as mitigation for impacts associated with rock-mining activities. The site will be predominantly wet prairie with scattered cypress domes, a couple tree-island hammocks, and many depression marshes and slough-ways.

Assessment Units

None

Core Mission Value

This project supports water quality by removing 10,000 acres of citrus production from discharging into the everglades, and by allowing water-levels in the adjacent stretch of the L-3 to be staged higher which would enhance the performance of the Stormwater Treatment Areas. The site also supports the natural systems restoration and water supply missions.

Other Resource Value

The restored site will be heavily utilized by wildlife. It is anticipated that the prairie will contain high quality browse to support a robust base of the food chain. The numerous natural depression marshes and constructed deep-water sloughs will provide ample year-round water sources. The site will be excellent habitat for cara caras, turkeys, deer, raptors, wading birds, muskrats, panthers, black bear, and many others.

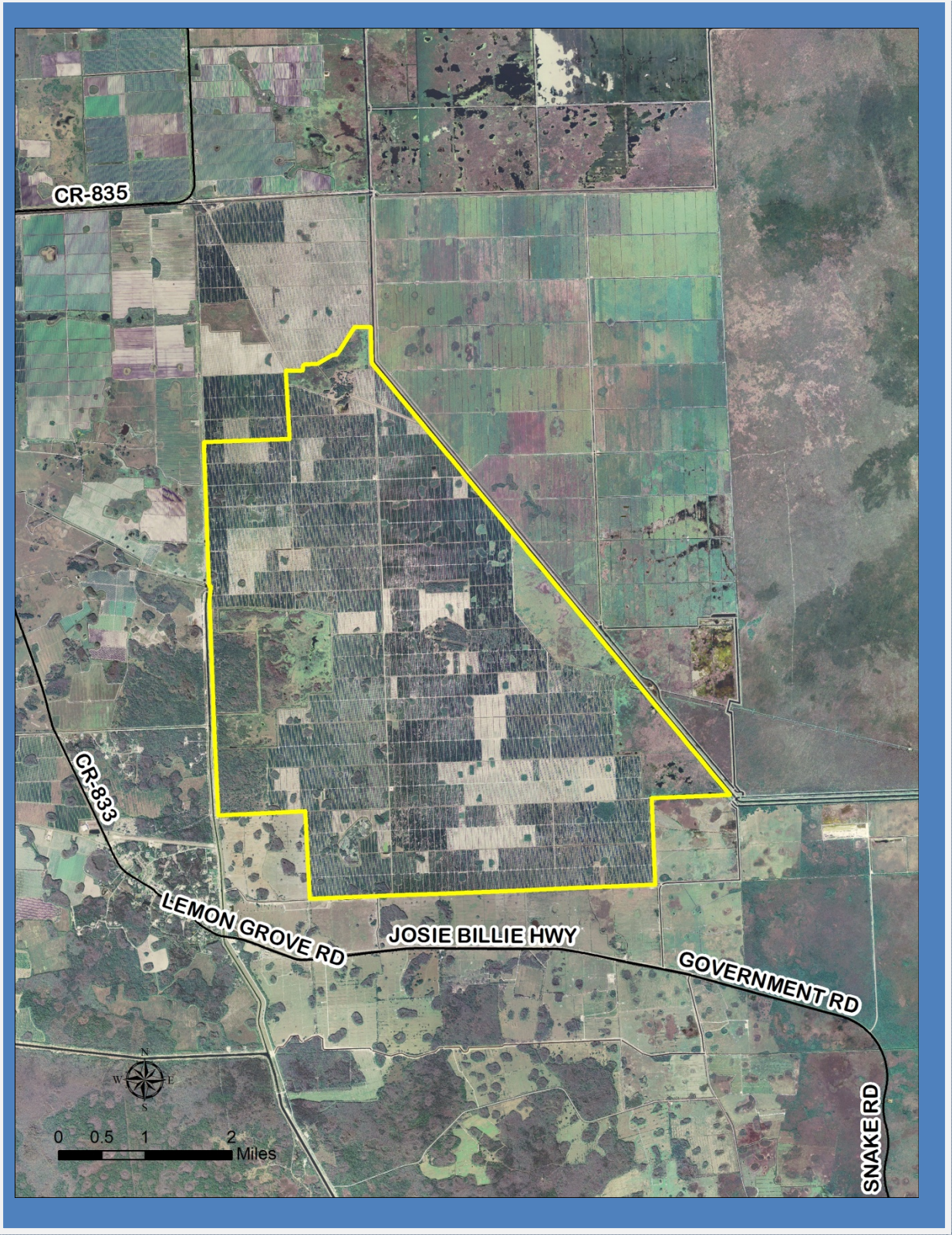
Management Issues

The restoration is being phased-in in two major phases to coincide with the production of sufficient groundcover nurse-crop.

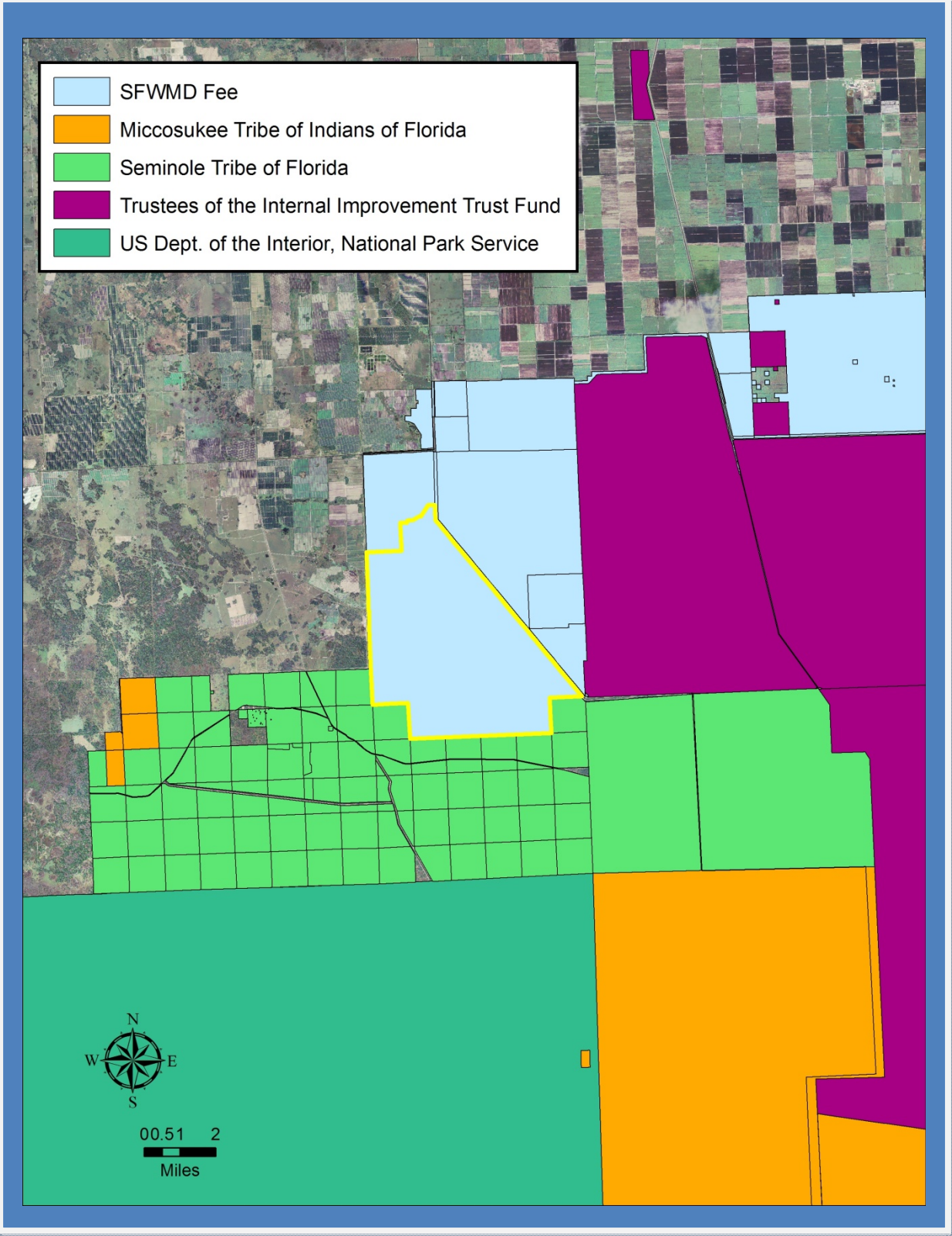
Public Use and Recreation Value

There are currently no developed public use facilities on site.

C-139 Annex - District Ownership



C-139 Annex Area Public Land



C-139 Annex, Photos



An area of the grove no longer in production (above), and a view showing the grove on the left and a cypress-dominated water retention area on the right (below)



C-139 Annex, Photos



An area of former prairie near the L-28 Interceptor canal, overgrown with young oaks.



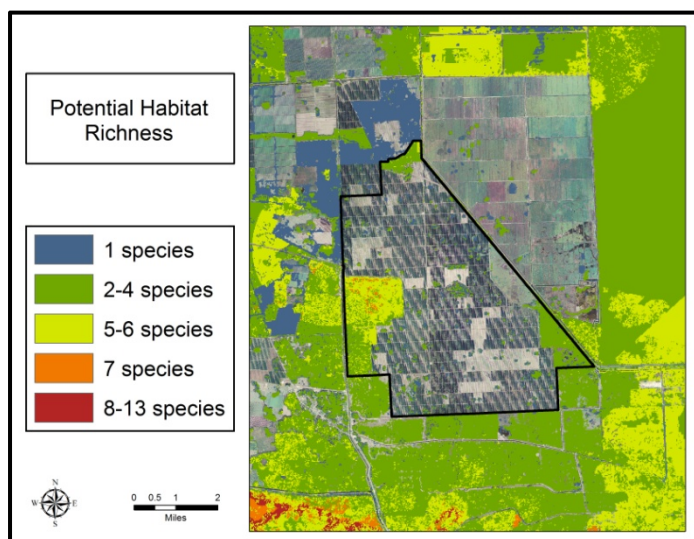
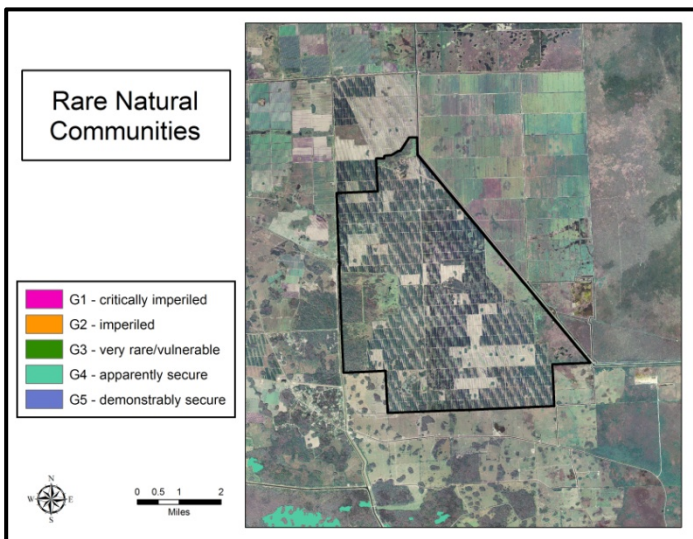
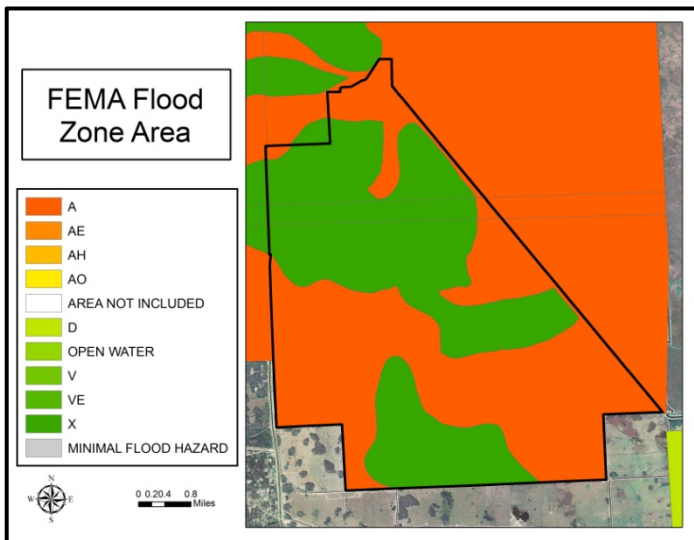
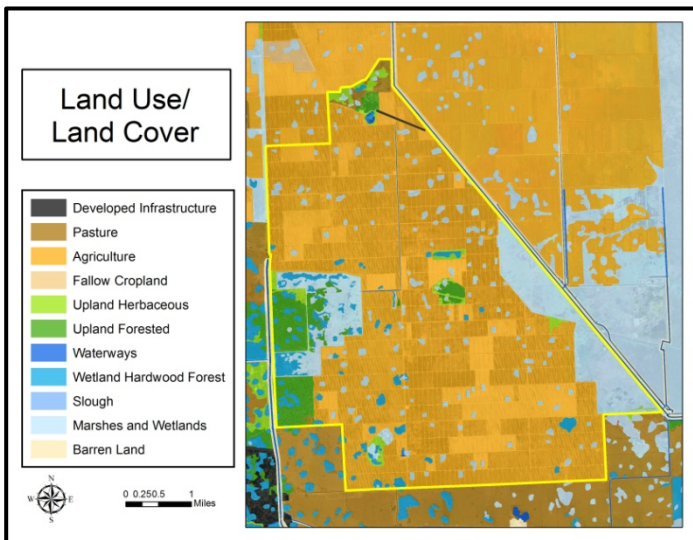
Cypress and the exotic para grass within a water retention area

C-139 Annex, Photos



An oak hammock (top), and a former depression marsh overgrown with wax myrtle, Brazilian pepper, and salt bush (below).

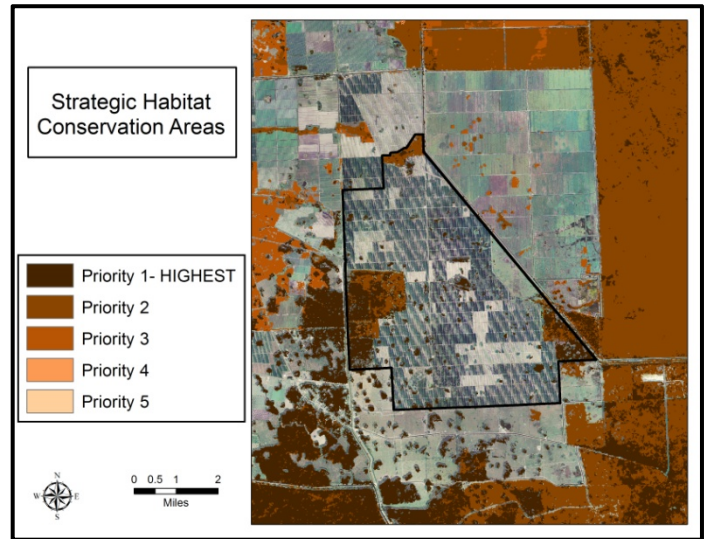
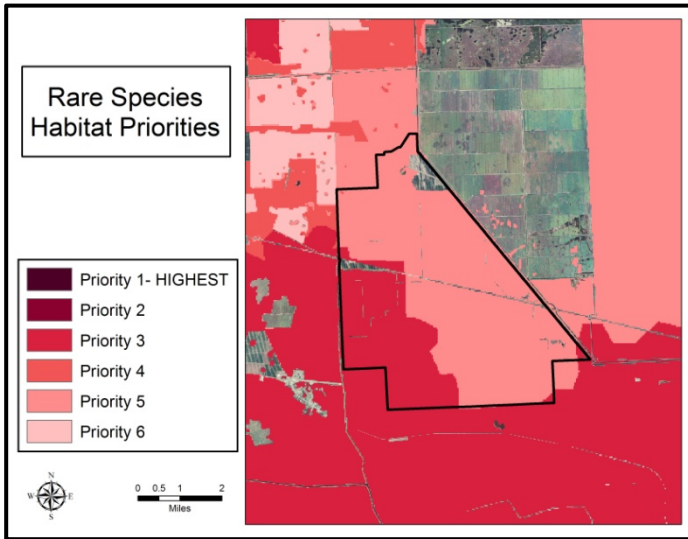
C-139 Annex: Land Character



IMPORTANT DISCLAIMER: All maps in this document are a conceptual or planning tool only. The South Florida Water Management District does not guarantee or make any representation regarding the information contained herein. It is not self-executing or binding, and does not affect the interests of any persons or properties, including any present or future right or use of real property.

For more information on the data layers used in the assessment, please refer to the Land Assessment Study Process and Methodology document available here: http://www.sfwmd.gov/portal/page/portal/xrepository/sfwmd_repository_pdf/land_assessment_study_process.pdf

C-139 Annex: Land Character (Continued)



IMPORTANT DISCLAIMER: All maps in this document are a conceptual or planning tool only. The South Florida Water Management District does not guarantee or make any representation regarding the information contained herein. It is not self-executing or binding, and does not affect the interests of any persons or properties, including any present or future right or use of real property.

For more information on the data layers used in the assessment, please refer to the Land Assessment Study Process and Methodology document available here: http://www.sfwmd.gov/portal/page/portal/xrepository/sfwmd_repository_pdf/land_assessment_study_process.pdf