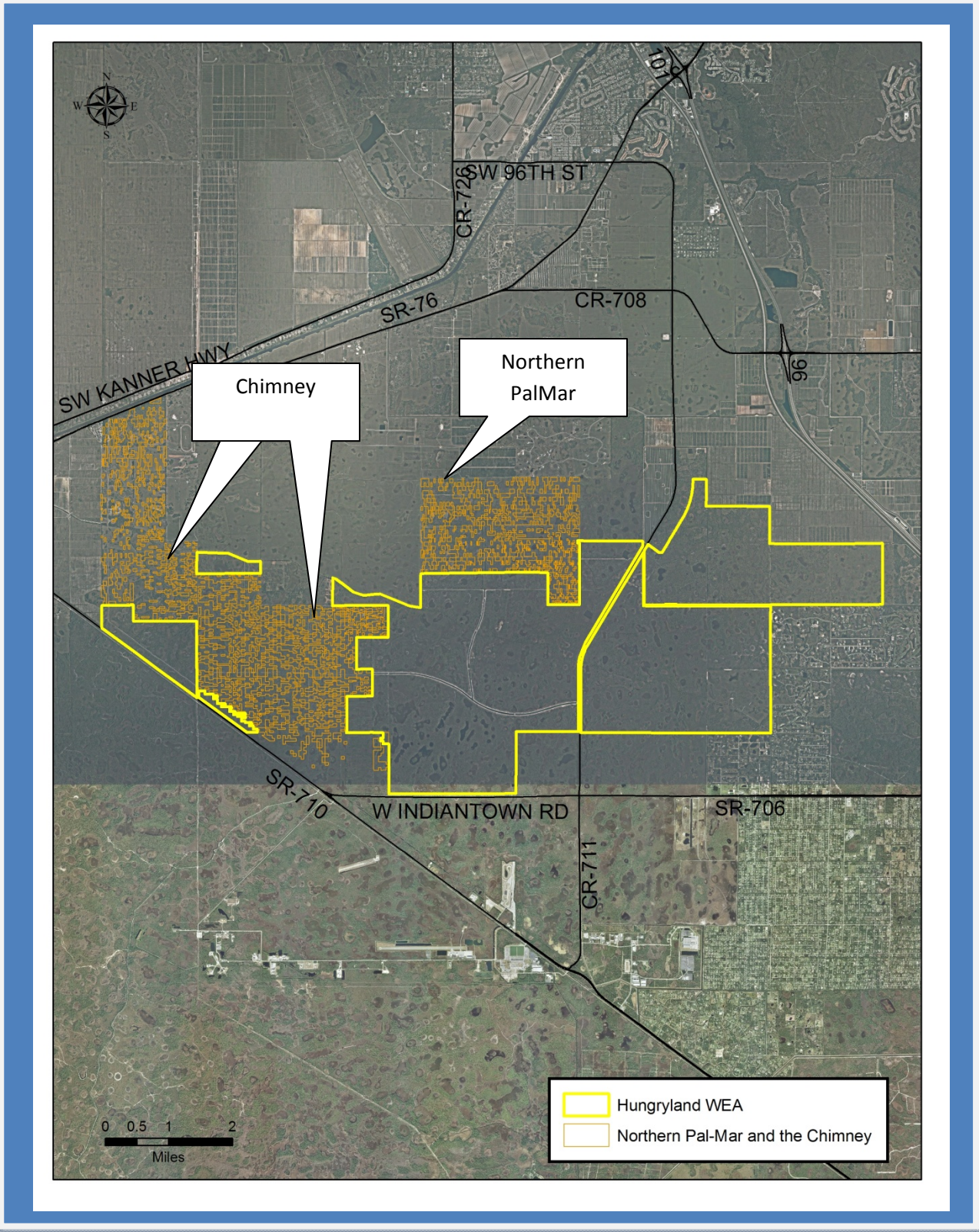


**Pal-Mar Area Lands**



IMPORTANT DISCLAIMER: All maps in this document are a conceptual or planning tool only. The South Florida Water Management District does not guarantee or make any representation regarding the information contained herein. It is not self-executing or binding, and does not affect the interests of any persons or properties, including any present or future right or use of real property.

**Pal-Mar**

Palm Beach and Martin Counties

District fee-simple ownership ~17,083 acres

Other public fee-simple ownership ~ 7,759 acres

Area under other protective restriction (conservation easement, platted preserve area, etc.) ~ 929 acres

**Site Overview**

Pal-Mar contains a broad flat area of wetlands known as the Hungryland Slough. The area contains hundreds of small lakes and depression marshes, interconnected by seasonal flowways made up of grassy wet prairies and cypress swamps. The central portion has a major drainage ditch, but with no outfall, so it functions more like a long linear lake.

Palm beach County has acquired several thousand acres of land south of the Palm Beach County line. The District owns ~2,930 acres outright, and has shared title with Martin county over ~9,535 acres, and shared title with the State over ~5,158 acres. Martin County owns ~372 acres outright, and the U.S. Army Corps of Engineers own ~40 acres.

The northeastern-most portion of the project is known as Nine-Gems, Pal-Mar East, or the William H. Lee unit (2,800 acres). This area was a former cattle range with native pasture over the western three sections and improved pasture over the eastern portion. It had been artificially drained with small agricultural drainage ditches, and infested with exotics like melaleuca, old world climbing fern, and Brazilian pepper. The District acquired the property cooperatively with Martin County, the Natural Resources Conservation Service, and the Florida Communities Trust. The District and the County completed the first phase of the restoration plan by removing the exotics, plugging the drainage ditches with approximately 140 ditch plugs, shredding overgrown palmettos, and reintroducing prescribed fire. The District and the County also created a trailhead and parking area to accommodate public use. The planned second phase of the restoration would involve re-establishing sheetflow with Hungryland and allow water to flow across Pal-Mar East and into the Cypress Creek canal to help correct year-round flows to the Northwest Fork of the Loxahatchee River.

**Assessment Units**

**Hungryland WEA**

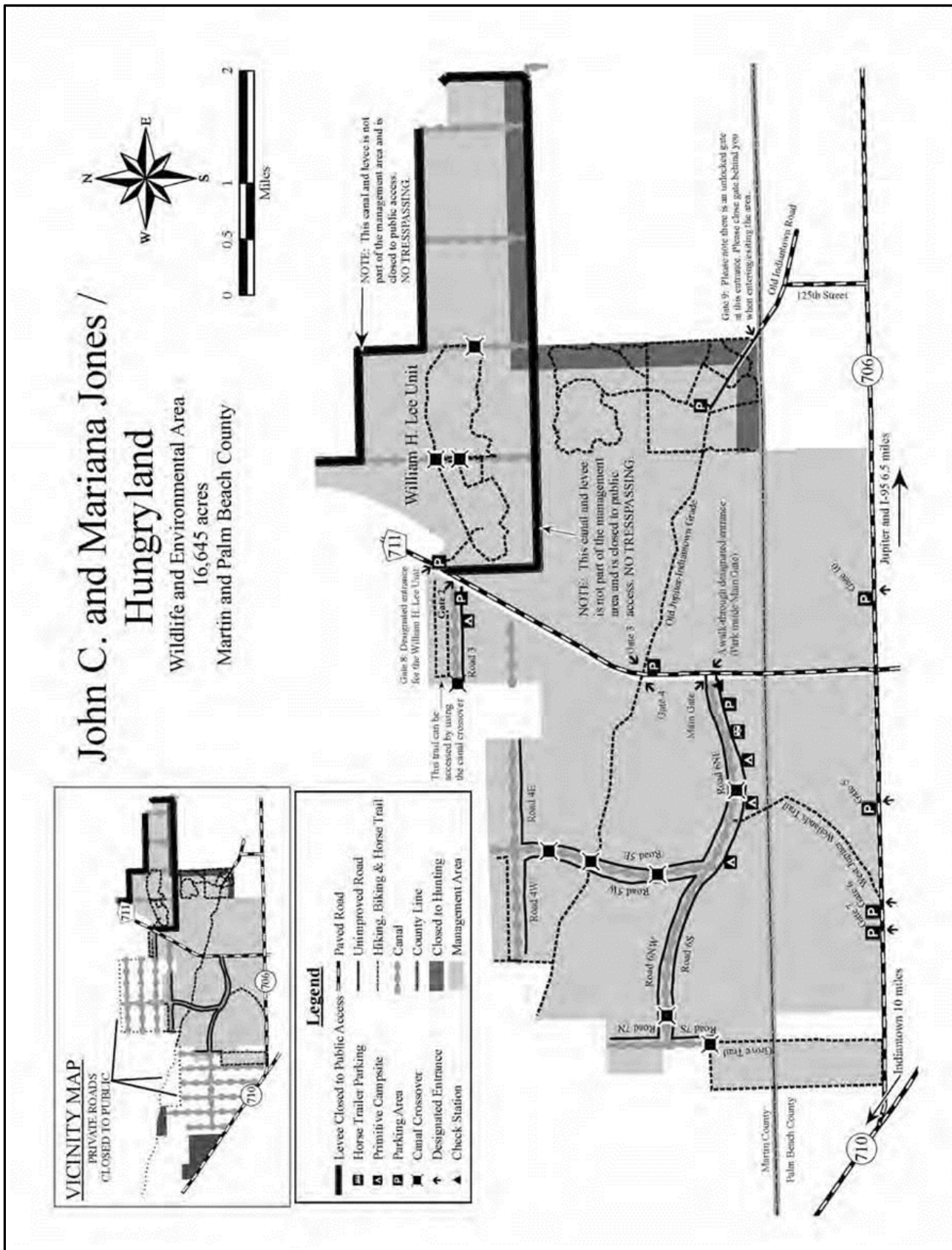
This is the area of large-scale contiguous public ownership that has been established as the John C. and Mariana Jones Hungryland Wildlife and Environmental Area.

**Northern Pal-Mar and the Chimney**

This area contains nearly 1900 parcels of land that had been subdivided into 0.2 to 5 acre lots. The District and Martin County both acquired parcels within the area as they had become available for sale. Some parcels were acquired separately, but most were acquired jointly, with the County and the District sharing a percentage of the title. The remainder of the land is owned by private owners.

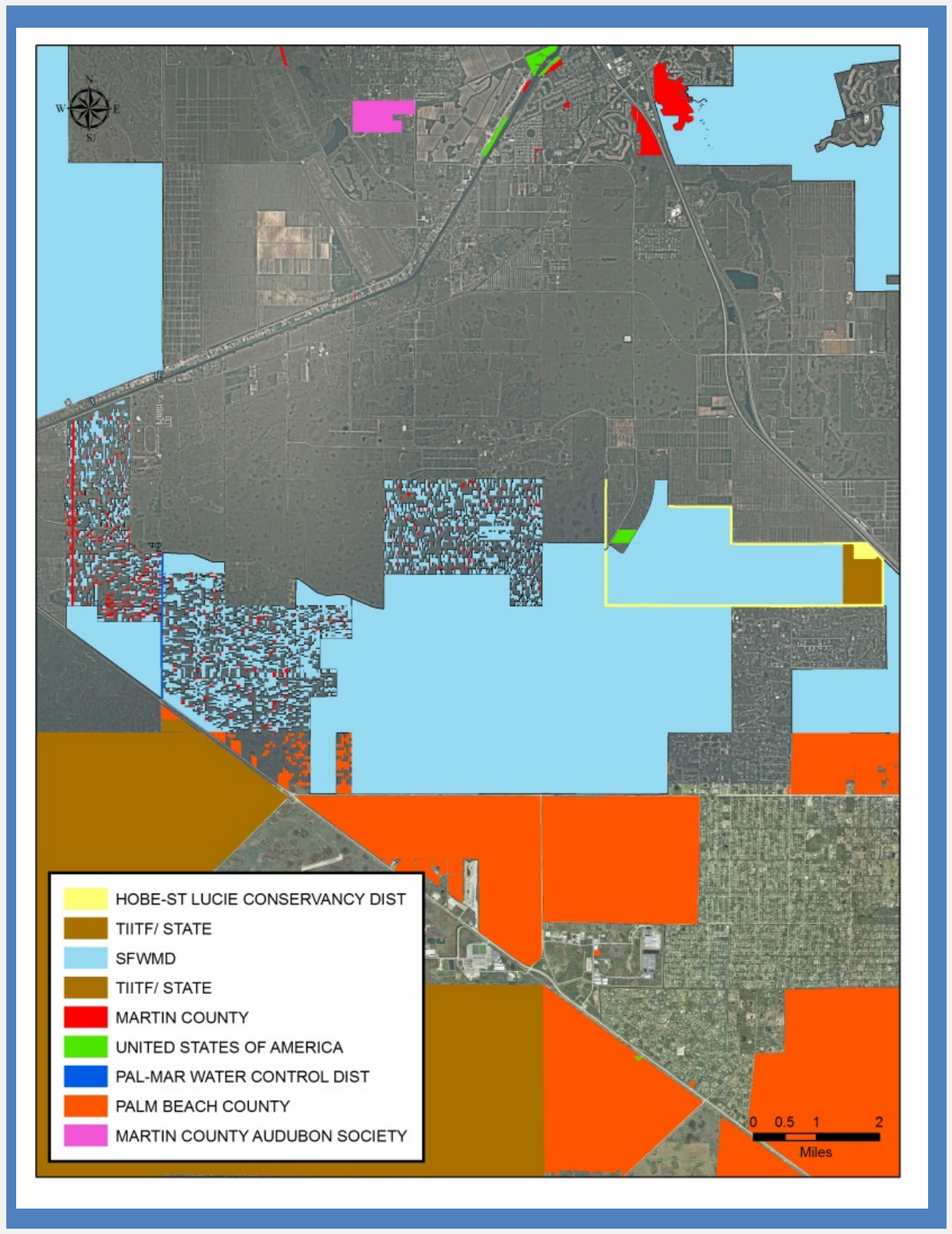


**Pal-Mar (Hungryland Slough)  
FWC Hunting and Public Use Map**



**Pal-Mar Area Public Land**

(based on county ownership records)





**PalMar**

**Assessment Unit: Hungryland WEA**

Core Mission Values

This area is characterized by long sinuous wetland flowways consisting of small depressional lakes and marshes interconnected by wet prairie, and intermixed with cypress swamp. There are scattered islands of pine flatwood throughout. While natural systems restoration and protection are the obvious core mission areas enhanced by this large wetland system, the area also provides natural storage for over 20,000 acre-feet of water. In addition broad areas of wetlands help flood control by attenuating the runoff that must be discharged through the canals. Martin County, the co-owners of the eastern sections of Hungryland, is pursuing a plan to raise the dry-season water stages in the area to further enhance flood protection. This project will also enhance water quality by extending the time in the dry season in which fresh water deliveries are made to the Loxahatchee River.

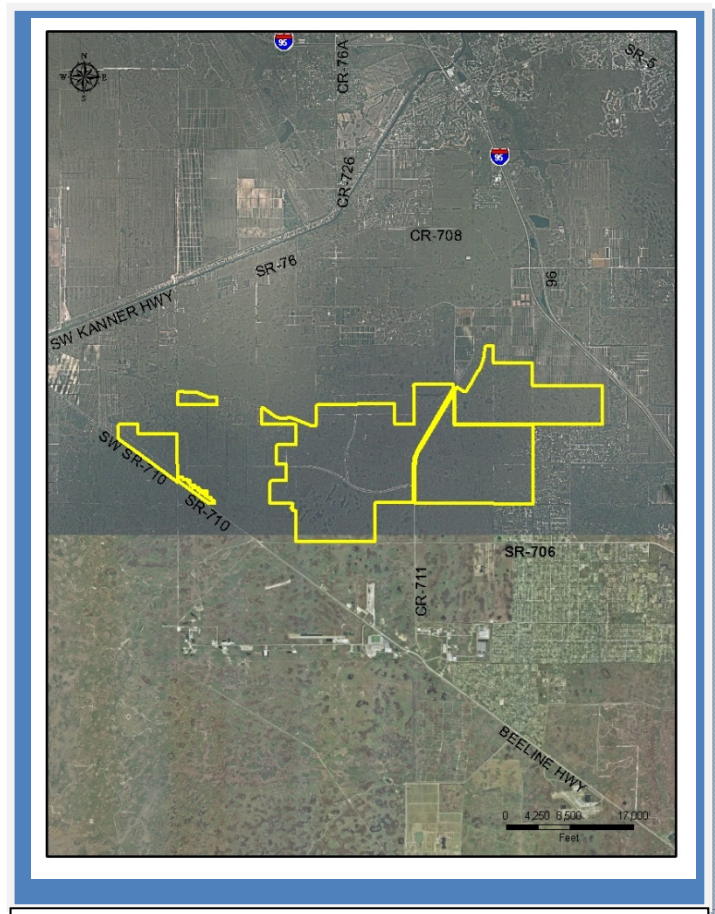
The northeasternmost portion of the site, known as Nine-Gems, PalMar East, or the William H. Lee unit, has undergone an initial phase of restoration through work that has been carried out by the District and Martin County. Approximately half of this area is subject to a natural Resources Conservation Service, Wetlands Reserve Program (WRP) easement. The other half was acquired in partnership with the Florida Communities Trust. The planned second phase of the restoration would involve re-establishing sheetflow with Hungryland and allow water to flow across Pal-Mar East and into the Cypress Creek canal to help correct year-round flows to the northwest fork of the Loxahatchee River.

Other Resource Value

The area serves as a large, diverse landscape-scale feature in its own right, but also serves as a link between Jonathan Dickinson state park to the east and the Corbett-Dupuis system to the southwest. Together, these natural lands make one of the largest conservation corridors in the State.

Management Issues

Most of the site is managed wholly by FWC, while the William H. Lee unit and the eastern sections are managed cooperatively by FWC, the District, and Martin County



**Hungryland WEA, District-owned parcels are outlined in yellow.**

Public Use and Recreation Value

The area is very popular with hikers, hunter, and equestrians. There are several shelters with picnic tables throughout the site and many miles of trails. The historic Jupiter-Indiantown grade runs through the south end of the site, and makes for an excellent bicycling opportunity.

**PalMar**

**Assessment Unit: Northern PalMar and Chimney**

Core Mission Values

The parcels within this area a mosaic of wetland and upland natural communities, some with pasture grasses. The acquisition of individual parcels aid water supply because the individual parcels that are acquired will not be consumptive users of water.

Other Resource Value

The area is predominantly a mosaic of prairie, marsh, wet flatwood, and cypress swamps. There are also areas that contain improved pasture.

Management Issues

The non-contiguous ownership within the area contributes to the cost of managing the property.

Public Use and Recreation Value

Because of the configuration of ownership in this area, there are currently no public use facilities.



**Northern PalMar and the Chimney, District-owned parcels are outlined in yellow.**



PalMar, Hungryland WEA Photos



Hungryland WEA, primarily marsh and wet prairie with scattered pockets of wet flatwood and cypress



PalMar, Hungryland WEA Photos



The southeastern portion of Hungryland is accessed by the historic Jupiter-Indiantown grade (upper right) it is an area of improved pasture, but has been undergoing hydrologic restoration, coordinated by Martin County.



PalMar, Hungryland WEA Photos



The northeastern portion of Hungryland is known as PalMar east, or nine gems, Martin County and District have been restoring the site through an initial phase of restoration. When the property was acquired (all photos, this page) it was overdrained through dozens of shallow agricultural ditches (top right), and infested with exotic species such as old world climbing fern (middle photos) and Brazilian pepper (top right).



PalMar, Hungryland WEA Photos



The first phase of restoration on PalMar east, or nine gems, included reintroducing prescribed fire (top), treating exotics (middle left and far left), plugging all of the old agricultural ditches), and shredding the overgrown understory.



**PalMar, Hungryland WEA Photos**



**These photos show the remarkable improvement to PalMar east following the first phase of restoration.**





**PalMar, Northern PalMar Photos**



**The wet flatwood that characterize the northern PalMar area.**



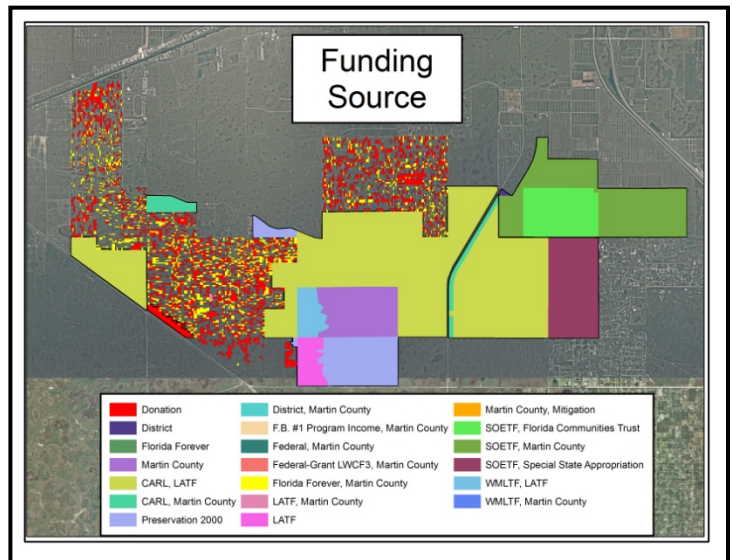
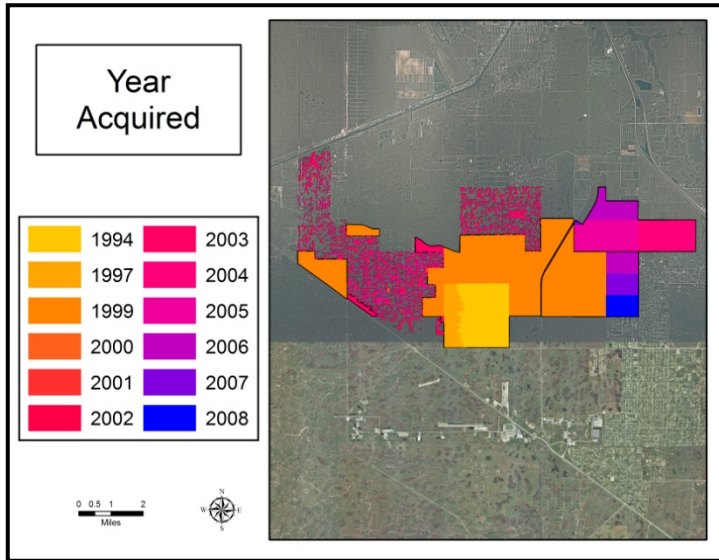
PalMar, Chimney Photos



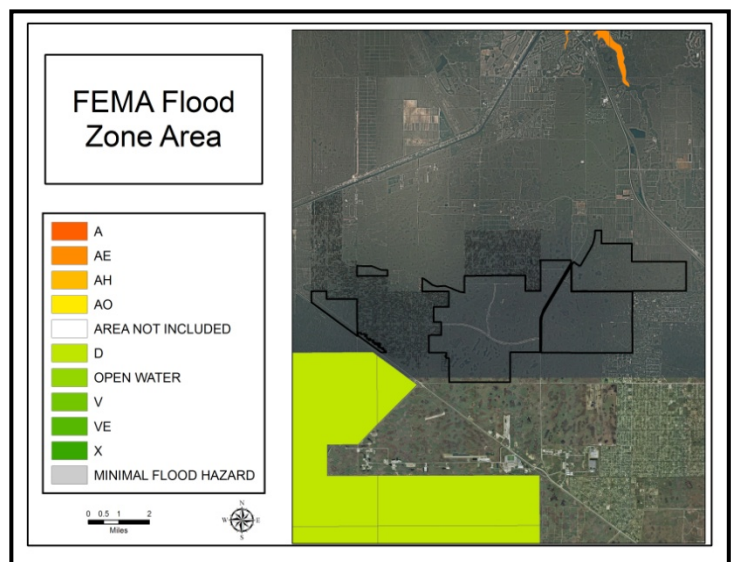
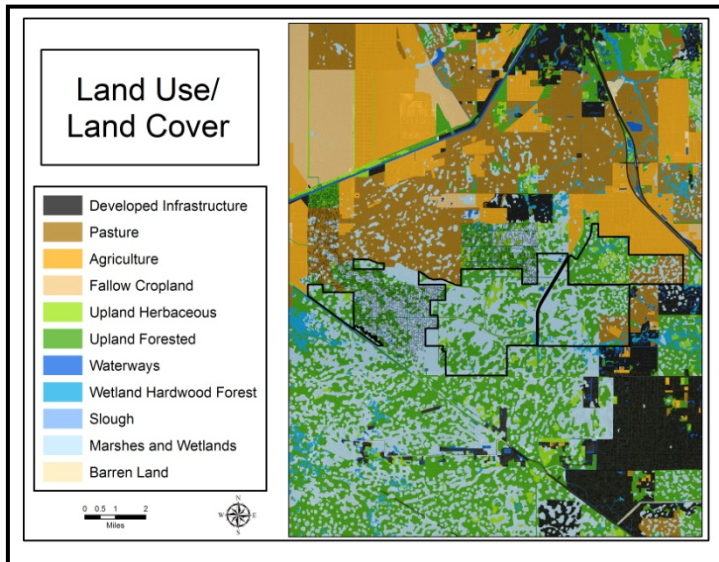
The chimney area contains unmanaged flatwood and unused cattle pasture.



### PalMar (Both Units): Land Acquisition



### PalMar (Both Units): Land Character

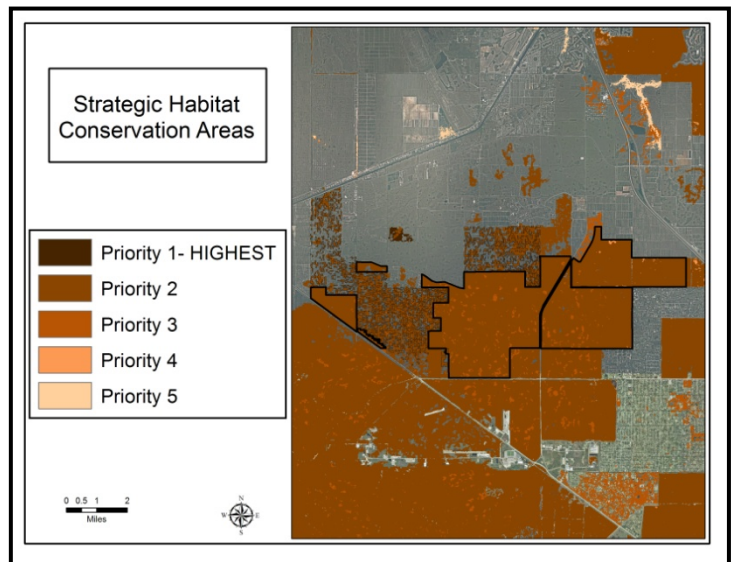
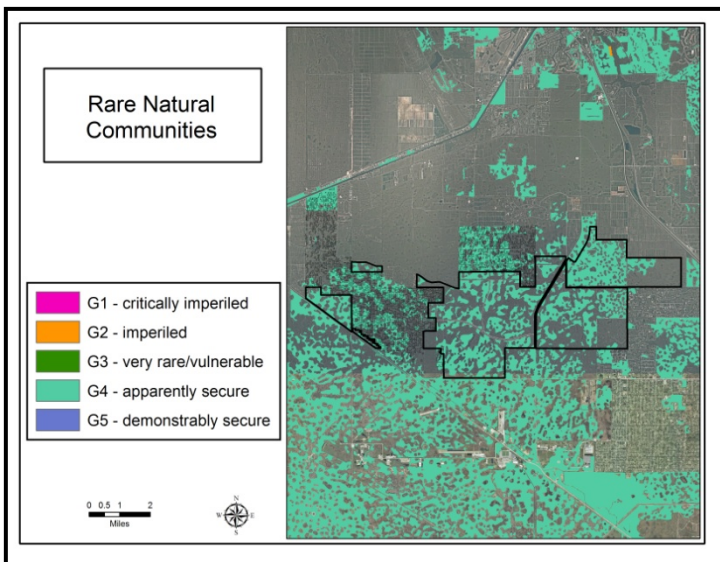
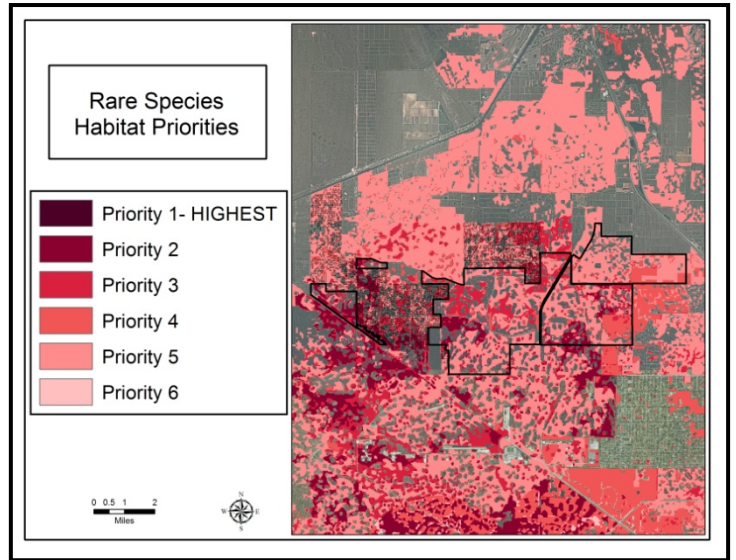
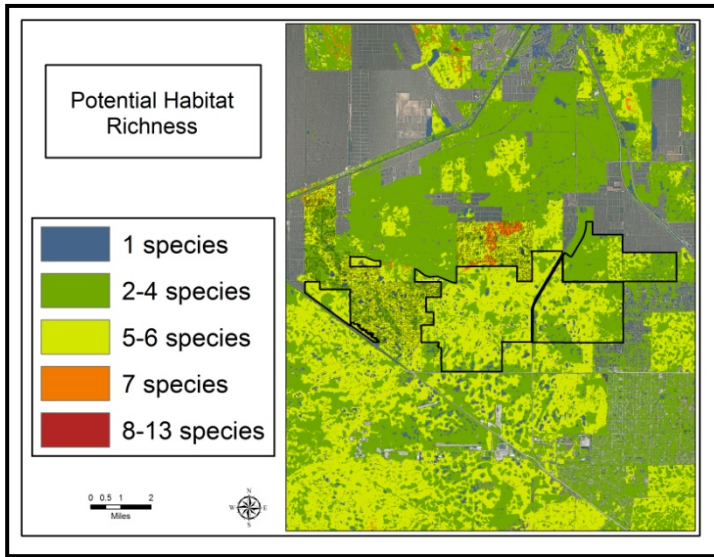


**IMPORTANT DISCLAIMER:** All maps in this document are a conceptual or planning tool only. The South Florida Water Management District does not guarantee or make any representation regarding the information contained herein. It is not self-executing or binding, and does not affect the interests of any persons or properties, including any present or future right or use of real property.

For more information on the data layers used in the assessment, please refer to the Land Assessment Study Process and Methodology document available here: [http://www.sfwmd.gov/portal/page/portal/xrepository/sfwmd\\_repository\\_pdf/land\\_assessment\\_study\\_process.pdf](http://www.sfwmd.gov/portal/page/portal/xrepository/sfwmd_repository_pdf/land_assessment_study_process.pdf)



**PalMar (Both Units): Land Character  
(Continued)**



**IMPORTANT DISCLAIMER:** All maps in this document are a conceptual or planning tool only. The South Florida Water Management District does not guarantee or make any representation regarding the information contained herein. It is not self-executing or binding, and does not affect the interests of any persons or properties, including any present or future right or use of real property.

For more information on the data layers used in the assessment, please refer to the Land Assessment Study Process and Methodology document available here: [http://www.sfwmd.gov/portal/page/portal/xrepository/sfwmd\\_repository\\_pdf/land\\_assessment\\_study\\_process.pdf](http://www.sfwmd.gov/portal/page/portal/xrepository/sfwmd_repository_pdf/land_assessment_study_process.pdf)