

Loxahatchee Slough

Palm Beach County

- Area within planning boundary footprint ~13,098 acres
- District fee-simple ownership ~ 257 acres
- Other public fee-simple ownership ~ 12,324 acres
- Area under other protective restriction (conservation easement, platted preserve area, etc.) ~ 334 acres

Site Overview

The District’s parcel is located at the southern end of the county-owned Loxahatchee Slough.

Core Mission Values

This parcel was acquired to fill the gap between the County’s Loxahatchee Slough property to the north, and the Grassy Waters Preserve to the south so that there would not be a hydrologic break between the properties. The project will enhance water supply, water quality, and natural systems restoration.

Other Resource Value

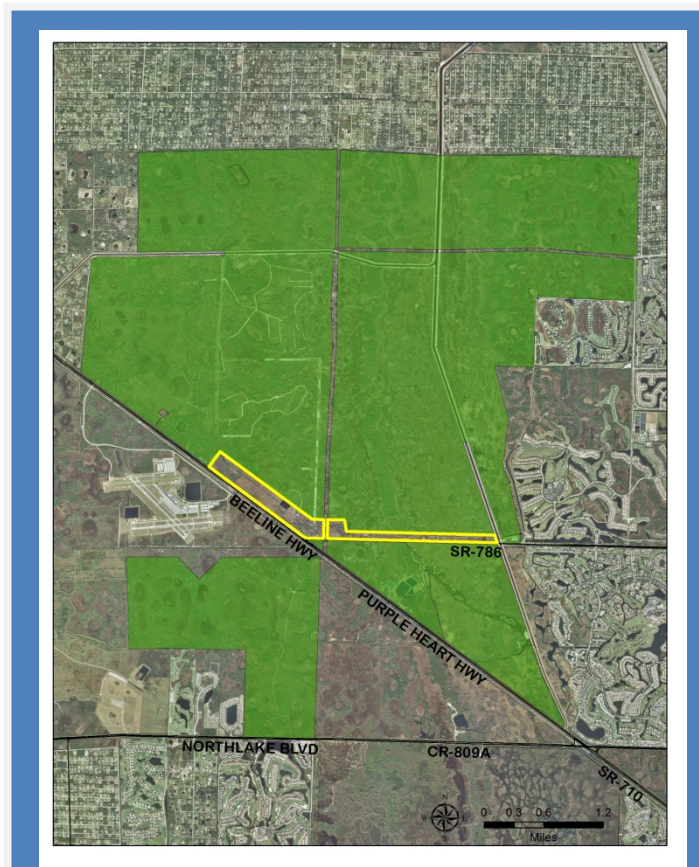
The site connects the Grassy Waters Preserve to the south with the Loxahatchee Slough to the north, creating a significant landscape-scale wetland area in public ownership.

Management Issues

The area is intended to be used as a conveyance feature that takes water from the C-18 canal and provides water deliveries to the Grassy Waters Preserve.

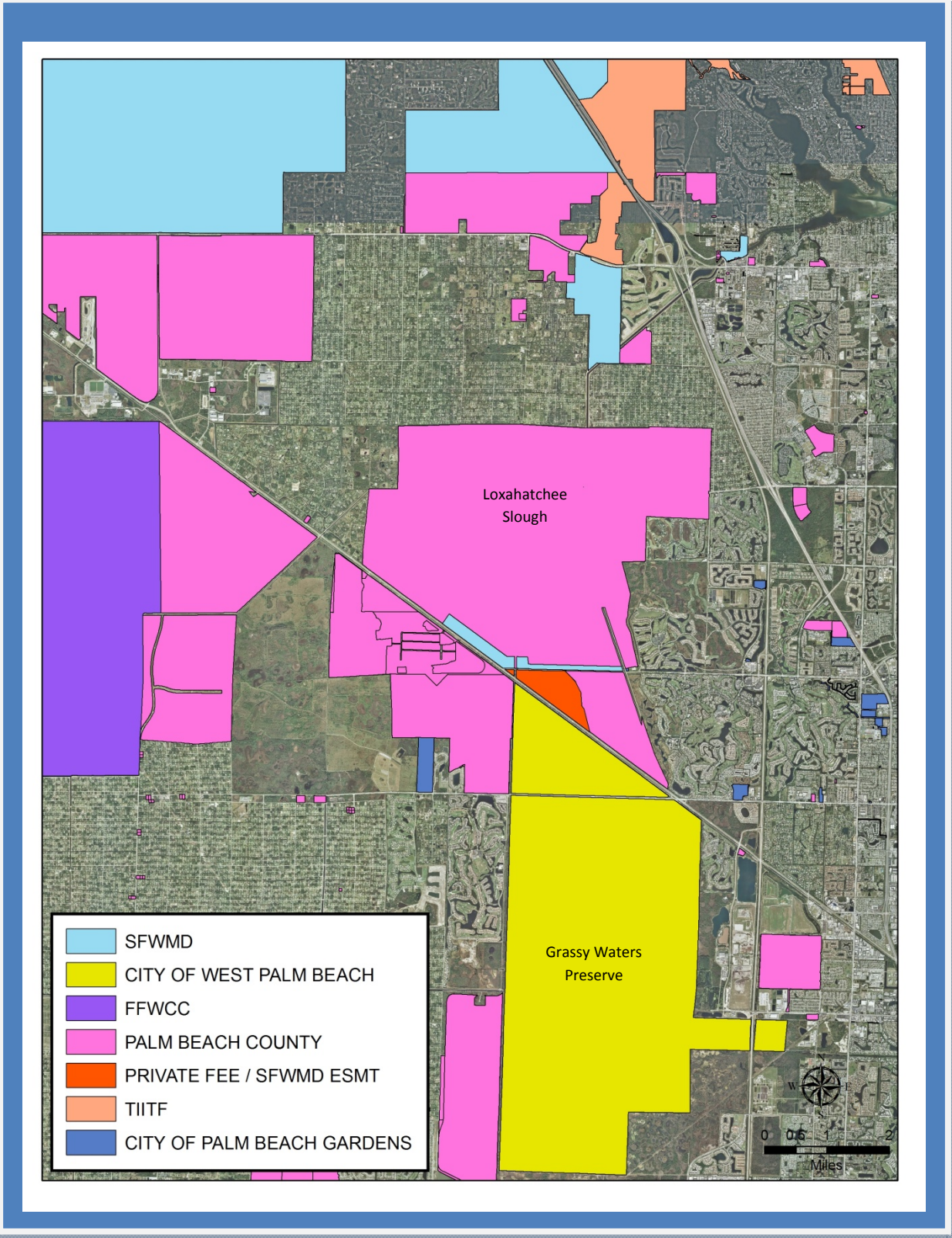
Public Use and Recreation Value

There are no public use facilities on this site.



The Loxahatchee Slough, District fee-ownership is outlined in yellow, easement interest is in green. Property was purchased in 2008 with funds from Save Our Everglades Trust Fund.

Loxahatchee Slough area Public Land



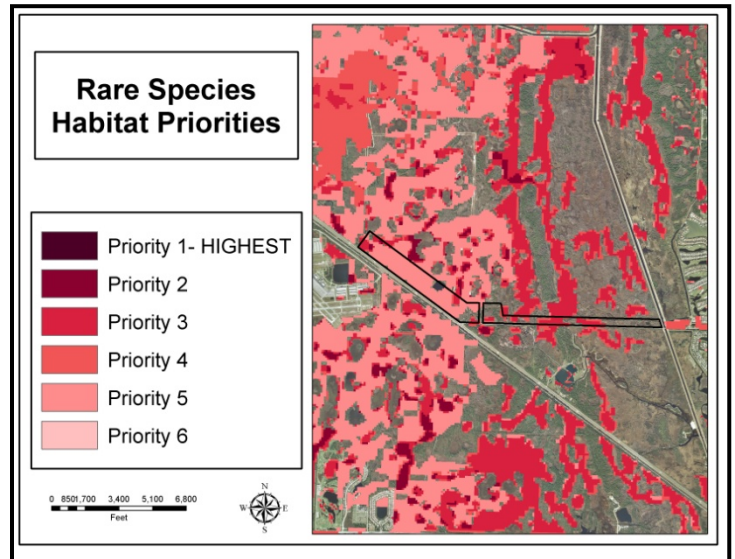
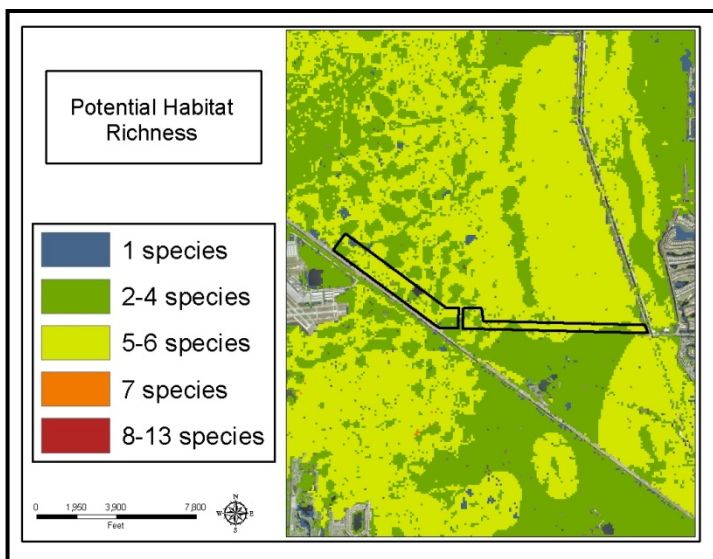
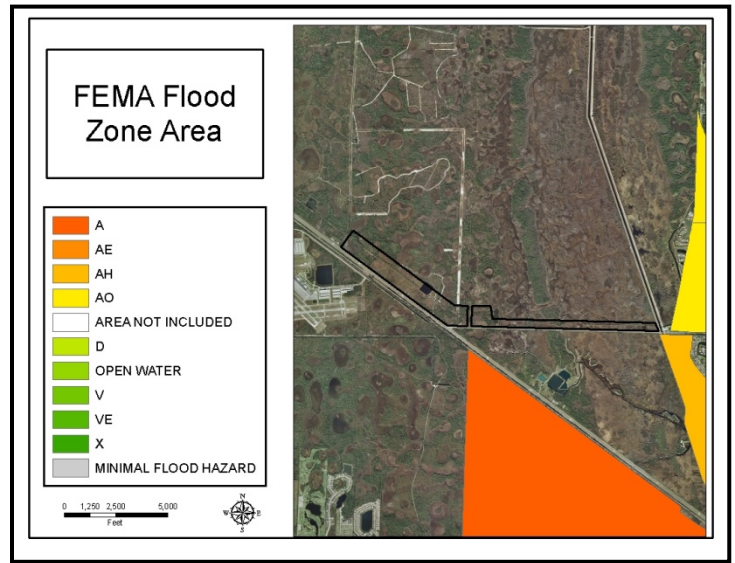
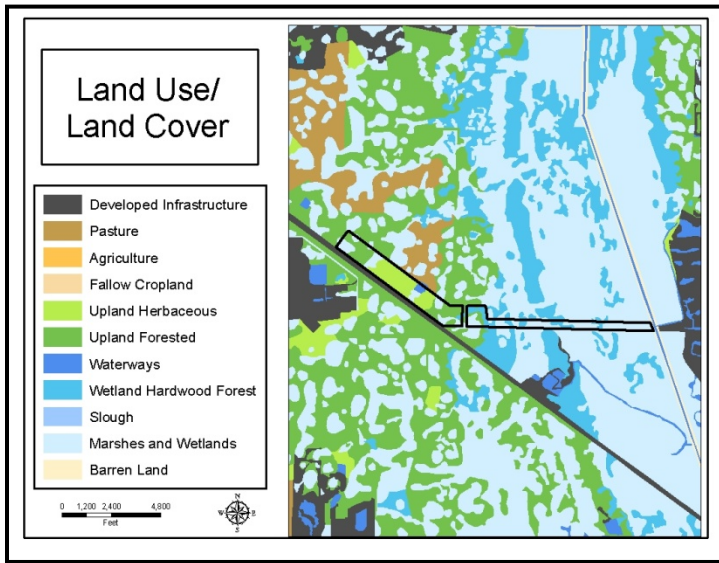
Loxahatchee Slough, Photos



The flatwoods, prairie/pasture, and borrow pit pond on the District's Loxahatchee Slough Property.



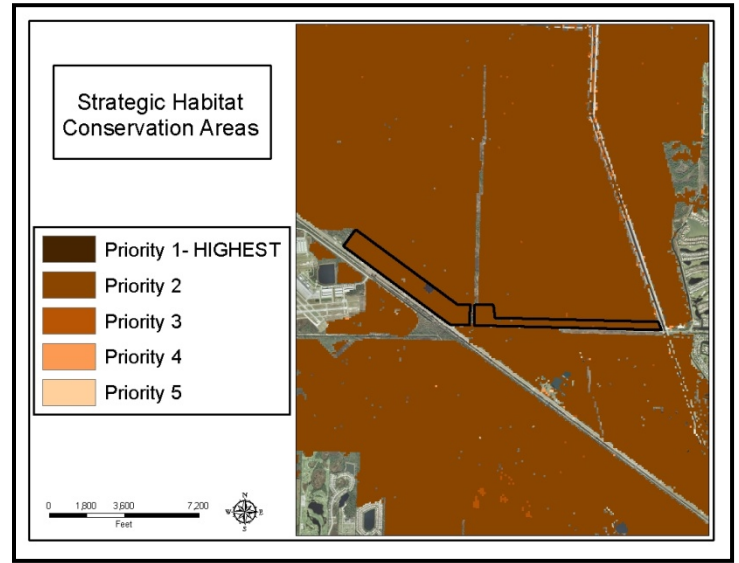
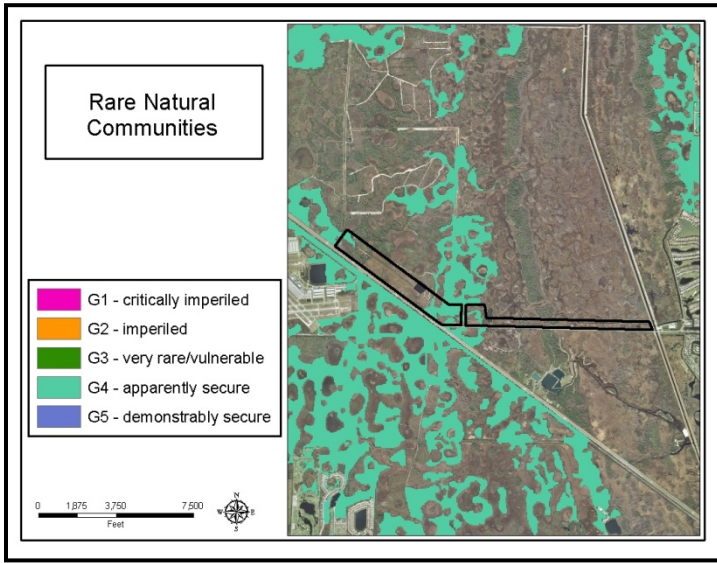
Loxahatchee Slough: Land Character



IMPORTANT DISCLAIMER: All maps in this document are a conceptual or planning tool only. The South Florida Water Management District does not guarantee or make any representation regarding the information contained herein. It is not self-executing or binding, and does not affect the interests of any persons or properties, including any present or future right or use of real property.

For more information on the data layers used in the assessment, please refer to the Land Assessment Study Process and Methodology document available here: http://www.sfwmd.gov/portal/page/portal/xrepository/sfwmd_repository_pdf/land_assessment_study_process.pdf

**Loxahatchee Slough: Land Character
(Continued)**



IMPORTANT DISCLAIMER: All maps in this document are a conceptual or planning tool only. The South Florida Water Management District does not guarantee or make any representation regarding the information contained herein. It is not self-executing or binding, and does not affect the interests of any persons or properties, including any present or future right or use of real property.

For more information on the data layers used in the assessment, please refer to the Land Assessment Study Process and Methodology document available here:
http://www.sfwmd.gov/portal/page/portal/xrepository/sfwmd_repository_pdf/land_assessment_study_process.pdf