

L-8 Reservoir

Palm Beach County

- District fee-simple ownership ~ 1,215 acres
- Other public fee-simple ownership ~ 0 acres
- Area under other protective restriction (conservation easement, platted preserve area, etc.) ~ 47.54 acres

Site Overview

The L-8 reservoir is a rock mine that has been converted to a below-ground reservoir.

Core Mission Values

The reservoir will be able to capture excess water in the wet season to improve year-round flows to the Grassy Waters Preserve, the Loxahatchee Slough, and the Loxahatchee River. This reservoir adds capacity to help manage regional water supply through seasonal fluctuations and improve the hydroperiods of regionally significant wetland systems.

Other Resource Value

The site falls within a wildlife corridor that is being established to connect the J.W. Corbett Wildlife Management Area to the north with the stormwater treatment areas and National Wildlife Refuge to the south.

Management Issues

The area is used as an in-ground storage reservoir.

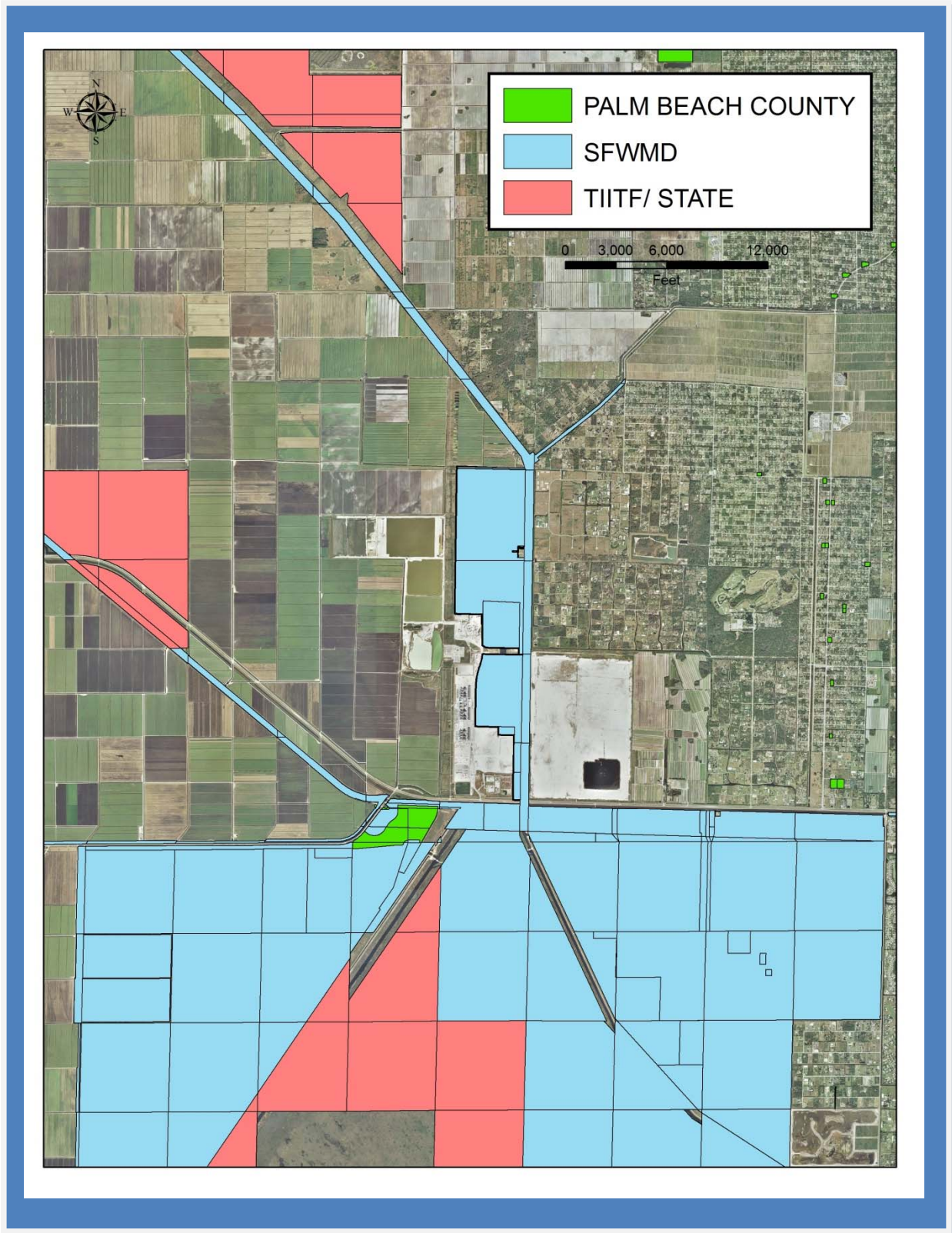
Public Use and Recreation Value

The District is evaluating the site for potential public use opportunities.



The L-8 Reservoir, District fee-ownership is outlined in yellow.

L-8 Reservoir area Public Land

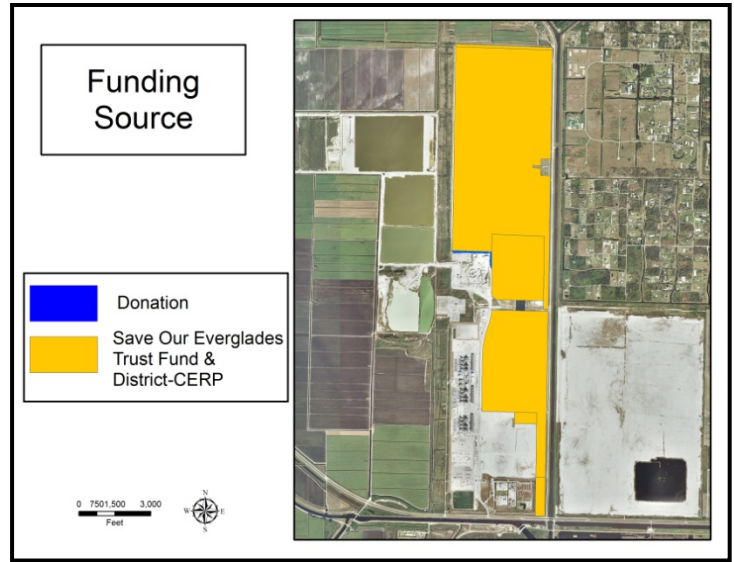
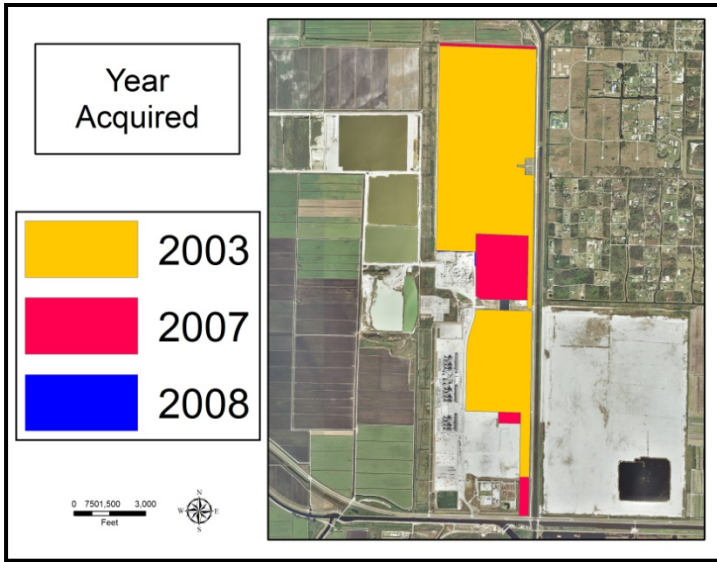


L-8 Reservoir, Photos

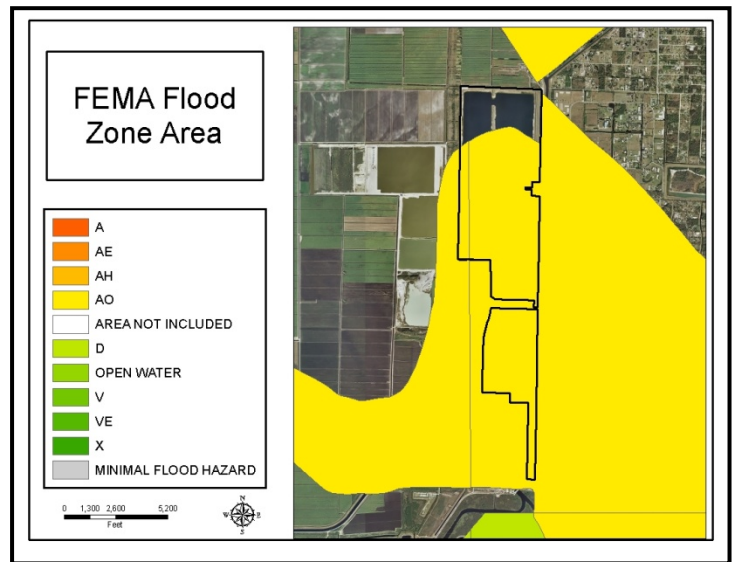
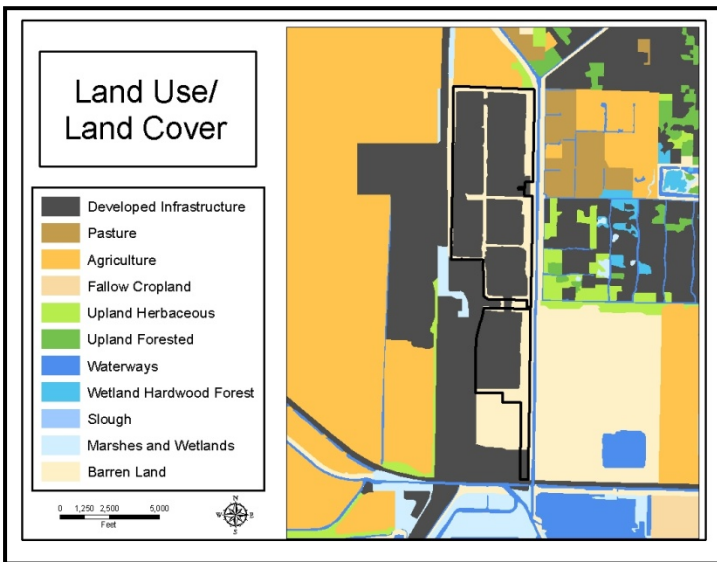


Oblique photo showing the L-8 Reservoir.

L-8 Reservoir: Land Acquisition



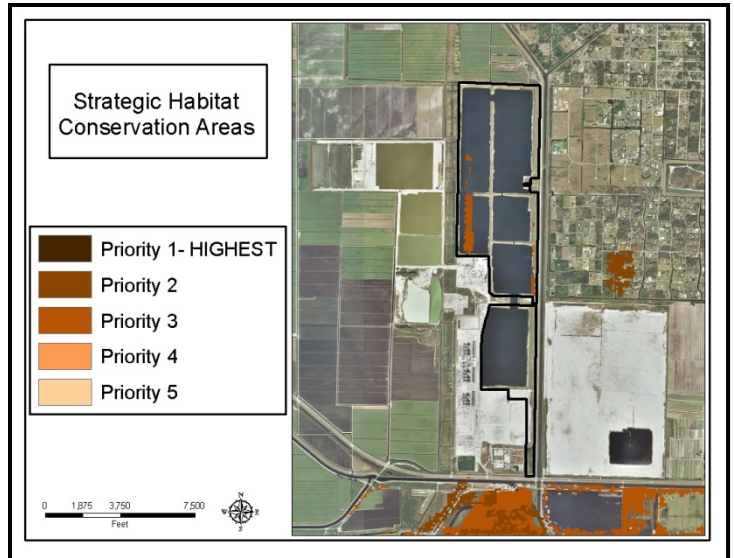
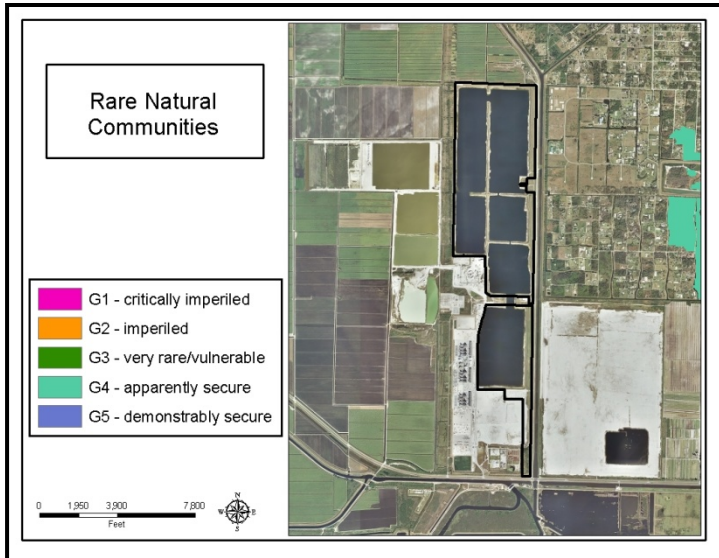
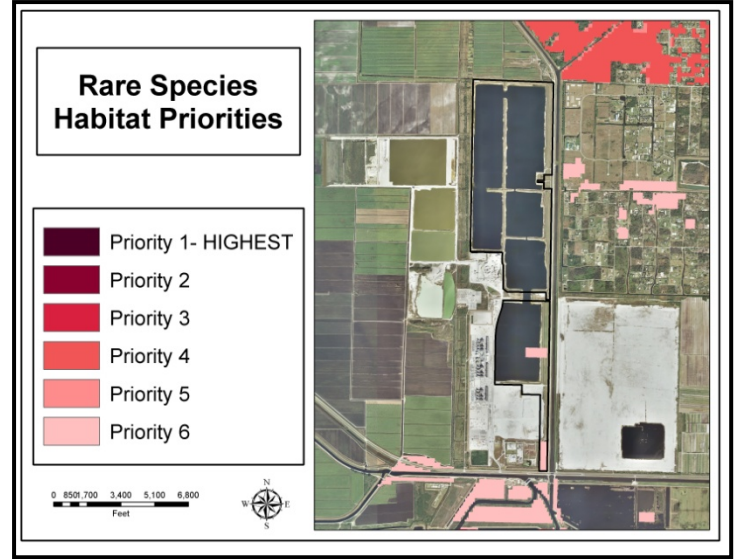
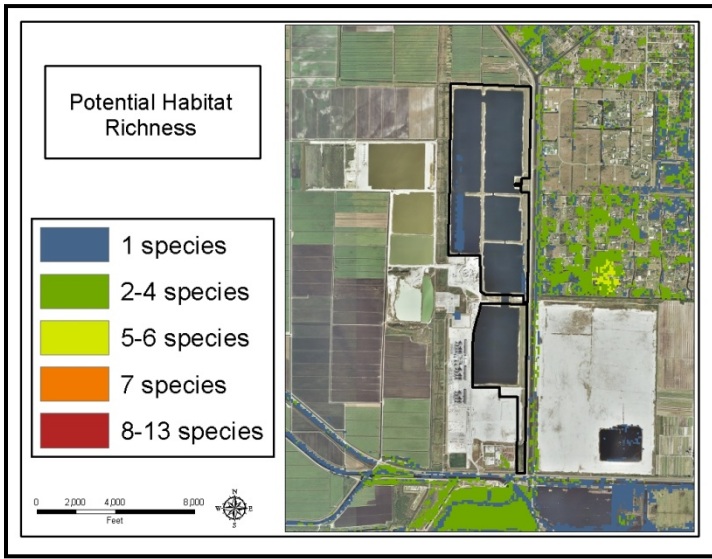
L-8 Reservoir: Land Character



IMPORTANT DISCLAIMER: All maps in this document are a conceptual or planning tool only. The South Florida Water Management District does not guarantee or make any representation regarding the information contained herein. It is not self-executing or binding, and does not affect the interests of any persons or properties, including any present or future right or use of real property.

For more information on the data layers used in the assessment, please refer to the Land Assessment Study Process and Methodology document available here: http://www.sfwmd.gov/portal/page/portal/xrepository/sfwmd_repository_pdf/land_assessment_study_process.pdf

L-8 Reservoir: Land Character (Continued)



IMPORTANT DISCLAIMER: All maps in this document are a conceptual or planning tool only. The South Florida Water Management District does not guarantee or make any representation regarding the information contained herein. It is not self-executing or binding, and does not affect the interests of any persons or properties, including any present or future right or use of real property.

For more information on the data layers used in the assessment, please refer to the Land Assessment Study Process and Methodology document available here: http://www.sfwmd.gov/portal/page/portal/xrepository/sfwmd_repository_pdf/land_assessment_study_process.pdf