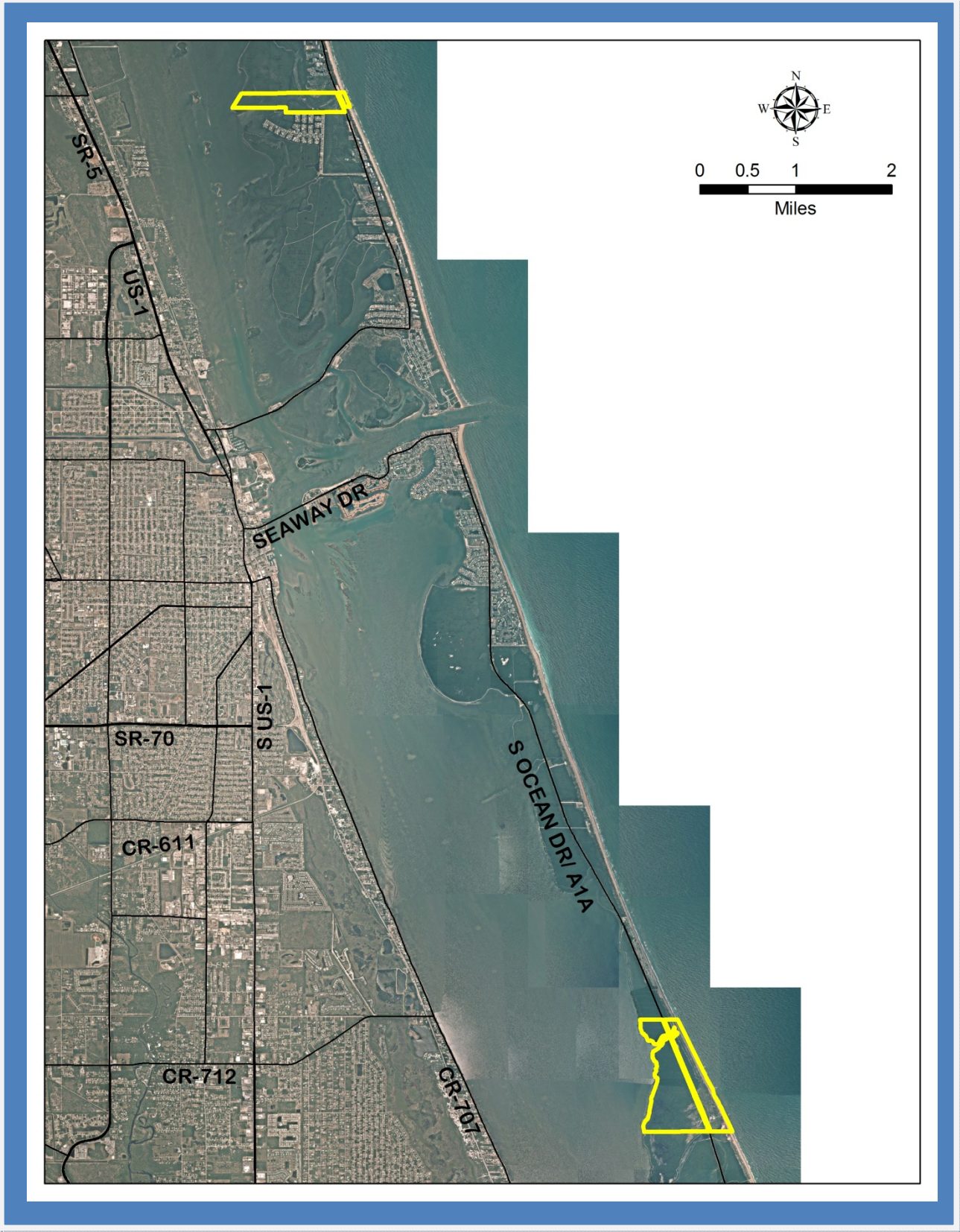


Indian River Lagoon (Save Our Rivers)
Assessment Units



Indian River Lagoon (Save Our Rivers)

St. Lucie County

- Area within planning boundary footprint ~ 673.31 acres
- District fee-simple ownership ~ 540.79 acres
- Other public fee-simple ownership ~ 71.16 acres

Site Overview

The District’s Indian River Lagoon Save Our Rivers acquisitions were occurred on two tracts: Queens Island located three miles north of the Fort Pierce inlet, and Blind Creek lying six miles to the south of the inlet and just north of the FPL power plant. Acquisition was accomplished through a multi-entity effort utilizing funds from the Conservation and Recreation Lands (CARL) program, the National Coastal Wetlands Restoration Act (NCWRA), the Save Our Rivers (SOR) program, and the Environmentally Sensitive Lands (ESL) program.

Core Mission Value

These properties directly benefit the ecological health of the Indian River Lagoon. The properties were qualified for Save Our Rivers funding because 87% of the sites contained mangrove mosquito control impoundments. The acquisition of these tracts allowed the impoundments to be enhanced with water control structures which provided better circulation of water from the Indian River Lagoon, enhancing their value as a nursery for aquatic wildlife.

Other Resource Value

In addition to the mangrove swamp, the site contains areas of saltwater marsh, coastal hammock, and beach/dune vegetation. The site is home to rare or endemic plant and animals. The site also contains cultural resource sites.

Management Issues

The area is managed by St. Lucie County. The District shares title with the State on most parcels, but owns the southerly portion of Queens Island outright.

Public Use and Recreation Value

Blind Creek recreational opportunities include fishing, swimming, sunbathing, beachcombing, wildlife observation/birding, hiking/walking, and environmental education. Recreational facilities include fishing docks and a 240-foot pier with platform, observation tower, walkways, shell parking lots and a boat launch. Queen’s Island contains trails, a canoe/kayak launch, an overlook area, and Atlantic beachfront.

Assessment Units: Blind Creek and Queen’s Island

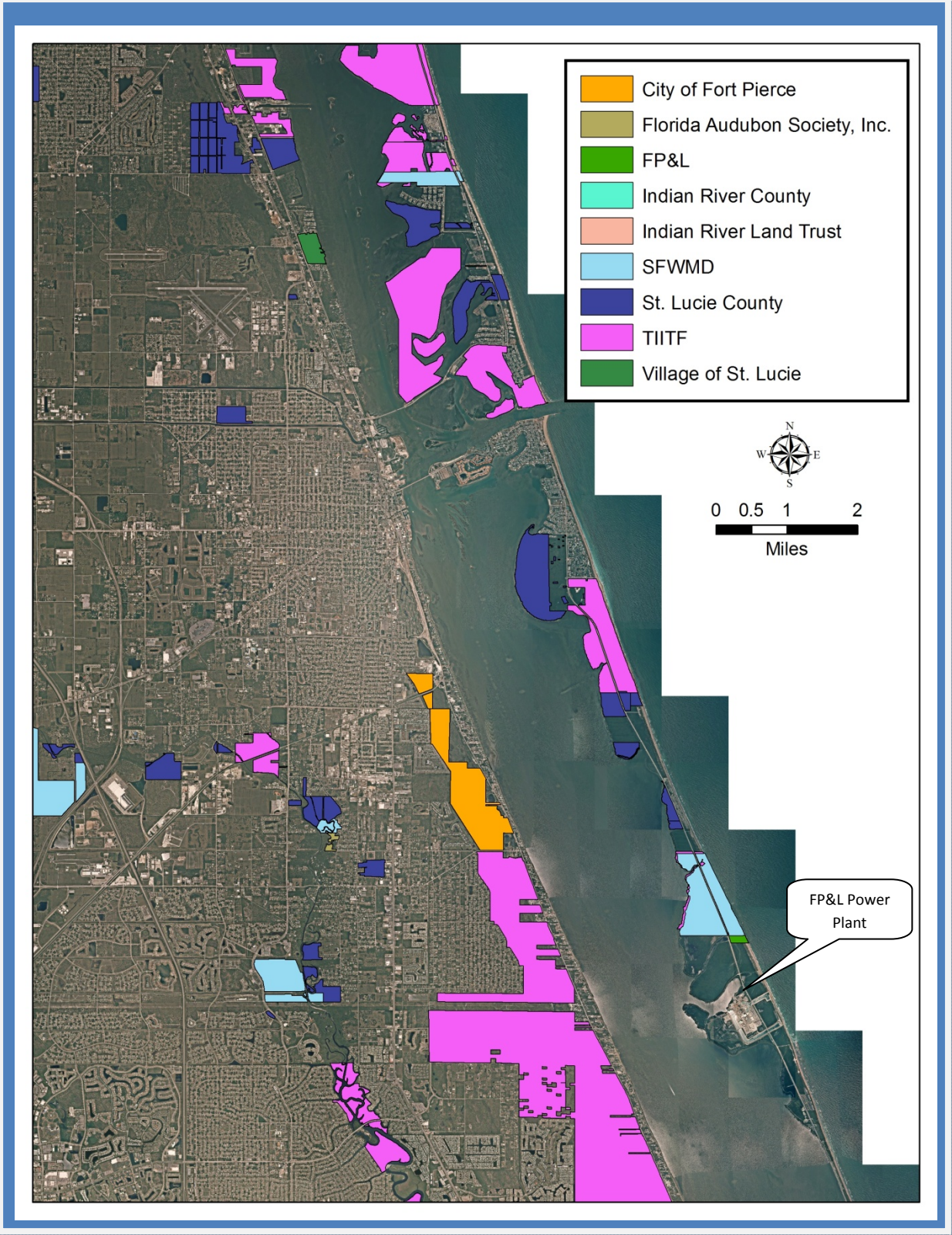


Queens Island, the State owns the property immediately to the north



Blind Creek

Indian River Lagoon Area Public Land



Indian River Lagoon (Blind Creek), Photos



The Beach/Dune habitats at Blind Creek

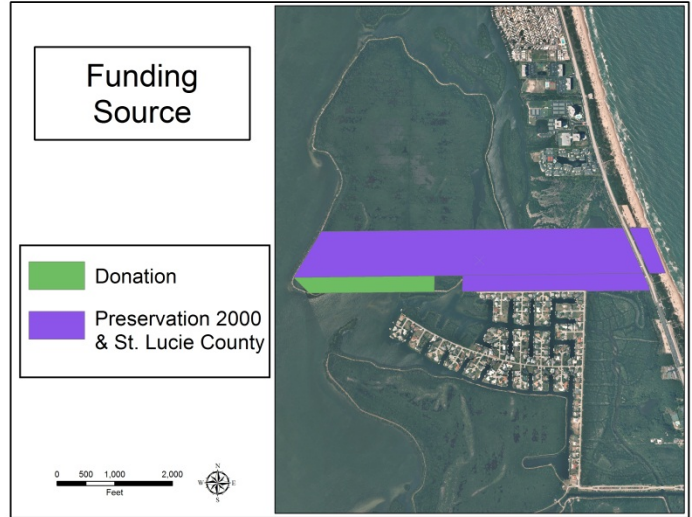
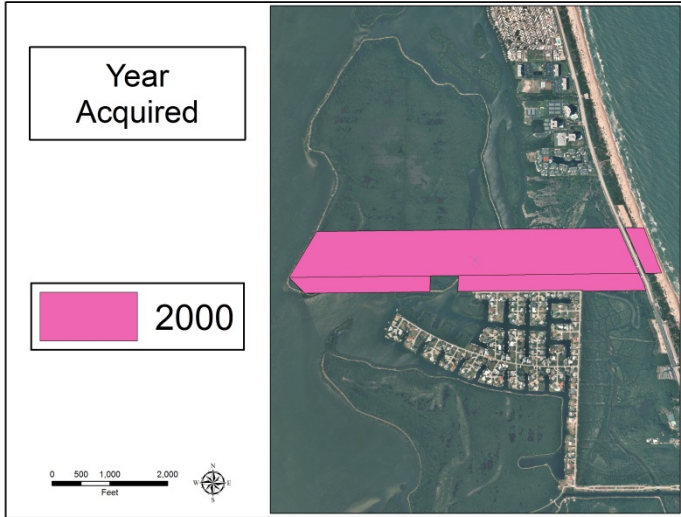


Indian River Lagoon (Queen’s Island), Photos

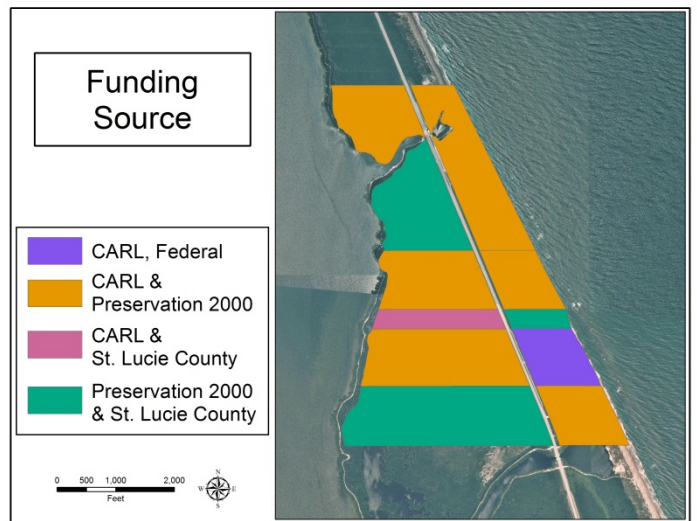
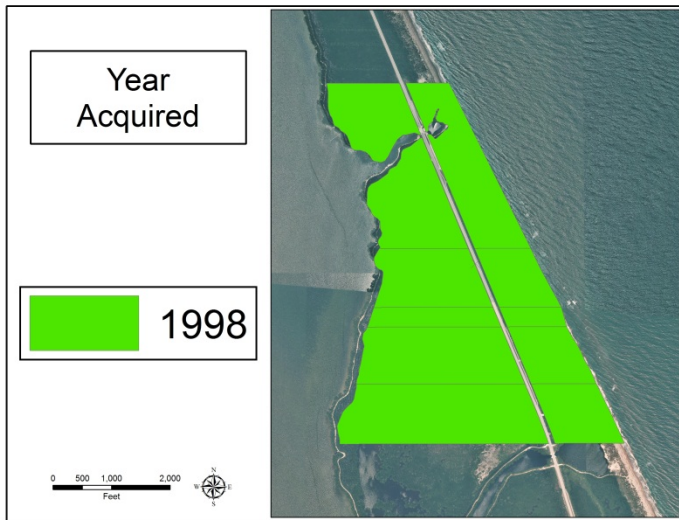


Clockwise from Upper Left: Mangroves at Queens Island, maritime hammock, beach/dune, and a transitional salt flat community.

Indian River Lagoon (Queen’s Island): Land Acquisition



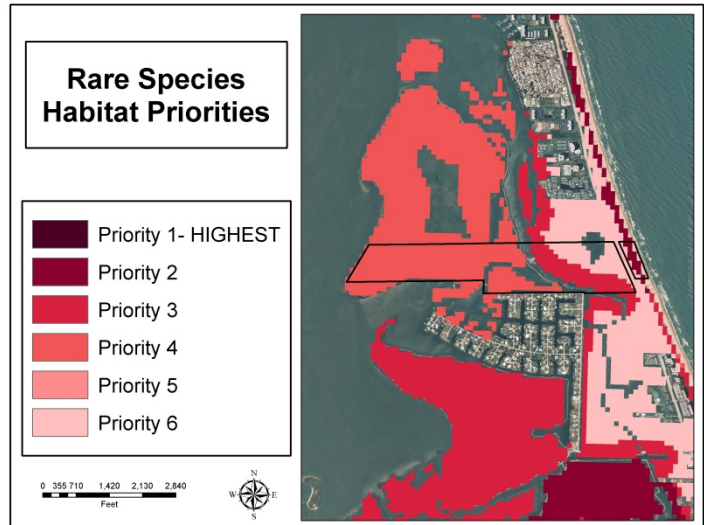
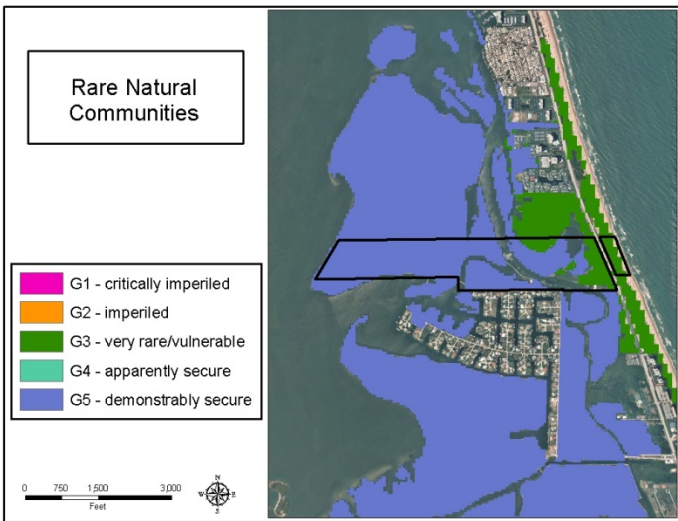
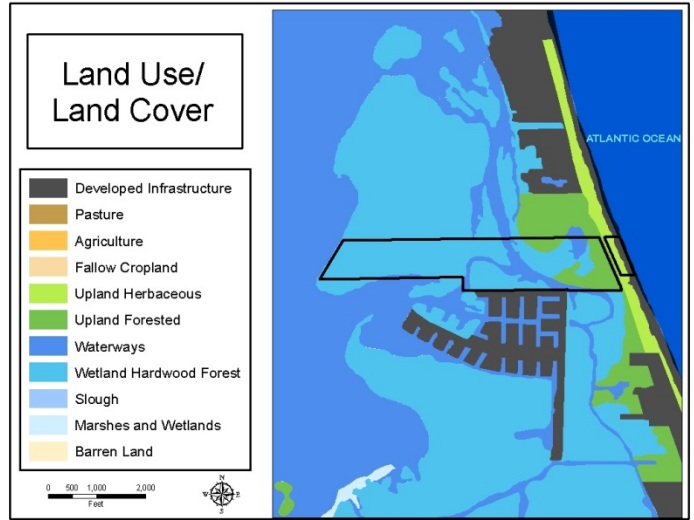
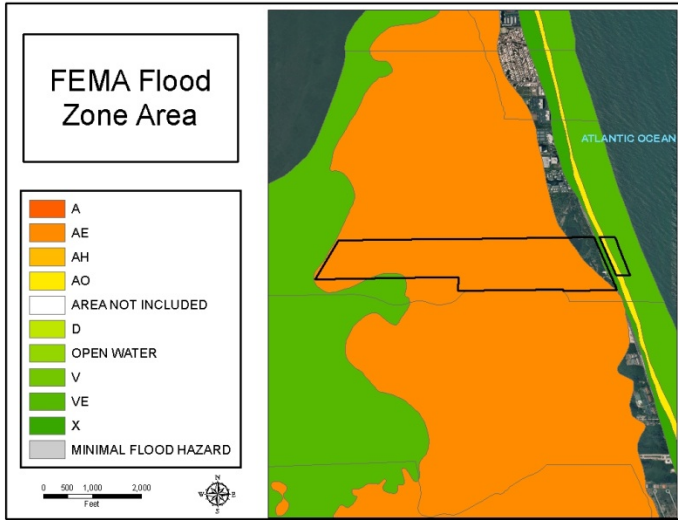
Indian River Lagoon (Blind Creek): Land Acquisition



IMPORTANT DISCLAIMER: All maps in this document are a conceptual or planning tool only. The South Florida Water Management District does not guarantee or make any representation regarding the information contained herein. It is not self-executing or binding, and does not affect the interests of any persons or properties, including any present or future right or use of real property.

For more information on the data layers used in the assessment, please refer to the Land Assessment Study Process and Methodology document available here: http://www.sfwmd.gov/portal/page/portal/xrepository/sfwmd_repository_pdf/land_assessment_study_process.pdf

Indian River Lagoon (Queen’s Island): Land Character

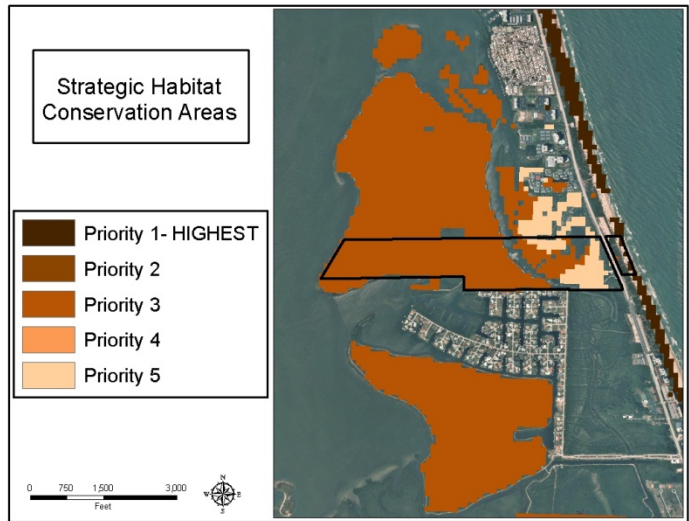
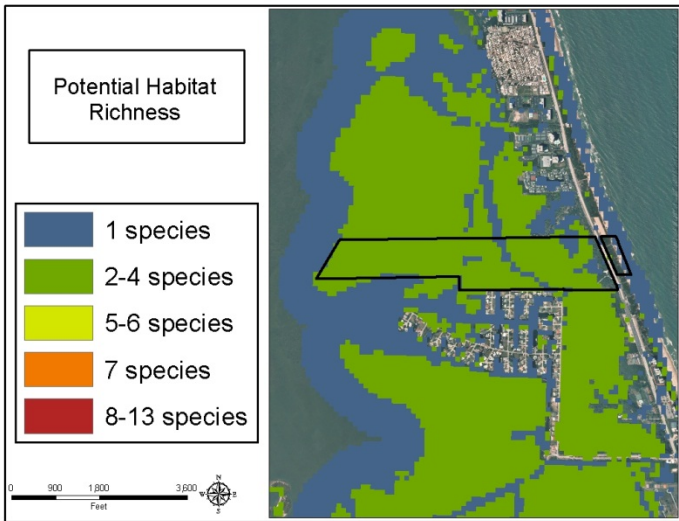


IMPORTANT DISCLAIMER: All maps in this document are a conceptual or planning tool only. The South Florida Water Management District does not guarantee or make any representation regarding the information contained herein. It is not self-executing or binding, and does not affect the interests of any persons or properties, including any present or future right or use of real property.

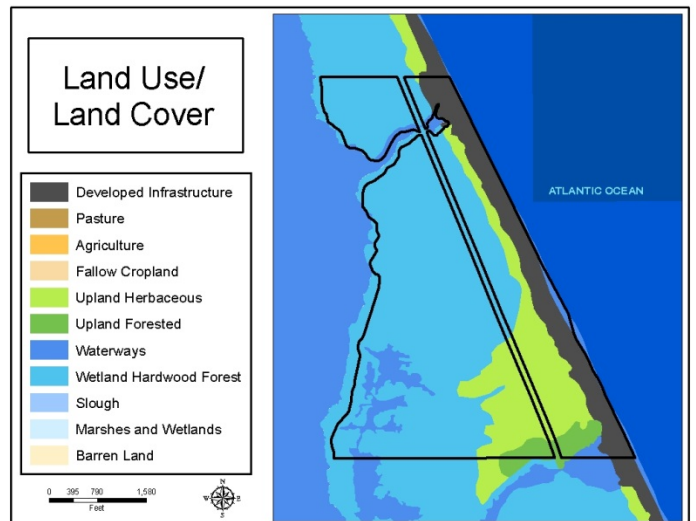
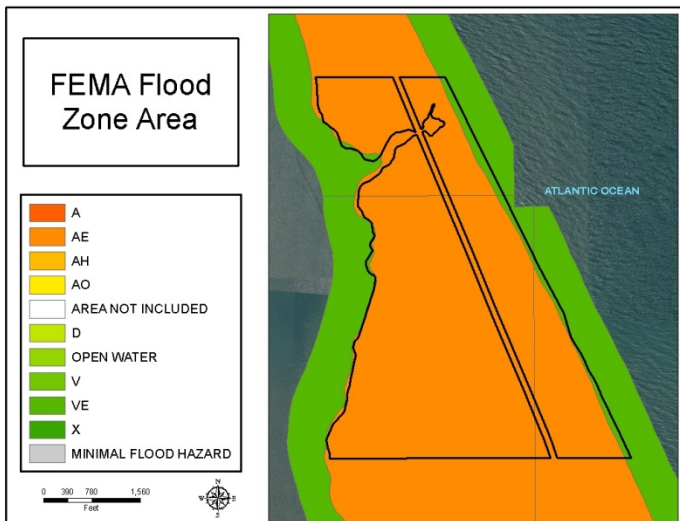
For more information on the data layers used in the assessment, please refer to the Land Assessment Study Process and Methodology document available here:

http://www.sfwmd.gov/portal/page/portal/xrepository/sfwmd_repository_pdf/land_assessment_study_process.pdf

Indian River Lagoon (Queen’s Island): Land Character (Continued)



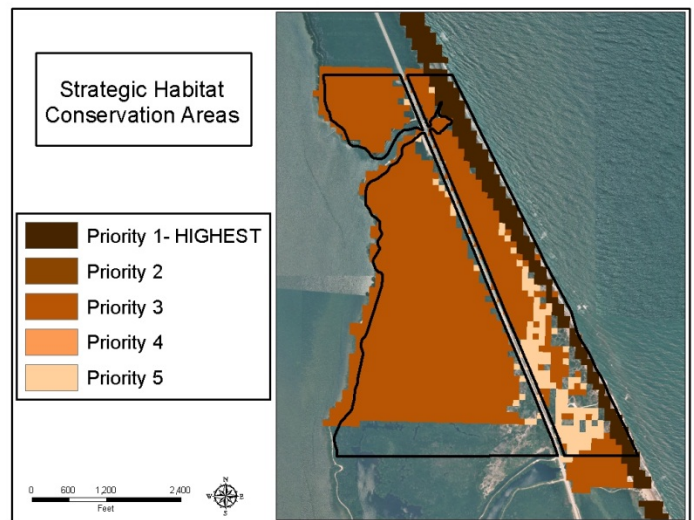
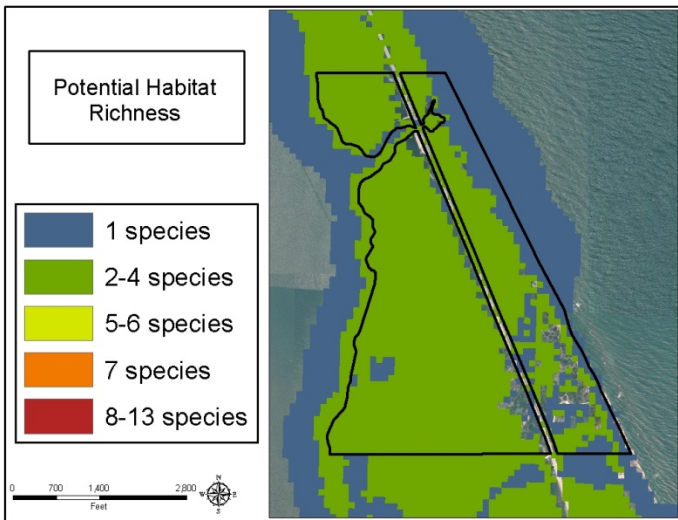
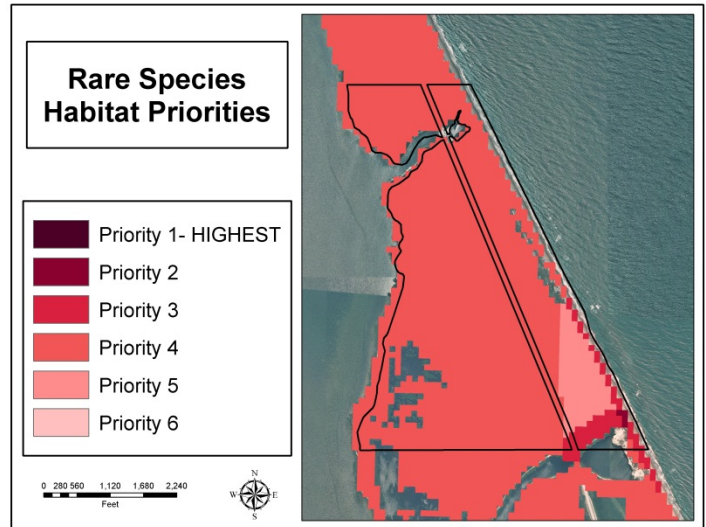
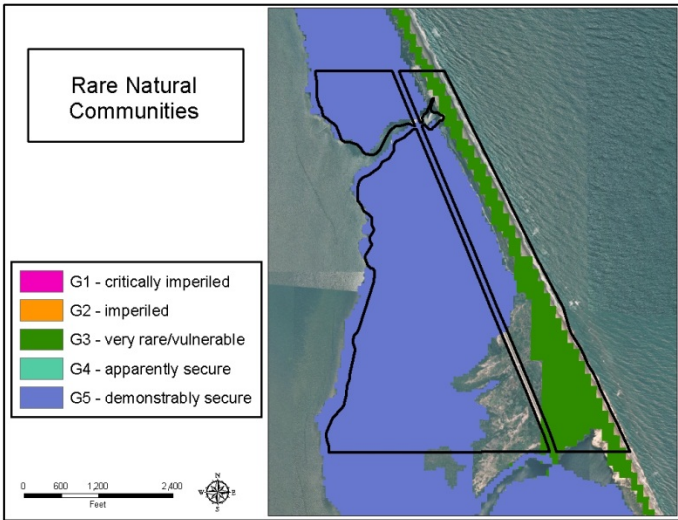
Indian River Lagoon (Blind Creek): Land Character



IMPORTANT DISCLAIMER: All maps in this document are a conceptual or planning tool only. The South Florida Water Management District does not guarantee or make any representation regarding the information contained herein. It is not self-executing or binding, and does not affect the interests of any persons or properties, including any present or future right or use of real property.

For more information on the data layers used in the assessment, please refer to the Land Assessment Study Process and Methodology document available here: http://www.sfwmd.gov/portal/page/portal/xrepository/sfwmd_repository_pdf/land_assessment_study_process.pdf

Indian River Lagoon (Blind Creek): Land Character (Continued)



IMPORTANT DISCLAIMER: All maps in this document are a conceptual or planning tool only. The South Florida Water Management District does not guarantee or make any representation regarding the information contained herein. It is not self-executing or binding, and does not affect the interests of any persons or properties, including any present or future right or use of real property.

For more information on the data layers used in the assessment, please refer to the Land Assessment Study Process and Methodology document available here: http://www.sfwmd.gov/portal/page/portal/xrepository/sfwmd_repository_pdf/land_assessment_study_process.pdf