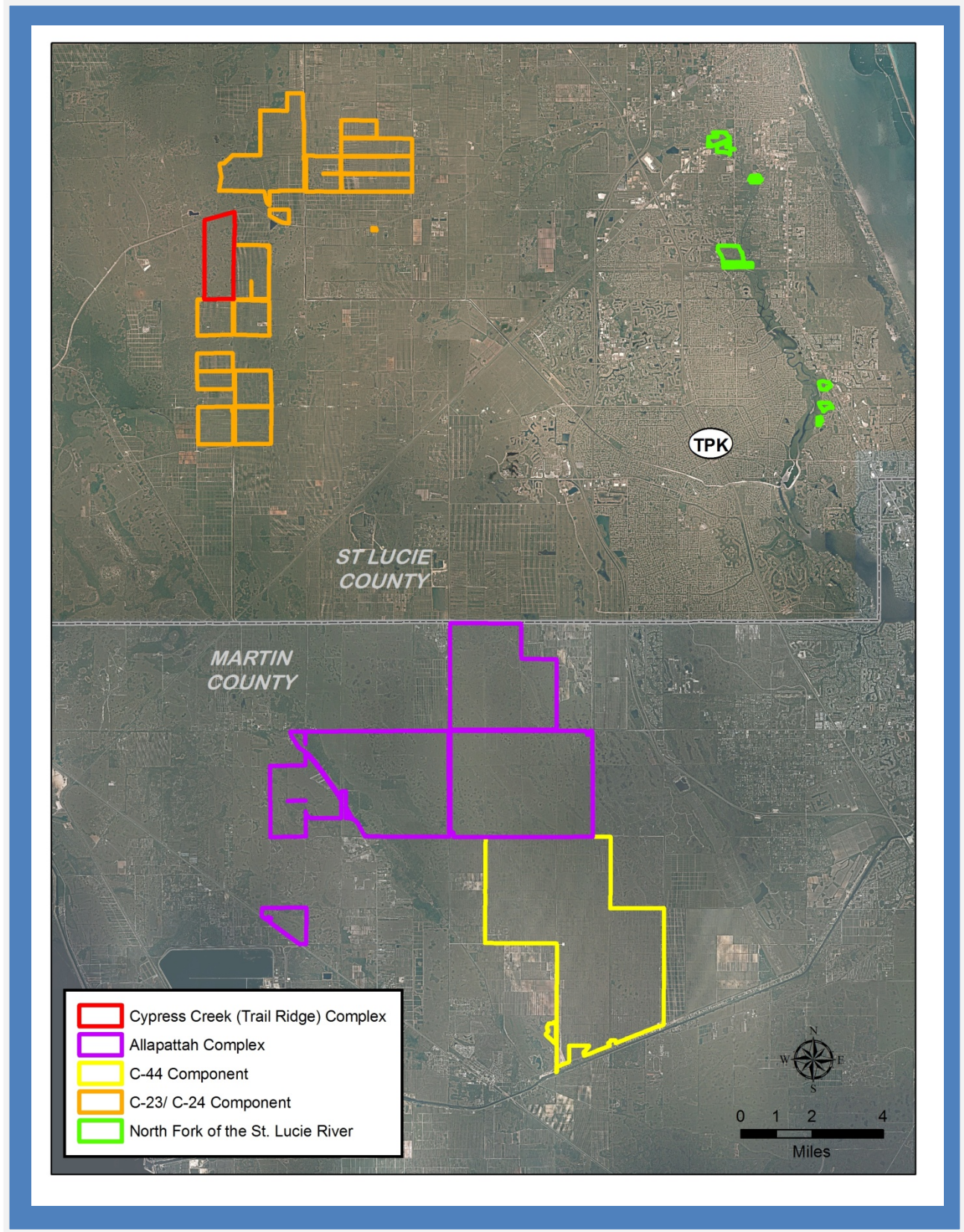
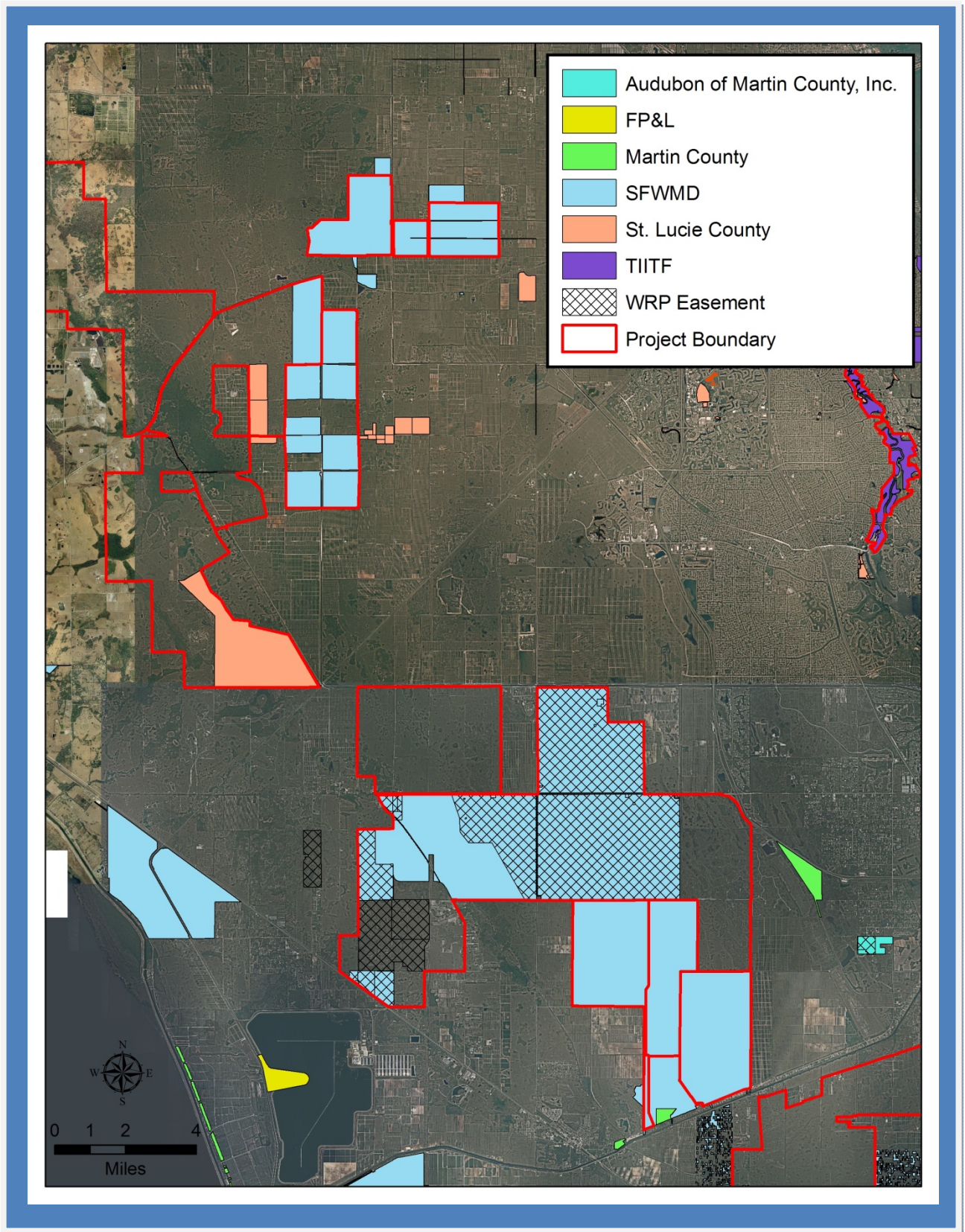


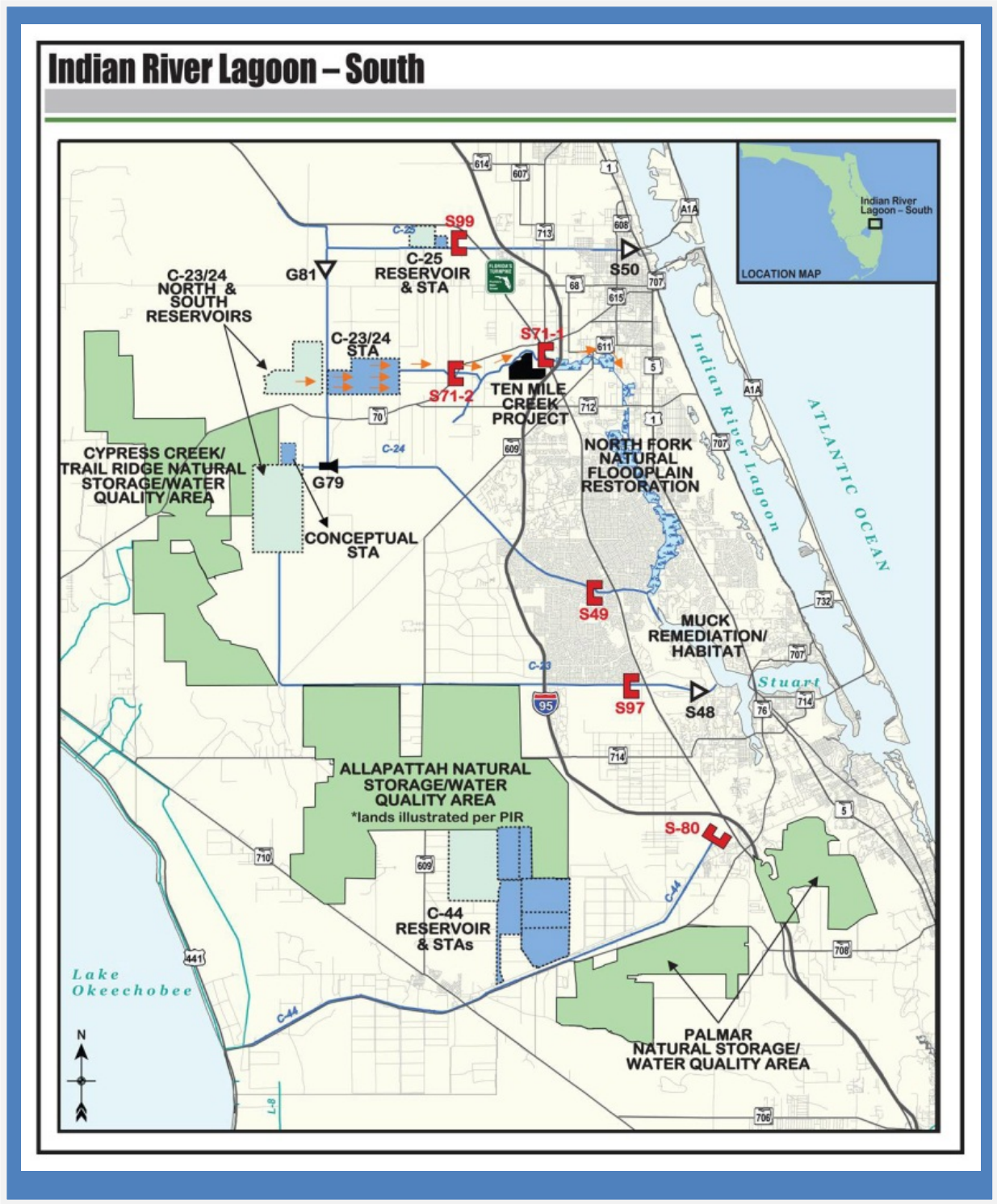
Indian River Lagoon South (CERP)
Assessment Units



Indian River Lagoon South (CERP)
Area Public Lands



Indian River Lagoon South (CERP), Project Components (these are conceptual planning areas, and do not represent District ownership)



Indian River Lagoon South (CERP)

Martin and St. Lucie Counties

- Area within planning boundary footprint ~ 110,655 acres
- District fee-simple ownership ~ 46,944 acres
- Other public fee-simple ownership ~ 3,931 acres
- Area under other protective restriction (conservation easement, platted preserve area, etc.) ~ 4943 acres

Site Overview

The Southern Indian River lagoon and associated river estuaries have suffered from altered water flow patterns and degraded water quality, including floodwater releases from Lake Okeechobee and stormwater runoff from high-intensity land uses in the basin.

The Indian River Lagoon-South Restoration Project is designed to (1) restore large landscape-scale natural wetland systems in St. Lucie and Martin counties to reduce nutrient loads and retain basin water in the natural landscape; (2) create large impoundments and reservoirs to reduce the fresh water sent to tide and make it available for other uses; (3) create thousands of acres of stormwater treatment wetlands to significantly reduce the nutrient loads to the estuary; and (4) revitalize riverine and estuary habitats.

Assessment Units

Note: lands acquired in one of the components of the CERP project, the Palmar Natural Storage WQA, is included as an assessment unit under the South Fork of the St. Lucie and Atlantic Ridge due to its' co-designations as Save Our Rivers, Preservation 2000, and Florida Forever projects.

North Fork of the St. Lucie River

Core Mission Value

The North Fork Floodplain Restoration includes acquisition of floodplain land along the North Fork of the St. Lucie River. Water quality benefits are achieved through the reduction of direct urban runoff into the river, and through the restoration of old river oxbows.

Other Resource Value

These floodplain habitats are important to the recruitment and early life history stages of a number of essential commercial and recreational fish species.

Management Issues

The District parcels are separated from each other, but connected by sovereign lands of the state. The District parcels on the west side of the river are managed by St. Lucie County, and all but one of the parcels on the east side of the river are managed by the Florida Park Service through the nearby Savannas State Park.

Public Use and Recreation Value

All of the parcels may be accessed by the River. Additionally, the County's popular Oxbow Eco-Center is located on the parcels on the west side of the River. The northern parcels, managed by the State Park, contain a network of hiking trails, and the Park Service is in the process of making improvements to a canoe/kayak launch on the east side of the River.

C-23/C-24 Component

Core Mission Value

This area is planned to have a northern and southern reservoir, and a Stormwater Treatment Area. The reservoirs are intended to reduce the extreme peaks of freshwater discharge to the estuary, and make a preferred source of water available to agriculture, to reduce reliance on well water from the Floridan Aquifer. The reservoir water would be lower in alkalinity and chloride concentration than that from the Floridan Aquifer. The Stormwater Treatment Area will reduce sediment, phosphorus and nitrogen that would otherwise be released to the estuary thereby improving estuarine water quality

Other Resource Value

Stormwater Treatment Areas constructed elsewhere in the District have been known to provide suitable habitat for a wide range of wildlife.

Management Issues

The project configuration has not yet been finalized by project planners and the construction is not anticipated to begin within the next several years. In the interim period the District has sought to lease the property for appropriate uses. This has included agricultural production, but has also included recreational use through partnerships with St. Lucie County and the Florida Fish and Wildlife Conservation Commission (FWC).

Public Use and Recreation Value

A portion of the area has been established by St. Lucie County as model airplane park as an interim use of the property. In addition, the FWC has established a portion of the site as a small game hunting area.

Cypress Creek (Trail Ridge) Complex

Core Mission Value

The restoration of this area would provide additional freshwater storage, contribute to water quality improvements, increase natural wetlands and upland habitat for wildlife and recharge the surficial aquifer.

Other Resource Value

While the District parcel is primarily improved pasture, it also contains marsh and oak hammock habitat.

Management Issues

The conceptual boundary for this area is 32,696 acres. The District has acquired an initial 1233 acre parcel adjacent to the C-23/C-24 south reservoir. Additionally, St. Lucie County natural areas, and the privately owned Bluefield Ranch Mitigation Bank, occupy an additional 6,000 acres of the area. The District parcel is currently under a cattle lease. There is a drainage canale that cuts through the center of the parcel and provides drainage for ranch land to the west. The full hydrologic restoration of the District-owned parcel would be difficult to accomplish while this drainage canal remains in its current location.

Public Use and Recreation Value

The District parcel, and the County’s natural areas, are open for public use.

Allapattah Complex

Core Mission Value

The restoration of this area will provide additional freshwater storage, contribute to water quality improvements, increase natural wetlands and upland habitat for wildlife and recharge the surficial aquifer. Restoration is underway on the parcel north of Martin Highway, and the parcel along Beeline Highway. The portion west of Fox Brown Road is under District and Private ownership. One of the privately owned parcels has undergone hydrologic restoration through the Natural Resources Conservation Service’s Wetland Reserve Program.

Other Resource Value

Allapattah contains several cultural resource sites and historic homesites. Most of the area east of fox brown road will be restored to short hydroperiod prairie and wet flatwoods and will create one of the largest contiguous areas of these valuable plant communities in Florida. One of the parcels west of Fox Brown Road has been designated for use as a gopher tortoise recipient site for tortoises that had to be removed from lands used by District and Martin County projects.

Management Issues

The area is being restored in cooperation with the Natural Resources Conservation Service.

Public Use and Recreation Value

The area contains twelve public access points, with a couple more planned. There are trailhead for hiking, hunting, and equestrian use. Allapattah also contains a camping area in the northernmost parcel.

C-44 Component

Core Mission Value

This area is planned to have a western reservoir, and Stormwater Treatment Area cells on the east side. The reservoirs are intended to capture peak discharges from the C-44 basin to reduce freshwater flows to the St. Lucie Estuary, and make a preferred source of water available to agriculture, to reduce reliance on well water from the Floridan Aquifer. The reservoir water would be lower in alkalinity and chloride concentration than that from the Floridan Aquifer. The Stormwater Treatment Area will reduce sediment, phosphorus and nitrogen that would otherwise be released to the estuary thereby improving estuarine water quality

Other Resource Value

Stormwater Treatment Areas and Reservoirs constructed elsewhere in the District have been known to provide suitable habitat for a wide range of wildlife.

Other Resource Value

Stormwater Treatment Areas and Reservoirs constructed elsewhere in the District have been known to provide suitable habitat for a wide range of wildlife.

Management Issues

The area is currently under construction.

Public Use and Recreation Value

The area currently not open for public use as construction of the project is under way.

North Fork of the St. Lucie, Photos



Top two photos, from the only District-managed parcel in the area, sometimes referred to as the Strazula parcel, but not to be confused with the much larger Strazulla Wetlands in Palm Beach County. This is a 32-acre parcel of cabbage palm dominated floodplain forest just off of Platt’s Lane and lying between Platt’s Creek Mitigation Park and Audubon’s Errett-McDermott Sanctuary.

Bottom Three Photos, from the northernmost parcels on the River, managed as the St. Lucie River Preserve State Park.

North Fork of the St. Lucie, Photos



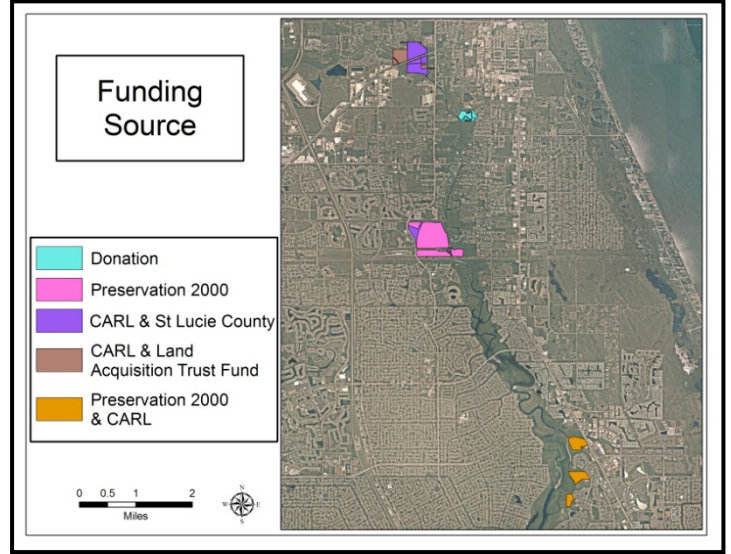
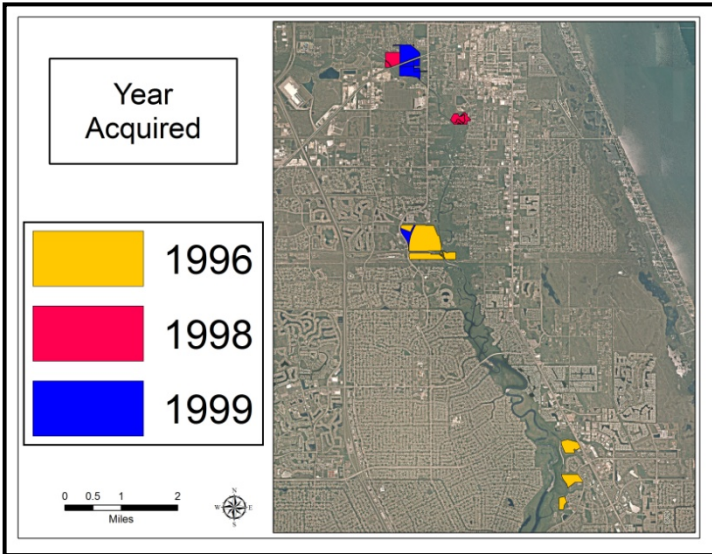
The nature center on the District-owned parcels on the west side of the river, managed by St. Lucie County as the Oxbow Eco-Center.

North Fork of the St. Lucie, Photos

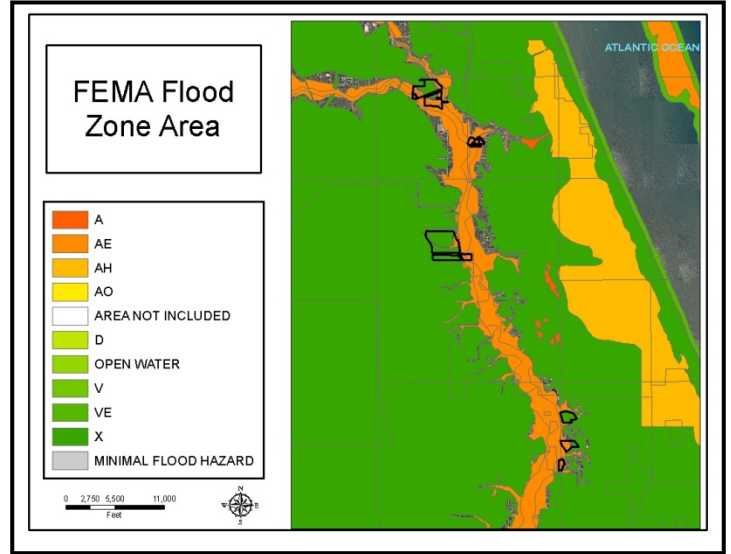
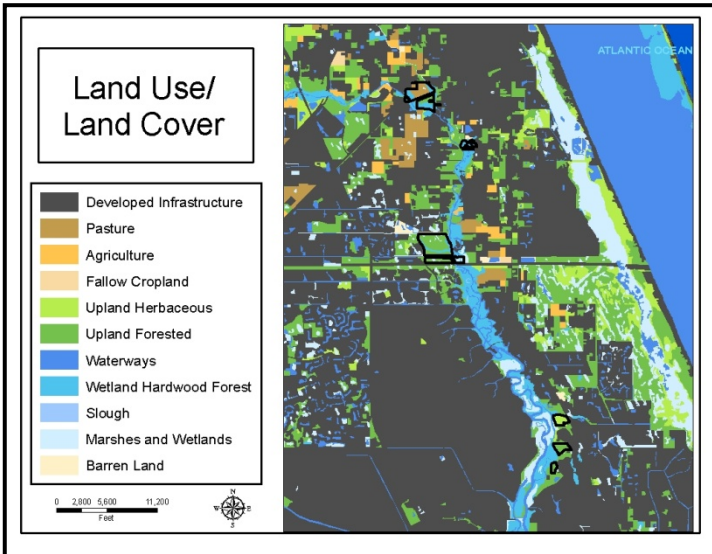


The floodplain forest and pine flatwood communities at the Oxbow Eco-Center tract.

North Fork of the St. Lucie: Land Acquisition



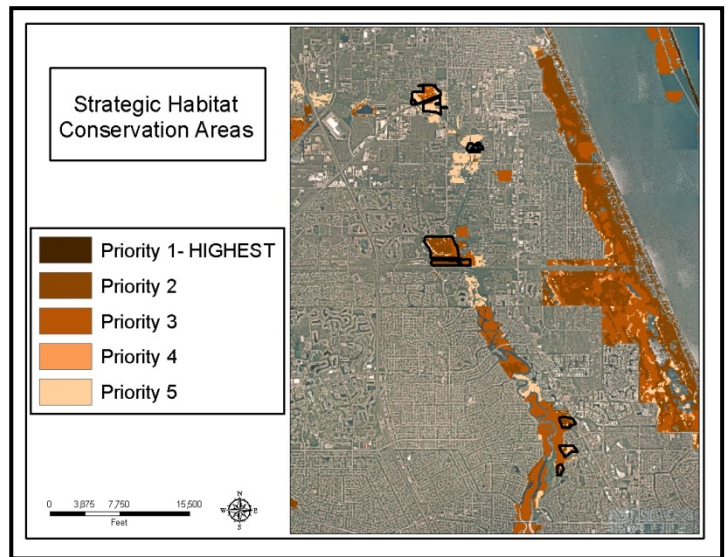
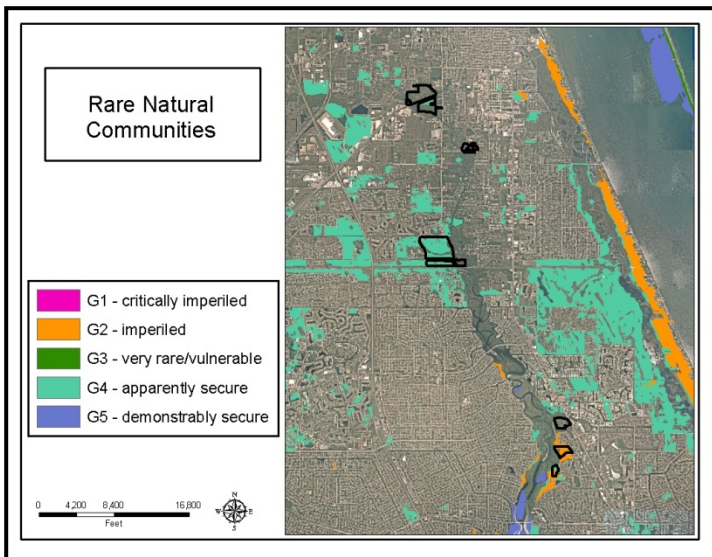
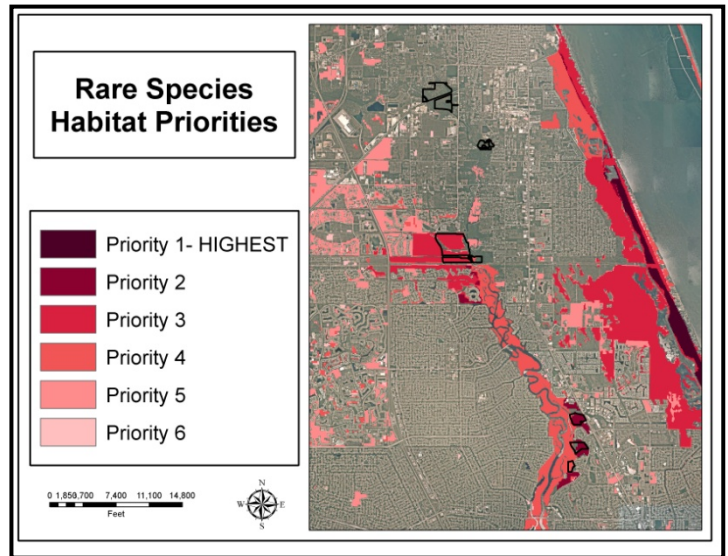
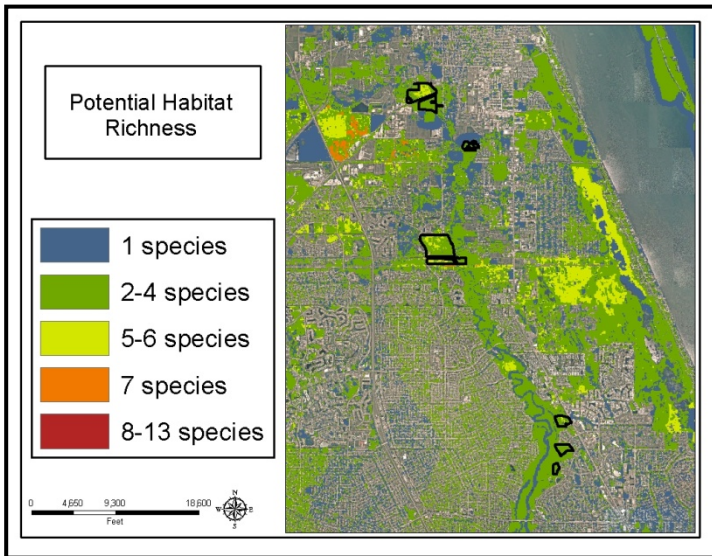
North Fork of the St. Lucie: Land Character



IMPORTANT DISCLAIMER: All maps in this document are a conceptual or planning tool only. The South Florida Water Management District does not guarantee or make any representation regarding the information contained herein. It is not self-executing or binding, and does not affect the interests of any persons or properties, including any present or future right or use of real property.

For more information on the data layers used in the assessment, please refer to the Land Assessment Study Process and Methodology document available here: http://www.sfwmd.gov/portal/page/portal/xrepository/sfwmd_repository_pdf/land_assessment_study_process.pdf

**North Fork of the St. Lucie: Land Character
(Continued)**



IMPORTANT DISCLAIMER: All maps in this document are a conceptual or planning tool only. The South Florida Water Management District does not guarantee or make any representation regarding the information contained herein. It is not self-executing or binding, and does not affect the interests of any persons or properties, including any present or future right or use of real property.

For more information on the data layers used in the assessment, please refer to the Land Assessment Study Process and Methodology document available here: http://www.sfwmd.gov/portal/page/portal/xrepository/sfwmd_repository_pdf/land_assessment_study_process.pdf

C-23/C-24 Component, Photos



Former Citrus Groves awaiting project construction.

C-23/C-24 Component, Photos



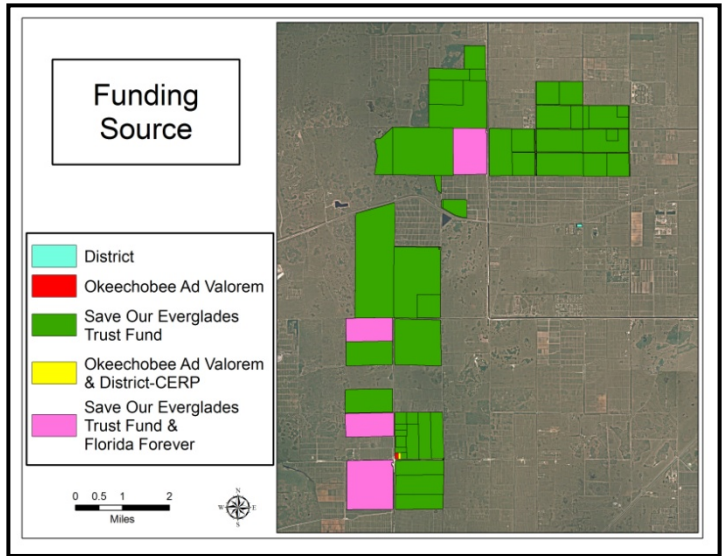
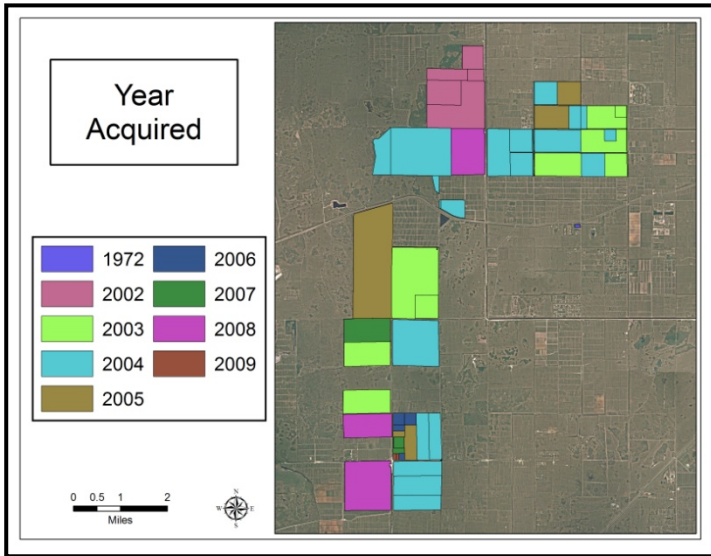
There are still portions of the project area that are under active citrus leases.

Cypress Creek (Trail Ridge) Complex, Photos

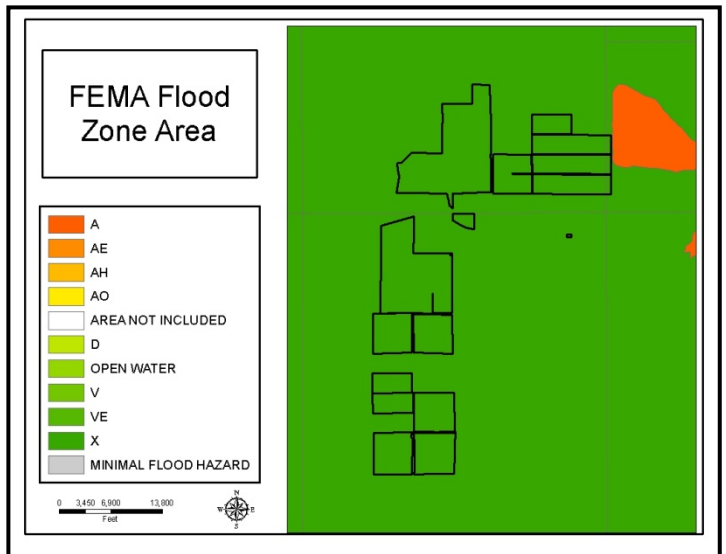
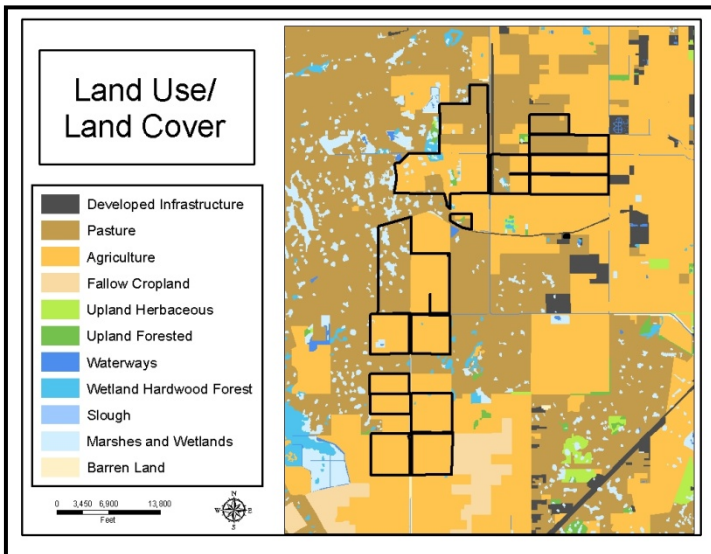


The 1233 acre Trail Ridge parcel contains some wetlands and oak hammock, but is primarily improved cattle pasture being grazed under cattle leases.

C-23/C-24 Component and Cypress Creek Complex: Land Acquisition



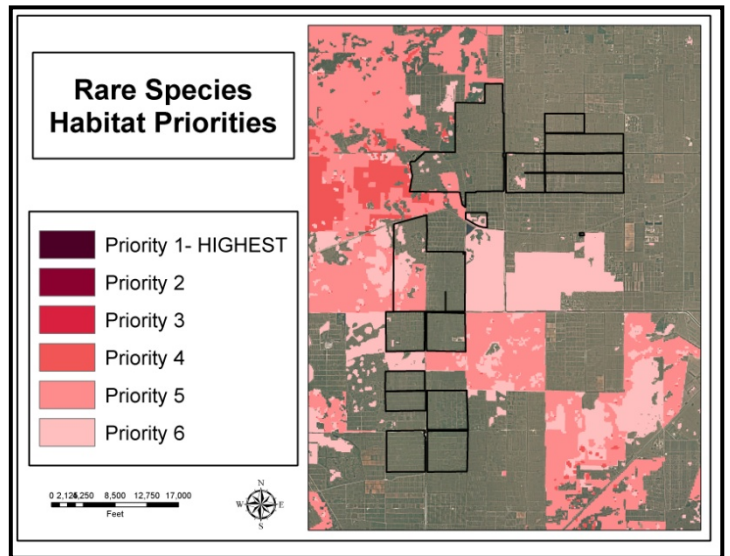
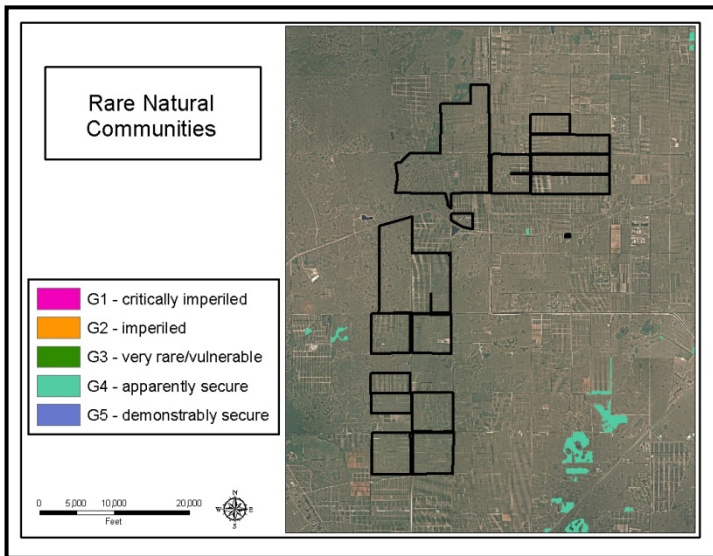
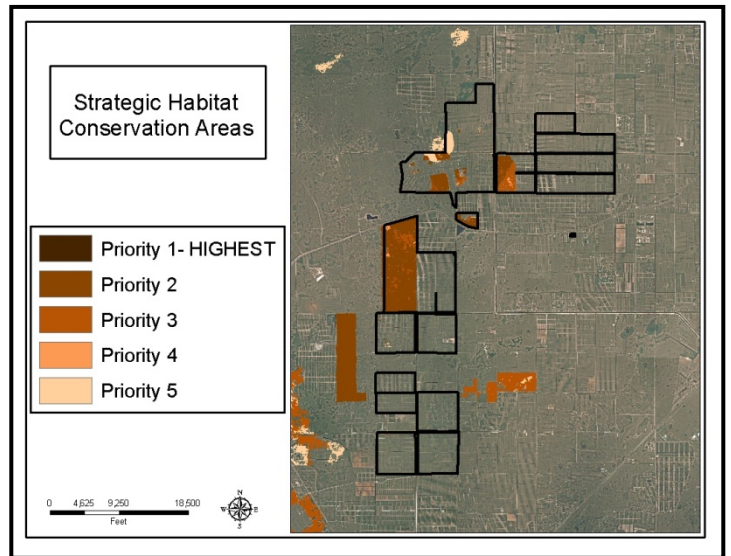
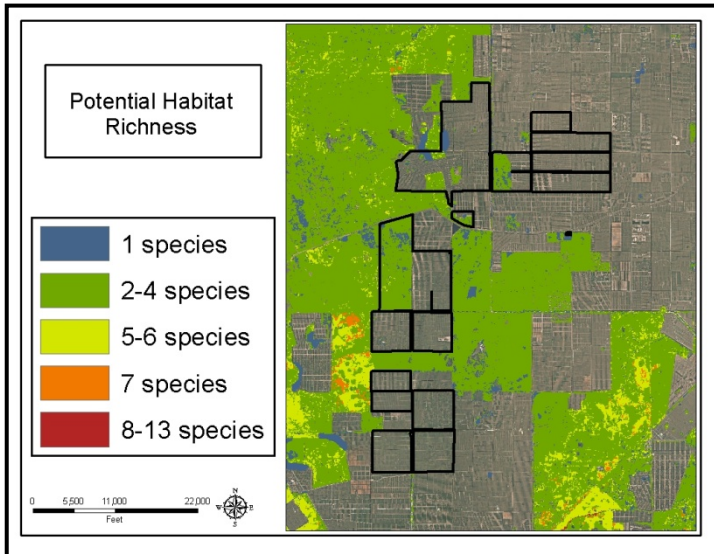
C-23/C-24 Component and Cypress Creek Complex: Land Character



IMPORTANT DISCLAIMER: All maps in this document are a conceptual or planning tool only. The South Florida Water Management District does not guarantee or make any representation regarding the information contained herein. It is not self-executing or binding, and does not affect the interests of any persons or properties, including any present or future right or use of real property.

For more information on the data layers used in the assessment, please refer to the Land Assessment Study Process and Methodology document available here: http://www.sfwmd.gov/portal/page/portal/xrepository/sfwmd_repository_pdf/land_assessment_study_process.pdf

C-23/C-24 Component and Cypress Creek Complex: Land Character (Continued)



IMPORTANT DISCLAIMER: All maps in this document are a conceptual or planning tool only. The South Florida Water Management District does not guarantee or make any representation regarding the information contained herein. It is not self-executing or binding, and does not affect the interests of any persons or properties, including any present or future right or use of real property.

For more information on the data layers used in the assessment, please refer to the Land Assessment Study Process and Methodology document available here:

http://www.sfwmd.gov/portal/page/portal/xrepository/sfwmd_repository_pdf/land_assessment_study_process.pdf

Individual Parcel Assessments

Sneed Road Parcel

Former Citrus Grove that has been determined to be outside of the planned Stormwater Treatment Area Project Footprint.. ~310.63 acres.

Ft. Pierce Field Station Parcel

Site of the Former Ft. Pierce Field Station. ~4.74 acres.

Highway 70 Parcels

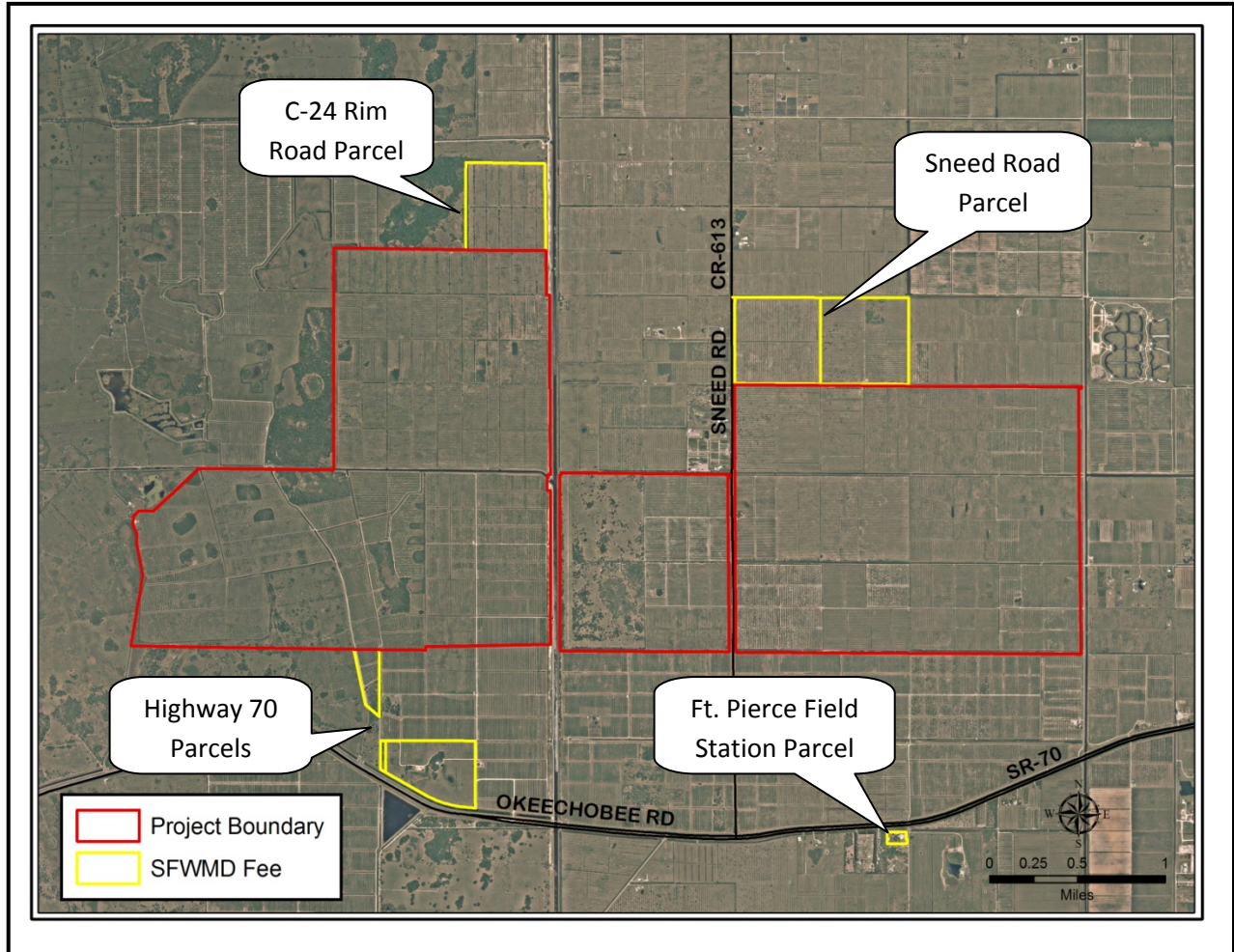
This property contains three tracts connected by an access road. The northern ~23.74 acre tract contains active citrus, and the southern ~103.52 acre tracts are cattle pasture.

C-24 Rim Road Parcel

Former Citrus Grove that has been determined to be outside of the planned Northern Reservoir Project Footprint.. ~146.25 acres

C-23 / C-24 Component Individual Parcels

Location Map



Snead Road Parcel, Photo



Ft. Pierce Field Station, Photo



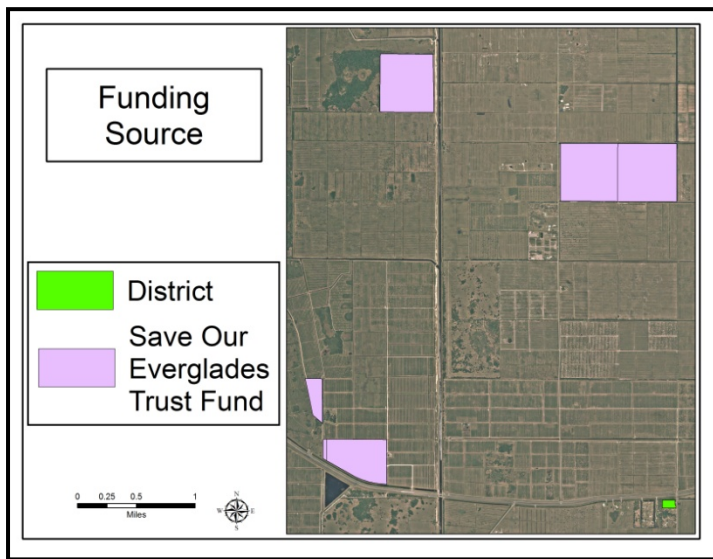
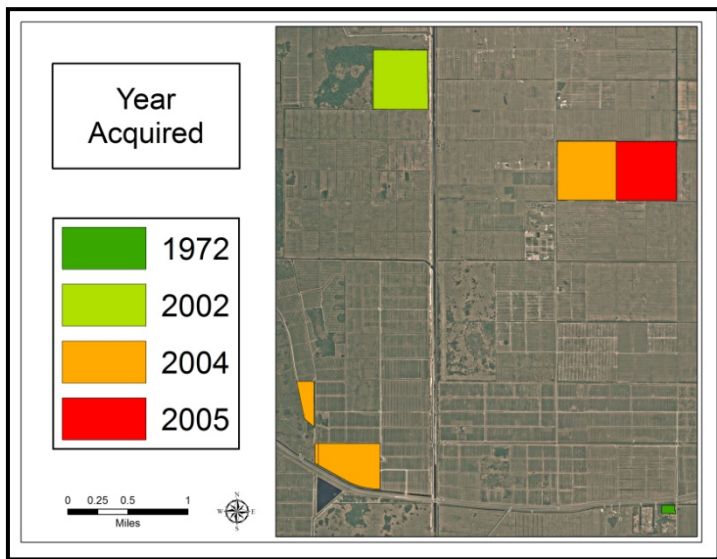
Highway 70 Parcel, Photo



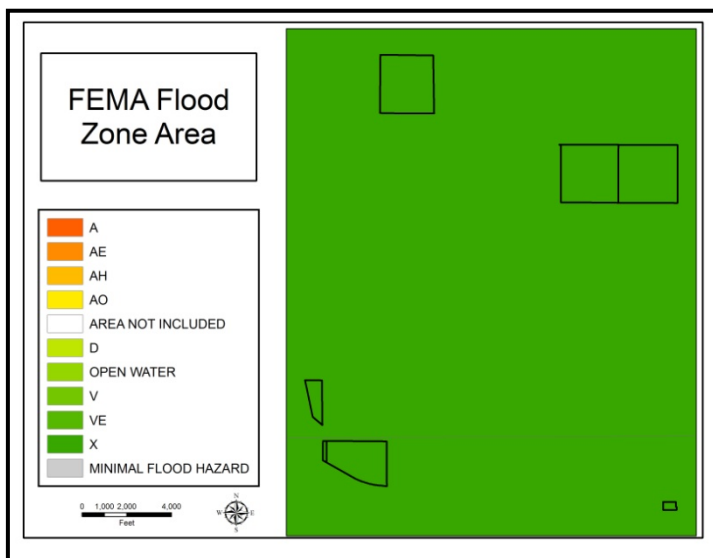
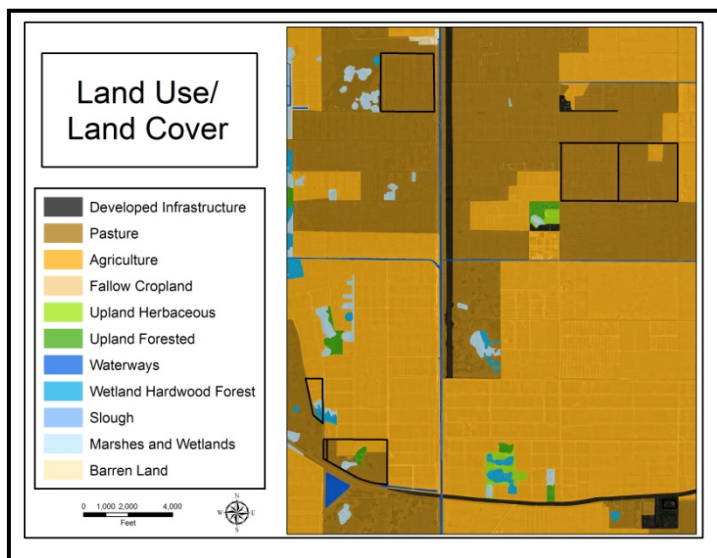
C-24 Rim Road Parcel, Photo



**C-23 / C-24 Component Individual Parcels:
Land Acquisition**



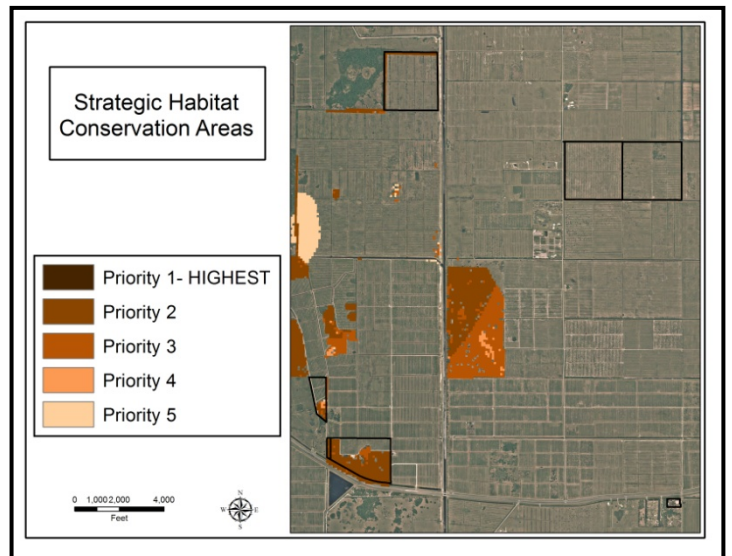
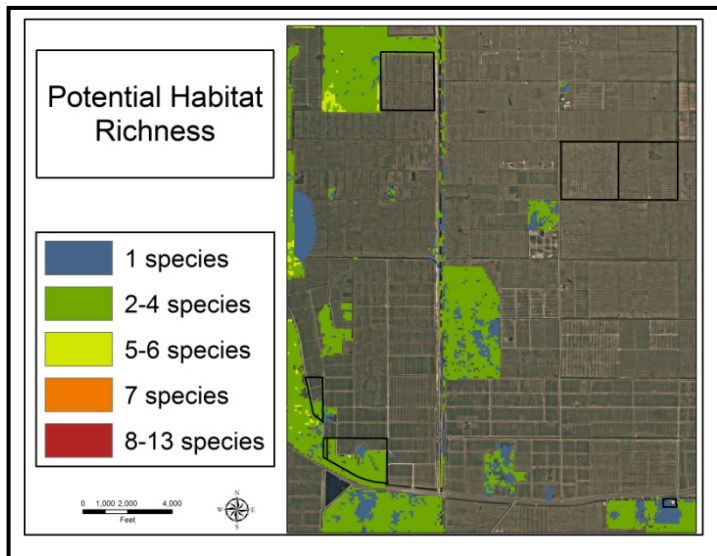
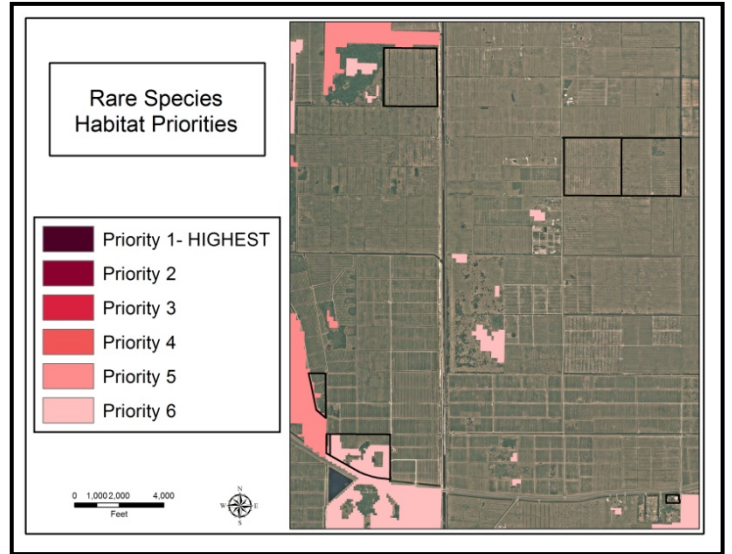
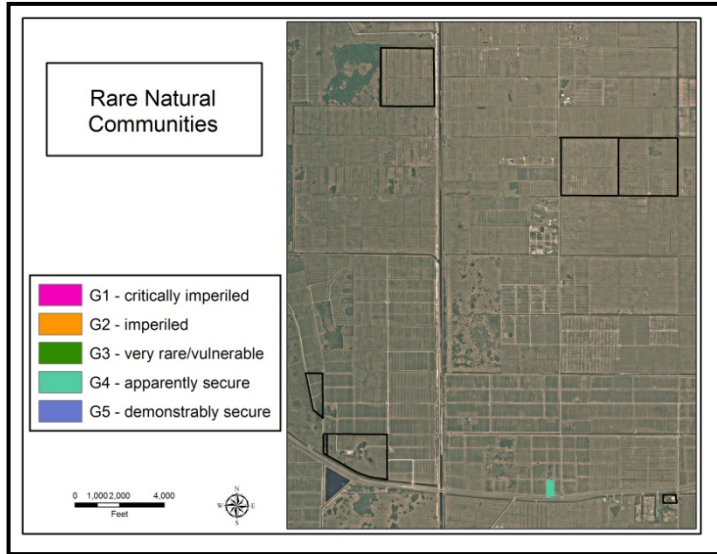
**C-23 / C-24 Component Individual Parcels:
Land Character**



IMPORTANT DISCLAIMER: All maps in this document are a conceptual or planning tool only. The South Florida Water Mngement District does not guarantee or make any representation regarding the information contained herein. It is not self-executing or binding, and does not affect the interests of any persons or properties, including any present or future right or use of real property.

For more information on the data layers used in the assessment, please refer to the Land Assessment Study Process and Methodology document available here: http://www.sfwmd.gov/portal/page/portal/xrepository/sfwmd_repository_pdf/land_assessment_study_process.pdf

**C-23 / C-24 Component Individual Parcels:
Land Character (continued)**



IMPORTANT DISCLAIMER: All maps in this document are a conceptual or planning tool only. The South Florida Water Management District does not guarantee or make any representation regarding the information contained herein. It is not self-executing or binding, and does not affect the interests of any persons or properties, including any present or future right or use of real property.

For more information on the data layers used in the assessment, please refer to the Land Assessment Study Process and Methodology document available here: http://www.sfwmd.gov/portal/page/portal/xrepository/sfwmd_repository_pdf/land_assessment_study_process.pdf

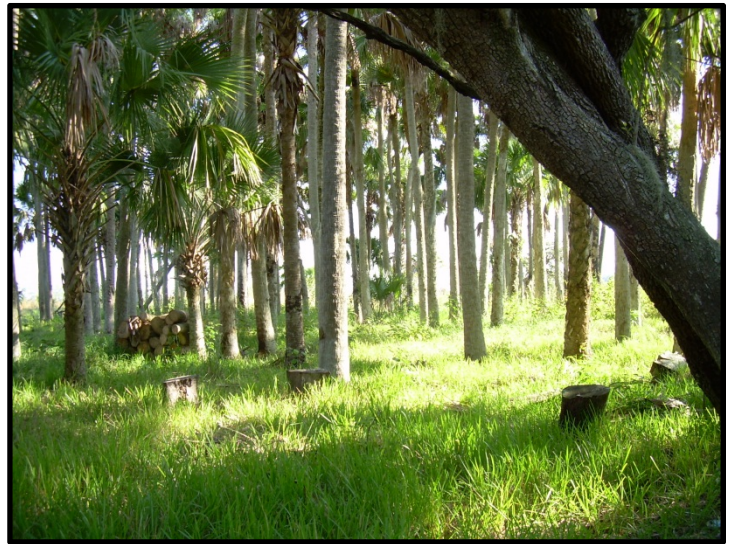
Allapattah Complex, Photos



Restoration at Allapattah is ongoing. Most of the areas not currently undergoing restoration are improved pasture with scattered palm and pine trees.

Bottom left: the Dove Field along Fox Brown Road.

Allapattah Complex, Photos



There are several trailheads with picnic facilities, and a camping area at Allapattah.

Bottom left: management through aerial application of prescribed fire

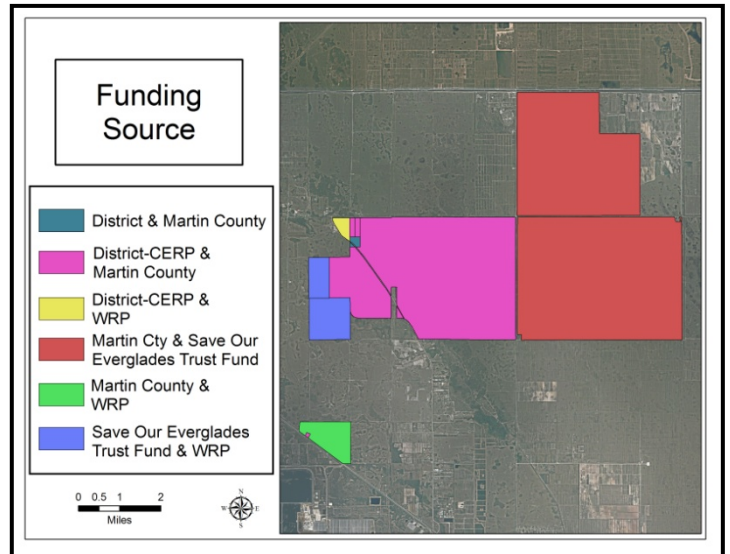
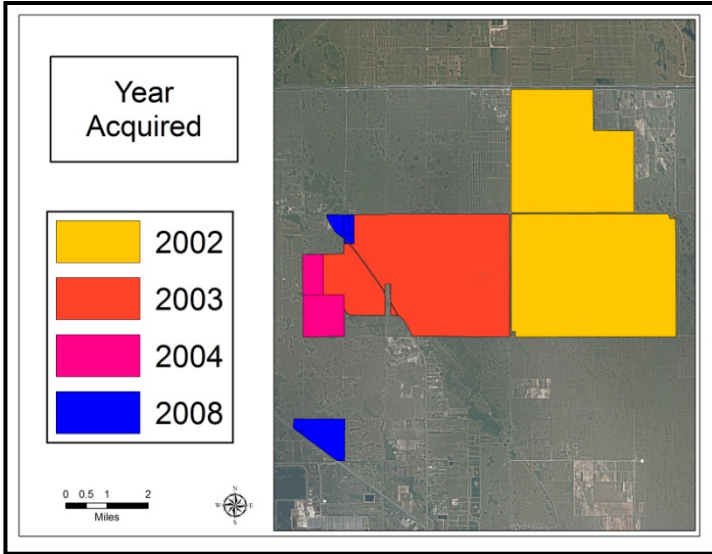
Allapattah Complex, Photos



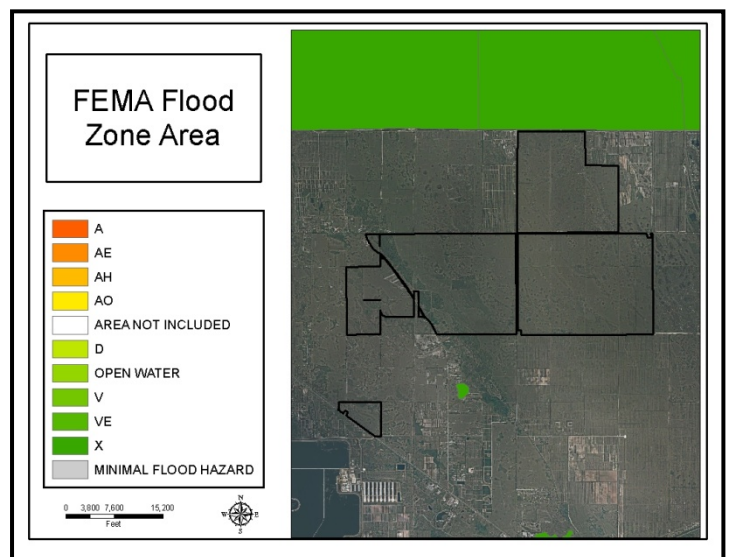
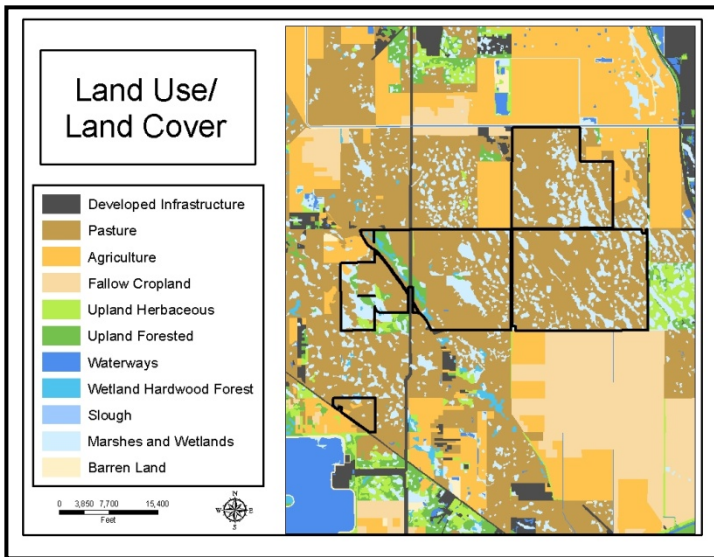
Clockwise from upper left: the access road leading to the camping area; sandhill cranes; wetlands in one of the restoration areas, a cow on one of the cattle leases, and white pelicans, egrets, and wood storks enjoying the wetlands of the restoration areas



Allapattah Complex: Land Character



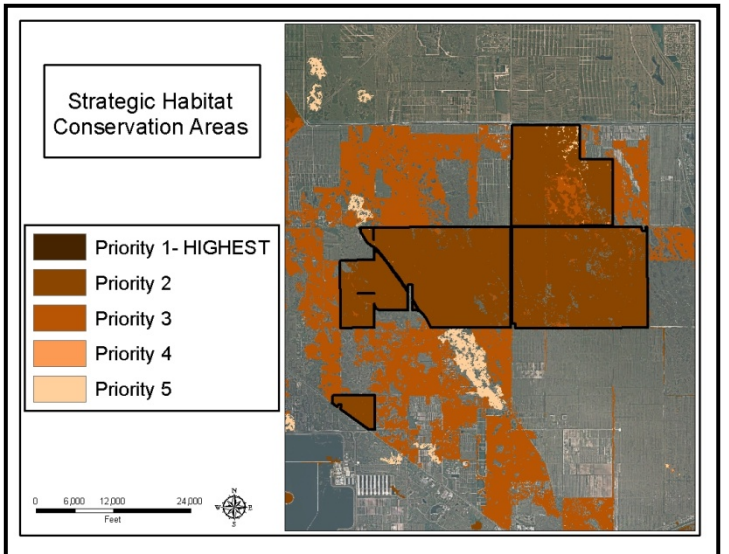
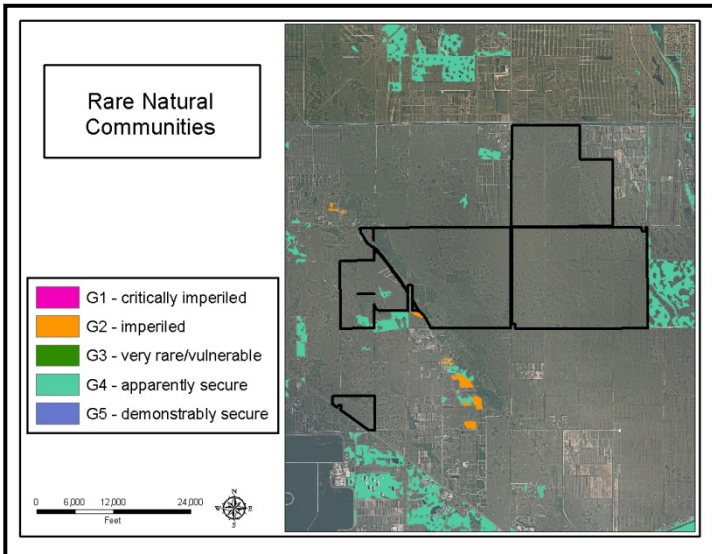
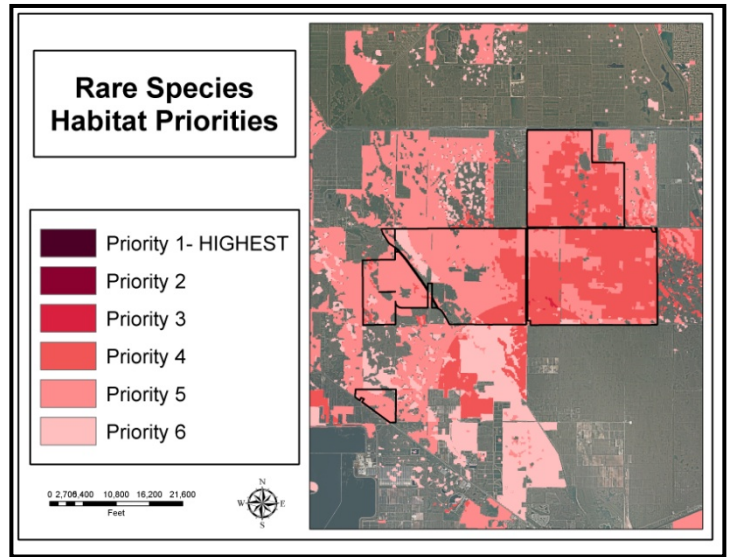
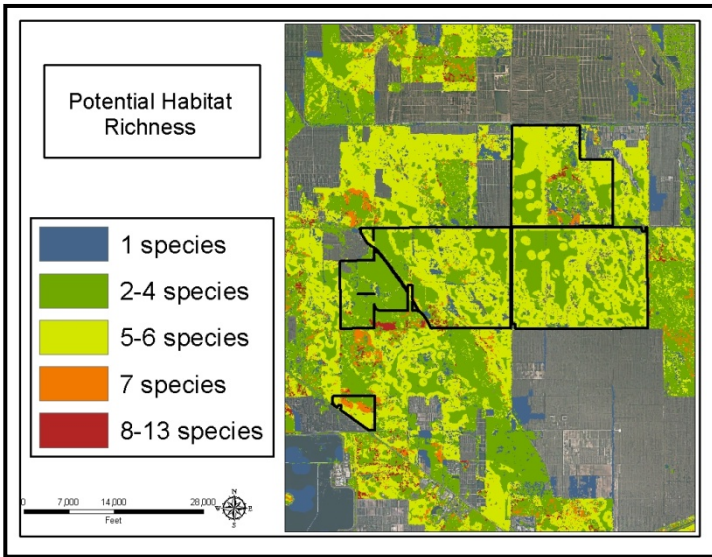
Allapattah Complex: Land Character



IMPORTANT DISCLAIMER: All maps in this document are a conceptual or planning tool only. The South Florida Water Management District does not guarantee or make any representation regarding the information contained herein. It is not self-executing or binding, and does not affect the interests of any persons or properties, including any present or future right or use of real property.

For more information on the data layers used in the assessment, please refer to the Land Assessment Study Process and Methodology document available here: http://www.sfwmd.gov/portal/page/portal/xrepository/sfwmd_repository_pdf/land_assessment_study_process.pdf

**Allapattah Complex: Land Character
(Continued)**

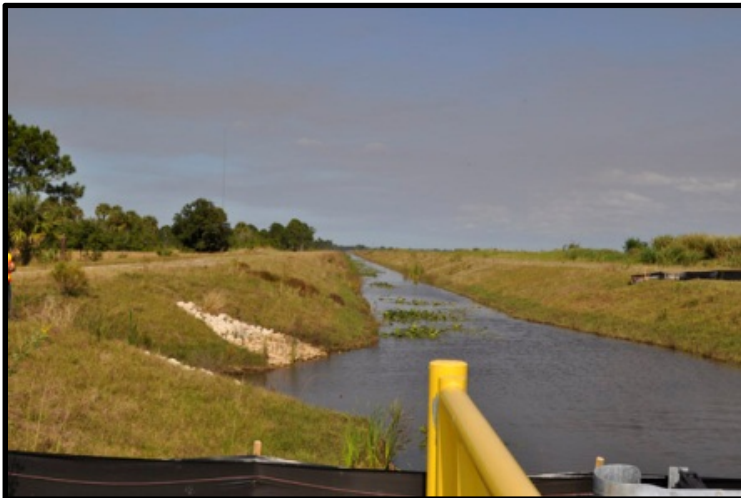


IMPORTANT DISCLAIMER: All maps in this document are a conceptual or planning tool only. The South Florida Water Management District does not guarantee or make any representation regarding the information contained herein. It is not self-executing or binding, and does not affect the interests of any persons or properties, including any present or future right or use of real property.

For more information on the data layers used in the assessment, please refer to the Land Assessment Study Process and Methodology document available here:

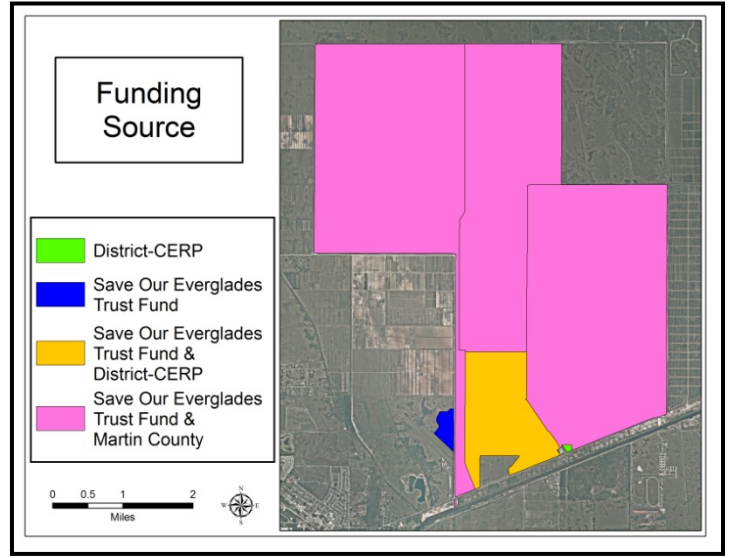
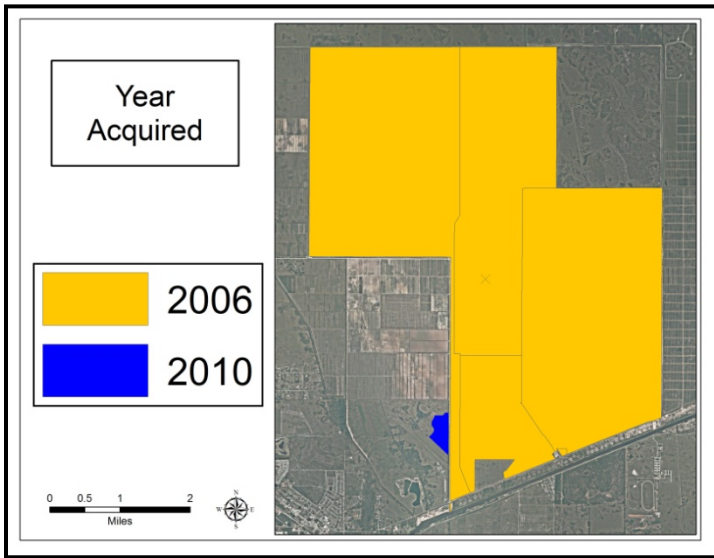
http://www.sfwmd.gov/portal/page/portal/xrepository/sfwmd_repository_pdf/land_assessment_study_process.pdf

C-44 Component, Photos

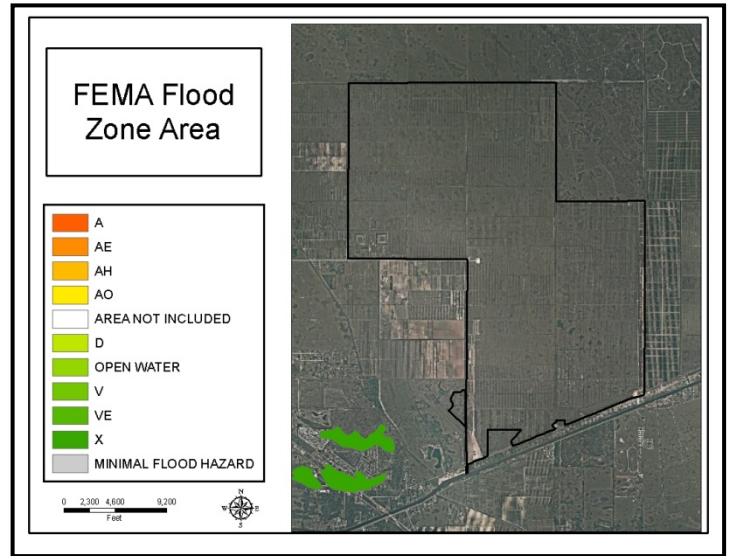
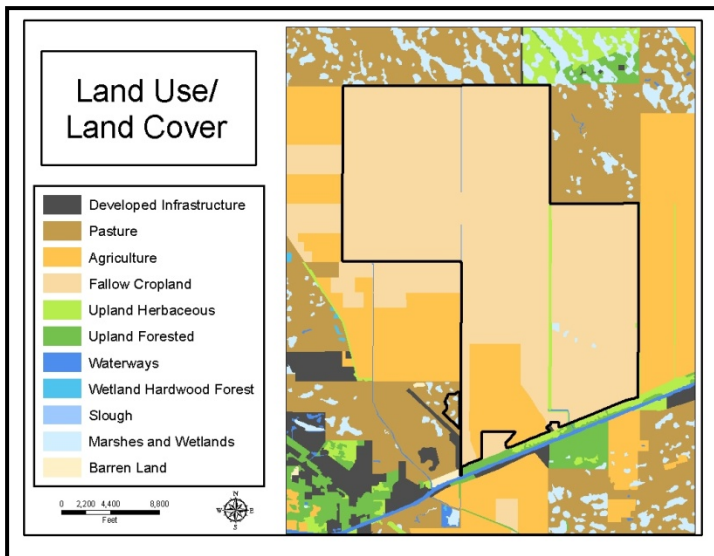


Construction underway at the C-44 component.

C-44 Component: Land Acquisition



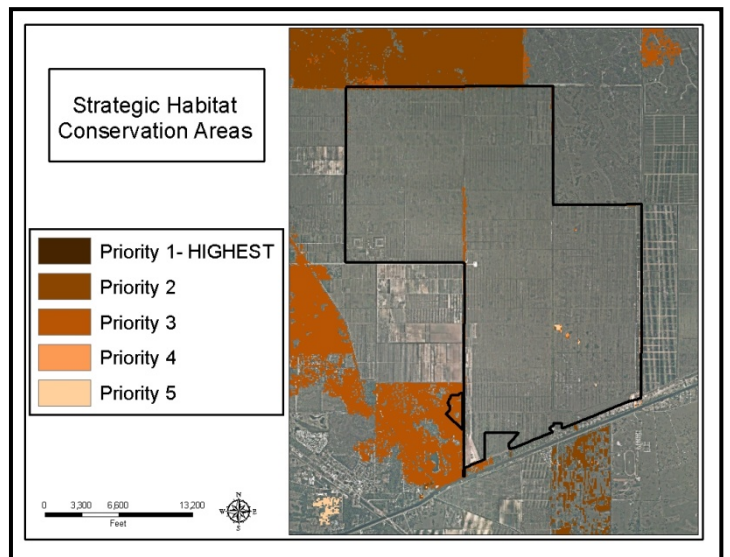
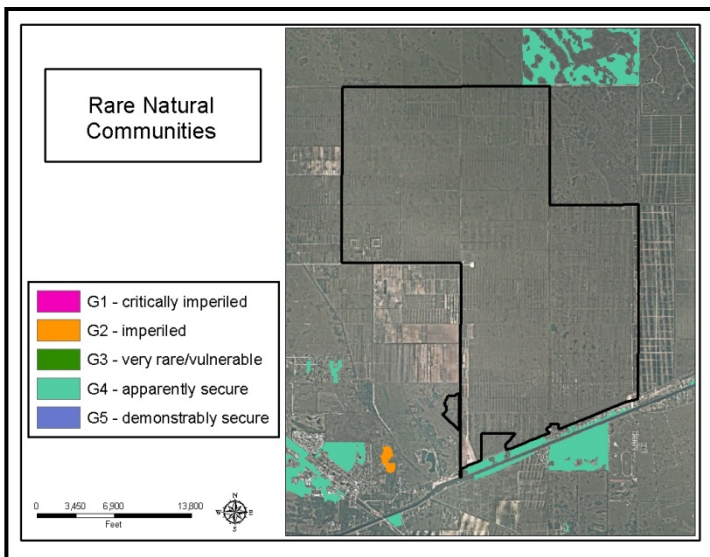
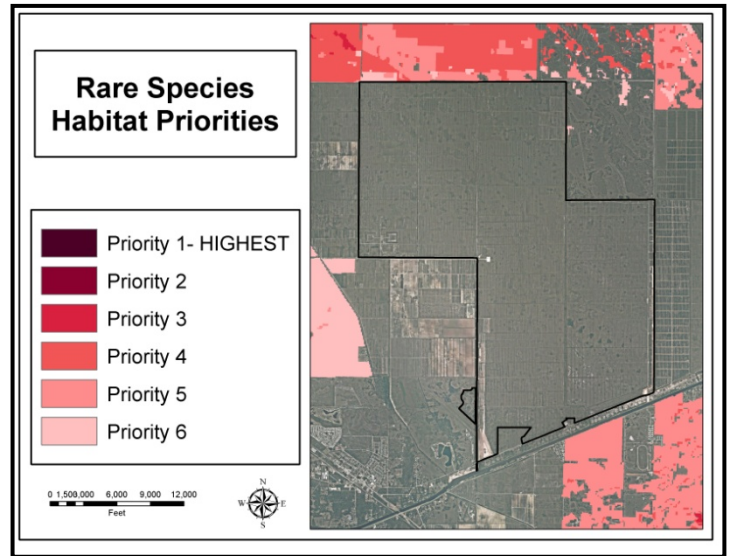
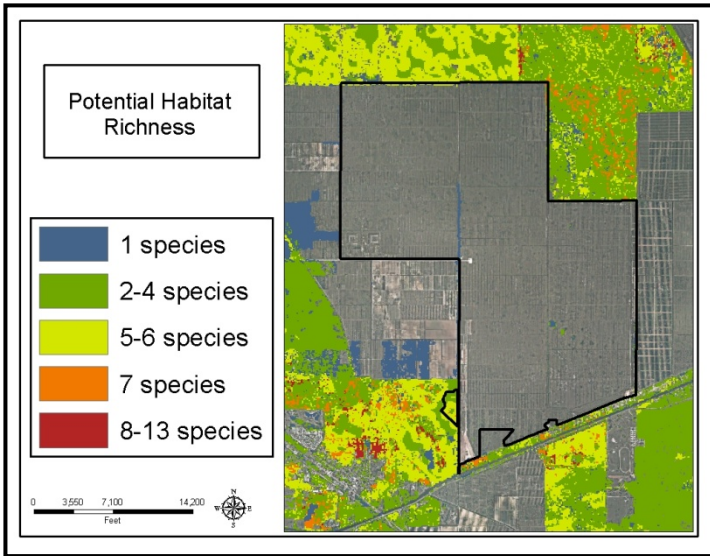
C-44 Component: Land Character



IMPORTANT DISCLAIMER: All maps in this document are a conceptual or planning tool only. The South Florida Water Mngement District does not guarantee or make any representation regarding the information contained herein. It is not self-executing or binding, and does not affect the interests of any persons or properties, including any present or future right or use of real property.

For more information on the data layers used in the assessment, please refer to the Land Assessment Study Process and Methodology document available here: http://www.sfwmd.gov/portal/page/portal/xrepository/sfwmd_repository_pdf/land_assessment_study_process.pdf

C-44 Component: Land Character (Continued)



IMPORTANT DISCLAIMER: All maps in this document are a conceptual or planning tool only. The South Florida Water Management District does not guarantee or make any representation regarding the information contained herein. It is not self-executing or binding, and does not affect the interests of any persons or properties, including any present or future right or use of real property.

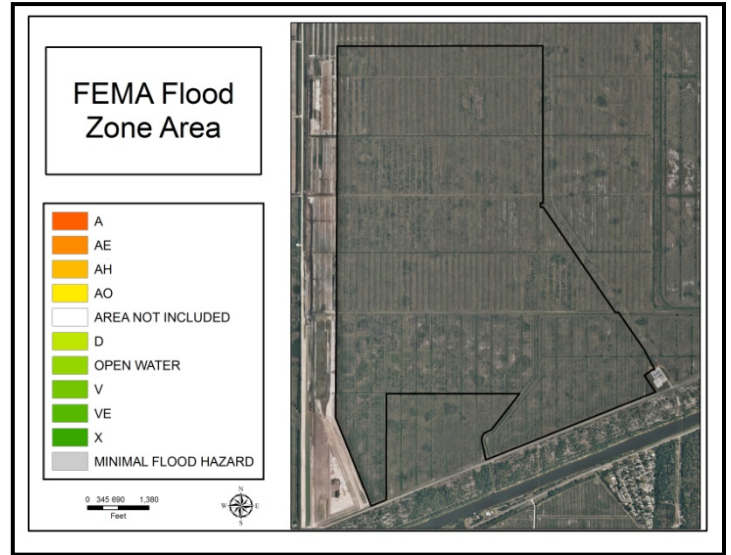
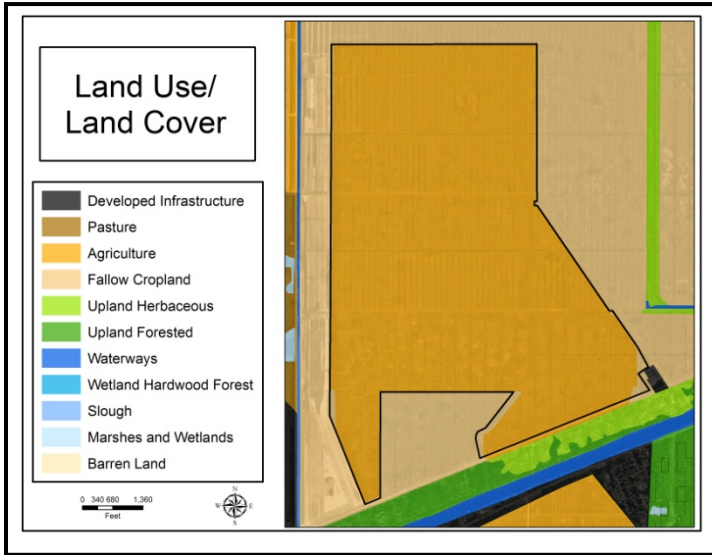
For more information on the data layers used in the assessment, please refer to the Land Assessment Study Process and Methodology document available here: http://www.sfwmd.gov/portal/page/portal/xrepository/sfwmd_repository_pdf/land_assessment_study_process.pdf

C-44 Component

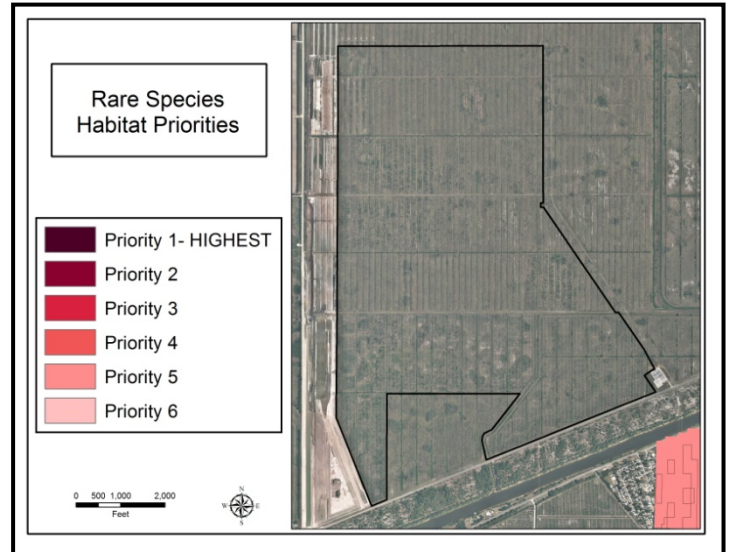
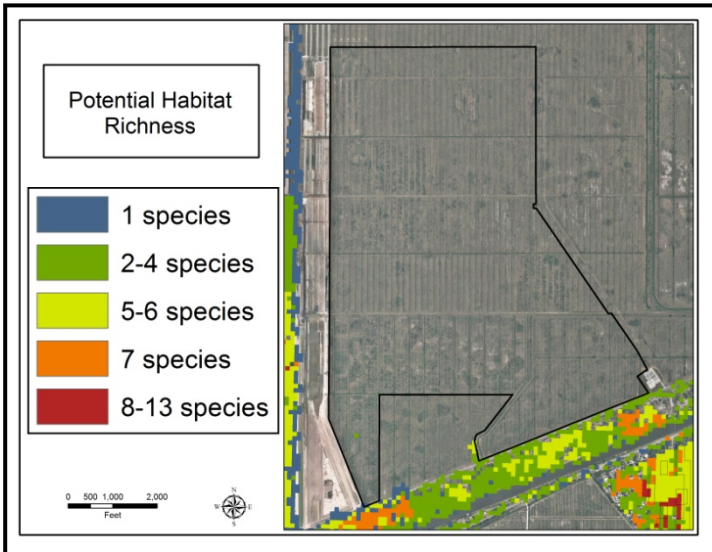
C-44 Component – 1,072-Acre Outparcel

Former Citrus Grove purchased in 2006 with Save Our Everglades Trust Fund and District – CERP funding on the south side of the project that has been determined to be outside of the planned Project Footprint.. ~12,011 acres.

C-44 Component – 1,072-Acre Outparcel:



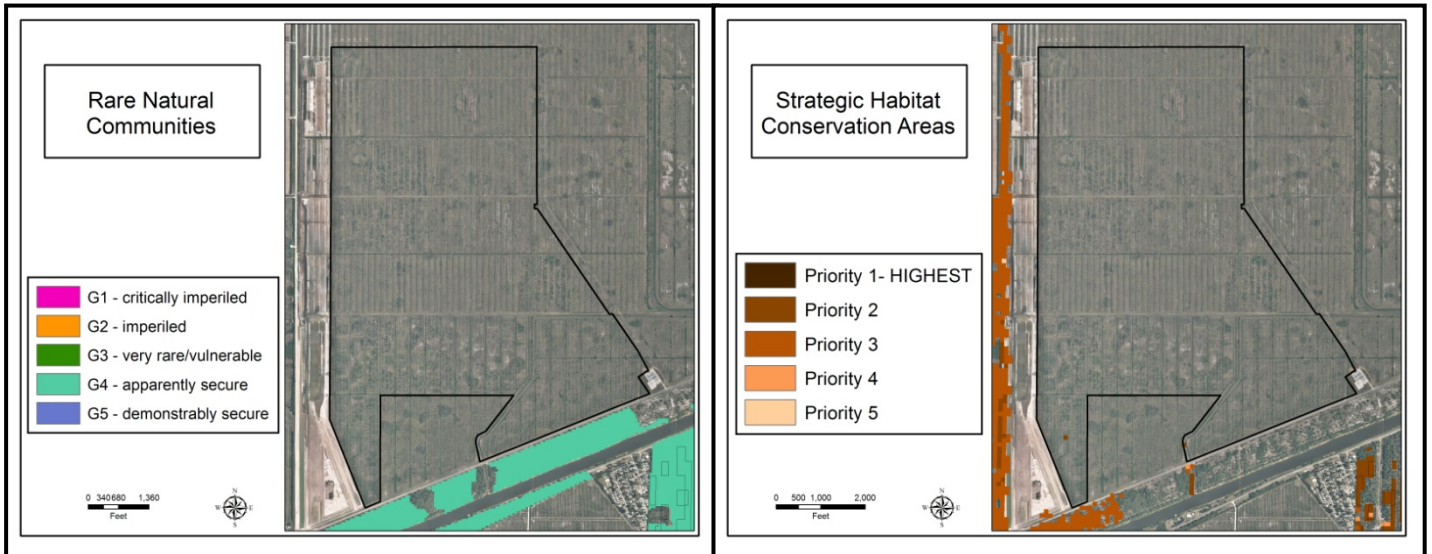
Land Character



IMPORTANT DISCLAIMER: All maps in this document are a conceptual or planning tool only. The South Florida Water Mngement District does not guarantee or make any representation regarding the information contained herein. It is not self-executing or binding, and does not affect the interests of any persons or properties, including any present or future right or use of real property.

For more information on the data layers used in the assessment, please refer to the Land Assessment Study Process and Methodology document available here: http://www.sfwmd.gov/portal/page/portal/xrepository/sfwmd_repository_pdf/land_assessment_study_process.pdf

**C-44 Component – 1,072-Acre Outparcel:
Land Character (Continued)**



IMPORTANT DISCLAIMER: All maps in this document are a conceptual or planning tool only. The South Florida Water Management District does not guarantee or make any representation regarding the information contained herein. It is not self-executing or binding, and does not affect the interests of any persons or properties, including any present or future right or use of real property.

For more information on the data layers used in the assessment, please refer to the Land Assessment Study Process and Methodology document available here: http://www.sfwmd.gov/portal/page/portal/xrepository/sfwmd_repository_pdf/land_assessment_study_process.pdf