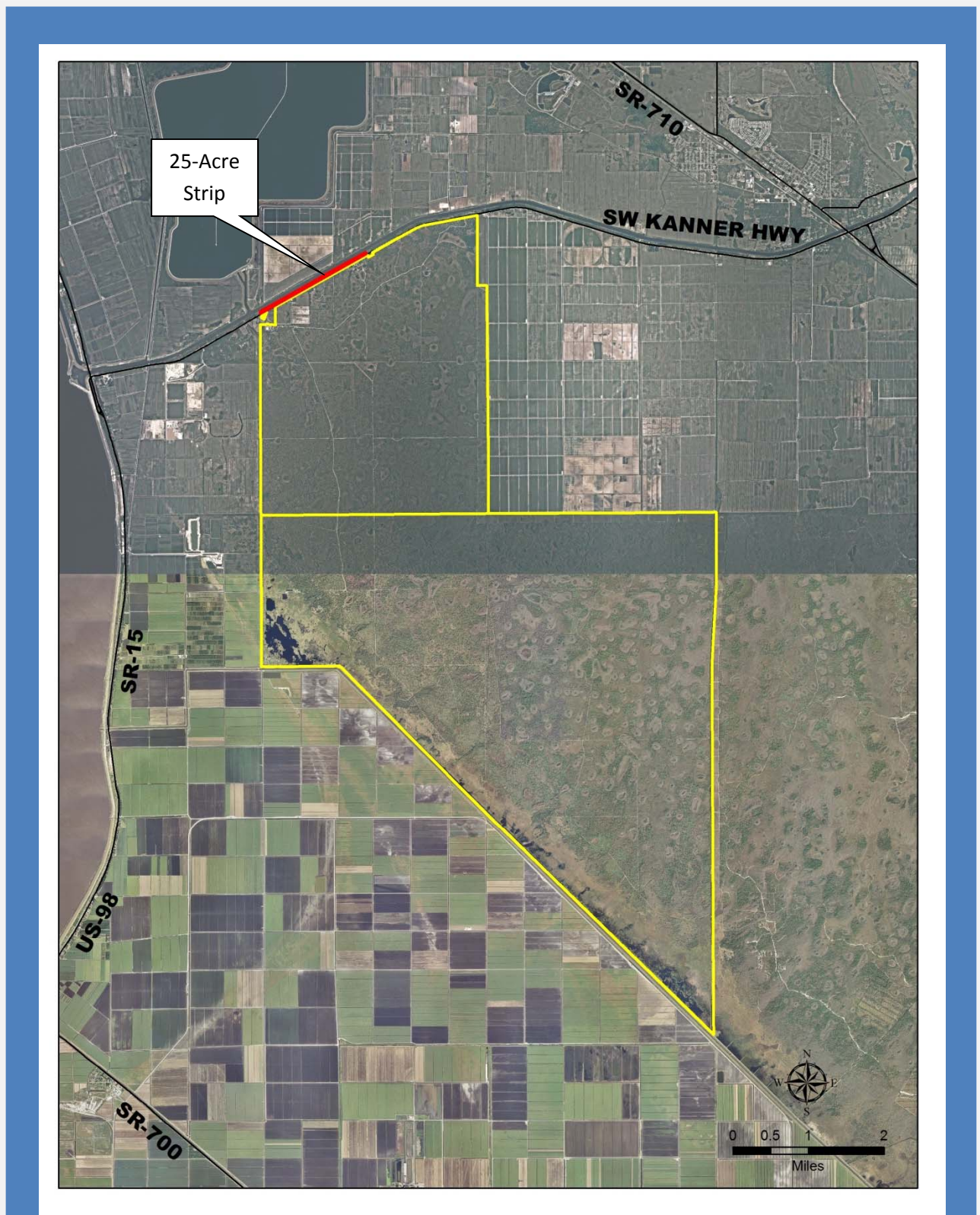


**DuPuis District Ownership Map**



The DuPuis Management Area, District-owned parcels are outlined in yellow. Property was purchased in 1986 with funding from the Land Acquisition Tust Fund.

**DuPuis**

Palm Beach and Martin Counties

- Area within planning boundary footprint ~ 21,877 acres
- District fee-simple ownership ~ 21,858 acres
- Other public fee-simple ownership ~ 0 acres
- Area under other protective restriction (conservation easement, platted preserve area, etc.) ~ 19 acres

**Site Overview**

The District purchased the DuPuis Management Area in 1986 through the Save Our Rivers program. The Management Area comprises 21,858 acres in northwest Palm Beach and southwest Martin counties. Prior to acquisition, the property was managed as the White Belt Ranch for the production of beef cattle, sheep, and goats. Ranch improvements included the construction of an extensive interior network of drainage ditches and the planting of exotic pasture grasses. As part of the initial environmental assessment, the District completed a wetland and hydroperiod restoration plan. Subsequently, a hydrologic restoration program was initiated to seasonally re-flood historic wetland areas. The District developed a burn program to reintroduce regular fire to the property including those portions where fire had been suppressed. The District also initiated exotic plant control, forest management, upland restoration, and development of an environmental education center.

Lead management responsibility for the Management Area has changed over time. From acquisition until 1990, the District managed the Management Area jointly with the Florida Fish and Wildlife Conservation Commission. During this time, initial resource management, restoration activities, and public use programs were started. In 1990, the Florida Division of Forestry began a 5-year contract as lead manager of the area with the Commission and the District as cooperative managers. During this time the area was operated as the DuPuis State Forest. The legislative appropriations for the continued operation of the State Forest ceased in 1994. The District and the Fish and Wildlife Conservation Commission have been cooperatively managing the site since 1995. Twenty-five years of intensive resource management and restoration activities allowed the site to be approved for the re-introduction of endangered Red-Cockaded Woodpeckers.

**Assessment Units**

None, but see the individual parcel assessment for the 25 acre strip of land that lies between the C-44 Canal and Kanner Highway.

**Core Mission Values**

The southwestern boundary contains the L8 Marsh, this area was the historic northeastern edge of the everglades, and is bounded by a sand ridge with a long narrow oak hammock. The southeastern half of the site is dominated by cypress swamps; the area is part of a historic flow way that extended north along the east side of the Osceola Plain to St. Lucie County where the waters of the everglades would seasonally connect to waters of the St. Johns River system. The area supports natural systems restoration and protection, provides natural storage of water, helps mitigate flood damage through its storage capacity, and supplies clean water to the L8 canal.

**Other Resource Value**

Twenty-five years of land management and restoration activities has made the site a very diverse natural system. The area has an excellent prescribed burn history. The endangered red-cockaded woodpecker has been re-introduced onto the site, adding a significant area to its historic range.

**Management Issues**

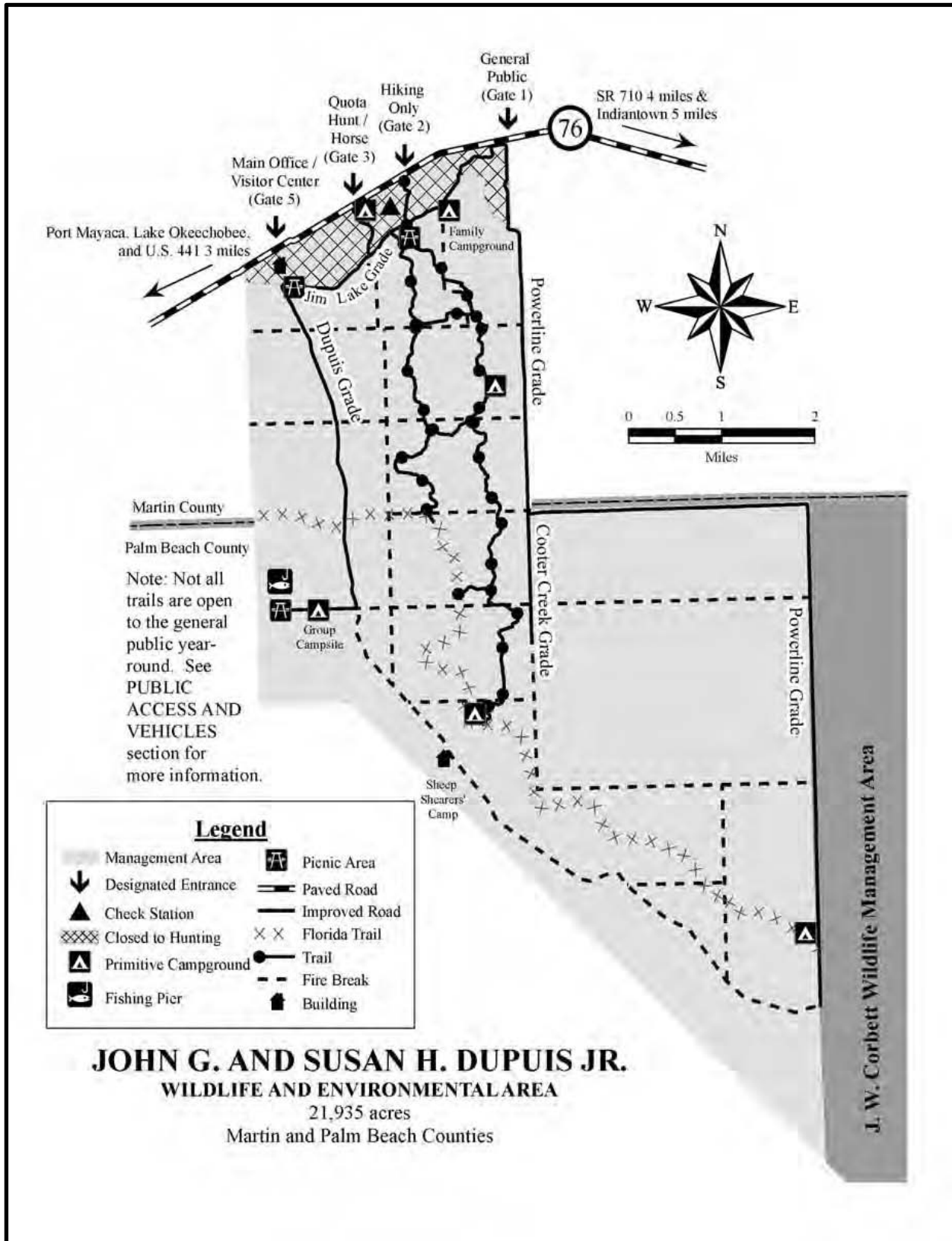
The area is managed cooperatively with FWC, and educational/outreach services are provided by the Florida Center for Environmental Studies.

**Public Use and Recreation Value**

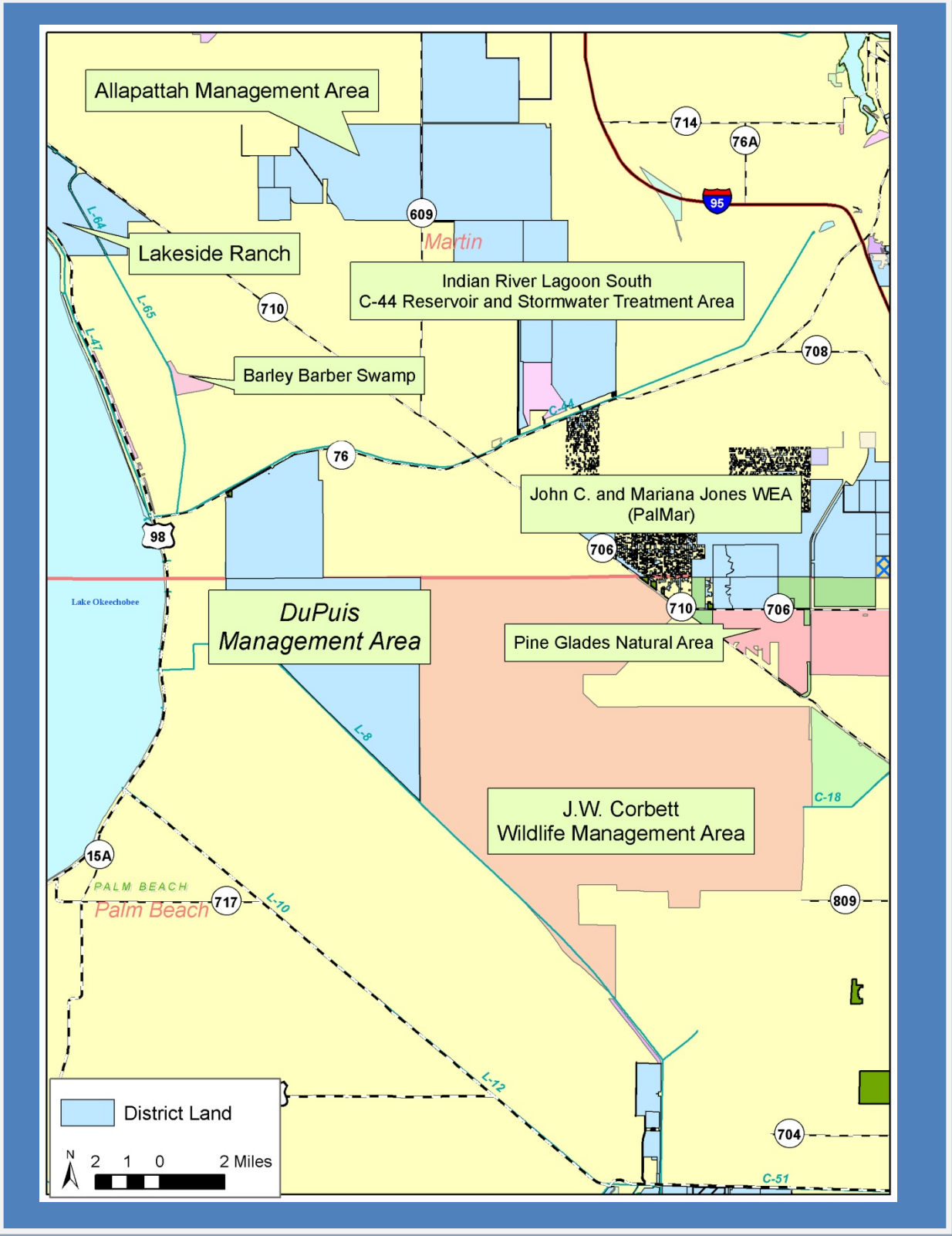
The northern portion of the site has many public use facilities. A large equestrian campground with several barn-stables and paddocks, a family campground for tent camping, a large group campground, a boardwalk, a mountain biking trail, a fishing pier, picnic shelters, an education center and butterfly garden, and many miles of equestrian and hiking trails. The Ocean to Lake trail runs through the site; this is a regional trail that extends from Lake Okeechobee to the Atlantic Ocean offering hikers a multi-day hiking opportunity crossing many different public lands in southern Martin and northern Palm Beach Counties.



**DuPuis FWC Hunting and Public Use Map**



**DuPuis Area Public Land**



**DuPuis Management Area with 1938 (west half) and 1949 (east half) aerials**





**DuPuis Regional Topographic Setting**





DuPuis, Photos



DuPuis contains a rich mosaic of natural communities. At one and a half times larger than Manhattan Island in New York, it is a regionally significant natural area



DuPuis, Photos



**Wet Flatwood/Wet Prairie communities are abundant in the southern portions of the site (Top).**

**The L-8 Marsh, the historic edge of the Everglades (Left).**



DuPuis, Photos

The restoration of vibrant and healthy natural communities at DuPuis has been achieved through the application of a wide range of management tools, such as timber thinning to prevent pine bark beetle infestations, palm harvesting to prevent monoculture development, mechanically shredding overgrown palmettos, and the regular application of prescribed fire





DuPuis, Photos



DuPuis has an active earth science education program, enhanced through a partnership with the Florida Center for Environmental Studies.



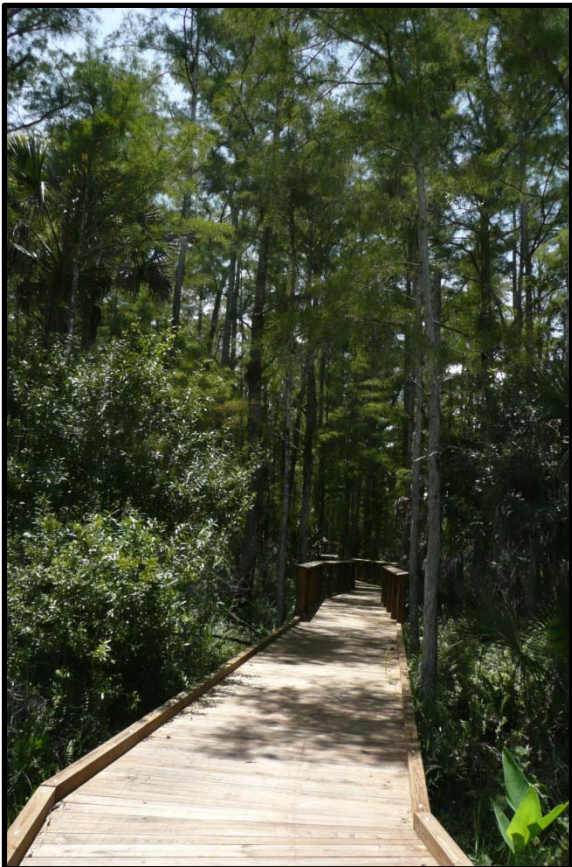
DuPuis, Photos



DuPuis is a popular area for equestrian trail rides. DuPuis has an equestrian campground with several large stables and paddocks.



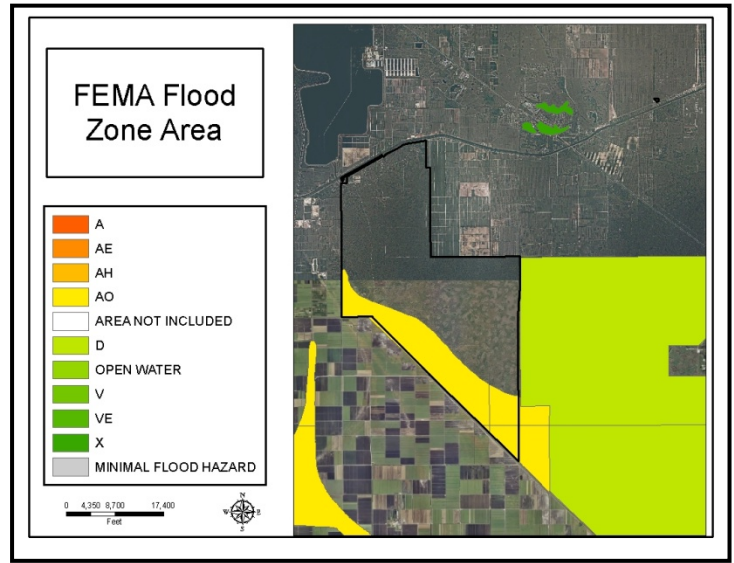
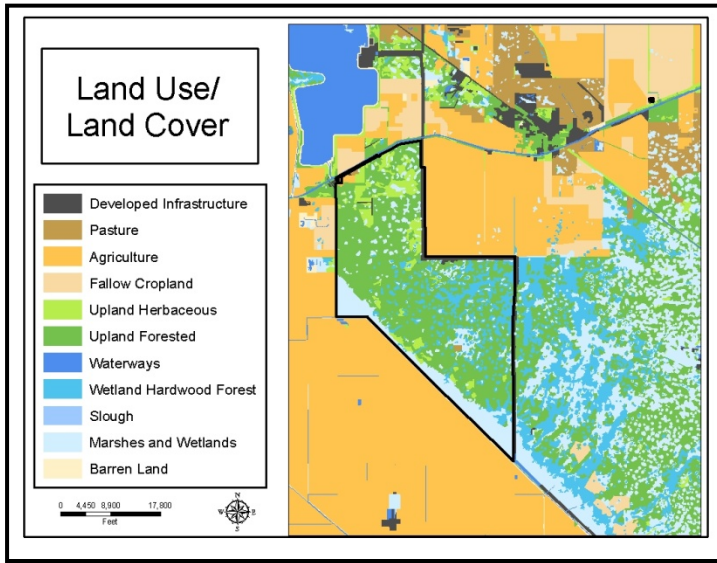
DuPuis, Public Use Photos



DuPuis is a popular hunting area. The property also contains a recreation area with chiki hut picnic shelters and a fishing pier, a family campground, and a boardwalk through a cypress swamp. Although not pictured, DuPuis is a great place for leisure bicycling, and also has a popular mountain biking trail.



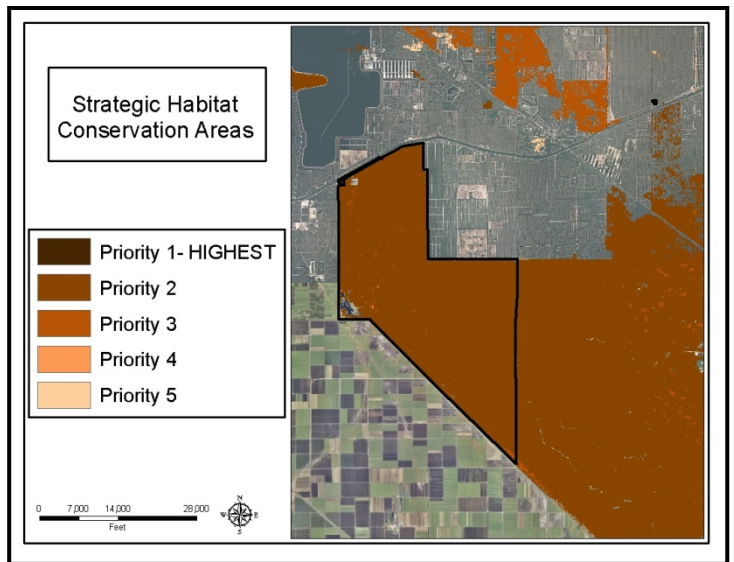
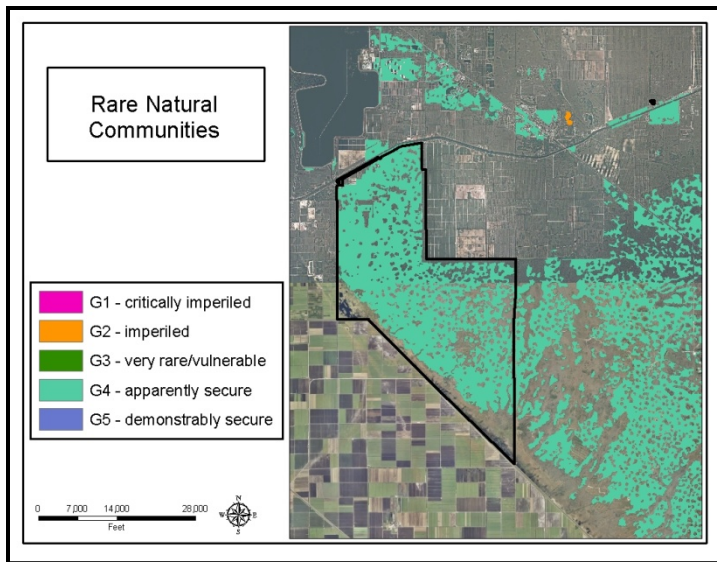
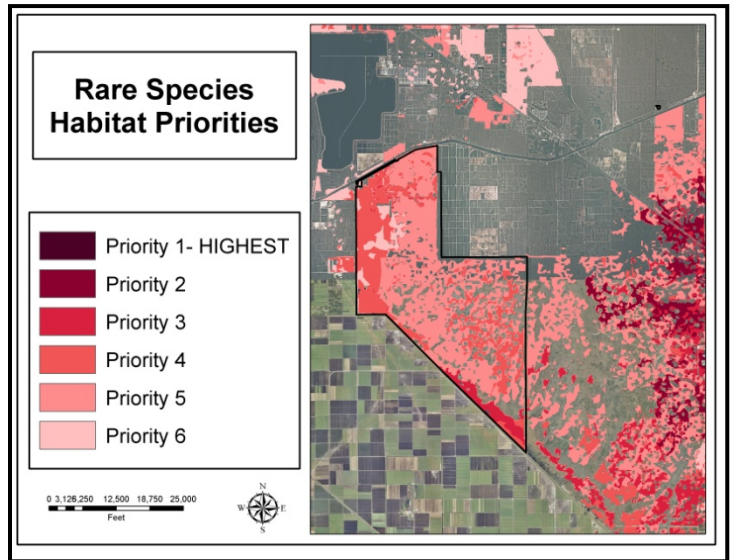
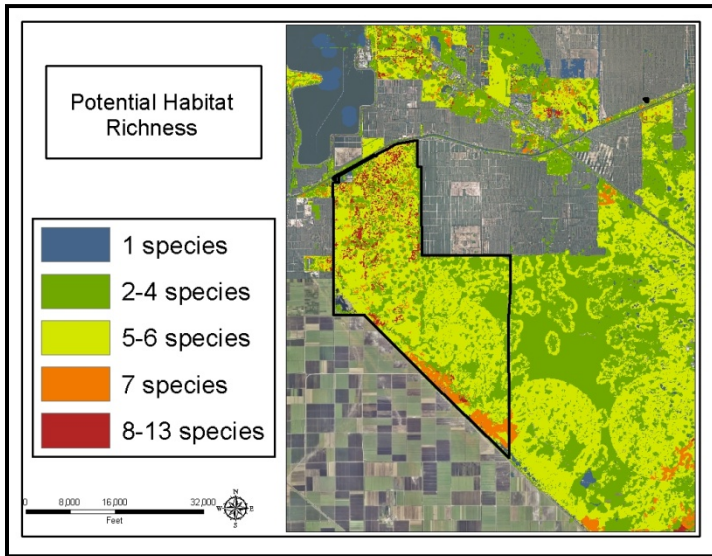
**DuPuis: Land Character**



**IMPORTANT DISCLAIMER:** All maps in this document are a conceptual or planning tool only. The South Florida Water Management District does not guarantee or make any representation regarding the information contained herein. It is not self-executing or binding, and does not affect the interests of any persons or properties, including any present or future right or use of real property.

For more information on the data layers used in the assessment, please refer to the Land Assessment Study Process and Methodology document available here: [http://www.sfwmd.gov/portal/page/portal/xrepository/sfwmd\\_repository\\_pdf/land\\_assessment\\_study\\_process.pdf](http://www.sfwmd.gov/portal/page/portal/xrepository/sfwmd_repository_pdf/land_assessment_study_process.pdf)

DuPuis: Land Character (Continued)



**IMPORTANT DISCLAIMER:** All maps in this document are a conceptual or planning tool only. The South Florida Water Management District does not guarantee or make any representation regarding the information contained herein. It is not self-executing or binding, and does not affect the interests of any persons or properties, including any present or future right or use of real property.

For more information on the data layers used in the assessment, please refer to the Land Assessment Study Process and Methodology document available here: [http://www.sfwmd.gov/portal/page/portal/xrepository/sfwmd\\_repository\\_pdf/land\\_assessment\\_study\\_process.pdf](http://www.sfwmd.gov/portal/page/portal/xrepository/sfwmd_repository_pdf/land_assessment_study_process.pdf)



## DuPuis Individual Parcel Assessment

### 25-acre strip

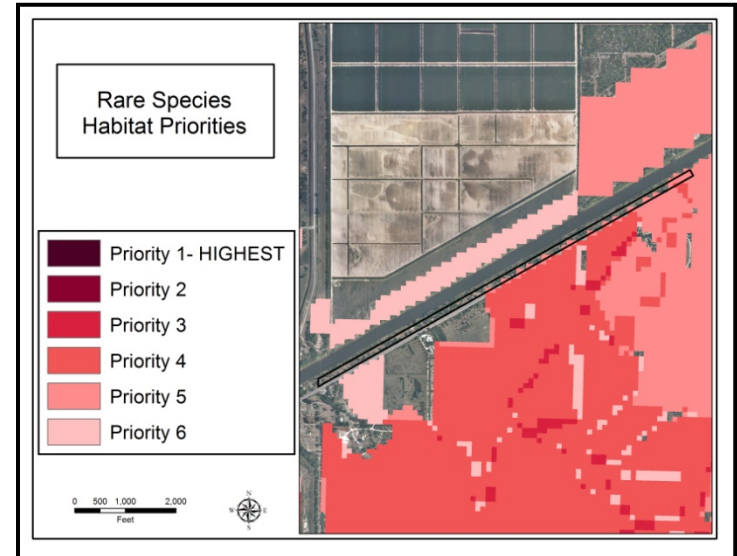
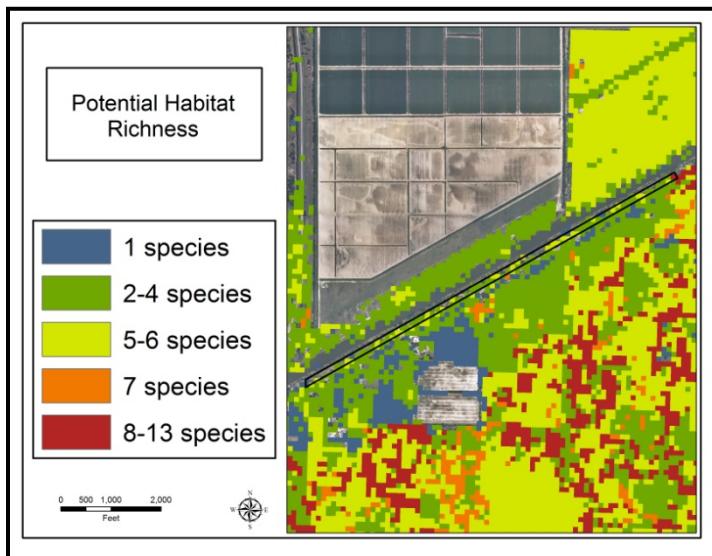
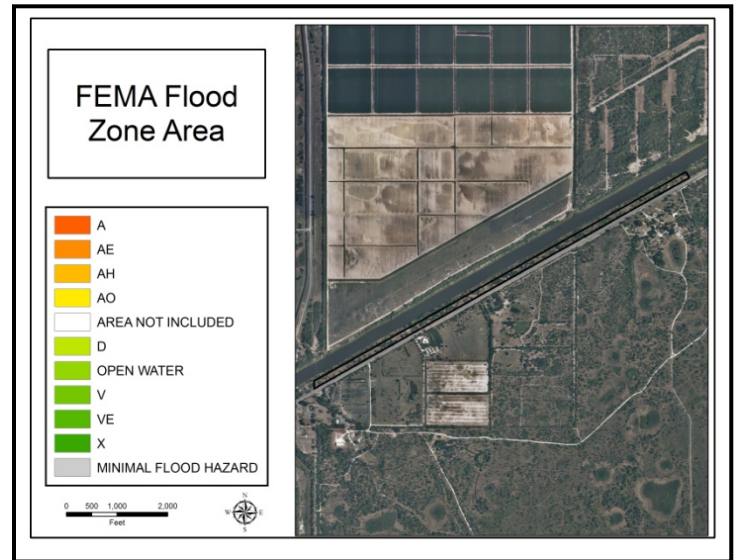
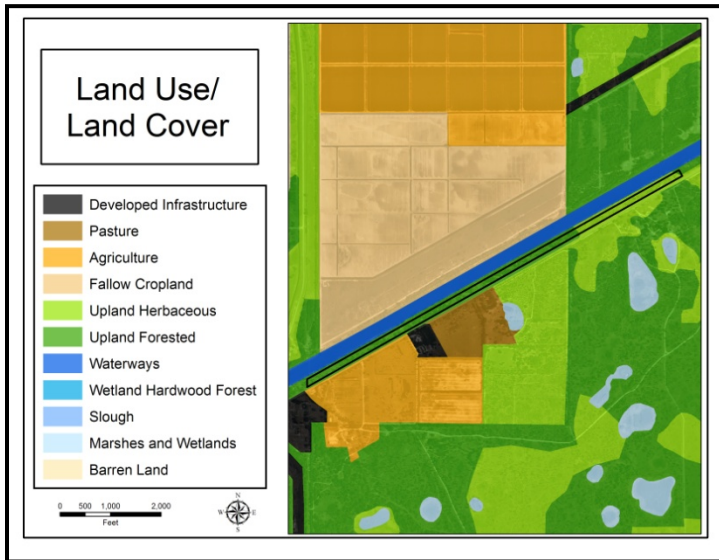
The acquisition of DuPuis included a 25-acre strip of land that lies south between Kanner Highway and the C-44 canal. While there are oak and palm trees present (see photos below), the area is extremely over drained because of its proximity to the canal. The average width of the strip is approximately 130 feet.

### 25-Acre Strip, Photos





**DuPuis Parcel Assessment – 25-Acre Strip  
Land Character:**

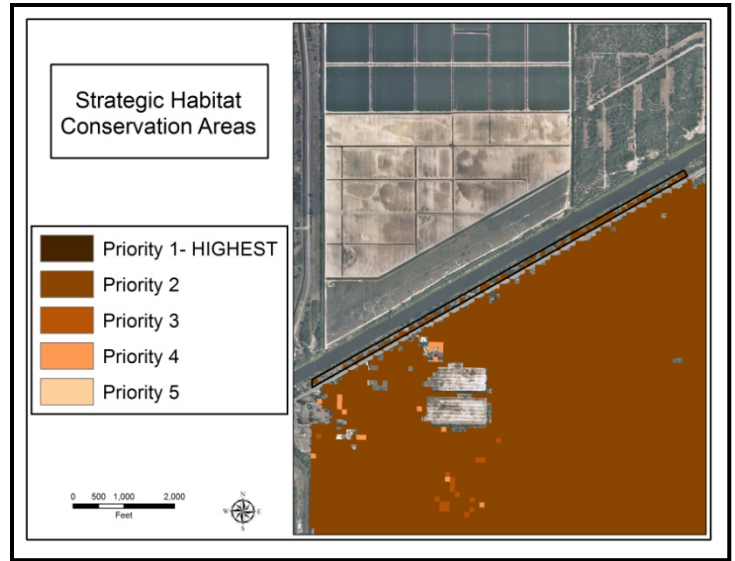
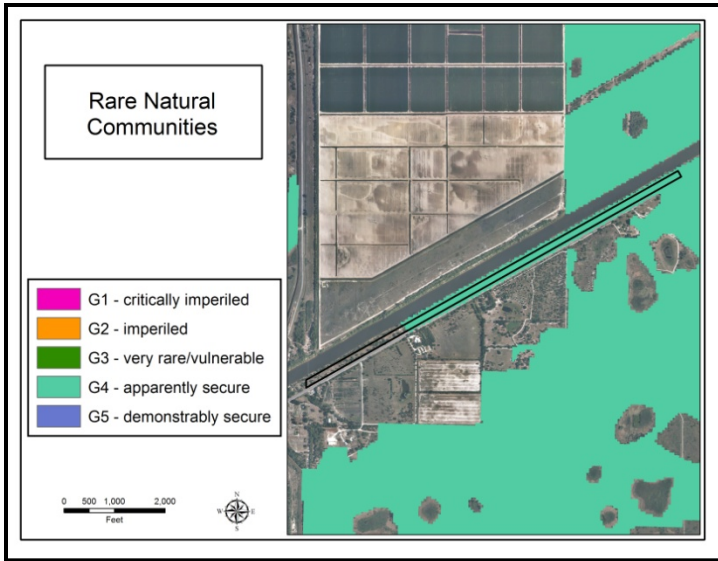


**IMPORTANT DISCLAIMER:** All maps in this document are a conceptual or planning tool only. The South Florida Water Management District does not guarantee or make any representation regarding the information contained herein. It is not self-executing or binding, and does not affect the interests of any persons or properties, including any present or future right or use of real property.

For more information on the data layers used in the assessment, please refer to the Land Assessment Study Process and Methodology document available here: [http://www.sfwmd.gov/portal/page/portal/xrepository/sfwmd\\_repository\\_pdf/land\\_assessment\\_study\\_process.pdf](http://www.sfwmd.gov/portal/page/portal/xrepository/sfwmd_repository_pdf/land_assessment_study_process.pdf)



**DuPuis Parcel Assessment – 25-Acre Strip:  
Land Character (Continued)**



**IMPORTANT DISCLAIMER:** All maps in this document are a conceptual or planning tool only. The South Florida Water Management District does not guarantee or make any representation regarding the information contained herein. It is not self-executing or binding, and does not affect the interests of any persons or properties, including any present or future right or use of real property.

For more information on the data layers used in the assessment, please refer to the Land Assessment Study Process and Methodology document available here:  
[http://www.sfwmd.gov/portal/page/portal/xrepository/sfwmd\\_repository\\_pdf/land\\_assessment\\_study\\_process.pdf](http://www.sfwmd.gov/portal/page/portal/xrepository/sfwmd_repository_pdf/land_assessment_study_process.pdf)